

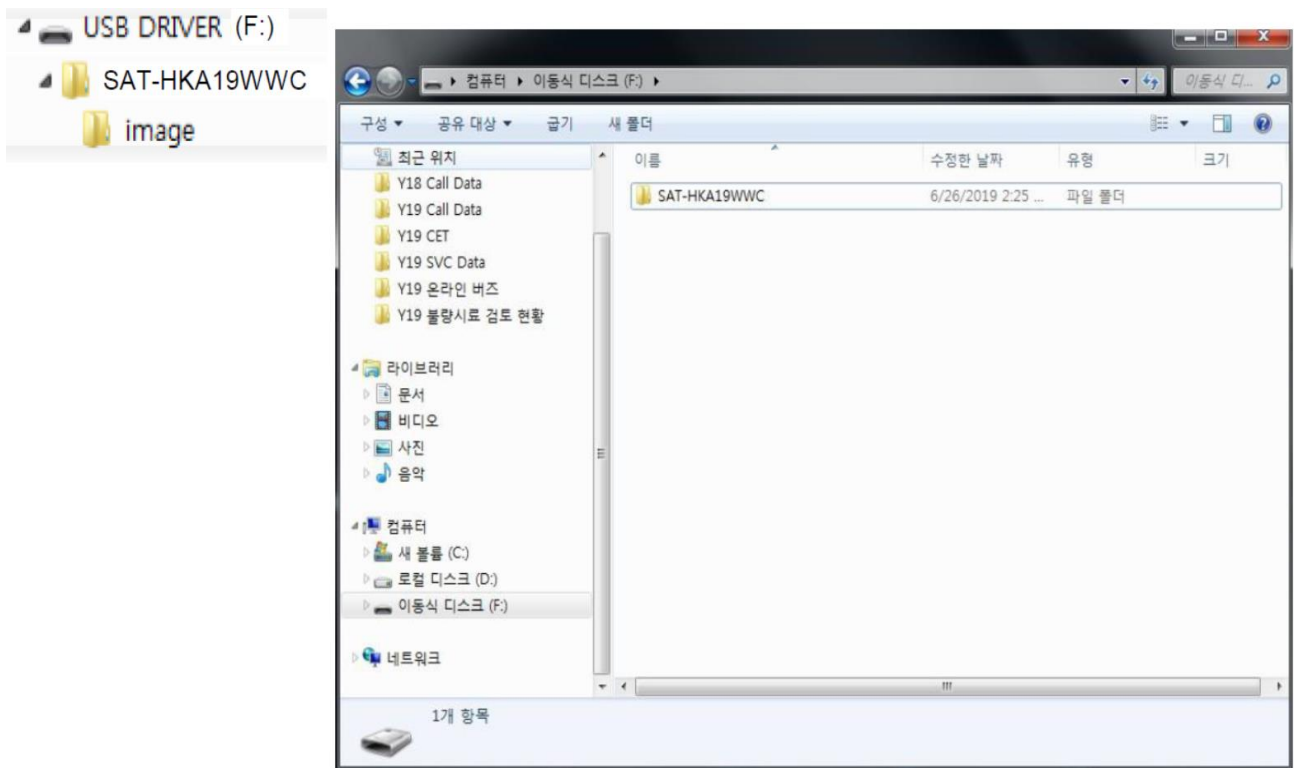
2019 Sound Bar F/W Upgrade Guide

SAMSUNG

Samsung Electronics

Step1. How to prepare the USB Memory Drive

1. Download the firmware file from Samsung.com into your computer.
File Name : **SAT-HKA19WWC.zip**
2. Connect the USB Memory Drive to the USB port of your PC.
Copy the file to USB Memory Drive.
3. Go to the USB Memory Drive, and then unzip the file stored in the USB memory drive.
4. Confirm that a folder containing the firmware files has been added to the USB memory drive.
5. Confirm that USB Drive has a folder named '**SAT-HKA19WWC**' in the root directory.



6. Safely disconnect the USB memory drive by clicking in '**Safely Remove**' in Task Bar.

Step2. How to upgrade the Firmware by USB

1. Update the Soundbar Main Unit

- 1) Turn on the Soundbar and insert the USB drive into the SERVICE port located on the bottom of the Main Unit. The software will begin to update automatically in less than one minute.
- 2) A sequence of “UPDATE” → “BYE” → “ON” will appear on the display 3 times.
- 3) After the 3 cycles are complete, the Soundbar will restart and last source used will appear on the display for about 20 seconds and then it will go off





(“UPDATE → BYE → ON”) 3 times → “D.IN” → OFF

- ※ The time to complete step 2) will be around 10 minutes
- ※ Cycle and duration of update may differ by models
- ※ **Important : DO NOT turn off the power until the full update is complete.**

[For Q90R/Q950R only]

2. Update the Subwoofer and Surround Speakers (Left / Right)

※ **Move the woofer/rear speakers near the soundbar before start update**

- 1) Disconnect and Reconnect electrical power to each component in the following order: Subwoofer → Left and Right Surround Speakers
- 2) With the unit powered on, briefly press the “VOLUME” on the remote ()
- 3) Press and hold the “DOWN” button on the remote () for about 6 seconds, until the display shows “UPDATE”
- 4) “UPDATE” → “BYE” → “ON” will appear on the display
- 5) After the update, the Soundbar will restart and last source used will appear on the display for about 20 seconds and then it will go off

- ※ The time to complete step 3) will be around 10 minutes
- ※ **Important : DO NOT turn off the power until the full update is complete.**