





Contents

Preparation

Installing network	3
Checking before using a wireless router	3
Connecting network	3
Connecting the wireless IP router with an air conditioner	3
Checking Wi-Fi module installation	4
Disassembling the Wi-Fi module	4
Assembling the Wi-Fi module	5
Checking the connection status on the panel-display	5
Checking network	6
Connecting the wireless router with an air conditioner by the network (Select one of the 2 methods)	7
Registering service	12
Registering an air conditioner	12

Basic function

Operating Smart A/C application	14
Home screen	14
Accessing In-home	14
Controlling an air conditioner	15
Setting additional functions of the air conditioner	16
Setting timer function	16
Setting air conditioner information	17
Accessing Out-of-home	18

Others

Troubleshooting	19
Open Source Announcement	20
Reference	21



WARNING

- i. RF exposure warning statement – for keeping 20cm distance when installing this module.
- ii. Warning that this module should not be installed and operating simultaneously with other radio without additional evaluation or FCC filing.
- iii. instruction for host system labeling, the host system should have proper label showing that it "Contains FCC ID : A3LSWL-B70F"





Installing network

[Connecting Network]

Connect the wireless IP router to an air conditioner.



[Registering service]

Access the <http://www.samsungsmartappliance.com> and register the service.

Checking before using a wireless router

* This Wi-Fi Aircon support only below three encryption.

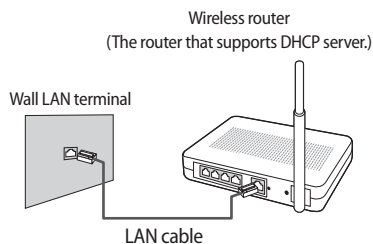
- Open (No encryption), WPA/TKIP, WPA2/AES
- You may not be able to establish Wi-Fi connection if other type of encryption is used.

- ▶ For Wi-Fi Aircon installation, select indoor unit location near to wireless router. In case Wi-Fi signal strength is weakened, Smart App. may be disconnected depending on the Wi-Fi signal strength.
- ▶ Smart-Phone should be in the Wi-Fi signal zone to use Smart App.
- ▶ For Mobile broadband internet access, Smart App. can be used when Mobile Broadband Dongle is activated to use Wi-Fi.
- ▶ This product supports only DHCP(Dynamic Host Configuration Protocol). If users use an existing wireless router, the DHCP server option function should be activated.
- ▶ Select a channel for the wireless router that is not currently being used.
- ▶ If a wireless router is connected by other than the above modes, the router may not be connected with the air conditioner or may not work. To use 802.11n, using WPA2/AES is recommended.
- ▶ The quality of wireless network connection can be affected by the surrounding wireless environment.
- ▶ If an internet service provider has permanently registered the users PC or MAC address (a unique identifying number), the air conditioner might not be connected to internet. When appliances other than a PC are to be connected to Internet, ask your ISP (Internet service provider) about the procedures required to connect to the internet.
- ▶ If your internet service provider requires an ID or a password to connect to the internet, your air conditioner may not be able to connect to the internet. If this is the case, you must enter your ID or password when connecting to the internet.
- ▶ The internet connection may fail because of a firewall problem. If this is the case, contact your internet service provider.
- ▶ If you cannot connect to the internet even after you have followed the procedures of your internet service provider, please contact a samsung service center.

Connecting network

Connecting the wireless IP router with an air conditioner

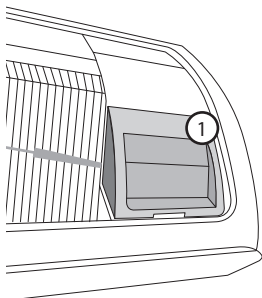
- ▶ For wireless router installation, refer to the user manual of the corresponding router.
- ▶ Samsung smart air conditioner supports the communication protocols of IEEE802.11 b/g/n(2.4Ghz).
- ▶ For wireless router installation, refer to the user manual of each manufacturing company.
Samsung does not provide customers with the wireless router manual.
- ▶ Uncertified router may not be able to connect with an air conditioner.
- ▶ Certified router has the logo of below on the package or user manual.





Connecting network

Checking Wi-Fi module installation



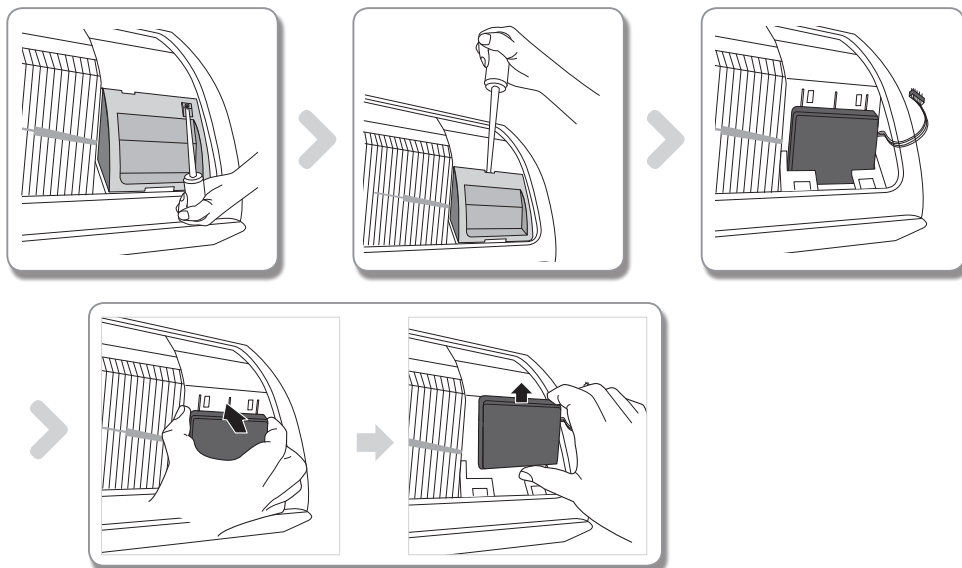
- ▶ Open the filter cover and check the Wi-Fi Module (①) attached on the panel front. The connection status between the Wi-Fi module and the wireless router can be checked by the Wi-Fi module described next page.
- ▶ To replace the Wi-Fi module(Assembling or disassembling), follow the procedure below.



NOTE

- When changing the Wi-Fi module, you should check the MAC attached on the module or bottom part of the indoor unit and modify the device information at 'Registering service'.

Disassembling the Wi-Fi module

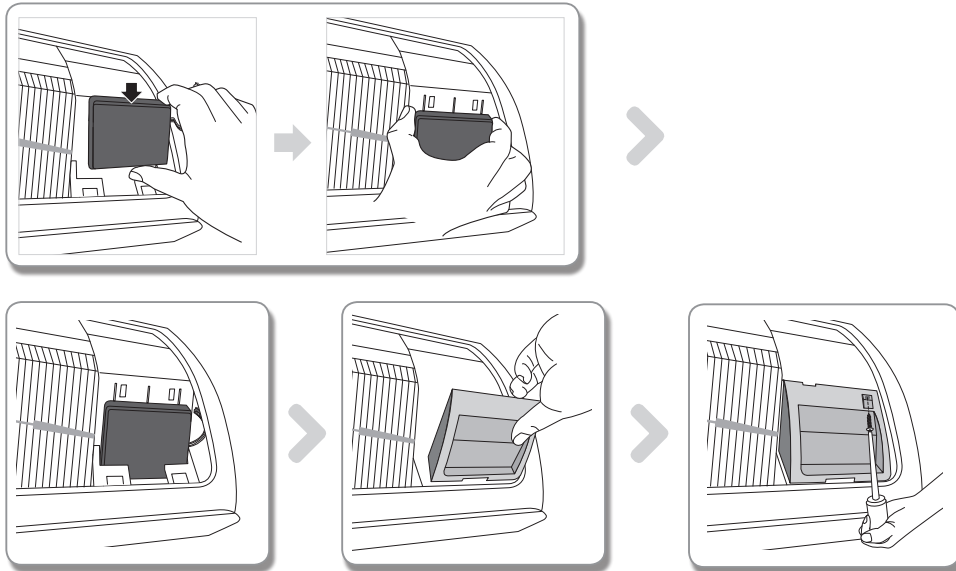


1. Remove the cover of the sub panel.
2. Disconnect the wire of the Wi-Fi module.
3. Release the hook on the top of the Wi-Fi module and push it up to disassemble it.





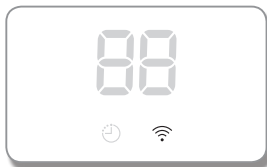
Assembling the Wi-Fi module



01 PREPARATION

1. Push the Wi-Fi module down into a slot and fix the hook on the top.
2. Connect the wire of the Wi-Fi module.
3. Close the cover of the sub panel.

Checking the connection status on the panel-display



► Wi-Fi display description

- 1) Wi-Fi Indicator LED off :
Not connected with AP
Not connected with internet
- 2) Wi-Fi Indicator LED blinking :
Connected with AP
Not connected with internet
- 3) Wi-Fi Indicator LED on :
Connected with AP
Connected with internet

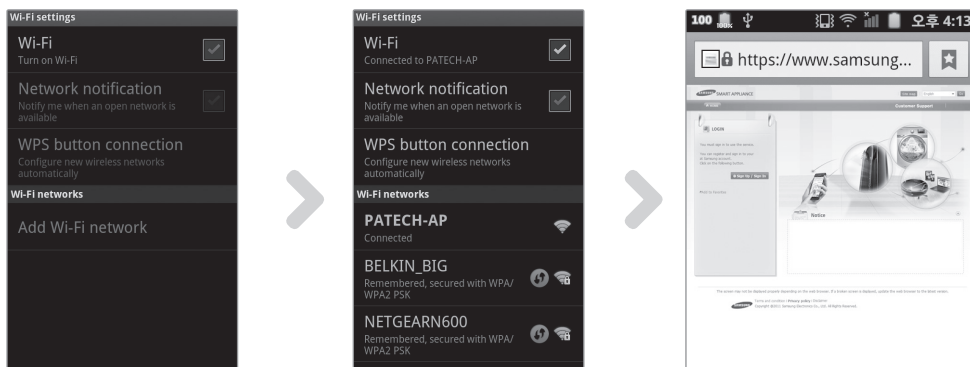


Connecting network

Checking network

Check whether the wireless router connects with a smart phone.

When the internet is not connected with a smart phone, the network function of the air conditioner cannot be used.



1. Search for the wireless router on the smart phone.
2. Select the wireless router you are using now on the searched wireless router list.
3. Check whether the smart phone can access the website <http://www.samsungsmartappliance.com> by the internet.



NOTE

- If you need ID and Password to use the internet at commercial building, inform the network administrator of MAC address of your air conditioner and get the approval of internet use for the air conditioner.



CAUTION

- If private program installation of ISP is needed for internet use, the air conditioner cannot be connected with the internet.



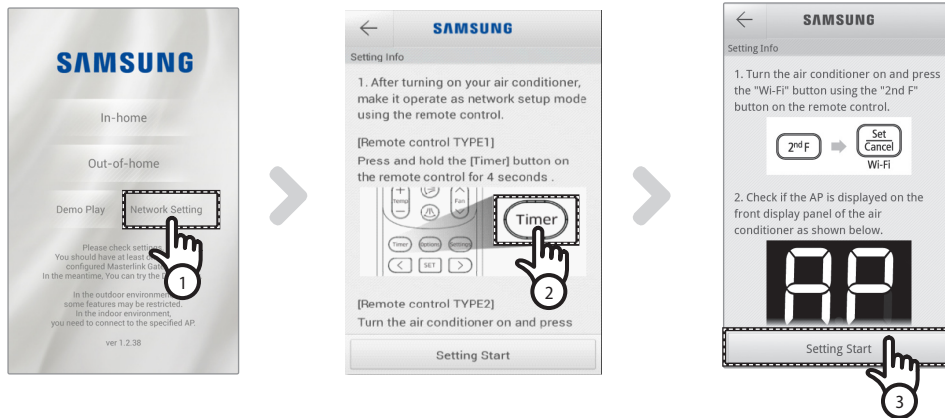
Connecting the wireless router with an air conditioner by the network (Select one of the 2 methods)

Connecting network with a Smart phone APP

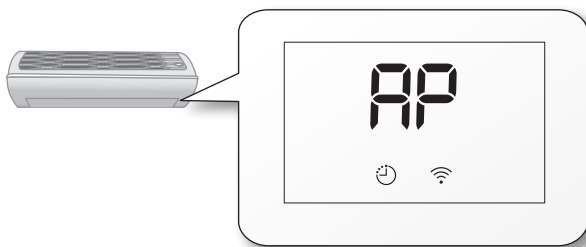
Setting application on Samsung smart phone (Android based smart phone)



- Android based smart phone users can download the Smart A/C application by searching 'Samsung, Smart, A/C, AC, Air, Conditioner' at android market or Samsung Apps.



- After operating Smart A/C application, press the [Network Setting] tab.
- [Remote control TYPE 1] After pressing and holding the [Timer] button on the remote control for 4 seconds.
[Remote control TYPE 2] After pressing the [2ndF] button on the remote controller, press the [Wi-Fi] button.
 - AP message will be displayed on the front display panel of the air conditioner.



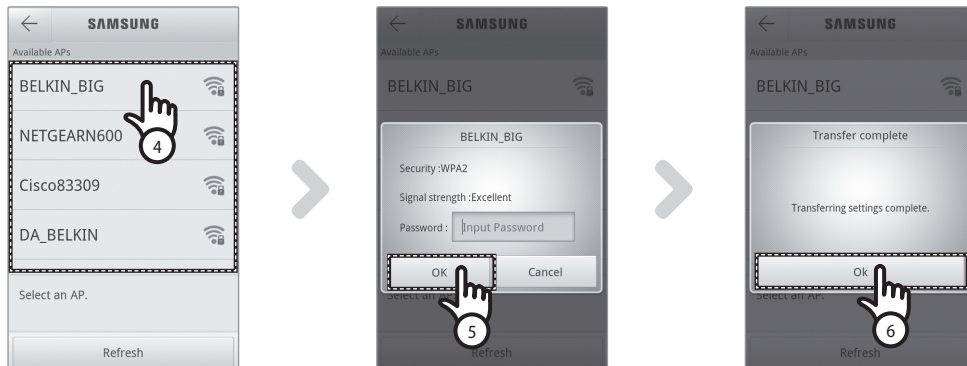
- Press the [Setting Start] tab.






- The program version of the picture in this manual is only for reference. Please according to the actual.



Connecting network



4. Select the wireless router that you are using now.
 - When using free wireless router, refer to the corresponding user manual for password.
5. After entering the password of selected wireless router, press the [OK] tab.
 - When the password has not been set, press the [OK] tab without entering the password.
6. When 'Transfer complete' pop up comes on, press the [OK] tab.
 - When the Wi-Fi () indicator is on, the air conditioner is connected with wireless router and the internet.
 - When the Wi-Fi () indicator blinks, the air conditioner is connected to wireless router but not with internet. In this case, check the internet connection.
 - When the Wi-Fi () indicator is off, the air conditioner is not connected with wireless router and the internet.
7. After 1~2 minutes, if the Wi-Fi LED of the air conditioner is still on, it means the configuration has succeeded. At this point, you can use smart phone to control the system.



- Smart A/C application is optimized with Samsung smart phones. Supported models are; Samsung Galaxy Phone series and other models can be added in the future. When the Smart A/C application is used with other smart phones, some functions may not work.

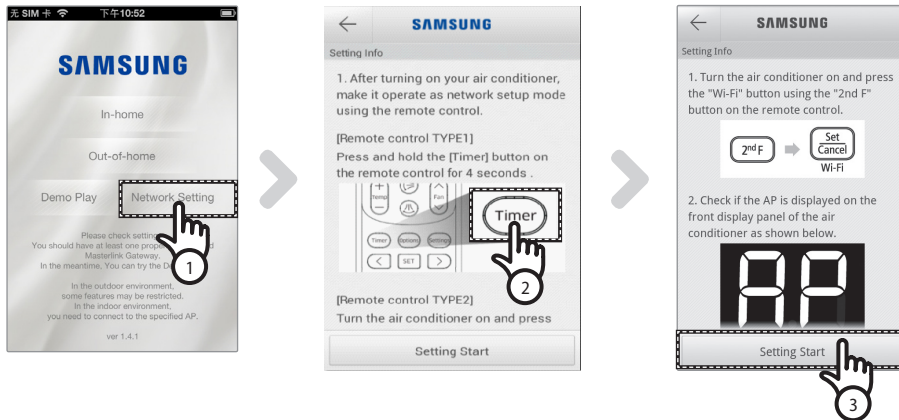




Setting application on iPhone

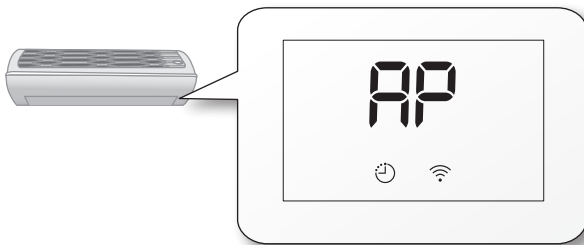


- iPhone users can download the Smart A/C application by searching 'Samsung, Smart, A/C, AC, Air, Conditioner' at Apple App store.



01 PREPARATION

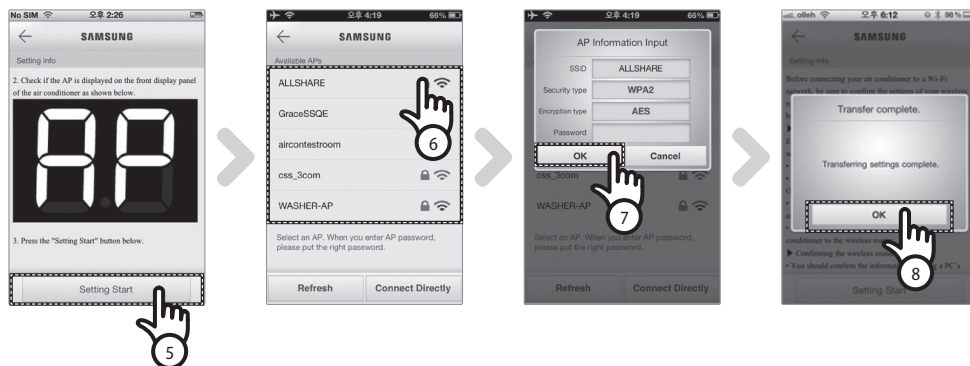
1. [Remote control TYPE 1] After pressing and holding the [Timer] button on the remote control for 4 seconds.
[Remote control TYPE 2] After pressing the [2ndF] button on the remote controller, press the [Wi-Fi] button.
- **AP** message will be displayed on the front display panel of the air conditioner.



2. Select [Settings] → [Wi-Fi] on your iPhone.
3. From the list of Wi-Fi, select SMARTAIRCON and enter '1111122222' as password.
4. After operating Samsung Smart A/C application, press the [Network Setting] tab.



Connecting network



5. Press the [Setting Start] tab.
6. Select the wireless router that you are using now.
 - When using free wireless router, refer to the corresponding user manual for password.
7. After entering the password of selected wireless router, press the [OK] tab.
 - When the password has not been set, press the [OK] tab without entering the password.
8. Enter the information of wireless router and press the [OK] tab.
 - Required information is; SSID, Security type, Encryption type and Password.



- If you do not know the information of wireless router, check its manual or contact your ISP (internet service provider).

9. When 'Transfer complete' pop up comes on, press the [OK] tab.
10. Select [Settings] → [Wi-Fi] on your iPhone.
11. Select the wireless router that you are using, and enter the password.
 - When the Wi-Fi () indicator is on, the air conditioner is connected with wireless router and the internet.
 - When the Wi-Fi () indicator blinks, the air conditioner is connected to wireless router but not with internet. In this case, check the internet connection.
 - When the Wi-Fi () indicator is off, the air conditioner is not connected with wireless router and the internet.
12. After 2 minutes, if the Wi-Fi LED of the air conditioner is still on, it means the configuration has succeeded. At this point, you can use smart phone to control the system.



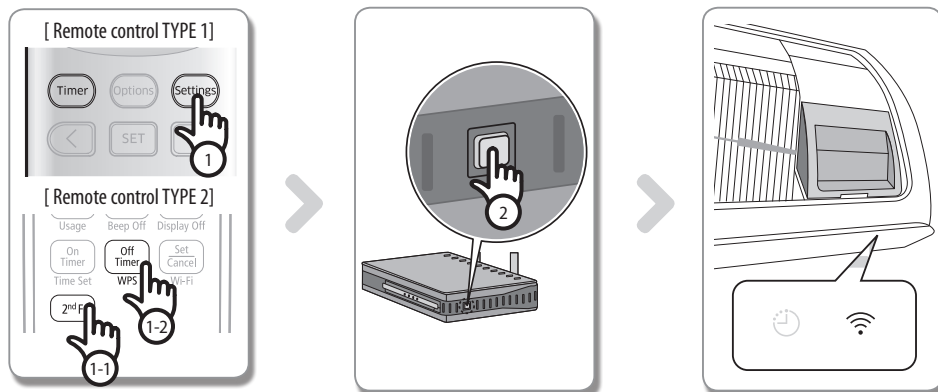
- When searching a network by pressing the [Wi-Fi] button, AP message will be displayed on the front display a maximum of 5 minutes.



- Supported models are; iPhone 4, iPhone 4S, iPhone5 and other models can be added in the future.



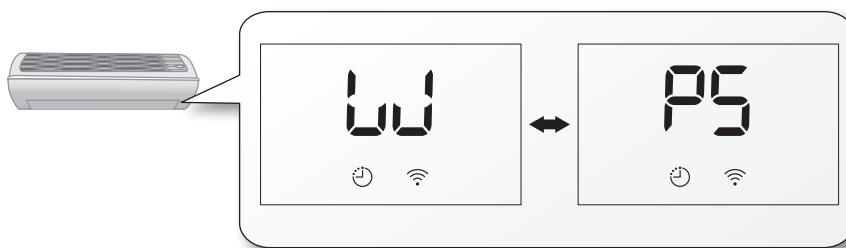
Connecting network with WPS setting



1. [Remote control TYPE 1] After pressing and holding the [Setting] button on the remote control for 4 seconds.

[Remote control TYPE 2] After pressing the [2ndF] button on the remote controller, press the [WPS] button.

- **W** → **P** message will be displayed on the front display panel of the air conditioner.



2. Press [WPS] button on the wireless router that will be connected to an air conditioner and operate the WPS function of the wireless router. (The location of WPS button may be different depending on the wireless manufacturing company.)
3. After connecting the air conditioner with the wireless router correctly, the Wi-Fi (📶) light on the Wi-Fi module will be on.



- Check whether the wireless router supports Wi-Fi Protected Setup™(WPS).
- Check whether the wireless router has WPS button.
- Samsung smart air conditioner uses PBC method of WPS.
- When searching a network by pressing [WPS] button, the remote controller will not work for a maximum of 2 minutes.
- Be careful when pressing the WPS button because if you hold the WPS button for a long time, the set value of the wireless router will be initialized with some types of wireless router.
- Operating wireless router through WPS mode might be different depending on the manufacturing company. Therefore, please refer to the user manual of your wireless router.

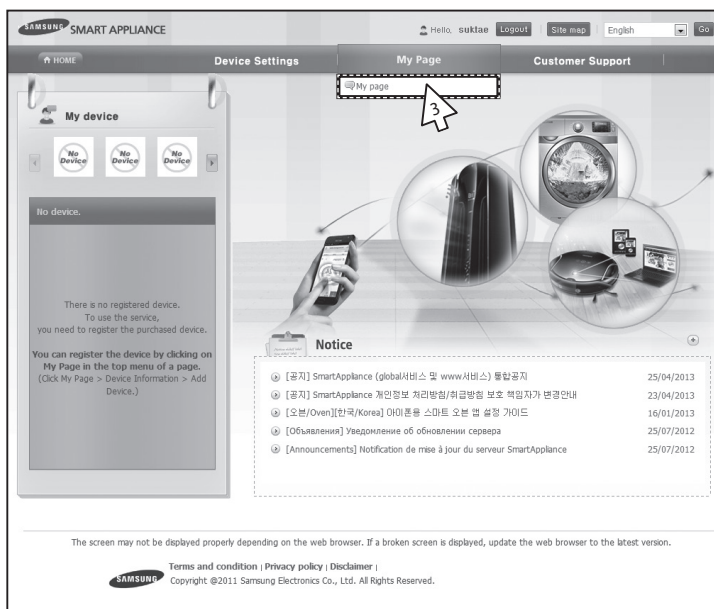


- If the wireless router(AP) is not authenticated with WPS, connection failure might occur.
- Some of the wireless routers (including wireless routers that are not authenticated with WPS) may lose connection with previously connected devices when the air conditioner establishes connection with wireless router.

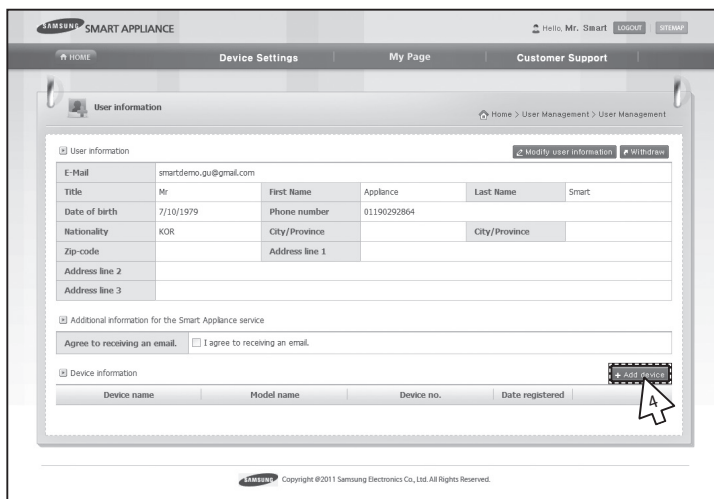
Registering service

Registering an air conditioner

1. Access Samsung Smart appliance website (<http://www.samsungsmartappliance.com>).
2. Enter the User ID and Password to log in.
 - If you don't have an account, press [Create a Samsung account] and fill in the form to become a member .



3. Select [My page]→[My page].



4. Select [Add device] .



SMART APPLIANCE

Device Settings | My Page | Customer Support

Home > My page > Add my device

1. Confirm about

Device no. []

2. After device registration please select the Product tab.

Standing air conditioner

You must be authorized before adding the air conditioner.

Type the number, which is displayed on the label attached to the bottom right of the purchased air conditioner into the [Device no.] field correctly.

Sample Label: MAC 00-2E-E8-B6-45-3B

1. Type only the numbers and character(s) of the 12 digit code next to the MAC address (not the " ").

2. Press the [Certify device] button and then turn on the air conditioner. If the air conditioner is already turned on, turn it off. Then turn it on again to check if the Wi-Fi connection is operating correctly.

Well-mount air conditioner

You must be authorized before adding the air conditioner.

Type the number displayed on the label attached to the bottom right of the purchased air conditioner or the module into [Device no.] field.

Sample Label: Device Number 00A2B3C3D4

1. Type only the numbers and character(s) next to the Device Number.

2. Press the [Certify device] button and then turn on the air conditioner. If the air conditioner is already turned on, turn it off. Then turn it on again to check if the Wi-Fi connection is operating correctly.

3. The following device has been certified. Press the OK button to continue the device registration. Certified device: Smart Air Conditioner

확인

5. After entering the MAC written on the label sticker attached on the bottom part of the air conditioner, click the [Certify device].
6. Restart the air conditioner you are using now.
7. When the device certification message appears, click [OK].
 - If the air conditioner you are registering is already registered by other users, a window will come on asking whether you want to delete the usage authority of the existing users, or not.

SMART APPLIANCE

Hello, Insung | LOGIN | MYMAP | English

HOME | Device Settings | My Page | Customer Support

Home > My page > My page

My page

1. User information

Modify user information | Withdraw

E-Mail: insung.choi@samsung.com

Title: Mr. First Name: Insung, Last Name: Choi

Date of birth: 18/02/1985, Phone number: []

Nationality: KOR, City/Province: []

Zip-code: [], Address line 1: [], Address line 2: [], Address line 3: []

2. Device information

Add device

No.	Device name	Model name	Device no.	Date registered	
1	Smart A/C(7825AD101DEE)	2012 Smart Air Conditioner	7825AD101DEE	25/06/2012	Delete Modify User

The screen may not be displayed properly depending on the web browser. If a broken screen is displayed, update the web browser to the latest version.

SAMSUNG Terms and condition | Privacy policy | Disclaimer

Copyright ©2011 Samsung Electronics Co., Ltd. All Rights Reserved.

8. After the registration of the air conditioner is completed, you can check the registered air conditioner on the device information list.



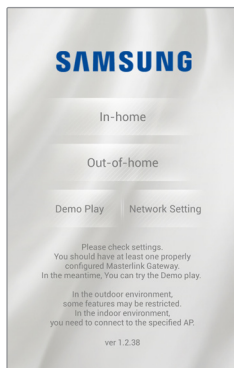
- When changing a Wi-Fi module, perform the procedure above in order from No.1.



Operating Smart A/C application

- ▶ Android based smart phone users can download the Smart A/C application by searching 'Smart Air Conditioner' at android market(Google Play Store) or Samsung Apps.
- ▶ iPhone users can download the Smart A/C application by searching 'Smart Air Conditioner' at Apple APP store.

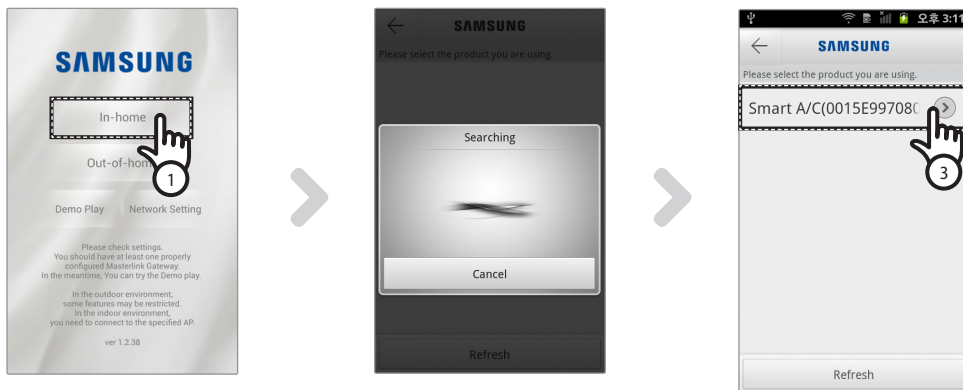
Home screen



In-home	You can control your air conditioner at home.
Out-of-home	You can control your air conditioner outside your home.
Demo Play	You can test the functions of Smart A/C application.
Network Setting	Set the air conditioner network.

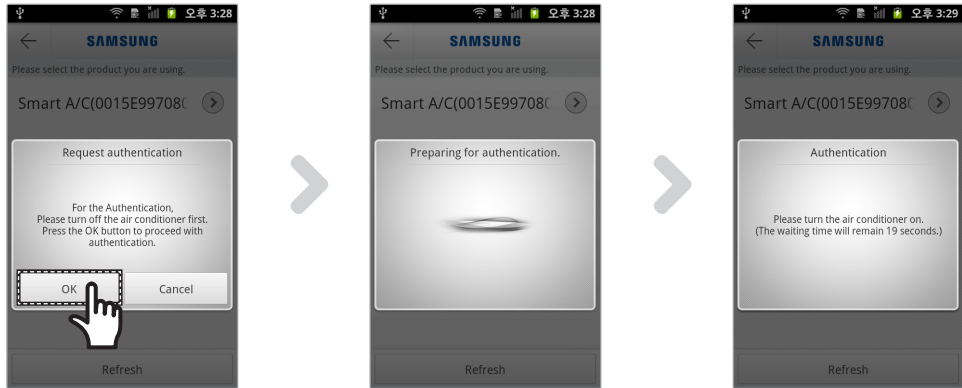
Accessing In-home

- ▶ Use Smart A/C application for the replacement of a remote controller at home.



1. Press the [In-home] tab on home screen.
2. Search for the air conditioner.
 - When you cannot find the air conditioner you want to select, press the [Refresh] to search it again.
3. Select the air conditioner you want to access.





4. Before you first access your air conditioner, you should get authentication.
When authentication pop-up comes on, turn on the air conditioner within 20seconds.
After getting the authentication successfully, you can log on to the air conditioner.

Controlling an air conditioner

- ▶ Check the control function of the air conditioner at AC control screen.



Mode	Set the basic operation of the air conditioner.
Option	Set the additional function of the air conditioner.
Timer	Set the On or Off timer function of the air conditioner.
Settings	Set the name of network or air conditioner.

- ▶ Set the operation mode of the air conditioner by pressing the [Mode] tab.



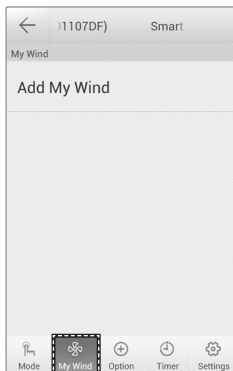
①	Power ON/OFF	Turn the air conditioner on or off.
②	Mode	Select Auto, Cool, Dry, Fan, or Heat.
③	Desired temperature	Select the desired temperature of the air conditioner.
④	Current temperature	Display current temperature of indoor room.



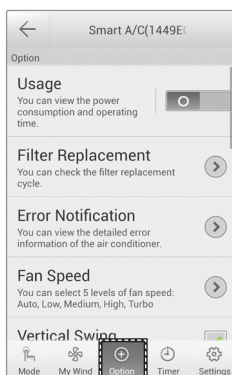
Operating Smart A/C application

Setting additional functions of the air conditioner

- ▶ You can control the additional functions the air conditioner supports.
- ▶ The additional functions will be activated depending on the air conditioner functions.
- ▶ My Wind, Usage, Filter Replacement, Error Notification, Color Of Wind function can be controlled only through the application. You must be connected to Wi-Fi and run the application in order to use these functions.



1. The user save the function for me with establishment.
Air-conditioner can be controlled easily.

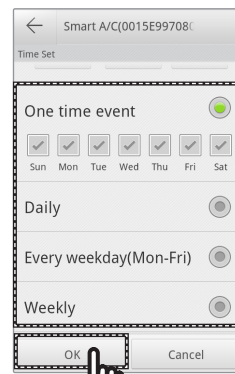
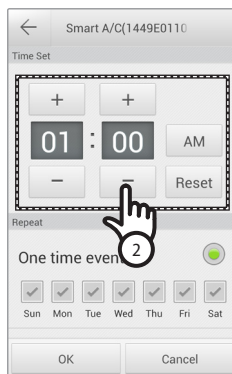
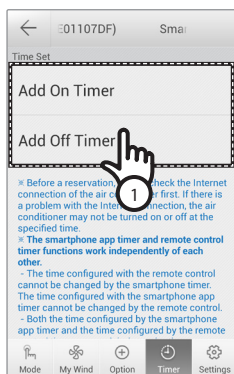


1. Press the [Option] tab at the bottom of the screen.
2. Select the operation mode or additional functions you want.



• For the details of each additional function, refer to the user manual of each air conditioner.

Setting timer function



1. After pressing the [Timer] tab at the bottom of the screen, press the [On Timer] or [Off Timer] tab.
 - When you want to set on time, press the [On Timer] tab or [Off Timer] tab for off time.
2. Press the [+], [-] or [AM], [PM] tab to set the on time or off time.
3. After setting repetition cycle, press the [OK] tab.



• On time and off time cannot be set at the same time.

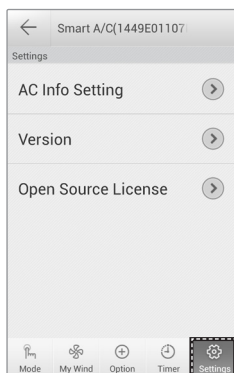
English-16



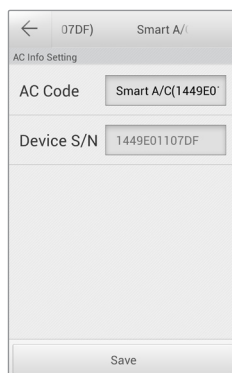
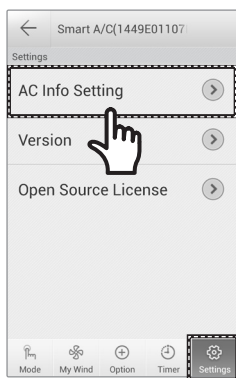


Setting air conditioner information

- Change air conditioner information or see the App version information, Open Source License by pressing the [Settings] tab.



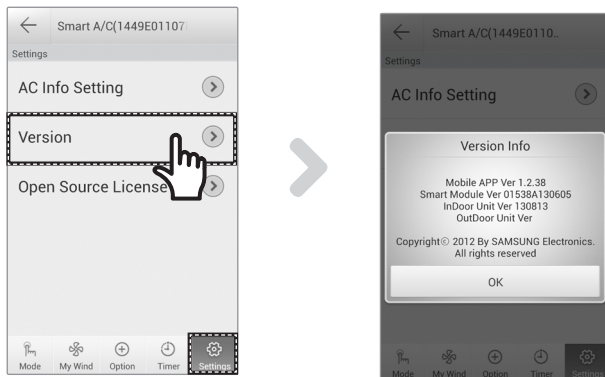
- Set the name of the air conditioner by pressing the [AC Info Setting] tab.





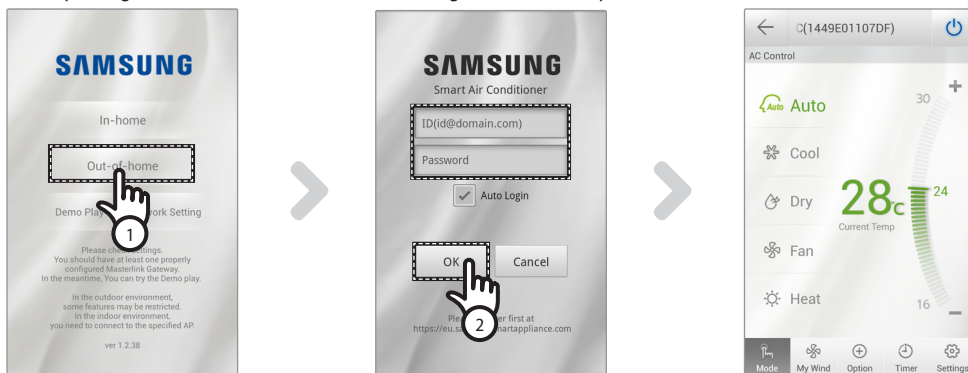
Operating Smart A/C application

- ▶ Check the APP version by pressing the [Version] tab.



Accessing Out-of-home

1. Press the [Out-of-home] tab.
 2. After entering the ID and Password of Samsung Smart appliance website, press the [OK] tab.
 3. Control your air conditioner outside home.
- Operating the Out-of-home is the same as 'Accessing In-home'(refer to p12)



NOTE

- You need to log in to operate Out-of-home.
Enter the the ID and Password that you used to register the network service. If you haven't joined the membership, join the membership and register your air conditioner at <http://www.samsungsmartappliance.com> .
- When accessing the air conditioner with Out-of-home, you cannot use additional functions of the air conditioner.



Troubleshooting

Before you make a call to a service center, please check the items in the table below.

Check point		Solution
Air conditioner cannot be found at Smart A/C application.	Check whether the Wi-Fi of the Smart phone is activated.	Activate the Wi-Fi connection of the Smart phone.
	Check whether the Smart phone and the air conditioner are connected to different wireless routers	The Smart phone and the air conditioner should be connected to the same wireless router.
	Check whether the Wi-Fi () light on the display is on.	Check whether the air conditioner is correctly connected to a wireless router.
The Smart phone is connected to the air conditioner correctly but it does not work.		Restart the Smart A/C application or reconnect the Smart phone with the wireless router.
When selecting In-home function of the Smart A/C application, multiple appliances are searched.		Select the air conditioner whose device number is the same as your air conditioner on the list.
I don't have ID and Password to log in to Out-of-home of Smart A/C application.		Join the membership at Samsung Smart appliance website (http://www.samsungsmartappliance.com) and register your air conditioner.
Out-of-home function of Smart A/C application does not work.	Check whether the Wi-Fi () light on the display is on.	Check whether the air conditioner is connected to the wireless router correctly.
	Check whether the Wi-Fi () light on the display blinks at an interval of 0.5 sec.	Check whether the wireless router is connected to internet correctly.



Open Source Announcement

The software included in this product contains open source software. You may obtain the complete corresponding source code for a period of three years after the last shipment of this product by sending an email to mailto:oss.request@samsung.com.

It is also possible to obtain the complete corresponding source code in a physical medium such as a CD-ROM; a minimal charge will be required.

The following URL http://opensource.samsung.com/opensource/RAC_INV/seq/0 leads to the download page of the source code made available and open source license information as related to this product. This offer is valid to anyone in receipt of this information.





Reference

English	Hereby, Samsung Electronics, declares that this Air conditioner is in compliance with the essential requirements and other relevant provisions of Directive 1999/5/EC. The original Declaration of conformity may be found at http://www.samsung.com/support > Enter a product name or model number. This equipment may be operated in all EU countries. In France, this equipment may only be used indoors.
Czech	Společnost Samsung Electronics tímto prohlašuje, že tento systém klimatizace splňuje základní požadavky a další související ustanovení Směrnice 1999/5/ES. Originální prohlášení o shodě lze nalézt na http://www.samsung.com/support > Zadejte název produktu nebo číslo modelu. Toto zařízení lze používat ve všech zemích EU. Ve Francii lze toto zařízení používat pouze ve vnitřních prostorách.
Danish	Samsung Electronics erklærer herved, at dette luftkonditioneringsanlæg overholder de grundlæggende krav og andre relevante bestemmelser i Direktiv 1999/5/EC. Den originale overensstemmelseserklæring kan findes på http://www.samsung.com/support > Indtast et produktnavn eller modelnummer. Dette udstyr må bruges i alle EU-lande. I Frankrig må dette udstyr dog kun bruges indendørs.
German	Samsung Electronics erklärt hiermit, dass dieses Klimagerät konform zu allen wesentlichen Anforderungen oder relevanten Bestimmungen der Richtlinie 1999/5/EG ist. Die original Übereinstimmungserklärung finden Sie auf http://www.samsung.com/support >, und geben Sie den Produktnamen oder die Artikelnummer ein. Dieses Gerät darf in allen EU-Ländern betrieben werden. In Frankreich darf dieses Gerät nur in Gebäuden verwendet werden.
Estonian	Käesolevaga kinnitab ettevõtte Samsung Electronics selle kliimaseadme vastavust direktiivi 1999/5/EÜ põhinõuetele ja nimetatud direktiivist tulenevatele teistele asjakohastele sätetele. Vastavusdeklaratsioon asub aadressil http://www.samsung.com/support > Sisestage tootenimi või mudelinumber. Seda seadet võib kasutada kõigis EL riikides. Prantsusmaal võib seda seadet kasutada üksnes siseruumides.
Spanish	Por el presente documento Samsung Electronics declara que este aparato de aire acondicionado cumple los requisitos fundamentales y demás disposiciones pertinentes de la Directiva 1999/5/CE. Se puede encontrar la Declaración de conformidad original en http://www.samsung.com/support > Ingrese el nombre de un producto o número de modelo. Este equipo puede ser operado en todos los países de la unión europea. En Francia, este equipo sólo puede ser utilizado en interiores.
Greek	Με την παρούσα, η Samsung Electronics δηλώνει ότι αυτό το κλιματιστικό συμμορφώνεται με τις ουσιαστικές απαιτήσεις και τις λοιπές σχετικές διατάξεις της Οδηγίας 1999/5/ΕΚ. Η πρωτότυπη Δήλωση συμμόρφωσης διατίθεται στο http://www.samsung.com/support > Εισαγάγετε όνομα προϊόντος ή αριθμό μοντέλου. Ο παρών εξοπλισμός μπορεί να λειτουργήσει σε όλες τις χώρες της Ευρωπαϊκής Ένωσης. Στη Γαλλία, ο παρών εξοπλισμός μπορεί να χρησιμοποιηθεί μόνο σε εσωτερικό χώρο.
French	Par la présente, Samsung Electronics déclare que ce climatiseur est conforme aux exigences essentielles et autres dispositions applicables de la directive 1999/5/CE. La Déclaration originale de conformité se trouve sur http://www.samsung.com/support > Saisissez un nom de produit ou un numéro de modèle. Cet équipement peut fonctionner dans tous les pays de l'Union européenne. En France, toutefois, il ne peut être utilisé qu'à l'intérieur.
Italian	Samsung Electronics dichiara qui di seguito che i requisiti essenziali di questo Climatizzatore sono conformi alle prescrizioni ed alle altre imposizioni ad essi relative che sono contenute nella Direttiva 1999/5/CE. L'originale della Dichiarazione di Conformità è disponibile sul sito < http://www.samsung.com/support > Impostare il nome o il modello di un prodotto. Questo dispositivo funziona in tutti i Paesi dell'UE. In Francia, questo dispositivo può essere utilizzato solo al chiuso.
Latvian	Ar šo Samsung Electronics deklarē, ka šis gaisa kondicionieris atbilst visām pamatprasībām un attiecīgajiem nosacījumiem, kas izklāstīti Direktīvā 1999/5/EG. Oriģinālo Atbilstības deklarāciju var atrast: http://www.samsung.com/support > Ievadiet produkta nosaukumu vai modeļa numuru. Šo aprīkojumu var lietot visās ES valstīs. Francijā šo aprīkojumu drīkst lietot tikai telpās.
Lithuanian	„Samsung Electronics“ patvirtina, kad šis oro kondicionierius atitinka pagrindinius Direktyvos 1999/5/EB reikalavimus ir kitas atitinkamas nuostatas. Suderinamumo deklaracijos originalą galima rasti internete adresu http://www.samsung.com/support > Įveskite gaminio pavadinimą arba modelio numerį. Šią įrangą galima naudoti visose ES šalyse. Prancūzijoje šią įrangą galima naudoti tik patalpose.
Dutch	Hierbij verklaart Samsung Electronics dat deze airconditioner voldoet aan de essentiële vereisten en overige relevante bepalingen van Richtlijn 1999/5/EG. De originele conformiteitsverklaring kunt u vinden op http://www.samsung.com/support > Voer een productnaam of modelnummer in. Deze apparatuur mag in alle EU-landen worden gebruikt. In Frankrijk mag deze apparatuur alleen binnenshuis worden gebruikt.
Hungarian	A Samsung Electronics ezennel kijelenti, hogy ez a Légkondicionáló berendezés megfelel az 1999/5/EK irányelv alapvető követelményeinek és egyéb rendelkezéseinek. Az eredeti Megfelelési Nyilatkozat megtalálható a következő címen: http://www.samsung.com/support > Adj a meg a terméknevet vagy típusszámot. Ez a berendezés az Európai Unió minden országában üzemeltethető. Franciaországban ez a készülék csak beltérben használható.



Reference

Polish	Firma Samsung Electronics oświadcza, że niniejszy klimatyzator spełnia najważniejsze wymagania i inne odpowiednie postanowienia Dyrektywy 1999/5/WE. Oryginalną deklarację zgodności można znaleźć pod adresem http://www.samsung.com/support > Wprowadź nazwę produktu lub numer modelu. Z tego urządzenia można korzystać we wszystkich krajach Unii Europejskiej. W Francji z tego urządzenia można korzystać wewnątrz budynków.
Portuguese	A Samsung Electronics declara que este aparelho de ar condicionado está em conformidade com os requisitos essenciais e outras provisões relevantes da Directiva 1999/5/CE. A Declaração de conformidade original está disponível em http://www.samsung.com/support > Introduza o nome do produto ou o número do modelo. Esse equipamento pode ser utilizado em todos os países da EU. Na França, esse equipamento só poderá ser utilizado em espaços interiores.
Slovenian	Samsung Electronics izjavlja, da ta klimatska naprava izpolnjuje bistvene zahteve in druga ustrezna določila Direktive 1999/5/ES. Izvirnik izjave o skladnosti je na voljo na spletni strani http://www.samsung.com/support > vnesite ime izdelka ali številko modela. To opremo lahko uporabljate v vseh državah EU. V Franciji lahko to opremo uporabljate le znotraj.
Slovak	Spoločnosť Samsung Electronics týmto vyhlasuje, že táto klimatizácia je v súlade s nevyhnutnými požiadavkami a príslušnými ustanoveniami smernice 1999/5/ES. Originálne prehlásenie o zhode môžete nájsť na adrese http://www.samsung.com/support > Zadaťte názov produktu a číslo modelu. Toto zariadenie môže byť v prevádzke vo všetkých európskych krajinách. Vo Francúzsku môžete toto zariadenie používať iba vo vnútri.
Finnish	Samsung vakuuttaa, että tämä ilmastointilaitte on direktiivin 1999/5/EY oleellisten vaatimusten ja muiden määräysten mukainen. Alkuperäinen vaatimustenmukaisuusvakuutus on osoitteessa http://www.samsung.com/support > Anna tuotteen nimi tai mallinumero. Tätä laitetta voidaan käyttää kaikissa Euroopan unionin maissa. Ranskassa tätä laitetta voidaan käyttää vain sisätiloissa.
Swedish	Härmed intygar Samsung Electronics att denna luftkonditionering uppfyller de väsentliga kraven och övriga relevanta bestämmelser som framgår av direktiv 1999/5/EG. Den ursprungliga försäkran om överensstämmelse finns på http://www.samsung.com/support > Ange ett produktnamn eller modellnummer. Den här utrustningen får användas i alla EU-länder. Den här utrustningen får endast användas inomhus i Frankrike.
Bulgarian	С настоящето Samsung Electronics декларира, че този климатик е в съответствие с основните изисквания и други приложими разпоредби на Директива 1999/5/EC. Оригиналната Декларация за съответствие се намира на адрес http://www.samsung.com/support > Въведете име на продукта или номер на модела. С това оборудване може да се работи във всички държави от ЕС. Във Франция това оборудване може да се използва само на закрито.
Romanian	Prin prezenta, Samsung Electronics declară că acest aparat de aer condiționat este în conformitate cu cerințele esențiale și alte prevederi relevante ale Directivei 1999/5/CE. Declarația de conformitate originală se poate găsi pe http://www.samsung.com/support > Introduceți un nume de produs sau un număr de model. Acest echipament poate fi folosit în toate statele UE. În Franța, acest echipament poate fi folosit doar în interior.
Norwegian	Samsung erklærer herved at denne luftkondisjoneringsenheten er i samsvar med de avgjørende kravene og andre relevante vilkår i direktiv 1999/5/EC. Den originale Samsvarserklæringen er tilgjengelig på http://www.samsung.com/support > Skriv inn ett produktnavn eller modellnummer. Dette utstyret kan brukes i alle EU-land. I Frankrike kan dette utstyret kun brukes innendørs.
Turkish	Bu belge ile Samsung Electronics, bu Klimanın, 1999/5/EC Yönetmeliğinin temel gerekliliklerine ve ilgili hükümlerine uygun olduğunu beyan eder. Orijinal Uyum Beyanı http://www.samsung.com/support adresinden bulunabilir > bir ürün adı veya model numarası giriniz. Bu cihaz tüm AB ülkelerinde kullanılabilir. Fransa'da bu cihaz sadece iç mekanlarda kullanılabilir.
Russian	Настоящим компания Samsung Electronics заявляет, что данный кондиционер воздуха соответствует основным требованиям и другим соответствующим положениям Директивы 1999/5/EC. Подлинную Декларацию о соответствии можно найти на сайте http://www.samsung.com/support > Введите название изделия или номер модели. Данное оборудование можно использовать без ограничений в большинстве стран ЕС. Нельзя использовать вне помещения во Франции.
Ukrainian	Компанія Samsung Electronics стверджує, що цей кондиціонер відповідає важливим вимогам та іншим відповідним положенням Директиви 1999/5/EC. Справжню Декларацію про відповідність можна знайти на сайті http://www.samsung.com/support > Введіть назву виробу або номер моделі. Це обладнання можна використовувати в усіх країнах ЄС. У Франції це обладнання можна використовувати лише на вулиці.
Serbian	Ovim putem kompanija Samsung Electronics izjavljuje da je ovaj klima uređaj usklađen sa osnovnim zahtevima i drugim primenljivim odredbama direktive 1999/5/EC. Originalnu Deklaraciju o usaglašenosti možete naći na http://www.samsung.com/support > Unesi naziv proizvoda ili broj modela. Ova oprema se može koristiti u svim zemljama EU. U Francuskoj ova oprema može da se koristi samo unutar prostorija.
Croatian	Samsung Electronics ovime izjavljuje da je ovaj klima uređaj usklađen s osnovnim zahtjevima i drugim relevantnim odredbama Direktive 1999/5/EZ. Originalna Deklaracija sukladnosti nalazi se na: http://www.samsung.com/support > Unesite naziv proizvoda ili broj modela. Ova oprema može se koristiti u svim državama članicama EU. U Francuskoj se ovaj uređaj može koristiti samo u zatvorenom prostoru.





03 OTHERS



SAMSUNG

Smart air conditioner APP can be altered without notice for quality improvement and also be deleted depending on the circumstances of manufacturing firms .



CE0678





Air conditioner

User Manual

Smart A/C application

- Thank you for purchasing this Samsung air conditioner.
- Before operating this unit, please read this user manual carefully and retain it for future reference.

**SAMSUNG**