

# SAMSUNG

# LED TV

## User Manual

SERIES 4

Figures and illustrations in this User Manual are provided for reference only and may differ from actual product appearance. Product design and specifications may be changed without notice.

### Still image warning

Avoid displaying still images (like jpeg picture files) or still image element (like TV programme logo, panorama or 4:3 image format, stock or news bar at screen bottom etc.) on the screen. Constant displaying of still picture can cause ghosting of LED screen, which will affect image quality. To reduce risk of this effect, please follow below recommendations:

- Avoid displaying the same TV channel for long periods.
- Always try to display any image on full screen, use TV set picture format menu for best possible match.
- Reduce brightness and contrast values to minimum required to achieve desired picture quality, exceeded values may speed up the burnout process.
- Frequently use all TV features designed to reduce image retention and screen burnout, refer to proper user manual section for details.

For personal and non-commercial use only. Usage is subject to following the guidelines in the User Manual and may not be available in all regions.

### Contact SAMSUNG WORLD WIDE

If you have any questions or comments relating to Samsung products, please contact the SAMSUNG customer care centre.

Country	Customer Care Centre	Web Site
VIETNAM	1800 588 889	www.samsung.com/vn/support
THAILAND	0-2689-3232, 1800-29-3232	www.samsung.com/th/support
MYANMAR	+95-1-2359-888	www.samsung.com/my/support
MALAYSIA	1800-58-9999, 603-77137477 (Overseas contact)	www.samsung.com/my/support
PHILIPPINES	1-800-10-726-7864 (PLDT Toll Free), 1-800-8-726-7864 (Globe Landline and Mobile), 02-422-2111 (Standard Landline)	www.samsung.com/ph/support
INDIA	1800 3000 8282 - Toll Free, 1800 266 8282 - Toll Free	www.samsung.com/in/support
BANGLADESH	0961-2300300, 0800-0300300 (Toll Free)	www.samsung.com/in/support
SRI LANKA	0117540540, 0115900000	www.samsung.com/suppo
EGYPT	08000-7267864, 16580	www.samsung.com/eg/support

ALGERIA	3004 (Toll Free)	www.samsung.com/n_afrika/support
IRAN	021-8255 (CE)	www.samsung.com/iran/support
SAUDI ARABIA	800 247 3457 (800 247 HELP)	www.samsung.com/sa/home
PAKISTAN	0800-Samsung (72678)	www.samsung.com/pk/support
TUNISIA	80 1000 12	www.samsung.com/n_afrika/support
U.A.E	800-SAMSUNG (800 - 726 7864)	www.samsung.com/ae/support
OMAN	800-SAMSUNG (800 - 726 7864)	www.samsung.com/ae/support
KUWAIT	183-CALL (183-2255)	www.samsung.com/ae_ar/support
BAHRAIN	8000-GSAM (8000-4726)	support (Arabic)
QATAR	800-CALL (800-2255)	support
JORDAN	0800-22273	support
SYRIA	06 5777444	www.samsung.com/levant
LEBANON	961 1484 999	support
MOROCCO	080 100 22 55	www.samsung.com/n_afrika/support
SOUTH AFRICA	0860 SAMSUNG (726 7864)	www.samsung.com/support
BOTSWANA	8007260000	support
NAMIBIA	08 197 267 864	support
ZAMBIA	0211 303070	support
MAURITIUS	800 2550	support
REUNION	0262 50 88 80	support
ANGOLA	917 267 864	support
MOZAMBIQUE	847267864 / 827267864	support
NIGERIA	0800-726-7864	www.samsung.com/africa_en/support
GHANA	0302-10077	support
COTE D'IVOIRE	8000 0077	www.samsung.com/africa_fr/support
SENEGAL	800-00-0077	support
CAMEROON	67095-0077	support
KENYA	0800 545 545	support
UGANDA	0800 300 300	support
TANZANIA	0685 889 900	www.samsung.com/support
RWANDA	9999	support
BURUNDI	200	support
DRC	499999	support
SUDAN	1999	support



BN68-08166B-01

### Important Safety Instructions

## Warning! Important Safety Instructions

(Please read the Safety Instructions before using your TV.)

CAUTION

**RISK OF ELECTRIC SHOCK DO NOT OPEN**

CAUTION: TO REDUCE THE RISK OF ELECTRIC SHOCK, DO NOT REMOVE COVER (OR BACK). THERE ARE NO USER SERVICEABLE PARTS INSIDE. REFER ALL SERVICING TO QUALIFIED PERSONNEL.

This symbol indicates that high voltage is present inside. It is dangerous to make any kind of contact with any internal part of this product.

This symbol indicates that this product has included important literature concerning operation and maintenance.

Class II product: This symbol indicates that it does not require a safety connection to electrical earth (ground).

AC voltage: This symbol indicates that the rated voltage marked with the symbol is AC voltage.

DC voltage: This symbol indicates that the rated voltage marked with the symbol is DC voltage.

Caution, Consult Instructions for use: This symbol instructs the user to consult the user manual for further safety related information.

The slots and openings in the cabinet and in the back or bottom are provided for necessary ventilation. To ensure reliable operation of this apparatus and to protect it from overheating, these slots and openings must never be blocked or covered. Do not place this apparatus in a confined space, such as a bookcase or built-in cabinet, unless proper ventilation is provided. Do not place this apparatus near or over a radiator or heat register, or where it is exposed to direct sunlight. Do not place vessels (vases etc.) containing water on this apparatus, as this can result in a fire or electric shock. Do not expose this apparatus to rain or place it near water (near a bathtub, washbowl, kitchen sink, or laundry tub, in a wet basement, or near a swimming pool etc.). If this apparatus accidentally gets wet, unplug it and contact an authorised dealer immediately. This apparatus uses batteries. In your community, there might be environmental regulations that require you to dispose of these batteries properly. Please contact your local authorities for disposal or recycling information. Do not overload wall outlets, extension cords or adaptors beyond their capacity, since this can result in fire or electric shock. Power-supply cords should be placed so that they are not likely to be walked on or pinched by items placed upon or against them. Pay particular attention to cords at the plug end, at wall outlets, and at the point where they exit from the appliance. To protect this apparatus from a lightning storm, or when left unattended and unused for long periods of time, unplug it from the wall outlet and disconnect the antenna or cable system. This will prevent damage to the set due to lightning and power line surges. Before connecting the AC power cord to the DC adaptor outlet, make sure that the voltage designation of the DC adaptor corresponds to the local electrical supply. Never insert anything metallic into the open parts of this apparatus. This may cause a danger of electric shock. To avoid electric shock, never touch the inside of this apparatus. Only a qualified technician should open this apparatus. Be sure to plug in the power cord until it is firmly seated. When unplugging the power cord from a wall outlet, always pull on the power cord's plug. Never unplug it by pulling on the power cord. Do not touch the power cord with wet hands. If this apparatus does not operate normally - in particular, if there are any unusual sounds or smells coming from it - unplug it immediately and contact an authorised dealer or service centre. Be sure to pull the power plug out of the outlet if the TV is to remain unused or if you are to leave the house for an extended period of time (especially when children, elderly or disabled people will be left alone in the house). Accumulated dust can cause an electric shock, an electric leakage, or a fire by causing the power cord to generate sparks and heat or by causing the insulation to deteriorate. Be sure to contact an authorised service centre for information if you intend to install your TV in a location with heavy dust, high or low temperatures, high humidity, chemical substances, or where it will operate 24 hours a day such as in an aerial port, a train station, etc. Failure to do so may lead to serious damage to your TV. Use only a properly grounded plug and wall outlet. An improper ground may cause electric shock or equipment damage. (Class I Equipment only.) To turn off this apparatus completely, disconnect it from the wall outlet. Be sure to have the wall outlet and power plug readily accessible. Store the accessories (battery, etc.) in a location safely out of the reach of children. Do not drop or strike the product. If the product is damaged, disconnect the power cord and contact a service centre. To clean this apparatus, unplug the power cord from the wall outlet and wipe the product with a soft, dry cloth. Do not use any chemicals such as wax, benzene, alcohol, thinners, insecticides, aerial fresheners, lubricants, or detergents. These chemicals can damage the appearance of the TV or erase the printing on the product. Do not expose this apparatus to dripping or splashing. Do not dispose of batteries in a fire. Do not short-circuit, disassemble, or overheat the batteries. There is danger of an explosion if you replace the batteries used in the remote with the wrong type of battery. Replace only with the same or equivalent type. When using the AC plug that is a dedicated adapter plug provided from Samsung, pay attention to the following: Insert the AC plug into the adapter until a "click" sound is heard. Never remove the AC plug after insertion. (Cannot be removed) Do not insert only the AC plug into an outlet. Do not use the provided AC plug with other devices. Do not insert plugs other than the provided AC plug into the adapter. When removing the adapter from an outlet, pull its body vertically. Do not insert the adapter into the outlet on the ceiling. Do not drop objects or apply shock on the adapter. Do not rotate it over the range indicated on the adapter. It may cause electric shock or fire. Remove the vinyl cover of the adapter before using the adapter. Otherwise, this may result fire. To reduce the risk of fire or electric shock, do not expose this apparatus to rain or moisture. Apparatus shall not be exposed to dripping or splashing and no objects filled with liquids, such as vases, shall be placed on the apparatus. WARNING: FOR INDOOR USE ONLY.

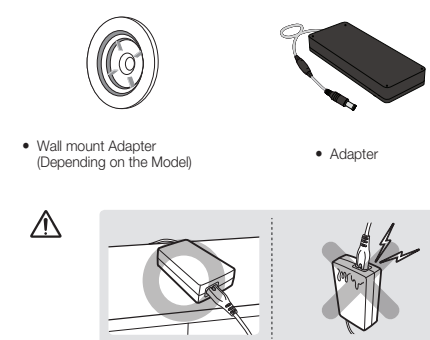
WARNING - TO PREVENT THE SPREAD OF FIRE, KEEP CANDLES OR OTHER ITEMS WITH OPEN FLAMES AWAY FROM THIS PRODUCT AT ALL TIMES.



### Getting Started

#### Accessories

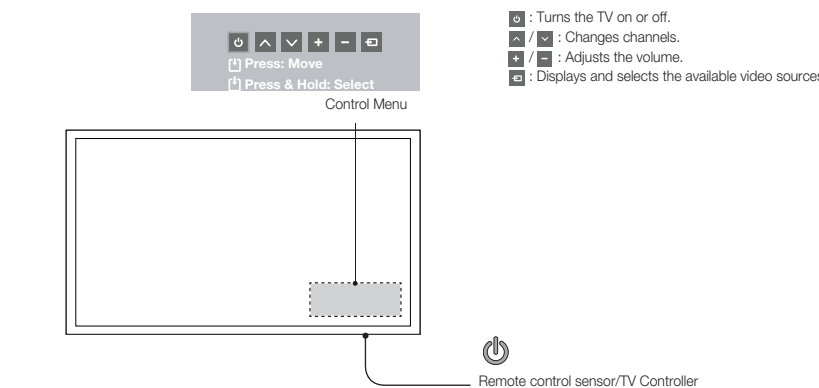
- Remote Control & Batteries (AAA x 2)
- User Manual
- Warranty Card (Not available in some locations) / Regulatory Guide
- Power Cord



#### Input Cables (Sold Separately)

- Composite (AV)
- Component
- Coaxial (RF)
- HDMI
- HDMI-DVI

#### TV Controller (Panel Key)



Turn on the TV using the **ON** button on the remote control or TV panel.

- The product colour and shape may vary depending on the model.
- The TV's Controller, a small joystick-like button at the right bottom of the TV, lets you control the TV without the remote control.
- With the TV's Controller, you cannot perform other operations except for turning the TV on or off, changing the channel, adjusting the volume, and switching the input source.

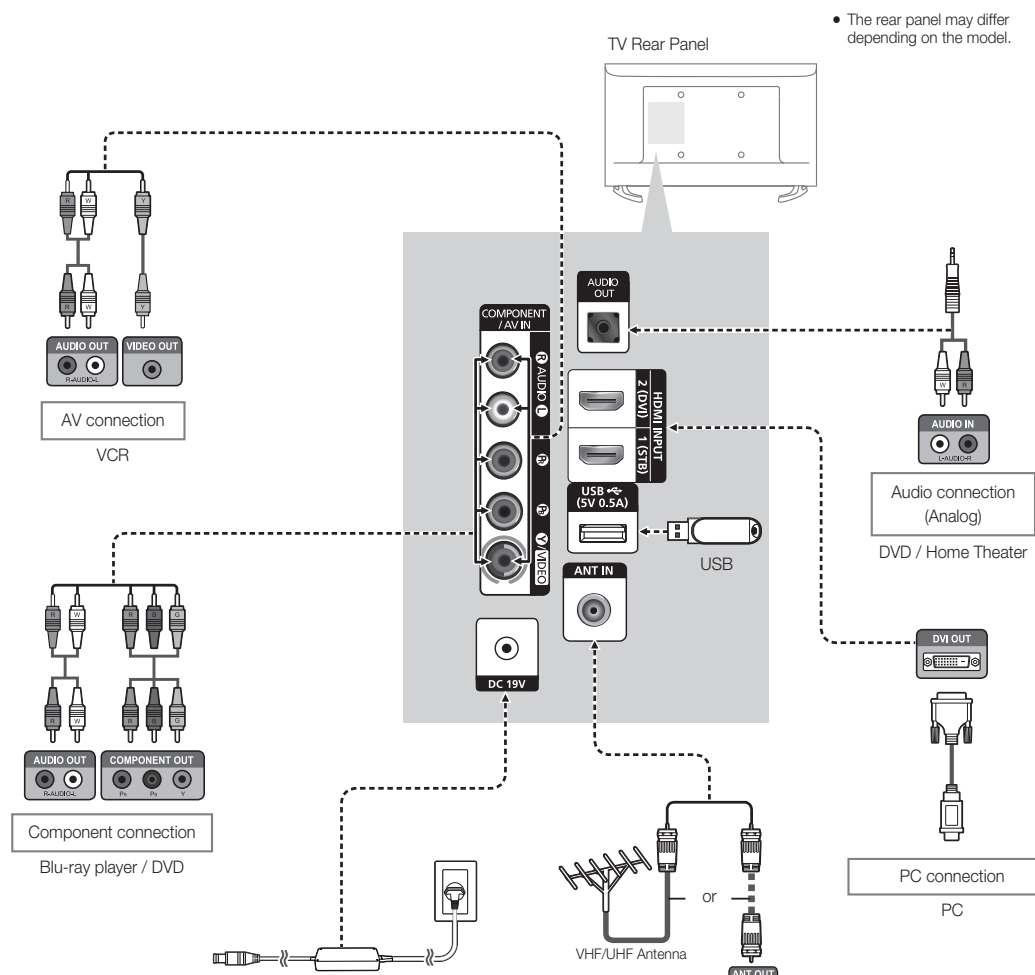
#### Plug & Play (Initial Setup)

When you turn the TV on for the first time, a sequence of screens and on-screen prompts will assist you in configuring the TV's basic settings. Plug the power cord into a wall outlet, and then press the **POWER** button to turn on the TV. Set the initial setup following instructions that the TV guides.

- If you are not using a cable box or satellite box, make you sure have connected the TV to an Aerial or cable connection before you turn on the TV.
- Connecting the power cord and antenna. (refer to "Connections")

### Connections

- For better picture and audio quality, connect to a digital device using an HDMI cable.
- The picture may not display normally if at all or the audio may not work if an external device that uses an older version of HDMI mode is connected to the TV. If such a problem occurs, ask the manufacturer of the external device about the HDMI version and, if out of date, request an upgrade.
- Be sure to purchase a certified HDMI cable. Otherwise, the picture may not display or a connection error may occur.
- PC / DVI AUDIO IN input is not supported.
- For HDMI/DVI cable connection, you must use the HDMI INPUT 2 (DVI) port.
- Connecting through the HDMI cable may not be supported depending on the PC.
- If an HDMI to DVI cable is connected to the HDMI INPUT 2 (DVI) port, the audio does not work.
- For Set-top box connection using HDMI cable, we highly recommend you to connect the HDMI INPUT 1 (STB) port.



• The rear panel may differ depending on the model.

### Changing the Input Source

#### Source List

Use to select TV or other external input sources such as DVD / Blu-ray players / cable box / STB satellite receiver connected to the TV.

1. Press the **SOURCE** button.
2. Select a desired external input receiver.

#### TV / AV / Component / HDMI1 / HDMI2/DVI

- You can only choose external devices that are connected to the TV. In the **Source List**, connected inputs will be highlighted.

### How to use Edit Name

**Edit Name** lets you associate a device name to an input source. To access **Edit Name**, enter **Support** menu and select **Edit Name**. Name the device connected to the input jacks to make your input source selection easier.

- When connecting a PC to the HDMI INPUT 2 (DVI) port with HDMI cable, you should set the TV to PC mode under **Edit Name**.
- When connecting a PC to the HDMI INPUT 2 (DVI) port with HDMI to DVI cable, you should set the TV to DVI PC mode under **Edit Name**.
- When connecting an AV devices to the HDMI INPUT 2 (DVI) port with HDMI to DVI cable, you should set the TV to DVI mode under **Edit Name**.

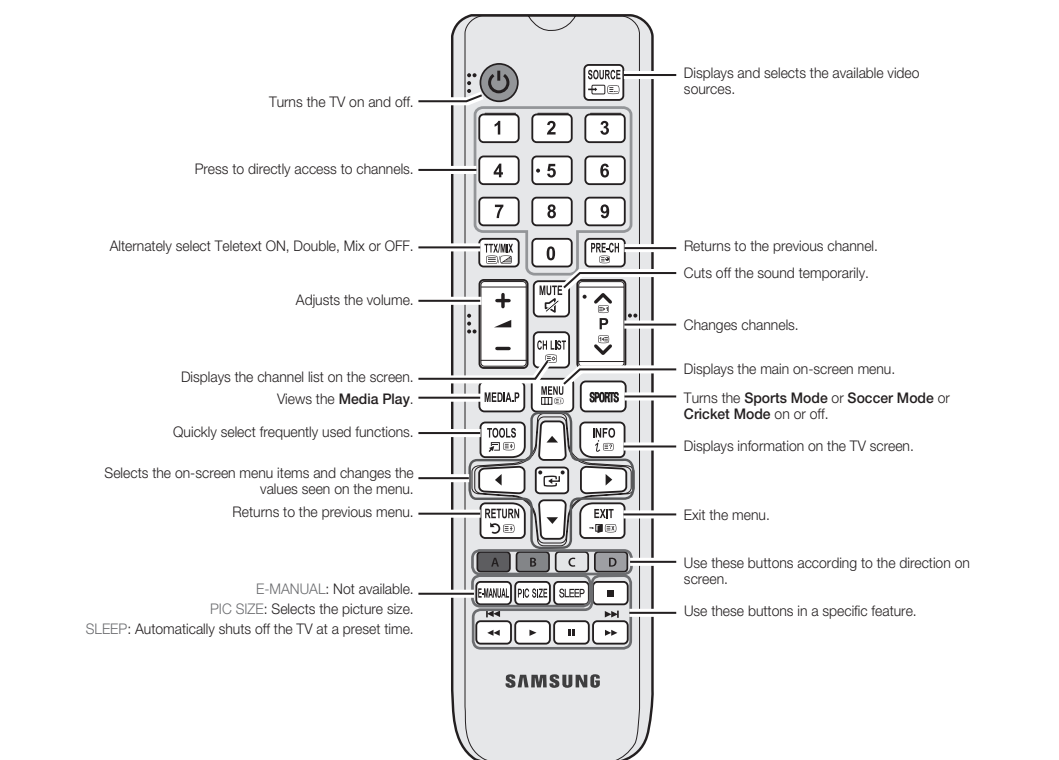
#### Information

Press **INFO** (i), you can see detailed information about the selected external device.

- Information only available for the current connected source.

### Remote Control

This remote control has Braille points on the Power, Channel, Volume and Enter buttons and can be used by visually impaired persons.



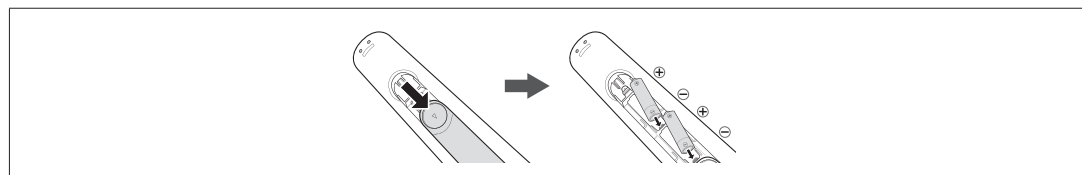
• The button names above may be different from the actual names.

### Display Modes (HDMI/DVI Input)

Optimal resolution  
4 series: 1366 x 768@60Hz

Mode	Resolution	Horizontal Frequency (kHz)	Vertical Frequency (Hz)	Pixel Clock Frequency (MHz)	Sync Polarity (H/V)	1366 x 768
MEMO	720 x 480	31.469	70.087	28.322	-/+	✓
	640 x 480	35.000	60.667	30.240	-/+	✓
	832 x 624	49.728	74.551	57.284	-/+	✓
	1152 x 870	68.681	75.082	100.000	-/+	✓
	640 x 480	31.469	59.940	25.175	-/+	✓
	640 x 480	37.861	72.809	31.500	-/+	✓
	640 x 480	37.500	75.000	31.500	-/+	✓
	800 x 600	37.879	60.317	40.000	+/+	✓
	800 x 600	48.077	70.198	50.000	-/+	✓
	800 x 600	46.875	70.000	49.500	+/+	✓
	1024 x 768	48.363	60.004	65.000	-/+	✓
	1024 x 768	56.476	70.089	75.000	-/+	✓
	1024 x 768	60.023	75.029	78.750	+/+	✓
VESA DMT	1152 x 864	67.500	75.000	108.000	+/+	✓
	1280 x 720	45.000	60.000	74.250	+/+	✓
	1280 x 800	49.702	59.810	83.500	-/+	✓
	1280 x 1024	63.981	60.020	108.000	+/+	✓
	1280 x 1024	79.976	75.025	135.000	+/+	✓
	1366 x 768	47.712	59.750	85.500	+/+	✓
	1440 x 900	55.935	59.887	106.500	-/+	✓
	1600 x 1000	60.000	60.000	108.000	+/+	✓
	1680 x 1050	65.290	59.954	146.250	-/+	✓
	1680 x 1080	67.500	60.000	148.500	+/+	✓

### Installing batteries (Battery size: AAA)



- NOTE
- Use the remote control within 7 m from TV.
- Bright light may affect the performance of the remote control. Avoid using nearby special fluorescent light or neon signs.
- The Colour and shape may vary depending on the model.

### Channel Menu

#### Seeing Channels

##### Channel List

Select a channel in the **All Channels**. **Added Channels** screen by pressing the **▲/▼** buttons, and pressing the **ENTER** button. Then you can watch the selected channel.

- Using the remote control buttons with the **Channel List**

#### Channel Status Display icons

Icons	Operations
	A channel deleted.

#### Retuning Channels

##### Area

You can change the desired area.

##### Auto Store

(Depending on the country)  
Scans for a channel automatically and stores in the TV.

##### Manual Store

Scans for a channel manually and stores in the TV.

- According to channel source, **Manual Store** may be supported.
- **Programme, Colour System, Sound System, Channel, Search, Store**: If there is abnormal sound or no sound, reselect the sound standard required.

#### Channel List Option Menu

Set each channel using the **Channel List** menu options (**Add / Delete**). Option menu items may differ depending on the channel status.

- **Add / Delete**: Delete or add a channel to display the channels you want.
- All deleted channels will be shown on the **All Channels** menu.
- A "X" beside the channel indicates the channel has been deleted.
- The **Add** menu only appears for deleted channels.

#### Fine Tune

If the reception is clear, you do not have to fine tune the channel, as this is done automatically during the search and store operation. If the signal is weak or distorted, fine tune the channel manually.

- Fine tuned channels that have been saved are marked with an asterisk "\*" on the right-hand side of the channel number in the channel banner.
- This is available for analogue broadcasts only.

### Picture Menu

#### Picture Mode **TOOLS**

Select your preferred picture type.

- **Dynamic**: Suitable for a bright room.
- **Standard**: Suitable for a normal environment.
- **Movie**: Suitable for watching movies in a dark room.

#### Backlight / Contrast / Brightness / Sharpness / Colour / Tint (G/R)

Your television has several setting options for picture quality control.

- In analogue **TV**, AV modes of the PAL system, the **Tint (G/R)** function is not available.
- When connecting a PC, you can only make changes to **Backlight, Contrast, Brightness and Sharpness**.
- Settings can be adjusted and stored for each external device connected to the TV.
- Lowering picture brightness reduces power consumption.

#### Picture Options

- **Colour Tone**: Select the colour temperature.
- **Warm** will be deactivated when the picture mode is **Dynamic**.
- **Size**: Your cable box/satellite receiver may have its own set of screen sizes as well. However, we highly recommend you use **16:9** mode most of the time.
- **16:9**: Sets the picture to 16:9 wide mode.
- **4:3**: Sets the picture to basic 4:3 mode.
- **Zoom1/Zoom2**: Zoom out 16:9 wide mode vertically to fit the screen size.
- **Screen Fit**: Displays the full image without any cut-off when HDMI/720p/1080/1080p signals are inputted.
- **Custom**: Magnifies or shrinks 16:9 pictures vertically and/or horizontally. A magnified or shrunk picture can be moved left, right, up, and down.
- Do not watch in 4:3 format for a long time. Traces of borders displayed on the left, right and centre of the screen may cause image retention (screen burn) which are not covered by the warranty.

- NOTE
- Depending on the input source, the picture size options may vary.
- The available items may differ depending on the selected mode.
- Settings can be adjusted and stored for each external device connected to an input on the TV.
- **Digital Clean View: (Auto / Off / Low / Medium / High)** If the broadcast signal received by your TV is weak, you can activate the **Digital Clean View** feature to reduce any static and ghosting that may appear on the screen.
- When the signal is weak, try other options until the best picture is displayed.
- **HDMI Black Level**: Selects the black level on the screen to adjust the screen depth.
- Available only in **HDMI** mode (RGB signals).
- **Film Mode: (Auto / Off)** Sets the TV to automatically sense and process film signals from all sources and adjust the picture for optimum quality.
- Available in TV mode, AV, COMPONENT (480i / 1080i) and HDMI (480i / 1080i).
- **Motion Lighting**: Reduce power consumption by brightness control adapted motion.
- Only available in **Standard** mode.

#### Picture Reset

Resets your current picture mode to its default settings.

### Sound Menu

#### Sound Mode **TOOLS**

- **Standard**: Selects the normal sound mode.
- **Music**: Emphasise music over voices.
- **Movie**: Provides the best sound for movies.
- **Clear Voice**: Emphasise voices over other sounds.

#### Equalizer

- (standard sound mode only)
- **Balance**: Adjusts the balance between the right and left speaker.
- **100Hz / 300Hz / 1kHz / 3kHz / 10kHz (Bandwidth Adjustment)**: Adjusts the level of specific bandwidth frequencies.
- **Reset**: Resets the **Equalizer** to its default settings.

#### DTS TruSurround HD **TOOLS**

(standard sound mode only)  
This function provides a virtual 5.1 channel surround sound experience through a pair of speakers using HRTF (Head Related Transfer Function) technology.

#### Auto Volume

Because each broadcasting station has its own signal conditions, the volume may fluctuate each time channel is changed. This feature lets you automatically adjust the volume of the desired channel by lowering the sound output when the modulation signal is high or by raising the sound output when the modulation signal is low.

#### Speaker Select

A sound echo may occur due to a difference in decoding speed between the main speaker and the audio receiver. In this case, set the TV to **External Speaker**.

- When you set **Speaker Select** to **External Speaker**, the TV's speakers are turned off. You will hear sound through the external speakers only. When you set **Speaker Select** to **TV Speaker**, both the TV's speakers and the external speakers are on. You will hear sound through both.
- When **Speaker Select** is set to **External Speaker**, the volume and MUTE buttons will not operate and the sound settings will be limited.
- If there is no video signal, both speakers will be mute.

#### TV Installation Type

This is the feature that set sound filter to fit into the installation condition of TV. Adjust TV Sound to suit either stand or Wall Mount Installation.

#### Sound Reset

Reset all sound settings to the factory defaults.

#### Selecting the Sound Mode **TOOLS**

When you set to **Dual I-Dual II**, the current sound mode is displayed on the screen.

	Audio Type	Dual I-II	Default
	Mono	Mono	Automatic change
	Stereo	Stereo ↔ Mono	Automatic change
	Dual	Dual I ↔ Dual II	Dual I
	Mono	Mono	Automatic change
	Stereo	Mono ↔ Stereo	Automatic change
	Dual	Dual I ↔ Dual II	Dual I

- If the stereo signal is weak and an automatic switching, occurs, then switch to the mono.
- Only activated in stereo sound signal.
- This function is available for all input sources.



Support Menu

Using the Media Play

Enjoy photos, music and/or movie files saved on a USB Mass Storage Class (MSC) device.

Connecting a USB Device

- Turn on your TV.
- Connect a USB device containing photo, music and/or movie files to the **USB** jack on the side of the TV.
- When USB is connected to the TV, you can select **Media Play**.

The maximum displayed number of partition is 4.

Using the Media Play (USB) Menu

- Press the MENU button. Press the **▲** or **▼** button to select **Support**, then press the ENTER button.
- Press the **▲** or **▼** button to select **Media Play (USB)**, then press the ENTER button.
- Press the **◀** or **▶** button to select an icon (**Videos**, **Music**, **Photos**), then press the ENTER button.

It might not work properly with unlicensed multimedia files.

If you want to view detailed information of the file being played, press TOOLS button in the file list, and then select **Information**.

Need-to-Know List before using **Media Play (USB)**

- Supported file systems are FAT and NTFS.
- Certain types of USB Digital camera and audio devices may not be compatible with this TV.

- Media Play** only supports USB Mass Storage Class (MSC) devices. MSC is a Mass Storage Class Bulk-Only Transport device. Examples of MSC are Thumb drives and Flash Card Readers. Devices should be connected directly to the TV's USB port. Does not support smart devices connected in MTP or PTP protocol.

- Before connecting your device to the TV, please back up your files to prevent them from damage or loss of data. SAMSUNG is not responsible for any data file damage or data loss.

- A USB device that requires high power may not be supported.
- Do not disconnect the USB device while it is loading.

- The higher the resolution of the image, the longer it takes to display on the screen.

- The maximum supported JPEG resolution is 15360 x 8640 pixels.
- If a file is corrupted or the TV does not support the file type, the "Not Supported File Format" message appears.

- If a USB extension cable is used, the USB device may not be recognised or the files on the device may not be read.

- The TV cannot play MP3 files with DRM that have been downloaded from a for-pay site. Digital Rights Management (DRM) is a technology that supports the creation, distribution, and management of digital content in an integrated and comprehensive way, including protecting the rights and interests of content providers, preventing illegal copying of contents, and managing billings and settlements.

- PTP device is not supported.
- If an over-power warning message is displayed while you are connecting or using a USB device, the device may not be recognised or may malfunction.
- The power-saving mode of some external hard disk drives may be released automatically when you connect them to the TV.
- If a USB device connected to the TV is not recognised, the list of files on the device is corrupted, or a file in the list is not played, connect the USB device to a PC, format the device, and check the connection.
- If a file you deleted from the PC is still found when you run **Media Play**, use the "Empty the Recycle Bin" function on the PC to permanently delete the file.
- Photos** only supports sequential jpeg format.
- The scene search and thumbnail functions are not supported in the **Videos**.
- If the number of files and folders saved on a USB storage device is approximately over 4000, the files and folders may not appear and some folders may not be opened.
- The maximum displayed number of files, including sub folders, in one folder of USB storage device is 1000.
- The media may not be playing smoothly when using the device higher than USB 2.0.

The maximum displayed number of partition is 4.

The file name only works in supported menu language. The other language is not displayed properly.

Videos

- Press the **◀** or **▶** button to select **Videos**, then press the ENTER button in the **Media Play** menu.
- Press the **◀/▶/▲/▼** buttons to select the desired video in the file list.
- Press the ENTER button or **[▶]** (Play) button.

- The selected file is displayed on the top with its playing time.
- If video time information is unknown, playing time and the progress bar are not displayed.

During video playback, you can search using the **◀** and **▶** button.

You can use **[REW]** (REW) and **[FF]** (FF) buttons during playback.

In this mode, you can play movie clips contained in a game, but you cannot play the game itself.

Supported Subtitle Formats

External

Name	File extension
MPEG-4 timed text	.txt
SAMI	.smi
Subrip	.srt
Subviewer	.sub
Micro DVD	.sub or .txt
SubStation Alpha	.ssa
Advanced SubStation Alpha	.ass

Internal

Name	Container	Format
Xsub	AVI	Picture Format
SubStation Alpha	MKV	Text Format
Advanced SubStation Alpha	MKV	Text Format
Subrip	MKV	Text Format
MPEG-4 Timed text	MP4	Text Format

Supported Video Formats

File Extension	Container	Video Codec	Resolution	Frame rate/field	Bitrate/Mbps	Audio Codec
*.mp4	MP4	DxV 3.11x 12.5x8.0	1024x1080	6-30	20Mbps	MP3 / AC3 / AAC
		H.264	1024x1080	6-30	20Mbps	
		VC-1	1024x1080	6-30	20Mbps	
		MPEG	1024x1080	6-30	10Mbps	
*.avi	AVI	DxV 3.11x 12.5x8.0	1024x1080	6-30	20Mbps	LPCM / AC3 / DTS
		MPEG 128x	1024x1080	6-30	20Mbps	
		H.264	1024x1080	6-30	20Mbps	
		MPEG	1024x1080	6-30	10Mbps	
*.asf	ASF	DxV 3.11x 12.5x8.0	1024x1080	6-30	20Mbps	MP3 / AC3 / LPCM / AAC / WMA Pro
		MPEG 128x	1024x1080	6-30	20Mbps	
		H.264	1024x1080	6-30	20Mbps	
		MPEG	1024x1080	6-30	20Mbps	
*.ts	TS	MPEG2-TS	1024x1080	6-30	20Mbps	AC3 / AAC / MP3 / DTS
		H.264	1024x1080	6-30	20Mbps	
		MPEG1	1024x1080	6-30	20Mbps	
		MPEG2	1024x1080	6-30	20Mbps	
*.m2v	PS	MPEG1	1024x1080	6-30	20Mbps	AC3 / MPEG / LPCM / AAC
		MPEG2	1024x1080	6-30	20Mbps	
		H.264	1024x1080	6-30	20Mbps	
		MPEG 128x	1024x1080	6-30	20Mbps	
*.3gp	3GPP	MPEG 128x	1024x1080	6-30	20Mbps	MP3
		H.264	1024x1080	6-30	20Mbps	
*.h26	h26	H.264	1024x1080	6-30	20Mbps	MP3
		Sorenson H.263	1024x1080	6-30	20Mbps	

Other Restrictions

- Video content will not play, or not play correctly, if there is an error in the content or the container.
- Sound or video may not work if the contents have a standard bit rate/ frame rate above the compatible Frame/sec listed in the table above.
- If the Index Table is in error, the Seek (Jump) function is not supported.
- The menu may take longer to appear if the video's bit rate exceeds 10Mbps.
- Video content can not be played, if there are many contents in one file.

Video Decoder

Supports up to H.264, Level 4.1  
H.264 RMO / ASO / RS, VC1 SP / MP / AP L4 and AVCHD are not supported.  
MPEG4 SP, ASP :  
- **Below 1280 x 720**: 60 frame max  
- **Above 1280 x 720**: 30 frame max  
H.263 is not supported.  
GMC is not supported.

Audio Decoder

Supports up to WMA7, 8, 9 STD, 9 PRO, 10 PRO  
WMA 9 PRO and WMA 10 PRO support 5.1 channel. (LBR mode of WMA Pro is not supported)  
WMA Lossless is not supported.

Music

- Press the **◀** or **▶** button to select **Music**, then press the ENTER button in the **Media Play** menu.
  - Press the **◀/▶/▲/▼** buttons to select the desired Music in the file list.
  - Press the ENTER button or **[▶]** (Play) button.
- During music playback, you can search using the **◀** and **▶** button.
- [REW]** and **[FF]** buttons do not function during play.
- Only displays the files with MP3 file extension. Other file extensions are not displayed, even if they are saved on the same USB device.

If the need to change **Equalizer** - when playing MP3, then ext **Media Play**, adjust the **Equalizer** in the **Sound** menu. (An over-modulated MP3 file may cause a sound problem.)

Photos

- Press the **◀** or **▶** button to select **Photos**, then press the ENTER button in the **Media Play** menu.
  - Press the **◀/▶/▲/▼** buttons to select the desired photo in the file list.
  - Press the ENTER button or **[▶]** (Play) button.
- NOTE**
- While a photo list is displayed, press the **[▶]** (Play) / ENTER button on the remote control to start the slide show.
  - All files in the file list section will be displayed in the slide show.
  - During the slide show, files are displayed in order.
  - During the slide show, you can adjust the slide show speed using **[REW]** (REW) or **[FF]** (FF) button.

You can move to other file using **◀** or **▶** button.

Press TOOLS button and select **Background Music**. Music files can be automatically played during the Slide Show if the **Background Music** is set to **On**.

The **Mode** in **Background Music** cannot be changed until the BGM has finished loading.

Supported Photo Formats

Image	Photo	Resolution
JPEG	Base-line	15360 x 8704
	Progressive	1024 x 768

Other Restrictions

CMYK, YCKC Colour space JPEG are not supported.

Playing Multiple Files

Playing selected video/music/photo files

- Press the Yellow button in the file list to select the desired file.
- Repeat the above operation to select multiple files.

NOTE

- The **✓** mark appears to the left of the selected files.
- To cancel a selection, press the Yellow button again.
- To deselect all selected files, press the TOOLS button and select **Deselect All**.

Media Play - Additional Functions

Videos/Music/Photos Play Option menus

When playing a file, press the TOOLS button.

Category	Operation	Videos	Music	Photos
Title	You can move the other file directly.	✓	✓	
Repeat Mode	You can play movie and music files repeatedly.	✓	✓	
Picture Size	You can adjust the picture size to your preference.	✓		
Picture Mode	You can adjust the picture setting.	✓	✓	✓
Sound Mode	You can adjust the sound setting.	✓	✓	
Subtitle Settings	You can play the video with Subtitles. This function only works if the subtitles are the same file name as the video.	✓		
Audio language	You can change the audio language if the video has more than one language.	✓		
Stop Slide Show / Start Slide Show	You can start or stop a Slide Show.			✓
Slide Show Speed	You can select the slide show speed during the slide show.			✓
Background Music	You can set and select background music when watching a Slide Show.		✓	
Zoom	You can zoom into images in full screen mode.		✓	✓
Rotate	You can rotate images in full screen mode.		✓	✓
Information	You can see detailed information about the played file.	✓	✓	✓

Using the Sports Mode(or Cricket Mode)

Sports Mode [TOOLS▶]

Depending on the country.

This mode provides optimised condition for watching sports games.

**Zoom**: Pause playback and divided the picture into 9 parts. Select a part to zoom it in. Press this button again to resume.

When **Sports Mode** is **On**, the picture and sound modes are set to **Stadium** automatically.

If you turn the TV off while watching **Soccer Mode**, the **Sports Mode** will be disabled.

Mode name may vary depending on nations. **Cricket Mode**, **Sports Mode**.

Cricket Game

Depending on the country.

Add fun to the live game predict result for each ball of over.

**Predict Start**: In the game of predict the user predicts the outcome of the next ball or the next over and earns consecutive points. Predict is made essentially for the 2 most popular formats of the game i.e. One day (50 Overs) and T20 (20 overs). (Depending on the country and model.)

Software Upgrade

**Software Upgrade** can be performed by downloading the latest firmware from "www.samsung.com" to a USB memory device.

Changing the Use Mode

Select the **Use Mode** suitable for your place. We strongly recommend you select **Home Use**.

- Home Use**: Home Use is the default setting.
- Store Demo**: **Store Demo** is for retail environments only. If you select **Store Demo**, some functions will not work, and the picture settings will be reset every 5 minutes.

DiViX® Video On Demand

Shows the registration code authorised for the TV. If you connect to the DiVx web site and register with 10-digit registration code, you can download the VOD activation file. Once you play it using **Media Play**, the registration is completed.

For more information on DiVx® VOD, visit <http://vod.divx.com>.

HD Connection Guide

You can read a guide to connect external devices for HD sources.

Contact Samsung

View this information when your TV does not work properly or when you want to upgrade the software. You can find information regarding our call centres, and how to download products and software.

Other Information

Installing the Wall Mount

The wall mount kit (sold separately) allows you to mount the TV on the wall. For detailed information on installing the wall mount, see the instructions provided with the wall mount. Contact a technician for assistance when installing the wall mount bracket. We do not advise you to do it yourself.

Samsung Electronics is not responsible for any damage to the product or injury to yourself or others if you select to install the TV on your own.



Before installing any other wall mounting kit, assemble the wall mount adapter provided separately with the TV.

Wall Mount Kit Specifications (VESA)

The wall mount kit is not supplied, but sold separately.

Install your wall mount on a solid wall perpendicular to the floor. When attaching to other building materials, please contact your nearest dealer. If you install the TV on a ceiling or slanted wall, it may fall and result in severe personal injury.

NOTE

- Standard dimensions for wall mount kits are shown in the table below.
- When purchasing our wall mount kit, a detailed installation manual and all parts necessary for assembly are provided.
- For wall mounts that do not comply with the VESA standard screw specifications, the length of the screws may differ depending on the wall mount specifications.
- Do not use screws longer than the standard dimension, as they may cause damage to the inside of the TV set.
- For wall mounts that do not comply with the VESA standard screw specifications, the length of the screws may differ depending on the wall mount specifications.
- Do not fasten the screws too firmly. This may damage the product or cause the product to fall, leading to personal injury. Samsung is not liable for these kinds of accidents.
- Samsung is not liable for product damage or personal injury when a non-VESA or non-specified wall mount is used or the consumer fails to follow the product installation instructions.
- Do not mount the TV at more than a 15 degree tilt.
- Always have two people mount the TV on a wall.

Product Family	Models	VESA screw hole specs [A" B] in millimeters	Standard Screw	Quantity
LED-TV	UA32K4000	200 x 200	M8	4



Securing the TV to the Wall

**Caution**: Pulling, pushing, or climbing onto the TV may cause the TV to fall. In particular, ensure that your children do not hang over or destabilize the TV; doing so may cause the TV to tip over, resulting in serious injuries or death. Follow all safety precautions provided on the included Safety Flyer. For added stability, install the anti-fall device for safety purposes, as follows.

To prevent the TV from falling

- Since the necessary clamps, screws, and string are not supplied, please purchase these additionally.
- Put the screws into the clamps and firmly fasten them onto the wall. Confirm that the screws have been firmly installed onto the wall.
- You may need additional material such as an anchor depending on the type of wall.

- Since the necessary clamps, screws, and string are not supplied, please purchase these additionally.
- Remove the screws from the back Centre of the TV, put the screws into the clamps, and then fasten the screws onto the TV again.
- Screws may not be supplied with the product. In this case, please purchase the screws of the following specifications.

- Connect the clamps fixed onto the TV and the clamps fixed onto the wall with a strong cable and then tie the string tightly.

NOTE

- Install the TV near to the wall so that it does not fall backwards.
- It is safe to connect the string so that the clamps fixed on the wall are equal to or lower than the clamps fixed on the TV.
- Untie the string before moving the TV.
- Verify all connections are properly secured. Periodically check connections for any sign of fatigue for failure. If you have any doubt about the security of your connections, contact a professional installer.

Kensington Lock

The Kensington Lock is not supplied by Samsung. It is a device used to physically fix the system when using it in a public place. Refer to the manual provided with the Kensington Lock for additional information on proper use.

Please find a "K" icon on the rear of the TV. The Kensington slot is beside the "K" icon.

The position and colour may differ depending on the model.

To lock the product, follow these steps:

- Wrap the Kensington lock cable around a large, stationary object such as desk or chair.
- Slide the end of the cable with the lock attached through the looped end of the Kensington lock cable.
- Insert the locking device into the Kensington slot on the product.
- Lock the lock.

These are general instructions. For exact instructions, see the User manual supplied with the locking device.

The locking device has to be purchased separately.

The location of the Kensington slot may be different depending on the TV model.

Troubleshooting

If you have any questions about the TV, first refer to this list. If none of these troubleshooting tips apply, please visit "www.samsung.com," then click on Support, or contact the call centre listed on the back-cover of this manual.

Problem	Possible Solution
Picture Quality	
The TV image does not look as good as it did in the store.	<ul style="list-style-type: none"><li>If you have an analogue cable/set top box, upgrade to a digital set top box. Use HDMI or Component cables to deliver HD (high definition) picture quality.</li><li>Antenna connection: Try HD stations after performing Auto tuning.</li><li>Many HD channels are up scaled from SD(Standard Definition) contents.</li><li>Adjust the Cable/Set top box video output resolution to 1080 or 720p.</li><li>Make sure you are watching the TV at the minimum recommended distance based on the size and definition of the signal.</li></ul>
The picture is distorted: macroblock error, small block, dots, pixelization	<ul style="list-style-type: none"><li>Compression of video contents may cause picture distortion especially in fast moving pictures such as sports and action movies.</li><li>Low signal level or bad quality can cause picture distortion. This is not a TV issue.</li><li>Mobile phones used close to the TV (cca up to 1m) may cause noise in picture on analogue and digital TV.</li></ul>
Colour is wrong or missing.	<ul style="list-style-type: none"><li>If you're using a component connection, make sure the component cables are connected to the correct jacks. Incorrect or loose connections may cause colour problems or a blank screen.</li></ul>
There is poor colour or brightness.	<ul style="list-style-type: none"><li>Adjust the <b>Picture</b> options in the TV menu. Go to <b>Picture Mode / Colour / Brightness / Sharpness</b>.</li><li>Try resetting the picture to view the default picture settings. Go to MENU - <b>Picture</b> - <b>Picture Reset</b></li></ul>
There is a dotted line on the edge of the screen.	<ul style="list-style-type: none"><li>If the picture size is set to <b>Picture Options</b>, change it to <b>16:9</b>.</li><li>Change cable/satellite box resolution.</li></ul>
The picture is black and white.	<ul style="list-style-type: none"><li>If you are using an AV composite input, connect the video cable (yellow) to the Green jack of component input 1 on the TV.</li></ul>
When changing channels, the picture freezes or is distorted or delayed.	<ul style="list-style-type: none"><li>If connected with a cable box, please try to reset the cable box. Reconnect the AC cord and wait until the cable box remote control does not work below.</li><li>Set the output resolution of the cable box to 1080i or 720p.</li></ul>
Sound Quality	
There is no sound or the sound is too low at maximum volume.	<ul style="list-style-type: none"><li>Please check the volume of external device connected to your TV.</li></ul>
The picture is good but there is no sound.	<ul style="list-style-type: none"><li>Set the <b>Speaker Select</b> option to <b>TV Speaker</b> in the sound menu.</li><li>If you are using an external device, make sure the audio cables are connected to the correct audio input jacks on the TV.</li><li>If you are using an external device, check the device's audio output option (ex. you may need to change your cable box's audio option to HDMI when you have a HDMI connected to your TV).</li><li>If you are using a HDMI cable, a separate audio cable is required.</li><li>If your TV has a headphone jack, make sure there is nothing plugged into it.</li></ul>
The speakers are making an inappropriate noise.	<ul style="list-style-type: none"><li>Check the cable connections. Make sure a video cable is not connected to an audio input.</li><li>For antenna or cable connections, check the signal strength. Low signal level may cause sound distortion.</li></ul>
No Picture, No Video	
The TV will not turn on.	<ul style="list-style-type: none"><li>Make sure the AC power cord is securely plugged in to the wall outlet and the TV.</li><li>Make sure the wall outlet is working.</li><li>Try pressing the <b>POWER</b> button on the TV to make sure the problem is not the remote. If the TV turns on, refer to "The remote control does not work" below.</li></ul>
The TV turns off automatically.	<ul style="list-style-type: none"><li>Ensure the <b>Sleep Timer</b> is set to <b>Off</b> in the <b>Time</b> menu.</li><li>If your PC is connected to the TV, check your PC power settings.</li><li>Make sure the AC power cord is plugged in securely to the wall outlet and the TV.</li><li>When watching TV from an antenna or cable connection, the TV will turn off after 10 ~ 15 minutes if there is no signal.</li></ul>
There is no picture/video.	<ul style="list-style-type: none"><li>Check cable connections (remove and reconnect all cables connected to the TV and external devices).</li><li>Set your external devices' (Cable/Set top Box, DVD, Blu-ray etc) video outputs to match the connections to the TV input. For example, if an external device's output is HDMI, it should be connected to an HDMI input on the TV.</li><li>Make sure your connected devices are powered on.</li><li>Be sure to select the TV's correct source by pressing the <b>SOURCE</b> button on the TV remote.</li></ul>

Problem	Possible Solution
RF(Cable/Antenna) Connection	
The TV is not receiving all channels.	<ul style="list-style-type: none"><li>Make sure the Antenna cable is connected securely.</li><li>Please try <b>Setup</b> (Plug &amp; Play) to add available channels to the channel list. Go to MENU - <b>System</b> - <b>Setup</b> (Plug &amp; Play) and wait for all available channels to be stored.</li><li>Verify the Antenna is positioned correctly.</li></ul>
The picture is distorted: macroblock error, small block, dots, pixelization	<ul style="list-style-type: none"><li>Compression of video contents may cause picture distortion, especially on fast moving pictures such as sports and action movies.</li><li>A low signal can cause picture distortion. This is not a TV issue.</li></ul>