





Features of SMART Air conditioner Network

Convenient control with Smart A/C application of a smart phone!

You can conveniently control your air conditioner anywhere with Smart A/C application.



This product is the Smart Air conditioner which supports Samsung Smart Home Service.
Detailed information can be checked at Samsung.com.

Contents

Preparation

Installing network	3
Checking before using a wireless router	3
Connecting network	3
Connecting the wireless IP router with an air conditioner	3
Checking Wi-Fi module installation	4
Disassembling the Wi-Fi module	4
Assembling the Wi-Fi module	5
Checking the connection status on the panel-display	5
Starting Samsung Smart Home App	6
Registering Samsung account	6
Downloading Samsung Smart Home App	6
Registering the product	6

Basic function

Using Samsung Smart Home App	8
Downloading Samsung Smart Air conditioner App	8
Description of screens and main functions	9
Control screen	10
Controlling the air conditioner	11
Setting the air conditioner	12

Others

Troubleshooting	14
Open Source Announcement	15
Reference	16

This product has been determined to be in compliance with the R&TTE Directive (1999/5/EC), the Low Voltage Directive (2006/95/EC) and the Electromagnetic Compatibility Directive (2004/108/EC) of the European Union.



- i. RF exposure warning statement – for keeping 20cm distance when installing this module.
- ii. Warning that this module should not be installed and operating simultaneously with other radio without additional evaluation or FCC filing.
- iii. instruction for host system labeling, the host system should have proper label showing that it "Contains FCC ID : A3LSWL-B70F"
- iv. Your device uses non-harmonised frequency and is intended for use in all European countries. The WLAN can be operated in the EU without restriction indoors, but cannot be operated outdoors in France.

English-2





Installing network

[Connecting Network]

Connect the wireless IP router to an air conditioner.



[Registering service]

Access the <http://www.samsungsmartappliance.com> and register the service.

Checking before using a wireless router

* This Wi-Fi Aircon support only below encryption.

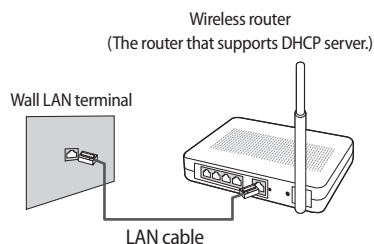
- Open (No encryption), WPA/TKIP, WPA2/AES
- You may not be able to establish Wi-Fi connection if other type of encryption is used.

- ▶ For Wi-Fi Aircon installation, select indoor unit location near to wireless router. In case Wi-Fi signal strength is weakened, Smart App. may be disconnected depending on the Wi-Fi signal strength.
- ▶ Smart-Phone should be in the Wi-Fi signal zone to use Smart App.
- ▶ For Mobile broadband internet access, Smart App. can be used when Mobile Broadband Dongle is activated to use Wi-Fi.
- ▶ This product supports only DHCP(Dynamic Host Configuration Protocol). If users use an existing wireless router, the DHCP server option function should be activated.
- ▶ Select a channel for the wireless router that is not currently being used.
- ▶ If a wireless router is connected by other than the above modes, the router may not be connected with the air conditioner or may not work. To use 802.11n, using WPA2/AES is recommended.
- ▶ The quality of wireless network connection can be affected by the surrounding wireless environment.
- ▶ If an internet service provider has permanently registered the users PC or MAC address (a unique identifying number), the air conditioner might not be connected to internet. When appliances other than a PC are to be connected to Internet, ask your ISP (Internet service provider) about the procedures required to connect to the internet.
- ▶ If your internet service provider requires an ID or a password to connect to the internet, your air conditioner may not be able to connect to the internet. If this is the case, you must enter your ID or password when connecting to the internet.
- ▶ The internet connection may fail because of a firewall problem. If this is the case, contact your internet service provider.
- ▶ If you cannot connect to the internet even after you have followed the procedures of your internet service provider, please contact a samsung service center.

Connecting network

Connecting the wireless IP router with an air conditioner

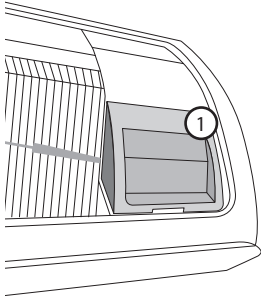
- ▶ For wireless router installation, refer to the user manual of the corresponding router.
- ▶ Samsung smart air conditioner supports the communication protocols of IEEE802.11 b/g/n(2.4Ghz).
- ▶ For wireless router installation, refer to the user manual of each manufacturing company.
Samsung does not provide customers with the wireless router manual.
- ▶ Uncertified router may not be able to connect with an air conditioner.
- ▶ Certified router has the logo of below on the package or user manual.





Connecting network

Checking Wi-Fi module installation

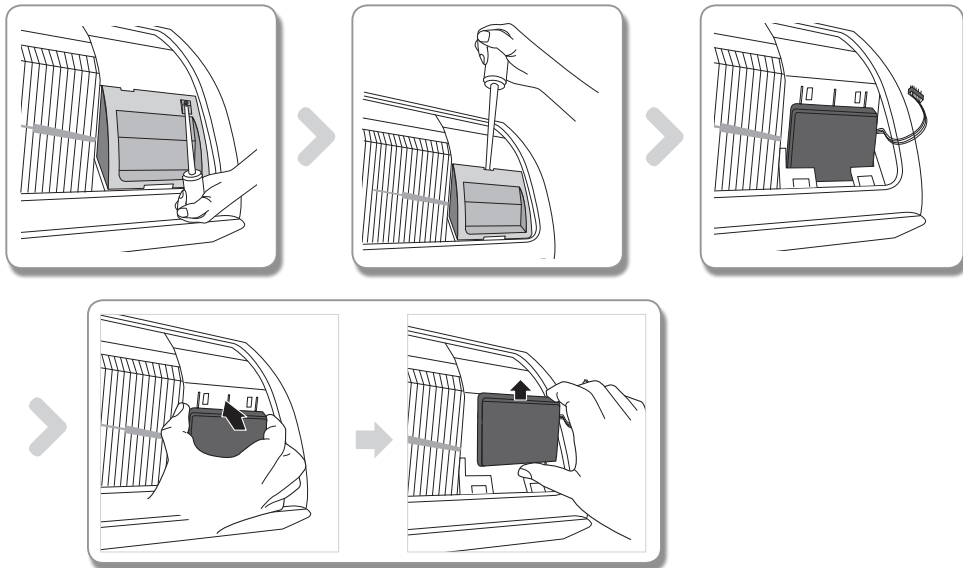


- ▶ Open the filter cover and check the Wi-Fi Module (①) attached on the panel front. The connection status between the Wi-Fi module and the wireless router can be checked by the Wi-Fi module described next page.
- ▶ To replace the Wi-Fi module(Assembling or disassembling), follow the procedure below.



- When changing the Wi-Fi module, you should check the MAC attached on the module or bottom part of the indoor unit and modify the device information at 'Registering service'.

Disassembling the Wi-Fi module

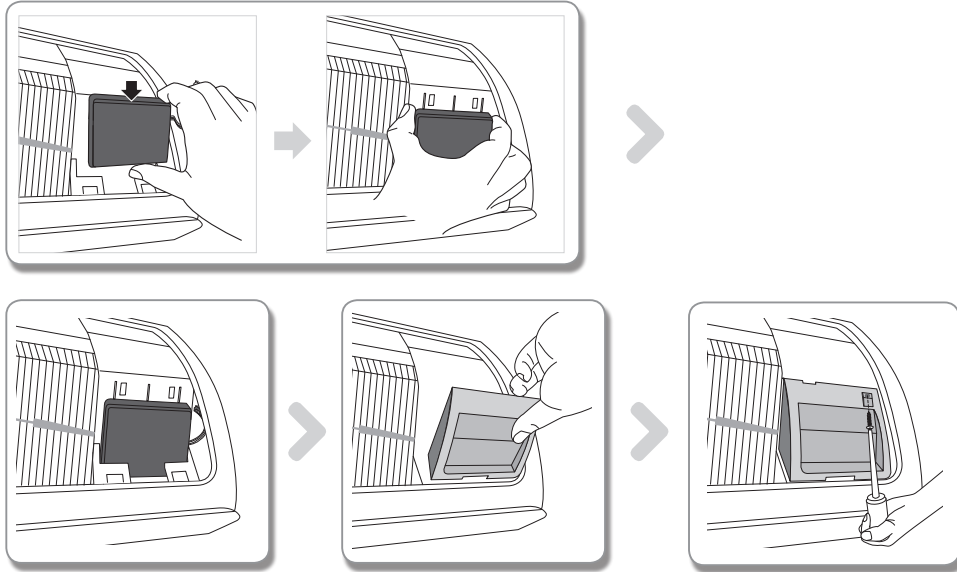


1. Remove the cover of the sub panel.
2. Disconnect the wire of the Wi-Fi module.
3. Release the hook on the top of the Wi-Fi module and push it up to disassemble it.





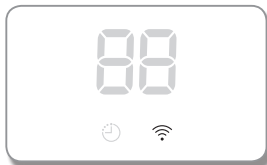
Assembling the Wi-Fi module



01 PREPARATION

1. Push the Wi-Fi module down into a slot and fix the hook on the top.
2. Connect the wire of the Wi-Fi module.
3. Close the cover of the sub panel.

Checking the connection status on the panel-display



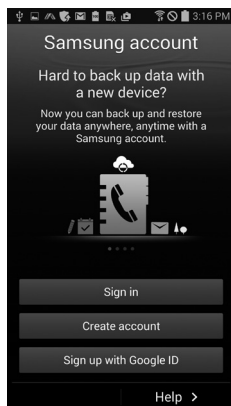
- Wi-Fi display description
- 1) Wi-Fi Indicator LED off :
Not connected with AP
Not connected with internet
- 2) Wi-Fi Indicator LED blinking :
Connected with AP
Not connected with internet
- 3) Wi-Fi Indicator LED on :
Connected with AP
Connected with internet

English-5

Starting Samsung Smart Home App

Registering Samsung account

- Before using the Samsung Smart Home App, register the Samsung account.



- If you run the Samsung Smart Home App but the auto login is not set, the Samsung account screen appears only one time in the initial process. If you are a Samsung smart phone user and already registered on the Samsung account in the settings of your smart phone, you can automatically logon to the Samsung Smart Home App.
- However, iPhone users need to perform login process each time they use the App since their login information is not automatically set.

Downloading Samsung Smart Home App

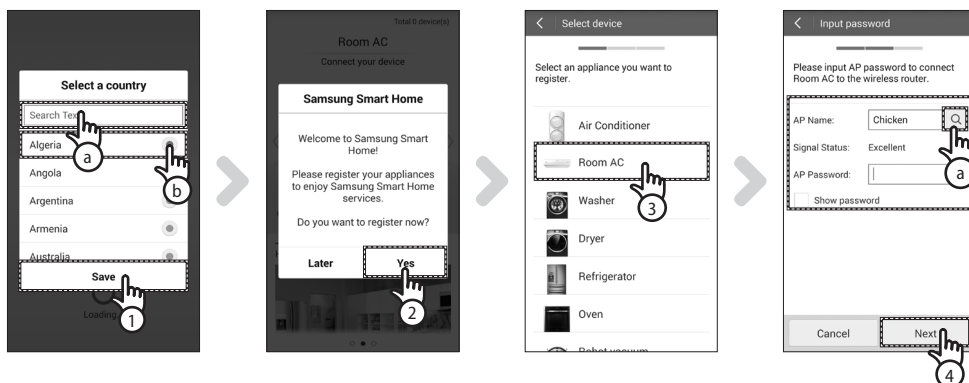
- You can download the Samsung Smart Home App on your smart phone by searching "Samsung Smart Home" on Play store, Galaxy Apps and iPhone App Store.



- Samsung Smart Home App supports android operating system 4.0(ICS) or higher and is optimized with Samsung Smart phones (Galaxy S or Note series). If you run the App using a Smart phone manufactured by other companies, some functions may operate differently.
- For iPhone, the App supports iOS 7 or higher. The UI of Samsung Smart Home App may change without advance notice for improvement of product use and performance.

Registering the product

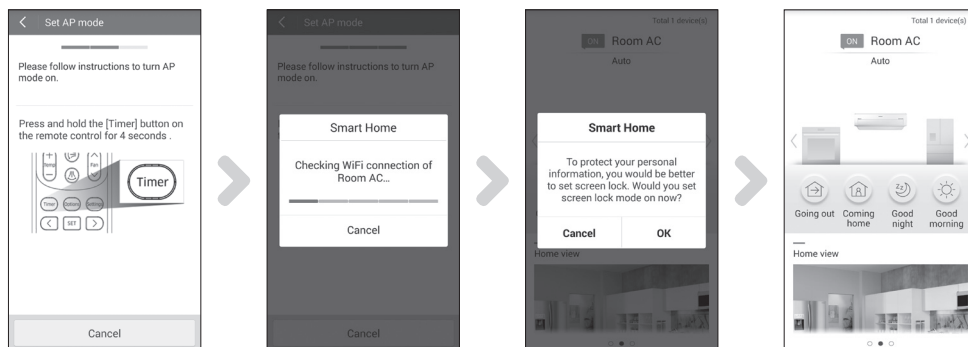
- Before using the Samsung Smart Home App, register the product to the Samsung Smart Home Service.



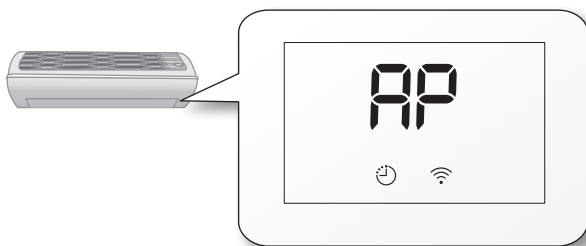
1. Search(a) or select(b) the user's country and press the **Save** button.



2. Press the **Yes** button to register the product to Samsung Smart Home services.
3. Select the **Room AC** on the product list.
4. Enter the information of wireless router which will be connected and then press the **Next** button.
 - If you want to change the connected router, press the (Q) icon(㉓) and select AP name of the wireless router.



5. After pressing and holding the **Timer** button on the remote control for 4 seconds.
 - **AP** message will be displayed on the front display panel of the air conditioner.



6. Set the air conditioner according to the guidance on the screen.
7. Network setting is performed automatically.
8. Screen lock function setting for Samsung Smart Home App appears.
9. When the product registration is completed, the main screen of the Samsung Smart Home App appears.
 - Air conditioner icon is added on the device list.



NOTE

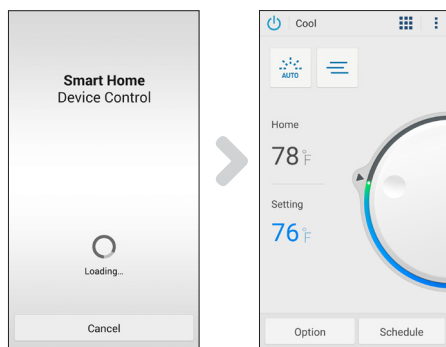
- For iPhone users, the process illustrated above can be a bit different.



Using Samsung Smart Home App

Downloading Samsung Smart Air conditioner App

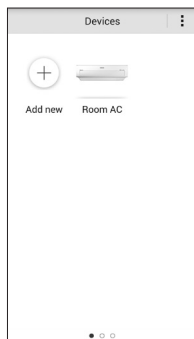
- ▶ The App Plug-in(RAC) which is only for use of air conditioner provides you a variety of functions of air conditioner such as Operation, Additional options, On/Off timer, Power consumption check, settings etc.
- 1. Select the air conditioner icon on the devices screen of Samsung Smart Home App.
 - If the Plug-in(RAC) is not installed, you will automatically move to Play store.
- 2. Install the Plug-in(RAC) App.
 - If the version of the App is updated, the installation screen (Play store) can be different from the images above.
- 3. When the installation is completed, select the Room AC icon on the device screen of Samsung Smart Home App again.



- 4. The loading screen of Samsung Smart Air conditioner App appears.
- 5. The control screen of the air conditioner appears on the Samsung Smart Air conditioner App.
 - For detailed information of the control screen, refer to the 'Control screen of the air conditioner'. (P.)

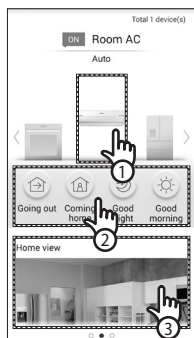


Description of screens and main functions



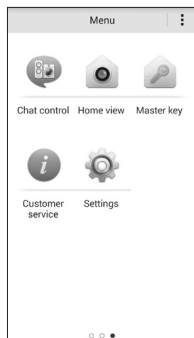
Devices screen

- ▶ After registering Samsung smart appliances to the Samsung Smart Home Service, you can control all of them remotely.



Main screen

1. Select the icon of smart appliance (Room AC) to move to the screen of Smart Home Device Control.
2. You can perform integrated control of Samsung smart appliances by 4 types such as Going out, Coming home, Good night, and Good morning.



Menu screen

- ▶ You can control Samsung smart appliances with 5 menus.

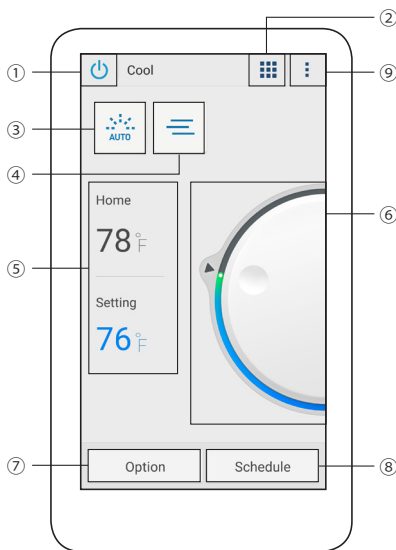
Chat control	You can control smart appliances easily or check the status of the appliances.
Home view	You can check indoor view from outside by using the camera installed on the smart appliances.
Master key	You can control multiple smart appliances at the same time using the master keys such as Going out, Coming home, Good night, and Good morning.
Customer service	You can download manuals of the product or request after sales service for product malfunction.
Settings	You can control or check the service(device addition, country selection, etc.) and information (version, open source).



Using Samsung Smart Home App

Control screen

You can skillfully control the air conditioner.



Classification	Item	Description
①	Power button	Turns on or off the air conditioner.
②	Mode button	Selects the desired operation.
③	Fan speed	Sets the fan speed of operation mode.
④	Fan direction button	Sets the fan direction of operation mode.
⑤	Current Temperature / Set temperature	Displays current or set temperature.
⑥	Temperature control button	Adjusts the indoor set temperature with the smart control button.
⑦	Option button	Selects options which can be additionally set for each operation mode.
⑧	Schedule button	Sets On or Off timer for each function.
⑨	Menu button	Sets 'Settings', 'Customer service', and 'Energy Monitor' menu.



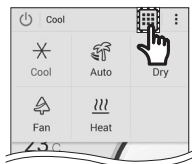
NOTE

- The location of menu button on the smart phone can be different depending on the types of smart phone.





Controlling the air conditioner

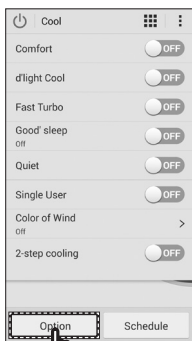


Selecting the operation mode

- ▶ Press the  button to select the operation mode.



- The available operation mode might be different depending on the air conditioner model.

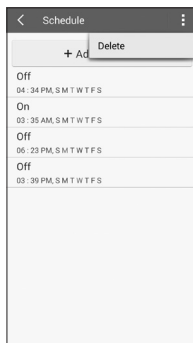
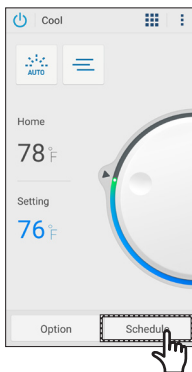


Controlling options

- ▶ Press the **Option** button to control options for each operation mode.



- The available options might be different depending on the air conditioner model.
- The fan speed and fan direction are set automatically according to the selected options.
- For detailed information on the options of the product, refer to the user manual.



Setting On/Off timer

- ▶ Press the **Schedule** button to turn on or off the air conditioner at reserved time.
- ▶ The maximum number of schedule for On/Off timer function is 10.
- ▶ Press the **Schedule** button to cancel the On/Off timer function.

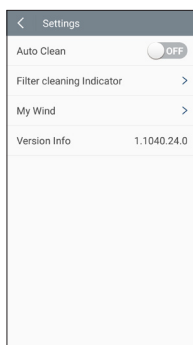
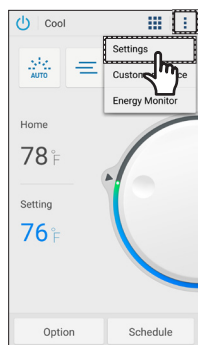


- Set time for On timer and Off timer should be different.
- NOTE** • Once the On/Off timer is set, the setting remains even if you unplug the air conditioner and plug in it again.



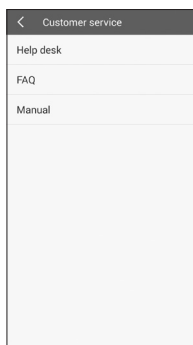
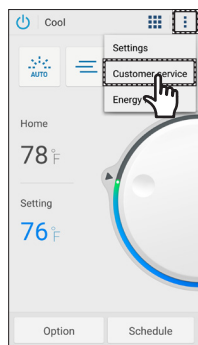
Using Samsung Smart Home App

Setting the air conditioner (for android operating system)



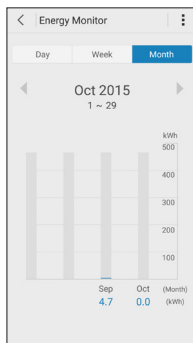
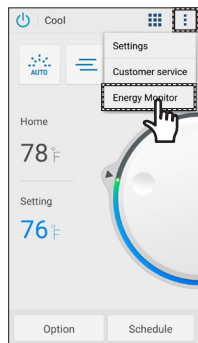
Settings

- ▶ Press the **Menu** button() and then press the **Settings** button on the control screen to check or set detailed information of air conditioner.
- ▶ The functions of Auto Clean, S-plasma ion, Filter cleaning Indicator, and My Wind can be set.



Customer service

- ▶ Press the **Menu** button() and then press the **Customer service** button on the control screen to download user manual of the product.



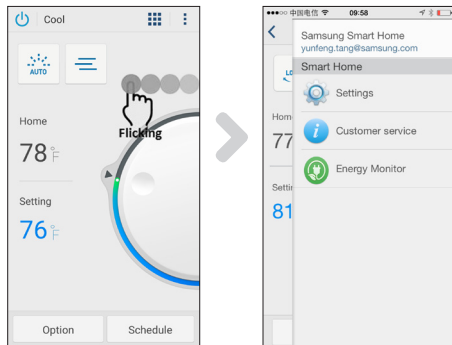
Energy Monitor

- ▶ Press the **Menu** button() and then press the **Energy Monitor** button on the control screen to check power consumption of the product (or usage hours).





Setting the air conditioner (for iOS operating system)



- Flick the screen to the left, then Settings, Customer service, Energy Monitor buttons will appear.
- You can operate it according to android system operating steps.



Troubleshooting

Before you make a call to a service center, please check the items in the table below.

Problem		Solution
Samsung Smart Home App cannot be searched on Play store, GALAXY Apps or iPhone App Store.		<ul style="list-style-type: none">• Samsung Smart Home App supports android operating system 4.0(IOS) or higher. For iPhone, the App supports iOS 7 or higher.
After installing Samsung Smart Home App, the air conditioner cannot be connected to the App.		<ul style="list-style-type: none">• Connect the air conditioner to wireless router by referring to "Registering the product" section in the user manual.
Samsung account cannot be accessed.		<ul style="list-style-type: none">• Check your ID and password on Samsung account screen.
The failure message appears when the device is being added.		<ul style="list-style-type: none">• The failure might be temporary due to the distance between the wired or wireless router and the air conditioner or other problems. Try it again after a while.• About 30 seconds after disconnecting power supply of the air conditioner, plug in the air conditioner and then try the setting again.
The control function of Samsung Smart App does not work.	Check whether the Wi-Fi indicator is turned on on the air conditioner display.	<ul style="list-style-type: none">• Check whether the air conditioner is connected to the wired or wireless router correctly.
	Check whether the Wi-Fi indicator blinks at 3 seconds interval on the air conditioner display.	<ul style="list-style-type: none">• Check whether the wired or wireless router is connected to the internet correctly.



Open Source Announcement

The software included in this product contains open source software. You may obtain the complete corresponding source code for a period of three years after the last shipment of this product by sending an email to mailto:oss.request@samsung.com.

It is also possible to obtain the complete corresponding source code in a physical medium such as a CD-ROM; a minimal charge will be required.

The following URL http://opensource.samsung.com/opensource/15_RAC/seq/5 leads to the download page of the source code made available and open source license information as related to this product. This offer is valid to anyone in receipt of this information.





Reference

English	Hereby, Samsung Electronics, declares that this Air conditioner is in compliance with the essential requirements and other relevant provisions of Directive 1999/5/EC. The official Declaration of conformity may be found at http://www.samsung.com , go to Support > Search Product Support and enter the model name. This equipment may be operated in all EU countries. In France, this equipment may only be used indoors.
Czech	Společnost Samsung Electronics tímto prohlašuje, že tento systém klimatizace splňuje základní požadavky a další související ustanovení Směrnice 1999/5/ES. Oficiální Prohlášení o shodě naleznete na webové stránce http://www.samsung.com . Klepněte na nabídku Podpora > Najít podporu k produktu a zadejte jméno modelu. Toto zařízení lze používat ve všech zemích EU. Ve Francii lze toto zařízení používat pouze ve vnitřních prostorech.
Danish	Samsung Electronics erklærer herved, at dette luftkonditioneringsanlæg overholder de grundlæggende krav og andre relevante bestemmelser i Direktiv 1999/5/EC. Den officielle overensstemmelseserklæring kan findes på http://www.samsung.com , gå til Support Support > Search Product Support (Produktsøgning), og indtast modelnavnet. Dette udstyr må bruges i alle EU-lande. I Frankrig må dette udstyr dog kun bruges indendørs.
German	Samsung Electronics erklärt hiermit, dass dieses Klimagerät konform zu allen wesentlichen Anforderungen oder relevanten Bestimmungen der Richtlinie 1999/5/EG ist. Die offizielle Konformitätserklärung finden Sie unter http://www.samsung.com . Wechseln Sie zu Support > Produktsuche, und geben Sie den Modellnamen ein. Dieses Gerät darf in allen EU-Ländern betrieben werden. In Frankreich darf dieses Gerät nur in Gebäuden verwendet werden.
Estonian	Käesolevaga kinnitab ettevõtte Samsung Electronics selle kliimaseadme vastavust direktiivi 1999/5/EÜ põhinõuetele ja nimetatud direktiivist tulenevatele teistele asjakohastele sätetele. Ametliku vastavusdeklaratsiooni leiata aadressilt http://www.samsung.com , minge jaotisesse Tugi > Tootetoe otsing ning sisestage mudeli nimi. Seda seadet võib kasutada kõigis EL riikides. Prantsusmaal võib seda seadet kasutada üksnes siseruumides.
Spanish	Por el presente documento Samsung Electronics declara que este aparato de aire acondicionado cumple los requisitos fundamentales y demás disposiciones pertinentes de la Directiva 1999/5/CE. La Declaración de conformidad oficial se puede encontrar en http://www.samsung.com ; vaya Atención al cliente > Soporte para productos e introduzca el nombre del modelo. Este equipo puede ser operado en todos los países de la unión europea. En Francia, este equipo sólo puede ser utilizado en interiores.
Greek	Με την παρούσα, η Samsung Electronics δηλώνει ότι αυτό το κλιματιστικό συμμορφώνεται με τις ουσιαστικές απαιτήσεις και τις λοιπές σχετικές διατάξεις της Οδηγίας 1999/5/ΕΚ. Μπορείτε να βρείτε την επίσημη Δήλωση συμμόρφωσης στη διαδικτυακή τοποθεσία http://www.samsung.com . Μεταβείτε στο Υποστήριξη > Αναζήτηση υποστήριξης προϊόντος και εισαγάγετε το όνομα μοντέλου. Ο παρών εξοπλισμός μπορεί να λειτουργήσει σε όλες τις χώρες της Ευρωπαϊκής Ένωσης. Στη Γαλλία, ο παρών εξοπλισμός μπορεί να χρησιμοποιηθεί μόνο σε εσωτερικό χώρο.
French	Par la présente, Samsung Electronics déclare que ce climatiseur est conforme aux exigences essentielles et autres dispositions applicables de la directive 1999/5/CE. La déclaration de conformité officielle est disponible à l'adresse http://www.samsung.com . Accédez à Support (Assistance) > Search Product Support (Assistance recherche produit) et saisissez le nom du modèle. Cet équipement peut fonctionner dans tous les pays de l'Union européenne. En France, toutefois, il ne peut être utilisé qu'à l'intérieur.
Italian	Samsung Electronics dichiara qui di seguito che i requisiti essenziali di questo Climatizzatore sono conformi alle prescrizioni ed alle altre imposizioni ad essi relative che sono contenute nella Direttiva 1999/5/EC. La Dichiarazione Ufficiale di Conformità è scaricabile dal sito web http://www.samsung.com , entrando in Support > Supporto Ricerca Prodotti e digitandovi il modello dell'apparecchio. Questo dispositivo funziona in tutti i Paesi dell'UE. In Francia, questo dispositivo può essere utilizzato solo al chiuso.
Latvian	Ar šo Samsung Electronics deklarē, ka šis gaisa kondicionieris atbilst visām pamatprasībām un attiecīgajiem nosacījumiem, kas izklāstīti Direktīvā 1999/5/EK. Oficiālo atbilstības deklarāciju var atrast vietnē http://www.samsung.com , izvēloties Atbalsts > Atrast izstrādājuma atbalstu un ievadot modeļa nosaukumu. Šo aprīkojumu var lietot visās ES valstīs. Francijā šo aprīkojumu drīkst lietot tikai telpās.
Lithuanian	„Samsung Electronics“ patvirtina, kad šis oro kondicionierius atitinka pagrindinius Direktyvos 1999/5/EB reikalavimus ir kitas atitinkamas nuostatas. Oficialią atitikties deklaraciją galima rasti adresu http://www.samsung.com (eikite į „Support“ > „Search Product Support“ ir įveskite modelio pavadinimą). Šią įrangą galima naudoti visose ES šalyse. Prancūzijoje šią įrangą galima naudoti tik patalpose.
Dutch	Hierbij verklaart Samsung Electronics dat deze airconditioner voldoet aan de essentiële vereisten en overige relevante bepalingen van Richtlijn 1999/5/EG. De officiële conformiteitsverklaring kunt u vinden op http://www.samsung.com . Ga naar Support (Ondersteuning) > Search Product Supporten (Productondersteuning zoeken) en geef de naam van het model op. Deze apparatuur mag in alle EU-landen worden gebruikt. In Frankrijk mag deze apparatuur alleen binnenshuis worden gebruikt.
Hungarian	A Samsung Electronics ezennel kijelenti, hogy ez a Légkondicionáló berendezés megfelel az 1999/5/EK irányelv alapvető követelményeinek és egyéb rendelkezéseinek. A hivatalos Megfelelőségi nyilatkozat az http://www.samsung.com honlapon olvasható. Ehhez lépjen a Támogatás oldalra, és a Keres mezőben adja meg a modellszámot. Ez a berendezés az Európai Unió minden országában üzemeltethető. Franciaországban ez a készülék csak beltérben használható.

English-16





Polish	Firma Samsung Electronics oświadcza, że niniejszy klimatyzator spełnia najważniejsze wymogi i inne odpowiednie postanowienia Dyrektywy 1999/5/WE. Oficjalna Deklaracja zgodności znajduje się na stronie http://www.samsung.com . Należy kliknąć kolejno Pomoc > Wyszukaj pomoc dla produktu i wprowadzić nazwę modelu. Z tego urządzenia można korzystać we wszystkich krajach Unii Europejskiej. We Francji z tego urządzenia można korzystać wewnątrz budynków.
Portuguese	A Samsung Electronics declara que este aparelho de ar condicionado está em conformidade com os requisitos essenciais e outras provisões relevantes da Directiva 1999/5/CE. A Declaração de Conformidade oficial pode ser consultada em http://www.samsung.com . Para aceder, vá para Support > Search Product Support e escreva o nome do modelo. Esse equipamento pode ser utilizado em todos os países da EU. Na França, esse equipamento só poderá ser utilizado em espaços interiores.
Slovenian	Samsung Electronics izjavlja, da ta klimatska naprava izpolnjuje bistvene zahteve in druga ustrezna določila Direktive 1999/5/ES. Ta uradna izjava o skladnosti je na voljo na http://www.samsung.com . Pomaknite se na Support (Podpora) > Search Product Support (Iskanje po podpori za izdelke) in vnesite ime modela. To opremo lahko uporabljate v vseh državah EU. V Franciji lahko to opremo uporabljate le znotraj.
Slovak	Spoločnosť Samsung Electronics týmto vyhlasuje, že táto klimatizácia je v súlade s nevyhnutnými požiadavkami a príslušnými ustanoveniami smernice 1999/5/ES. Oficiálne vyhlásenie o zhode nájdete na lokalite http://www.samsung.com , prejdite na možnosť Podpora > Vyhľadať podporu k produktu a zadajte názov modelu. Toto zariadenie môže byť v prevádzke vo všetkých európskych krajinách. Vo Francúzsku môžete toto zariadenie používať iba vo vnútri.
Finnish	Samsung vakuttaa, että tämä ilmastointilaitte on direktiivin 1999/5/EY oleellisten vaatimusten ja muiden määräysten mukainen. Virallinen vaatimustenmukaisuusvakuutus on osoitteessa http://www.samsung.com . Siirry kohtaan Support (Tuki) > Search Product Support (Etsi tuotetukea), ja anna laitteen mallin nimi. Tätä laitetta voidaan käyttää kaikissa Euroopan unionin maissa. Ranskassa tätä laitetta voidaan käyttää vain sisätiloissa.
Swedish	Härmed intygar Samsung Electronics att denna luftkonditionering uppfyller de väsentliga kraven och övriga relevanta bestämmelser som framgår av direktiv 1999/5/EG. Den officiella försäkran om överensstämmelse finns på http://www.samsung.com , under Support > Search Product Support (Sök i produktsupport) och ange modellnamnet. Den här utrustningen får användas i alla EU-länder. Den här utrustningen får endast användas inomhus i Frankrike.
Bulgarian	С настоящето Samsung Electronics декларира, че този климатик е в съответствие с основните изисквания и други приложими разпоредби на Директива 1999/5/EC. Официалната Декларация за съответствие може да се намери на http://www.samsung.com , отидете на Поддръжка > Намери и въведете името на модела. С това оборудване може да се работи във всички държави от ЕС. Във Франция това оборудване може да се използва само на закрито.
Romanian	Prin prezenta, Samsung Electronics declară că acest aparat de aer condiționat este în conformitate cu cerințele esențiale și alte prevederi relevante ale Directivei 1999/5/CE. Declarația oficială de conformitate poate fi găsită pe site-ul http://www.samsung.com , accesând Support (Suport) > Search Product Support (Găsiți) și introducând numele de model. Acest echipament poate fi folosit în toate statele UE. În Franța, acest echipament poate fi folosit doar în interior.
Norwegian	Samsung erklærer herved at denne luftkondisjoneringsenheten er i samsvar med de avgjørende kravene og andre relevante vilkår i direktiv 1999/5/EC. Den offisielle samsvarserklæringen er å finne på http://www.samsung.com . Gå til Support > Search Product Support (Søk etter produktsupport), og skriv inn modellnavnet. Dette utstyret kan brukes i alle EU-land. I Frankrike kan dette utstyret kun brukes innendørs.
Turkish	Bu belge ile Samsung Electronics, bu Klimanın, 1999/5/EC Yönetmeliğinin temel gerekliliklerine ve ilgili hükümlerine uygun olduğunu beyan eder. Uygunluğun resmi Deklarasyonu http://www.samsung.com sitesinde bulunabilir, Destek > Ürün Desteği Ara bölümüne giderek model adını yazınız. Bu cihaz tüm AB ülkelerinde kullanılabilir. Fransa'da bu cihaz sadece iç mekanlarda kullanılabilir.
Russian	Настоящим компания Samsung Electronics заявляет, что данный кондиционер воздуха соответствует основным требованиям и другим соответствующим положениям Директивы 1999/5/EC. С официальной декларацией о соответствии можно ознакомиться на сайте http://www.samsung.com , откройте "Поддержка" > "Найти свой продукт" и введите название модели. Данное оборудование можно использовать без ограничений в большинстве стран ЕС. Но нельзя использовать вне помещений во Франции.
Ukrainian	Компанія Samsung Electronics стверджує, що цей кондиціонер відповідає важливим вимогам та іншим відповідним положенням Директиви 1999/5/EC. Офіційну Декларацію щодо сумісності можна прочитати за адресою http://www.samsung.com ; перейдіть до пункту «Підтримка» > Пошук з підтримки продукту» і введіть номер моделі. Це обладнання можна використовувати в усіх країнах ЄС. У Франції це обладнання можна використовувати лише на вулиці.
Serbian	Ovim putem kompanija Samsung Electronics izjavljuje da je ovaj klima uređaj usklađen sa osnovnim zahtevima i drugim primenljivim odredbama direktive 1999/5/EC. Zvanična izjava o usklađenosti dostupna je na Web lokaciji http://www.samsung.com , izaberite Podrška > Pretraga podrške za proizvode i unesite naziv modela. Ova oprema se može koristiti u svim zemljama EU. U Francuskoj ova oprema može da se koristi samo unutar prostorija.



Reference

Croatian	Samsung Electronics ovime izjavljuje da je ovaj klima uređaj usklađen s osnovnim zahtjevima i drugim relevantnim odredbama Direktive 1999/5/EZ.
	Službenu Izjavu o sukladnosti možete pronaći na adresi http://www.samsung.com : prijedite na Podrška > Pronađite podršku za proizvod i zatim unesite naziv modela.
	Ova oprema može se koristiti u svim državama članicama EU.
	U Francuskoj se ovaj uređaj može koristiti samo u zatvorenom prostoru.



03 OTHERS



SAMSUNG

Smart air conditioner APP can be altered without notice for quality improvement and also be deleted depending on the circumstances of manufacturing firms .





Smart A/C application

Air Conditioner user manual

CE0678

imagine the possibilities



EN ES FR DB68-05638A-00

SAMSUNG

