



Cassette Type Series

Slim 1 Way cassette

2 Way cassette

4 Way cassette

AM***FN1DEH

AM***JN1DEH

AM***FN2DEH

AM***FN4DEH

Air Conditioner user manual

imagine the possibilities

Thank you for purchasing this Samsung product.

Features of your new air conditioner

Cool Summer Offer

On those hot sweltering summer days and long restless nights, there is no better escape from the heat than the cool comforts of home. Your new air conditioner brings an end to exhausting hot summer days and lets you rest. This summer, beat the heat with your own air conditioner.

Cost Efficient System

Your new air conditioner not only provides maximum cooling power in the summer, but can also be an efficient heating method in the winter with the advanced "Heat pump" system. This technology is up to 300% more efficient than electrical heating, so you can further reduce its running cost. Now, meet year-round needs with one air conditioner.

A Look for Everywhere

The elegant and harmonious design gives priority to the esthetics of your space and complements any of your existing interior décor. With its soft color and rounded-edge shape, the new air conditioner adds class to any room. Enjoy what your air conditioner offers both functionally and esthetically.

Compact and easy-to-use Cassette type

Designed to be installed into most types of suspended ceiling, the cassette type air conditioner is ideal for business and commercial accommodations. Fresh cool/warm air can be provided through the controllable 1, 2 or 4 sides of the unit. All functions of the air conditioner will be controlled easily via a remote control.

Contents

Safety precautions	4
Viewing your air conditioner	12
Using your air conditioner	15
Cleaning and maintaining the air conditioner	17
Appendix	30
Technical Specifications	34



Correct Disposal of This Product (Waste Electrical & Electronic Equipment)

(Applicable in countries with separate collection systems)

This marking on the product, accessories or literature indicates that the product and its electronic accessories (e.g. charger, headset, USB cable) should not be disposed of with other household waste at the end of their working life. To prevent possible harm to the environment or human health from uncontrolled waste disposal, please separate these items from other types of waste and recycle them responsibly to promote the sustainable reuse of material resources.

Household users should contact either the retailer where they purchased this product, or their local government office, for details of where and how they can take these items for environmentally safe recycling.








Business users should contact their supplier and check the terms and conditions of the purchase contract. This product and its electronic accessories should not be mixed with other commercial wastes for disposal.

Safety precautions

Before using your new air conditioner, please read this manual thoroughly to ensure that you know how to safely and efficiently operate the extensive features and functions of your new appliance.


Because the following operating instructions cover various models, the characteristics of your air conditioner may differ slightly from those described in this manual. If you have any questions, call your nearest contact center or find help and information online at www.samsung.com.

Important safety symbols and precautions:

 WARNING	Hazards or unsafe practices that may result in severe personal injury or death.
 CAUTION	Hazards or unsafe practices that may result in minor personal injury or property damage.
	Follow directions.
	Do NOT attempt.
	Make sure the machine is grounded to prevent electric shock.
	Unplug the power plug from the wall socket.
	Do NOT disassemble.

FOR INSTALLATION

WARNING

-  **Use the power line with the power specifications of the product or higher and use the power line for this appliance only. In addition, do not use an extension line.**
 - ▶ Extending the power line may result in electric shock or fire.
 - ▶ Do not use an electric transformer. It may result in electric shock or fire.
 - ▶ If the voltage/frequency/rated current condition is different, it may cause fire.

The installation of this appliance must be performed by a qualified technician or service company.

- ▶ Failing to do so may result in electric shock, fire, explosion, problems with the product, or injury.

! Install a switch and circuit breaker dedicated to the air conditioner.

- ▶ Failing to do so may result in electric shock or fire.

Fix the outdoor unit firmly so that the electric part of the outdoor unit is not exposed.

- ▶ Failing to do so may result in electric shock or fire.

⊘ Do not install this appliance near a heater, inflammable material. Do not install this appliance in a humid, oily or dusty location, in a location exposed to direct sunlight and water (rain drops). Do not install this appliance in a location where gas may leak.

- ▶ This may result in electric shock or fire.

Never install the outdoor unit in a location such as on a high external wall where it could fall.

- ▶ If the outdoor unit falls, it may result in injury, death or property damage.

⚡ This appliance must be properly grounded. Do not ground the appliance to a gas pipe, plastic water pipe, or telephone line.

- ▶ Failure to do so may result in electric shock, fire, an explosion, or other problems with the product.
- ▶ Never plug the power cord into a socket that is not grounded correctly and make sure that it is in accordance with local and national codes.

Safety precautions

FOR INSTALLATION



❗ Install your appliance on a level and hard floor that can support its weight.

- ▶ Failing to do so may result in abnormal vibrations, noise, or problems with the product.

Install the draining hose properly so that water is drained correctly.

- ▶ Failing to do so may result in water overflowing and property damage.

When installing the outdoor unit, make sure to connect the draining hose so that draining is performed correctly.

- ▶ The water generated during the heating operation by the outdoor unit may overflow and result in property damage.
In particular, in winter, if a block of ice falls, it may result in injury, death or property damage.

FOR POWER SUPPLY



❗ When the circuit breaker is damaged, contact your nearest service center.

⊘ Do not pull or excessively bend the power line. Do not twist or tie the power line. Do not hook the power line over a metal object, place a heavy object on the power line, insert the power line between objects, or push the power line into the space behind the appliance.

- ▶ This may result in electric shock or fire.

FOR POWER SUPPLY



⚡ When not using the air conditioner for a long period of time or during a thunder/lightning storm, cut the power at the circuit breaker.

- ▶ Failing to do so may result in electric shock or fire.

❗ If the appliance is flooded, please contact your nearest service center.

▶ Failing to do so may result in electric shock or fire.

If the appliance generates a strange noise, a burning smell or smoke, unplug the power plug immediately and contact your nearest service center.

▶ Failing to do so may result in electric shock or fire.

In the event of a gas leak (such as propane gas, LP gas, etc.), ventilate immediately without touching the power line.

Do not touch the appliance or power line.

▶ Do not use a ventilating fan.

▶ A spark may result in an explosion or fire.

To reinstall the air conditioner, please contact your nearest service center.

▶ Failing to do so may result in problems with the product, water leakage, electric shock, or fire.

▶ A delivery service for the product is not provided. If you reinstall the product in another location, additional construction expenses and an installation fee will be charged.

▶ Especially, when you wish to install the product in an unusual location such as in an industrial area or near the seaside where it is exposed to the salt in the air, please contact your nearest service center.

⊘ Do not touch the circuit breaker with wet hands.

▶ This may result in electric shock.

Do not strike or pull the air conditioner with excessive force.

▶ This may result in fire, injury, or problems with the product.

Do not place an object near the outdoor unit that allows children to climb onto the machine.

▶ This may result in children seriously injuring themselves.

Safety precautions

FOR USING



⊘ **Do not turn the air conditioner off with the circuit breaker while it is operating.**

- ▶ Turning the air conditioner off and then on again with the circuit breaker may cause a spark and result in electric shock or fire.

After unpacking the air conditioner, keep all packaging materials well out of the reach of children, as packaging materials can be dangerous to children.

- ▶ If a child places a bag over its head, it may result in suffocation.

Do not insert your fingers or foreign substances into the outlet when the air conditioner is operating or the front panel is closing.

- ▶ Take special care that children do not injure themselves by inserting their fingers into the product.

Do not touch the front panel with your hands or fingers during the heating operation.

- ▶ This may result in electric shock or burns.

Do not insert your fingers or foreign substances into the air inlet/outlet of the air conditioner.

- ▶ Take special care that children do not injure themselves by inserting their fingers into the product.

Do not use this air conditioner for long periods of time in badly ventilated locations or near infirm people.

- ▶ Since this may be dangerous due to a lack of oxygen, open a window at least once an hour.

⚠ **If any foreign substance such as water has entered the appliance, cut the power by unplugging the power plug and turning the circuit breaker off and then contact your nearest service center.**

- ▶ Failing to do so may result in electric shock or fire.

FOR USING



WARNING

⊘ Do not attempt to repair, disassemble, or modify the appliance yourself.

- ▶ Do not use any fuse (such as cooper, steel wire, etc.) other than the standard fuse.
- ▶ Failing to do so may result in electric shock, fire, problems with the product, or injury.

FOR USING



CAUTION

❗ Do not place objects or devices under the indoor unit.

- ▶ Water dripping from the indoor unit may result in fire or property damage.

Check that the installation frame of the outdoor unit is not broken at least once a year.

- ▶ Failing to do so may result in injury, death or property damage.

Max current is measured according to IEC standard for safety and current is measured according to ISO standard for energy efficiency.

⊘ Do not stand on top of the appliance or place objects (such as laundry, lighted candles, lighted cigarettes, dishes, chemicals, metal objects, etc.) on the appliance.

- ▶ This may result in electric shock, fire, problems with the product, or injury.

Do not operate the appliance with wet hands.

- ▶ This may result in electric shock.

Do not spray volatile material such as insecticide onto the surface of the appliance.

- ▶ As well as being harmful to humans, it may also result in electric shock, fire or problems with the product.

Do not drink the water from the air conditioner.

- ▶ The water may be harmful to humans.

Safety precautions

FOR USING



- ⊘ **Do not apply a strong impact to the remote controller and do not disassemble the remote controller.**

Do not touch the pipes connected with the product.

▶ This may result in burns or injury.

Do not use this air conditioner to preserve precision equipment, food, animals, plants or cosmetics, or for any other unusual purposes.

▶ This may result in property damage.

Avoid directly exposing humans, animals or plants from the air flow from the air conditioner for long periods of time.

▶ This may result in harm to humans, animals or plants.

This appliance is not intended for use by persons (including children) with reduced physical, sensory or mental capabilities, or lack of experience and knowledge, unless they have been given supervision or instruction concerning use of the appliance by a person responsible for their safety. Children should be supervised to ensure that they do not play with the appliance.

For use in Europe: This appliance can be used by children aged from 8 years and above and persons with reduced physical, sensory or mental capabilities or lack of experience and knowledge if they have been given supervision or instruction concerning use of the appliance in a safe way and understand the hazards involved. Children shall not play with the appliance. Cleaning and user maintenance shall not be made by children without supervision.

FOR CLEANING



WARNING

- ⊘ **Do not clean the appliance by spraying water directly onto it. Do not use benzene, thinner or alcohol to clean the appliance.**

▶ This may result in discoloration, deformation, damage, electric shock or fire.

Before cleaning or performing maintenance, unplug the air conditioner from the wall socket and wait until the fan stops.

▶ Failing to do so may result in electric shock or fire.

FOR CLEANING



CAUTION

- ❗ **Take care when cleaning the surface of the heat exchanger of the outdoor unit since it has sharp edges.**

▶ To avoid cutting your fingers, wear thick cotton gloves when cleaning it.

- ⊘ **Do not clean the inside of the air conditioner by yourself.**

▶ For cleaning inside the appliance, contact your nearest service center.

▶ When cleaning the internal filter, refer to the descriptions in the 'Cleaning and maintaining the air conditioner' section.

▶ Failure to do may result in damage, electric shock or fire.

Viewing your air conditioner

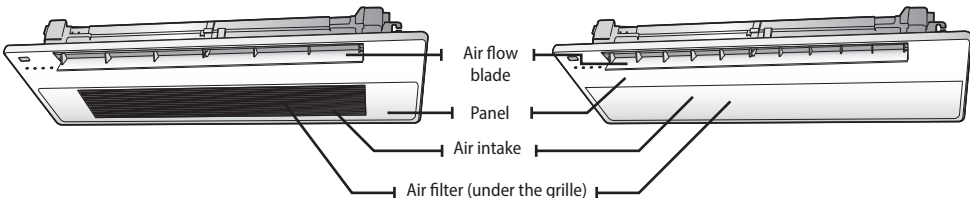
Congratulations on the purchase of the air conditioner. We hope you enjoy the features of your air conditioner and stay cool or warm with optimal efficiency.
Please read the user manual to get started and to make the best use of the air conditioner.

Slim 1 way cassette

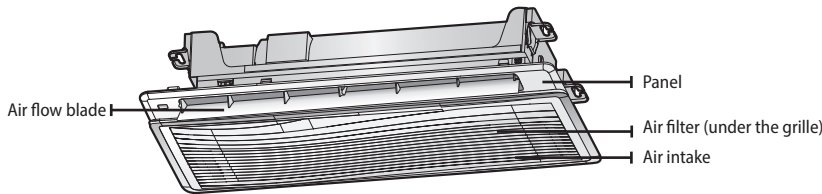
Main parts

PC1NUSMAN

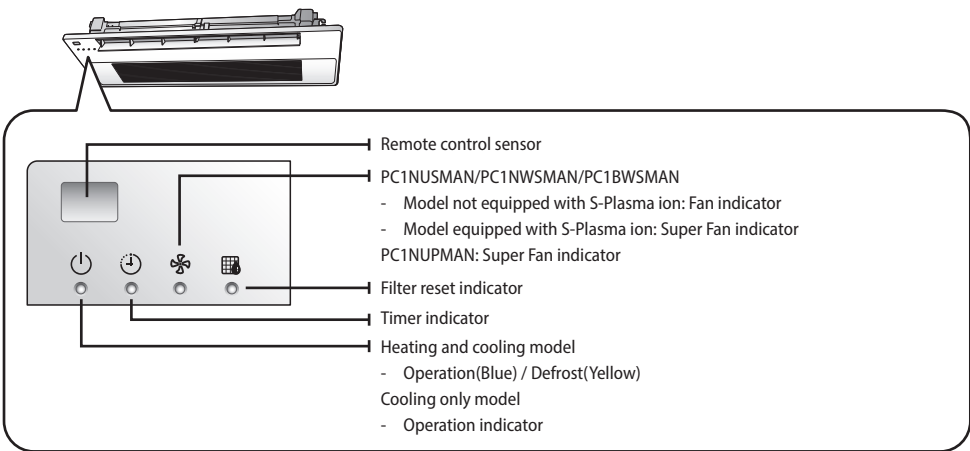
PC1NUPMAN



PC1NWSMAN/PC1BWSMAN



Display

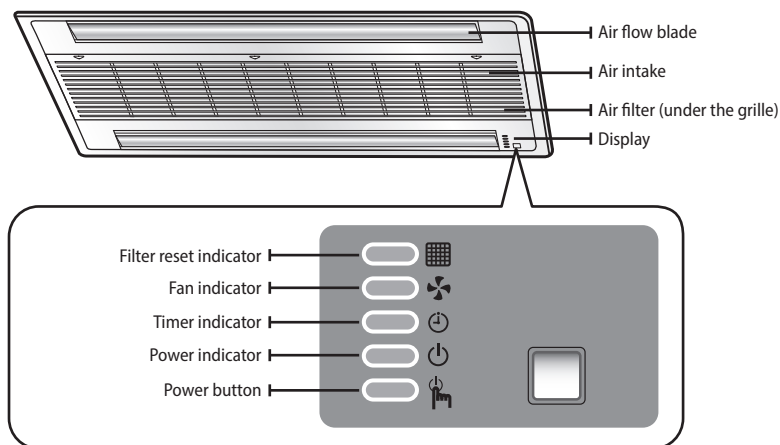


When operating an indoor unit (including Fan mode), SPi will not operate automatically.
So, press the [Super Fan] button on the wireless remote controller to operate SPi.

2 way cassette

Main parts and Display

PC2NUSMEN



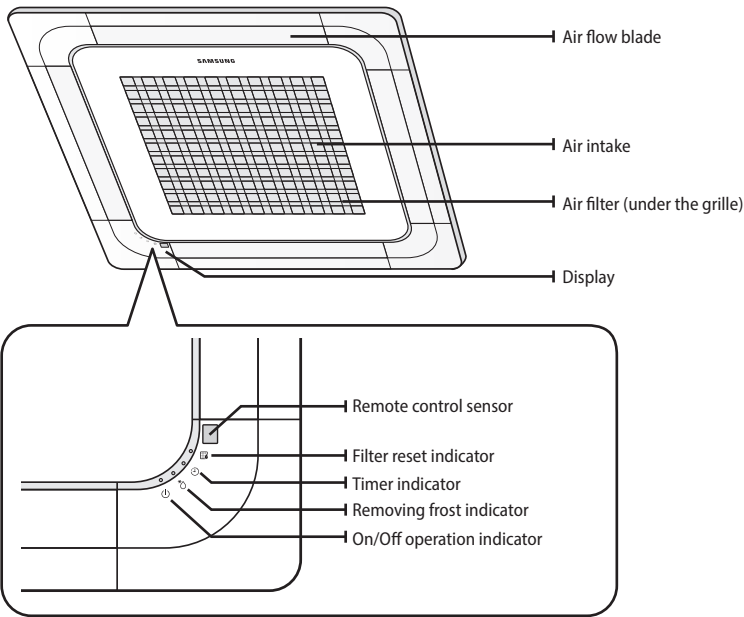
NOTE

Your air conditioner and display may look slightly different from the illustration shown above depending on your model.

Viewing your air conditioner

4 way cassette

Main parts and Display




Your air conditioner and display may look slightly different from the illustration shown above depending on your model.

Using your air conditioner

Tips on using air conditioner

Here are some tips that you would follow when using your air conditioner.

TOPIC	RECOMMENDATION
Cooling	<ul style="list-style-type: none">• If current outside temperatures are much higher than the selected indoor temperature, it may take time to bring the inner temperature to the desired coolness.• Avoid drastically turning down the temperature. Energy is wasted and the room does not cool faster.
Heating	<ul style="list-style-type: none">• Since the air conditioner heats the room by taking heat energy from outdoor air, the heating capacity may decrease when outdoor temperatures are extremely low. If you feel the air conditioner insufficiently heats, using an additional heating appliance in combination with the air conditioner is recommended.
Frost & De-ice	<ul style="list-style-type: none">• When the air conditioner runs in Heat mode, due to temperature difference between the unit and the outside air, frost will form. If this happens:<ul style="list-style-type: none">- The air conditioner stops heating.- The air conditioner will operate automatically in De-ice mode for 10 minutes.- The steam produced on the outdoor unit in De-ice mode is safe.• No intervention is required; after about 10 minutes, the air conditioner operates again normally. <div> NOTE The unit will not operate when it starts to de-ice.</div>
Fan	<ul style="list-style-type: none">• Fan may not operate for about 3~5 minutes at the beginning to prevent any cold blasts while the air conditioner is warming up.

Using your air conditioner

TOPIC	RECOMMENDATION
High indoor/ outdoor temperatures	<ul style="list-style-type: none">• If both indoor and outdoor temperatures are high and the air conditioner is running in Heat mode, the outdoor unit's fan and compressor may stop at times. This is normal; wait until the air conditioner turns on again.
Power failure	<ul style="list-style-type: none">• If a power failure occurs during the operation of the air conditioner, the operating immediately stops and unit will be off. When power returns, the air conditioner will run automatically.
Protection mechanism	<ul style="list-style-type: none">• If the air conditioner has just been turned on after operation stops or being plugged in, cool/warm air does not come out for 3 minutes to protect the compressor of the outdoor unit.

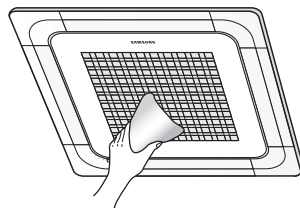
Cleaning and maintaining the air conditioner

For the best performance of your air conditioner, clean it periodically. When cleaning, make sure to unplug the unit for user's safety.

Cleaning the exterior

Wipe the surface of the unit with a slightly wet or dry cloth when needed. Wipe off dirt of odd-shaped area by using a soft brush.

Example : 4 way cassette



Do not use benzene or thinner.
They may damage the surface of the air conditioner and can create a risk of fire.

Cleaning the grille

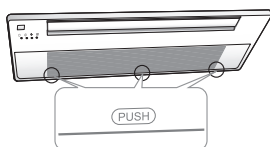
When cleaning the grille, make sure to unplug the unit. No special tools are needed to clean it.

Slim 1 way cassette

1. Open the grille.

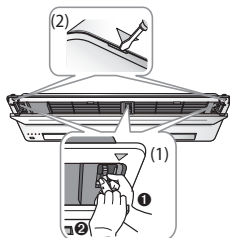
PC1NUSMAN

Press the [Push] signs (PC1NUSMAN : Located in 3 places) and open the grille.



PC1NUPMAN

- When detaching the panel, grip the link part where the panel and intake panel are connected ❶ and push up the link at the panel part ❷ to disconnect as shown in the picture (1).
- When power supply malfunctions, detach the panel by using a driver at the marked point (2) and proceed with the same method as shown in the picture (1) to detach the panel and then check the power connection status.

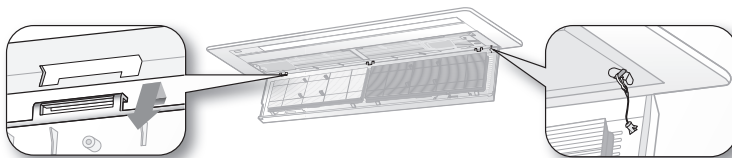


Cleaning and maintaining the air conditioner

2. Unhook the safety clips by holding the front grille.

3. Detach the front grille.

Hold the front grille at a 45° angle, lift it up slightly and then pull the grille forward.



Hold the grille to prevent dropping outside from the opening of the front grille. If not, it may cause a potential risk of personal injury.

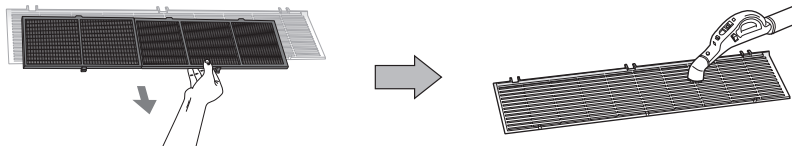


Cleaning the grille is also available while being attached to the panel.

4. Pull out the Air filter.

Grab the Air filter and lift it upwards while pushing slightly, and then pull the Air filter forward.

5. Clean the grille with a vacuum cleaner or soft brush. If dust is too heavy, then rinse it with running water and dry it in a ventilated area.



6. Insert the Air filter back in its original position.

7. Reattach the front grille.

Place the hook on the unit to the right place then push the front grille upward. Mount the safety clips to its original position.



The illustration shown above may differ from yours depending on your model.

2 way cassette

PC2NUSMEN

1. Open the front grille.

Push the [▼] tabs located in 3 places to unlock the groove on the front grille.

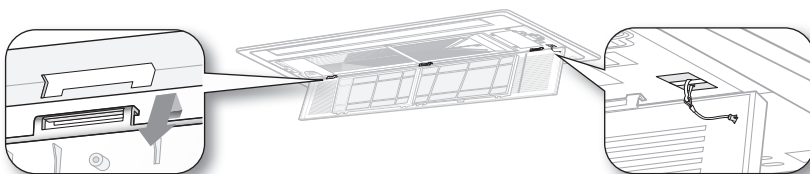
The grille automatically drops. Two safety clips are mounted to the inside front grille to prevent dropping downward.



2. Unhook the safety clips by holding the front grille.

3. Detach the front grille.

Hold the front grille at a 45° angle, lift it up slightly and then pull the grille forward.



Hold the grille to prevent dropping outside from the opening of the front grille. If not, it may cause a potential risk of personal injury.

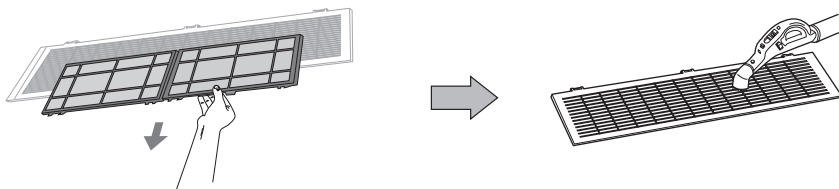


Cleaning the grille is also available while being attached to the panel.

4. Pull out the Air filter.

Grab the Air filter and lift it upwards while pushing slightly, and then pull the Air filter forward.

5. Clean the grille with a vacuum cleaner or soft brush. If dust is too heavy, then rinse it with running water and dry it in a ventilated area.



6. Insert the Air filter back in its original position.

7. Reattach the front grille.

Place the hook on the unit to the right place then push the front grille upward. Mount the safety clips to its original position.

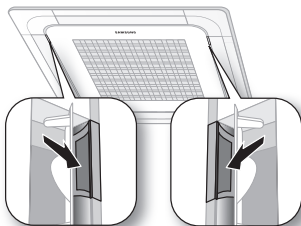
Cleaning and maintaining the air conditioner

4 way cassette

PC4NUSKAN / PC4NUSKEN / PC4NBSKAN

1. Open the front grille.

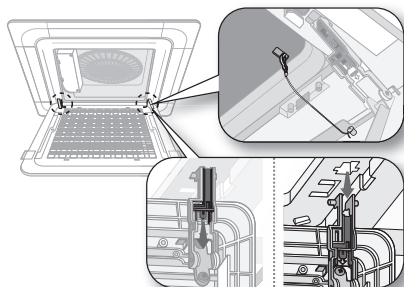
Open the blades on the left and right side of the Samsung logo. Press both of the levers and pull the grille downward. Two safety clips are mounted to the front grille to prevent it from dropping.



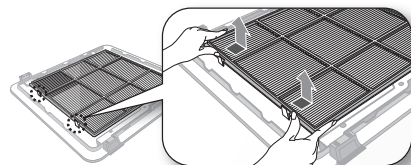
2. Detach the front grille.

Remove the safety clip first and then remove the hinge. Pull the green switch on the hinge part down and then press and pull the hinge part to remove the grille. (There are two hinges on the grille and you must apply this step on both of them to remove the grille.)

If you want to clean the filter only, you do not have to detach the grille. Follow step 4 and 5



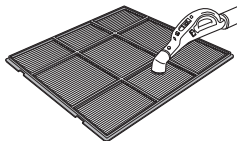
3. Pull out the Air filter.



4. Clean the grille and Air filter with a vacuum cleaner or soft brush. If dust is too heavy, then rinse it with running water and dry it in a ventilated area.

For best conditions, repeat every two weeks.

If the Air filter dries in a confined (or humid) area, odors may generate. If it occurs, re-clean and dry it in a well-ventilated area.



5. Insert the Air filter back in its original position.
You will hear a click sound when the Air filter is properly placed.
6. Attach the front grille.
Reverse the above steps to attach the front grille.



NOTE

- The illustration shown above may differ from yours depending on your model.
- After cleaning the filter, press the Filter Reset button on the remote control for 2 seconds to reset the filter schedule. Filter sign indicator will be on for cleaning time.
- If the angle on the air flow blades has been changed by user due to opening the front grille for installation or maintenance, you must turn off the circuit breaker and turn it on again before using the air conditioner. Otherwise, angles of the each angle can be different or some of the blade may not close when the product is off.

Cleaning and maintaining the air conditioner

Cleaning the filter

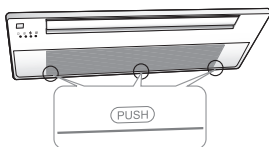
When cleaning the filter, make sure to unplug the power from the unit. Washable foam based Air filter captures large particles from the air. The filter is cleaned with a vacuum or by hand washing.

Slim 1 way cassette

1. Open the grille.

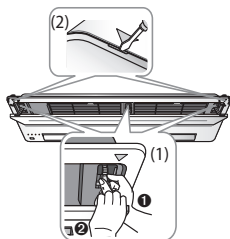
PC1NUSMAN

Press the [Push] signs (PC1NUSMAN : Located in 3 places) and open the grille.



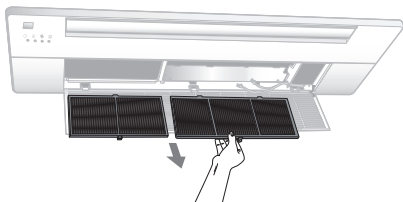
PC1NUPMAN

- When detaching the panel, grip the link part where the panel and intake panel are connected ❶ and push up the link at the panel part ❷ to disconnect as shown in the picture (1).
- When power supply malfunctions, detach the panel by using a driver at the marked point (2) and proceed with the same method as shown in the picture (1) to detach the panel and then check the power connection status.



2. Pull out the Air filter.

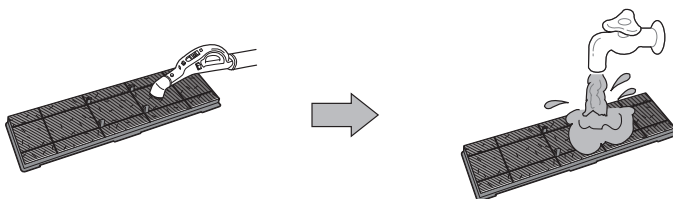
Grab the Air filter and lift it upwards while pushing slightly, and then pull the Air filter forward.



NOTE

When cleaning the filter you do not need to detach the grille at all times. If you want to detach the front grille, see step 2 and 3 on page 18 for instructions.

3. Clean the Air filter with a vacuum cleaner or soft brush. If dust is too heavy, then rinse it with running water and dry it in a ventilated area.



NOTE

- For best conditions, repeat every two weeks.
- If the Air filter dries in a confined (or humid) area, odors may generate. If it occurs, re-clean and dry it in a well-ventilated area.

4. Insert the Air filter back in its original position.

You will hear a click sound when the Air filter is properly placed.

5. Close the front grille by pushing it upward.



NOTE

- The illustration shown above may differ from yours depending on your model.
- After cleaning the filter, press the Filter Reset button on the remote control for 2 seconds to reset the filter schedule. Filter sign indicator will be on for cleaning time.

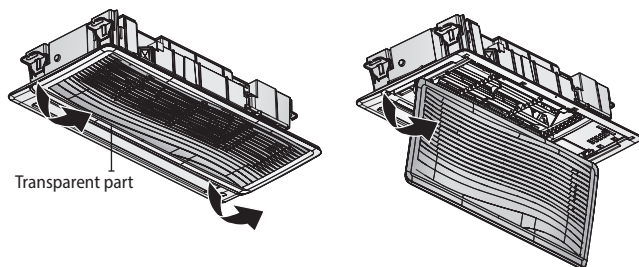
Cleaning and maintaining the air conditioner

Slim 1 way cassette

1. Open the grille.

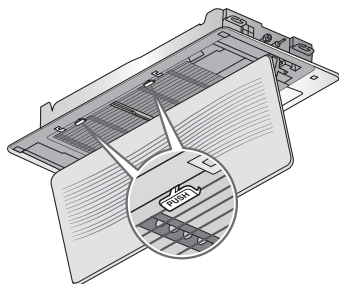
Pull the transparent part to open the grille. Do not detach the grille since the filter can be detached while the grille is connected.

PC1NWSMAN/PC1BWSMAN



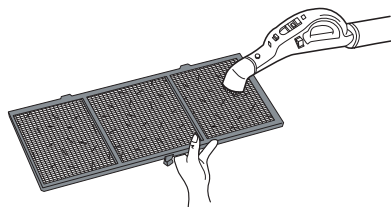
2. Detach the air filter.

Pull the filter handle to detach the filter.



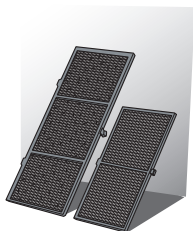
3. Remove the dust on the filter with a vacuum cleaner or brush.

When there is too much dust on the filter, clean the filter softly with the tepid water in which a neutral detergent is dissolved. If you rub the filter together to wash it, the filter may get damaged.



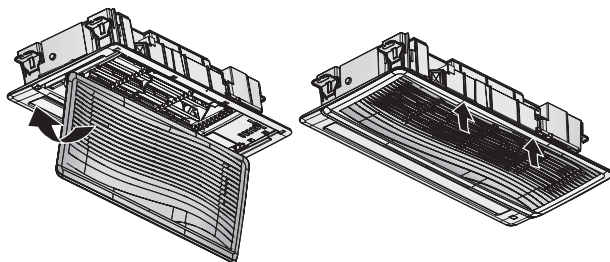
4. Dry the filter completely in the shade.

When drying the air filter, make sure the filter is not exposed to direct sunlight. Otherwise, the form of the air filter may be changed.



5. Assemble the filter back and then close the grille.

If the center of the grille is not closed tightly, press the center with hands to close the grille completely.



CAUTION

- When the indoor unit is used without the air filter, the indoor unit may get damaged with dust.
- When opening the grille, you should grip the grille until it hangs safely. Otherwise, the grille may fall down, which may cause an injury.
- The grille is connected to the panel. Do not forcibly detach the grille. If the connection structure is broken, the grille may fall down, which may cause an injury.



NOTE

- Clean the air filter once in every 2 weeks. However, the cleaning period may differ depending on the hours of filter use and service environment. Therefore, clean the filter every week in a dusty area.
- If the filter reset indicator is turned on on the display of the indoor unit, check and clean the filter if it is dirty.

Cleaning and maintaining the air conditioner

2 way cassette

1. Open the front grille.

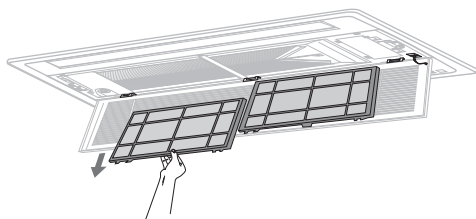
Push the [▼] tabs located in 3 places to unlock the hook on the front grille.

The grille automatically drops. Two safety clips are mounted to the inside front grille to prevent dropping downward.



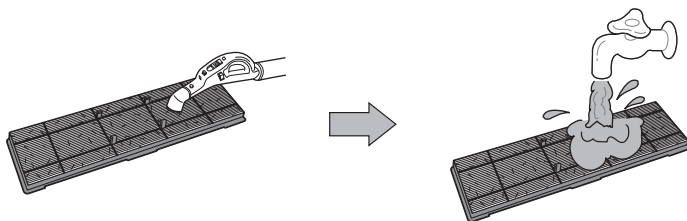
2. Pull out the Air filter.

Grab the Air filter and lift it upwards while pushing slightly, and then pull the Air filter forward.



When cleaning the filter you do not need to detach the grille at all times. If you want to detach the front grille, see step 2 and 3 on page 18 for instructions.

3. Clean the Air filter with a vacuum cleaner or soft brush. If dust is too heavy, then rinse it with running water and dry it in a ventilated area.



- For best conditions, repeat every two weeks.
- If the Air filter dries in a confined (or humid) area, odors may generate. If it occurs, re-clean and dry it in a well-ventilated area.

4. Insert the Air filter back in its original position.

You will hear a click sound when the Air filter is properly placed.

5. Close the front grille by pushing it upward.

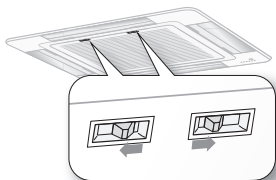


After cleaning the filter, press the Filter Reset button on the remote control for 2 seconds to reset the filter schedule. Filter sign indicator will be on for cleaning time.

4 way cassette

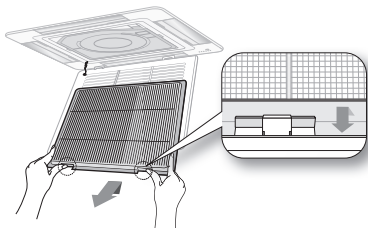
1. Push both of the tabs outwards to unlock the hook on the front grille.

The grille automatically drops. Two safety clips are mounted to the inside front grille to prevent dropping downward.



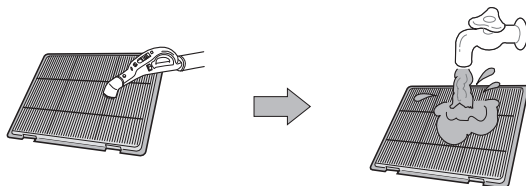
2. Pull out the Air filter.

Grab the Air filter and lift it upwards while pushing slightly, and then pull the Air filter forward.



When cleaning the filter you do not need to detach the grille at all times. If you want to detach the front grille, see step 2 and 3 on page 18 for instructions.

3. Clean the Air filter with a vacuum cleaner or soft brush. If dust is too heavy, then rinse it with running water and dry it in a ventilated area.



- For best conditions, repeat every two weeks.
- If the Air filter dries in a confined (or humid) area, odors may generate. If it occurs, re-clean and dry it in a well-ventilated area.

4. Insert the Air filter back in its original position.

You will hear a click sound when the Air filter is properly placed.

5. Close the front grille by pushing it upward.



- The illustration shown above may differ from yours depending on your model.
- After cleaning the filter, press the Filter Reset button on the remote control for 2 seconds to reset the filter schedule. Filter sign indicator will be on for cleaning time.

Cleaning and maintaining the air conditioner

Maintaining your air conditioner

If the air conditioner will not be used for an extended period of time, dry the air conditioner to maintain it in best condition.

1. Dry the air conditioner thoroughly by operating in Fan mode for 3 to 4 hours and disconnect the power plug. There may be internal damage if moisture is left in components.
2. Before using the air conditioner again, dry the inner components of the air conditioner again by running in Fan mode for 3 to 4 hours. This helps remove odors which may have generated from dampness.

Periodical checks

Refer to the following chart to maintain the air conditioner properly.

Type	Description	Monthly	Every 4 months	Once a year
Indoor unit	Clean the air filter (1)	●		
	Clean the condensate drain pan (2)			●
	Thoroughly clean the heat exchanger (2)			●
	Clean the condensate drain pipe (2)		●	
	Replace the remote control batteries (1)			●
Outdoor unit	Clean the heat exchanger on the outside of the unit (2)		●	
	Clean the heat exchanger on the inside of the unit (2)			●
	Clean the electric components with jets of air (2)			●
	Verify that all the electric components are firmly tightened (2)			●
	Clean the fan (2)			●
	Verify that all the fan assembly is firmly tightened (2)			●
	Clean the condensate drain pan (2)			●



The checks and maintenance operations described are essential to guarantee the efficiency of the air conditioner. The frequency of these operations varies according to the characteristics of the area, the amount of dust, etc.

- The described operations should be performed more frequently if the area of installation is very dusty.



These operations must always be performed by qualified personnel. For more detailed information, see the Installation Manual.

Internal protections via the unit control system

This internal protection operates if an internal fault occurs in the air conditioner.

Type	Description
Against cold air	The internal fan will be off to against cold air when the heat pump is heating.
De-ice cycle	The internal fan will be off to against cold air when the heat pump is heating.
Anti-protection of internal battery	The compressor will be off to protect internal battery when the air conditioner operates in Cool mode.
Protect compressor	The air conditioner does not start operating immediately to protect the compressor of the outdoor unit after it has been started.



NOTE

If the heat pump is operating in Heat mode, De-ice cycle is actuated to remove frost from an outdoor unit that may have deposited at low temperatures.

The internal fan is switched off automatically and restarted only after the de-ice cycle is completed.

Appendix

Troubleshooting

Refer to the following chart if the air conditioner operates abnormally. This may save time and unnecessary expenses.

PROBLEM	SOLUTION
The air conditioner does not operate immediately after it has been restarted.	<ul style="list-style-type: none">Because of the protective mechanism, the appliance does not start operating immediately to keep the unit from overloading. The air conditioner will start in 3 minutes.
The air conditioner does not work at all.	<ul style="list-style-type: none">Check that the power plug is properly connected. Insert the power plug into the wall socket correctly.Check if the circuit breaker is switched off.Check if there is a power failure.Check your fuse. Make sure it is not blown out.
The temperature does not change.	<ul style="list-style-type: none">Check if you selected Fan mode. Press the Mode button on the remote control to select another mode.
The cool (warm) air does not come out of the air conditioner.	<ul style="list-style-type: none">Check if the set temperature is higher (lower) than the current temperature. Press the Temperature button on the remote control to change the set temperature. Press the Temperature button to decrease or increase the temperature.Check if the air filter is blocked by dirt. Clean the air filter every two weeks.

PROBLEM	SOLUTION
<p>The cool (warm) air does not come out of the air conditioner.</p>	<ul style="list-style-type: none"> • Check if the air conditioner has just been turned on. If so, wait 3 minutes. Cool air does not come out to protect the compressor of the outdoor unit. • Check if the air conditioner is installed in a place with a direct exposure to sunlight. Hang curtains on windows to boost cooling efficiency. • Check if the cover or any obstacle is not near the outdoor unit. • Check if the refrigerant pipe is too long. • Check if the air conditioner is only available in Cool mode. • Check if the remote control is only available for cooling model.
<p>The fan speed does not change.</p>	<ul style="list-style-type: none"> • Check if you selected Auto or Dry mode. The air conditioner automatically adjusts the fan speed to Auto in Auto/Dry mode.
<p>Timer function does not set.</p>	<ul style="list-style-type: none"> • Check if you press the Power button on the remote control after you have set the time.
<p>Odors permeate in the room during operation.</p>	<ul style="list-style-type: none"> • Check if the appliance is running in a smoky area or if there is a smell entering from outside. Operate the air conditioner in Fan mode or open the windows to air out the room.

Appendix

PROBLEM	SOLUTION
The air conditioner makes a bubbling sound.	<ul style="list-style-type: none">• A bubbling sound may be heard when the refrigerant is circulating through the compressor. Let the air conditioner operate in a selected mode.• When you press the Power button on the remote control, noise may be heard from the drain pump inside the air conditioner.
Water is dripping from the air flow blades.	<ul style="list-style-type: none">• Check if the air conditioner has been cooling for an extended period of time with the air flow blades pointed downwards. Condensation may generate due to the difference in temperature.
Remote control is not working.	<ul style="list-style-type: none">• Check if your batteries are depleted.• Make sure batteries are correctly installed.• Make sure nothing is blocking your remote control sensor.• Check that there are strong lighting apparatus near the air conditioner. Strong light which comes from fluorescent bulbs or neon signs may interrupt the electric waves.
The air conditioner does not turn on or off with the wired remote control.	<ul style="list-style-type: none">• Check if you set the wired remote control for group control.

PROBLEM	SOLUTION
The wired remote control does not operate.	<ul style="list-style-type: none"> Check if TEST indicator is displayed on the wired remote control. If so, turn off the unit and switch off the circuit breaker. Call your nearest contact center.
The indicators of the digital display flashes.	<ul style="list-style-type: none"> Press the Power button on the remote control to turn the unit off and switch the circuit breaker off. Then, switch it on again.

OPERATION RANGES

The table below indicates the temperature and humidity ranges the air conditioner can be operated within. Refer to the table for efficient use.

MODE	Indoor temperature	Outdoor temperature	Indoor humidity
Cooling	18~32 °C	-5~48 °C	80 % or less
Heating	27 °C or less	-20~24 °C	-
Drying	18~32 °C	-5~48 °C	-

Technical Specifications

MODEL		AM022FN1DEH/TK		AM028FN1DEH/TK		AM036FN1DEH/TK		AM056JN1DEH/TK		AM071JN1DEH/TK	
CLIMATES CLASS		T1	T3	T1	T3	T1	T3	T1	T3	T1	T3
RATED VOLTAGE & FREQUENCY		220 - 240 V~ 50 Hz									
RATED CURRENT	COOLING	0.20 A	0.20 A	0.23 A	0.23 A	0.25 A	0.25 A	0.28 A	0.28 A	0.40 A	0.40 A
	HEATING(H1)	0.20 A		0.23 A		0.25 A		0.28 A		0.40 A	
RATED POWER INPUT	COOLING	40 W	40 W	45 W	45 W	50 W	50 W	55 W	55 W	80 W	80 W
	HEATING(H1)	40 W		45 W		50 W		55 W		80 W	
EER	COOLING	-	-	-	-	-	-	-	-	-	-
	HEATING(H1)	-		-		-		-		-	
NET WEIGHT		10.0 kg						14.5 kg			
DIMENSIONS OF THE UNIT [WxHxD]		970 x 410 x 135						1200 x 450 x 138			
COUNTRY OF ORIGIN		MADE IN KOREA									

MODEL		AM056FN2DEH/TK		AM071FN2DEH/TK		AM045FN4DEH/TK		AM056FN4DEH/TK		AM071FN4DEH/TK	
CLIMATES CLASS		T1	T3	T1	T3	T1	T3	T1	T3	T1	T3
RATED VOLTAGE & FREQUENCY		220 - 240 V~ 50 Hz									
RATED CURRENT	COOLING	0.38 A	0.38 A	0.40 A	0.40 A	0.22 A	0.22 A	0.22 A	0.22 A	0.31 A	0.31 A
	HEATING(H1)	0.38 A		0.40 A		0.22 A		0.22 A		0.31 A	
RATED POWER INPUT	COOLING	70 W	70 W	75 W	75 W	32 W	32 W	32 W	32 W	45 W	45 W
	HEATING(H1)	70 W		75 W		32 W		32 W		45 W	
EER	COOLING	-	-	-	-	-	-	-	-	-	-
	HEATING(H1)	-		-		-		-		-	
NET WEIGHT		20.0 kg		21.0 kg		15.0 kg					
DIMENSIONS OF THE UNIT [WxHxD]		890 x 230 x 575				840 x 204 x 840					
COUNTRY OF ORIGIN		MADE IN KOREA									

MODEL		AM090FN4DEH/TK		AM112FN4DEH/TK		AM128FN4DEH/TK		AM140FN4DEH/TK	
CLIMATES CLASS		T1	T3	T1	T3	T1	T3	T1	T3
RATED VOLTAGE & FREQUENCY		220 - 240 V~ 50 Hz							
RATED CURRENT	COOLING	0.43 A	0.43 A	0.55 A	0.55 A	0.51 A	0.51 A	0.62 A	0.62 A
	HEATING(H1)	0.43 A		0.55 A		0.51 A		0.62 A	
RATED POWER INPUT	COOLING	62 W	62 W	78 W	78 W	73 W	73 W	89 W	89 W
	HEATING(H1)	62 W		78 W		73 W		89 W	
EER	COOLING	-	-	-	-	-	-	-	-
	HEATING(H1)	-		-		-		-	
NET WEIGHT		15.0 kg		17.0 kg		19.0 kg			
DIMENSIONS OF THE UNIT [WxHxD]		840 x 204 x 840		840 x 246 x 840		840 x 288 x 840			
COUNTRY OF ORIGIN		MADE IN KOREA							

SAMSUNG

QUESTIONS OR COMMENTS?

COUNTRY	CALL	OR VISIT US ONLINE AT
U.A.E	800-SAMSUNG (800 - 726 7864)	www.samsung.com/ae/support (English) www.samsung.com/ae_ar/support (Arabic)
OMAN	800-SAMSUNG (800 - 726 7864)	
KUWAIT	183-CALL (183-2255)	
BAHRAIN	8000-GSAM (8000-4726)	
QATAR	800-CALL (800-2255)	
EGYPT	08000-7267864 16580	www.samsung.com/eg/support
ALGERIA	3004	www.samsung.com/n_africa/support
PAKISTAN	0800-Samsung (72678)	www.samsung.com/pk/support
TUNISIA	80 1000 12	www.samsung.com/n_africa/support
JORDAN	0800-22273 06 5777444	www.samsung.com/levant
SYRIA	962 5777444	
Lebanon	961 1484 999	
Iraq	964 77 261 72220 964 75 118 92525	
IRAN	021-8255	www.samsung.com/iran/support
MOROCCO	080 100 22 55	www.samsung.com/n_africa/support
SAUDI ARABIA	800 247 3457 (800 24/7 HELP)	www.samsung.com/sa/home www.samsung.com/sa_en
TURKEY	444 77 11	www.samsung.com/tr/support
RUSSIA	8-800-555-55-55 (VIP care 8-800-555-55-88)	www.samsung.com/ru/support
GEORGIA	0-800-555-555	www.samsung.com/support
ARMENIA	0-800-05-555	www.samsung.com/support
AZERBAIJAN	0-88-555-55-55	www.samsung.com/support
KAZAKHSTAN	8-10-800-500-55-500 (GSM: 7799, VIP care 7700)	www.samsung.com/kz_ru/support
UZBEKISTAN	00-800-500-55-500 (GSM: 7799)	www.samsung.com/support
KYRGYZSTAN	00-800-500-55-500 (GSM: 9977)	www.samsung.com/support
TAJIKISTAN	8-10-800-500-55-500	www.samsung.com/support
MONGOLIA	+7-495-363-17-00	www.samsung.com/support
UKRAINE	0-800-502-000	www.samsung.com/ua/support (Ukrainian) www.samsung.com/ua_ru/support (Russian)
BELARUS	810-800-500-55-500	www.samsung.com/support
MOLDOVA	0-800-614-40	www.samsung.com/support