

SAMSUNG

Samsung Multiroom

User Manual

imagine the possibilities

Thank you for purchasing this Samsung speaker.
To receive more complete service,
please register your speaker at
www.samsung.com/register

Contents

CONNECTING TO THE WI-FI NETWORK

| | |
|---|----|
| Preparing connection | 4 |
| Installing the Samsung Multiroom App ... | 4 |
| Accessing the Samsung Multiroom App. | 4 |
| Connecting to Wi-Fi..... | 5 |
| Connecting to Wi-Fi automatically (Android/iOS) | 5 |
| Connecting to Wi-Fi manually (Android).. | 7 |
| Connecting to Wi-Fi manually (iOS) | 9 |
| Connecting with a LAN Cable (Soundbar only) | 12 |
| Connecting with a HUB (Not Included) .. | 12 |
| Adding a HUB..... | 15 |
| Adding additional speaker(s)..... | 16 |

USING THE SAMSUNG MULTIROOM APP

| | |
|--|----|
| App at a glance | 18 |
| Playing Music | 19 |
| Playing a music file stored in the smart device..... | 19 |
| Listen to the music through the phone speaker..... | 20 |
| Listening to streaming music..... | 21 |

| | |
|--|----|
| Listening to the internet radio | 22 |
| Following a station | 23 |
| Setting Presets | 24 |
| Connecting to Bluetooth Devices ... | 25 |
| Connecting TV to the speaker | 25 |
| Connecting to TV via bluetooth (TV SoundConnect)..... | 25 |
| Connecting to TV via Wi-Fi..... | 26 |
| Listening to music from other devices in network | 26 |
| Using playback menu | 27 |
| Adjusting Equaliser and DRC | 27 |
| Managing a queue | 29 |
| Managing a playlist | 31 |
| Using the Settings menu | 33 |
| Add Speaker..... | 33 |
| Guide..... | 34 |
| Services..... | 34 |
| Device Settings | 35 |
| Clock..... | 37 |
| Support | 39 |
| Information..... | 39 |

CONNECTING MULTIPLES SPEAKERS

| | |
|-------------------------------------|----|
| Setting Groups | 40 |
| Setting the Surround Sound Mode ... | 42 |

USING MISCELLANEOUS FUNCTIONS

| | |
|--|----|
| Playing Media Content Saved in a PC ... | 44 |
| Samsung Link..... | 44 |
| Wireless Audio - Multiroom for Desktop ... | 45 |

APPENDIX

| | |
|---------------------------|----|
| Troubleshooting..... | 47 |
| Compatible speakers | 47 |

Connecting to the Wi-Fi network

Preparing connection





- 1 Requirements: Wireless Router, Smart Device
- 2 The wireless router should be connected to the Internet.
- 3 The smart device should be connected to the router via a Wi-Fi connection.

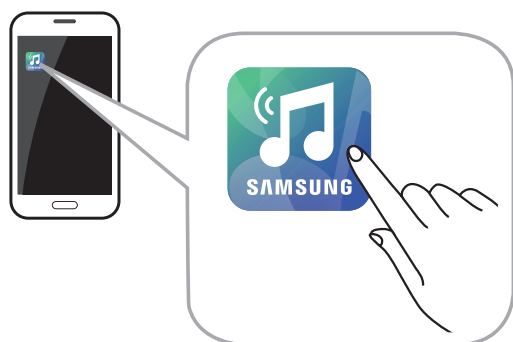
Installing the Samsung Multiroom App

To use the speaker, you must download and then install the **Samsung Multiroom** App by accessing the app through Google play or App Store.

With the **Samsung Multiroom** App installed, you can play music stored in your smart device, from connected devices and other content providers, and from Internet radio stations through the speaker.

| Android | iOS |
|---|---|
| Market search : Samsung Multiroom  | Market search : Samsung Multiroom  |

Accessing the Samsung Multiroom App



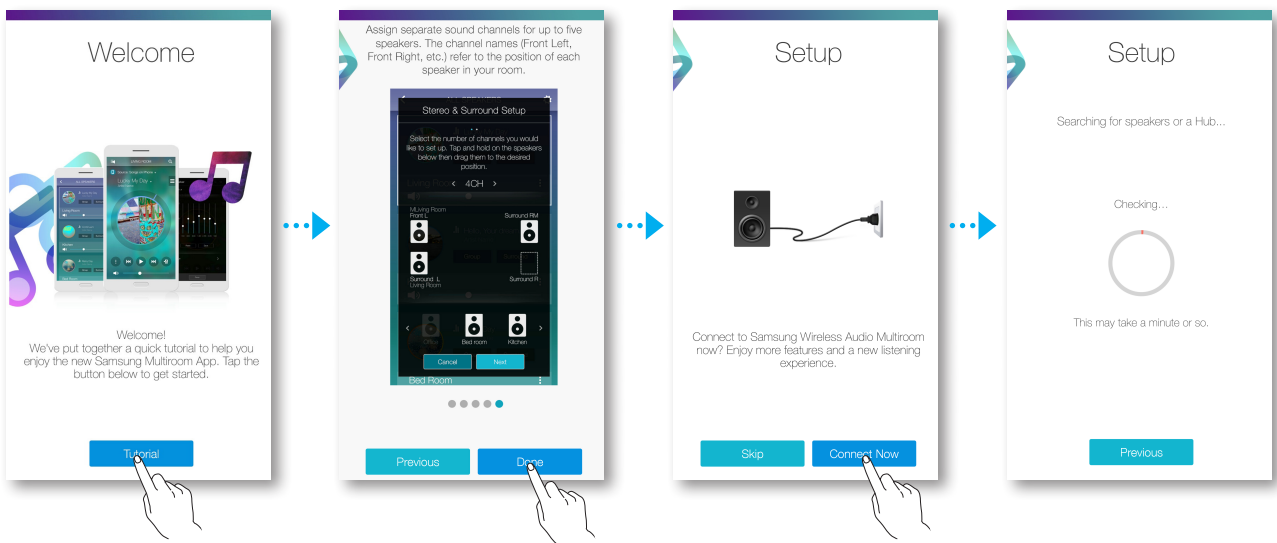
NOTE

- ✓ Please terminate the **Samsung Multiroom** App when speaker are not used because the battery of your smart device can be consumed quickly if the app is working.

Connecting to Wi-Fi

■ Connecting to Wi-Fi automatically (Android/iOS)

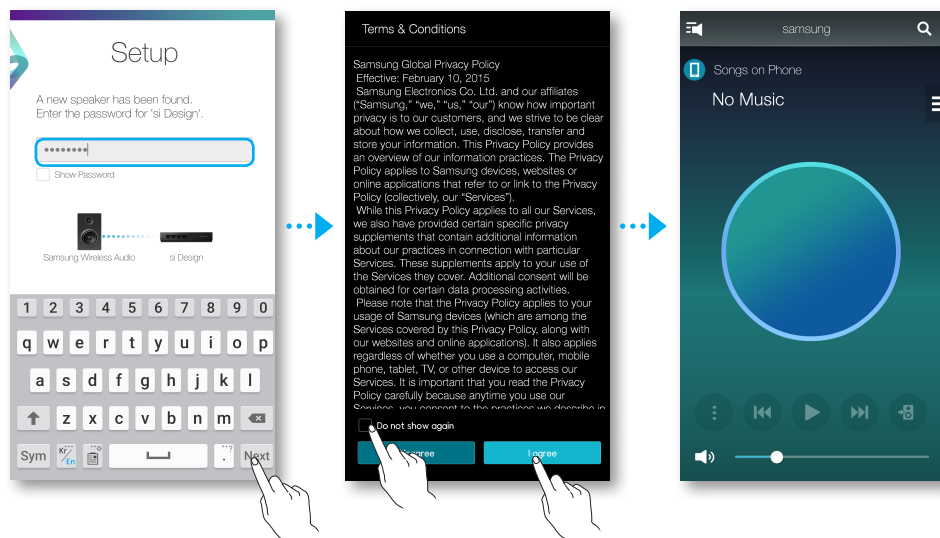
- 1 Plug the speaker into an electrical outlet.
- 2 On your Smart device, select the **Samsung Multiroom** app.
- 3 Run the **Tutorial** and then touch **Done**.
- 4 Touch **Connect Now**.
 - It searches for the device available for pairing.



- 5 Once an available device is found, it attempts to connect to the wireless network. In case of secure network, the password prompt appears on the smart device screen. Use the on-screen keyboard to enter the password.
 - Depending on the network environments, the speaker(s) may not be automatically connected. In such cases, select the **Manual**, and then proceed the next steps by referring to pages 7~11. [Click here.](#)

6 Touch **Next**.

- Network connection is completed.



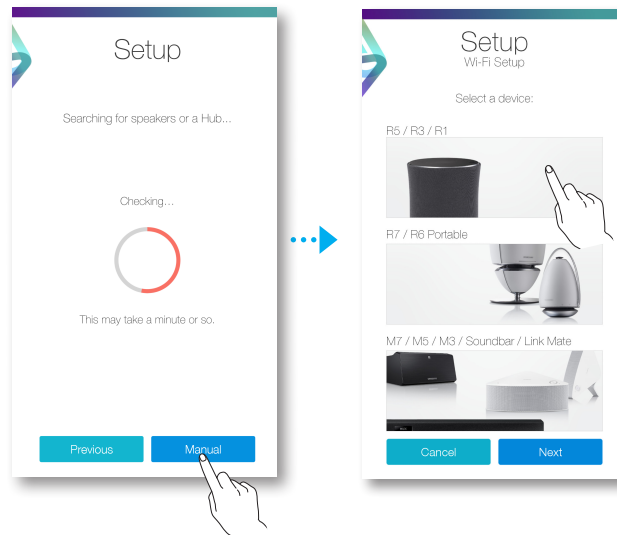
NOTES

- ✓ To connect to your wireless network safely, you must enter the valid password.
 - For connecting to the home or work wireless network, consult your service provider or the network administrator.
- ✓ If the speaker fails to connect to a network or the network connection does not work normally, move the speaker closer to the hub or router, and then try again.
- ✓ The distance between devices or obstruction and interference from other wireless devices may influence communication between the speaker and network.
- ✓ This speaker may be found by some other Wi-Fi devices. However, they are not allowed to connect to this speaker.
- ✓ Once the Wi-Fi connection is established initially, it is maintained unless the wireless router is replaced or its network settings are changed.
- ✓ In case of mobile device that supports Quick Connect function, connection with the Speaker can be easily done by the pop-up screen on your mobile device.

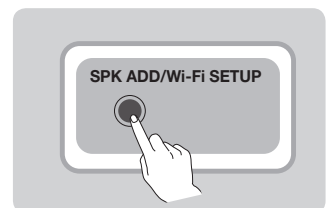
■ Connecting to Wi-Fi manually (Android)

Depending on the network environments, the speaker(s) may not be automatically connected. In that case, you can set up the speaker manually to connect to the network.

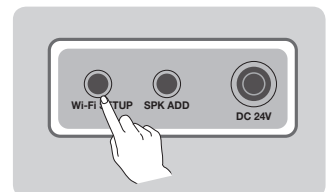
- 1 If the automatic setup fails, select the **Manual**.
- 2 Touch a device that you want to connect to.



- 3 **WAM5500/WAM3500/WAM1500** : Press and hold the **SPK ADD/Wi-Fi SETUP** button on the bottom of the speaker for more than 5 seconds to begin **Wi-Fi Setup**.

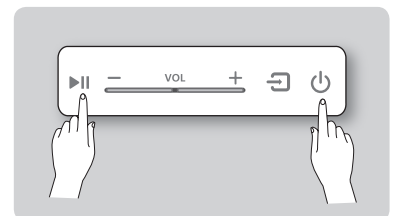


Soundbar : After turning the speaker on, press and hold the **Wi-Fi SETUP** button located at the back for 5 seconds.

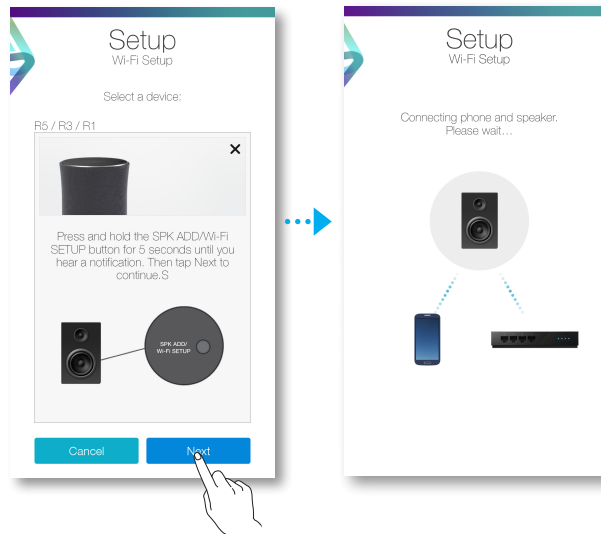


WAM7500/WAM6500 : Press and hold the **Play/Pause** and **Standby** buttons on the speaker simultaneously for more than 5 seconds to initiate **Wi-Fi Setup**.

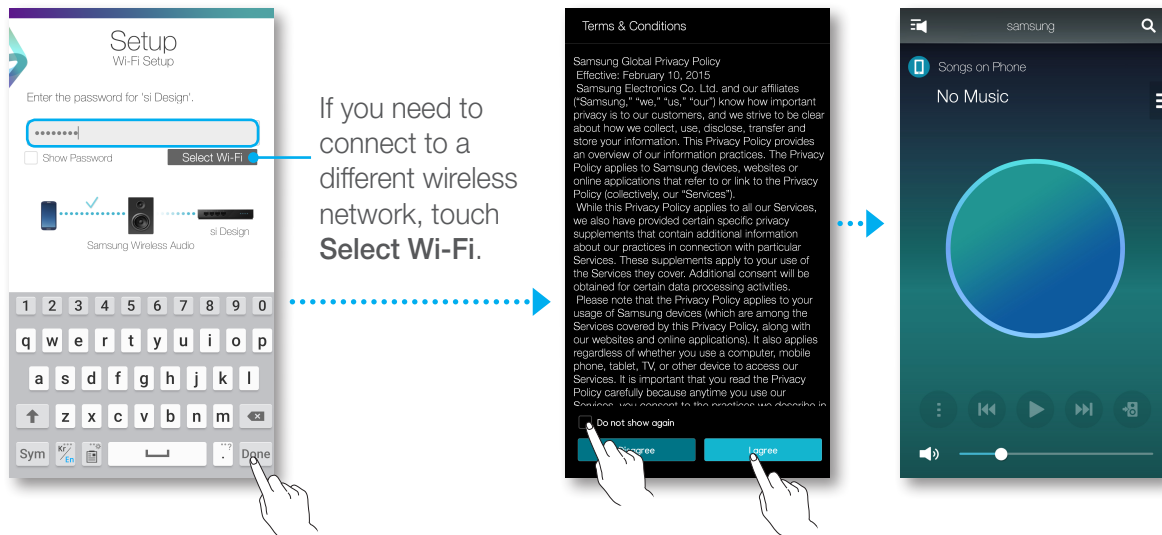
- The speaker can wait for 2 minutes in its standby mode until the Wi-Fi connection is established.



- 4 On your smart device, touch **Next**.
- It searches for the device available for pairing.

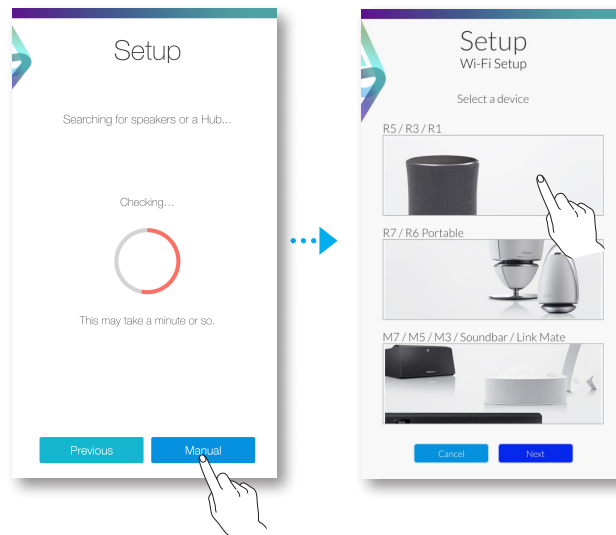


- 5 Once an available device is found, the speaker tries to connect to the newly found smart device first, then it attempts to connect to the wireless network. In case of secure network, the password prompt appears on the smart device screen. Use the on-screen keyboard to enter the password.
- 6 Touch **Done**.
- Network connection is completed.

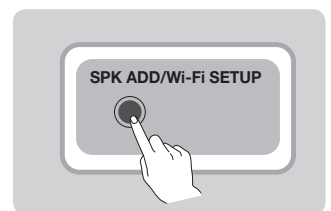


■ Connecting to Wi-Fi manually (iOS)

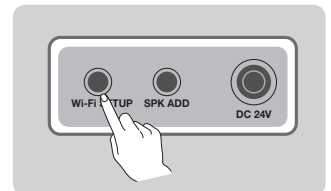
- 1 If the automatic setup fails, select the **Manual**.
- 2 Touch a device that you want to connect to.



- 3 **WAM5500/WAM3500/WAM1500** : Press and hold the **SPK ADD/Wi-Fi SETUP** button on the bottom of the speaker for more than 5 seconds to begin **Wi-Fi Setup**.

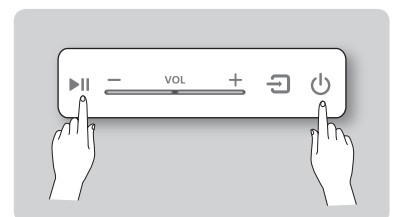


Soundbar : After turning the speaker on, press and hold the **Wi-Fi SETUP** button located at the back for 5 seconds.

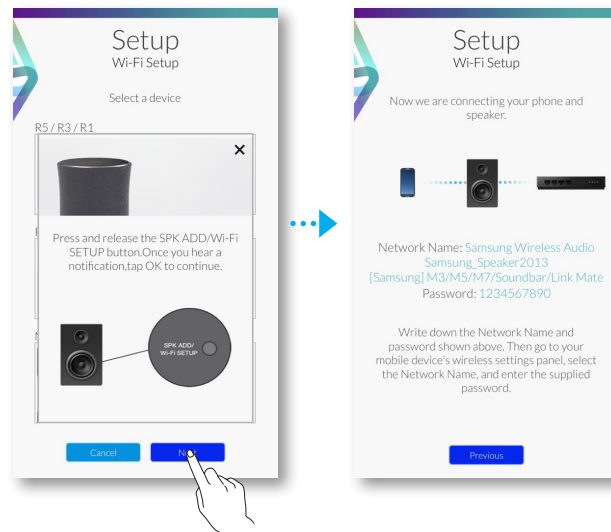


WAM7500/WAM6500 : Press and hold the **Play/Pause** and **Standby** buttons on the speaker simultaneously for more than 5 seconds to initiate **Wi-Fi Setup**.

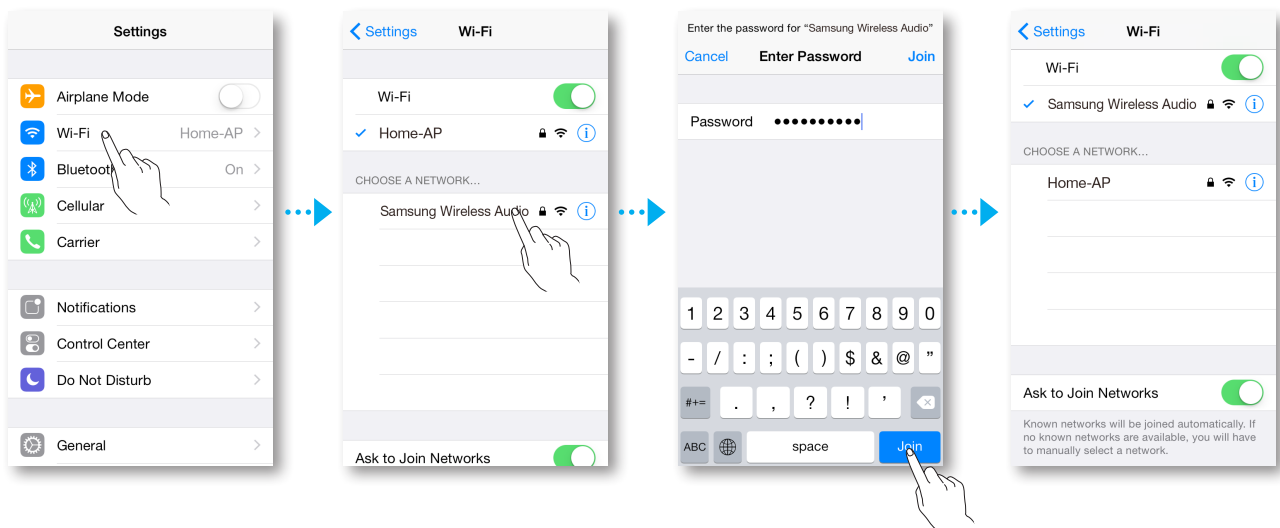
- The speaker can wait for 2 minutes in its standby mode until the Wi-Fi connection is established.



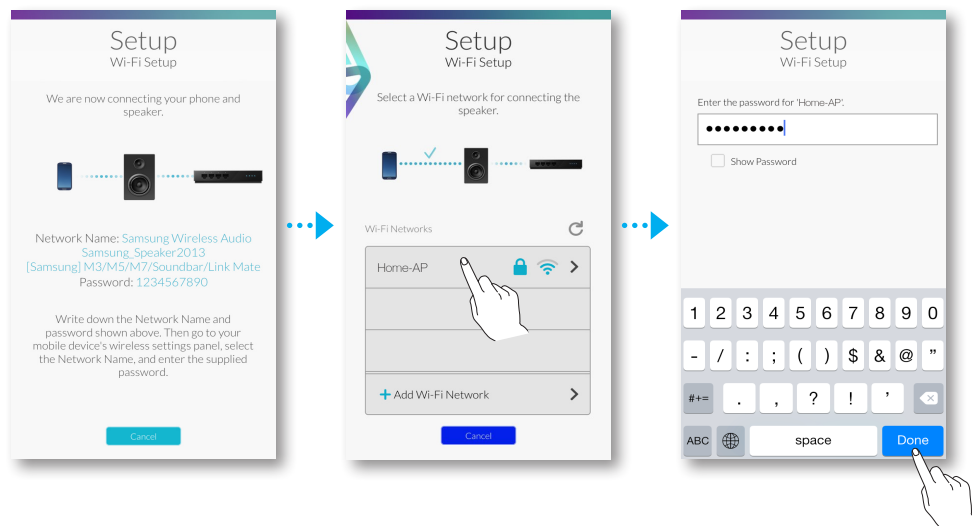
- 4 On your smart device, touch **Next**.
- It searches for the device available for pairing.



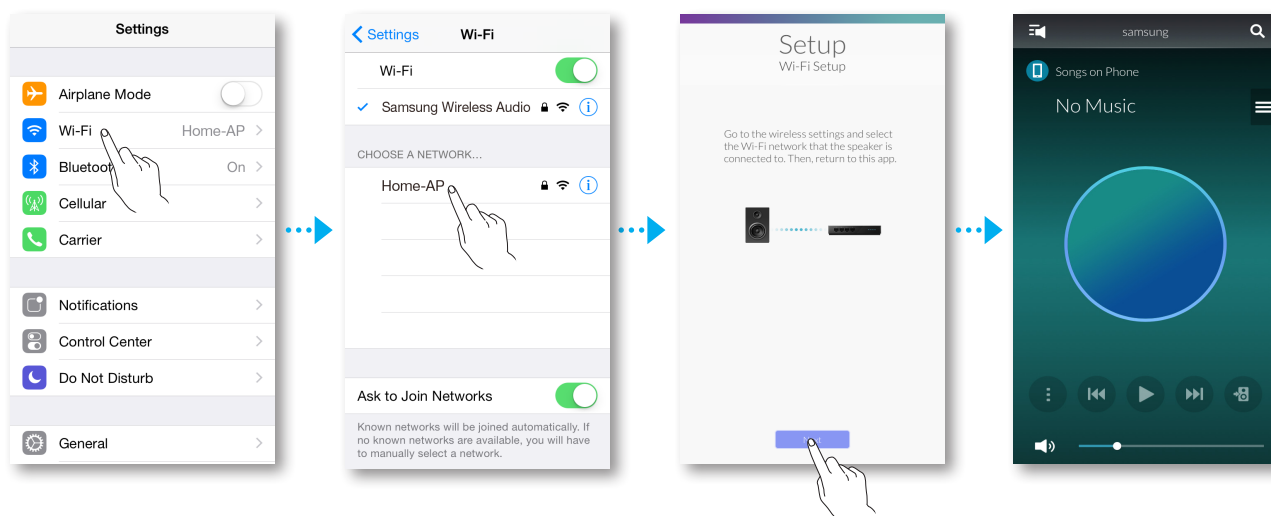
- 5 Go to **Settings** → **Wi-Fi** in iOS, and then select the **Samsung Wireless Audio**.
- 6 To connect your smart device to the speaker, use the keyboard that appears to enter your password.
- The default password is **1234567890**.
 - The speaker and the smart device are connected to each other.



- 7 Go back to the **Samsung Multiroom** app.
- 8 Select **Next**.
- 9 From the wireless network list, select the desired one for speaker connection.
- 10 In case of secure network, the password prompt appears on the smart device screen. Use the on-screen keyboard to enter the password.
 - Once you finish entering, touch **Done**. The speaker connects to the network.



- 11 Go to **Settings** → **Wi-Fi** in iOS, and then select the network which the speaker is connected to.
(The speaker and the smart device must be connected to the same network.)
 - The smart device connects to the network.
- 12 When the speaker is completely connected, touch **Next**.
- 13 Go back to the **Samsung Multiroom** app.
 - All network connections are finished.

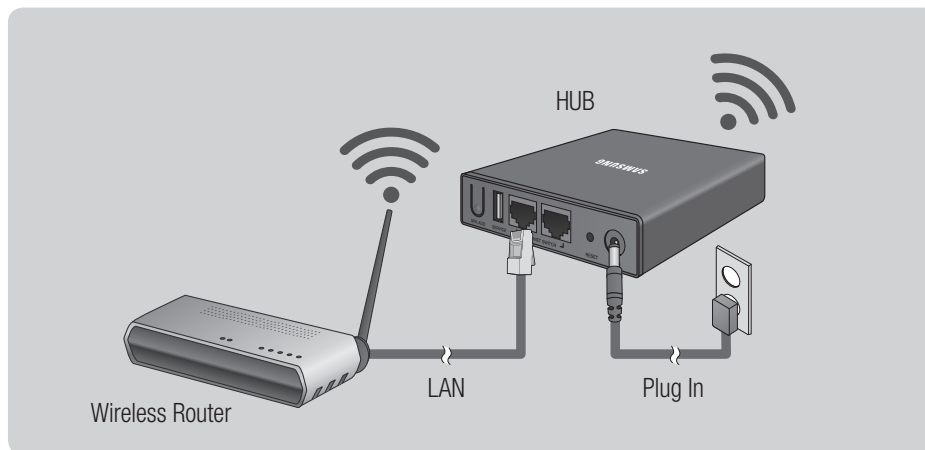


Connecting with a LAN Cable (Soundbar only)

- 1 Connect one end of the LAN cable to the speaker's **LAN** port and the other end to the wireless router.
(The speaker and smart device must be connected to the same wireless router.)
- 2 Plug the speaker into an electrical outlet.
- 3 Launch the **Samsung Multiroom** app from your smart device. Proceed with connecting your speaker.

Connecting with a HUB (Not Included)

- If the speaker fails to connect to your network or its network connection operates abnormally, place the speaker closer to the HUB or your router and try again.
- The speaker is a wireless network device. Its communications with your network may be disrupted because of the distance between it and other devices on the network, obstructions, or interference from other wireless devices.






- 1 Connect a LAN cable to the router and the **ETHERNET SWITCH** on the back of the HUB.



NOTE

- ✓ You can connect the LAN cable to any **ETHERNET SWITCH** Port on the HUB.

- 2 Attach the HUB's power cord to the power port on the rear of the HUB, and then plug the power cord into an electrical outlet.
- 3 The power () and the HUB () indicators on the HUB's front turn on.
When the pairing indicator () begins to flash, plug the speaker(s) into an outlet.
If the HUB's pairing indicator does not flash, press the **SPK ADD** button on the rear of the HUB.





NOTE

- ✓ If you are adding multiple Speakers, connect all the Speaker's to electrical outlets. If you are not connecting all the Speakers, refer to pages 16~17. [Click here.](#)

- 4 The pairing is completed if you hear the voice, "Connection is complete."
Otherwise, check if the volume is mute.

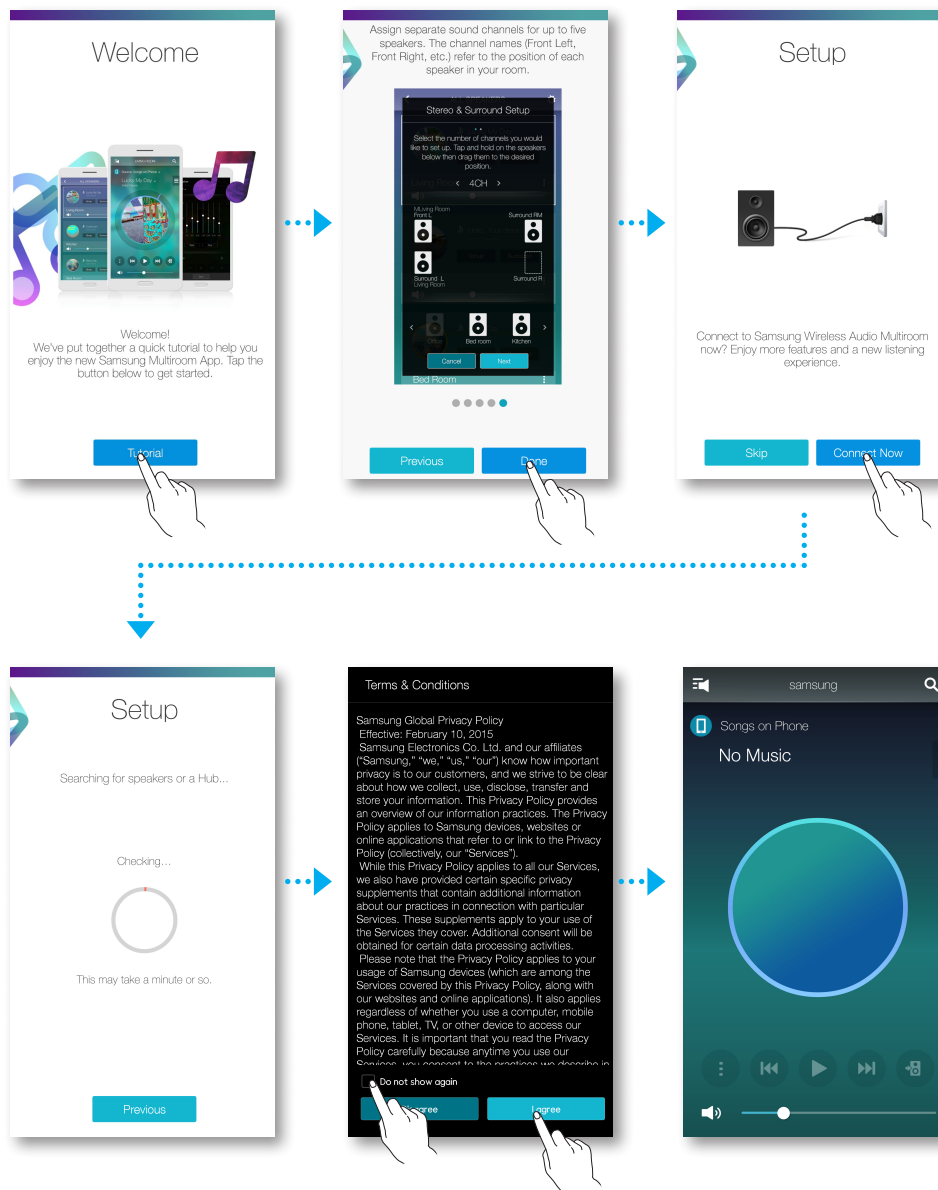


NOTES

- ✓ Place each Speaker at least 20 inches (50 cm) from the HUB when connecting them to the HUB.
- ✓ Your smart device cannot connect to the Speaker or the HUB if there is no wireless router.
- ✓ To confirm you have a proper connection, check the pairing indicator on the front of the HUB.
 - When you turn on the HUB for the first time, there is a 20 minute pairing period.
The pairing indicator () will blink for these 20 minutes or until pairing occurs. When you press the **SPK ADD** button to pair additional Speakers, the pairing period is reduced to 10 minutes. The pairing indicator () flashes for 10 minutes or until pairing occurs. Turn on the Speaker you want to pair while the pairing indicator is flashing.
 - If pairing mode is turned off, start pairing mode again by pressing the **SPK ADD** button on the rear side of the hub and restart the speaker, or press and hold the **SPK ADD/Wi-Fi SETUP** button for 1 second.
- ✓ For a proper connection, connect the HUB to your router before turning on the Speaker.
 - Connecting the Speaker to the HUB may take a few minutes.
 - There will be a brief sound when the connection is established.

- 5 Connect your smart device to your Wi-Fi network. (The HUB and the smart device should be connected to the same router.)

- 6 Download the **Samsung Multiroom** app from Google Play or the App Store.
- 7 On your smart device, select the **Samsung Multiroom** app. Setup starts.




- 8 If the automatic setup fails, run the App again.

■ Adding a HUB

An speaker and a HUB may not pair successfully if the speaker and HUB are too far apart or are on different floors.

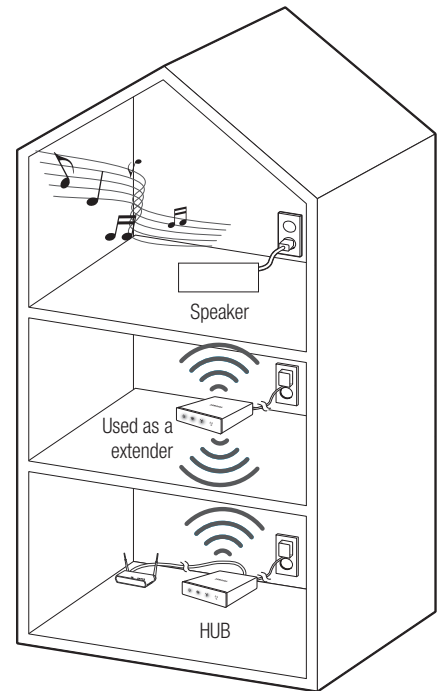
In such cases, you can link two HUBs together by setting the second HUB to Repeater mode. The additional HUB amplifies the signal and lets you pair the speaker to the closest HUB.

- 1 Set the HUB that is connected to the wireless router to Pairing mode by pressing its **SPK ADD** button for 1 second.
- 2 Plug in the new HUB you are using as an extender, and then press its **SPK ADD** button for 10 seconds.
- 3 The newly added HUB's LED indicators turn off and on, and it switches to Repeater mode.
- 4 Once the connection between the two HUBs has been established, the added HUB's () indicator stops blinking.



NOTES

- ✓ If your smart device is not connected to the wireless router with a Wi-Fi connection, the speaker will not appear on the **Samsung Multiroom** app.
- ✓ Place the HUB that is in Repeater mode in an appropriate location between the speaker and the HUB that is connected to the wireless router.
- ✓ You can set only one HUB to Repeater mode.





Relocating the speaker

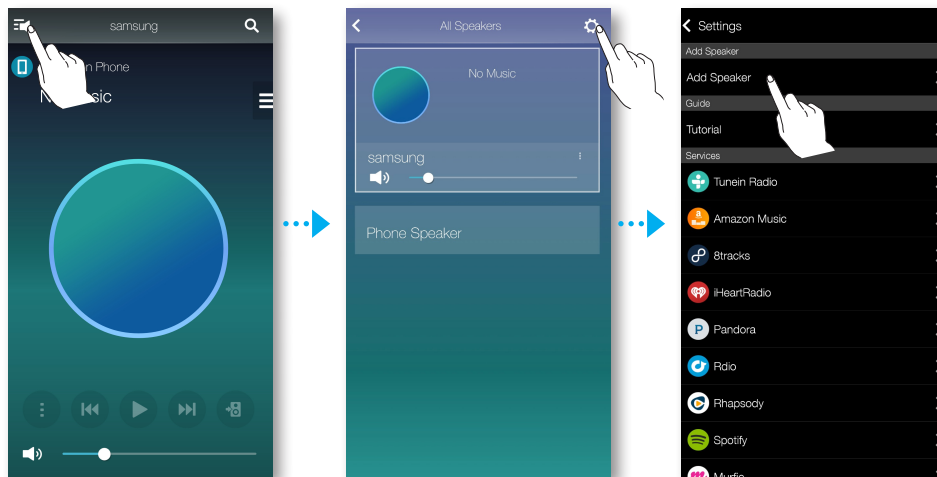
When relocating your speaker, refer to the below table.

| HUB \ Wireless router | Wireless router | |
|-----------------------|---|---|
| | If you want to connect your speaker to the current wireless router. | If you want to connect your speaker to a different wireless router. |
| Without a HUB | Turn off the speaker, relocate it and then turn it on. | Turn off the speaker, relocate it, then establish the new connection as described in the installation instructions on pages 5 through 11. Click here. |
| With a HUB | | Connect a LAN cable between the HUB and the new wireless router, turn on the HUB, and then turn on the speaker. |

Adding additional speaker(s)

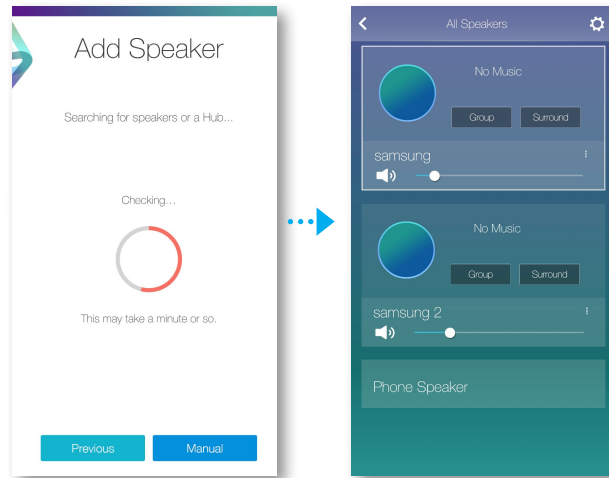
To add additional speaker(s) to an existing speaker connection, use Add Speaker function.

- 1 Connect the power cable of the speaker to be added to a wall outlet.
 - If connecting the power cable of the speaker to a wall outlet, the Wi-Fi is automatically switched into standby mode.
 - The speaker can wait for 2 minutes in its standby mode until the Wi-Fi connection is established.
- 2 Run the **Samsung Multiroom** app on your smart device.
- 3 Touch  to view the list of all speakers.
- 4 Touch .
- 5 Touch **Add Speaker**.



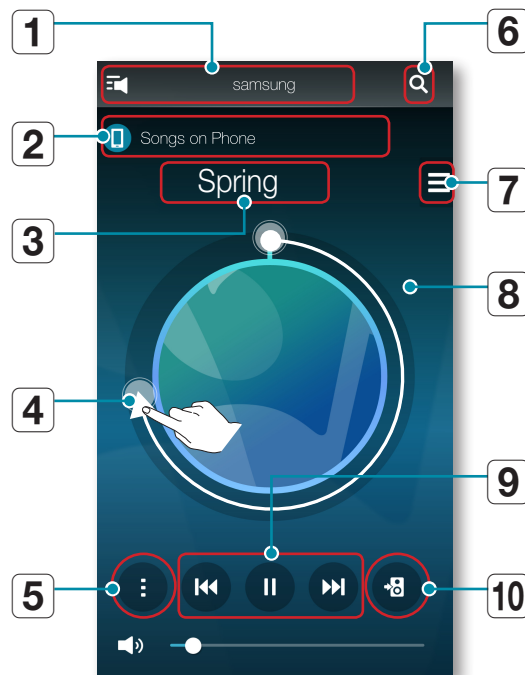
- 6 Once an available device is found, it attempts to connect to the wireless network. In case of secure network, the password prompt appears on the smart device screen. Use the onscreen keyboard to enter the password.
 - Depending on the network environments, the speaker(s) may not be automatically connected. In such cases, refer to pages 7~8 [Click here.](#) for Android, or pages 9~11 [Click here.](#) for iOS devices to continue.

- 7 The additional new speaker is completely added.



Using the Samsung Multiroom App


App at a glance

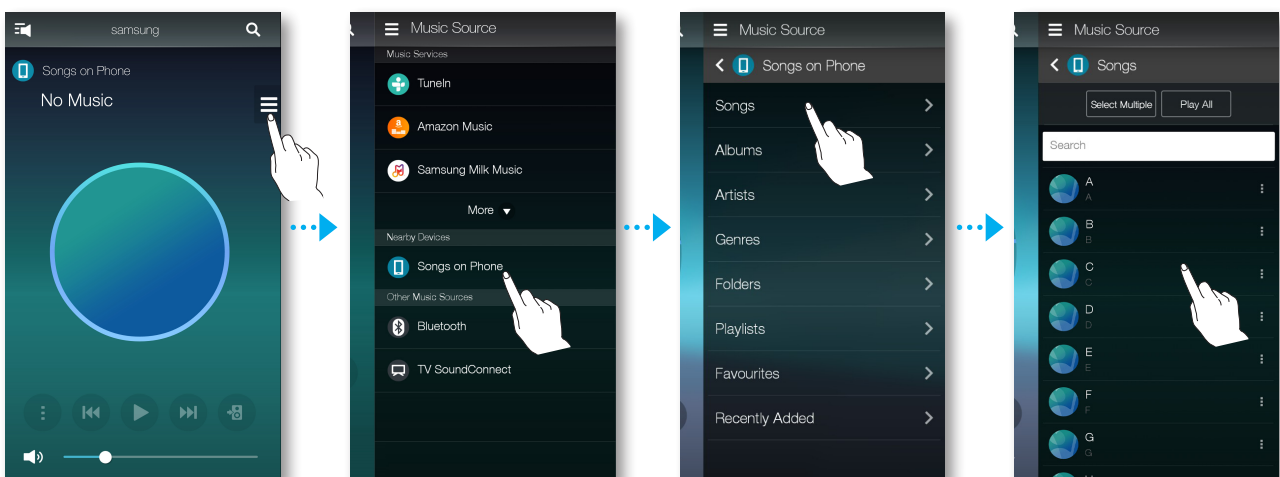


- | | |
|----|--|
| 1 | Check the full list of connected speakers to either change or setup. |
| 2 | Displays the current source. |
| 3 | Either check the queue or edit the playlist. |
| 4 | Rotate while dragging the wheel to select a music from the queue. Release the wheel to play the music. - You can select a music by turning the inside of the wheel. |
| 5 | Play menu |
| 6 | Enter a keyword to search for the music desired. |
| 7 | Change the sound source. Browse a list of songs. |
| 8 | If you slightly touch the outside of the wheel on screen, you can go to the playback bar screen to check total playback time for all the music pieces. |
| 9 | Play, Pause, or Previous/Next Song. |
| 10 | To change only the speaker of the music currently playing. |

Playing Music

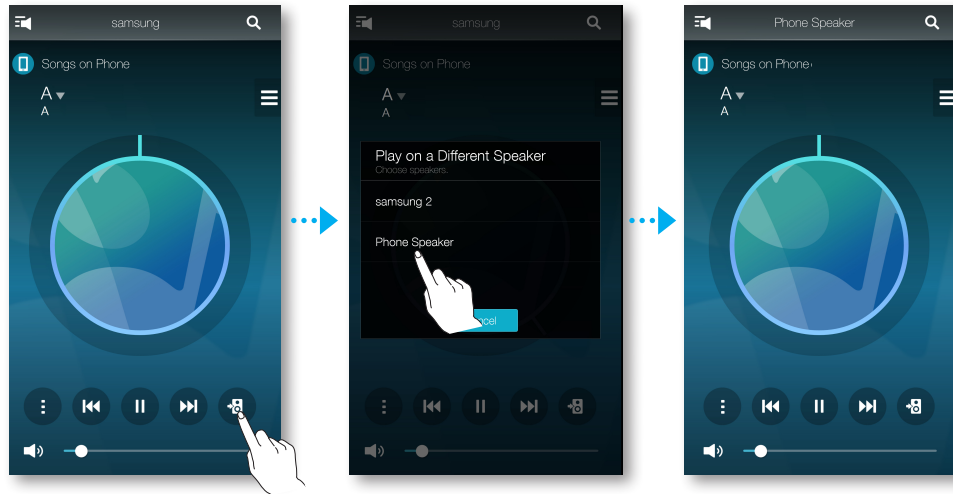
Playing a music file stored in the smart device

- 1 Touch  on the home screen, and then select **Songs on Phone** (files stored on the smart device).
- 2 Select a category.
 - **Songs** : Lists all the music files by name.
 - **Albums** : Lists all the music files by album.
 - **Artists** : Lists all the music files by artist.
 - **Genres** : Lists all the music files by genre.
 - **Folders** : Lists all the music files by stored folder.
 - **Playlists** : Lists all the music files by playlist.
 - **Favourites** : Lists all the music files marked as favourites.
- 3 After selecting a category, find and select your desired music.



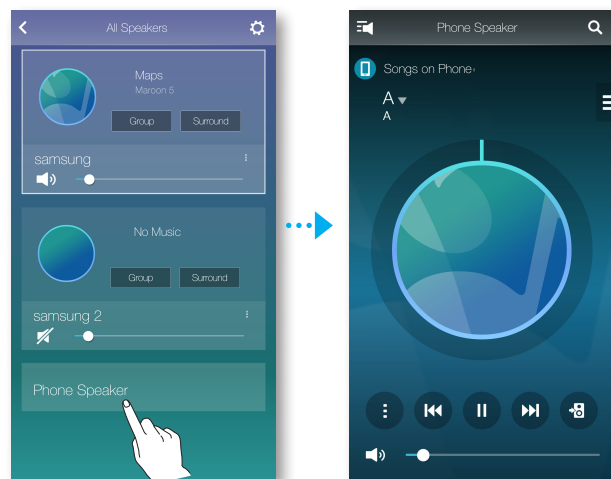
■ Listen to the music through the phone speaker

- 1 Touch  in the home screen, and then select **Phone Speaker**.



Or

- 1-1 Select **Phone Speaker** from the list of **All Speakers**.



- 2 You can listen to the music stored in your mobile phone through the **Phone Speaker**.




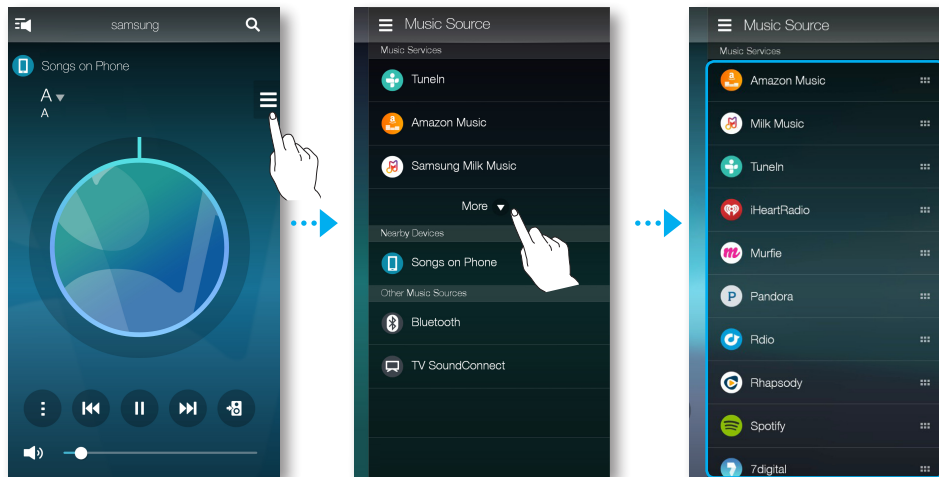
NOTES


- ✓ If Wi-Fi connection is not established, enjoy music through your **Phone Speaker**.
- ✓ You can enjoy only the music stored in your mobile phone through the **Phone Speaker**.

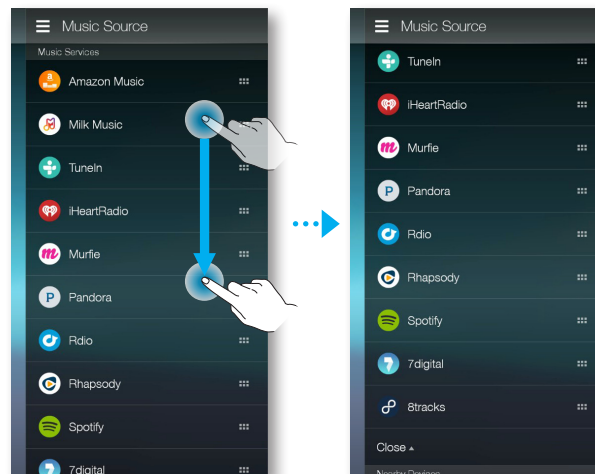
■ Listening to streaming music

You can select your desired contents service to listen to music.

- 1 Touch  on the home screen.
- 2 Select **More**.
The entire list of **Music Services** is displayed.
- 3 From the **Music Services**, select your desired service.



- 4 To change the order of your streaming services, touch and hold the  icon to the right of a service, and then drag it up or down to change its position.




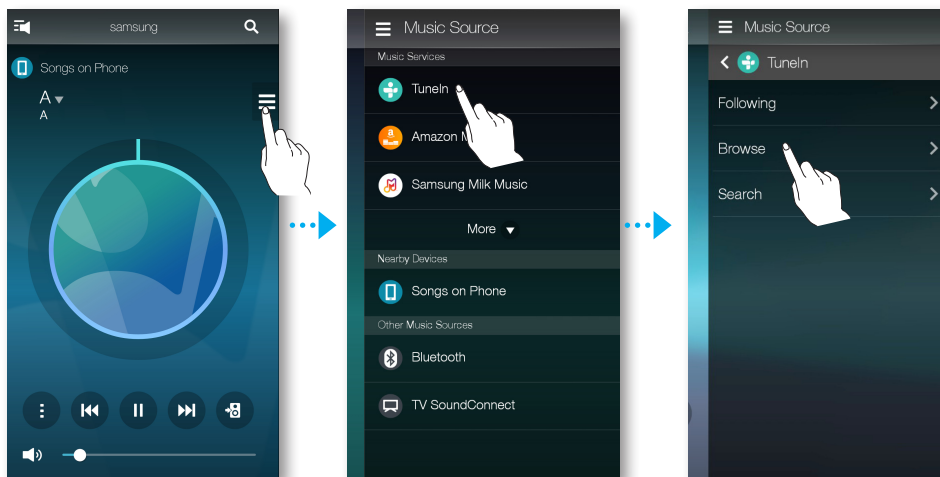


NOTES

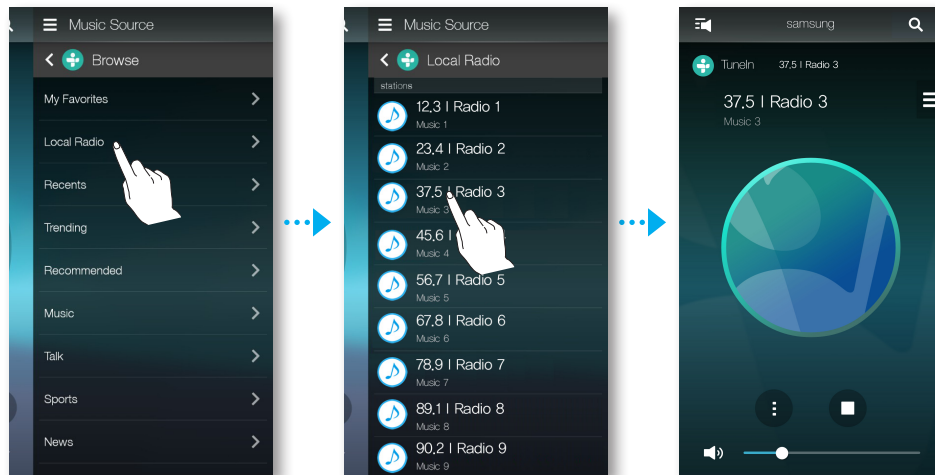
- ✓ Depending on your region or manufacturer, supported content services may differ.
- ✓ Some music services may require you to sign up for a membership or log in.
- ✓ You may not subscribe to a service using your smart device.
To use a for-pay service, first subscribe to the service through your computer.
- ✓ Some TuneIn radio channels may be restricted according to their site policy.
- ✓ Supported music service may be added or deleted according to corresponding policy.

Listening to the internet radio

- 1 Touch  on the home screen.
- 2 Select **TuneIn**.
- 3 Select your desired category.
 - **Following** : Shows the list of stations added to the preset list or marked as you are following. By default, 3 radio stations are displayed in the preset list.
 - **Browse** : Lists all supported Internet radio stations.
 - **Search** : Allows you to search for a desired internet radio station using keypad input.




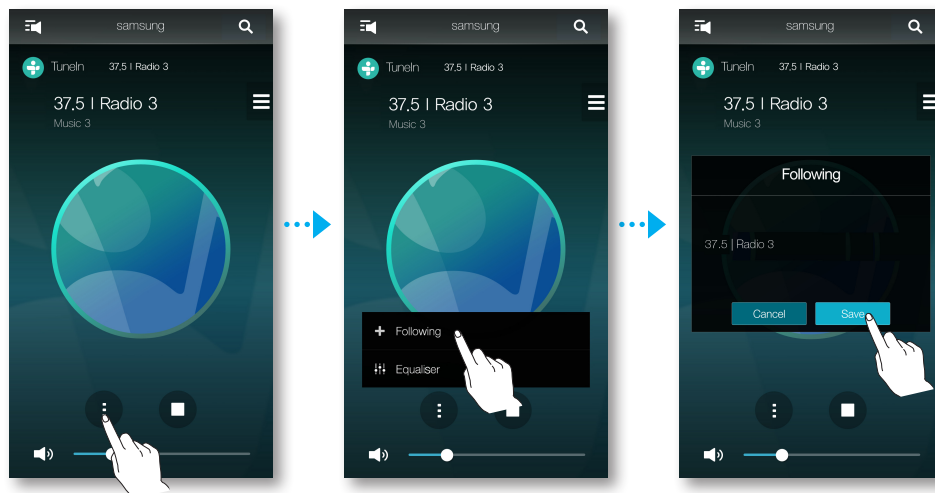
4 Find and select a station.



Following a station


You can add a channel to the **Following** list.

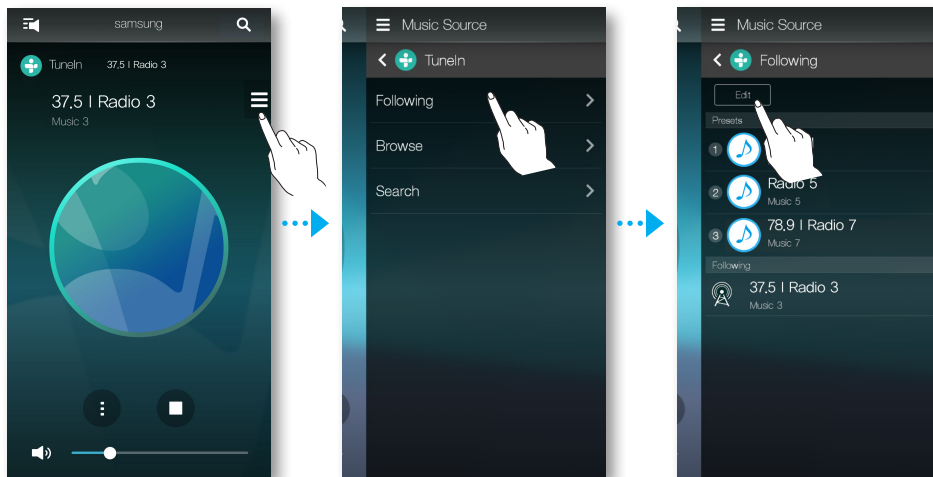
- 1 Select the desired channel.
- 2 Touch  to display a popup menu, and then select **+ Following**.
- 3 Touch **Save**.
 - The channel you are currently listening to is added to the **Following** list.



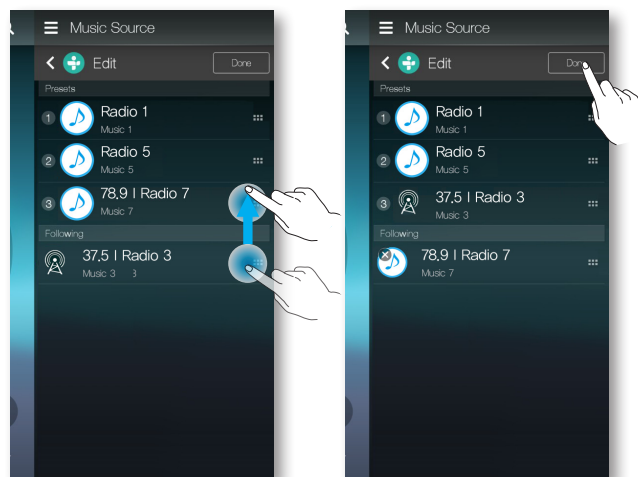
■ Setting Presets

You can add the internet radio channel you are following into the preset list, or rearrange the displaying order in the list.

- 1 Touch , and then touch **Following**.
- 2 Touch **Edit**.



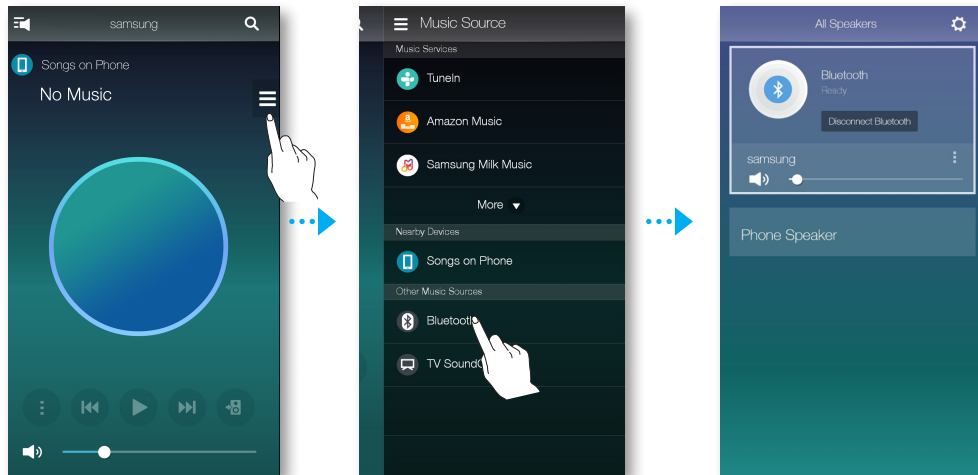
- 3 Drag the desired channel from the **Following** to the **Presets**.
- 4 To finish editing, touch **Done**.



Connecting to Bluetooth Devices

You can connect the speaker to a Bluetooth device to enjoy the music stored in your Bluetooth device.

- 1 Touch  on the home screen, and then select **Bluetooth**.



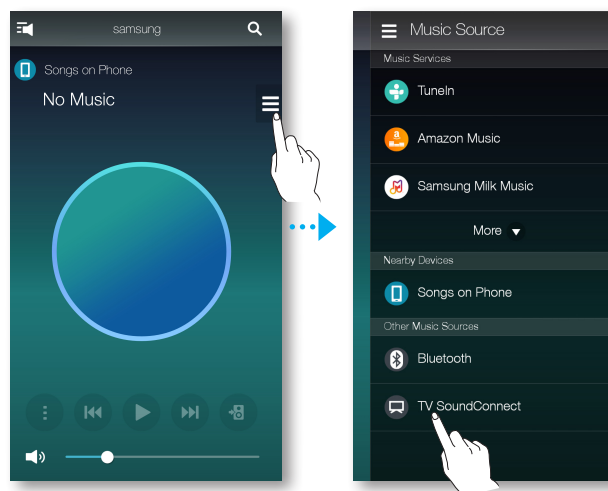
- 2 The Bluetooth connection between the smart device and the Speaker is made.

Connecting TV to the speaker

Connecting to TV via bluetooth (TV SoundConnect)

TV SoundConnect function allows you to conveniently connect Samsung TV to external speaker(s) wirelessly and enjoy the TV sound.

- 1 Touch  on the home screen, and then select **TV SoundConnect**.




- 2 A message asking whether to proceed with Bluetooth pairing appears.

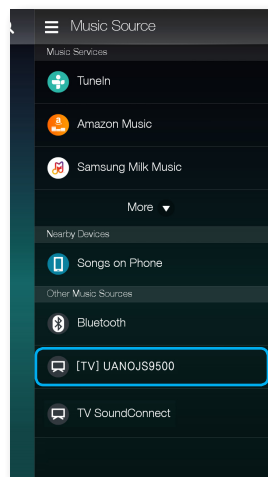


NOTE

- ✓ Set **Add New Device** to **On** in the TV's TV SoundConnect Settings menu. (Refer to the TV's user manual for details.)
- 3 When a message appears to check whether to establish Bluetooth pairing or not, select **Yes**. The speaker is paired to the TV.

■ Connecting to TV via Wi-Fi

- 1 Set the TV and speaker to the same Wi-Fi network.
- 2 Touch  on the app's Home screen, and then select the TV you want to connect to from the **Other Music Sources** list.




- 3 A message appears to ask if you want to perform network pairing process to TV.
- 4 Select **Yes** to connect TV to the speaker.
- 5 You can enjoy music on TV through the speaker.


■ Listening to music from other devices in network

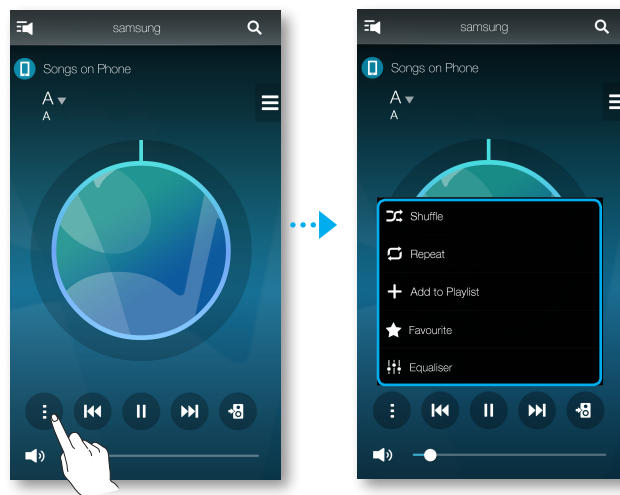
You can listen to music stored on another device that is connected to the same network. You can share music stored in your PC connected smart devices.

For details, refer to "**Wireless Audio - Multiroom for Desktop**" on pages 45~46. [Click here.](#)

- 1 Touch  on the home screen.
- 2 From the **Nearby Devices**, select the desired device.
- 3 You can play music files stored in your selected device through the speaker.

Using playback menu


- 1 Touch .
- 2 When a popup menu appears, select your desired function.
 - **Shuffle** : It randomly plays back music files from the standby list.
 - **Repeat** : It repeats the current music file or all the music files from the standby list.
 - **Add to Playlist** : Creates a new playlist or adds currently playing music into the current playlist.
 - **Favourite** : Adds the currently playing music file to the favourites list.
 - **Equaliser** : You can suitably adjust the volume of music currently playing by frequency depending on the genre, preference and place.



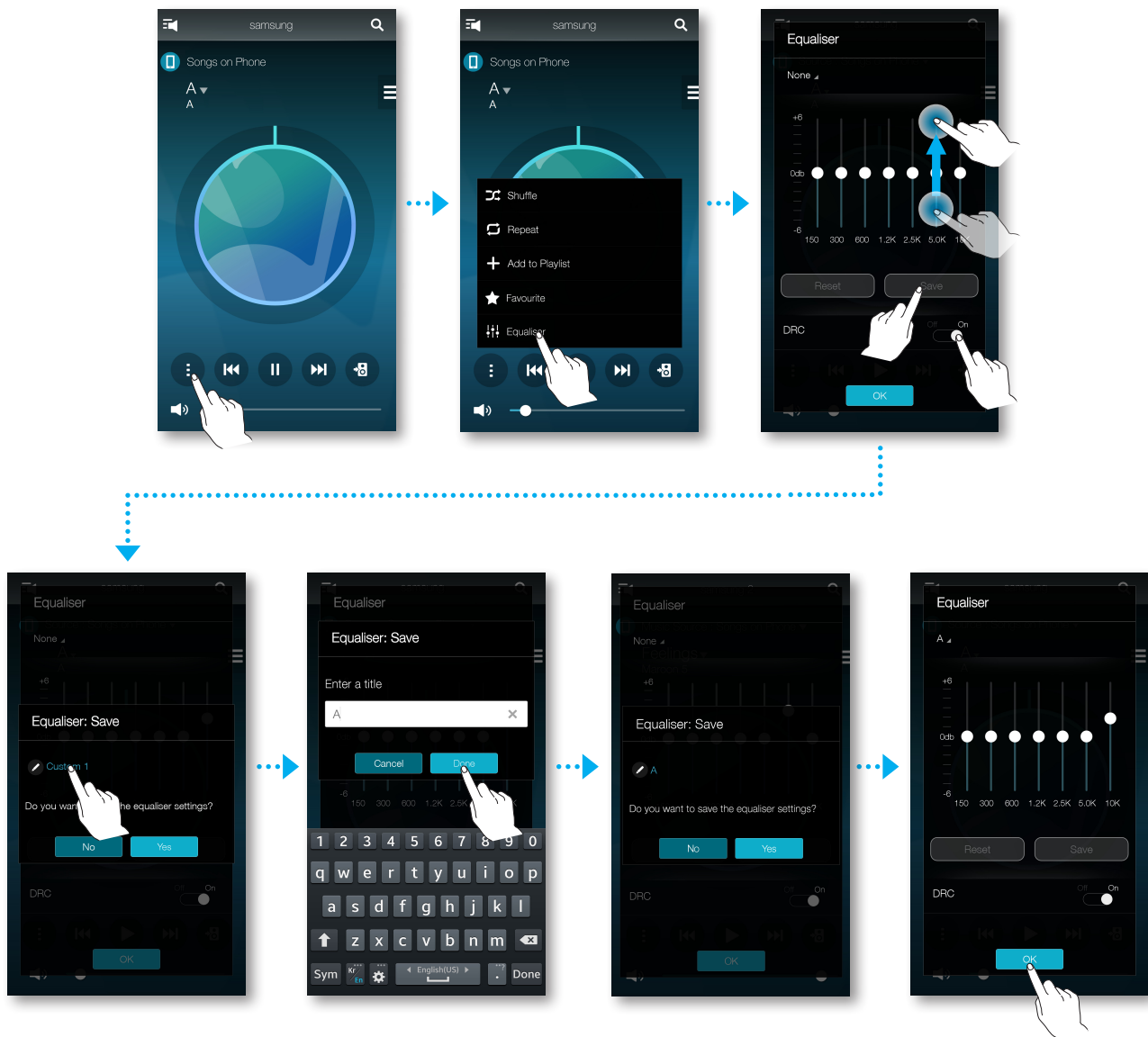
Adjusting Equaliser and DRC

You can select one of the presets provided by default in the Equaliser option or create your own settings by adjusting the frequencies manually.

In addition, set **DRC** to **On** to change volume smoothly. If the volume is turned down, you can listen to the quiet and gentle voice clearly.

- 1 Touch .
- 2 When a popup menu appears, touch **Equaliser**.
- 3 To adjust the bass or treble frequency ranges, drag the slider up or down. Set **DRC**, and then touch **Save**.

- 4 Touch **Custom**, and then enter a name. Touch **Done**.
- 5 Touch **Yes**, and then select **OK**.





NOTE

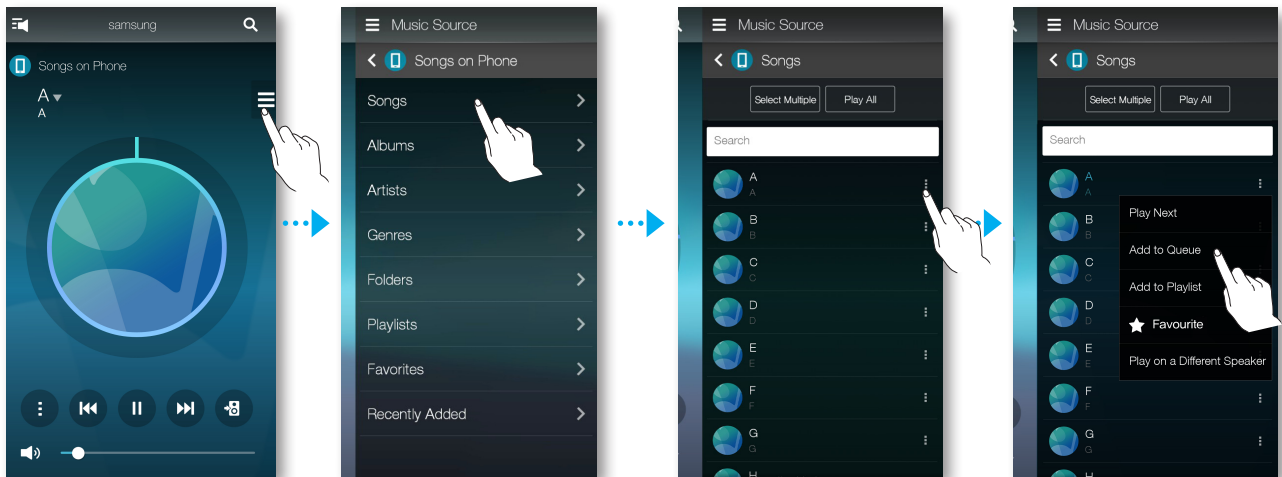
✓ The function is not available in the **Surround** mode.

■ Managing a queue

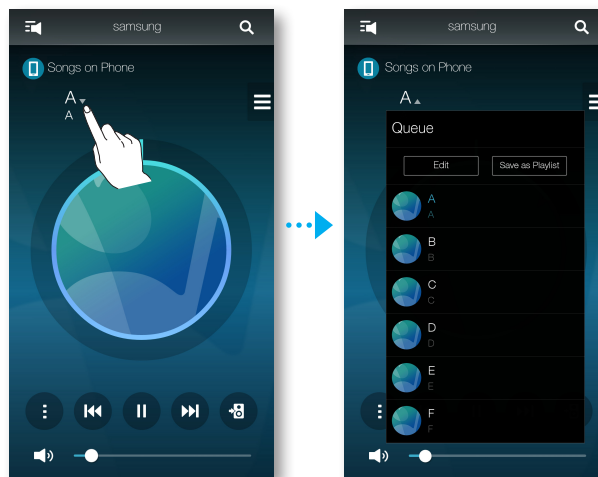
■ Adding music to the queue

You can add new music to the current music list or edit the music list.

- 1 Touch , and then select **Songs**.
- 2 Select  of the music to add, and then select **Add to Queue**.
(Select **Select Multiple** to save multiple music pieces in the **Queue** at the same time.)



- 3 Select the music title at Home screen to check the saved **Queue**.

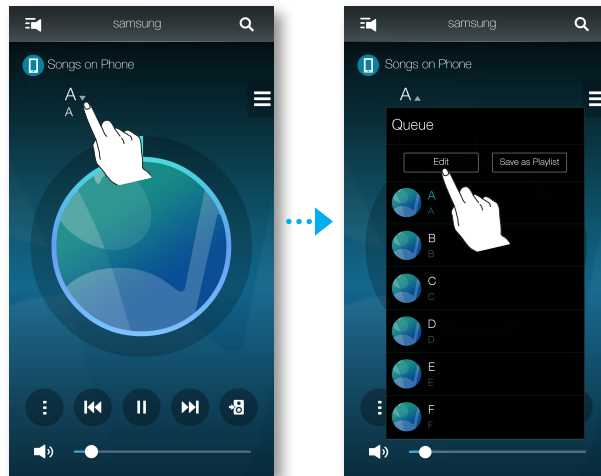



NOTES

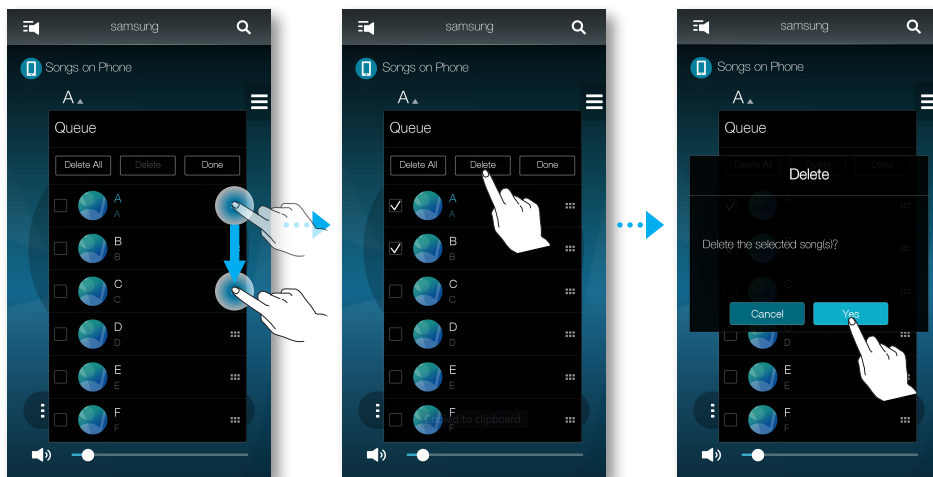
- ✓ You can save up to 360 pieces of music in the queue.
- ✓ You cannot save music played by station-based music providers such as TuneIn, Pandora, etc. in the queue.

■ Editing the queue

- 1 Select the music title at Home screen, and then touch **Edit**.



- 2 Touch and hold  and then drag to change the order of the music files, files.
- 3 Select files you want to delete (if any).
- 4 Touch **Done**, and then touch **Yes**.

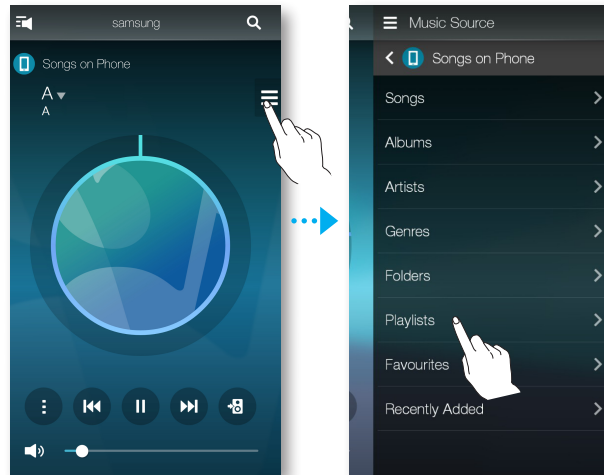


■ Managing a playlist

■ Creating a Playlist

You can create your own playlist to save or edit.

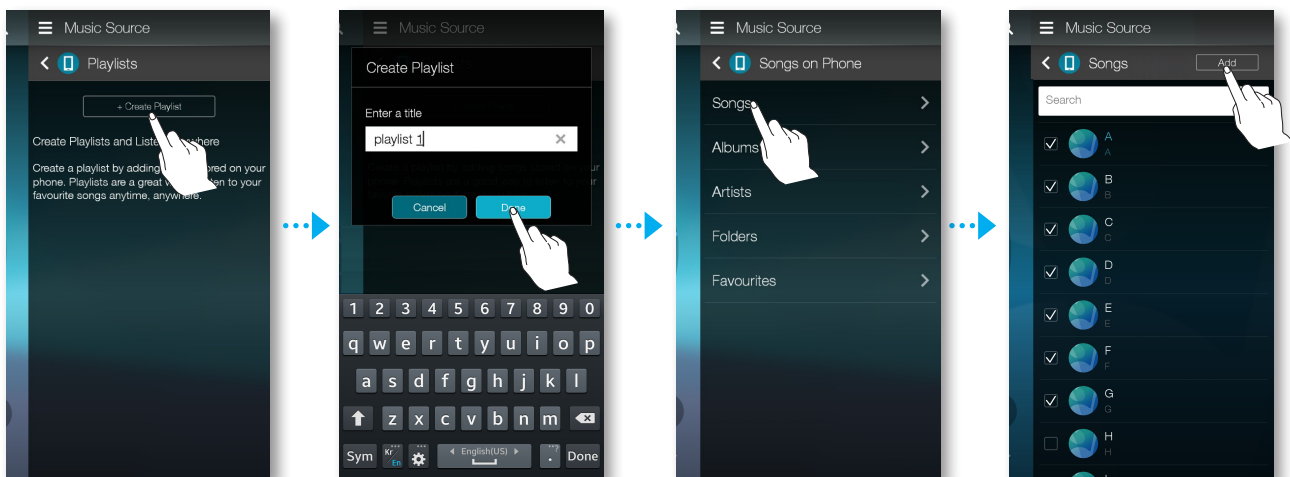
- 1 Touch , and then select **Playlists**.



- 2 Select **Create Playlist**, and then enter a name for the playlist. Touch **Done**.

- 3 Touch **Songs**.

- 4 Select the music you want to save in playlist, and then touch **Add**.

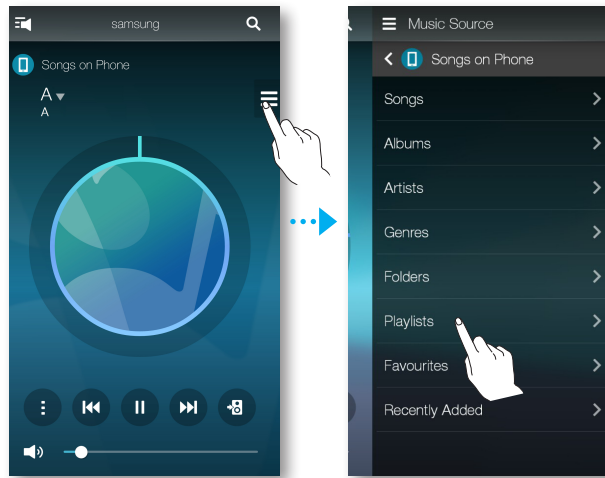




NOTE

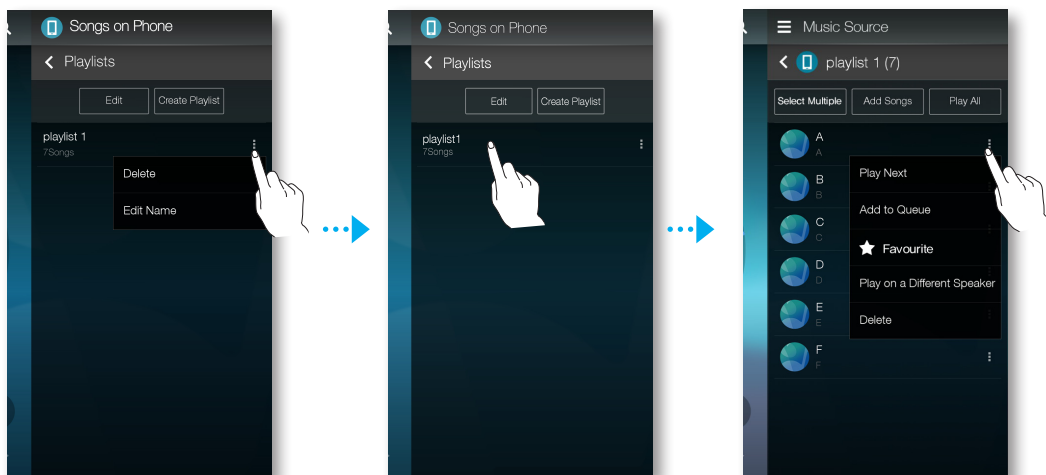
- ✓ You can save up to 360 pieces of music in the playlist.

■ Editing a Playlist



- 1 Touch , and then select **Playlists**.

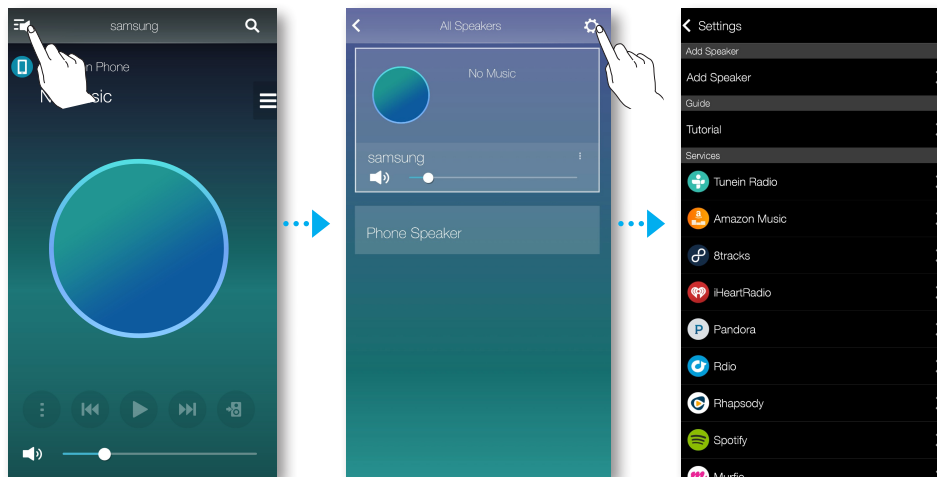


- 2 To delete a playlist or edit the name of a playlist, select  to the right of the playlist, and then select **Delete** or **Edit Name**.
- 3 To access additional options, touch the name of the playlist to bring up the list of songs. Then, select  to the right of a music file. On the screen that appears, select an option. You can select **Play Next**, **Add to Queue**, **Favourite**, **Play on a Different Speaker**, or **Delete**.



Using the Settings menu

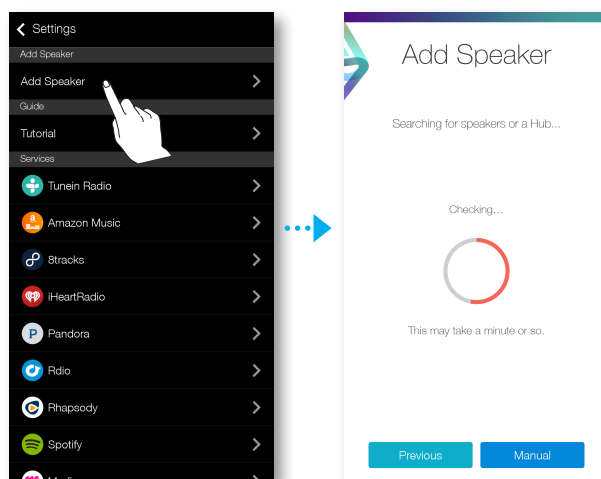
- 1 On your Smart device, select the **Samsung Multiroom** app.
- 2 Touch  to view the list of all speakers.
- 3 Touch .



Add Speaker

Add Speaker

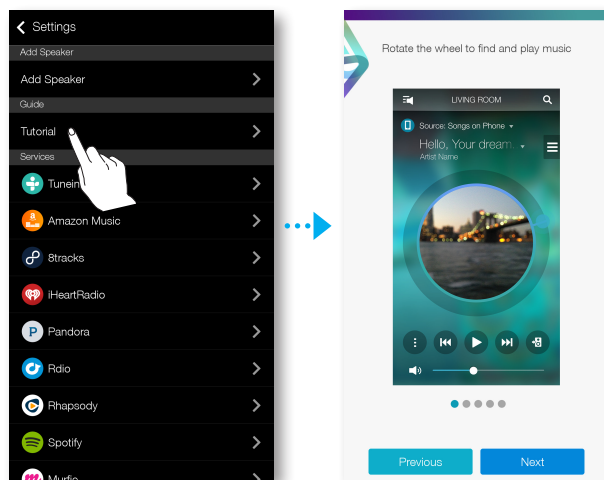
To add additional speaker(s) to an existing speaker connection, refer to "Adding additional speaker(s)" on pages 16~17. [Click here.](#)



■ Guide

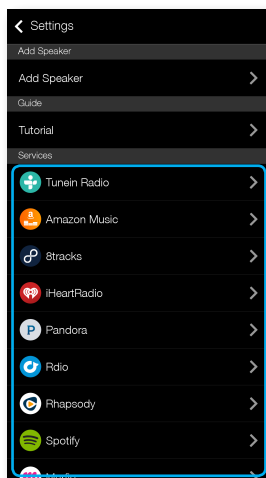
■ Tutorial

Select the **Tutorial** to learn how to use the app.



■ Services

Displays a list of available services.



NOTES

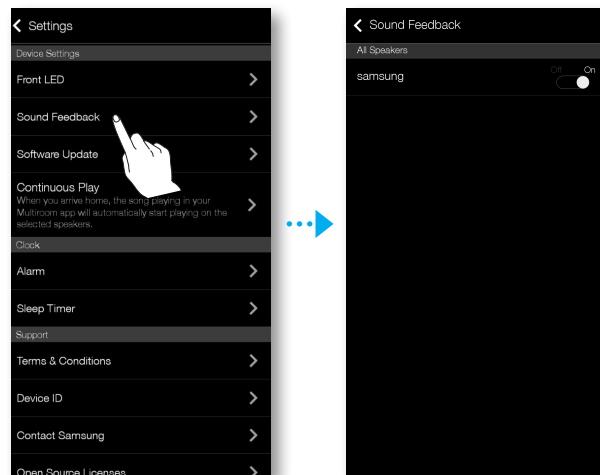
- ✓ Depending on your region or manufacturer, supported content services may differ.
- ✓ Some music services may require you to sign up for a membership or log in.
- ✓ You may not subscribe to a service using your smart device.
To use a for-pay service, first subscribe to the service through your computer.
- ✓ Some TuneIn radio channels may be restricted according to their site policy.
- ✓ Supported music service may be added or deleted according to corresponding policy.

■ Device Settings

■ Sound Feedback

Sound Feedback is a function to indicate current status of speaker through the sound.

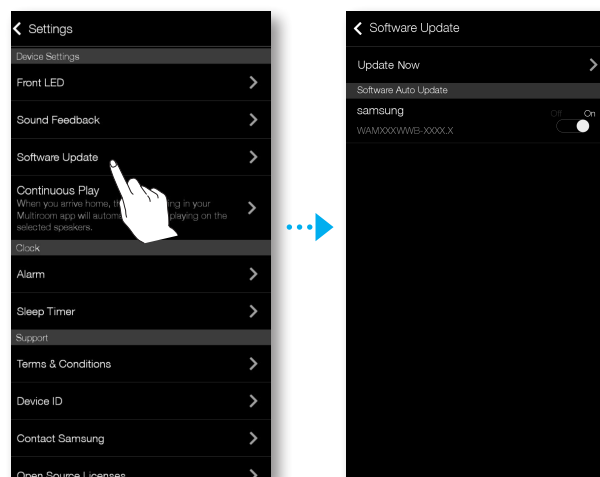
- **Off** : Turns off the **Sound Feedback**.
- **On** : Turns on the **Sound Feedback**.



■ Software Update

Shows the speaker's current software version, and lets you turn auto update on or off.

- **On** : When on, automatically updates the software when new firmware is released.
- **Off** : Turns off the auto update function.






NOTES

- ✓ Auto update is available when your speaker is connected to a network and the **Software Auto Update** function is set to **On**.
- ✓ It is strongly recommended that **Software Auto Update** settings on all the speakers used are set to **On**. Problems with networked functions may otherwise occur due to incompatibility issues when a variety of speaker software versions is used on linked speakers.
- ✓ **Software Auto Update** will only update the speaker when the speaker is in Standby mode.
To manually place the speaker in Standby mode:
 - 1) Set **Software Auto Update** to **On**.
 - 2) Touch and hold a touch area for 5 seconds. Touch to wake up.

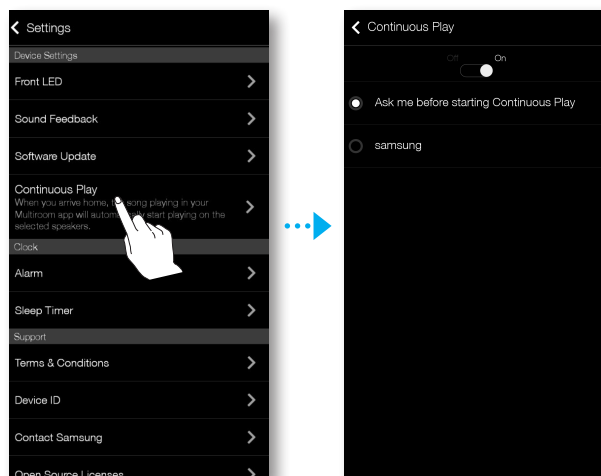
Update Now

You can update your speaker's software manually using **Update Now**.

- 1 Touch .
- 2 Select **Software Update**.
- 3 Select **Update Now**.
- 4 **Update Now** searches for a current software update. If an update is available, it will download and install the update on your speaker. If you already have the most current software on your speaker, **Update Now** displays "Latest version already installed."

■ Continuous Play

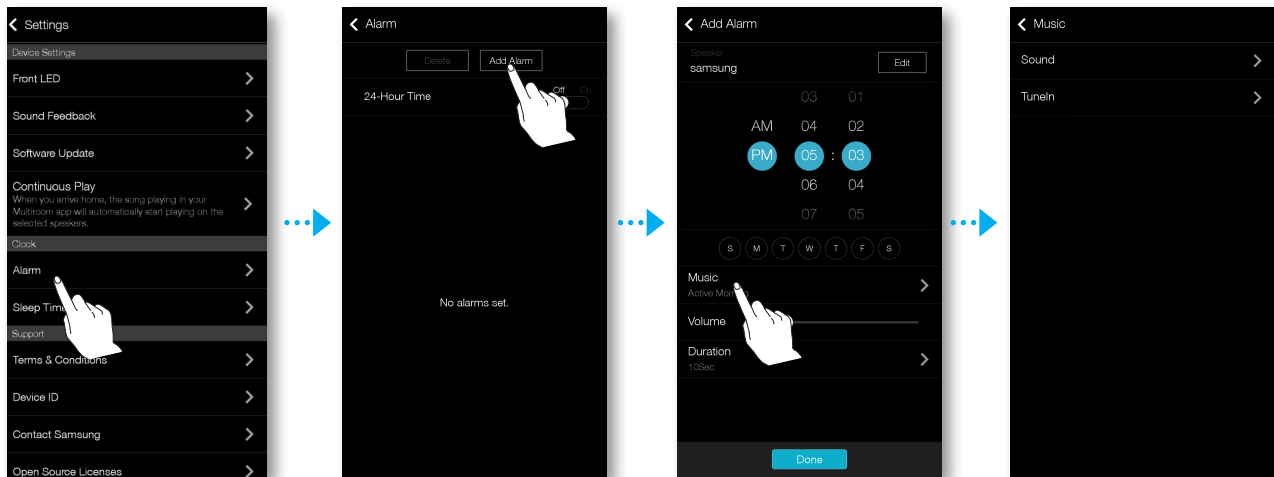
Since this function allows you to switch the sound output from your mobile device into the speaker automatically, you can just enjoy the music seamlessly.



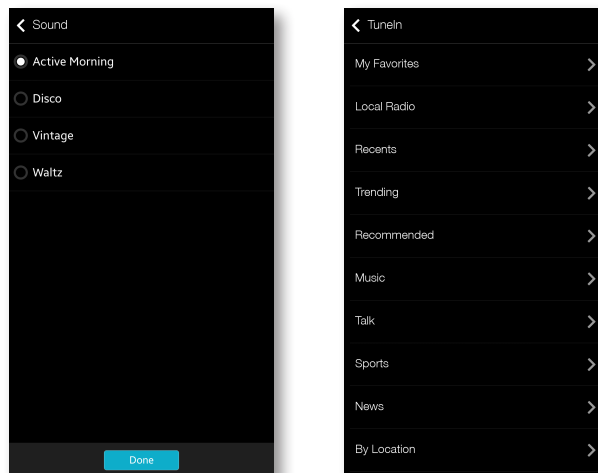
■ Clock

■ Alarm

- 1 Touch **Alarm**, and then touch **Add Alarm**.
- 2 Select the alarm date, time, day of the week, alarm volume and duration.



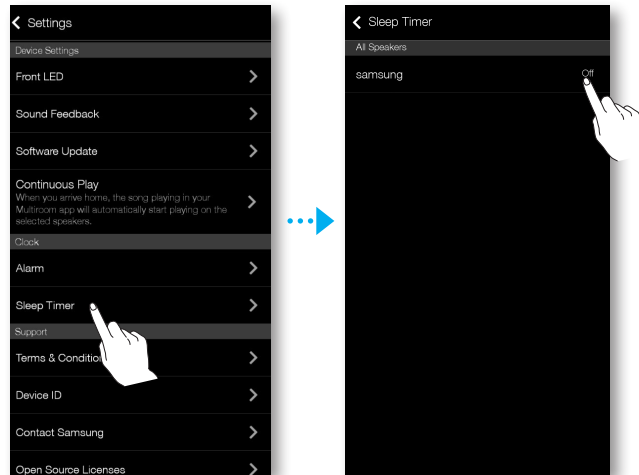
- 3 Touch **Music**, select **Sound** or **TuneIn** to select your desired alarm sound.



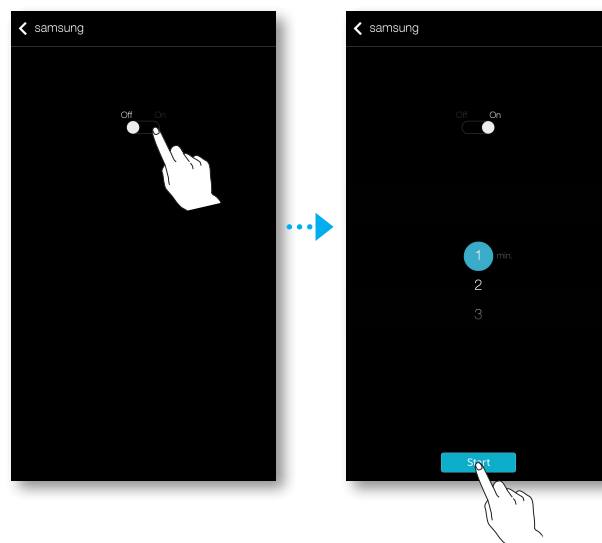
■ Sleep Timer

You can turn off the speaker by setting sleep time.

- 1 Touch **Sleep Timer**, and then touch **Off**.

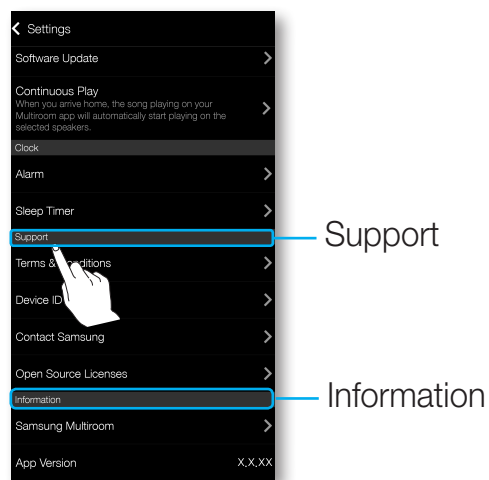


- 2 Drag to **On**, set your desired time, and then select **Start**.



■ Support

- **Term & Conditions**
Lets you check the **Term & Conditions**.
- **Device ID**
Lets you check the **Device ID**.
- **Contact Samsung**
Provides a link to the Samsung website.
- **Open Source Licenses**
Lets you view the **Open Source Licences**.




■ Information

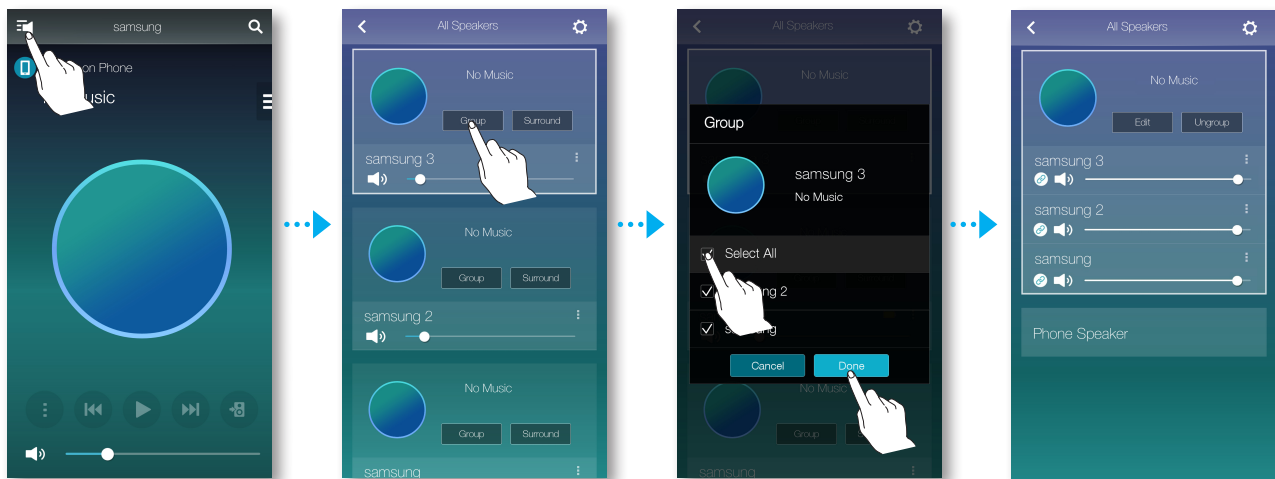
- **Samsung Multiroom**
Allows you to check the software version number of the speaker.
- **App Version**
Allows you to check the Samsung Multiroom app version.

Connecting multiples speakers

Setting Groups

You can group multiple speakers into one group that plays the same music. Grouping is available only when multiple speakers are connected to the same network.

- 1 Touch  to go to the list of all speakers.
- 2 Touch **Group**.
- 3 Select other speakers to add into the group, and then touch **Done**.

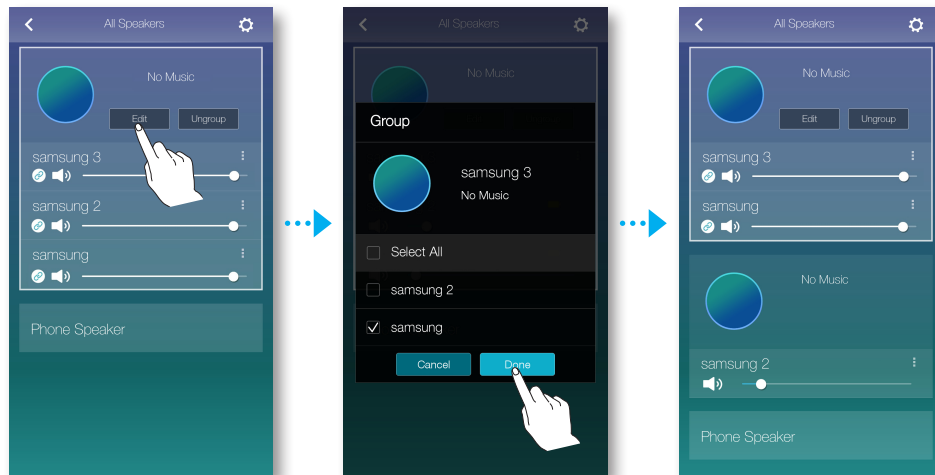


NOTES

- ✓ Group playback is not available for Bluetooth and TV SoundConnect connections.

■ Editing group

- 1 Touch **Edit**.
- 2 Select the speaker to edit and touch **Done**.




■ Ungrouping

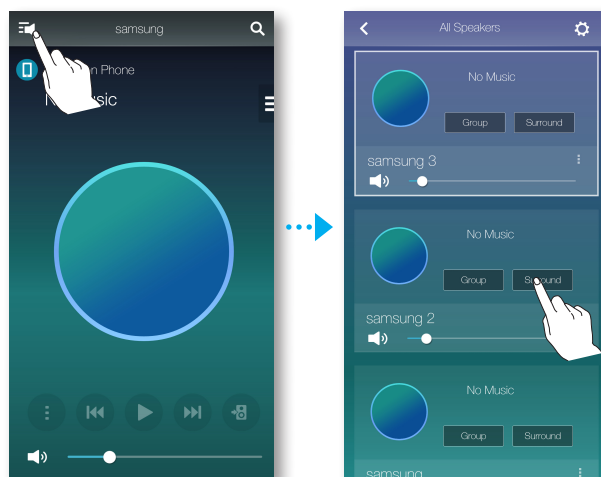
Touch **Ungroup**.



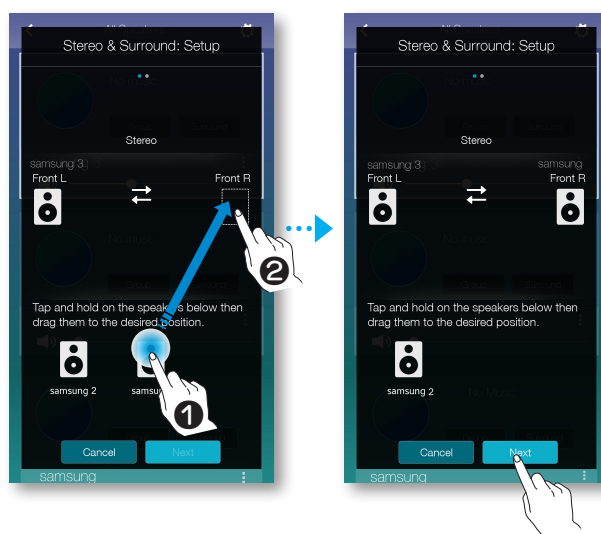
Setting the Surround Sound Mode

You can configure multiple speakers for surround sound effect.

- 1 Touch  to go to the list of all speakers.
- 2 Touch **Surround**.



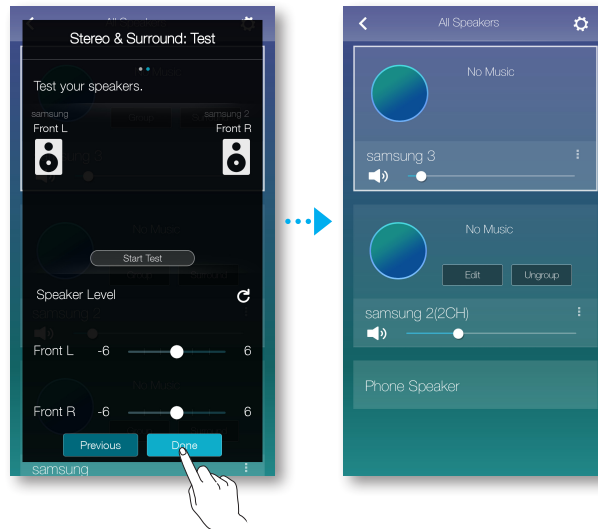
- 3 Touch and hold a speaker, and drag it to the desired place and then select **Next**.



NOTE

- ✓ If just 2 speakers are connected, press **Surround** to configure surround sound system automatically.

- 4 Test speakers and adjust speaker volume, and then touch **Done**.



NOTES

- ✓ When enabling the Surround Sound mode, it is recommended to set the same speakers you assign to **Front L** and **Front R**.
- ✓ You can configure 4.1 channel surround sound system with a soundbar and 2 speakers.
- ✓ You cannot configure **Surround** sound system with a soundbar and one speaker.

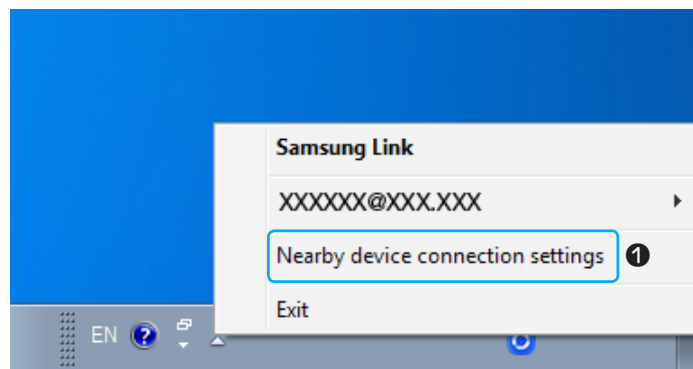
Using miscellaneous functions


Playing Media Content Saved in a PC

Samsung Link

Install the **Samsung Link** program for easier playback of music stored in your PC through M5. Visit <http://link.samsung.com> and download the **Samsung Link** application and finish installing it.

- 1 Visit <http://link.samsung.com> and login with your Samsung account. Follow the instructions shown to install the program.
- 2 Select the folder to be shared.
 - 1) Move the mouse pointer over the **Samsung Link** icon from the icons tray, right click on it and select "1".



- 2) On the screen displayed, you can add or delete shared folders. After adding or changing contents of shared folders, make sure to press the  button.
- 3 Select the Devices from the **Samsung Multiroom** app to select PC. Shared PC folders and music files will be displayed. (For further details, refer to page 26.) [Click here.](#)



NOTES

- ✓ Note that the PC containing the shared folders and your M5 must be connected to the same wireless router.
- ✓ Samsung Link software should have been installed on the computer. The mobile device should support Samsung Link. For more information, visit Samsung's content and service portal at <http://link.samsung.com>.
- ✓ You may experience compatibility issues when attempting to play media files via a third-party DLNA server.
- ✓ However, the content shared by a computer device may not play depending on the encoding type and file format of the content. In addition, some functions may not be available.
- ✓ The media content may not smoothly play depending on the network status. If this is the case, use a USB storage device.

■ Wireless Audio - Multiroom for Desktop

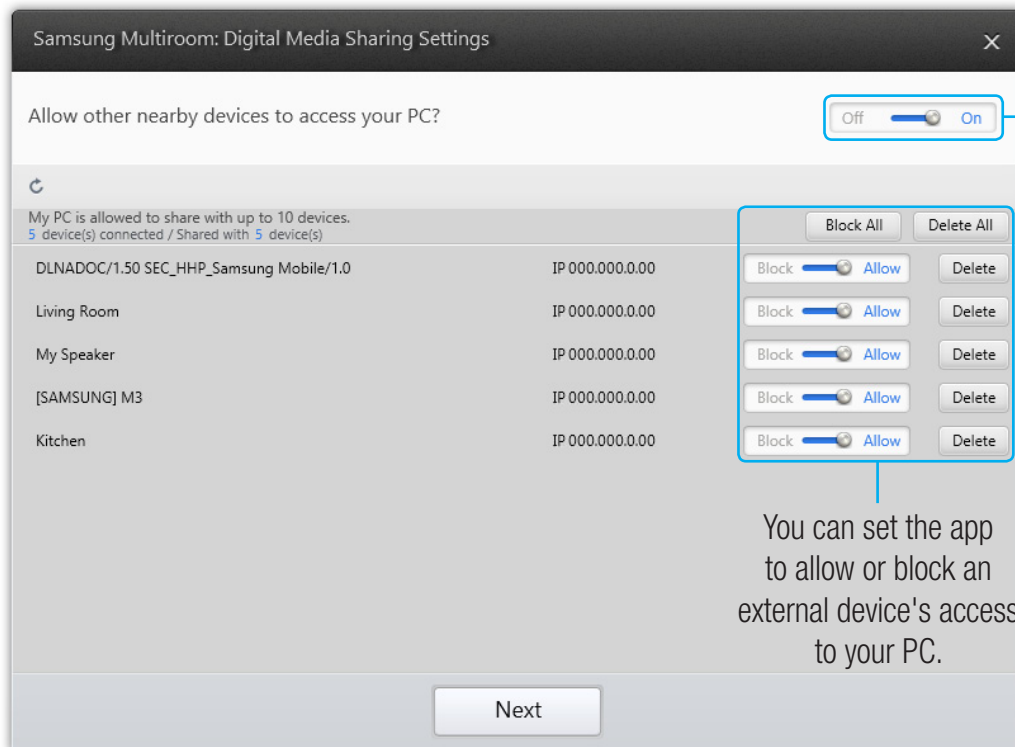
To play iTunes system and shared PC music files through speaker, install the **Wireless Audio - Multiroom for Desktop** program.

Visit www.samsung.com to download the **Wireless Audio - Multiroom for Desktop** program and install it.



NOTES

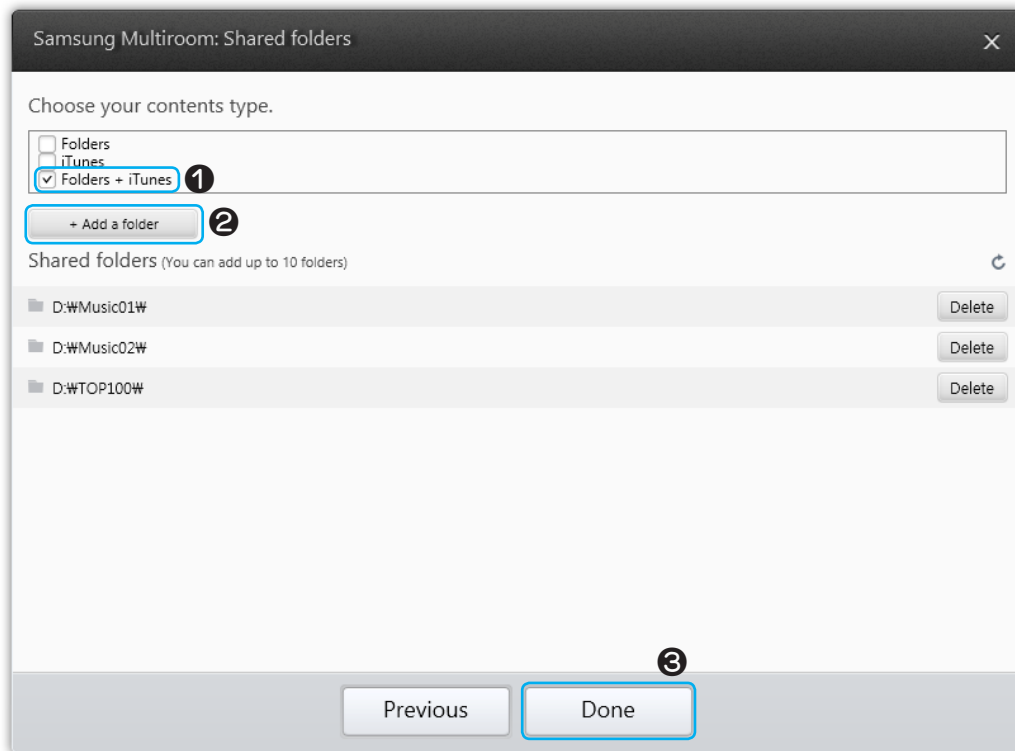
- ✓ Note that the PC containing the shared folders and your speaker must be connected to the same wireless router.
 - ✓ If the connected Windows PC or the Mac switches to off-display mode, power saving or hibernation mode, the App will stop.
 - ✓ If the firewall of the Windows computer is activated, the App may not work. In such a case, deactivate the firewall of Windows or other vaccine firewall.
 - ✓ The *.pkg file is for Mac while *.msi is for Windows installation. Download the appropriate file for your computer and install it.
 - ✓ Supported OS: Windows 7 or higher, Mac OS X 10.7 or later.
- 1 Double click the icon created on the PC's desktop.
 - 2 Select **Next** to set the shared folders.



Wireless Audio - Multiroom for Desktop: Off, On

You can set the app to allow or block an external device's access to your PC.



- 3 Select the content type and add the selected folder to the shared folders list. After sharing folders, make sure to press the **Done** button.



- 4 On your Smart device, select the **Samsung Multiroom** app.
- 5 Select desired PC on the **Samsung Multiroom** app, and shared folders and files stored in the PC will be displayed. (For further details, refer to page 26) [Click here.](#)



NOTE

- ✓ After adding or changing contents of shared folders, make sure to press the  button. If you don't press the  button, the files shared by a computer device may not displayed in the **Samsung Multiroom** app.

Appendix

Troubleshooting

Before requesting service, please check the following.

| Symptom | Check | Remedy |
|---------------------------|--|---|
| I cannot group speakers. | <ul style="list-style-type: none">Is the speaker connected to the network via Wi-Fi? | <ul style="list-style-type: none">If the speaker is connected to the network via Bluetooth or TV SoundConnect, you cannot use the group speakers function. |
| App doesn't work properly | <ul style="list-style-type: none">Does an error occur when accessing the app? | <ul style="list-style-type: none">Make sure your smart device is compatible with the app.Make sure the app is the latest version.If used with a HUB<ul style="list-style-type: none">Make sure the HUB and the smart device are connected to same router.Make sure the HUB's indicator LED's show that it is working correctly. (See page 12, item 3.) Click here.If you experience troubles with connecting the HUB and speaker, try relocating the speaker so that the speaker is closer to the wireless router or HUB. |



NOTE

- ✓ If the problem persists, consult the service centre for troubleshooting.

Compatible speakers

- Mobile : Android 2.3.3 (Gingerbread) or above, iOS (6.0) or above



NOTES

- ✓ Some devices may not be compatible with the speaker.
- ✓ Note that a speaker of an older version may not be supported.

SAMSUNG