

The Samsung logo, consisting of the word "SAMSUNG" in white, bold, sans-serif capital letters, is centered within a blue oval shape.

User Manual

Multiroom Link

(For Soundbar users)

Imagine the possibilities

Thank you for purchasing this Samsung product.
To receive more complete service, please register your product at
www.samsung.com/register

Figures and illustrations in this User Manual are provided for reference only and may differ from actual product appearance.

CONTENTS

CONNECTIONS

Preparing Connection

- Installing the Samsung Multiroom app 3
- Accessing the Samsung Multiroom app 3

Connecting Wirelessly

- Connecting to your wireless network automatically (Android/iOS) 4
- Connecting to the wireless network manually (Android) 6
- Connecting to the wireless network manually (iOS) 8

Connecting with a LAN Cable

12

Adding Additional Speaker(s)

13

Connecting with a HUB (Not Included)

15

- Adding the Soundbar to a hub 17
- Connecting additional hub (sold separately) 18

USING THE SAMSUNG MULTIROOM APP

The App at a Glance

19

Switching the Input Source

20

Playing Music

21

- Playing a music file stored in the smart device 21
- Listening to streaming music 24
- Listening to music from nearby devices 24

Listening to the Internet Radio

25

- Following station 26
- Setting presets 27

3	Setting Up the Speaker	28
	Setting up the alarm	28
	Setting up bedtime	29
	Renaming product	30
4	Using the Settings Menu	31
	Add Speaker	31
	Guide	32
	Services	32
	Device Settings	33
	Clock	37
	Support	38
	Information	40

CONNECTING MULTIPLES PRODUCTS

41

Selecting the Product

41

- Selecting another product for playback 41

Setting Groups

42

Setting the Surround Sound Mode

43

USING MISCELLANEOUS FUNCTIONS

45

Playing Media Content Saved in a PC

45

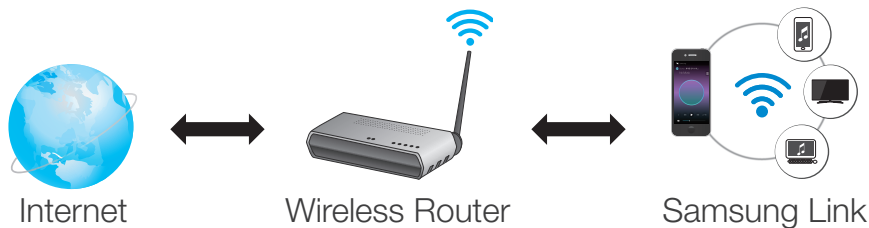
- Wireless Audio - Multiroom for Desktop 45

TROUBLESHOOTING

48

CONNECTIONS

PREPARING CONNECTION



- 1 Requirements: Wireless Router, Smart Device
- 2 The wireless router should be connected to the Internet.
- 3 The smart device should be connected to the router via a Wi-Fi connection.

• Installing the Samsung Multiroom app

To use the product, you must download and then install the **Samsung Multiroom** app by accessing the app through Google play or App Store.

With the **Samsung Multiroom** app installed, you can play music stored in your smart device, from connected devices and other content providers, and from Internet radio stations through the product.

Android

* Market search : **Samsung Multiroom**



iOS

* Market search : **Samsung Multiroom**



• Accessing the Samsung Multiroom app

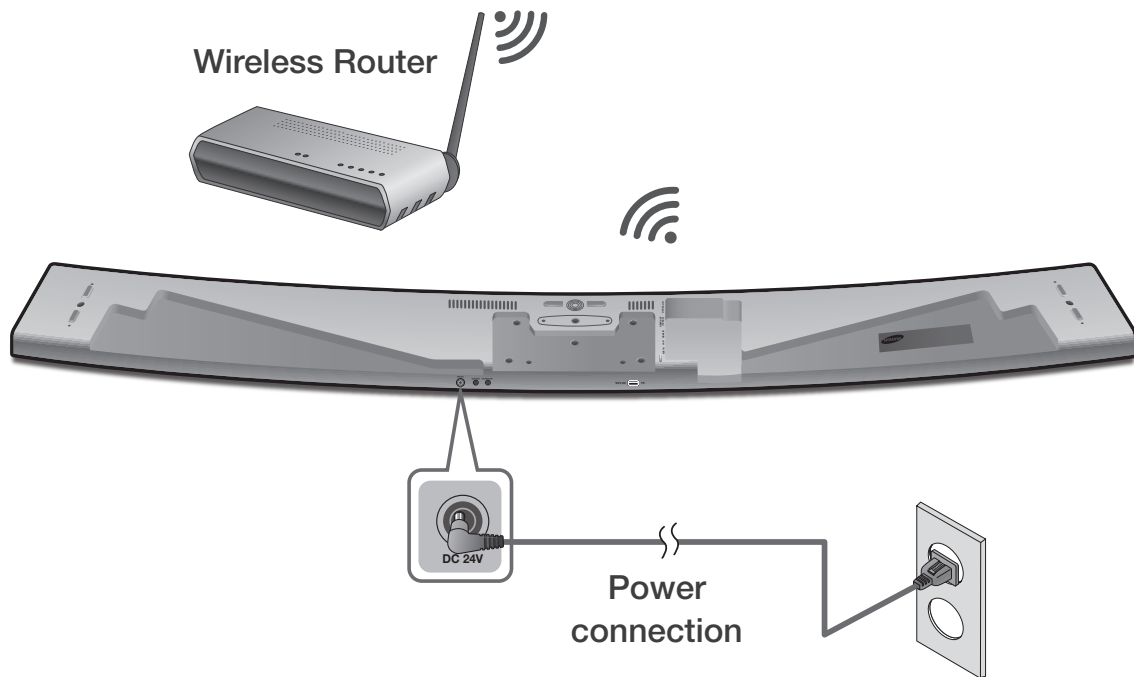
To access the **Samsung Multiroom** app, press the Multiroom app icon on your smart device.



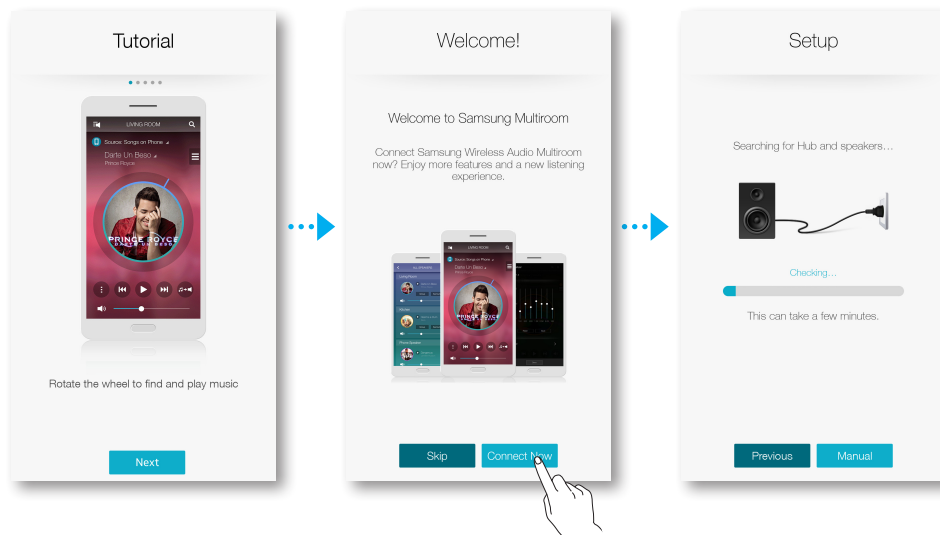
- Please terminate the **Samsung Multiroom** app when audio products are not used because the battery of your smart device can be consumed quickly if the app is working.

CONNECTING WIRELESSLY

- Connecting to your wireless network automatically (Android/iOS)



- 1 Plug the product into an electrical outlet.
- 2 On your Smart device, select the **Samsung Multiroom** app.
- 3 Check the **Tutorial**, and then press the **Connect Now**.
 - It searches for the device available for pairing.



4 Once an available device is found, it attempts to connect to the wireless network. In case of secure network, the password prompt appears on the smart device screen. Use the onscreen keyboard to enter the password.

- Depending on the network environments, the product(s) may not be automatically connected. Select and proceed with manual settings if no connectable device is found. (➡ Android pages 6~7, iOS pages 8~11)
- Select and proceed with manual settings to connect HW-H750 or HW-H751 model to the network. (➡ Android pages 6~7, iOS pages 8~11)

5 Press **Connect**.

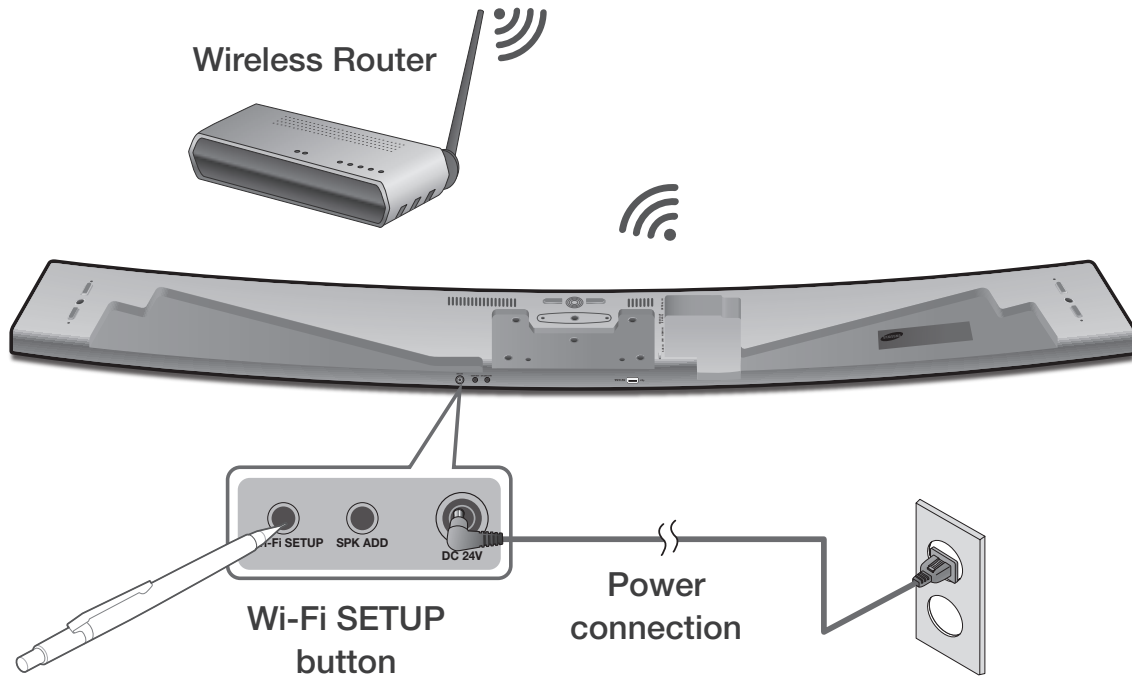
- Network connection is completed.



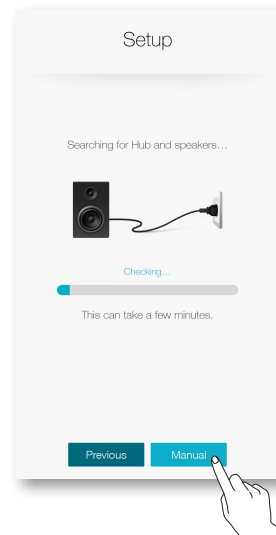
- To connect to your wireless network safely, you must enter the valid password.
 - For connecting to the home or work wireless network, consult your service provider or the network administrator.
- If the product fails to connect to a network or the network connection does not work normally, move the product closer to the hub or router, and then try again.
- The distance between devices or obstruction and interference from other wireless devices may influence communication between the product and network.
- This product may be found by some other Wi-Fi devices. However, they are not allowed to connect to this product.
- Once the Wi-Fi connection is established initially, it is maintained unless the wireless router is replaced or its network settings are changed.

• Connecting to the wireless network manually (Android)

Depending on the network environments, the product(s) may not be automatically connected. In that case, you can set up the product manually to connect to the network.



1 If the automatic setup fails, select the **Manual**.

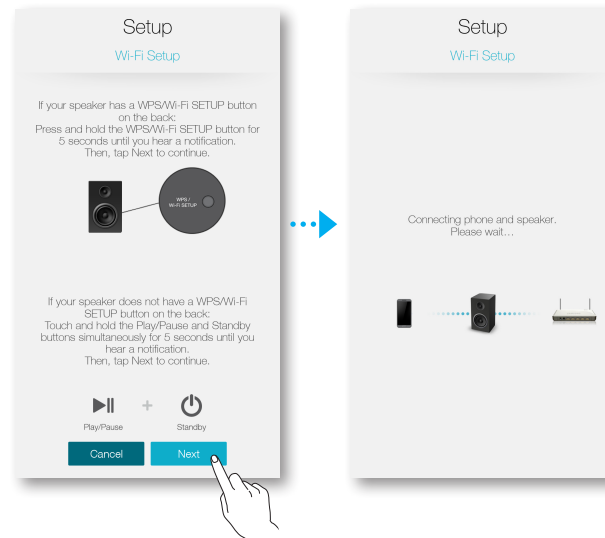


2 After turning the product on, press and hold the **Wi-Fi SETUP** button located at the back for 5 seconds.

- **WIFI SETUP** will appear on the product display window and a beep will sound.
- The **Wi-Fi SETUP** feature will also activate by pressing down the **Anynet+** button on the remote controller for 7 seconds.
- The product can wait for 2 minutes in its standby mode until the Wi-Fi connection is established.

3 On your smart device, press **Next**.

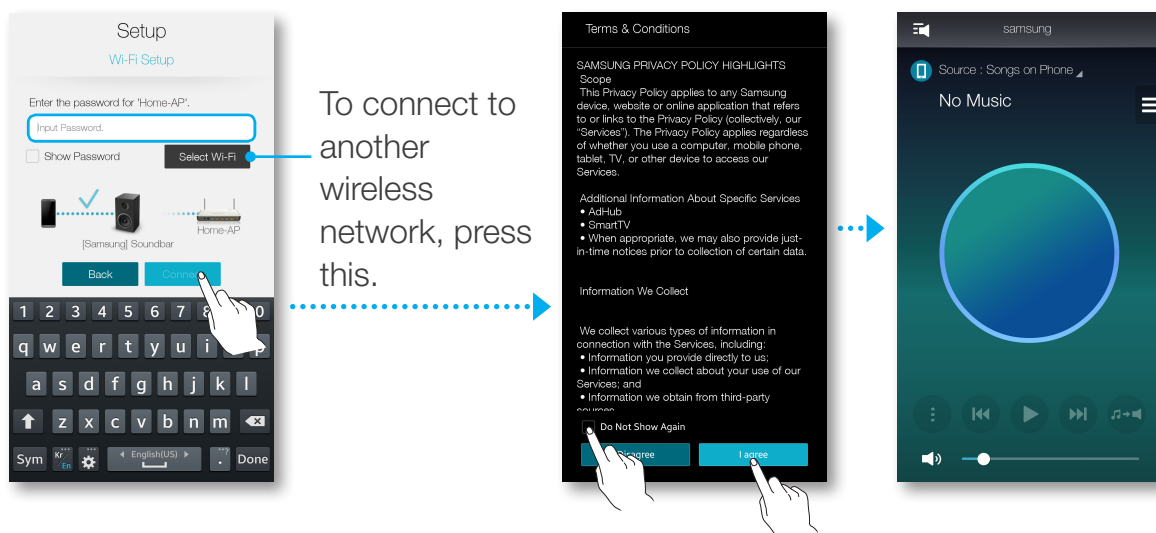
- It searches for the device available for pairing.



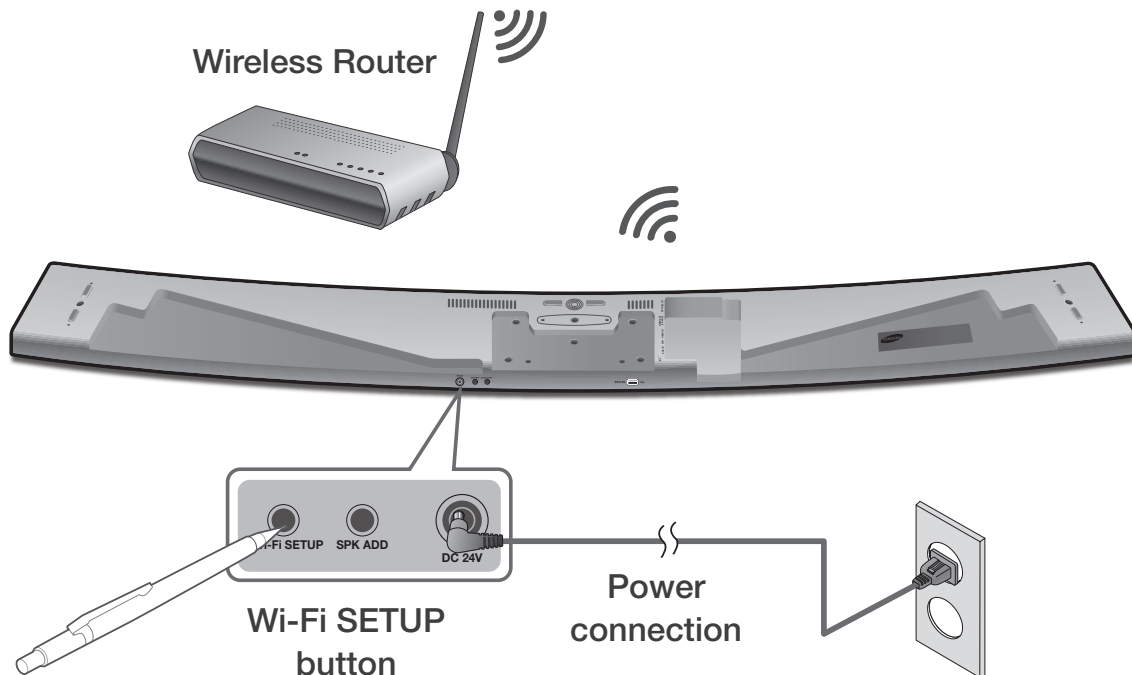
4 Once an available device is found, the product tries to connect to the newly found smart device first, then it attempts to connect to the wireless network. In case of secure network, the password prompt appears on the smart device screen. Use the onscreen keyboard to enter the password.

5 Press the **Connect**.

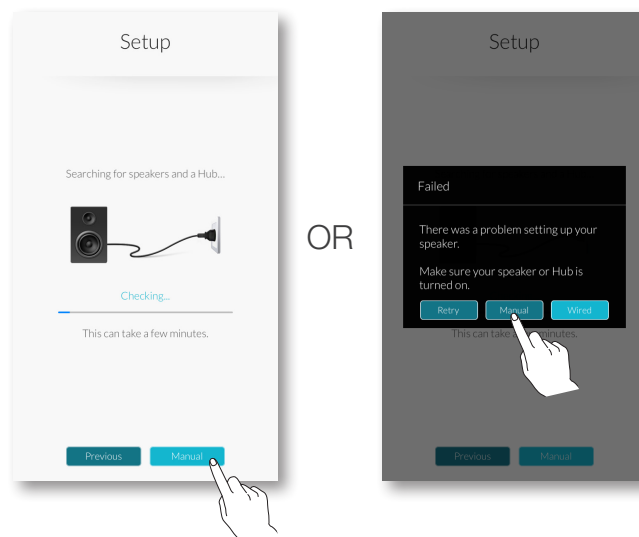
- Network connection is completed.



• Connecting to the wireless network manually (iOS)



1 If the automatic setup fails, select the **Manual**.

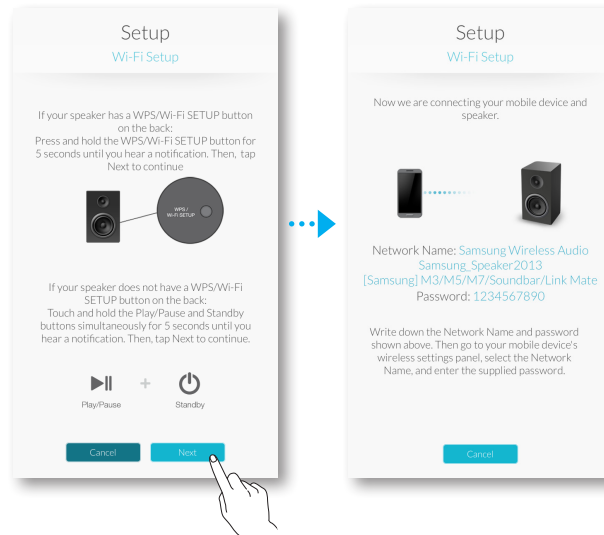


2 After turning the product on, press and hold the **Wi-Fi SETUP** button located at the back for 5 seconds.

- **WIFI SETUP** will appear on the product display window and a beep will sound.
- The **Wi-Fi SETUP** feature will also activate by pressing down the **Anynet+** button on the remote controller for 7 seconds.
- The product can wait for 2 minutes in its standby mode until the Wi-Fi connection is established.

3 On your smart device, press **Next**.

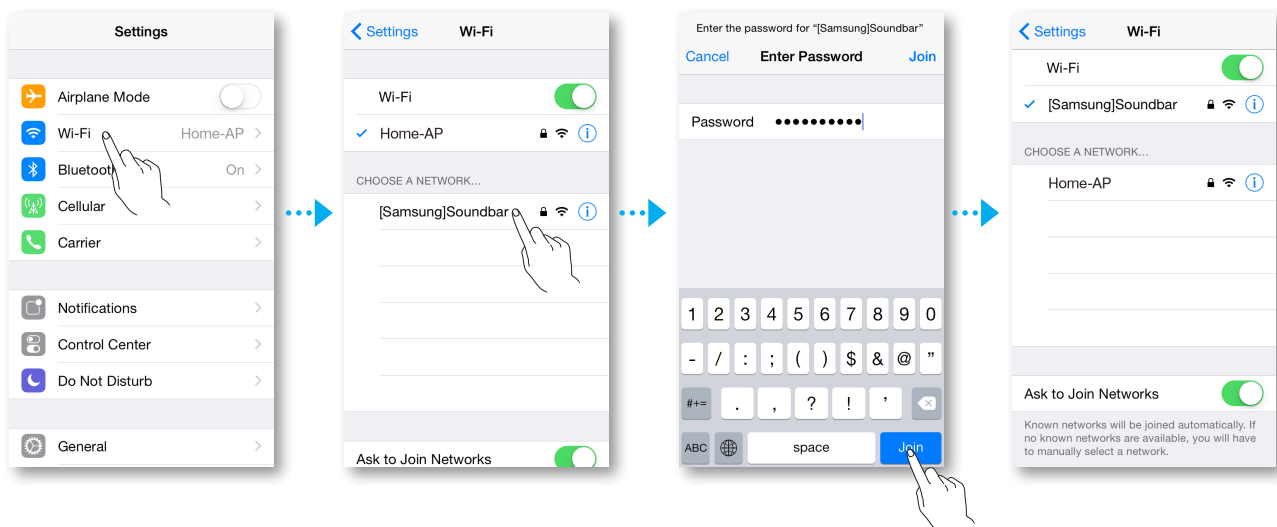
- It searches for the device available for pairing.



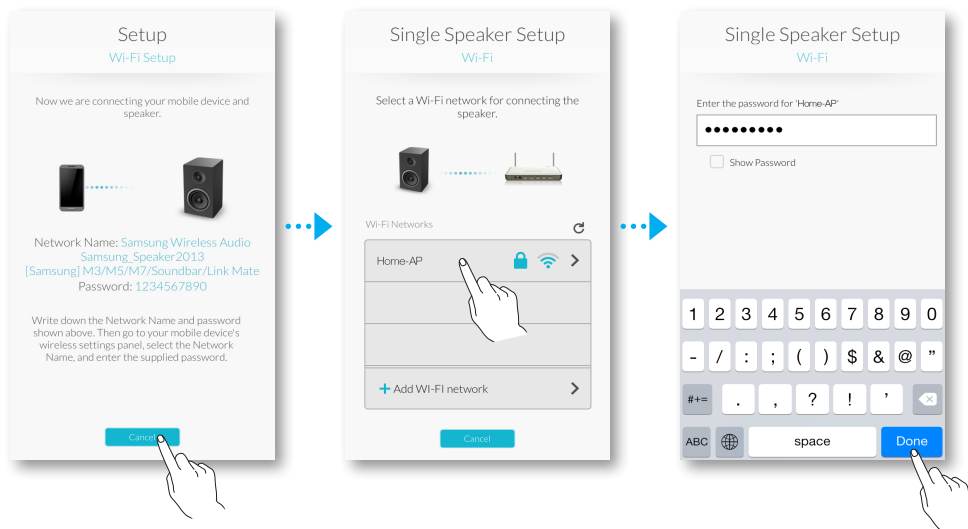
4 Go to **Settings** → **Wi-Fi** in iOS, and then select the **[Samsung] Soundbar**.

5 To connect your smart device to the product, use the keyboard that appears to enter your password.

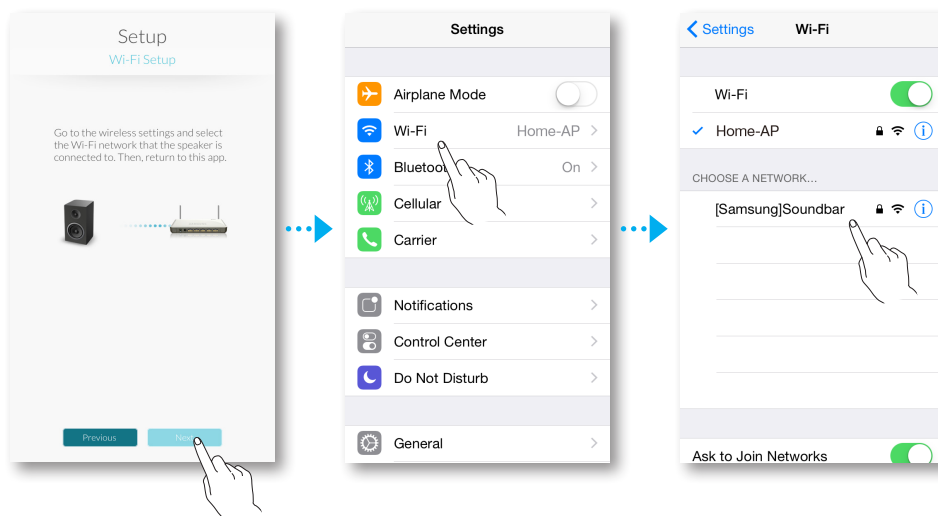
- The default password is **1234567890**.
- The product and the smart device are connected to each other.



- 6 Go back to the **Samsung Multiroom** app.
- 7 Select **Next**.
- 8 From the wireless network list, select your network.
- 9 If your network requires a password, the password prompt appears on the smart device screen. Use the onscreen keyboard to enter the password.
 - Once you finish entering, the product connects to the network.

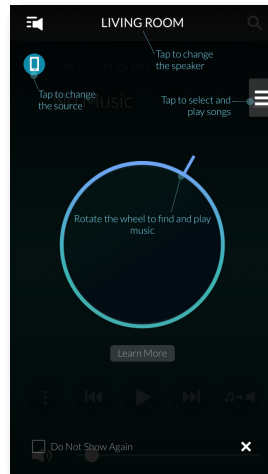


- 10 Go to **Settings → Wi-Fi** in iOS, and then select the network which the product is connected to.
(The product and smart device must be connected to the same wireless router.)
 - The smart device connects to the network.
- 11 When the product is completely connected, press **Next**.

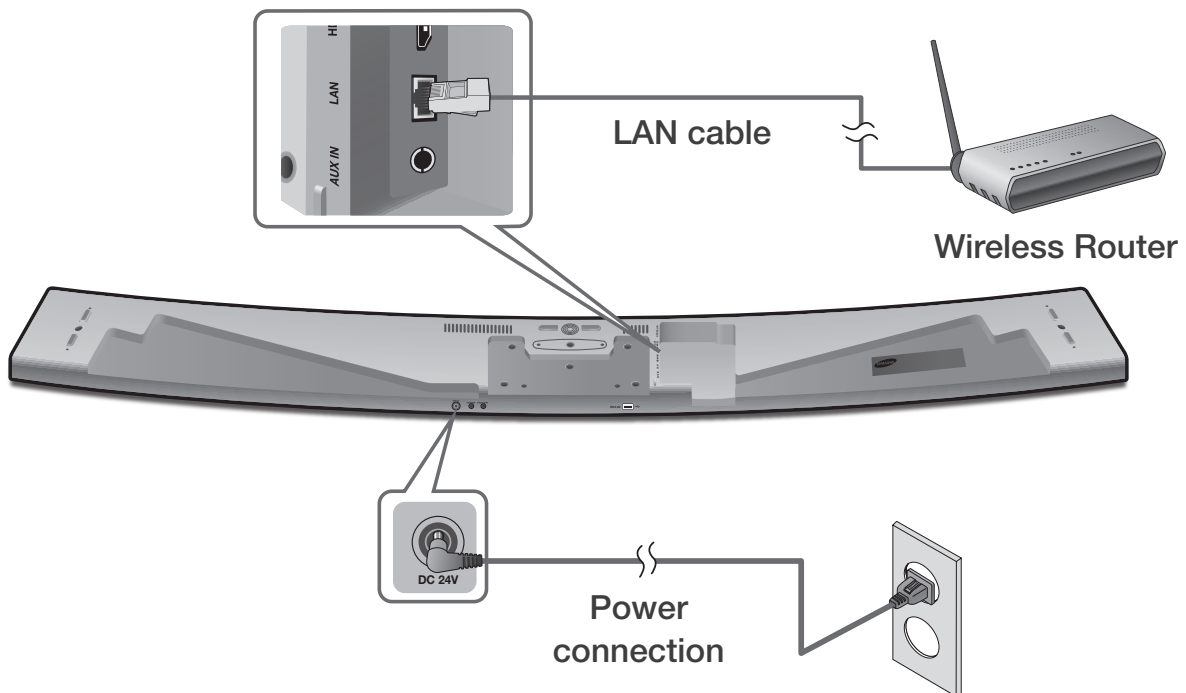


12 Go back to the **Samsung Multiroom** app.

- All network connections are finished.





CONNECTING WITH A LAN CABLE

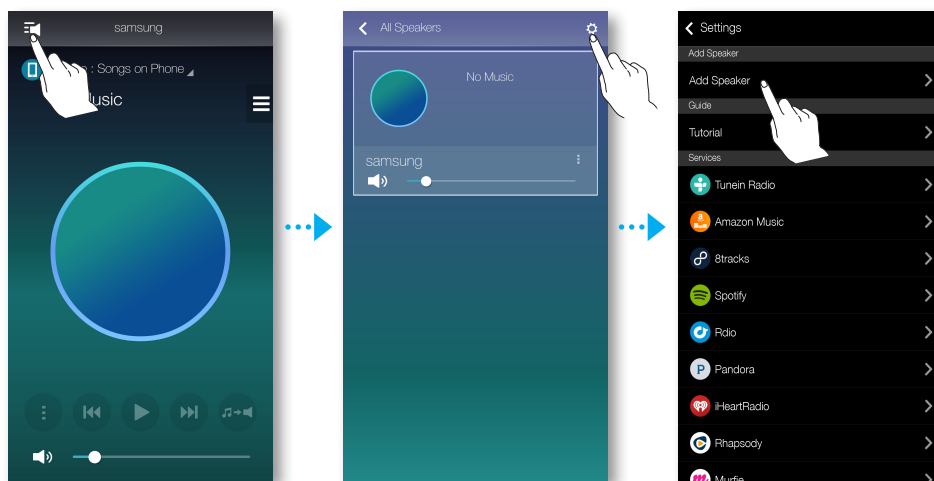


- 1** Connect one end of the LAN cable to the product's **LAN** port and the other end to the wireless router.
(The product and smart device must be connected to the same wireless router.)
- 2** Plug the product into an electrical outlet.
- 3** Launch the **Samsung Multiroom** app from your smart device. Proceed with connecting your speaker. (➡ See pages 4~5)

ADDING ADDITIONAL SPEAKER(S)

To add additional speaker(s) to an existing speaker connection, use **Add Speaker** function.

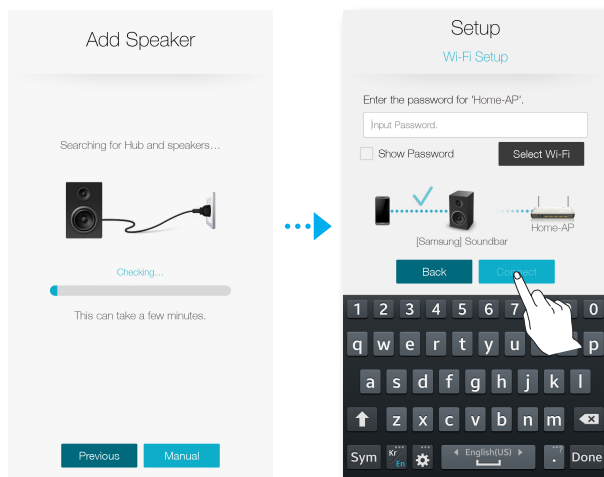
- 1 Run the **Samsung Multiroom** app on your smart device.
- 2 Press  to view the list of all speakers.
- 3 Press .
- 4 Press the **Add Speaker**.



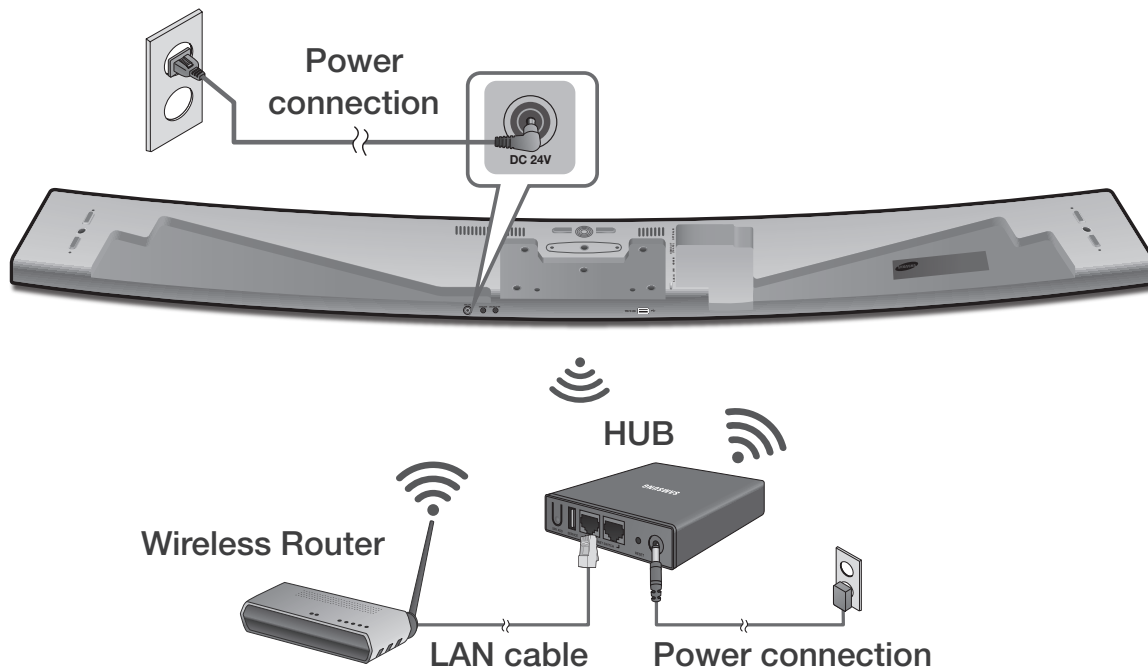
- 5 Connect the power cable of the speaker to be added to a wall outlet.
 - If connecting the power cable of the speaker to a wall outlet, the Wi-Fi is automatically switched into standby mode.
 - The product can wait for 2 minutes in its standby mode until the Wi-Fi connection is established.
- 6 Once an available device is found, it attempts to connect to the wireless network. In case of secure network, the password prompt appears on the smart device screen. Use the onscreen keyboard to enter the password.
 - Depending on the network environments, the product(s) may not be automatically connected. Select and proceed with manual settings if no connectable device is found. (📖 Android pages 6~7, iOS pages 8~11)






7 Press **Connect**.

- The additional new speaker is completely added.





CONNECTING WITH A HUB (NOT INCLUDED)



- 1 Connect a LAN cable to the router and the **ETHERNET SWITCH** on the back of the HUB.
 -  If the product is already connected to the router by wire, disconnect the LAN cable from the product and then connect the cable between the hub and router.
 - You can connect the LAN cable to any **ETHERNET SWITCH** port on the HUB.
- 2 Attach the HUB's power cord to the power port on the rear of the HUB, and then plug the power cord into an electrical outlet.
- 3 The power () and the HUB () indicators on the HUB's front turn on. When the pairing indicator () begins to flash, plug the product(s) into an outlet.
If the HUB's pairing indicator does not flash, press the **SPK ADD** button on the rear of the HUB.
 -  If you are adding multiple products, connect all the product's to electrical outlets. If you are not connecting all the products, refer to pages 13~14.

4 NETWORK CONNECTED will appear on the product display window and a beep will sound once a connection is established.

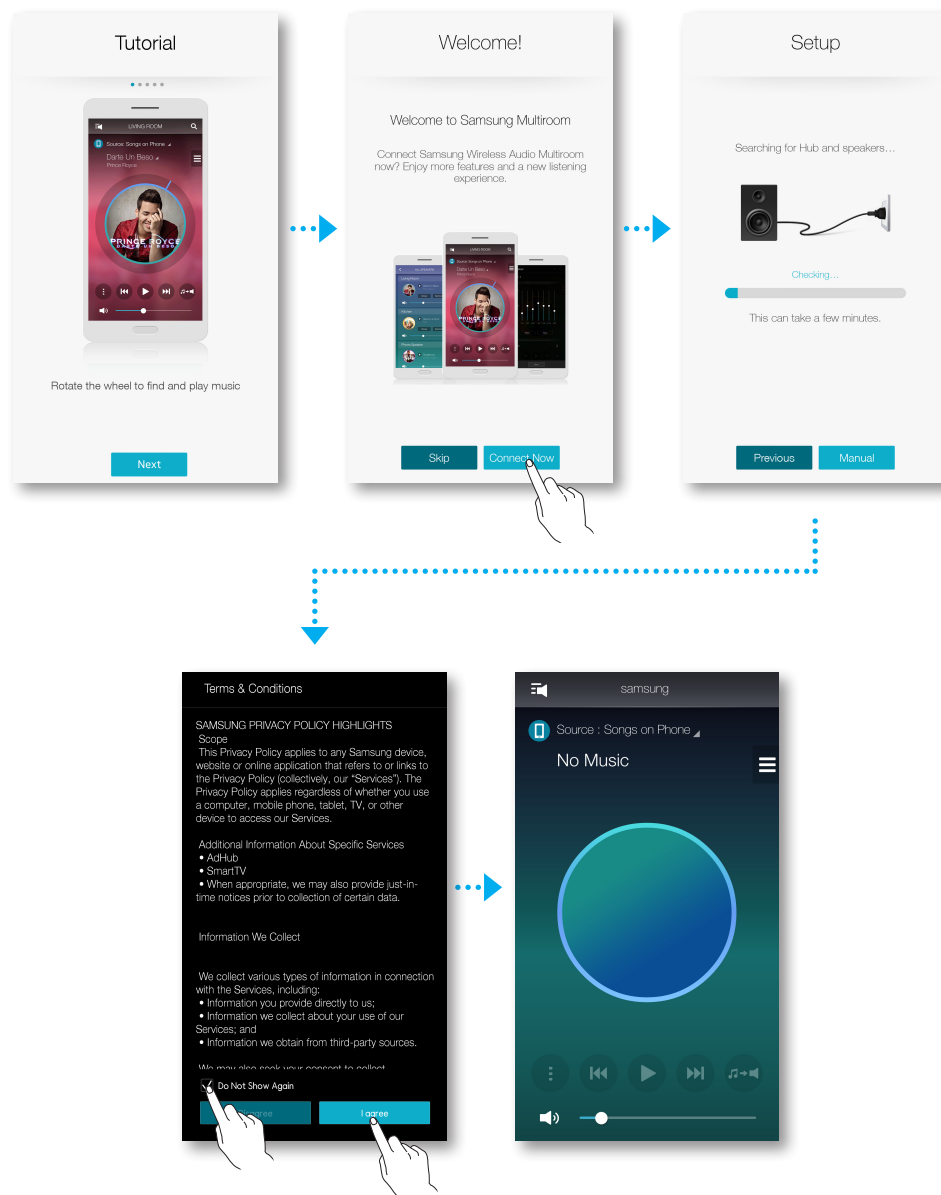


- Place each speaker at least 50 cm from the HUB when connecting them to the HUB.
- Your smart device cannot connect to products or the HUB if there is no wireless router.
- To confirm you have a proper connection, check the pairing indicator on the front of the HUB.
 - When you turn on the HUB for the first time, there is a 20 minute pairing period.
The pairing indicator () will blink for these 20 minutes or until pairing occurs. When you press the **SPK ADD** button to pair additional products, the pairing period is reduced to 10 minutes. The pairing indicator () flashes for 10 minutes or until pairing occurs. Turn on the product you want to pair with the HUB while the pairing indicator is flashing.
 - If Pairing mode is disabled, press the **SPK ADD** from the back of the hub to turn the Pairing mode on again. Then either reboot the product or press and hold the **SPK ADD** button from the back of the product for more than 5 seconds to connect the product with the hub.
- For a proper connection, connect the HUB to your router before turning on the Product.
 - Connecting the Product to the HUB may take a few minutes.
 - There will be a brief sound when the connection is established.

5 Connect your smart device to your Wi-Fi network. (The HUB and the smart device should be connected to the same router.)


6 Download the **Samsung Multiroom** app from Google Play or the App Store.

7 On your smart device, select the **Samsung Multiroom** app. Setup starts.



- 8 If the automatic setup fails, run the App again and follow the instructions in the app guide on your device to connect the product and the HUB.

● Adding the Soundbar to a hub

- 1 Press the **SPK ADD** button from the back of the hub.
- 2 Once the Pairing () indicator on the front of the hub starts to blink, connect the Soundbar you want to add to the power outlet and press the **SPK ADD** button from the back of the Soundbar for 1 second.
 - The **SPK ADD** Soundbar feature will also activate by pressing down the **WOOFER** button on the remote controller for more than 5 seconds.
 - The hub will search for and then automatically connect to a connectable Soundbar.

3 NETWORK CONNECTED will appear on the Soundbar display window and a beep will sound once a new Soundbar is connected to the hub.

4 Launch the **Samsung Multiroom** app from your smart device. Proceed with connecting your speaker. (🔗 See pages 4~5)

- The hub connected to the wireless router will be searched and then automatically connected.



- Change the name of the connected Soundbar from the app to easily differentiate from other Soundbars. (🔗 See page 30)

• Connecting additional hub (sold separately)

An product and a HUB may not pair successfully if the product and HUB are too far apart or are on different floors.

In such cases, you can link two HUBs together by setting the second HUB to Repeater mode. The additional HUB amplifies the signal and lets you pair the product to the closest HUB.

1 Set the HUB that is connected to the wireless router to Pairing mode by pressing its **SPK ADD** button for 1 second.

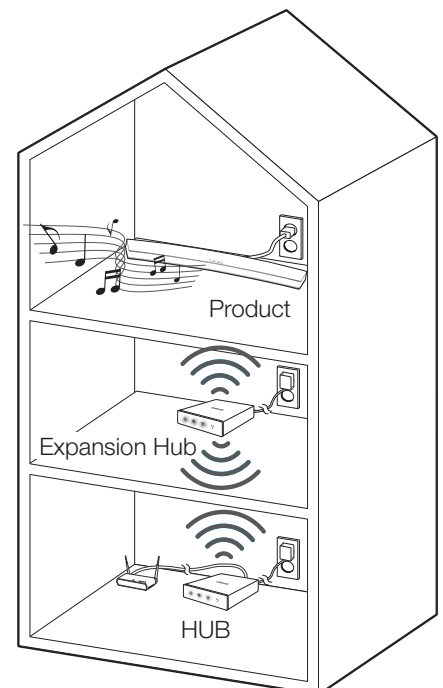
2 Plug in the new HUB you are using as an extender, and then press its **SPK ADD** button for 10 seconds.

3 The newly added HUB's LED indicators turn off and on, and it switches to Repeater mode.

4 Once the connection between the two HUBs has been established, the added HUB's (📶) indicator stops blinking.



- If your smart device is not connected to the wireless router with a Wi-Fi connection, the product will not appear on the **Samsung Multiroom** app.
- Place the HUB that is in Repeater mode in an appropriate location between the product and the HUB that is connected to the wireless router.
- You can set only one HUB to Repeater mode.
- The hub may not be available in several countries or regions. For purchase, please contact your nearest retailer or Samsung Service Centre.



USING THE SAMSUNG MULTIROOM APP

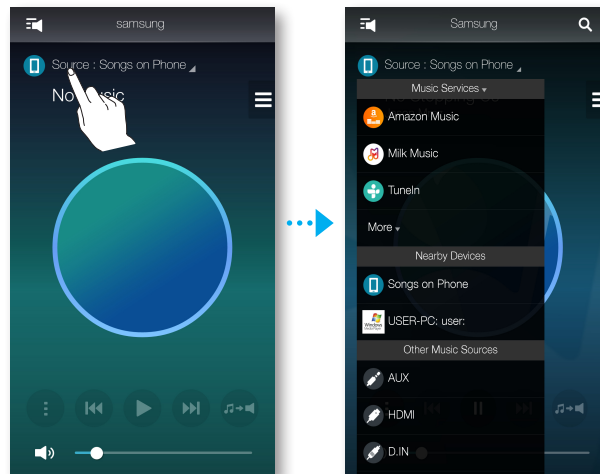
THE APP AT A GLANCE



SWITCHING THE INPUT SOURCE


You can change the input source (Music Services, Nearby Devices or other external device) for the selected product.

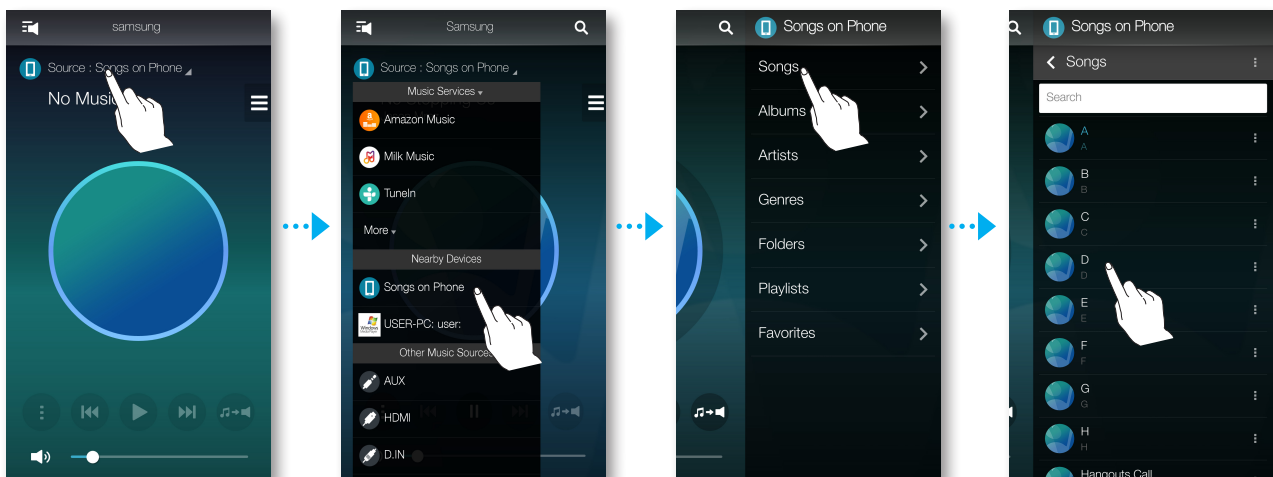
- 1 Press **Source**.
- 2 Select a source from the list of sources that appears.




PLAYING MUSIC

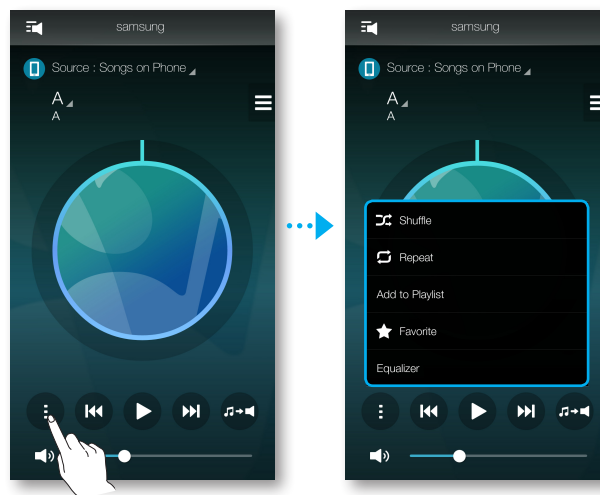
• Playing a music file stored in the smart device

- 1 Press **Source**.
- 2 Select the **Songs on Phone** (files stored in the smart device).
 - If the source is set to music of mobile phone, press .
- 3 Select your desired category.
 - **Songs** : Lists all the music files by name.
 - **Albums** : Lists all the music files by album.
 - **Artists** : Lists all the music files by artist.
 - **Genres** : Lists all the music files by genre.
 - **Folders** : Lists all the music files by stored folder.
 - **Playlists** : Lists all the music files by playlist.
 - **Favourites** : Lists all the music files marked as favourites.
- 4 After selecting a category, find and select your desired music.




Using playback menu

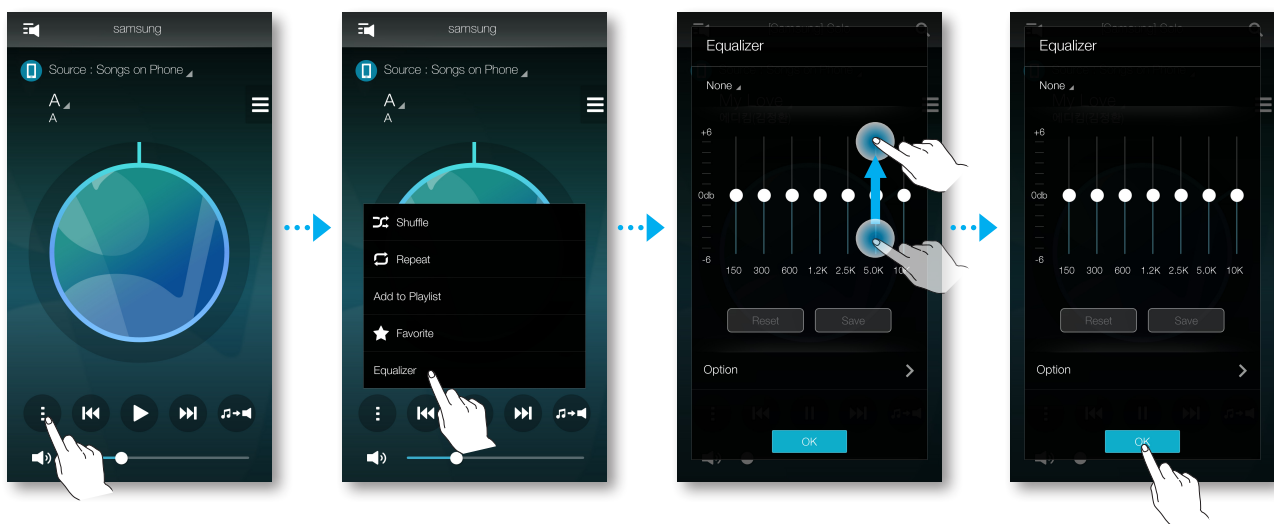
- 1 Press .
- 2 When a popup menu appears, select your desired function.
 - **Shuffle** : It randomly plays back music files from the standby list.
 - **Repeat** : It repeats the current music file or all the music files from the standby list.
 - **Add to Playlist** : Creates a new playlist or adds currently playing music into the current playlist.
 - **Favourite** : Adds the currently playing music file to the favourites list.
 - **Equaliser** : You can suitably adjust the volume of music currently playing by frequency depending on the genre, preference and place.



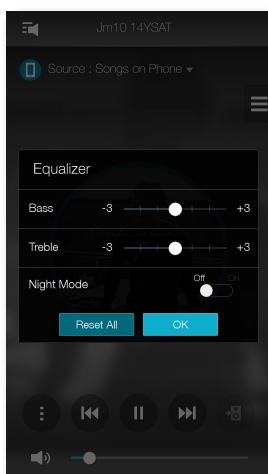
Adjusting Equaliser

You can create your own settings by selecting product's factory-default settings or adjusting the frequencies manually at your preference.

- 1 Press .
- 2 When a popup menu appears, press the **Equaliser**.
- 3 To adjust the bass or treble frequency ranges, drag the slider up or down.
- 4 Press **OK**.



<HW-H750, HW-H751 only>

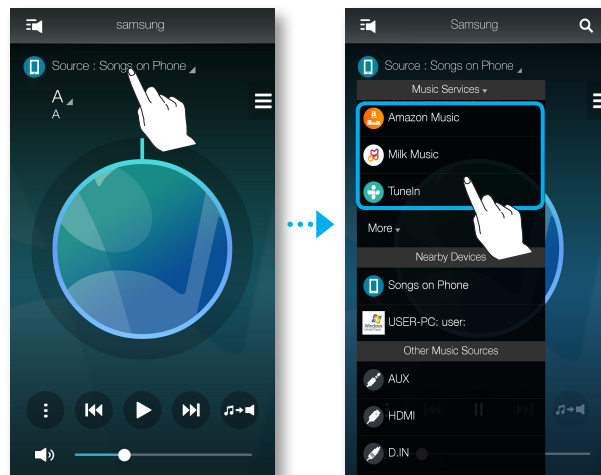


- The Equaliser is not available when speakers are grouped.

• Listening to streaming music

Listening to streaming music.

- 1 Press **Source**.
- 2 From the **Music Services**, select your desired service.



- Depending on your region or manufacturer, supported content services may differ.
- You may not subscribe to a service using your smart device.
To use a for-pay service, first subscribe to the service through your computer.

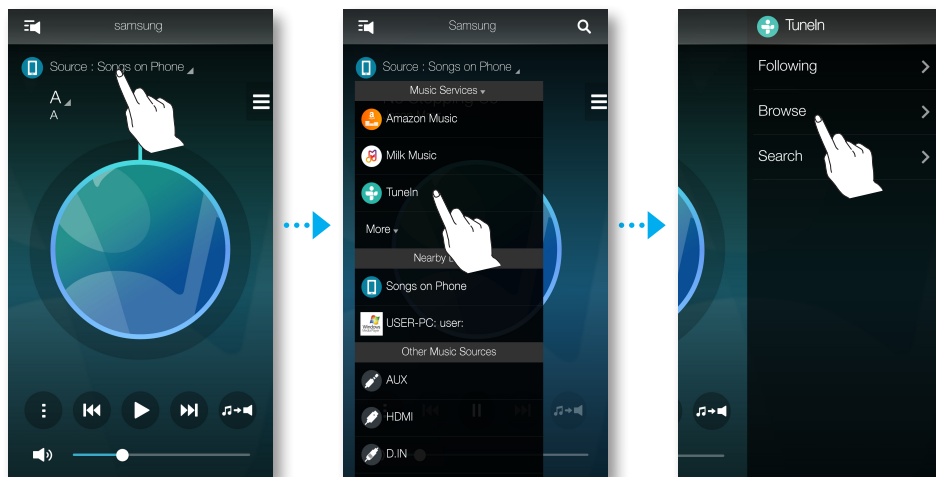
• Listening to music from nearby devices

You can listen to music stored on another device that is connected to the same network.

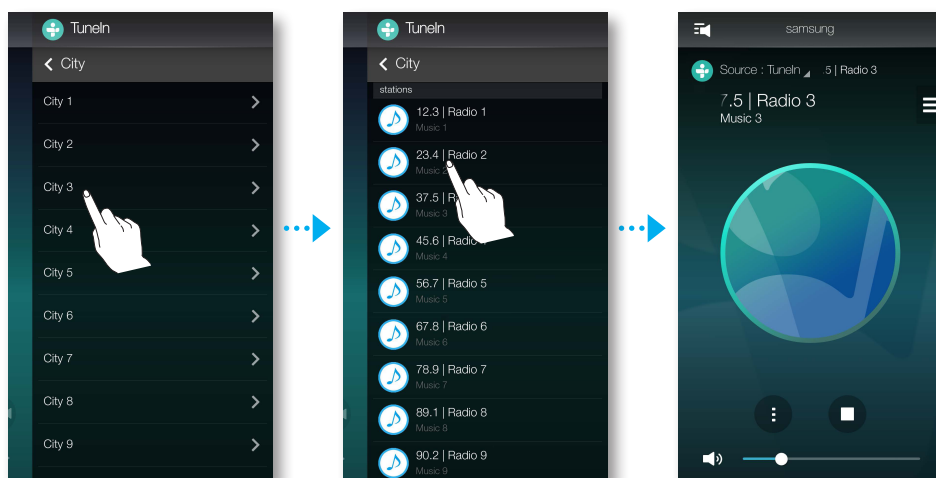
- 1 Press **Source**.
- 2 From the **Nearby Devices**, select the desired device.
- 3 You can play music files stored in your selected device through the product.

LISTENING TO THE INTERNET RADIO

- 1 Press **Source**.
- 2 Select **TuneIn**.
- 3 Select your desired category.
 - **Following** : Shows the list of stations added to the preset list or marked as you are following. By default, 3 radio stations are displayed in the preset list.
 - **Browse** : Lists all supported Internet radio stations.
 - **Search** : Allows you to search for a desired internet radio station using keypad input.




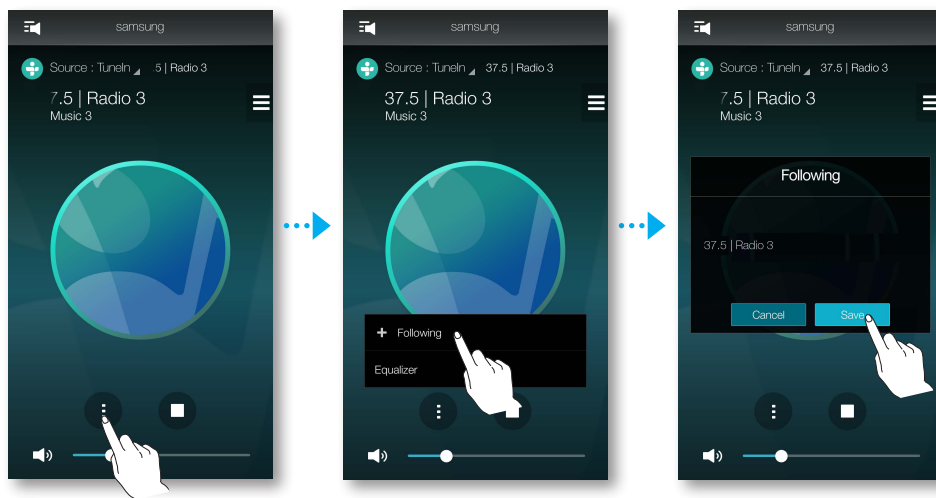
- 4 After selecting a category, find and select your desired station.



• Following station



You can add a channel to the **Following** list.

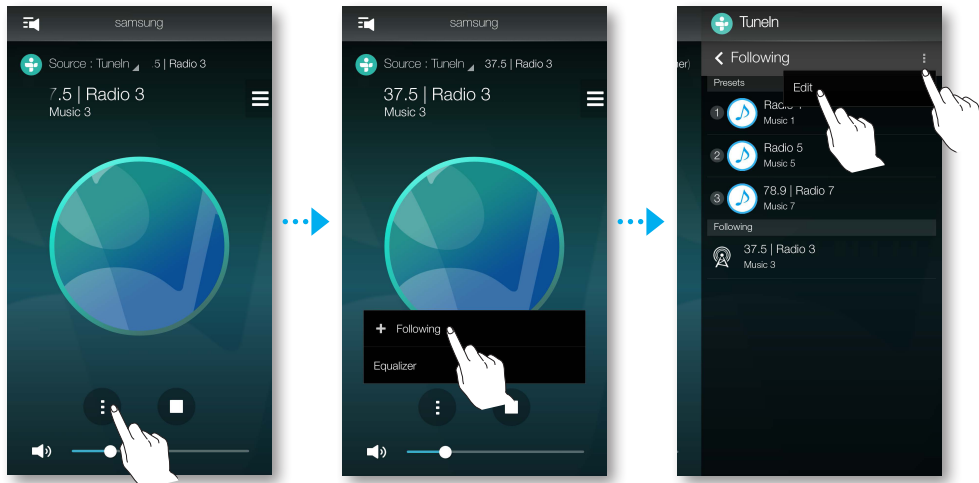
- 1 Select the desired channel.
- 2 Press  to display a popup menu, and then select **+ Following**.
- 3 Press **Save**.
 - The channel you are currently listening to is added to the **Following** list.



• Setting presets

You can add the internet radio channel you are following into the preset list, or rearrange the displaying order in the list.

- 1 Press  to display a popup menu, and then select **+ Following**.
- 2 Press , and then press **Edit**.





- 3 Drag the desired channel from the **Following** to the **Presets**.
- 4 To finish editing, press **Done**.

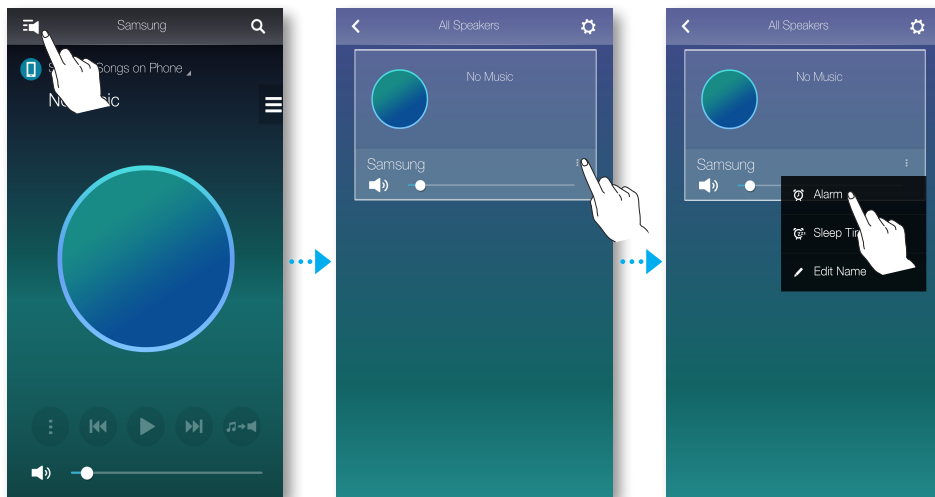


SETTING UP THE SPEAKER

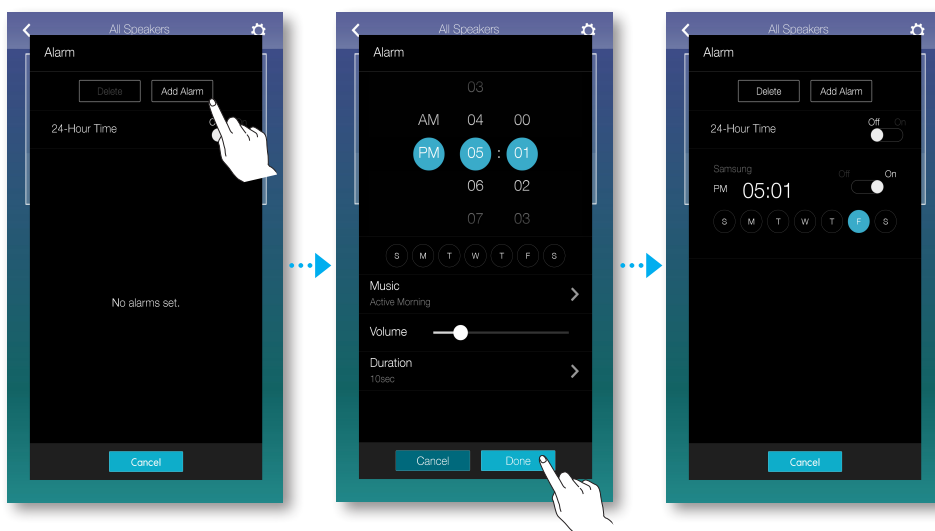
• Setting up the alarm

You can listen to sound services or radio broadcast channels at a specified time from a selected speaker.

- 1 Press  to view the list of all speakers.
- 2 Press  from a desired product and then press **Alarm** from the popup menu that appears.





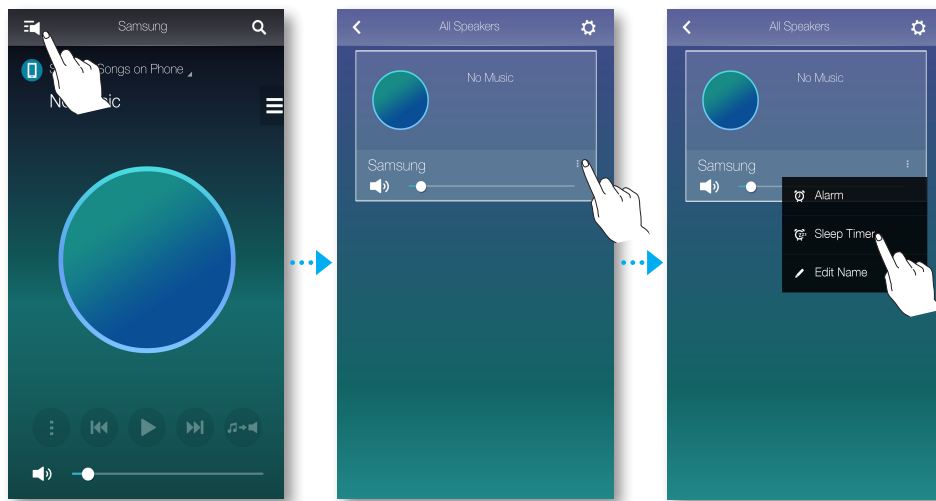
- 3 Press **Add Alarm** from the alarm list.
- 4 Press **Done** after setting up detail settings.



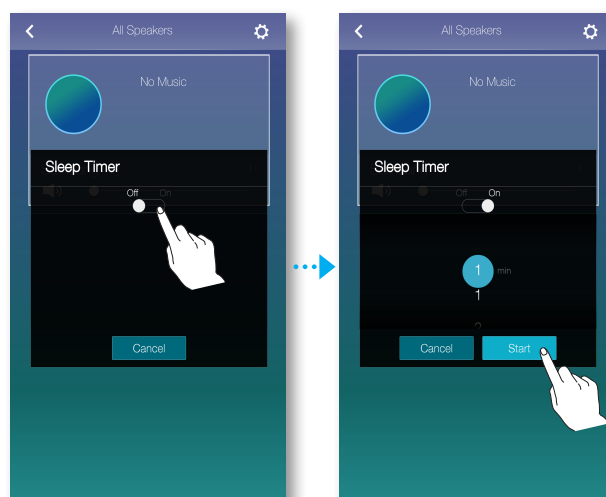
• Setting up bedtime

You can setup the speaker to automatically turn off a selected speaker after a specified time has elapsed.

- 1 Press  to view the list of all speakers.
- 2 Press  from a desired product and then press **Sleep Timer** from the popup menu that appears.





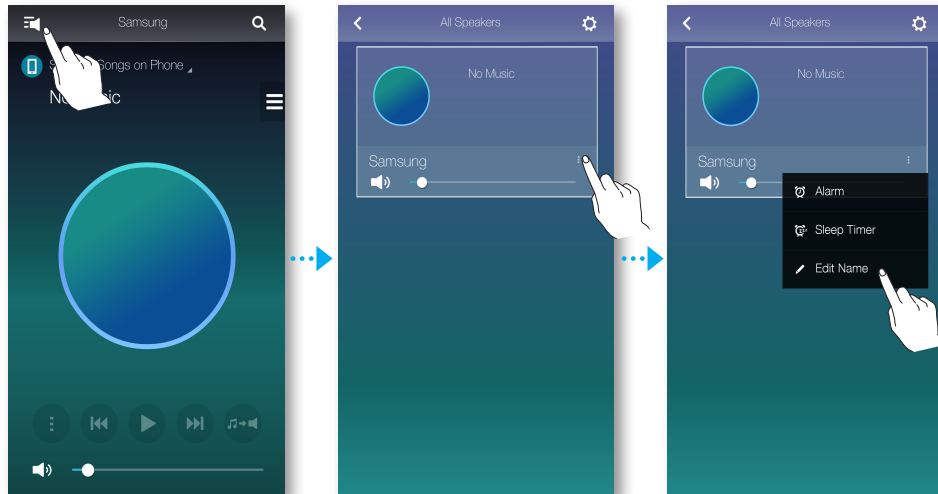
- 3 Select **On** and then setup a scheduled time.
 - You can set up to 90 minutes in minute units.
- 4 Press **Start**.



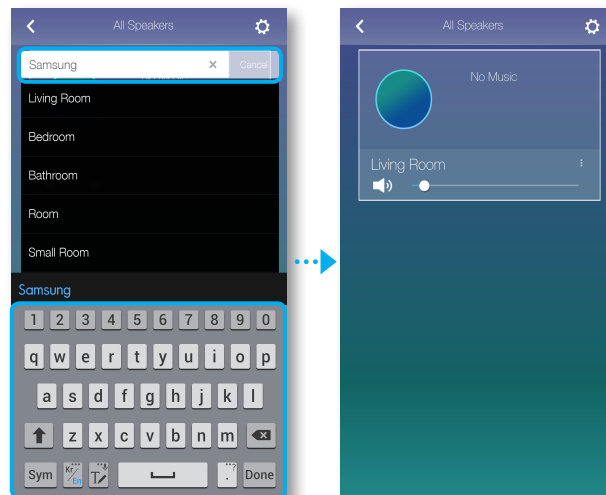
• Renaming product

You can change the name of the connected product.

- 1 Press  to view the list of all speakers.
- 2 Press  from a desired product and then press **Edit Name** from the popup menu that appears.

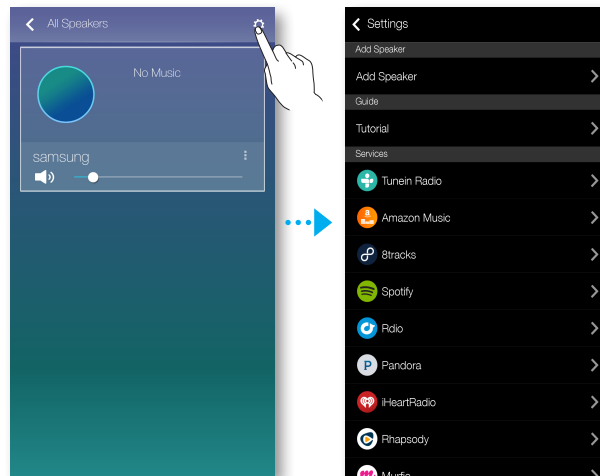


- 3 Either select a preset name from the list or use your keyboard to enter a desired name.



USING THE SETTINGS MENU

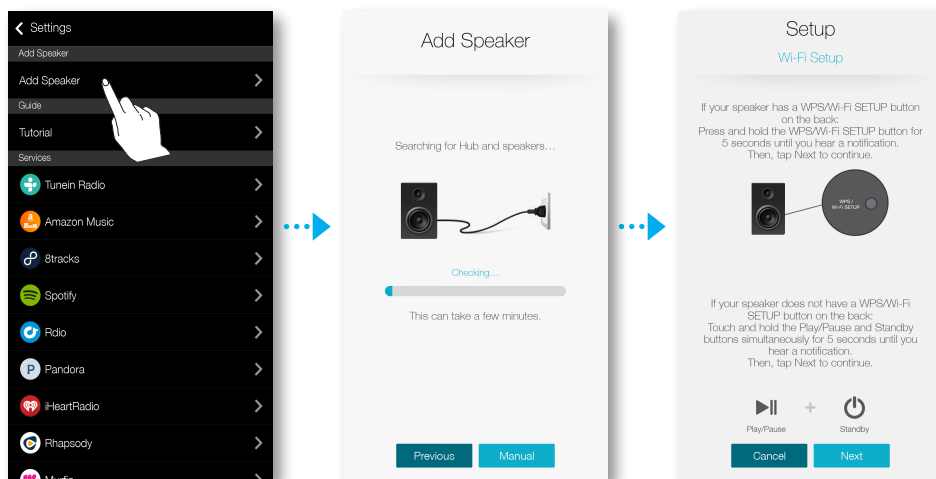
1 Press .



• Add Speaker

Add Speaker

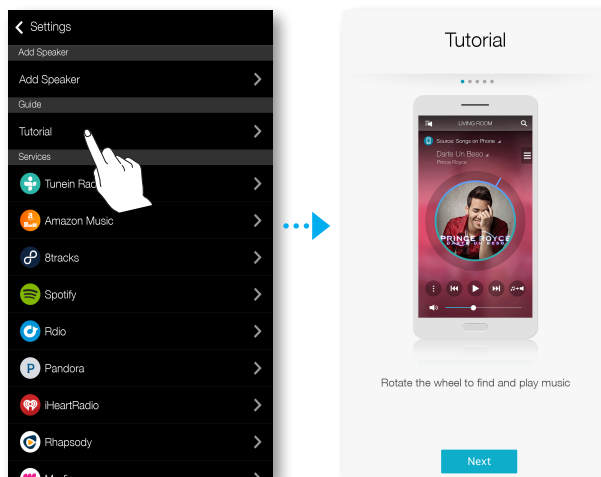
You can connect multiple products to the app.



• Guide

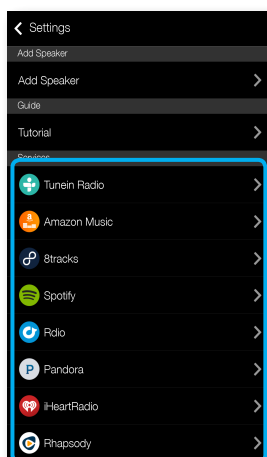
Tutorial

Select the **Tutorial** to learn how to use the app.



• Services

Displays a list of available services.

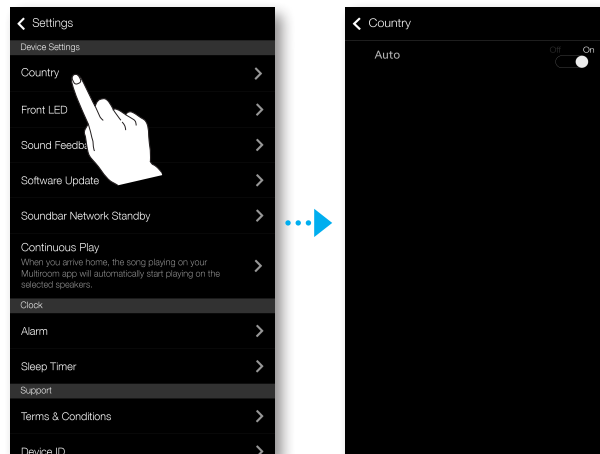


- Depending on your region or manufacturer, supported content services may differ.
- You may not subscribe to a service using your smart device.
To use a for-pay service, first subscribe to the service through your computer.

• Device Settings

Country

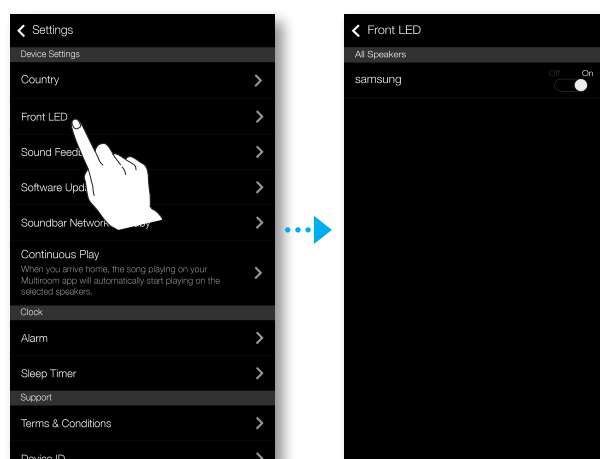
You can select the **Country**.



- Changing the country changes the available services. However, these services will not work if they are not available in the country you are located in.

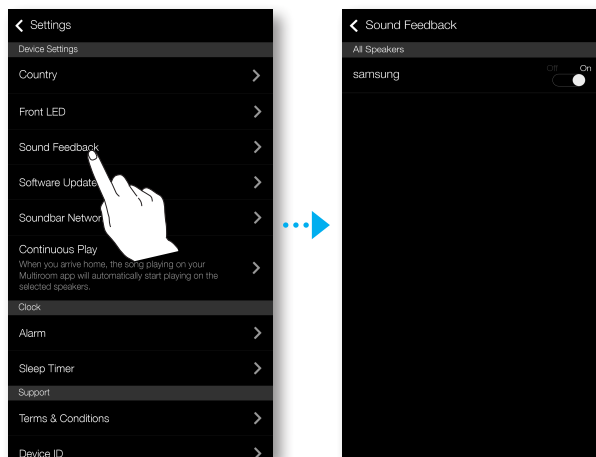
Front LED

- **Off** : Turns off the product's **Front LED** indicators.
- **On** : Turns on the product's **Front LED** indicators.



Sound Feedback

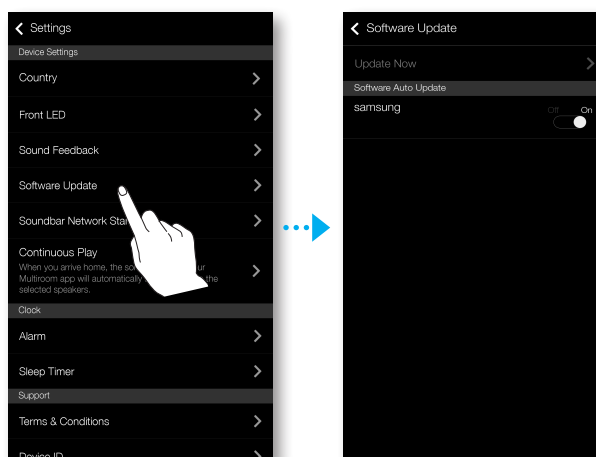
- **Off** : Turns off the **Sound Feedback**.
- **On** : Turns on the **Sound Feedback**.



Software Update

Shows the product's current software version, and lets you turn auto update on or off.

- **On** : When on, automatically updates the software when new firmware is released.
- **Off** : Turns off the auto update function.



- Auto update is available when your product is connected to a network and the **Software Auto Update** function is set to **On**.




- It is strongly recommended that **Software Auto Update** settings on all the products used are set to **On**. Problems with networked functions (such as Group Play) may otherwise occur due to incompatibility issues when a variety of product software versions is used on linked products.
- **Software Auto Update** will only update the speaker when the speaker is in standby mode.

To manually place the speaker in standby mode.

- 1) Set the **Software Auto Update** to **On**.
- 2) Press the **SPK ADD** button from the back of the product for 5 seconds.
The software will automatically update after the product reboots.

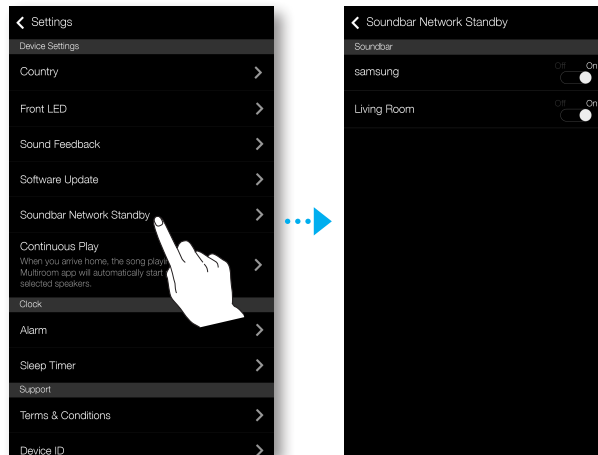
Update Now

You can update your speaker's software manually using **Update Now**.

- 1 Press .
- 2 Select **Software Update**.
- 3 Select **Update Now**.
- 4 **Update Now** searches for a current software update. If an update is available, it will download and install the update on your speaker. If you already have the most current software on you speaker, **Update Now** displays "Latest version already installed."

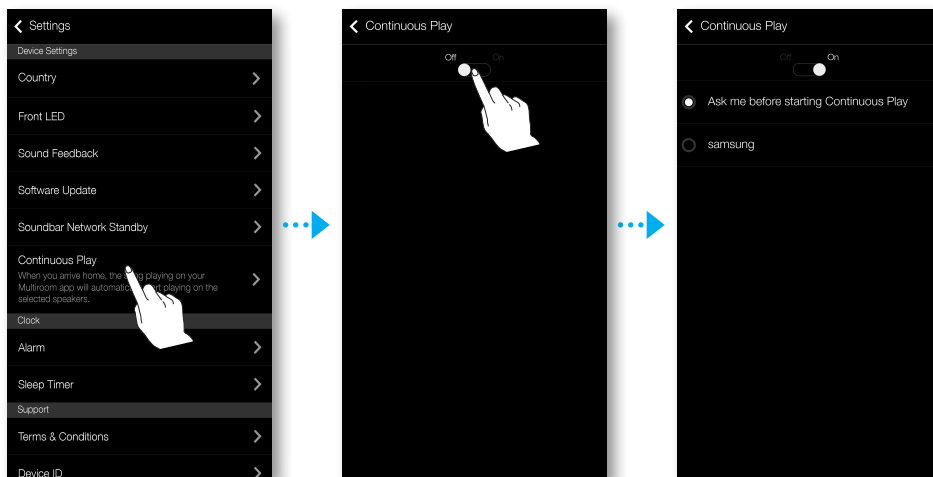
Soundbar Network Standby

You can turn the **Soundbar Network Standby** mode of the connected speaker on or off. As long as the Soundbar Network Standby mode is enabled even if the speaker power is off, the provided power auto on feature will allow the speaker to be turned on automatically when a speaker is selected or alarm is setup.



Continuous Play

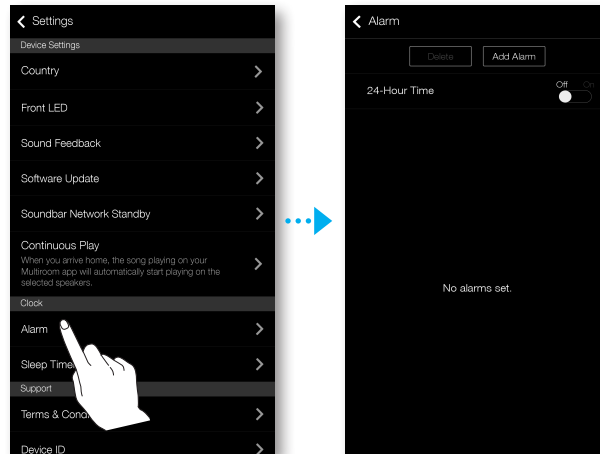
You can relay currently playing music to a selected product.



• Clock

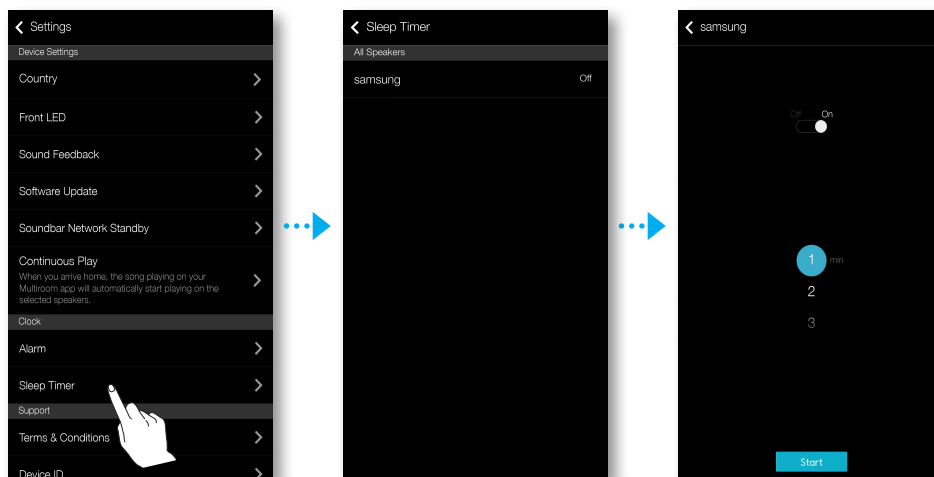
Alarm

Lets you set the **Alarm**.



Sleep Timer

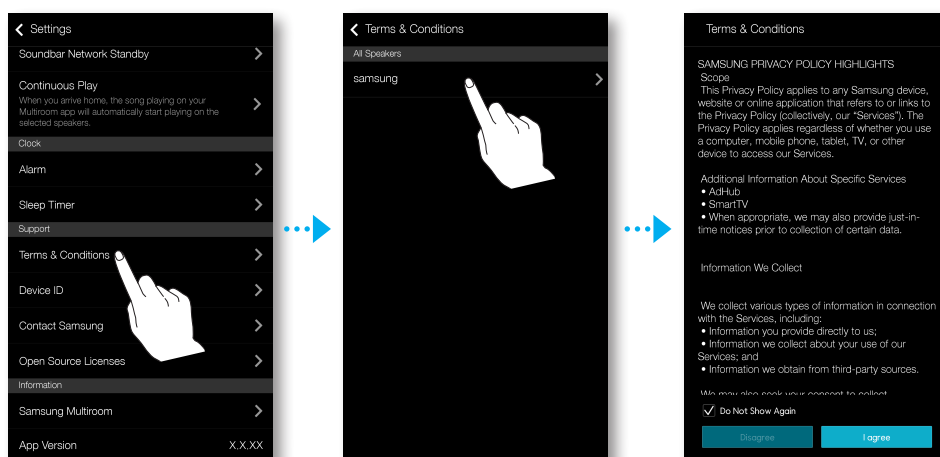
Lets you set the **Sleep Timer**.



• Support

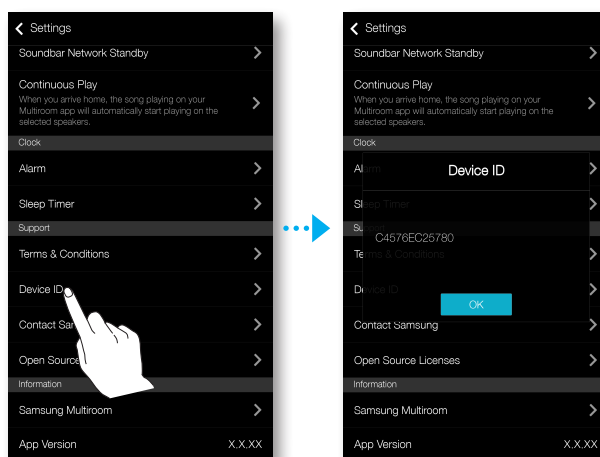
Terms & Conditions

You can check the full contents of the user agreement of all connected room speakers or Soundbars.



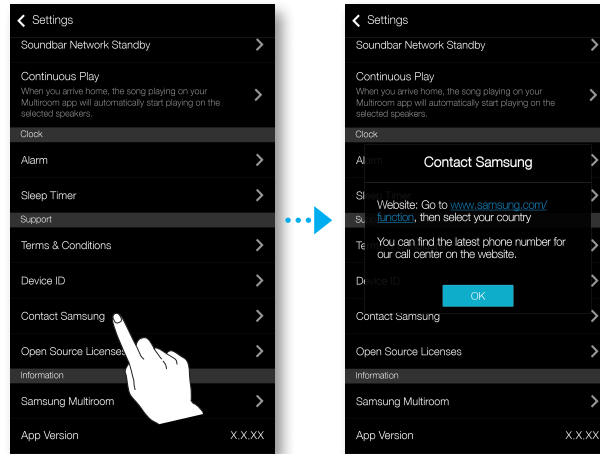
Device ID

Lets you check the Device ID.



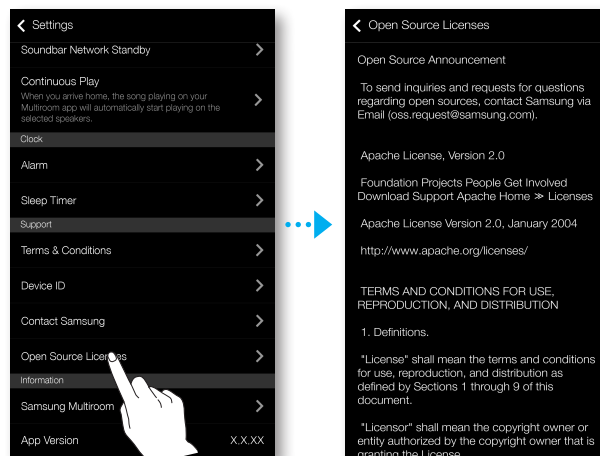
Contact Samsung

Provides a link to the Samsung website.



Open Source Licenses

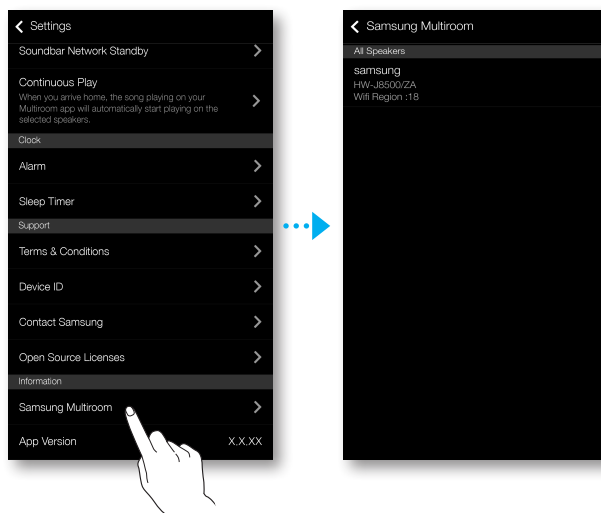
Lets you view the **Open Source Licenses**.



• Information

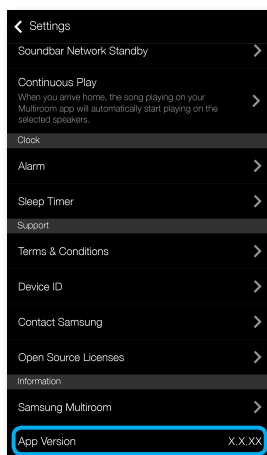
Samsung Multiroom

Allows you to check the version number of the speaker.



App Version


Allows you to check the **Samsung Multiroom** app version.

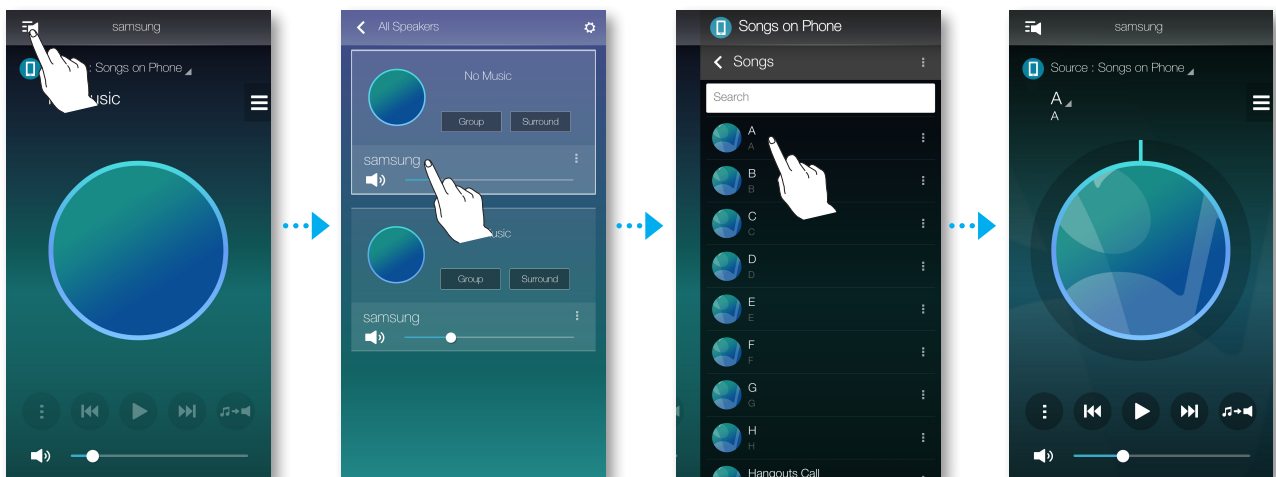


CONNECTING MULTIPLES PRODUCTS

SELECTING THE PRODUCT


You can select the desired one from connected products and set the input source for playback.

- 1 Press  to go to the list of all products.
- 2 Select the desired product.
- 3 If no input source is assigned to the selected product, the music files stored in the smart device are listed up. Select the desired music file to play.
 - The selected product reproduces the music.




• Selecting another product for playback

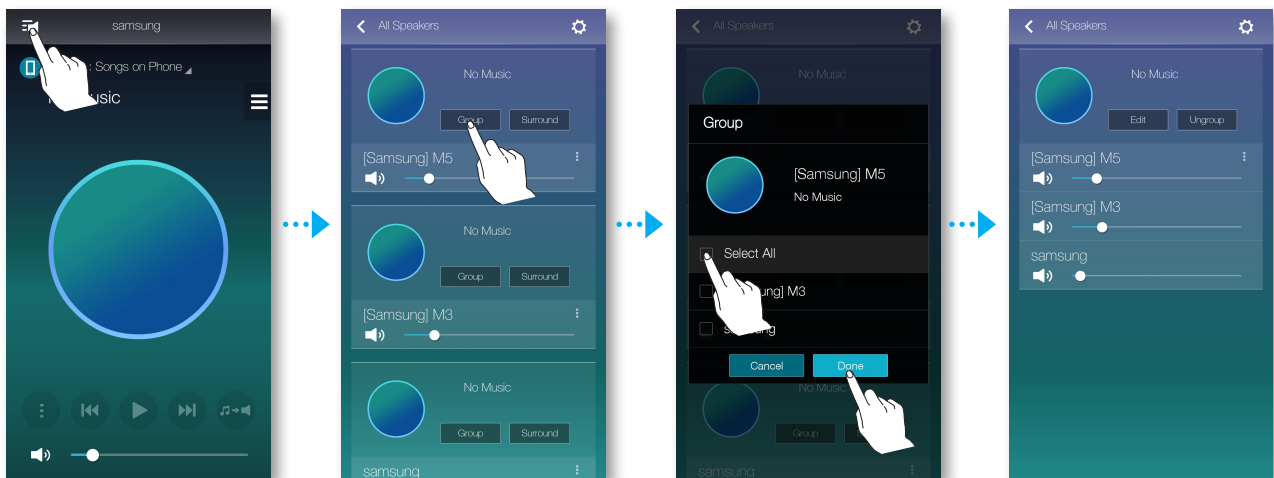
Use this function to assign currently playing input source to another product.

- 1 From the playback screen, press .
- 2 Select the desired product.

SETTING GROUPS

You can group multiple speakers into one group that plays the same music. Grouping is available only when multiple speakers are connected to the same network.


- 1 Press  to go to the list of all products.
- 2 Press **Group**.
- 3 Select other products to add into the group, and then press **Done**.

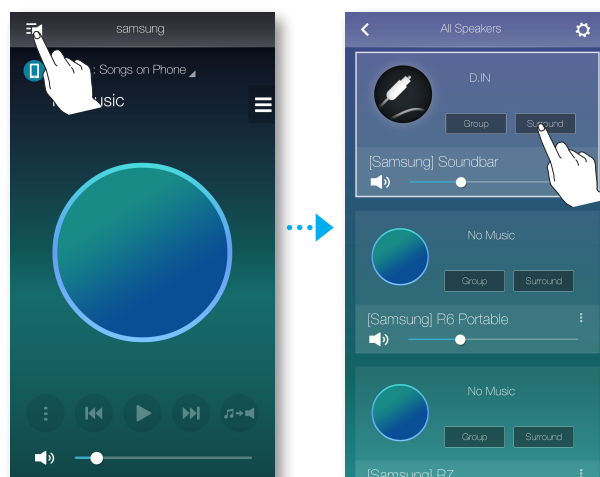


- Group playback is not available for Bluetooth and TV SoundConnect, AUX IN connections.
- A speaker can be added to one group only.

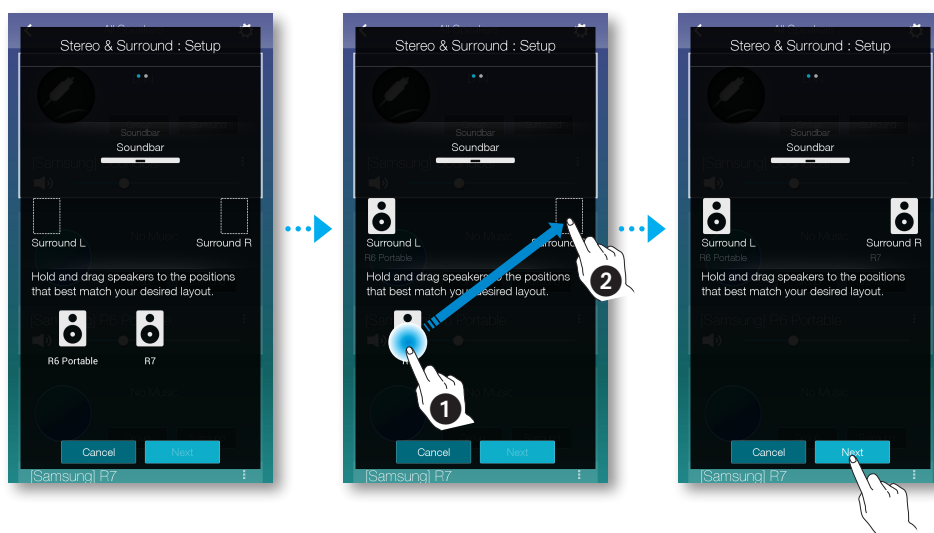
SETTING THE SURROUND SOUND MODE

You can configure multiple products for surround sound effect.

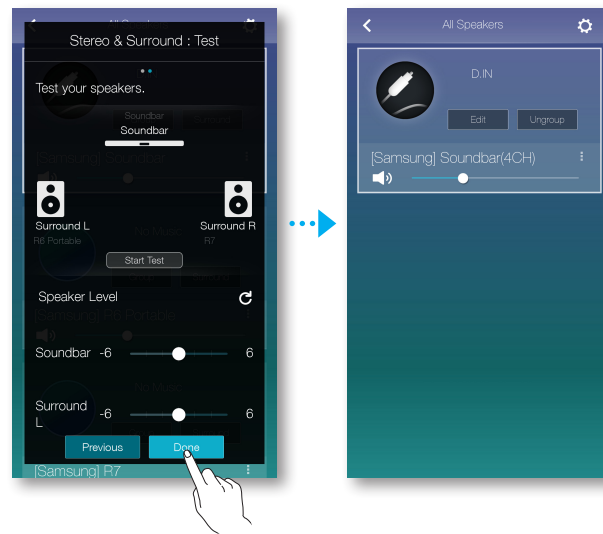
- 1 Press  to go to the list of all products.
- 2 Press **Surround**.



- 3 Press and hold a product, and drag it to the desired place and then select **Next**.



4 Test products and adjust product volume, and then press **Done**.



- The **Surround** mode works only in the HDMI or D.IN modes of the Soundbar.
- Additional multi-room speakers are required to operate the **Surround** mode and additional multi-room speakers are sold separately.
- The **Surround** mode may be cancelled automatically if the network connection is unstable.
- When enabling the Surround Sound mode, it is recommended to assign the products the same output for **Front L** and **Front R**.

USING MISCELLANEOUS FUNCTIONS

PLAYING MEDIA CONTENT SAVED IN A PC

• Wireless Audio - Multiroom for Desktop

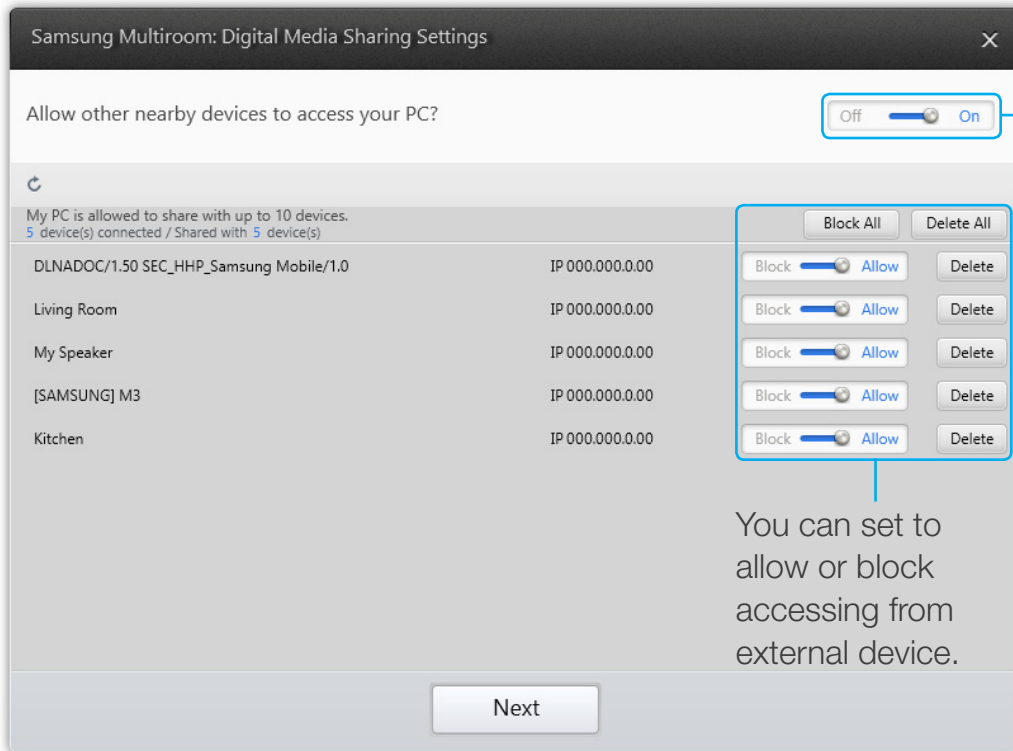
To play iTunes system and shared PC music files through product, install the **Wireless Audio - Multiroom for Desktop** program.

Visit www.samsung.com to download the **Wireless Audio - Multiroom for Desktop** program and install it.

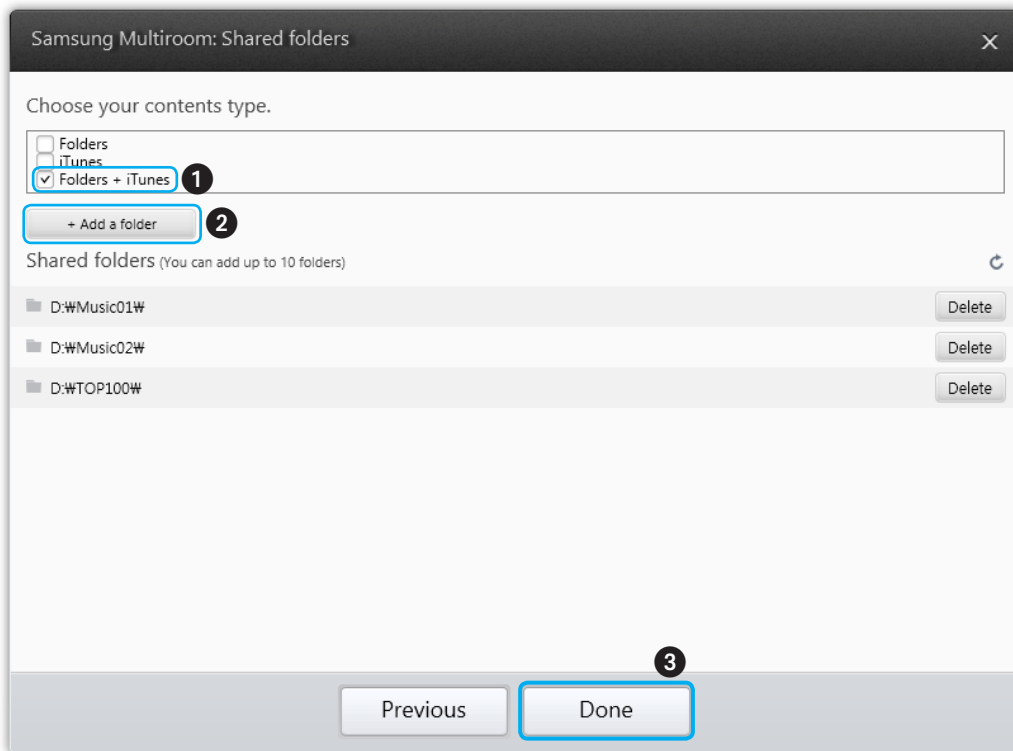


- Note that the PC containing the shared folders and your product must be connected to the same wireless router.
- If the connected Windows PC or the Mac switches to off-display mode, power saving or hibernation mode, the App will stop.
- If the firewall of the Windows computer is activated, the App may not work. In such a case, deactivate the firewall of Windows or other vaccine firewall.
- The *.pkg file is for Mac while *.msi is for Windows installation. Download the appropriate file for your computer and install it.
- Supported OS: Windows 7 or higher, Mac OS X 10.7 or later.

- 1 Double click the icon created on the PC's desktop.
- 2 Select **Next** to set the shared folders.





- 3 Select the content type and add the selected folder to the shared folders list. After sharing folders, make sure to press the **Done** button.



- 4 On your Smart device, select the **Samsung Multiroom** app.
- 5 Select desired PC on the **Samsung Multiroom** app, and shared folders and files stored in the PC will be displayed. (For further details, refer to page 24)



- After adding or changing contents of shared folders, make sure to press the  button.

If you don't press the  button, the files shared by a computer device may not be displayed in the **Samsung Multiroom** app.

TROUBLESHOOTING

Before requesting service, please check the following.

The unit will not turn on.

- | | |
|--|---|
| <ul style="list-style-type: none"> Is the power cord plugged into the outlet? | → Connect the power cord to the outlet. |
|--|---|

Sound is not produced.

- | | |
|---|---|
| <ul style="list-style-type: none"> Is the Mute function on? | → Press the Mute button to cancel the function. |
| <ul style="list-style-type: none"> Is the volume set to minimum? | → Adjust the Volume. |

HUB doesn't work properly.

- | | |
|---|---|
| <ul style="list-style-type: none"> Is the HUB plugged in? | → Plug in the HUB. |
| <ul style="list-style-type: none"> Is the LAN cable connected to the wireless router and the HUB properly? | → Connect the LAN cable to the ETHERNET SWITCH on the back of the HUB and to your wireless router. |
| <ul style="list-style-type: none"> When the Hub is plugged in, do the HUB's front indicators show it's operating properly? | → Reset the HUB.
→ If you experience troubles with connecting the HUB and product, try relocating the product so that the product is closer to the wireless router or HUB. |

App doesn't work properly

- | | |
|---|---|
| <ul style="list-style-type: none">• Does an error occur when accessing the app? | <ul style="list-style-type: none">➔ Make sure your smart device is compatible with the app.➔ Make sure the app is the latest version.➔ If used with a HUB<ul style="list-style-type: none">- Make sure the HUB and the smart device are connected to same router.- Make sure the HUB's indicator LED's show that it is working correctly.- If you experience troubles with connecting the HUB and Soundbar, try relocating the Soundbar so that the Soundbar is closer to the wireless router or HUB. |
|---|---|

Soundbar doesn't work properly

<ul style="list-style-type: none"> • Is the Soundbar plugged in? 	<ul style="list-style-type: none"> ➔ Check whether the Wi-Fi router you're using had been certified for Wi-Fi. ➔ Unplug the Soundbar, plug it back in, and then reconnect it to the router. ➔ If used with a HUB <ul style="list-style-type: none"> - Make sure the smart device and the HUB are connected to the same Wi-Fi network. - Make sure the HUB's indicator LED's show that it is working correctly. - If the problem persists, reset the HUB. - Unplug, then plug in the HUB. Then, unplug and plug in the Soundbar. - If you experience troubles with connecting the HUB and Soundbar, try relocating the Soundbar so that the Soundbar is closer to the wireless router or HUB.
---	---

I cannot group speakers.

<ul style="list-style-type: none"> • Is the product connected to the network via Wi-Fi? 	<ul style="list-style-type: none"> ➔ If the product is connected to the network via Bluetooth, TV SoundConnect, or AUX IN, you cannot use the group speakers function.
--	---



- If the problem persists, consult the service centre for troubleshooting.



Contact SAMSUNG WORLD WIDE

If you have any questions or comments relating to Samsung products, please contact the SAMSUNG customer care Centre.

Area	Contact Centre ☎	Web Site
■ Europe		
U.K	0330 SAMSUNG (7267864)	www.samsung.com/uk/support
EIRE	0818 717100	www.samsung.com/ie/support
GERMANY	0180 6 SAMSUNG bzw. 0180 6 7267864* (*0,20 €/Anruf aus dem dt. Festnetz, aus dem Mobilfunk max. 0,60 €/Anruf)	www.samsung.com/de/support
FRANCE	01 48 63 00 00	www.samsung.com/fr/support
ITALIA	800-SAMSUNG (800.7267864)	www.samsung.com/it/support
SPAIN	0034902172678	www.samsung.com/es/support
PORTUGAL	808 20 7267	www.samsung.com/pt/support
LUXEMBURG	261 03 710	www.samsung.com/support
NETHERLANDS	0900-SAMSUNG (0900-7267864) (€ 0,10/Min)	www.samsung.com/nl/support
BELGIUM	02-201-24-18	www.samsung.com/be/support (Dutch) www.samsung.com/be_fr/support (French)
NORWAY	815 56480	www.samsung.com/no/support
DENMARK	70 70 19 70	www.samsung.com/dk/support
FINLAND	030-6227 515	www.samsung.com/fi/support
SWEDEN	0771 726 7864 (0771-SAMSUNG)	www.samsung.com/se/support
POLAND	801-172-678* lub +48 22 607-93-33 * * (koszt połączenia według taryfy operatora)	www.samsung.com/pl/support
HUNGARY	0680SAMSUNG (0680-726-786) 0680PREMIUM (0680-773-648)	www.samsung.com/hu/support
SLOVAKIA	0800 - SAMSUNG (0800-726 786)	www.samsung.com/sk/support
AUSTRIA	0800-SAMSUNG (0800-7267864) [Only for Premium HA] 0800-366661 [Only for Dealers] 0810-112233	www.samsung.com/at/support

Area	Contact Centre ☎	Web Site
SWITZERLAND	0800 726 78 64 (0800-SAMSUNG)	www.samsung.com/ch/support (German) www.samsung.com/ch_fr/support (French)
CZECH	800 - SAMSUNG (800-726786) Samsung Electronics Czech and Slovak, s.r.o. V Parku 2343/24, 148 00 - Praha 4	www.samsung.com/cz/support
CROATIA	072 726 786	www.samsung.com/hr/support
BOSNIA	055 233 999	www.samsung.com/support
MONTENEGRO	020 405 888	www.samsung.com/support
SLOVENIA	080 697 267 (brezplačna številka) 090 726 786 (0,39 EUR/min) klicni center vam je na voljo od ponedeljka do petka od 9. do 18. ure.	www.samsung.com/si
SERBIA	011 321 6899	www.samsung.com/rs/support
BULGARIA	800 111 31 , Безплатна телефонна линия	www.samsung.com/bg/support
ROMANIA	08008 726 78 64 (08008 SAMSUNG) Apel GRATUIT	www.samsung.com/ro/support
CYPRUS	8009 4000 only from landline, toll free	
GREECE	80111-SAMSUNG (80111 726 7864) only from land line (+30) 210 6897691 from mobile and land line	www.samsung.com/gr/support
LITHUANIA	8-800-77777	www.samsung.com/lt/support
LATVIA	8000-7267	www.samsung.com/lv/support
ESTONIA	800-7267	www.samsung.com/ee/support



[Correct disposal of batteries in this product]

(Applicable in countries with separate collection systems)

This marking on the battery, manual or packaging indicates that the batteries in this product should not be disposed of with other household waste at the end of their working life. Where marked, the chemical symbols Hg, Cd or Pb indicate that the battery contains mercury, cadmium or lead above the reference levels in EC Directive 2006/66.

If batteries are not properly disposed of, these substances can cause harm to human health or the environment.

To protect natural resources and to promote material reuse, please separate batteries from other types of waste and recycle them through your local, free battery return system.



**Correct Disposal of This Product
(Waste Electrical & Electronic Equipment)**

(Applicable in countries with separate collection systems)

This marking on the product, accessories or literature indicates that the product and its electronic accessories (e.g. charger, headset, USB cable) should not be disposed of with other household waste at the end of their working life. To prevent possible harm to the environment or human health from uncontrolled waste disposal, please separate these items from other types of waste and recycle them responsibly to promote the sustainable reuse of material resources.

Household users should contact either the retailer where they purchased this product, or their local government office, for details of where and how they can take these items for environmentally safe recycling.

Business users should contact their supplier and check the terms and conditions of the purchase contract. This product and its electronic accessories should not be mixed with other commercial wastes for disposal.