

LED TV

Installation manual

imagine the possibilities

Thank you for purchasing this Samsung product.
To receive more complete service, please
register your product at

www.samsung.com/register

Model _____ Serial No. _____

SAMSUNG

Figures and illustrations in this User Manual are provided for reference only and may differ from actual product appearance. Product design and specifications may be changed without notice.

Instruction

This TV B2B (Business to Business) model is designed for hotels or the other hospitality businesses, supports a variety of special functions, and lets you limit some user (guest) controls.

Operational Modes

This TV has two modes : Interactive and Stand-alone mode.

- Stand-alone mode : In this mode, this TV works alone without an external SBB or the STB.

The TV has a Hotel (Hospitality) Menu that lets you easily set its various hospitality functions. Please see pages 16 to 17.

The Menu also lets you activate or de-activate some TV and hospitality functions so you can create your optimal hospitality configuration.

Still image warning

Avoid displaying still images (like jpeg picture files) or still image elements (like TV Programme such as TV Programme logos, the panorama or 4:3 image format, stock or news bars at the bottom of the screen etc.) on the screen. Constantly displaying still pictures can cause uneven wear of the screen phosphor, which will affect the image quality. To reduce risk of this effect, please follow the recommendations below:

- Avoid displaying the same TV channel for long periods.
- Always try to display any image over the full screen, use the TV set picture format menu for the best possible match.
- Reduce the brightness and contrast values to the minimum required values to achieve the desired picture quality. Exceeding these values may speed up the burnout process.
- Frequently use all TV features designed to reduce image retention and screen burnout, refer to the appropriate user manual section for more details.

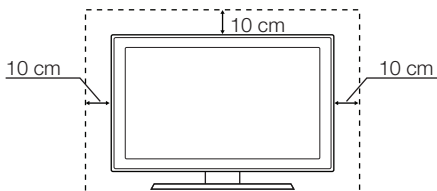
Securing the Installation Space

Keep the required distances between the product and other objects (e.g. walls) to ensure proper ventilation.

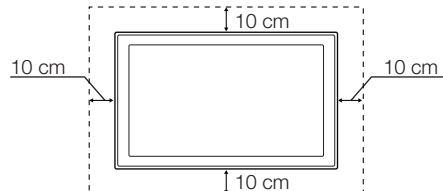
Failing to do so may result in fire or a problem with the product due to an increase in the internal temperature of the product.

- When using a stand or wall-mount, use parts provided by Samsung Electronics only.
 - If you use parts provided by other manufacturers, it may result in a problem with the product or an injury due to the product falling.
- The appearance may differ depending on the product.

Installation with a stand.





Installation with a wall-mount.



Contents

- Instruction 2
- Operational Modes 2
- Still image warning..... 2
- Securing the Installation Space..... 2
- Accessories 4
- Installing the LED TV Stand..... 4
- Using the TV's Controller 13
- Viewing the Remote Control 14
- Setting the Hotel Option Data 16
- Installing the Wall Mount 23
- Securing the TV to the Wall..... 24
- Anti-theft Kensington Lock 24
- Specifications 25

	<p>Correct Disposal of This Product (Waste Electrical & Electronic Equipment) (Applicable in the European Union and other European countries with separate collection systems)</p> <p>This marking on the product, accessories or literature indicates that the product and its electronic accessories (e.g. charger, headset, USB cable) should not be disposed of with other household waste at the end of their working life. To prevent possible harm to the environment or human health from uncontrolled waste disposal, please separate these items from other types of waste and recycle them responsibly to promote the sustainable reuse of material resources. Household users should contact either the retailer where they purchased this product, or their local government office, for details of where and how they can take these items for environmentally safe recycling. Business users should contact their supplier and check the terms and conditions of the purchase contract. This product and its electronic accessories should not be mixed with other commercial wastes for disposal.</p>
	<p>Correct disposal of batteries in this product (Applicable in the European Union and other European countries with separate battery return systems.)</p> <p>This marking on the battery, manual or packaging indicates that the batteries in this product should not be disposed of with other household waste at the end of their working life. Where marked, the chemical symbols Hg, Cd or Pb indicate that the battery contains mercury, cadmium or lead above the reference levels in EC Directive 2006/66. If batteries are not properly disposed of, these substances can cause harm to human health or the environment. To protect natural resources and to promote material reuse, please separate batteries from other types of waste and recycle them through your local, free battery return system.</p>

Accessories

- Please make sure the following items are included with your LED TV. If any items are missing, contact your dealer.
The items' colours and shapes may vary depending on the model.

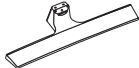
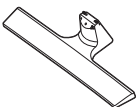


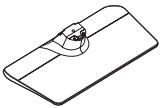
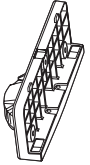

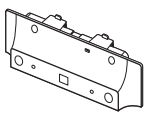


- Safety Guide (Not available in some locations)
- Bracket-Wall (Only for HG24/28AD450)
- Wall-Mount Kit (Only for HG24/28AD450)
- Spacer-Felt (Only for HG24/28AD450)
- VESA Standard (Only for HG24/28AD450)
- Wall Mount Quick setup guide (Only for HG24/28AD450)
- Quick Setup Guide
- Guide Stand
- Screws
- Stand
- Remote Control & Batteries (AAA x 2)
- Power Cord

- The stand and stand screws may not be included depending on the model.
The Data Cable may not be included depending on the SI Vendor.

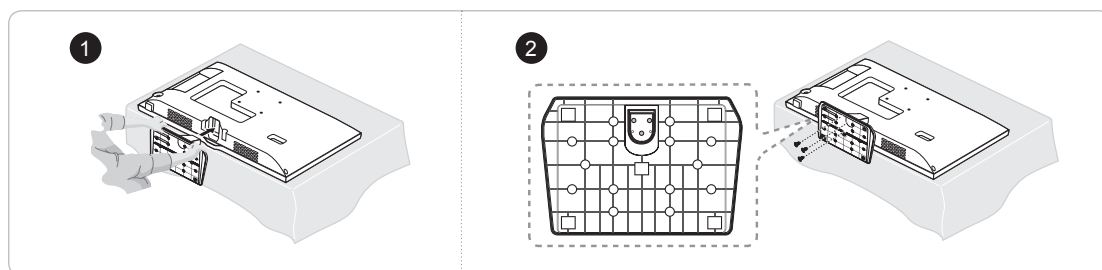
Installing the LED TV Stand

Stand Components

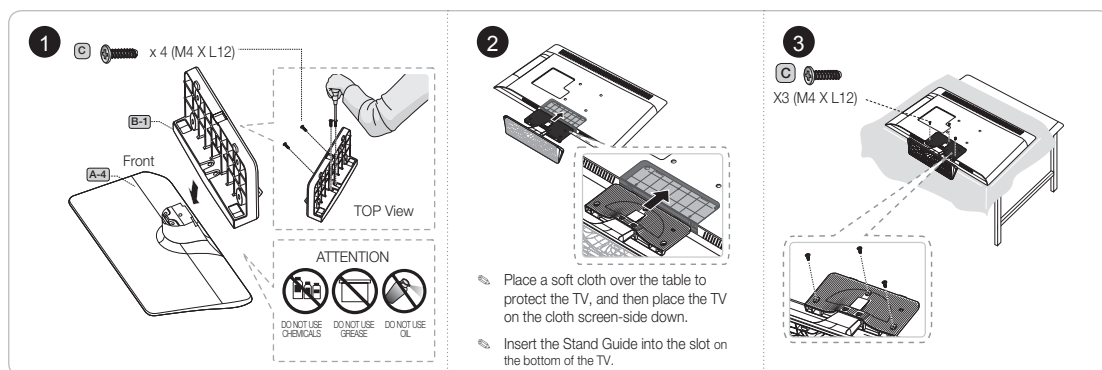
When installing the stand, use the provided components and parts.

<div data-bbox="171 788 259 813">A-1 1 EA</div>  <p>HG24AD450</p> <div data-bbox="495 896 583 921">A-2 1 EA</div>  <p>HG28AD450</p> <div data-bbox="171 977 259 1002">A-3 1 EA</div>  <p>HG24ED450</p> <div data-bbox="495 1083 583 1108">A-5 1 EA</div>  <p>HG*D450</p> <div data-bbox="171 1137 259 1163">A-4 1 EA</div>  <p>HG28ED450</p>	<div data-bbox="806 734 889 759">B-1 1 EA</div>  <p>HG**ED450, HG40AD450</p> <div data-bbox="806 971 889 996">B-2 1 EA</div>  <p>HG24AD450</p> <div data-bbox="806 1151 889 1176">B-3 1 EA</div>  <p>HG28AD450</p>	<div data-bbox="1071 944 1208 969">C</div>  <p>M4 X L12</p>  <p>M4 x L14</p>
Stand	Guide Stand	Screws

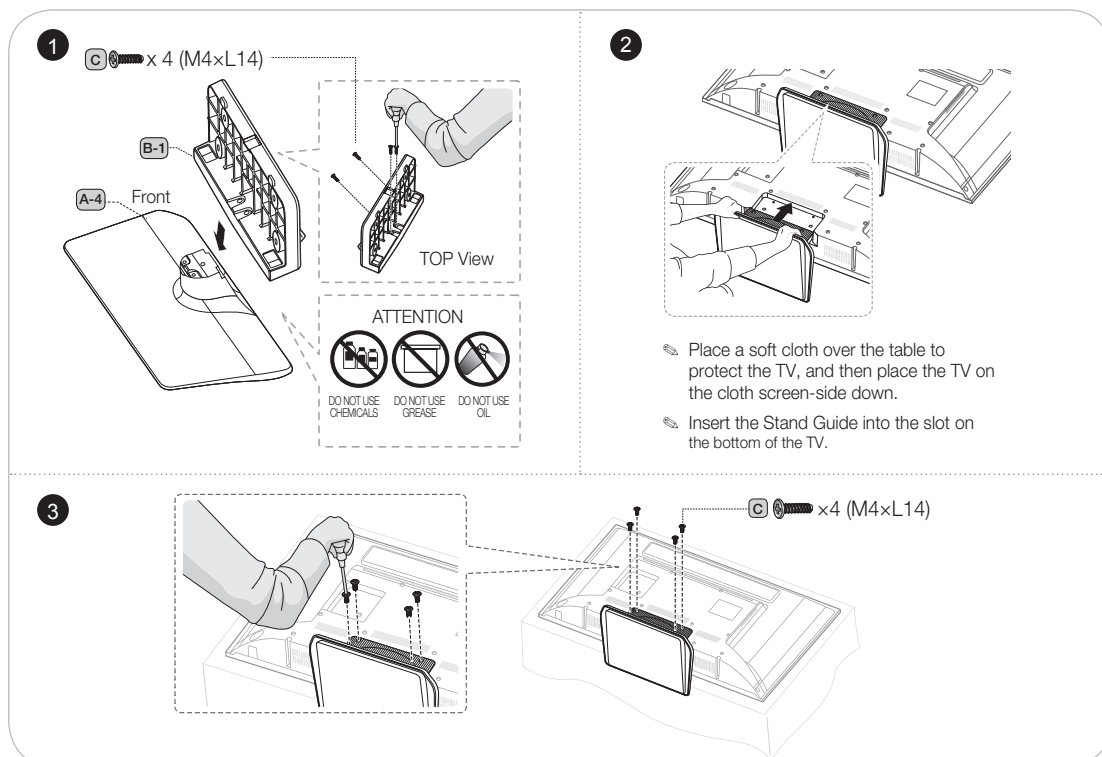
HG24ED450



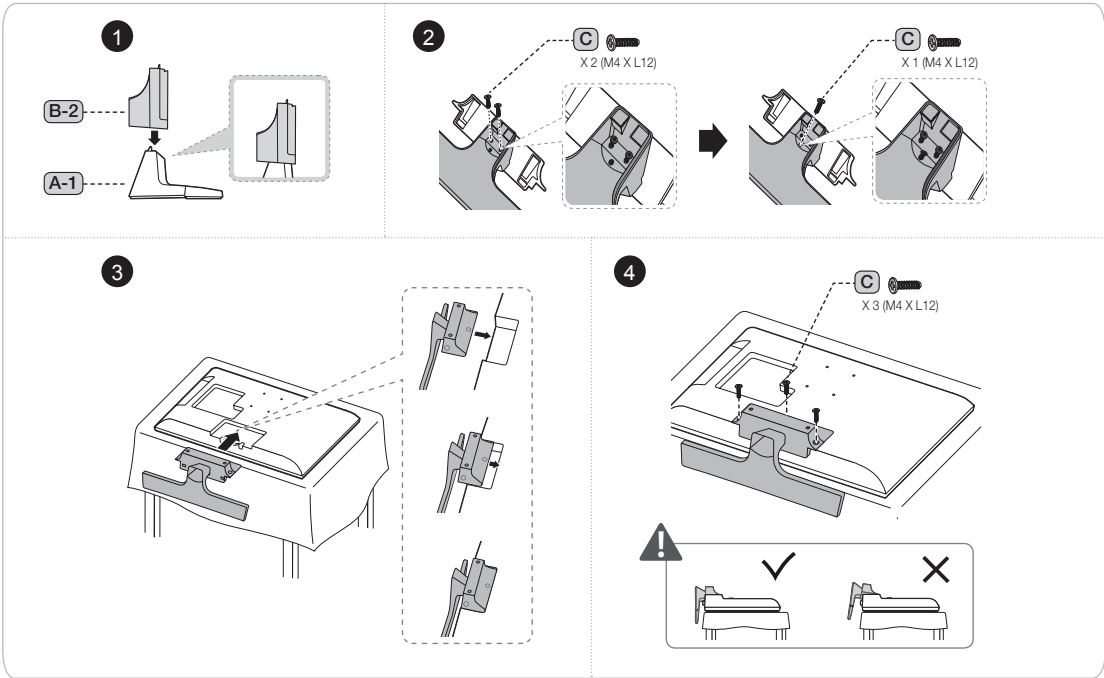
HG28ED450



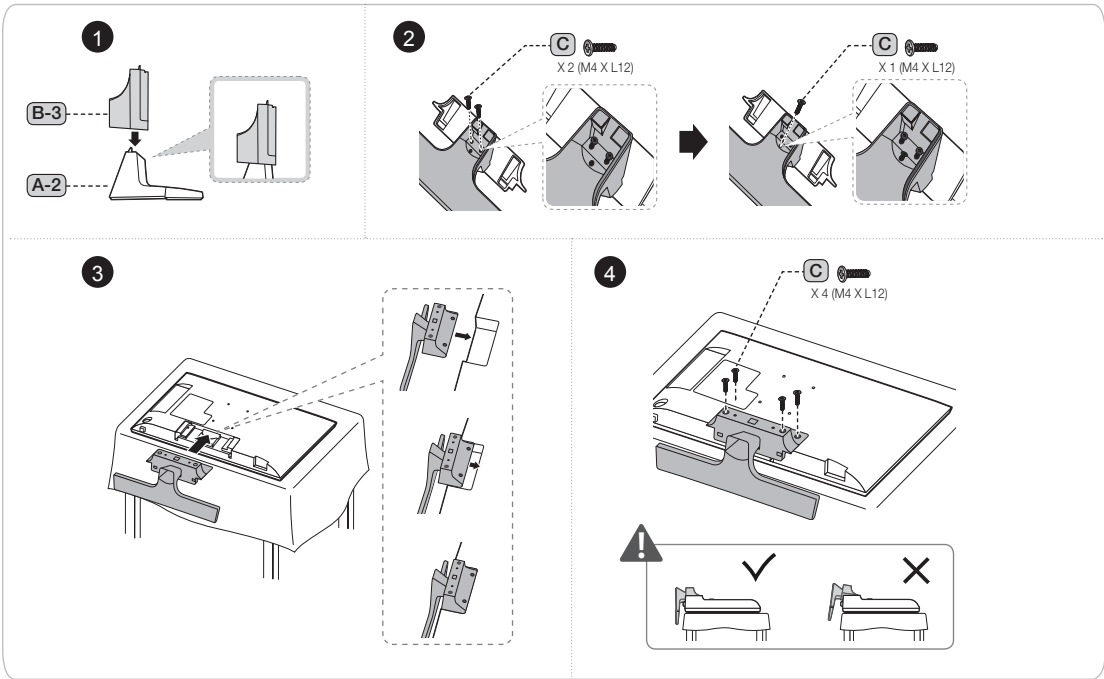
HG40ED450 / HG40AD450



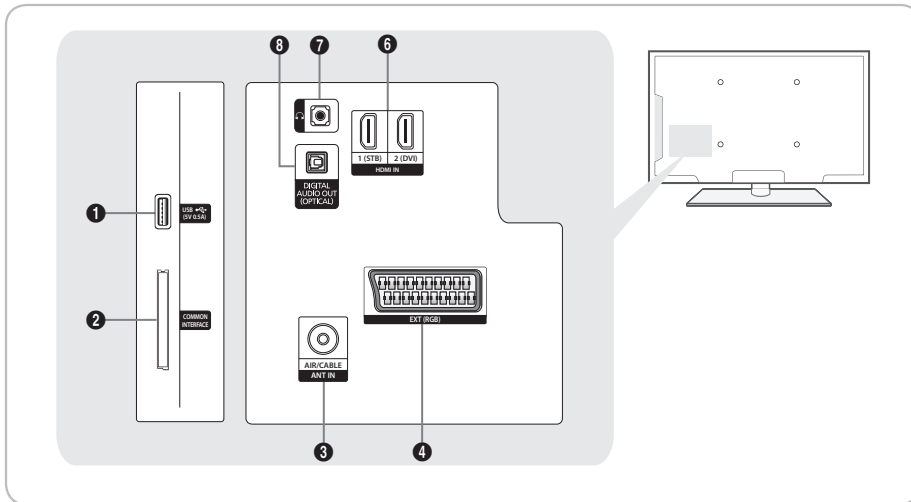
HG24AD450



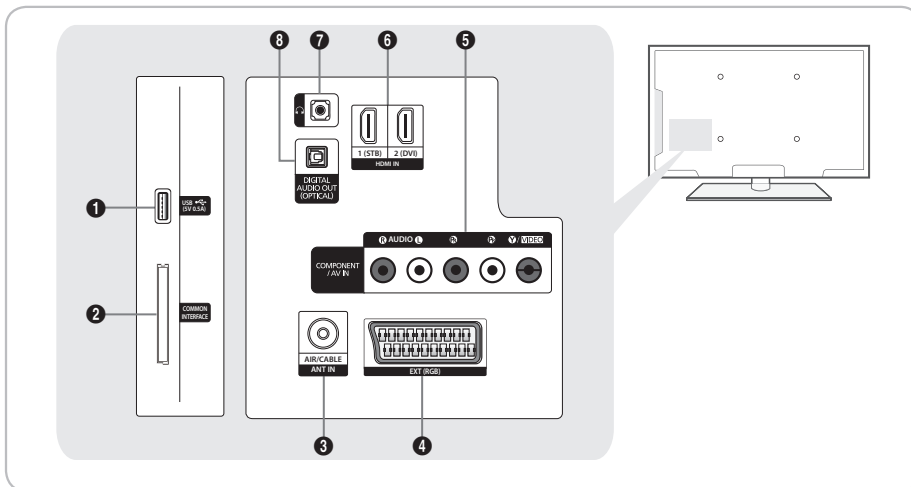
HG28AD450



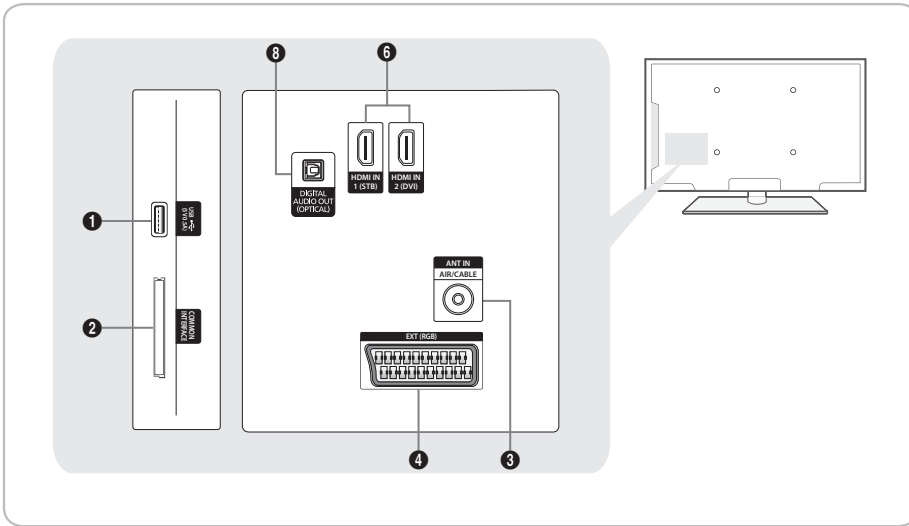
Viewing the Connection Panel



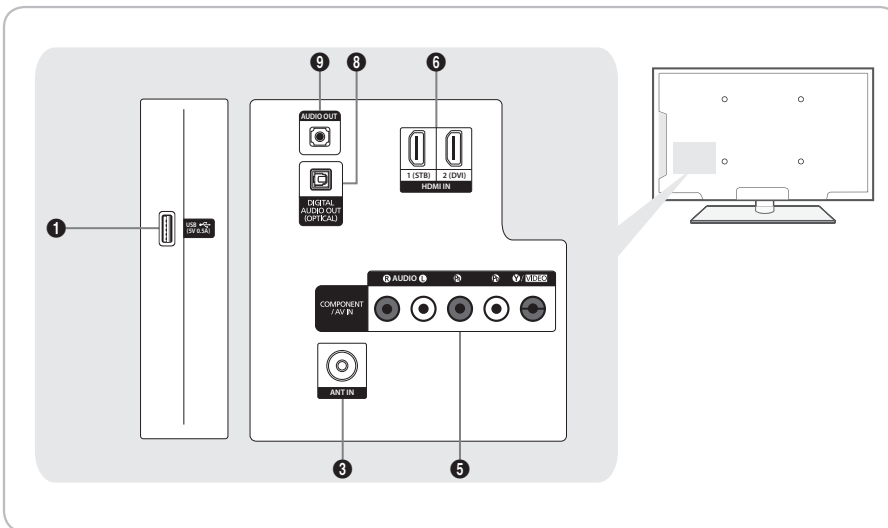
HG24ED450



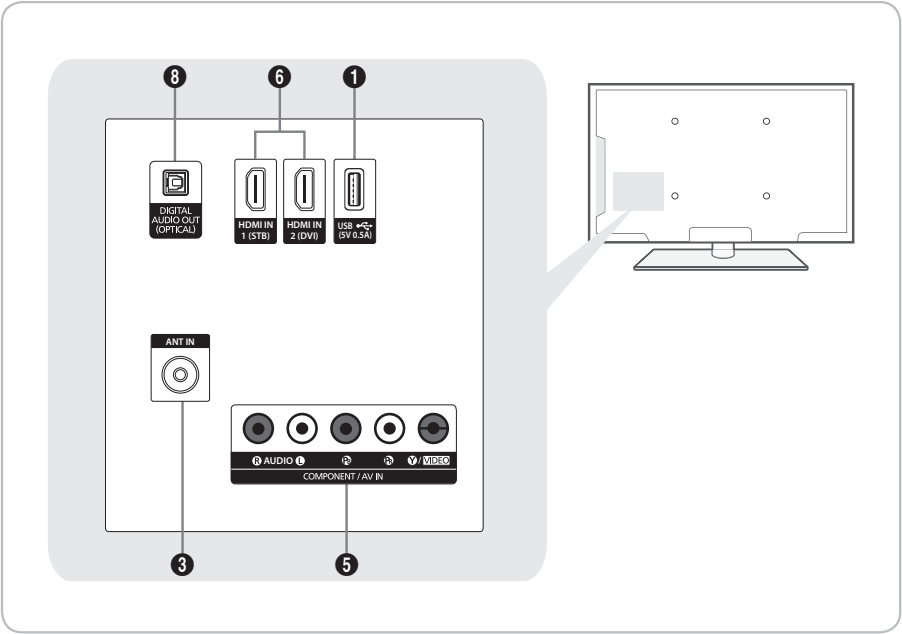
HG28ED450



HG40ED450



HG24AD450
HG28AD450



- ✎ Whenever you connect an external device to your TV, make sure that power on the unit is turned off.
- ✎ When connecting an external device, match the colour of the connection terminal to the cable.

❶ USB (5V 0.5A)

- Connector for software upgrades and Media Play, etc.
- Service connection.

❷ COMMON INTERFACE

❸ ANT IN (AIR/CABLE)

- To view television channels correctly, the TV must receive a signal from one of the following sources:
- An outdoor antenna / A cable television system

❹ EXT (RGB)

- In **Ext.** mode, DTV Out supports MPEG SD Video and Audio only.

❺ COMPONENT / AV IN

- Connects the Component video / audio.
- Connect the component video cables (optional) to the component jacks ("PR", "PB", "Y") at the back of your TV and the other ends to the corresponding component video out jacks on the DVD.
- If you wish to connect both the Set-Top Box and the DVD player, you should connect the Set-Top Box to the DVD Player and connect the DVD Player to the component jacks ("PR", "PB", "Y") on your TV.
- The PR, PB and Y jacks on your component devices (DVD) are sometimes labeled Y, B-Y and R-Y or Y, Cb and Cr.
- Connect the RCA audio cables (optional) to [R - AUDIO - L] at the back of the TV set and the other ends to the corresponding audio out jacks on the DVD Player.

❻ HDMI IN: Connects to the HDMI jack of a device with an HDMI output.

- ✎ No sound connection is needed for an HDMI-HDMI connection. HDMI connections carry both audio and video.
- ✎ Use the HDMI IN (DVI) jack for a DVI connection to an external device. Use a DVI to HDMI cable or DVI-HDMI adapter (DVI to HDMI) for the video connection and the PC/DVI AUDIO IN jacks for audio.

❼ HEADPHONE JACK: Headphones may be connected to the headphone jack on your TV. While the headphones are connected, the sound from the built-in speakers is disabled.

❽ DIGITAL AUDIO OUT (OPTICAL)


❾ AUDIO OUT

Display Modes

You can also select one of the standard resolutions listed in the Resolution column. The TV will automatically adjust to the resolution you choose.

After connecting a computer to the TV, set the screen resolution for the TV on the computer. The optimal resolution is 1920 x 1080 @ 60 Hz. If it is set to any other than in the table below, the TV may display nothing. Set the resolution properly, referring to the user guide of the computer or its graphic card.

The resolutions in the table are recommended.

 Optimal resolution is 1366 X 768 @ 60 Hz.

Mode	Resolution	Horizontal Frequency (KHz)	Vertical Frequency (Hz)	Pixel Clock Frequency (MHz)	Sync Polarity (H / V)
IBM	720 x 400	31.469	70.087	28.322	-/+
MAC	640 x 480	35.000	66.667	30.240	-/-
	832 x 624	49.726	74.551	57.284	-/-
	1152 x 870	68.681	75.062	100,000	-/-
VESA CVT/DMT	640 x 480	31,469	59,940	25,175	-/-
	640 x 480	37,861	72,809	31,500	-/-
	640 x 480	37,500	75,000	31,500	-/-
	800 x 600	37,879	60,317	40,000	+/+
	800 x 600	48,077	72,188	50,000	+/+
	800 x 600	46,875	75,000	49,500	+/+
	1024 x 768	48,363	60,004	65,000	-/-
	1024 x 768	56,476	70,069	75,000	-/-
	1024 x 768	60,023	75,029	78,750	+/+
	1152 x 864	67,500	75,000	108,000	+/+
	1280 x 720	45,000	60,000	74,250	+/+
	1280 x 800	49,702	59,810	83,500	-/+
	1280 x 1024	63,981	60,020	108,000	+/+
	1280 x 1024	79,976	75,025	135,000	+/+
	1366 x 768	47,712	59,790	85,500	+/+

🔧 Optimal resolution is 1920 X 1080 @ 60 Hz.

Mode	Resolution	Horizontal Frequency (KHz)	Vertical Frequency (Hz)	Pixel Clock Frequency (MHz)	Sync Polarity (H / V)
IBM	720 x 400	31.469	70.087	28.322	-/+
MAC	640 x 480	35.000	66.667	30.240	-/-
	832 x 624	49.726	74.551	57.284	-/-
	1152 x 870	68.681	75.062	100.000	-/-
VESA CVT	720 x 576	35,910	59,950	32,750	-/+
	1152 x 864	53,783	59,959	81,750	-/+
	1280 x 720	56,456	74,777	95,750	-/+
	1280 x 960	75,231	74,857	130,000	-/+
VESA DMT	640 x 480	31,469	59,940	25,175	-/-
	640 x 480	37,861	72,809	31,500	-/-
	640 x 480	37,500	75,000	31,500	-/-
	800 x 600	37,879	60,317	40,000	+/+
	800 x 600	48,077	72,188	50,000	+/+
	800 x 600	46,875	75,000	49,500	+/+
	1024 x 768	48,363	60,004	65,000	-/-
	1024 x 768	56,476	70,069	75,000	-/-
	1024 x 768	60,023	75,029	78,750	+/+
	1152 x 864	67,500	75,000	108,000	+/+
	1280 x 1024	63,981	60,020	108,000	+/+
	1280 x 1024	79,976	75,025	135,000	+/+
	1280 x 720	45,000	60,000	74,250	+/+
	1280 x 800	49,702	59,810	83,500	-/+
	1280 x 800	62,795	74,934	106,500	-/+
	1360 x 768	47,712	60,015	85,500	+/+
	1440 x 900	55,935	59,887	106,500	-/+
	1440 x 900	70,635	74,984	136,750	-/+
	1680 x 1050	65,290	59,954	146,250	-/+
VESA GTF	1280 x 720	52,500	70,000	89,040	-/+
	1280 x 1024	74,620	70,000	128,943	-/-
VESA DMT / DTV CEA	1920 x 1080p	67,500	60,000	148,500	+/+

🔧 When using an HDMI/DVI cable connection, you must use the **HDMI IN (DVI)** jack.

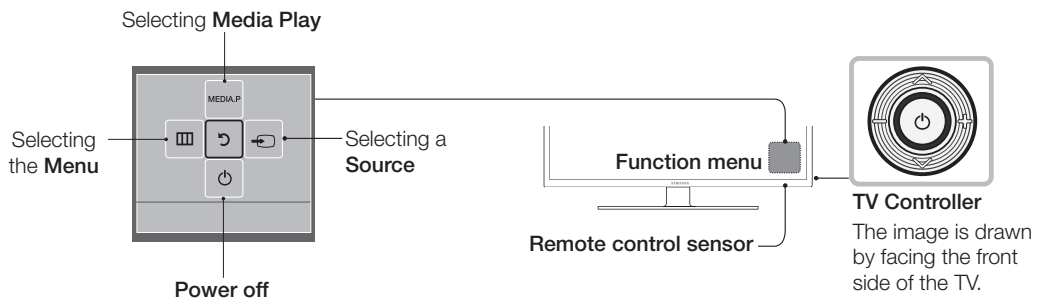
🔧 The interlace mode is not supported.

🔧 The set might operate abnormally if a non-standard video format is selected.

🔧 Separate and Composite modes are supported. SOG is not supported.

Using the TV's Controller

The TV Controller, which is a small joystick like button at the right back of the TV, lets you control the TV without the remote control.



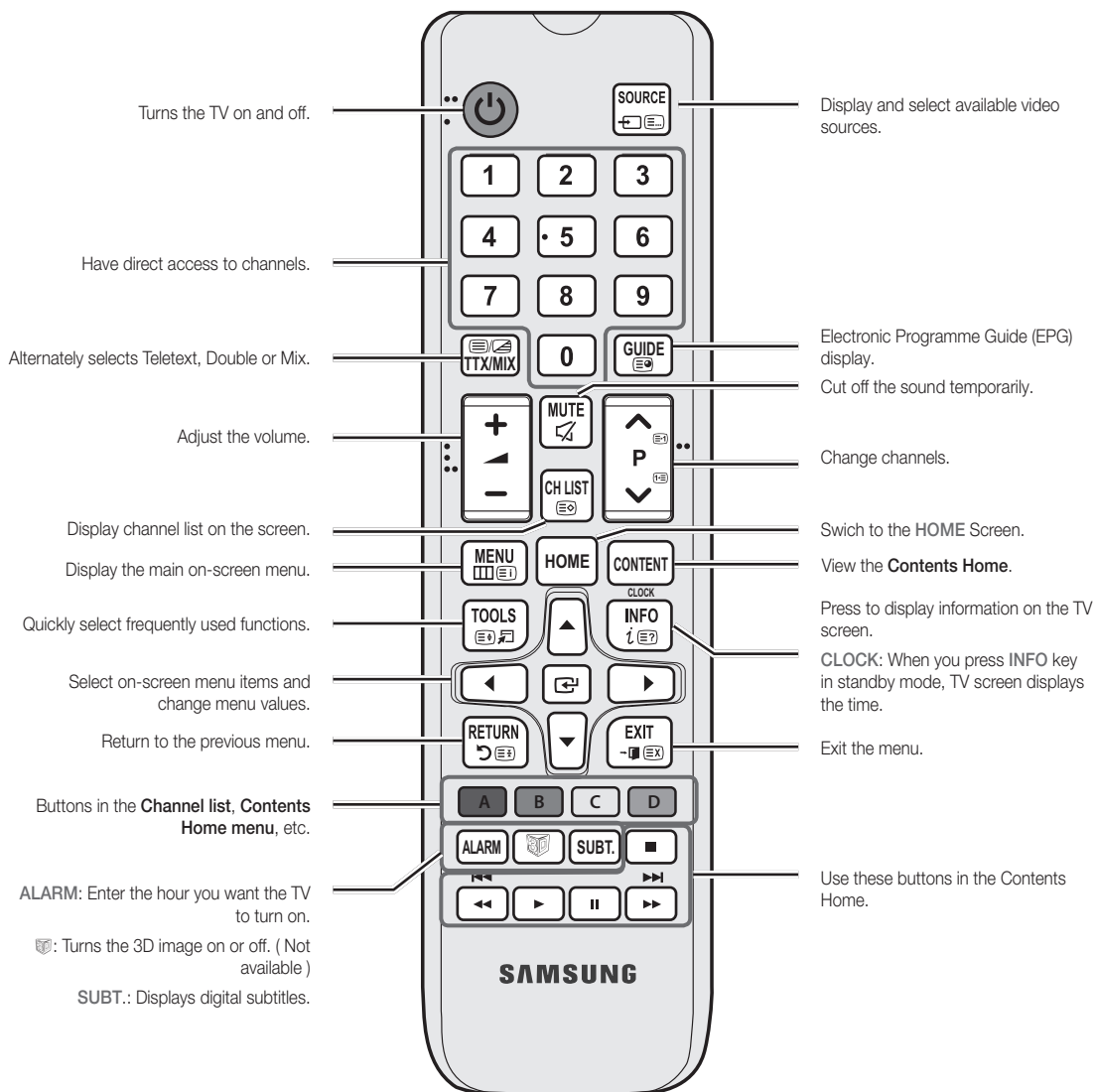
- Some functions which require a PIN code may not be available.
- The product colour and shape may vary depending on the model.
- Exits the menu when pressing the controller for longer than 1 second.
- When selecting the function by moving the controller in the up/down/left/ right directions, be sure not to press the controller. If you press it first, you cannot move it in the up/down/left/right directions.

Standby mode

Your TV enters Standby mode when you turn it off and continues to consume a small amount of electric power. To be safe and to decrease power consumption, do not leave your TV in standby mode for long periods of time (when you are away on vacation, for example). It is best to unplug the power cord.

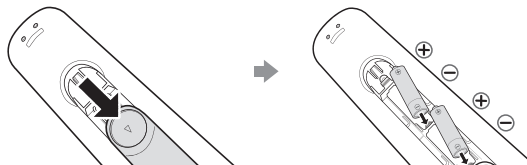
Viewing the Remote Control

This remote control has Braille points on the **Power**, **Channel**, and **Volume** buttons and can be used by visually impaired persons.



Installing batteries (Battery size: AAA)

Rear of the Remote






After you have installed the batteries, use a screwdriver to screw in the screw that holds the battery cover closed.

NOTE





- Use the remote control within 23 feet of the TV.
- Bright light may affect the performance of the remote control. Avoid using nearby special fluorescent light or neon signs.
- The colour and shape may vary depending on the model.
- Remote control button 'ALARM' & '3D' are not supported. When pressing these buttons, the TV unit does not respond.

Using the Football Mode

Football Mode

 MENU  → Applications → Football Mode → ENTER 

This mode provides optimized condition for watching sports games.

-  **(Zoom)**: Pause playback and divide the picture into 9 parts. Select a part to zoom it in. Press this button again to resume.
 -  When the Football Mode is on, the picture and sound modes are set to **Stadium** automatically.
 -  If you turn the TV off while watching **Football Mode**, the **Football Mode** will be disable.
 -  When the **Data Service** is running, the **Zoom** is not available.

Setting the Hotel Option Data

To Enter: Press the MUTE → 1 → 1 → 9 → ENTER buttons in order. (From the Hospitality mode, the Standalone mode is set.)

To Exit from this menu : power off and turn on again.

No	Hotel TV Function			Description
	Category	Item	initial value	
1	Power On	Power On Channel	Last Saved	Set the default values that will be applied when the TV is turned on. <ul style="list-style-type: none"> User Defined : Lets you set Power On Channel and Channel Type manually. See Power On Channel Number and Channel Type below. Last Saved : If you select this item, when the TV is turned on, it displays the channel it was displaying when it was turned off.
		Power On Channel Num	...	When the TV is turned on, it switches automatically to this channel.
		Power On Channel Type	...	<ul style="list-style-type: none"> Select channel band : ATV (analog air band), DTV (digital air band), CATV(analog cable band), CDTV (digital cable band)
		Power On Volume	Last Saved	<ul style="list-style-type: none"> User Defined : Lets you set the Power On Volume manually. See Power On Volume Number below. Last Saved : When the TV is turned on, it returns to the volume that had been set when the power had been turned off.
		Power On Volume Num	...	The TV turns on with this Volume Level.
		Min Volume	0	The minimum Volume Level the user can set in Stand Alone Hospitality mode.
		Max Volume	100	The maximum Volume Level the user can set.
		Power On Source	TV	Select the input source the TV displays when turns on.
		Power On Option	Last Option	Determines the TV's state when power returns after a power failure or after you have unplugged the TV and then plugged it in again. <ul style="list-style-type: none"> Last Option : Returns to its last Power state. If it was in Stand-by, it returns to Stand-by. If it was on, it turns on. Power On : When the power returns, the TV turns on. Standby : When the power returns, the TV enters the Standby mode.
2	Menu OSD	Picture Menu Lock	OFF	Enable or disable the Picture Menu.
		Menu Display	ON	<ul style="list-style-type: none"> On : The Main Menu is displayed. Off : The Main Menu is not displayed.
		Channel Menu Display	OFF	<ul style="list-style-type: none"> On : The Channel Menu is displayed. Off: The Channel Menu is not displayed.
		Panel Button Lock	Unlock	Turning the front panel (local key) operations on/off. <ul style="list-style-type: none"> Unlock : Unlocks all panel keys. Lock : Locks all panel keys. OnlyPower : Locks all panel keys except the Power panel key. Menu/Source : Locks the Menu and Source panel keys.
		Home Menu Display	ON	OFF:The Home Menu is not displayed. ON:The Home Menu is displayed.
		Home Menu Editor		Edit Home Menu.
		Home Menu Auto Start	ON	ON:The Home Menu is Auto Start. OFF:The Home Menu is not Auto Start.

No	Hotel TV Function			Description
	Category	Item	initial value	
3	Music Mode	Music Mode AV	OFF	To get music output from an mp3/audio player through an AV Input Source. When on, you can hear sound from the player through the TV even there is no video signal. The TV's backlight, however, remains on. And add a video signal, it works normally.
		Music Mode PC	...	To get music output from an mp3/audio player through a PC Input Source. When on, you can hear sound from the player through the TV even there is no video signal. The TV's backlight, however, remains on. And add a video signal, it works normally.
		Music Mode Comp	OFF	To get music output from an mp3/audio player through an Component Input Source. When on, you can hear sound from the player through the TV even there is no video signal. The TV's backlight, however, remains on. And add a video signal, it works normally.
		Music Mode Backlight	OFF	Backlight On/Off option in Music mode to save energy
4	External Source	Auto source	OFF	<ul style="list-style-type: none"> On : When an external input source is connected to the TV, the TV identifies the input source, and then automatically switches to that input source. Off : Auto Source function is Off.
5	Eco Solution	Energy saving	Off	Adjusts the brightness of the TV to reduce power consumption. <ul style="list-style-type: none"> Off: Turns off the energy saving function. Low: Sets the TV to low energy saving mode. Medium: Sets the TV to medium energy saving mode. High: Sets the TV to high energy saving mode.
6	Cloning	Clone TV to USB	-	Clone the current TV options to a USB memory device.
		Clone USB to TV	-	Clone the saved TV options on a USB memory device to the TV.
		Setting Auto Initialize	OFF	When Setting Auto Initialize is set to On, and the power is turned off and on or the Master Power is turned off and on, the data is restored to the cloned values. If there is no cloned value, even when the Setting Auto Initialize is set to On, it will be ignored and the operation will be the same as that when Setting Auto Initialize is set to Off.

 HD450 channel search is different from other models. You can search channel in **MENU → Broadcasting**.

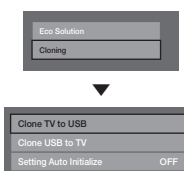
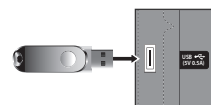
Cloning

USB Cloning is a function to download user configured settings (**Picture, Sound, Input, Channel, Setup, and Hotel Setup**) from one TV set and upload the same settings to other TV sets.

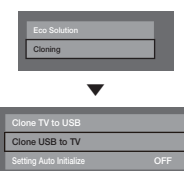
All user-defined settings from the TV (Master Set) can be copied to the USB device.

– USB Cloning support 2.0 Standard only.

- **Cloning from TV to USB:** This is an operation that copies the stored data from a specific area of the TV EEPROM to the USB device.
 1. Insert a USB drive into the USB port on the back of the TV.
 2. Enter the Hotel Options by pressing these buttons in the following order.
MUTE → 1 → 1 → 9 → ENTER
 3. Press the **▲** or **▼** button to select “Clone TV to USB”, then press the **ENTER** button.
 4. The message “Clone TV to USB” is displayed, then press the **ENTER** button.
 5. You can check the status of the USB cloning operation.
 - **In Progress:** While copying data to the USB device.
 - **Completed:** The copy operation was finished successfully.
 - **Failed:** The copy operation was not finished successfully.
 - **No USB:** No USB device connected.



- **Clone USB to TV:** This is an operation that downloads the stored data to the USB device to the TV set.
 1. Insert a USB drive into the USB port at the back of the TV.
 2. Enter the Hotel Options by pressing these buttons in the following order.
MUTE → 1 → 1 → 9 → ENTER
 3. Press the **▲** or **▼** button to select “Clone USB to TV”, then press the **ENTER** button.
 4. The message “Clone USB to TV” is displayed, then press the **ENTER** button.
 5. You can check the status of the USB cloning operation
 - **In Progress:** While copying data to the USB device.
 - **Completed:** The copy operation was finished successfully.
 - **Failed:** The copy operation was not finished successfully.
 - **No USB:** No USB device connected.
 - **No File:** There is no file to copy on the USB device.
- ✎ Activate copying from USB to TV by pressing **ENTER** key for 5 seconds.
- ✎ The **CLONE** function only supports the same model series. (It does not work properly for different model series.)

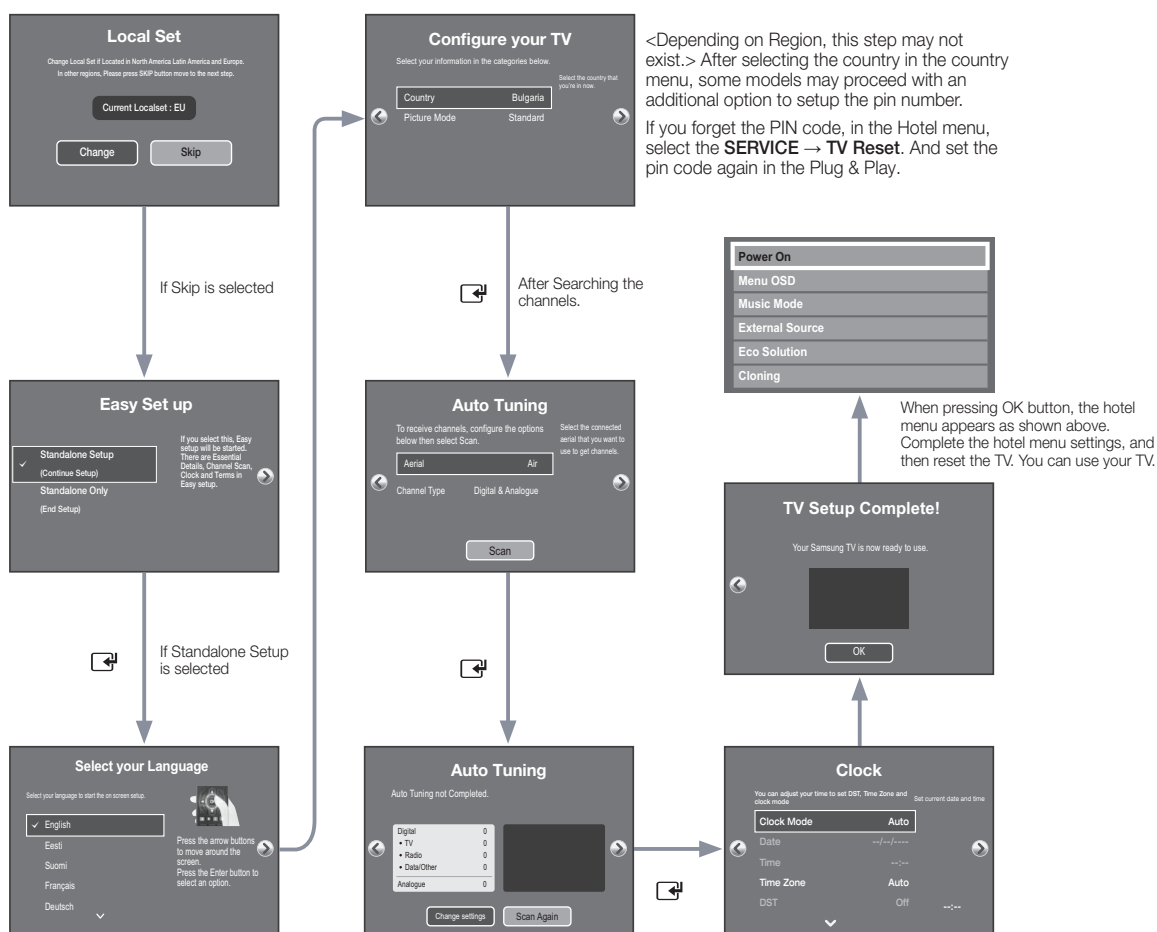


For fast, instant cloning during installation,
insert a USB drive with master settings from the first TV and press the Enter key for 5 seconds.

Plug & Play

The Hotel Plug & Play function automatically performs the Hotel mode selection, Country Setup, Clock Setup and Picture mode Setup when the TV starts for the first time.

- Hotel Plug & Play is only available when the power is turned ON for the first time.
- After setting up the TV first and running Clone TV to USB.
- Next, the TV only needs to exit Hotel Plug & Play, connect to the USB device, then run Clone USB to TV.
- Depending on model and region, some menus may be different.
- TV reset: **INFO - MENU - MUTE - POWER ON**, Option → **factory reset**.



1. LocalSet

- Check the **Current Localset**.
- If you want to change the localset, select the **Change**.
- If you select the **Skip**, the **Start** screen appears.

2. Start - Easy Set Up

- If you select the **Standalone Only**, the Standalone hotel mode is set by default.
- When you select the **Interactive**, Interactive Setup Menu is displayed. Press the power off button to exit from the Interactive menu.
- Select the **Standalone Plug & Play** to go next step.

3. Select the Language

- Select the OSD (On Screen Display) language.
- Display time: The OSD timeouts and operations are the same as all of Samsung's consumer TV models.

4. Select the Country and Picture Mode

- Select the appropriate country and picture mode.
- Depending on model and region, some country may not exist.

5. Auto Tuning

- Select the antenna source and channel type. Configure the settings and select the **Scan**.
- The **Auto Tuning** operation starts searching for channels
- When the **Auto Tuning** operation is completed, the channel information is displayed.

6. Clock

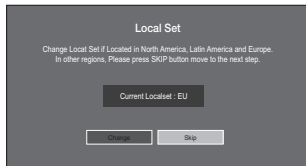
- Set the right time by setting the **DST** (Daylight Savings Time) and **Time Zone**.

7. TV Setup Complete

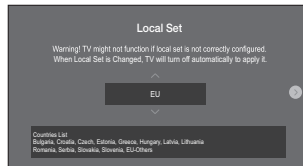
HD Plug & Play – Local Set (Only Europe)

- Local Set is very important software setting value such as Languages, Broadcast frequencies, etc.
- TV might not function, if Local Set is not correctly configured. Select correct Local Set with country list provided.

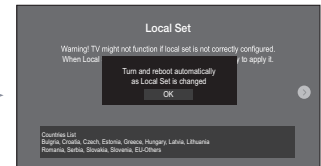
Local Set change option on the first page of HD plug&play



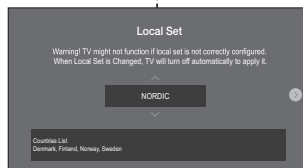
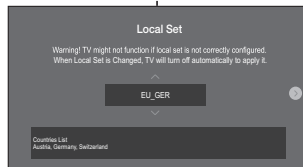
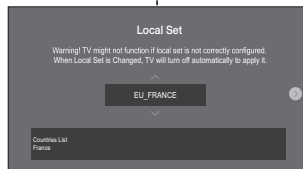
Select right Local Set with country list



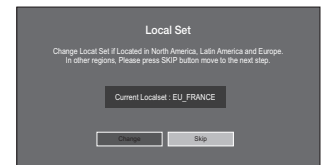
TV will reboot automatically to apply new Local Set



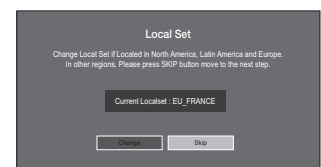
Region	Country	Local Set
Europe	Bulgaria	EU
	Croatia	
	Czech	
	Estonia	
	Greece	
	Hungary	
	Latvia	
	Lithuania	
	Romania	
	Serbia	
	Slovakia	
	Slovenia	
	EU-Others	
	Italy	EU_ITALY
	Austria	EU_GER
	Germany	
	Switzerland	
	France	EU_FRANCE
	Belgium	EU_BEELUX
	Luxembourg	
	Netherlands	EU_SPAIN
	Portugal	
	Spain	EU_UK
	United Kingdom	
	Ireland	NORDIC
	Denmark	
	Finland	
	Norway	
	Sweden	
CIS	Turkey	EU_TURKEY
	Poland	EU_POLAND
	Kazakhstan	CIS_RUSSIA
	Russia	
	Ukraine	



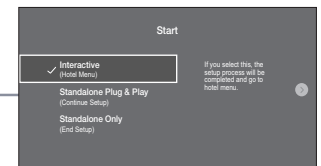
After reboot, updated Local Set is shown



Press Skip, general HD plug&play will be continued



If you need to change Local Set after HD plug&play, click TV Reset function on Factory mode, you can progress HD plug&play including Local Set change.

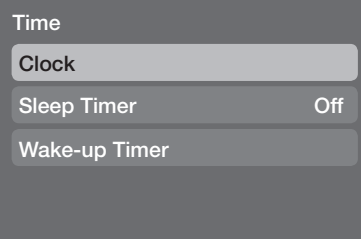


Setting the Time

 MENU → System → Time → Clock → Clock Set

- **The time is entered**
 - Press the remote control button to select **Clock** and set up the time.
- **Setting the Interactive Mode Time**
 - If the Hotel System transmits the time information, the time is set automatically.
 - If the Hotel System does not transmit the time information, the time cannot be displayed.

 If the time is set, the clock will be displayed on the front panel.



Installing the Wall Mount


1. Installing the Wall Mount kit with the GUIDE-STAND supplied by SAMSUNG, please refer to the "Wall Mount Quick setup guide" (Only for HG24/28AD450)

2. Installing other Wall Mount, please refer as follow:

The wall mount kit (sold separately) allows you to mount the TV on the wall. For detailed information on installing the wall mount, see the instructions provided with the wall mount. Contact a technician for assistance when installing the wall mount bracket. We do not advise you to do it yourself.

Samsung Electronics is not responsible for any damage to the product or injury to yourself or others if you select to install the TV on your own.

Wall Mount Kit Specifications (VESA)

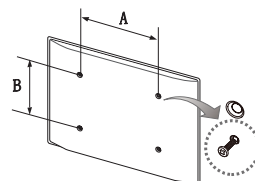
 The Wall mount kit is not supplied but sold separately.

Install your wall mount on a solid wall, perpendicular to the floor. When attaching to other building materials, please contact your nearest dealer. If installing on a ceiling or slanted wall, it may fall and result in severe personal injury.

NOTE

- Standard dimensions for wall mount kits are shown in the table below.
- When purchasing our wall mount kit, a detailed installation manual and all parts necessary for assembly are provided.
- Do not use screws that do not comply with VESA standard screw specifications.
- Do not use screws longer than the standard dimensions, as they may cause damage to the inside of the TV set.
- For wall mounts that do not comply with the VESA standard screw specifications, the length of the screws may differ depending on their specifications.
- Do not fasten the screws too tightly. This may... damage the product or cause the product to fall, leading to personal injury. Samsung is not liable for these kinds of accidents.
- Samsung is not liable for product damage or personal injury when a non-VESA or non-specified wall mount is used or the consumer fails to follow the product installation instructions.
- Do not exceed a 15 degrees tilt when mounting this TV.

inches	VESA Spec. (A * B)	Standard Screw	Quantity
24	75 x 75	M4	4
28	100 x 100		
40	200 X 200	M8	



Do not install your Wall Mount Kit while your TV is turned on. It may result in personal injury due to electric shock.

Securing the TV to the Wall



Caution: Pulling, pushing, or climbing onto the TV may cause the TV to fall. In particular, ensure that your children do not hang over or destabilize the TV; doing so may cause the TV to tip over, resulting in serious injuries or death. Follow all safety precautions provided on the included Safety Flyer. For added stability, install the anti-fall device for safety purposes, as follows.



To avoid the TV from falling

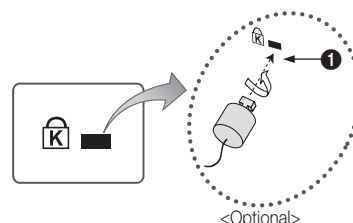
- Put the screws into the clamps and firmly fasten them onto the wall. Confirm that the screws have been firmly installed onto the wall.
 - You may need additional material, such as an anchor, depending on the type of wall.
 - Since the necessary clamps, screws, and string are not supplied, please purchase these additionally.
- Remove the screws from the centre back of the TV, put the screws into the clamps, and then fasten the screws onto the TV again.
 - Screws may not be supplied with the product. In this case, please purchase the screws of the following specifications.
- Connect the clamps fixed onto the TV and the clamps fixed onto the wall with a strong string and then tie the string tightly.
 - NOTE**
 - Install the TV near to the wall so that it does not fall backwards.
 - It is safe to connect the string so that the clamps fixed on the wall are equal to or lower than the clamps fixed on the TV.
 - Untie the string before moving the TV.
- Verify that all connections are properly secured. Periodically check connections for any sign of fatigue for failure. If you have any doubt about the security of your connections, contact a professional installer.

Anti-theft Kensington Lock

The Kensington Lock is not supplied by Samsung. It is a device used to physically fix the system when using it in a public place. The appearance and locking method may differ from the illustration, depending on the manufacturer. Refer to the manual provided with the Kensington Lock for additional information on proper use.

To lock the product, follow these steps:

Please find the “” icon on the rear of the TV. A kensington slot is beside the “” icon.




- Wrap the Kensington lock cable around a large, stationary object such as desk or chair.
- Slide the end of the cable with the lock attached through the looped end of the Kensington lock cable.
- Insert the locking device into the Kensington slot on the product (1).
- Lock the lock.
 - These are general instructions. For exact instructions, see the User manual supplied with the locking device.
 - The locking device has to be purchased separately.
 - The location of the Kensington Lock may be different depending on the model.

Specifications

Items		Specification	Comment
TV System		SECAM DVB-TC	
Audio out	Speaker out	24-28 inch : 5W X 2	
		40inch : 10W X 2	
	Variable Audio	4W mono 8 ohm SPK'	Phone Jack output BTL Sound output
Input	EXT(RGB)	Scart Jack	
	HDMI	Compatible with the HDMI Specifications	
	Antenna	75 ohm Unbalanced, Din Jack , F Jack	
Operating temperature		10°C ~ 40°C (50°F ~ 104°F)	
Operating Humidity		10% ~ 80%	non-condensing
Storage Temperature		-20°C ~ 45°C (-4°F ~ 113°F)	
Storage Humidity		5% ~ 95%	non-condensing

 Design and specifications are subject to change without prior notice.

 For information about the power supply, and more information about the power consumption, refer to the label attached to the product.

 The above specifications may differ depending on the model.

Supported Video Formats

File Extension	Container	Video Codec	Resolution	Frame rate(fps)	Bit rate(Mbps)	Audio Codec
*.avi / *.mkv *.asf / *.wmv *.mp4 / *.3gp *.vro / *.mpg *.mpeg / *.ts *.tp / *.trp *.mov / *.flv *.vob / *.svi *.divx	AVI	DivX 3.11/4.x/5.x/6.x	1920 x 1080	6~30	30	AC3
	MKV	MPEG4 SP/ASP				LPCM
	ASF	H.264 BP/MP/HP				ADPCM
	MP4	Motion JPEG	640 x 480		8	(IMA, MS)
	3GP	Window Media Video v9	1920 x 1080		30	AAC
	MOV	MPEG2				HE-AAC
	FLV	MPEG1				WMA
	VRO					DD+
	VOB					MPEG (MP3)
	PS					DTS (Core)
	TS					G.711(A-Law, μ-Law)
*.webm	WebM	VP8		20	Vorbis	

Other Restrictions

- Video content will not play, or not play correctly, if there is an error in the content or the container.
- Sound or video may not work if the contents have a standard bit rate/frame rate above the compatible Frame/sec listed in the table.
- If the Index Table is in error, the Seek (Jump) function is not supported.
- Some USB/digital camera devices may not be compatible with the player.
- The menu can be displayed late if the video is over 10Mbps(bit rate).

Video decoder	Audio decoder
<ul style="list-style-type: none"> • Supports up to H.264, Level 4.1 (FMO/ASO/RS are not supported.) • frame rate : <ul style="list-style-type: none"> – Below 1280 x 720: 60 frame max – Above 1280 x 720: 30 frame max • VC1 AP L4 is not supported. • GMC is not supported. 	<ul style="list-style-type: none"> • WMA 10 Pro supports up to 5.1 channel and M2 profile. • WMA lossless audio is not supported. • Vorbis supports up to 2ch. • DD+ supports up to 5.1 channel.

Supported Subtitle Formats

External

Name	File extension
MPEG-4 timed text	.txt
SAMI	.smi
SubRip	.srt
SubViewer	.sub
Micro DVD	.sub or .txt
SubStation Alpha	.ssa
Advanced SubStation Alpha	.ass
Powerdivx	.psb

Internal

Name	Container	ormat
Xsub	AVI	Picture Format
SubStation Alpha	MKV	Text Format
Advanced SubStation Alpha	MKV	Text Format
SubRip	MKV	Text Format
MPEG-4 timed text	MP4	Text Format

Supported Photo Formats

File Extension	Type	Resolution
*.jpg *.jpeg	JPEG	15360 X 8640
*.bmp	BMP	4096 X 4096
*.mpo	MPO	15360 X 8640

Supported Music Formats

File Extension	Type	Codec	Remark
*.mp3	MPEG	MPEG1 Audio Layer 3	
*.m4a *.mpa *.aac	MPEG4	AAC	
*.flac	FLAC	FLAC	Can support up to 2channel
*.ogg	OGG	Vorbis	Can support up to 2channel
*.wma	WMA	WMA	WMA 10 Pro supports up to 5.1 channel and M2 profile. (WMA lossless audio is not supported.)
*.wav	wav	wav	
*.mid *.midi	midi	midi	Can not support seeking



Contact SAMSUNG WORLD WIDE

If you have any questions or comments relating to Samsung products, please contact the SAMSUNG customer care centre.

Country	Customer Care Centre ☎	Web Site
AUSTRIA	0800 - SAMSUNG (0800 - 7267864)	www.samsung.com/at/support
BELGIUM	02-201-24-18	www.samsung.com/be/support (Dutch) www.samsung.com/be_fr/support (French)
BOSNIA	051 331 999	www.samsung.com/support
BULGARIA	800 111 31 , Безплатна телефонна линия	www.samsung.com/bg/support
CROATIA	072 726 786	www.samsung.com/hr/support
CZECH	800 - SAMSUNG (800-726786) Samsung Electronics Czech and Slovak, s.r.o. V Parku 2343/24, 148 00 - Praha 4	www.samsung.com/cz/support
DENMARK	70 70 19 70	www.samsung.com/dk/support
FINLAND	030-6227 515	www.samsung.com/fi/support
FRANCE	01 48 63 00 00	www.samsung.com/fr/support
GERMANY	0180 6 SAMSUNG bzw. 0180 6 7267864* (*0,20 €/Anruf aus dem dt. Festnetz, aus dem Mobilfunk max. 0,60 €/Anruf)	www.samsung.com/de/support
CYPRUS	8009 4000 only from landline, toll free	www.samsung.com/gr/support
GREECE	80111-SAMSUNG (80111 726 7864) only from land line (+30) 210 6897691 from mobile and land line	
HUNGARY	0680SAMSUNG (0680-726-786) 0680PREMIUM (0680-773-648)	http://www.samsung.com/hu/support
ITALIA	800-SAMSUNG (726-7864)	www.samsung.com/it/support
LUXEMBURG	261 03 710	www.samsung.com/support
MONTENEGRO	020 405 888	www.samsung.com/support
SLOVENIA	080 697 267 090 726 786	www.samsung.com/si/support
NETHERLANDS	0900-SAMSUNG (0900-7267864) (€ 0,10/Min)	www.samsung.com/nl/support
NORWAY	815 56480	www.samsung.com/no/support
POLAND	0 801-172-678* lub +48 22 607-93-33 * * (koszt połączenia według taryfy operatora)	www.samsung.com/pl/support
PORTUGAL	808 20 7267	www.samsung.com/pt/support
ROMANIA	08008 726 78 64 (08008 SAMSUNG) Apel GRATUIT	www.samsung.com/ro/support
SERBIA	011 321 6899	www.samsung.com/rs/support
SLOVAKIA	0800 - SAMSUNG (0800-726 786)	www.samsung.com/sk/support
SPAIN	0034902172678	www.samsung.com/es/support
SWEDEN	0771 726 7864 (SAMSUNG)	www.samsung.com/se/support
SWITZERLAND	0800 726 78 64 (0800-SAMSUNG)	www.samsung.com/ch/support (German) www.samsung.com/ch_fr/support (French)
UK	0330 SAMSUNG (7267864)	www.samsung.com/uk/support
EIRE	0818 717100	www.samsung.com/ie/support
LITHUANIA	8-800-77777	www.samsung.com/lt/support
LATVIA	8000-7267	www.samsung.com/lv/support
ESTONIA	800-7267	www.samsung.com/ee/support
TURKEY	444 77 11	www.samsung.com/tr/support