



**SAMSUNG**

**HW-H600**

**HW-H610**

User manual

# Wireless Audio - SoundStand

Imagine the possibilities

Thank you for purchasing this Samsung product.

To receive a more complete service, please register your product at

[www.samsung.com/register](http://www.samsung.com/register)

# FEATURES

## **TV SoundConnect**

TV SoundConnect lets you listen to audio from your TV on your SoundStand via a Bluetooth connection and lets you control the sound.

## **HDMI**

HDMI transmits video and audio signals simultaneously, and provides a clearer picture.

The unit is also equipped with the ARC function which lets you listen to sound from your TV through the SoundStand via an HDMI cable. This function is only available if you connect the unit to an ARC compliant TV.

## **Surround Sound Expansion**

The Surround Sound Expansion feature adds depth and spaciousness to your listening experience. Surround Sound Expansion is powered by Sonic Emotion.

## **Special Sound Modes**

You can select different sound modes - CINEMA / SPORTS / VOICE / MUSIC / STANDARD (OFF) - depending on the type of content you want to enjoy.

## **Multi-function Remote Control**

You can use the supplied remote control to control various operations with the simple press of a button.

## **USB Host Support**

You can connect and play music files from external USB storage devices such as MP3 players, USB flash memory, etc. using the SoundStand's USB HOST function.

## **Bluetooth Function**

You can use connect a Bluetooth device to the SoundStand and enjoy music with high quality stereo sound, all without wires!





## **NFC (Only HW-H610 model)**

Connect your NFC compatible device via Bluetooth to the SoundStand using this simple set-up procedure and play music on the device through the SoundStand.

# SAFETY INFORMATION

## SAFETY WARNINGS

TO REDUCE THE RISK OF ELECTRIC SHOCK, DO NOT REMOVE THE COVER (OR BACK).  
NO USER-SERVICEABLE PARTS ARE INSIDE. REFER SERVICING TO QUALIFIED SERVICE PERSONNEL.

	<b>CAUTION</b> RISK OF ELECTRIC SHOCK DO NOT OPEN		 This symbol indicates "dangerous voltage" inside the product that presents a risk of electric shock or personal injury.
		 This symbol indicates important instructions accompanying the product.	

**WARNING :** To reduce the risk of fire or electric shock, do not expose this appliance to rain or moisture.

**CAUTION :** TO PREVENT ELECTRIC SHOCK, MATCH WIDE BLADE OF PLUG TO WIDE SLOT, FULLY INSERT.

- This apparatus shall always be connected to a AC outlet with a protective grounding connection.
- To disconnect the apparatus from the mains, the plug must be pulled out from the mains socket, therefore the mains plug shall be readily operable.

### CAUTION

- Do not expose this apparatus to dripping or splashing. Do not put objects filled with liquids, such as vases on the apparatus.
- To turn this apparatus off completely, you must pull the power plug out of the wall socket. Consequently, the power plug must be easily and readily accessible at all times.

### Wiring the Main Power Supply Plug (UK Only)

#### IMPORTANT NOTICE

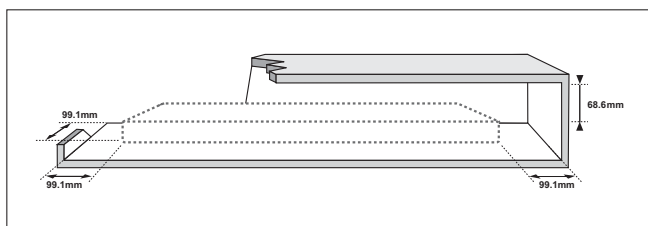
The mains lead on this equipment is supplied with a moulded plug incorporating a fuse. The value of the fuse is indicated on the pin face of the plug and if it requires replacing, a fuse approved to BS1362 of the same rating must be used. Never use the plug with the fuse cover removed. If the cover is detachable and a replacement is required, it must be of the same colour as the fuse fitted in the plug. Replacement covers are available from your dealer. If the fitted plug is not suitable for the power points in your house or the cable is not long enough to reach a power point, you should obtain a suitable safety approved extension lead or consult your dealer for assistance. However, if there is no alternative to cutting off the plug, remove the fuse and then safely dispose of the plug. Do not connect the plug to a mains socket as there is a risk of shock hazard from the bared flexible cord. Never attempt to insert bare wires directly into a mains socket. A plug and fuse must be used at all times.

#### IMPORTANT

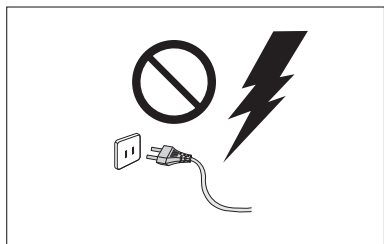
The wires in the mains lead are coloured in accordance with the following code:- BLUE = NEUTRAL BROWN = LIVE As these colours may not correspond to the coloured markings identifying the terminals in your plug, proceed as follows:- The wire coloured BLUE must be connected to the terminal marked with the letter N or coloured BLUE or BLACK. The wire coloured BROWN must be connected to the terminal marked with the letter L or coloured BROWN or RED.

**WARNING : DO NOT CONNECT EITHER WIRE TO THE EARTH TERMINAL WHICH IS MARKED WITH THE LETTER E OR BY THE EARTH SYMBOL , OR COLOURED GREEN OR GREEN AND YELLOW.**

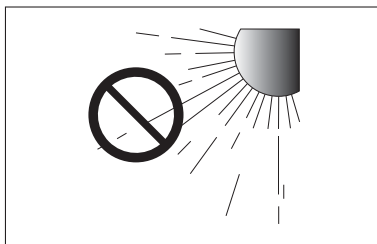
## PRECAUTIONS



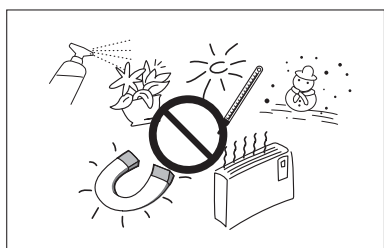
Ensure that the AC power supply in your house complies with the power requirements listed on the identification sticker located on the back of your product. Install your product horizontally, on a suitable base (furniture), with enough space around it for ventilation 7~10 cm. Make sure the ventilation slots are not covered. Do not place the unit on amplifiers or other equipment which may become hot. This unit is designed for continuous use. To fully turn off the unit, disconnect the AC plug from the wall outlet. Unplug the unit if you intend to leave it unused for a long period of time.



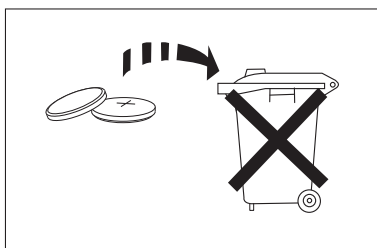
During thunderstorms, disconnect the AC plug from the wall outlet. Voltage peaks due to lightning could damage the unit.



Do not expose the unit to direct sunlight or other heat sources. This could lead to overheating and cause the unit to malfunction.



Protect the product from moisture (i.e. vases), and excess heat (e.g. a fireplace) or equipment creating strong magnetic or electric fields. Disconnect the power cable from the AC supply if the unit malfunctions. Your product is not intended for industrial use. It is for personal use only. Condensation may occur if your product has been stored in cold temperatures. If transporting the unit during the winter, wait approximately 2 hours until the unit has reached room temperature before using.



The batteries used with this product contain chemicals that are harmful to the environment. Do not dispose of batteries in the general household trash. Do not dispose of batteries in a fire. Do not short circuit, disassemble, or overheat the batteries. Danger of explosion if battery is incorrectly replaced. Replace only with the same or equivalent type.

# CONTENTS

## 2 FEATURES

## 3 SAFETY INFORMATION

- 3 Safety warnings
- 4 Precautions

## 6 GETTING STARTED

- 6 Before reading the user's manual
- 6 What's included

## 7 DESCRIPTIONS

- 7 Top/front panel
- 8 Rear panel

## 9 REMOTE CONTROL

- 9 Remote control buttons and functions

## 11 INSTALLATION

- 11 SoundStand installation

## 12 CONNECTIONS

- 12 Connecting an external device using an HDMI cable
- 13 Connecting an external device using OPTICAL (DIGITAL) cable or AUDIO (ANALOGUE) cable

## 14 FUNCTIONS

- 14 Input mode
- 14 ARC (HDMI OUT)
- 15 Bluetooth
- 17 NFC (Only HW-H610 model)
- 18 TV SoundConnect
- 19 USB
- 20 Software upgrade

## 21 TROUBLESHOOTING

## 22 APPENDIX

- 22 Specifications
- 22 License



- Figures and illustrations in this User Manual are provided for reference only and may differ from actual product appearance.
- An administration fee may be charged if either
  - (a) an engineer is called out at your request and there is no defect with the product (i.e. where the user manual has not been read).
  - (b) you bring the unit to a repair centre and there is no defect with the product (i.e. where the user manual has not been read).
- You will be informed of the administration fee amount before a technician visits.

# GETTING STARTED

## BEFORE READING THE USER'S MANUAL

Note the following terms before reading the user manual.

### ► Icons used in this manual

Icon	Term	Definition
	<b>Caution</b>	Indicates a situation where a function does not operate or settings may be canceled.
	<b>Note</b>	Indicates tips or instructions on the page that help you operate a function.

### ► Safety Instructions and Troubleshooting

- 1) Be sure to familiarise yourself with the Safety Instructions before using this product. (See page 3)
- 2) If a problem occurs, check Troubleshooting. (See page 21)

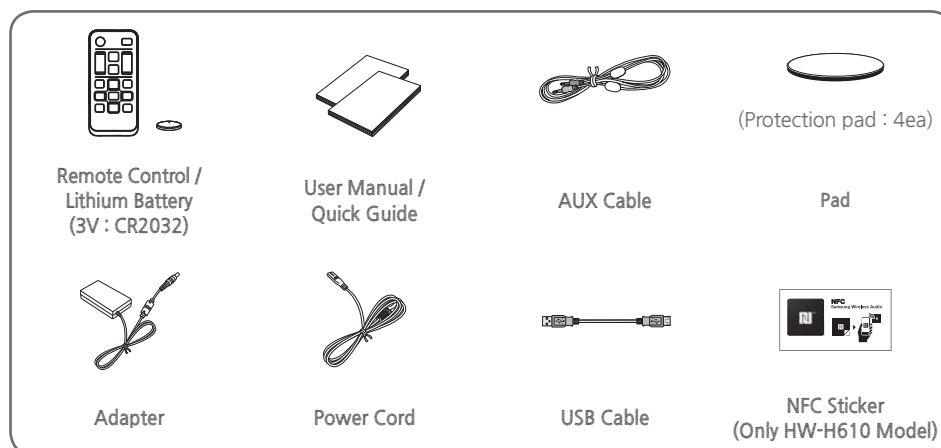
### ► Copyright

©2014 Samsung Electronics Co.,Ltd.

All rights reserved; no part of this user's manual may be reproduced or copied without the prior written permission of Samsung Electronics Co.,Ltd.

## WHAT'S INCLUDED

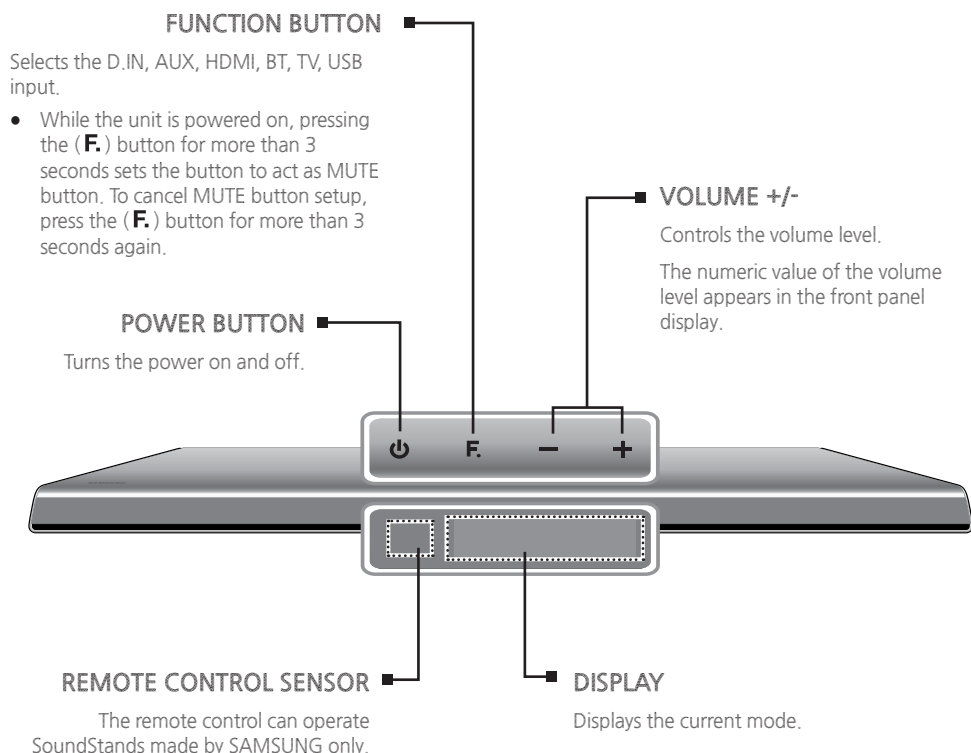
Check for the supplied accessories shown below.



- The appearance of the accessories may differ slightly from the illustrations above.
- Use the dedicated USB cable to connect external USB devices to the unit.

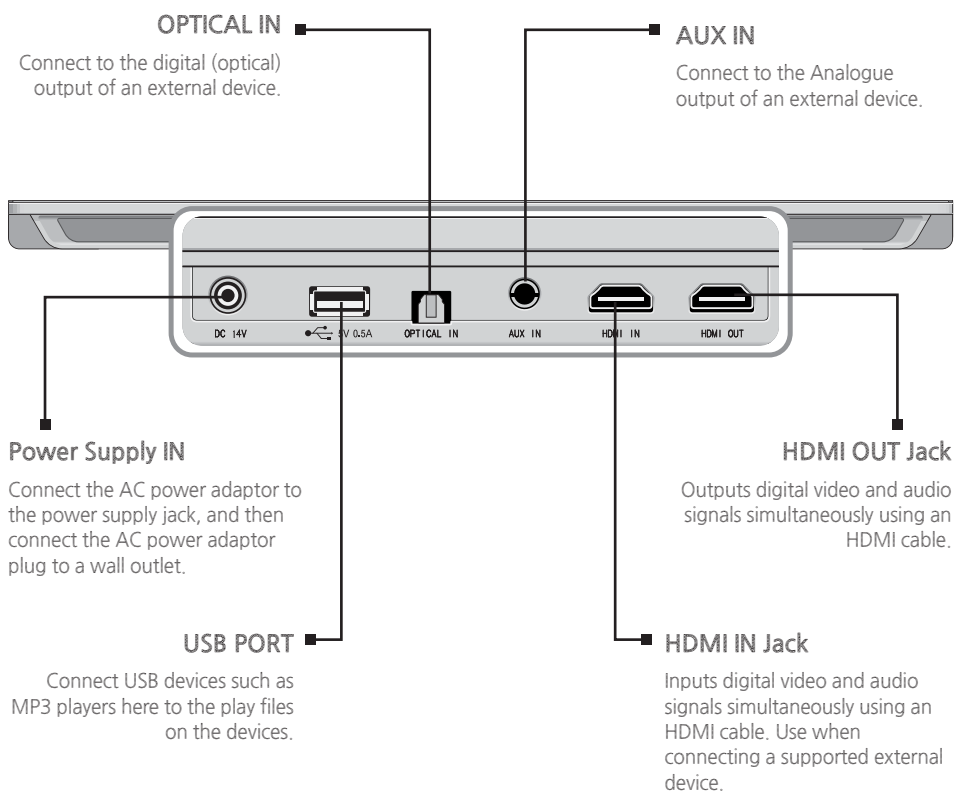
# DESCRIPTIONS

## TOP/FRONT PANEL



- When you turn on this unit, there will be a 4 to 5 second delay before it produces sound.
- If you want to enjoy the sound only from the SoundStand, you must turn off the TV's speakers in the Audio Setup menu of your TV. Refer to the owner's manual supplied with your TV.

## REAR PANEL

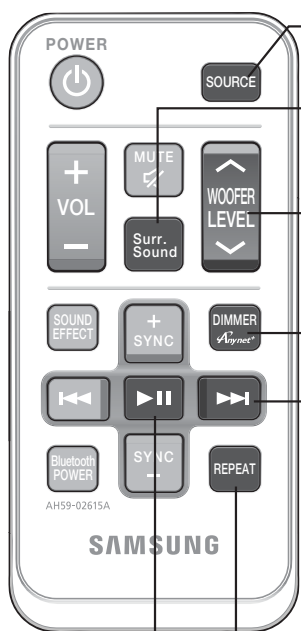


- When disconnecting the power cable of the AC power adaptor from the wall outlet, pull the plug. Do not pull the cable.
- Do not connect this unit or other components to an AC outlet until all connections between components are complete.



# REMOTE CONTROL

## REMOTE CONTROL BUTTONS AND FUNCTIONS



### SOURCE

Press to select a source connected to the SoundStand.

### Surr.Sound (Surround Sound Expansion)

Surr.Sound adds depth and spaciousness to the sound. Pressing the **Surr.Sound** button repeatedly cycles through the Surr.Sound settings: **AUTO**, **ON**, **OFF**.

**SURROUND SOUND AUTO** : If the sound source is more than 2 channels then SURROUND SOUND ON turns on automatically. On the other hand, if the sound source is less than 2 channels (STEREO), then mode is automatically set to SURROUND SOUND OFF.

### WOOFER LEVEL

You can control the woofer volume.

Press **▲** or **▼** button on the **WOOFER LEVEL** button to increase or decrease the woofer volume. You can set it from SW -6 to SW +6.

### DIMMER/ANYNET+

**DIMMER** : Press the **DIMMER/ANYNET+** button on the remote to control the brightness of the display.

**ANYNET+** : Turns on the ANYNET+ function which lets the remote from your Anynet+ Samsung TV control the SoundStand. The ANYNET+ function toggles on and off each time the **DIMMER/ANYNET+** button is pressed and held for more than 5 seconds.

### Skip Forward

If there is more than one file on the device you are playing, and you press the **▶▶** button, the next file is selected.

### REPEAT

You can set the REPEAT function during music playback from a USB device.

- **REPEAT OFF** : Cancels Repeat Playback.
- **REPEAT FILE** : Repeatedly play a track.
- **REPEAT ALL** : Repeatedly play all tracks.
- **REPEAT RANDOM** : Plays tracks in random order. (A track that has already been played may be played again.)

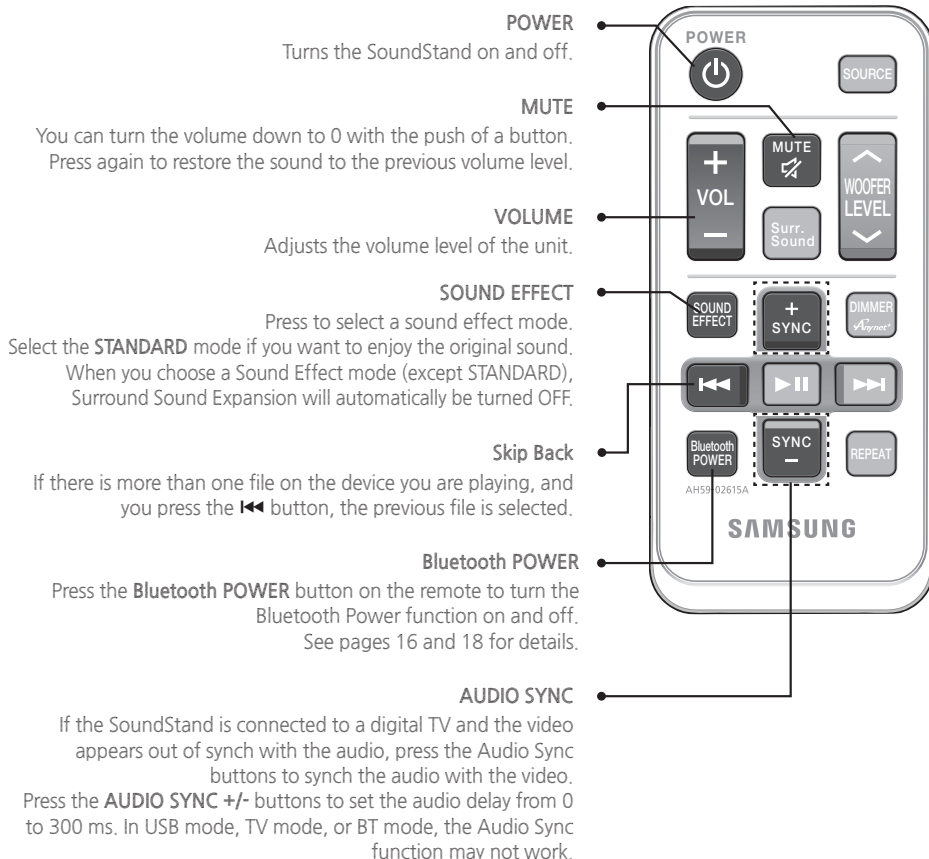
### Play/Pause

Press the **▶||** button to pause playing the file temporarily. Press the **▶||** button again to play the selected file.

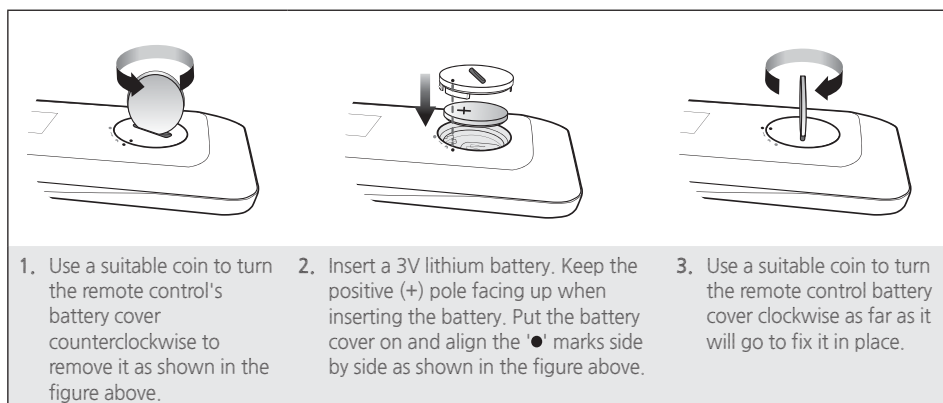


- SoundStand is a Samsung proprietary name.
- Operate the TV using the TV's remote control.

## REMOTE CONTROL



## ► Installing the Batteries in the Remote Control







# INSTALLATION

## SOUNDSTAND INSTALLATION

If you want to place your TV on top of the SoundStand, please make sure that your TV satisfies the two conditions below:

- Maximum TV weight : **35kg**
- Maximum TV stand dimension : **Smaller than 720mm X 320mm**
- ※ Fits most TVs up to 1524mm and up to 35kg (\*TV screen size and stand type may vary)

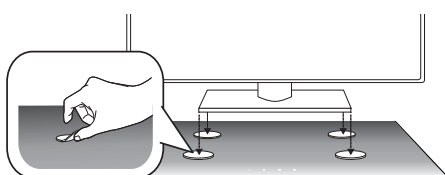
### ► How to install the SoundStand

 <p>Correct installation</p>	 <p>Do not place the TV to one side on the SoundStand</p>
 <p>Do not place the SoundStand near the edge of a TV shelf, table, or entertainment center.</p>	 <p>Do not place a TV whose base is bigger than the SoundStand's top surface on the SoundStand.</p>



- Do not place the TV to one side on the SoundStand. The TV may tip over and may cause physical injury.
- Make sure to place the SoundStand in the center of the shelf, table, etc., when you install it. Do not place it near an edge.
- If the TV is bigger than the SoundStand, consider a wall-mounted TV installation or place the SoundStand on a stable surface.
- Keep the SoundStand at least 5 cm away from the wall when you install it.

### ► Using the protection pads

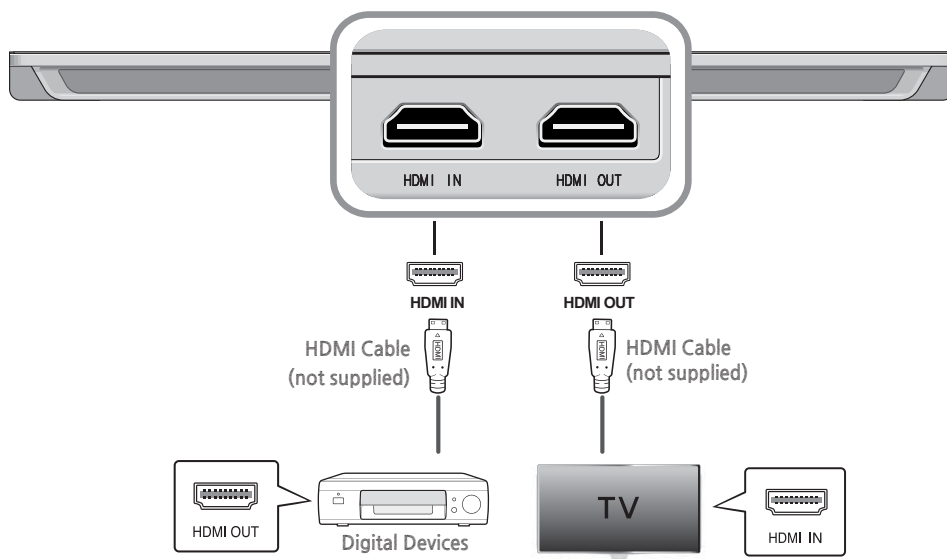
	<p>Place the included protective pads on top of the product and then place the TV stand on top of them to prevent scratches on the product's surface.</p>
---	---

# CONNECTIONS

## CONNECTING AN EXTERNAL DEVICE USING AN HDMI CABLE

HDMI is the standard digital interface for connecting to such devices as a TVs, projectors, DVD players, Blu-ray players, set top boxes, and more.

HDMI prevents any degradation to the signal due to conversion to analogue and maintains the video and audio quality of the original digital source.



### HDMI IN

Connect an HDMI cable (not supplied) from the **HDMI IN** jack on the back of the product to the **HDMI OUT** jack on your digital device.

and,

### HDMI OUT (HDMI)

Connect an HDMI cable (not supplied) from the **HDMI OUT** jack on the back of the product to the **HDMI IN** jack on your TV.



- HDMI is an interface that enables the digital transmission of video and audio data with just a single connector.

### HDMI OUT (ARC)

The ARC function allows digital audio to output via the **HDMI OUT(ARC)** port.

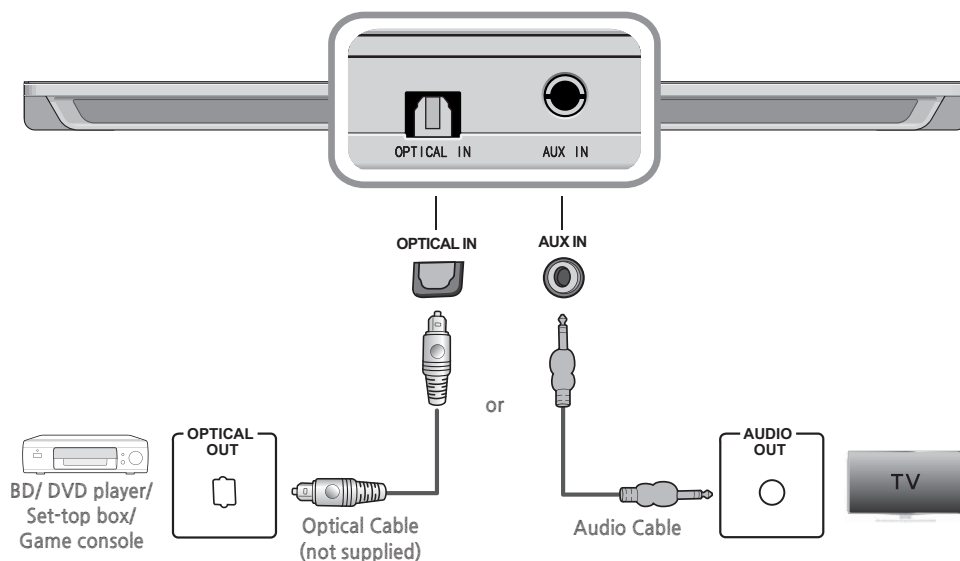
It can be enabled only when the SoundStand is connected to a TV that supports the ARC function



- ANYNET+ must be turned on.
- This function is not available if the HDMI cable does not support ARC.

## CONNECTING AN EXTERNAL DEVICE USING OPTICAL (DIGITAL) CABLE OR AUDIO (ANALOGUE) CABLE

This unit comes equipped with one optical in digital jack and one audio analogue in jack, giving you two ways to connect it to a TV.



### OPTICAL IN

Connect **OPTICAL IN** on the main unit to the OPTICAL OUT of the TV or Source Device.



- Do not connect the power cord of this product or your TV to the wall outlet until all connections between components are complete.
- Before moving or installing this product, be sure to turn off the power and disconnect the power cord

### AUX IN

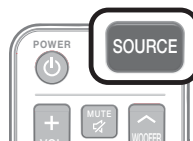
Connect **AUX IN** (Audio) on the main unit to the AUDIO OUT of the TV or Source Device. Be sure to match connector colours.

or,

# FUNCTIONS

## INPUT MODE

Press the **SOURCE** button on the remote control or the **(F.)** button on the product's top panel to select the mode you want.



Input mode	Display
Optical Digital input	<b>D.IN</b>
AUX input	<b>AUX</b>
HDMI input	<b>HDMI</b>
BLUETOOTH mode	<b>BT</b>
TV mode	<b>TV</b>
USB mode	<b>USB</b>

The unit turns off automatically in the following situations.

- D.IN/HDMI/BT/TV/USB/ARC Mode
  - If there is no audio signal for 25 minutes.
- AUX Mode
  - If the AUX cable is disconnected for 25 minutes.
  - If there is no KEY input for 8 hours when the AUX cable is connected. To turn this function ON or OFF, press and hold the ►|| button for 5 seconds. AUTO POWER DOWN ON / OFF appears on the display.

## ARC (HDMI OUT)



HDMI Cable



- The ARC function allows digital audio to output via the HDMI OUT (ARC) port. It can be enabled only when the SoundStand is connected to a TV that supports the ARC function.
- ANYNET+ must be turned on.



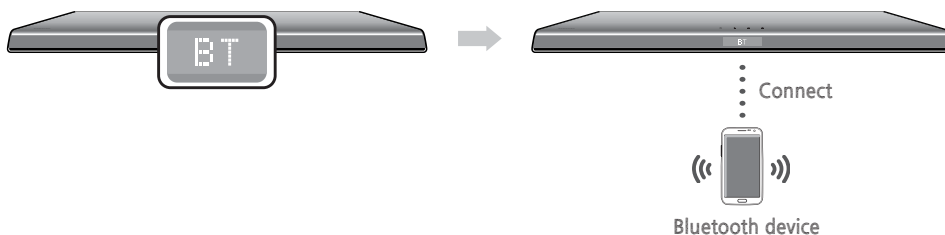
- This function is not available if the HDMI cable does not support ARC.
- The ARC function is activated in D.IN mode if you have connected the unit to a TV that supports ARC.
- To turn off the ARC function, turn ANYNET+ off.

## BLUETOOTH

You can use a Bluetooth device to enjoy music with high quality stereo sound, all without wires!

### ► To connect the SoundStand to a Bluetooth device

Check if the Bluetooth device supports the Bluetooth compliant stereo headset function.



1. Press the **SOURCE** button on the remote control or the **(F)** button on the product's top panel to display the **BT** message.
  2. Select the Bluetooth menu on the Bluetooth device you want to connect. (Refer to the Bluetooth device's user manual.)
  3. Select the Stereo headset menu on the Bluetooth device.
    - You will see a list of scanned devices.
  4. Select "[Samsung] SoundStand" from the list.
    - When the SoundStand is connected to the Bluetooth device, it will display [Bluetooth device name] → **BT** on the front display.
    - The device name can only be displayed in English. An underline " \_ " will be displayed if the name is not in English.
    - If the Bluetooth device has failed to pair with the SoundStand, delete the previous "[Samsung] SoundStand" found by the Bluetooth device and have it search for the SoundStand again.
  5. Play music on the connected device.
    - You can listen to the music playing on the connected Bluetooth device over the SoundStand.
    - In BT mode, the Play/Pause/Next/Prev functions are not available. However, these functions are available in Bluetooth devices supporting AVRCP.
- 
- If asked for PIN code when connecting a Bluetooth device, enter <0000>.
  - Only one Bluetooth device can be paired at a time.
  - Bluetooth connection will be terminated when you turn the SoundStand off.
  - The SoundStand may not perform Bluetooth search or connection correctly under the following circumstances:
    - If there is a strong electrical field around the SoundStand.
    - If several Bluetooth devices are simultaneously paired with SoundStand.
    - If the Bluetooth device is turned off, not in place, or malfunctions.
    - Note that such devices as microwave ovens, wireless LAN adaptors, fluorescent lights, and gas stoves use the same frequency range as the Bluetooth device, which can cause electric interference.
  - The SoundStand supports SBC data (44.1kHz, 48kHz).
  - Connect only to a Bluetooth device that supports the A2DP (AV) function.
  - You cannot connect the SoundStand to a Bluetooth device that supports only the HF (Hands Free) function.
-

## ► Bluetooth POWER on (Bluetooth POWER)

When the Bluetooth Power On function is on and the SoundStand is turned off, if a previously paired Bluetooth device tries to pair with the SoundStand, the SoundStand turns on automatically.

1. Press the **Bluetooth POWER** button on the remote control.
2. Bluetooth POWER on appears on the SoundStand's display.



- Available only if the SoundStand is listed among the Bluetooth device's paired devices. (The Bluetooth device and the SoundStand must have been previously paired at least once.)
- SoundStand will appear in the Bluetooth device's searched devices list only when the SoundStand is displaying [BT READY].
- In the TV SoundConnect mode, the SoundStand cannot be paired to another Bluetooth device.
- If the SoundStand is connected to a TV through TV SoundConnect, and you turn the the SoundStand off by turning off the TV, the Bluetooth Power function will not turn the SoundStand on.

## ► To disconnect the Bluetooth device from the SoundStand

You can disconnect the Bluetooth device from the SoundStand. For instructions, see the Bluetooth device's user manual.

- The SoundStand will be disconnected.
- When the SoundStand is disconnected from the Bluetooth device, the SoundStand will display **BT DISCONNECTED** on the front display.

## ► To disconnect the SoundStand from the Bluetooth device

Press the **SOURCE** button on the remote control or the (**F.**) button on the product's top panel to switch from **BT** to another mode or turn off the SoundStand.

- The connected Bluetooth device will wait a certain amount of time for a response from the SoundStand before terminating the connection. (Disconnection time may differ, depending on the Bluetooth device)



- In Bluetooth connection mode, the Bluetooth connection will be lost if the distance between the SoundStand and the Bluetooth device exceeds 5m.
- The SoundStand automatically turns off after 25 minutes in the Ready state.

## More About Bluetooth

Bluetooth is a technology that enables Bluetooth-compliant devices to interconnect easily with each other using a short wireless connection.

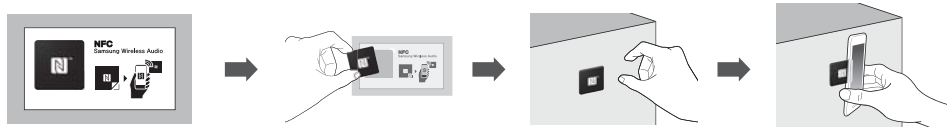
- A Bluetooth device may cause noise or malfunction, depending on usage, when:
  - A part of your body is in contact with the receiving/transmitting system of the Bluetooth device or the SoundStand.
  - It is subject to electrical variation from obstructions caused by a wall, corner, or office partition.
  - It is exposed to electrical interference from same frequency-band devices including medical equipment, microwave ovens, and wireless LANs.
- Pair the SoundStand with the Bluetooth device while they are close together.
- The further the distance between the SoundStand and Bluetooth device, the worse the quality is.  
If the distance exceeds the Bluetooth operational range, the connection is lost.
- In poor reception-sensitivity areas, the Bluetooth connection may not work properly.
- The Bluetooth connection only works when it is close to the unit. The connection will be automatically cut off if the Bluetooth device is out of range. Even within range, the sound quality may be degraded by obstacles such as walls or doors.
- This wireless device may cause electric interference during its operation.



## NFC (ONLY HW-H610 MODEL)

You can connect your SoundStand to an NFC-enabled smart device through a Bluetooth connection with a simple setup. Once connected, you can enjoy music stored in your smart device through the SoundStand.

### ► Connecting with NFC and smart devices



1. Detach the NFC sticker label from the package and attach it to a desired spot.
    - Putting the NFC sticker within a 3m radius from the unit is recommended.
    - Do not attach the NFC sticker on a metallic surface including the SoundStand. Metallic object may interfere with communication and the NFC sticker may not work properly.
  2. Press the (**F.**) button on the main unit's top panel or the **SOURCE** button on the remote control to select the **BT** mode.
  3. Enable the NFC function of your smart device.
  4. Bring your smart device's NFC antenna close to the NFC label.
  5. When the connection prompt appears on your smart device's display, select **<Yes>**.
    - Once the connection is established, the completion message appears.
- ✕ To reconnect once the initial connection had been successful, start from step 3.

### ► Disconnecting NFC

Bring your smart device's NFC antenna close to the NFC label on the SoundStand again. The disconnection message appears on the smart device's display.

### ► To connect another smart device to the SoundStand which is already connected to another NFC compatible device

Bring the new smart device close to the NFC label of the SoundStand.

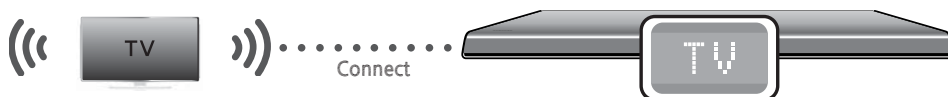


- The NFC function is implemented in Android v4.1.2 Jelly Bean and later operating systems.
  - To make NFC connections, your smart device needs both Android OS 4.1.2 Jelly Bean or later and the NFC tag for NFC function execution. You also need to download the "Samsung NFC Connection" application from the Google Playstore and install it on your smart device. For further details, please refer to the smart device's user manual.
- The location of the NFC antenna is different in different devices. Confirm the location of your smart device's antenna in the device's user manual before attempting to pair it with the SoundStand.
- If your smart device is in a thick housing or case, the NFC connection may not be stable.
- The N-mark is a trade mark or registered trade mark of the NFC Forum Inc. in the United States and other countries.
- If you have trouble with an NFC connection
  - Actually touching your smart device to the NFC label can cause NFC connection failure.
  - If the "Empty tag" error is displayed on the smart device, please try again.
  - Check whether your smart device's antenna is close enough to the NFC logo.
- If you turn off the SoundStand when the Bluetooth Power On feature is ON, and then try to connect a Bluetooth device that has been previously connected using NFC, the SoundStand will turn on automatically when the device connects. To set the Bluetooth Power On option, see page 16.

## TV SOUNDCONNECT

You can enjoy TV sound through your SoundStand connected to a Samsung TV that supports the TV SoundConnect function.

### ► Connecting a TV to the SoundStand



1. Turn on the TV and SoundStand.
  - Set the "Add New Device" menu of the TV to "On".
2. Press the **(F.)** button on the main unit's top panel or the **SOURCE** button on the remote control to select the **TV** mode.
3. On the TV, a message asking whether to enable the TV SoundConnect function. "[Samsung] SoundStand" is displayed on the TV screen.
4. Select **<Yes>** to finish connecting the TV and SoundStand by TV remote control.



- Switching the SoundStand's mode from TV to another automatically terminates TV SoundConnect.
- To connect the SoundStand to another TV, the existing connection must be terminated.
- Terminate the connection to the existing TV, then press the **►||** button on the remote control for 5 seconds to connect to another TV.



- The TV SoundConnect (SoundShare) function is supported by some Samsung TVs released from 2012 on. Check whether your TV supports the TV SoundConnect (SoundShare) function before you begin. (For further information, refer to the TV's user manual.)
- If your Samsung TV is released before 2014, check the SoundShare setting menu.
- If the distance between the TV and SoundStand exceeds 5m, the connection may not be stable or the audio may stutter. If this occurs, relocate the TV or SoundStand so that they are within operational range, and then re-establish the TV SoundConnect connection.



- TV SoundConnect Operational Range
  - Recommended pairing range: within 50cm
  - Recommended operational range: within 5m
- Play/Pause, Next, Prev buttons are not operable in TV SoundConnect mode

### ► Using the Bluetooth POWER On function

The Bluetooth POWER On function is available after you have successfully connected the SoundStand to a Bluetooth compatible TV using TV SoundConnect. When the Bluetooth POWER On function is ON, turning the connected TV on or off will turn the SoundStand's power on and off as well.

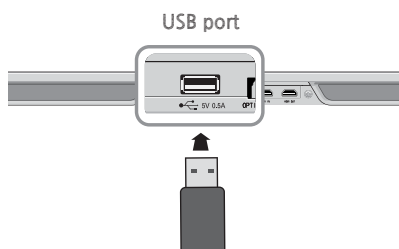
1. Connect the TV with your SoundStand using the TV SoundConnect function.
2. Press the **Bluetooth POWER** button on the SoundStand remote. "BLUETOOTH POWER ON" appears on the SoundStand's display.
  - BLUETOOTH POWER ON : The SoundStand turns on and off when you turn the TV on or off.
  - BLUETOOTH POWER OFF : The SoundStand only turns off when you turn the TV off.



- This function is supported only by some Samsung TVs released from 2013 on.
- If the SoundStand is connected to a TV through TV SoundConnect, and you turn the SoundStand off by turning off the TV, the Bluetooth Power function will not turn the SoundStand on, even if you connect another Bluetooth device to it.

## USB

You can play music files located on USB storage devices through the SoundStand.



1. Connect the USB device to the USB port on the back of the product.
2. Press the **SOURCE** button on the remote control or the **(F.)** button on the product's top panel repeatedly until **USB** appears.
3. **USB** appears on the display screen.
  - The SoundStand connection to the USB device is complete.
  - The SoundStand automatically turns off (Auto Power Off) if no USB device has been connected for more than 25 minutes.

- External HDDs are not supported.
- Mobile phone devices are not supported.
- File Format Type Compatibility list:

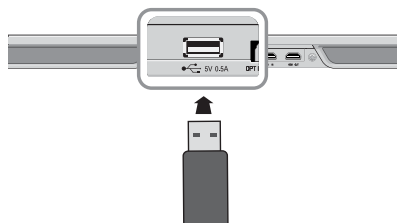
Format	Codec	Sampling Rate
*.mp3	MPEG 1 Layer2	16KHz ~ 48KHz
	MPEG 1 Layer3	
	MPEG 2 Layer3	
	MPEG 2.5 Layer3	
*.wma	Wave_Format_MSAudio1	16KHz ~ 96KHz
	Wave_Format_MSAudio2	
*.aac	AAC	16KHz ~ 96KHz
	AAC-LC	
	HE-AAC	24KHz ~ 96KHz
*.wav	-	16KHz ~ 48KHz
*.ogg	OGG 1.1.0	
*.flac	FLAC 1.1.0, FLAC 1.2.1	16KHz ~ 96KHz

### ► Before you connect a USB device

Be aware of the following:

- If the file name of a file or folder on a USB device exceeds 10 characters, it is not displayed on the SoundStand's display.
- This product may not be compatible with certain types of USB storage media.
- The SoundStand supports the FAT16 and FAT32 file systems.
  - The NTFS file system is not supported.
- Connect USB devices directly to the USB port of the product. Otherwise, you may encounter a USB compatibility problem.
- Do not connect multiple storage devices to the product via a multi-card reader. It may not operate properly.
- Digital camera PTP protocols are not supported.
- Do not remove the USB device while it is being read.
- DRM-protected music files (MP3, WMA) from a commercial web site cannot be played.

## SOFTWARE UPGRADE



Samsung may offer upgrades for the SoundStand's system firmware in the future.

If an upgrade is offered, you can upgrade the firmware by connecting a USB device with the firmware upgrade stored on it to the USB port on your SoundStand.

Note that if there are multiple upgrade files, you must load them onto the USB device singly and use them to upgrade the firmware one at a time.

Please visit [samsung.com](http://samsung.com) or contact the Samsung call centre to receive more information about downloading upgrades files.



- Insert a USB device containing the firmware upgrade into the USB port on the main unit.
- Do not disconnect the power or remove the USB device while upgrades are being applied. The main unit will turn off automatically after completing the firmware upgrade. When software is upgraded, all settings are reset to their factory default settings. We recommend you write down your settings so that you can easily reset them after the upgrade.
- Once the software upgrade is completed, turn off the product and then press and hold the (▶||) button for a while to reset the product.
- If the firmware fails to upgrade, we recommend formatting the USB device in FAT16 and trying again.
- Do not format the USB device in the NTFS format. The SoundStand does not support the NTFS file system.
- Depending on the manufacturer, some USB devices may not be supported.

# TROUBLESHOOTING

Before requesting service, please check the following.

<b>The unit will not turn on.</b>	
• Is the power cord plugged into the outlet?	→ Connect the power plug to the outlet.
<b>A function does not work when the button is pressed.</b>	
• Is there static electricity in the aerial?	→ Disconnect the power plug and connect it again.
<b>Sound is not produced.</b>	
• Is the Mute function on?	→ Press the Mute button to cancel the function.
• Is the volume set to minimum?	→ Adjust the volume .
<b>The remote control does not work.</b>	
• Are the batteries drained?	→ Replace with new batteries.
• Is the distance between the remote control and main unit too far?	→ Move closer to the unit.
<b>The TV SoundConnect (TV pairing) failed.</b>	
• Does your TV support TV SoundConnect?	→ TV SoundConnect is supported by some Samsung TVs released after 2012. Check your TV to see if it supports TV SoundConnect.
• Is your TV firmware the latest version?	→ Update your TV with the latest firmware.
• Does an error occur when connecting?	→ Contact the Samsung call centre.
• Reset the TV MODE and connect again.	→ Press and hold the ►► button for 5 seconds to reset the TV SoundConnect connection.

# APPENDIX

## SPECIFICATIONS

<b>Model name</b>	HW-H600, HW-H610	
<b>GENERAL</b>	<b>USB</b>	5V/0.5A
	<b>Weight</b>	5 kg
	<b>Dimensions (W x H x D)</b>	735 x 36.5 x 360 mm
	<b>Operating temperature range</b>	+5 °C ~ +35 °C
	<b>Operating humidity range</b>	10 % to 75 %
<b>AMPLIFIER</b>	<b>Rated output power</b>	80 W(MID/TWT = 8 OHM, SW = 4 OHM) THD = 10 %, 1 kHz
	<b>S/N ratio (analogue input)</b>	65 dB
	<b>Separation (1kHz)</b>	65 dB

- \* S/N ratio, distortion, separation, and usable sensitivity are based on measurements using AES (Audio Engineering Society) guidelines.
- \* Nominal specification
  - Samsung Electronics Co., Ltd reserves the right to change the specifications without notice.
  - Weight and dimensions are approximate.
  - For the power supply and Power Consumption, refer to the label attached to the product.

## LICENSE



Manufactured under license from Dolby Laboratories. Dolby and the double-D symbol are trademarks of Dolby Laboratories.



For DTS patents, see <http://patents.dts.com>. Manufactured under license from DTS Licensing Limited. DTS, the Symbol, & DTS and the Symbol together are registered trademarks, and DTS 2.0 Channel is a trademark of DTS, Inc. © DTS, Inc. All Rights Reserved.

## HDMI

The terms HDMI and HDMI High-Definition Multimedia Interface, and the HDMI Logo are trademarks or registered trademarks of HDMI Licensing LLC in the United States and other countries.

- To send inquiries and requests regarding open sources, contact Samsung via Email ([oss.request@samsung.com](mailto:oss.request@samsung.com)).



Hereby, Samsung Electronics, declares that this equipment is in compliance with the essential requirements and other relevant provisions of Directive 1999/5/EC.

The original Declaration of Conformity may be found at <http://www.samsung.com>, go to Support > Search Product Support and enter the model name.

This equipment may be operated in all EU countries.



## Contact SAMSUNG WORLD WIDE

If you have any questions or comments relating to Samsung products, please contact the SAMSUNG customer care Centre.

Country	Contact Centre ☎	Web Site
AUSTRIA	0800 - SAMSUNG (0800 - 7267864)	<a href="http://www.samsung.com/at/support">www.samsung.com/at/support</a>
BELGIUM	02-201-24-18	<a href="http://www.samsung.com/be/support">www.samsung.com/be/support</a> (Dutch) <a href="http://www.samsung.com/be_fr/support">www.samsung.com/be_fr/support</a> (French)
BOSNIA	051 331 999	<a href="http://www.samsung.com/support">www.samsung.com/support</a>
BULGARIA	07001 33 11, sharing cost	<a href="http://www.samsung.com/bg/support">www.samsung.com/bg/support</a>
CROATIA	062 726 786	<a href="http://www.samsung.com/hr/support">www.samsung.com/hr/support</a>
CZECH	800 - SAMSUNG (800-726786)	<a href="http://www.samsung.com/cz/support">www.samsung.com/cz/support</a>
DENMARK	70 70 19 70	<a href="http://www.samsung.com/dk/support">www.samsung.com/dk/support</a>
FINLAND	030-6227 515	<a href="http://www.samsung.com/fi/support">www.samsung.com/fi/support</a>
FRANCE	01 48 63 00 00	<a href="http://www.samsung.com/fr/support">www.samsung.com/fr/support</a>
GERMANY	0180 6 SAMSUNG bzw. 0180 6 7267864* (*0,20 €/Anruf aus dem dt. Festnetz, aus dem Mobilfunk max. 0,60 €/Anruf)	<a href="http://www.samsung.com/de/support">www.samsung.com/de/support</a>
CYPRUS	8009 4000 only from landline, toll free	<a href="http://www.samsung.com/gr/support">www.samsung.com/gr/support</a>
GREECE	80111-SAMSUNG (80111 726 7864) only from land line (+30) 210 6897691 from mobile and land line	
HUNGARY	0680SAMSUNG (0680-726-786) 0680PREMIUM (0680-773-648)	<a href="http://www.samsung.com/hu/support">http://www.samsung.com/hu/support</a>
ITALIA	800-SAMSUNG (800.7267864)	<a href="http://www.samsung.com/it/support">www.samsung.com/it/support</a>
LUXEMBURG	261 03 710	<a href="http://www.samsung.com/support">www.samsung.com/support</a>

Country	Contact Centre ☎	Web Site
MONTENEGRO	020 405 888	<a href="http://www.samsung.com/support">www.samsung.com/support</a>
SLOVENIA	080 697 267 090 726 786	<a href="http://www.samsung.com/si/support">www.samsung.com/si/support</a>
NETHERLANDS	0900-SAMSUNG (0900-7267864) (€ 0,10/Min)	<a href="http://www.samsung.com/nl/support">www.samsung.com/nl/support</a>
NORWAY	815 56480	<a href="http://www.samsung.com/no/support">www.samsung.com/no/support</a>
POLAND	0 801-172-678* lub +48 22 607-93-33 ** * (całkowity koszt połączenia jak za 1 impuls według taryfy operatora ** (koszt połączenia według taryfy operatora)	<a href="http://www.samsung.com/pl/support">www.samsung.com/pl/support</a>
PORTUGAL	808 20 7267	<a href="http://www.samsung.com/pt/support">www.samsung.com/pt/support</a>
ROMANIA	08008 SAMSUNG (08008 726 7864) TOLL FREE No.	<a href="http://www.samsung.com/ro/support">www.samsung.com/ro/support</a>
SERBIA	011 321 6899	<a href="http://www.samsung.com/rs/support">www.samsung.com/rs/support</a>
SLOVAKIA	0800 - SAMSUNG (0800-726 786)	<a href="http://www.samsung.com/sk/support">www.samsung.com/sk/support</a>
SPAIN	0034902172678	<a href="http://www.samsung.com/es/support">www.samsung.com/es/support</a>
SWEDEN	0771 726 7864 (SAMSUNG)	<a href="http://www.samsung.com/se/support">www.samsung.com/se/support</a>
SWITZERLAND	0848 726 78 64 (0848-SAMSUNG)	<a href="http://www.samsung.com/ch/support">www.samsung.com/ch/support</a> (German) <a href="http://www.samsung.com/ch_fr/support">www.samsung.com/ch_fr/support</a> (French)
U.K	0330 SAMSUNG (7267864)	<a href="http://www.samsung.com/uk/support">www.samsung.com/uk/support</a>
EIRE	0818 717100	<a href="http://www.samsung.com/ie/support">www.samsung.com/ie/support</a>
LITHUANIA	8-800-77777	<a href="http://www.samsung.com/lt/support">www.samsung.com/lt/support</a>
LATVIA	8000-7267	<a href="http://www.samsung.com/lv/support">www.samsung.com/lv/support</a>
ESTONIA	800-7267	<a href="http://www.samsung.com/ee/support">www.samsung.com/ee/support</a>



[Correct disposal of batteries in this product]

(Applicable in countries with separate collection systems)

This marking on the battery, manual or packaging indicates that the batteries in this product should not be disposed of with other household waste at the end of their working life. Where marked, the chemical symbols Hg, Cd or Pb indicate that the battery contains mercury, cadmium or lead above the reference levels in EC Directive 2006/66. If batteries are not properly disposed of, these substances can cause harm to human health or the environment.

To protect natural resources and to promote material reuse, please separate batteries from other types of waste and recycle them through your local, free battery return system.



Correct Disposal of This Product  
(Waste Electrical & Electronic Equipment)

(Applicable in countries with separate collection systems)

This marking on the product, accessories or literature indicates that the product and its electronic accessories (e.g. charger, headset, USB cable) should not be disposed of with other household waste at the end of their working life. To prevent possible harm to the environment or human health from uncontrolled waste disposal, please separate these items from other types of waste and recycle them responsibly to promote the sustainable reuse of material resources.

Household users should contact either the retailer where they purchased this product, or their local government office, for details of where and how they can take these items for environmentally safe recycling.

Business users should contact their supplier and check the terms and conditions of the purchase contract. This product and its electronic accessories should not be mixed with other commercial wastes for disposal.



AH68-02697E-02



AH68-02697E-02