

# User manual

## U28D590D

The color and the appearance may differ depending on the product, and the specifications are subject to change without prior notice to improve the performance.

# Table Of Contents

---

<b>BEFORE USING THE PRODUCT</b>	<b>7</b>	<b>Copyright</b>
	7	Icons used in this manual
	<b>8</b>	<b>Cleaning</b>
	<b>9</b>	<b>Securing the Installation Space</b>
	<b>9</b>	<b>Precautions for storage</b>
	<b>10</b>	<b>Safety Precautions</b>
	10	Symbols
	11	Electricity and Safety
	12	Installation and Safety
	14	Operation and Safety
	<b>18</b>	<b>Correct posture to use the product</b>
<b>PREPARATIONS</b>	<b>19</b>	<b>Checking the Contents</b>
	19	Checking the Components
	<b>20</b>	<b>Parts</b>
	20	Control Panel
	21	Direct Key guide
	22	Function Key Guide
	24	Reverse Side
	<b>25</b>	<b>Installation</b>
	25	Attaching the Stand
	26	Removing the Stand
	27	Adjusting the Product Tilt
	27	Anti-theft Lock
<b>CONNECTING AND USING A SOURCE DEVICE</b>	<b>28</b>	<b>Before Connecting</b>
	28	Pre-connection Checkpoints

# Table Of Contents

---

	<b>28</b>	<b>Connecting and Using a PC</b>
	28	Connection Using the HDMI Cable
	29	Connection Using the HDMI-DVI Cable
	29	Connection Using the DP Cable
	30	Connecting to Headphones or Speakers
	31	Connecting the Power
	33	Driver Installation
	34	Setting Optimum Resolution
<b>SCREEN SETUP</b>	<b>35</b>	<b>Brightness</b>
	35	Configuring <b>Brightness</b>
	<b>36</b>	<b>Contrast</b>
	36	Configuring <b>Contrast</b>
	<b>37</b>	<b>Sharpness</b>
	37	Configuring <b>Sharpness</b>
	<b>38</b>	<b>Game Mode</b>
	38	Configuring <b>Game Mode</b>
	<b>39</b>	<b>SAMSUNG MAGIC Bright</b>
	39	Configuring <b>SAMSUNG MAGIC Bright</b>
	<b>41</b>	<b>SAMSUNG MAGIC Angle</b>
	41	Configuring <b>SAMSUNG MAGIC Angle</b>
	<b>43</b>	<b>Color</b>
	43	Configuring <b>Color</b>
	<b>45</b>	<b>HDMI Black Level</b>
	45	Configuring the <b>HDMI Black Level</b> Settings
	<b>46</b>	<b>Response Time</b>
	46	Configuring the <b>Response Time</b>
<b>SCREEN ADJUSTMENT</b>	<b>47</b>	<b>Image Size</b>
	47	Changing the <b>Image Size</b>
	<b>49</b>	<b>H-Position &amp; V-Position</b>
	49	Configuring <b>H-Position &amp; V-Position</b>

# Table Of Contents

---

	50	<b>PIP/PBP</b>
	51	Configuring <b>PIP/PBP Mode</b>
	52	Configuring <b>Size</b>
	53	Configuring <b>Position</b>
	54	Configuring <b>Sound Source</b>
	55	Configuring <b>Source</b>
	57	Configuring <b>Image Size</b>
	61	Configuring <b>Contrast</b>
<b>COORDINATING OSD</b>	<b>63</b>	<b>Language</b>
	63	Configuring <b>Language</b>
	<b>64</b>	<b>Display Time</b>
	64	Configuring <b>Display Time</b>
	<b>65</b>	<b>Transparency</b>
	65	Changing <b>Transparency</b>
<b>SETUP AND RESET</b>	<b>66</b>	<b>Eco Saving</b>
	66	Configuring <b>Eco Saving</b>
	<b>67</b>	<b>PC/AV Mode</b>
	67	Configuring <b>PC/AV Mode</b>
	<b>68</b>	<b>Source Detection</b>
	68	Configuring <b>Source Detection</b>
	<b>69</b>	<b>Key Repeat Time</b>
	69	Configuring <b>Key Repeat Time</b>
	<b>70</b>	<b>Off Timer</b>
	70	Configuring <b>Off Timer</b>
	71	Configuring <b>Turn Off After</b>
	<b>72</b>	<b>Power LED On</b>
	72	Configuring <b>Power LED On</b>
	<b>73</b>	<b>Reset All</b>
	73	Initializing Settings ( <b>Reset All</b> )

# Table Of Contents

---

<b>INFORMATION MENU AND OTHERS</b>	<b>74</b>	<b>Information</b>
	74	Displaying Information
	<b>75</b>	<b>Configuring Brightness, Contrast and Sharpness from the Initial Screen</b>
	<b>76</b>	<b>Configuring Volume in the Initial Screen</b>
	76	Volume
<b>INSTALLING THE SOFTWARE</b>	<b>77</b>	<b>Easy Setting Box</b>
	77	Installing the Software
	78	Removing the Software
<b>TROUBLESHOOTING GUIDE</b>	<b>79</b>	<b>Requirements Before Contacting Samsung Customer Service Center</b>
	79	Testing the Product
	79	Checking the Resolution and Frequency
	79	Check the following.
	<b>82</b>	<b>Q &amp; A</b>
<b>SPECIFICATIONS</b>	<b>84</b>	<b>General</b>
	<b>85</b>	<b>PowerSaver</b>
	<b>86</b>	<b>Standard Signal Mode Table</b>
<b>APPENDIX</b>	<b>90</b>	<b>Contact SAMSUNG WORLD WIDE</b>
	<b>96</b>	<b>Responsibility for the Pay Service (Cost to Customers)</b>
	96	Not a product defect
	96	A Product damage caused by customer's fault
	96	Others
	<b>97</b>	<b>Correct Disposal</b>
	97	Correct Disposal of This Product (Waste Electrical & Electronic Equipment)
	<b>98</b>	<b>Terminology</b>

# Table Of Contents

---

## INDEX

# Before Using the Product

## Copyright

The contents of this manual are subject to change without notice to improve quality.

© 2014 Samsung Electronics

Samsung Electronics owns the copyright for this manual.

Use or reproduction of this manual in parts or entirety without the authorization of Samsung Electronics is prohibited.

Microsoft, Windows and Windows NT are registered trademarks of Microsoft Corporation.

VESA, DPM and DDC are registered trademarks of the Video Electronics Standards Association.

### Icons used in this manual



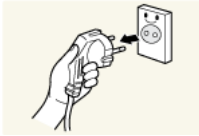
The following images are for reference only. Real-life situations may differ from what is shown in the images.

# Before Using the Product

## Cleaning

Exercise care when cleaning as the panel and exterior of advanced LCDs are easily scratched.

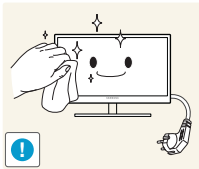
Take the following steps when cleaning.



1. Power off the monitor and computer.
2. Disconnect the power cord from the monitor.



Hold the power cable by the plug and do not touch the cable with wet hands. Otherwise, an electric shock may result.



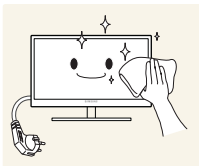
3. Wipe the monitor screen using a clean, soft and dry cloth.



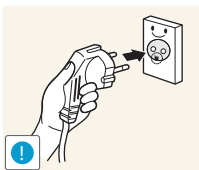
- Do not apply a cleaning agent that contains alcohol, solvent, or surfactant to the monitor.



- Do not spray water or detergent directly on the product.



4. Wet a soft and dry cloth in water and wring thoroughly to clean the exterior of the monitor.



5. Connect the power cord to the product after cleaning the product.
6. Power on the monitor and computer.



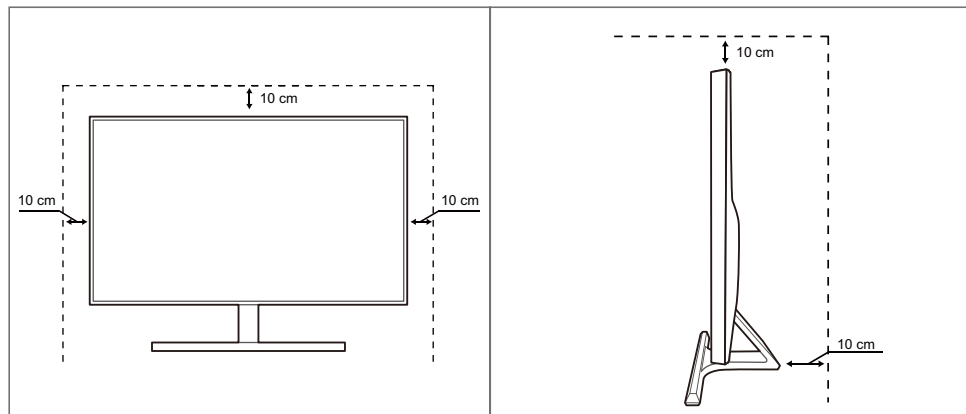
# Before Using the Product

## Securing the Installation Space

- Ensure some space around the product for ventilation. An internal temperature rise may cause fire and damage the product. Be sure to allow the amount of space as shown below or greater when installing the product.



The exterior may differ depending on the product.



## Precautions for storage





Be sure to contact Samsung Customer Service Center (page 90) if the inside of the monitor needs cleaning. (A service fee will be charged.)





# Before Using the Product

## Safety Precautions

Caution
RISK OF ELECTRIC SHOCK DO NOT OPEN
Caution: TO REDUCE THE RISK OF ELECTRIC SHOCK, DO NOT REMOVE COVER (OR BACK). THERE ARE NO USER SERVICEABLE PARTS INSIDE. REFER ALL SERVICING TO QUALIFIED PERSONNEL.

	This symbol indicates that high voltage is present inside. It is dangerous to make any kind of contact with any internal part of this product.
	This symbol alerts you that important literature concerning operation and maintenance has been included with this product.

## Symbols

 Warning	A serious or fatal injury may result if instructions are not followed.
 Caution	Personal injury or damage to properties may result if instructions are not followed.
	Activities marked by this symbol are prohibited.
	Instructions marked by this symbol must be followed.

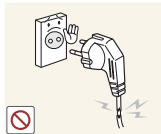
# Before Using the Product

## Electricity and Safety



The following images are for reference only. Real-life situations may differ from what is shown in the images.

### Warning



Do not use a damaged power cord or plug, or a loose power socket.

- An electric shock or fire may result.



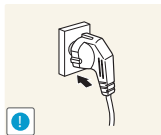
Do not plug many products into the same power socket.

- Otherwise, the socket may overheat and cause a fire.



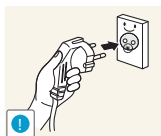
Do not touch the power plug with wet hands.

- Otherwise, an electric shock may result.



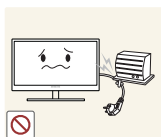
Insert the power plug all the way in so it is not loose.

- An unstable connection may cause a fire.



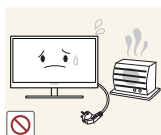
Ensure you connect the power plug to a grounded power socket. (type 1 insulated devices only).

- An electric shock or injury may result.



Do not bend or pull the power cord with force. Do not weigh the power cord down with a heavy object.

- A damaged power cord may cause an electric shock or fire.



Do not place the power cord or product near heat sources.

- An electric shock or fire may result.



Remove foreign substances such as dust around the plug pins and power socket with a dry cloth.

- Otherwise, a fire may result.

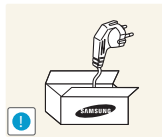
# Before Using the Product

## Caution



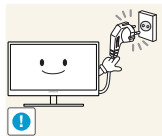
Do not unplug the power cord when the product is in use.

- The product may become damaged by an electric shock.



Do not use the power cord for products other than authorized products supplied by Samsung.

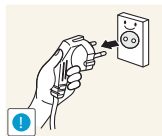
- An electric shock or fire may result.



Keep the power socket where the power cord is connected unobstructed.

- If any problem occurs in the product, unplug the power cable to completely cut the power to the product.

Power to the product cannot be completely cut off with the power button.



Hold the plug when disconnecting the power cord from the power socket.

- An electric shock or fire may result.

## Installation and Safety

## Warning



DO NOT PLACE CANDLES, INSECT REPELLANTS OR CIGARETTES ON TOP OF THE PRODUCT. DO NOT INSTALL THE PRODUCT NEAR HEAT SOURCES.

- Otherwise, a fire may result.



Avoid installing the product in a narrow space with bad ventilation, such as a bookshelf or wall closet.

- Otherwise, a fire may result due to an increased internal temperature.



Keep the plastic packaging bag for the product in a place that cannot be reached by children.

- Children may suffocate.

# Before Using the Product



Do not install the product on an unstable or vibrating surface (insecure shelf, sloped surface, etc.).

- The product may fall and break or cause a personal injury.
- Using the product in an area with excess vibration may damage the product or cause a fire.



Do not install the product in a vehicle or a place exposed to dust, moisture (water drips, etc.), oil, or smoke.

- An electric shock or fire may result.



Do not expose the product to direct sunlight, heat, or a hot object such as a stove.

- Otherwise, the product lifespan may be reduced, or a fire may result.



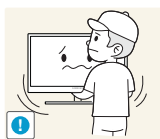
Do not install the product within the reach of young children.

- The product may fall and injure children.



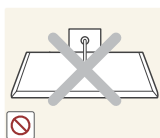
Edible oil, such as soybean oil, can damage or deform the product. Do not install the product in a kitchen or near a kitchen counter.

## Caution



Take care not to drop the product when moving it.

- Otherwise, product failure or personal injury may result.



Do not set down the product on its front.

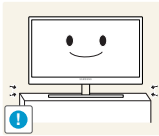
- The screen may become damaged.



When installing the product on a cabinet or shelf, make sure that the bottom edge of the front of the product is not protruding.

- The product may fall and break or cause a personal injury.
- Install the product only on cabinets or shelves of the right size.

# Before Using the Product



Put down the product carefully.

- The product may fall and break or cause a personal injury.



Installing the product in an unusual place (a place exposed to a lot of fine dust, chemical substances, extreme temperatures or a significant presence of moisture, or a place where the product will operate continuously for an extended period of time) may seriously affect its performance.

- Be sure to consult Samsung Customer Service Center (page 90) before installation if you want to install the product at such a place.

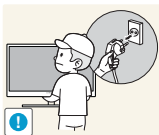
## Operation and Safety

### Warning



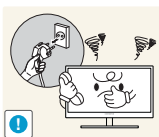
High voltage runs through the product. Do not attempt to disassemble, repair, or modify the product on your own.

- An electric shock or fire may result.
- Contact Samsung Customer Service Center (page 90) for repair.



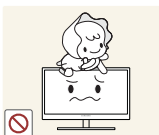
Before moving the product, turn off the power switch and disconnect the power cable and all other connected cables.

- Otherwise, the power cord may be damaged and a fire or electric shock may result.



If the product generates a strange noise, a burning smell, or smoke, remove the power cord immediately and contact Samsung Customer Service Center (page 90).

- An electric shock or fire may result.



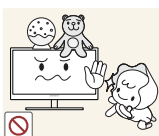
Do not let children hang from the product or climb on top of it.

- The product may fall, and your child may become injured or seriously harmed.



If the product falls or the exterior is damaged, power off the product, remove the power cord, and contact Samsung Customer Service Center (page 90).

- Otherwise, an electric shock or fire may result.



Do not put a heavy object, toy, or sweets on top of the product.

- The product or heavy objects may fall as children try to reach for the toy or sweets resulting in a serious injury.

# Before Using the Product



If there is a thunderstorm or lightning strike, turn off the power and disconnect the power cable.

- An electric shock or fire may result.



Do not drop objects on the product or apply impact.

- An electric shock or fire may result.



Do not move the product by pulling the power cord or any cable.

- Otherwise, the cable may be damaged and product failure, an electric shock or fire may result.



If a gas leakage is found, do not touch the product or power plug. Also, ventilate the area immediately.

- Sparks can cause an explosion or fire.



Do not lift or move the product by pulling the power cord or any cable.

- Otherwise, the cable may be damaged and product failure, an electric shock or fire may result.



Do not use or keep combustible spray or an inflammable substance near the product.

- An explosion or fire may result.



Ensure the vents are not blocked by tablecloths or curtains.

- Otherwise, a fire may result from an increased internal temperature.



Do not insert a metallic object (a chopstick, coin, hair pin, etc.) or inflammable object (paper, match, etc.) into the vent or ports of the product.

- If water or any foreign substance enters the product, be sure to power off the product, remove the power cord, and contact Samsung Customer Service Center (page 90).
- Product failure, an electric shock or fire may result.

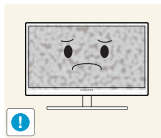


Do not place objects containing liquid (vases, pots, bottles, etc) or metallic objects on top of the product.

- If water or any foreign substance enters the product, be sure to power off the product, remove the power cord, and contact Samsung Customer Service Center (page 90).
- Product failure, an electric shock or fire may result.

# Before Using the Product

## Caution



Leaving the screen fixed on a stationary image for an extended period of time may cause afterimage burn-in or defective pixels.

- If you are not going to use the product for an extended period of time, activate power-saving mode or a moving-picture screen saver.



Disconnect the power cord from the power socket if you do not plan on using the product for an extended period of time (vacation, etc.).

- Otherwise, a fire may result from accumulated dust, overheating, an electric shock, or electric leakage.



Use the product at the recommended resolution and frequency.

- Otherwise, Your eyesight may deteriorate.



Do not put DC power adapters together.

- Otherwise, a fire may result.



Remove the plastic bag from the DC power adapter before you use it.

- Otherwise, a fire may result.



Do not let water enter the DC power device or get the device wet.

- An electric shock or fire may result.
- Avoid using the product outdoors where it can be exposed to rain or snow.
- Be careful not to get the DC power adapter wet when you wash the floor.

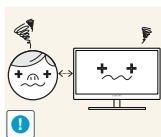


Do not put the DC power adapter near to any heating apparatus.

- Otherwise, a fire may result.



Keep the DC power adapter in a well-ventilated area.



Looking at the screen too close for an extended period of time can deteriorate your eyesight.



# Before Using the Product



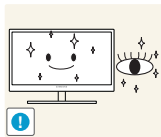
Do not hold the monitor upside-down or move it by holding the stand.

- The product may fall and break or cause a personal injury.



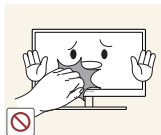
Do not use humidifiers or stoves around the product.

- An electric shock or fire may result.

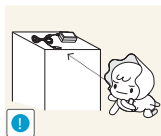


Rest your eyes for more than 5 minutes for every 1 hour of product use.

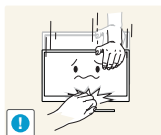
- Eye fatigue will be relieved.



Do not touch the screen when the product has been turned on for an extended period of time as it will become hot.

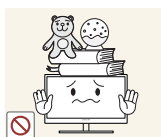


Store the small accessories used with the product out of reach of children.



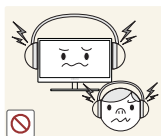
Exercise caution when adjusting the product angle or stand height.

- Otherwise, children's fingers or hands may become stuck and injured.
- Tilting the product excessively may cause it to fall and result in personal injury.



Do not place heavy objects on the product.

- Product failure or personal injury may result.



When using headphones or earphones, do not turn the volume too high.

- Having the sound too loud may damage your hearing.

# Before Using the Product

## Correct posture to use the product



Use the product in the correct posture as follows:

- Straighten your back.
- Allow a distance of 45 to 50 cm between your eye and the screen, and look slightly downward at the screen.  
Keep your eyes directly in front of the screen.
- Adjust the angle so light does not reflect on the screen.
- Keep your forearms perpendicular to your upper arms and level with the back of your hands.
- Keep your elbows at about a right angle.
- Adjust the height of the product so you can keep your knees bent at 90 degrees or more, your heels attached to the floor, and your arms lower than your heart.

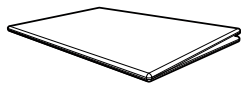
## 1.1 Checking the Contents

### 1.1.1 Checking the Components



- Contact the dealer from whom you purchased the product if any item is missing.
- The appearance of the components and items sold separately may differ from the image shown.

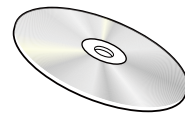
#### Components



Quick setup guide



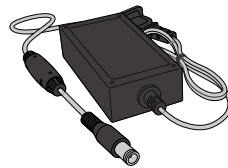
Warranty card  
(Not available in some locations)



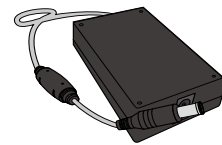
User manual  
(optional)



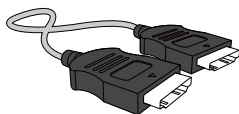
Power cable  
(Only provided with the detachable DC power adapter.)



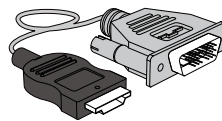
DC power adapter  
(Integrated)  
(optional)



DC power adapter  
(Detachable)  
(optional)



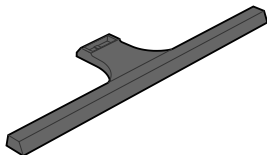
HDMI cable (optional)



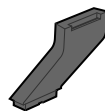
HDMI-DVI cable (optional)



DP cable (optional)



Stand base



Stand neck



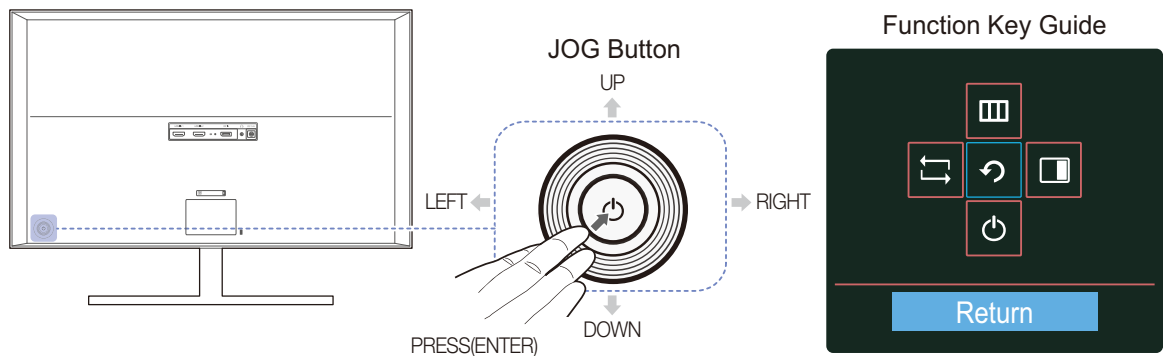
- Components may vary depending on the country.
- Recommend to use the HDMI cable and DP cable which is provided by the supplier.
- The optimal resolution may not be available when using a non-high speed HDMI or HDMI-DVI cable.

## 1.2 Parts

### 1.2.1 Control Panel



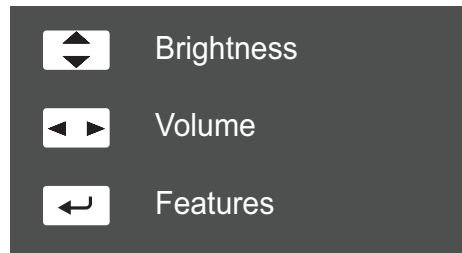
The color and shape of parts may differ from what is shown. Specifications are subject to change without notice to improve quality.



Icons	Description
JOG Button	<p>Multi directional button that helps navigate.</p> <p> The JOG button is located at the bottom left on the back of the product. The button can be used to move up, down, left or right, or as Enter.</p> <p>The button can be used to move up, down, left or right, or as Enter.</p>
Function Key Guide	<p>Press the JOG button when the screen is turned on. The Function Key Guide will appear. To access the onscreen menu when the guide is displayed, press the corresponding direction button again.</p> <p> Function Key Guide may vary depending on the function or product model. Please refer to the actual product.</p>

## 1.2.2 Direct Key guide

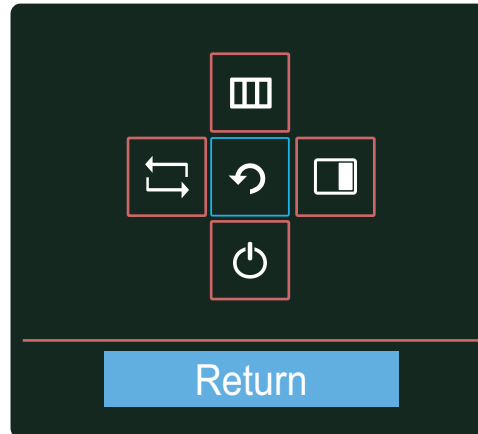
For guidance on shortcut keys, the below OSD (On Screen Display) will be displayed if you move the JOG button in any direction.



- UP/DOWN: Adjust **Brightness/Contrast/Sharpness**
- LEFT/RIGHT: Adjust **Volume**.
- PRESS(ENTER): Display Function Key Guide.

### 1.2.3 Function Key Guide

To enter the main menu or to use other items, press the JOG button to display the Function Key Guide. You can exit by pressing the JOG button again.



- UP/DOWN/LEFT/RIGHT: Move to the item you want. The description for each item will appear when the focus changes.
- PRESS(ENTER): The selected item will be applied.

Icons	Description
	Selects [] to change the input signal by moving the JOG button in the Function Key Guide screen. A message will appear on the top left corner of the screen if the input signal has been changed.
	<p>Selects [] by moving the JOG button in the function key guide screen. The OSD (On Screen Display) of your Monitor's feature appears.</p> <p>OSD control lock: Maintain the current settings, or lock the OSD control to prevent unintended changes to settings. Enable/Disable: To lock/unlock the OSD control, press the LEFT button for 10 seconds when the main menu displayed.</p> <p> If the OSD control is locked, <b>Brightness</b> and <b>Contrast</b> can be adjusted. <b>PIP/PBP</b> is available. <b>Information</b> can be viewed.</p>
	Selects [] by moving the JOG button in the function key guide screen. Press the button when configuring settings for the <b>Contrast</b> function is required.
	Selects [] to turn the Monitor off by moving the JOG button in the function key guide screen.



Actual models because of functional variation, Function key guide options will be different. Please run the corresponding function based on the actual icon and description.



When the monitor displays nothing (i.e. Power saving mode or Non-signal mode), 2 direct keys for control source and power could be used as below.

JOG Button	Power saving/Non-signal mode
UP	Source Change
Down	
PRESS(ENTER) for 2 seconds	Power Off



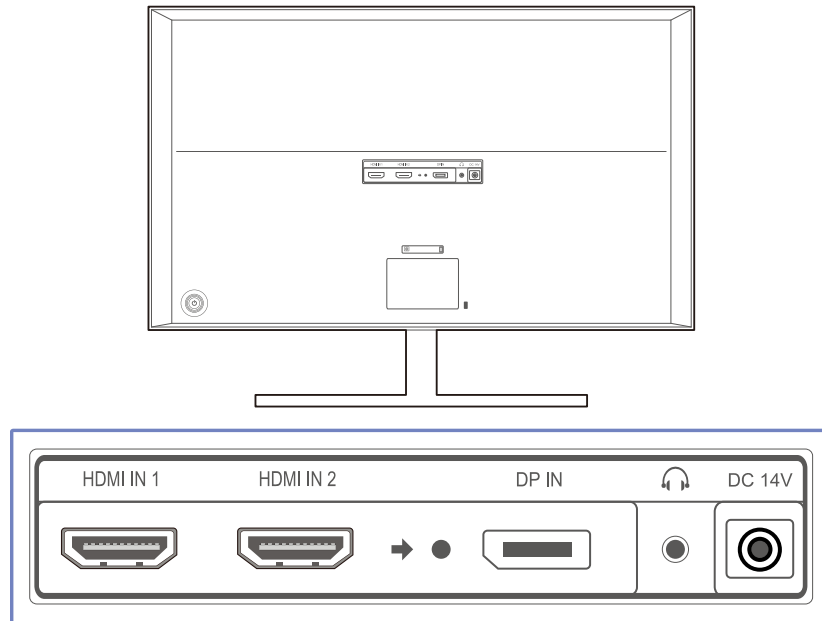
When the monitor displays the Main menu the JOG Button could be used as below.







JOG Button	Action
UP/DOWN	- Move the option
LEFT	- Exit the Main menu. - Close Sublist without saving value. - Value decreases in the slider.
RIGHT	- Move to next depth. - Value increases in the slider.
PRESS(ENTER)	- Move to next depth. - Save the value and close Sublist.

## 1.2.4 Reverse Side



The color and shape of parts may differ from what is shown. Specifications are subject to change without notice to improve quality.



Port	About ports
<div>HDMI IN 1</div>  <div>HDMI IN 2</div> 	Connect to a source device using an HDMI cable.
<div>DP IN</div> 	Connects to a PC using a DP cable.
	Connect to an audio output device such as headphones.  The sound could only be heard when using the HDMI to HDMI cable or DP cable.
<div>DC 14V</div> 	Connects to the DC power adapter.

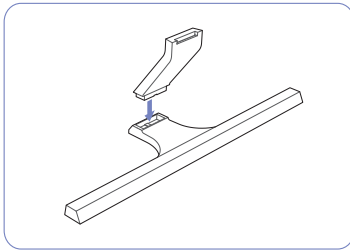


## 1.3 Installation

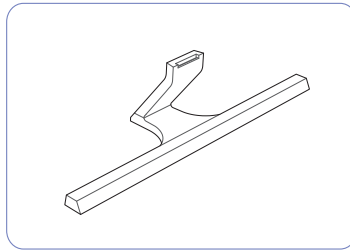
### 1.3.1 Attaching the Stand



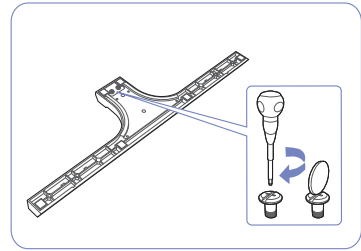
Before assembling the product, place the product down on a flat and stable surface so that the screen is facing downwards.



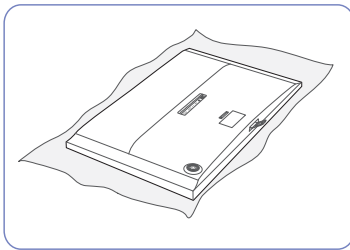
Insert the stand neck into the stand base in the direction shown in the figure.



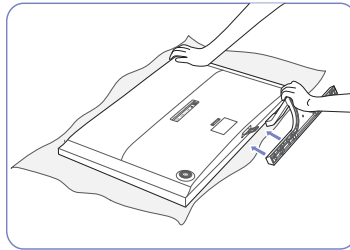
Check that the stand neck is firmly connected.



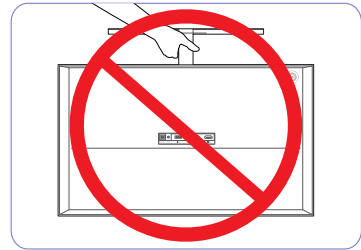
Tightly fasten the connecting screw at the bottom of the stand base.



Place a soft cloth over the table to protect the product and place the product onto the cloth so that the front of the product is facing downwards.



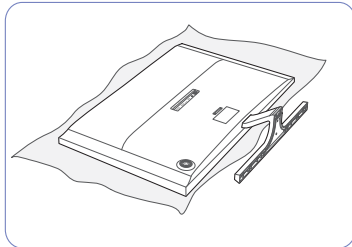
Hold the main body of the product with your hand as shown by the figure. Push the assembled stand into the main body in the direction of the arrow as shown in the figure.



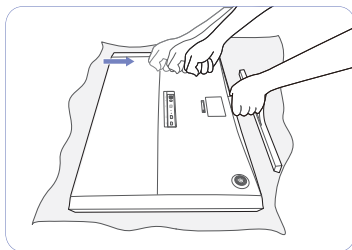
#### - Caution

Do not hold the product upside down only by the stand.

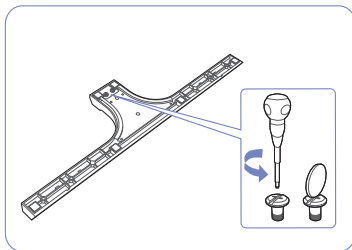
## 1.3.2 Removing the Stand



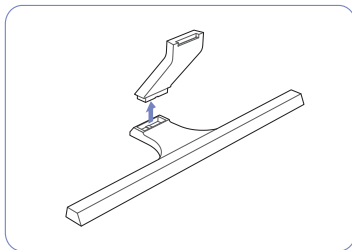
Place a soft cloth over the table to protect the product and place the product onto the cloth so that the front of the product faces downwards.



While holding the stand neck with one hand, pound the other fisted hand down onto the top of the stand base in the direction of the arrow to detach the stand base.



Turn the connecting screw at the bottom of the stand base to separate it.

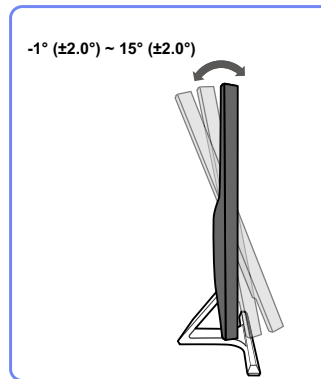


Remove the stand neck from the stand base by pulling it in the direction of the arrow as shown in the figure.

### 1.3.3 Adjusting the Product Tilt



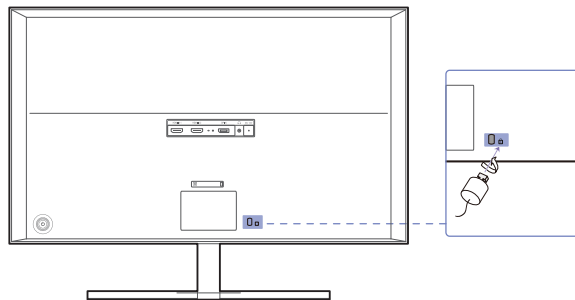
The color and shape of parts may differ from what is shown. Specifications are subject to change without notice to improve quality.



- You can adjust the tilt of your monitor.
- Hold the lower part of the product and adjust the tilt carefully.

### 1.3.4 Anti-theft Lock

An anti-theft lock allows you to use the product securely even in public places. The locking device shape and locking method depend on the manufacturer. Refer to the user guide provided with your anti-theft locking device for details. The lock device is sold separately.



The color and shape of parts may differ from what is shown. Specifications are subject to change without notice to improve quality.

#### To lock an anti-theft locking device:

- 1 Fix the cable of your anti-theft locking device to a heavy object such as a desk.
- 2 Put one end of the cable through the loop on the other end.
- 3 Insert the locking device into the anti-theft lock slot at the back of the product.
- 4 Lock the locking device.



- An anti-theft locking device can be purchased separately.
- Refer to the user guide provided with your anti-theft locking device for details.
- Anti-theft locking devices can be purchased at electronics retailers or online.

## 2.1 Before Connecting

### 2.1.1 Pre-connection Checkpoints

- Before connecting a source device, read the user manual provided with it.  
The number and locations of ports on source devices may differ from device to device.
- Do not connect the power cable until all connections are completed.  
Connecting the power cable during connection may damage the product.
- Check the types of ports at the back of the product you want to connect.

## 2.2 Connecting and Using a PC

Select a connection method suitable for your PC.

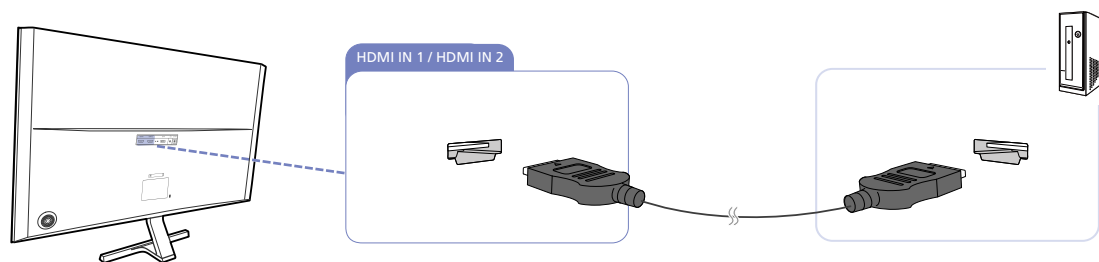


Connecting parts may differ in different products.

### 2.2.1 Connection Using the HDMI Cable



Do not connect the power cable before connecting all other cables.  
Ensure you connect a source device first before connecting the power cable.



- 1 Connect the [HDMI IN 1] or [HDMI IN 2] port on the back of the product to the HDMI port on the PC using an HDMI cable.
- 2 Connect the DC power adapter to the product and a power socket.  
Next, turn on the power switch on the PC. (For details, refer to "2.2.5 Connecting the Power".)
- 3 Change the input source to **HDMI 1** or **HDMI 2** controlling the JOG button UP/DOWN, when input source is not set.

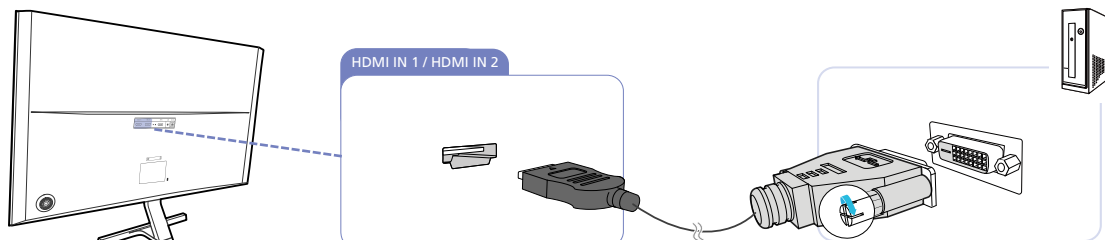


Provided ports may vary depending on the product.

### 2.2.2 Connection Using the HDMI-DVI Cable



Do not connect the power cable before connecting all other cables.  
Ensure you connect a source device first before connecting the power cable.



- 1 Connect the HDMI-DVI cable to the [HDMI IN 1] or [HDMI IN 2] port on the back of the product and the DVI port on the PC.
- 2 Connect the DC power adapter to the product and a power socket.  
Next, turn on the power switch on the PC. (For details, refer to "2.2.5 Connecting the Power".)
- 3 Change the input source to **HDMI 1** or **HDMI 2** controlling the JOG button UP/DOWN, when input source is not set.

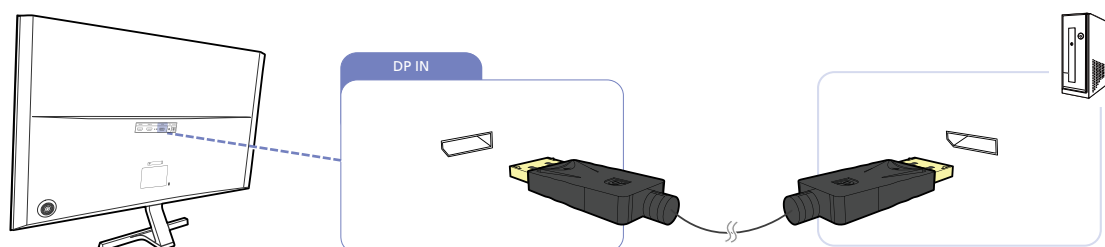


Provided ports may vary depending on the product.

### 2.2.3 Connection Using the DP Cable



Do not connect the power cable before connecting all other cables.  
Ensure you connect a source device first before connecting the power cable.



- 1 Connect the DP cable to the [DP IN] port on the back of the product and the DP port on the PC.
- 2 Connect the DC power adapter to the product and a power socket. Next, turn on the power switch on the PC. (For details, refer to "2.2.5 Connecting the Power".)
- 3 Change the input source to **DisplayPort** controlling the JOG button UP/DOWN, when input source is not set.



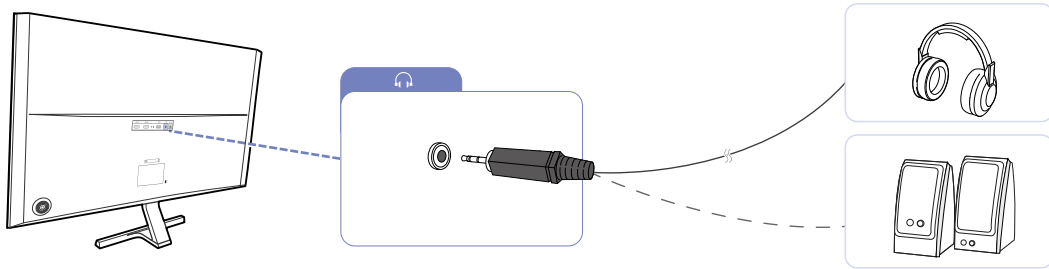
Provided ports may vary depending on the product.

### 2.2.4 Connecting to Headphones or Speakers



Do not connect the power cable before connecting all other cables.

Ensure you connect a source device first before connecting the power cable.



- 1 Connect an audio output device such as headphones or speakers to [🎧] port on the product.

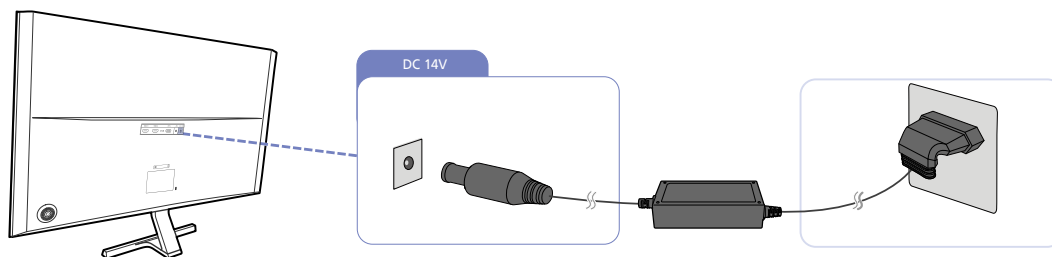



The sound could only be heard when using the HDMI to HDMI cable or DP cable.

### 2.2.5 Connecting the Power

#### Power connection using integrated DC power adapter

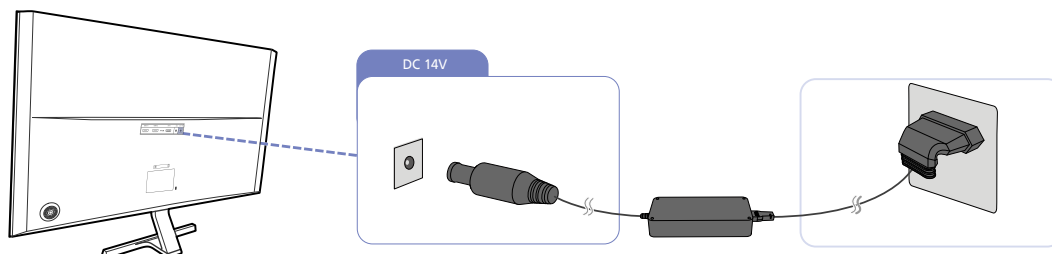
- Connect the power adapter to [DC 14V] jack on the rear of the product.  
Plug in the power cable to the power socket.



 The input voltage is switched automatically.

#### Power connection using detachable DC power adapter

- Connect the power cable to the DC power adapter.  
Then, connect the DC power adapter to the [DC 14V] port on the back of the product.  
Next, connect the power cable to the power outlet.

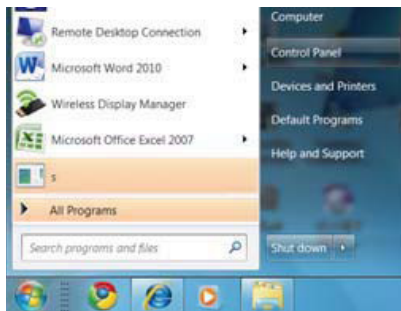


 The input voltage is switched automatically.

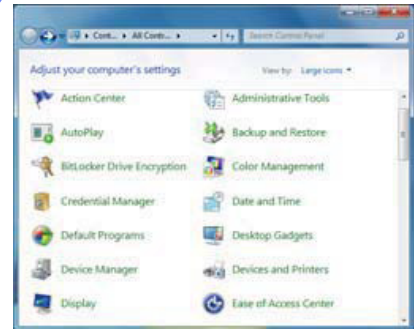
## Changing the sound settings on Windows

Control Panel → Audio → Speaker → Speaker Setup

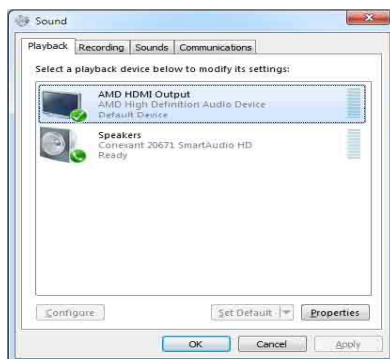
1



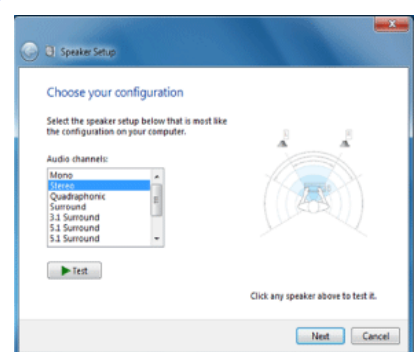
2



3



4



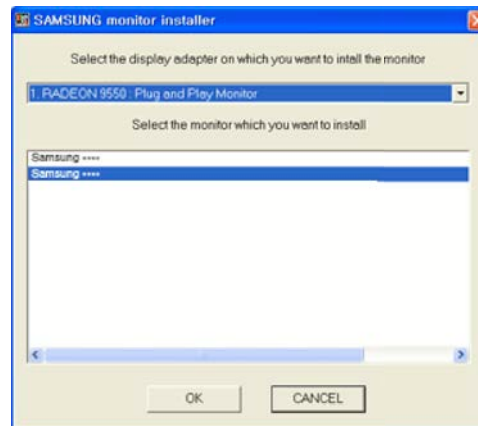


### 2.2.6 Driver Installation



- You can set the optimum resolution and frequency for this product by installing the corresponding drivers.
- An installation driver is contained on the CD supplied with the product.
- If the file provided is faulty, visit the Samsung homepage (<http://www.samsung.com/>) and download the file.

- 1 Insert the user manual CD provided with the product into the CD-ROM drive.
- 2 Click "Windows Driver".
- 3 Follow the instructions given on the screen to proceed with installation.
- 4 Select your product model from the list of models.

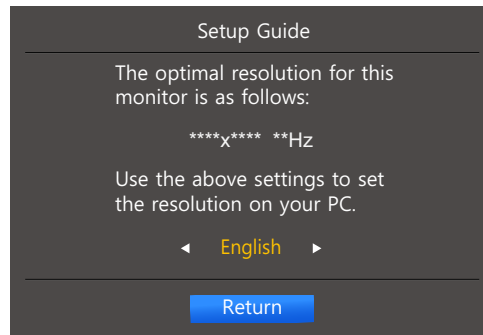


- 5 Go to Display Properties and check that the resolution and refresh rate are appropriate. Refer to your Windows OS manual for further details.

### 2.2.7 Setting Optimum Resolution

An information message about setting optimum resolution will appear if you power on the product for the first time after purchase.

Select a language on the product and change the resolution on your PC to the optimum setting.



- 1 Select a language by moving the JOG button LEFT/RIGHT. Next, press the JOG button.
- 2 To hide the information message, press the JOG button.



- If the optimum resolution is not selected, the message will appear up to three times for a specified time even when the product is turned off and on again.
- The optimum resolution can also be selected in **Control Panel** on your PC.

## Screen Setup

Configure the screen settings such as brightness.

A detailed description of each function is provided. Refer to your product for details.

### 3.1 Brightness

You can adjust the general brightness of the picture. (Range: 0~100)

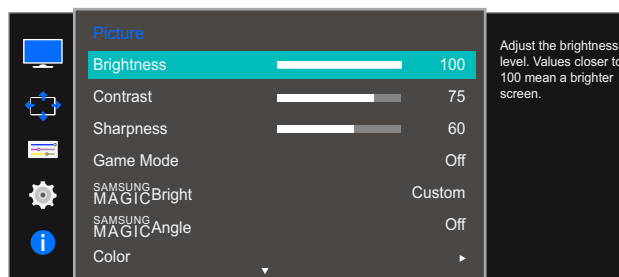
A higher value will make the picture appear brighter.



- This menu is not available when **SAMSUNG MAGICBright** is set to **Dynamic Contrast** mode.
- This menu is not available when **Eco Saving** is enabled.

#### 3.1.1 Configuring Brightness

- 1 When the Function Key Guide appears, select [ ] by moving the JOG button UP. Next, press the JOG button.
- 2 Move to **Picture** controlling the JOG button UP/DOWN and press the JOG button.
- 3 Move to **Brightness** controlling the JOG button UP/DOWN and press the JOG button. The following screen will appear.




- 4 Adjust the **Brightness** controlling the JOG button LEFT/RIGHT.
- 5 The selected option will be applied.

## 3.2 Contrast


Adjust the contrast between the objects and background. (Range: 0~100)

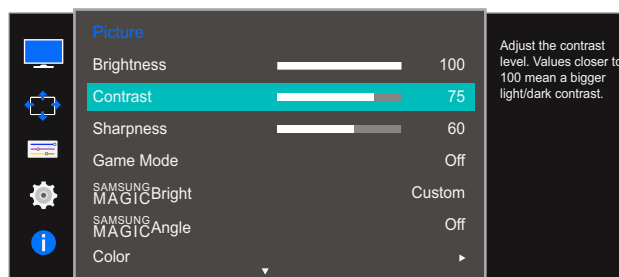
A higher value will increase the contrast to make the object appear clearer.



- This option is not available when **SAMSUNG MAGICBright** is in **Cinema** or **Dynamic Contrast** mode.
- This menu is not available when **Game Mode** is enabled.
- This menu is not available when **PIP/PBP Mode** is set to **On** and the **Size** is set to  (PBP Mode).

### 3.2.1 Configuring Contrast

- 1 When the Function Key Guide appears, select  by moving the JOG button UP. Next, press the JOG button.
- 2 Move to **Picture** controlling the JOG button UP/DOWN and press the JOG button.
- 3 Move to **Contrast** controlling the JOG button UP/DOWN and press the JOG button. The following screen will appear.



- 4 Adjust the **Contrast** controlling the JOG button LEFT/RIGHT.
- 5 The selected option will be applied.

### 3.3 Sharpness

Make the outline of objects more clear or blurry. (Range: 0~100)

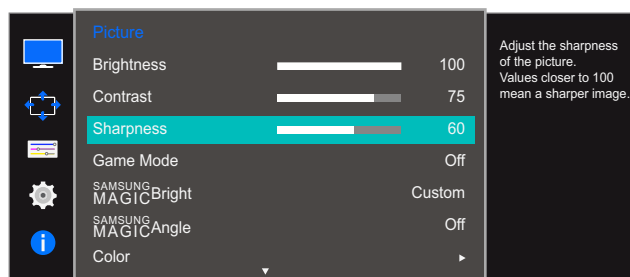
A higher value will make the outline of objects clearer.



- This option is not available when **SAMSUNG MAGICBright** is in **Cinema** or **Dynamic Contrast** mode.
- This menu is not available when **Game Mode** is enabled.
- Not available when **PIP/PBP Mode** is set to **On**.

#### 3.3.1 Configuring Sharpness

- 1 When the Function Key Guide appears, select [ ] by moving the JOG button UP. Next, press the JOG button.
- 2 Move to **Picture** controlling the JOG button UP/DOWN and press the JOG button.
- 3 Move to **Sharpness** controlling the JOG button UP/DOWN and press the JOG button. The following screen will appear.



- 4 Adjust the **Sharpness** controlling the JOG button LEFT/RIGHT.
- 5 The selected option will be applied.

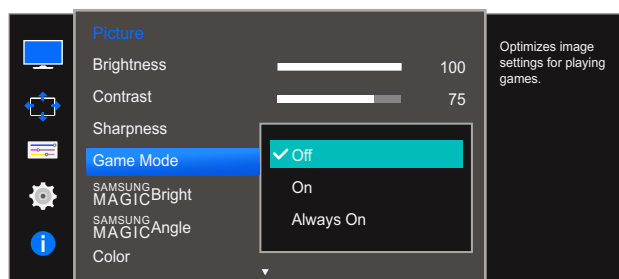
## 3.4 Game Mode

Configure the product screen settings for game mode.

Use this feature when playing games on a PC or when a game console such as PlayStation™ or Xbox™ is connected.

### 3.4.1 Configuring Game Mode

- 1 When the Function Key Guide appears, select [ ] by moving the JOG button UP. Next, press the JOG button.
- 2 Move to **Picture** controlling the JOG button UP/DOWN and press the JOG button.
- 3 Move to **Game Mode** controlling the JOG button UP/DOWN and press the JOG button. The following screen will appear.



- 4 Move to the desired option controlling the JOG button UP/DOWN and press the JOG button.
- 5 The selected option will be applied.



- When the monitor turns off, enters power-saving mode or changes input sources, **Game Mode** turns **Off** even if it is set to **On**.
- If you want to keep **Game Mode** enabled all the time, select **Always On**.

## 3.5 SAMSUNG MAGIC Bright

This menu provides an optimum picture quality suitable for the environment where the product will be used.

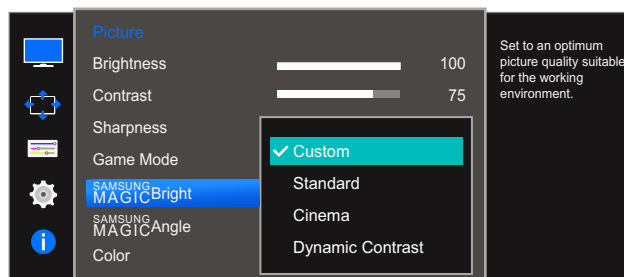


- This menu is not available when **Eco Saving** is enabled.
- This menu is not available when **SAMSUNG MAGICAngle** is enabled.
- This menu is not available when **Game Mode** is enabled.
- Not available when **PIP/PBP Mode** is set to **On**.

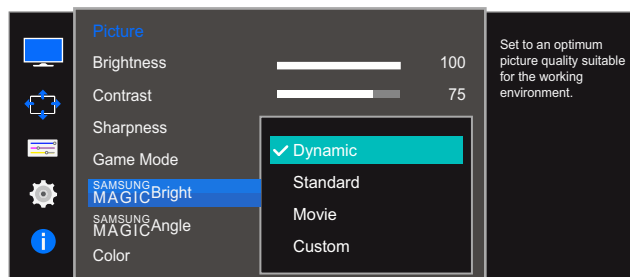
You can customize the brightness to suit your preferences.

### 3.5.1 Configuring SAMSUNG MAGIC Bright

- 1 When the Function Key Guide appears, select [ ] by moving the JOG button UP. Next, press the JOG button.
- 2 Move to **Picture** controlling the JOG button UP/DOWN and press the JOG button.
- 3 Move to **SAMSUNG MAGICBright** controlling the JOG button UP/DOWN and press the JOG button. The following screen will appear.



- **Custom:** Customize the contrast and brightness as required.
- **Standard:** Obtain a picture quality suitable for editing documents or using Internet.
- **Cinema:** Obtain the brightness and sharpness of TVs suitable for enjoying video and DVD content.
- **Dynamic Contrast:** Obtain balanced brightness through automatic contrast adjustment.



When the external input is connected through HDMI/DP and **PC/AV Mode** is set to **AV**, **SAMSUNG MAGICBright** has four automatic picture settings (**Dynamic**, **Standard**, **Movie** and **Custom**) that are preset at the factory. You can activate either **Dynamic**, **Standard**, **Movie** or **Custom**. You can select **Custom** which automatically recalls your personalized picture settings.

- **Dynamic**: Select this mode to view a sharper image than in **Standard** mode.
- **Standard**: Select this mode when the surroundings are bright. This also provides a sharp image.
- **Movie**: Select this mode when the surroundings are dark. This will save power and reduce eye fatigue.
- **Custom**: Select this mode when you want to adjust the image according to your preferences.

4 Move to the desired option controlling the JOG button UP/DOWN and press the JOG button.

5 The selected option will be applied.



## 3.6 SAMSUNG MAGIC Angle

**SAMSUNG MAGIC Angle** allows you to configure the settings to obtain the optimum picture quality according to your viewing angle.

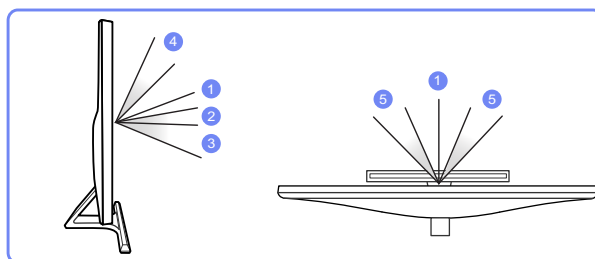
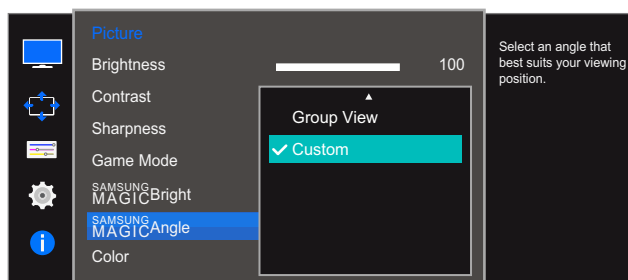
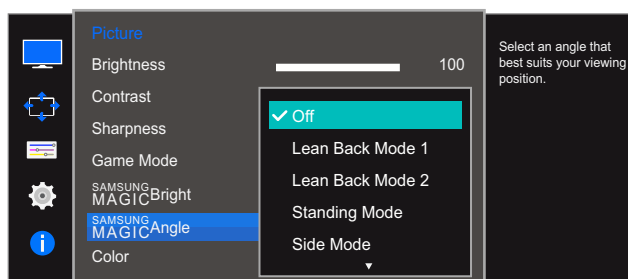


- This option is not available when **SAMSUNG MAGIC Bright** is in **Cinema** or **Dynamic Contrast** mode.
- This menu is not available when **Game Mode** is enabled.
- Not available when **PIP/PBP Mode** is set to **On**.

This feature provides the viewing angle, brightness, and tint to suit your preferences.

### 3.6.1 Configuring SAMSUNG MAGIC Angle

- 1 When the Function Key Guide appears, select [ ] by moving the JOG button UP. Next, press the JOG button.
- 2 Move to **Picture** controlling the JOG button UP/DOWN and press the JOG button.
- 3 Move to **SAMSUNG MAGIC Angle** controlling the JOG button UP/DOWN and press the JOG button. The following screen will appear.



- **Off** ①: Select this option to view directly in front of the product.

- **Lean Back Mode 1** ②: Select this option to view from a place slightly lower than the product.
  - **Lean Back Mode 2** ③: Select this option to view from a place lower than Lean Back Mode 1.
  - **Standing Mode** ④: Select this option to view from a place higher than the product.
  - **Side Mode** ⑤: Select this option to view from either side of the product.
  - **Group View**: Select this option for more than one viewer to view from places ①, ④ and ⑤.
  - **Custom**: **Lean Back Mode 1** will be applied by default if **Custom** is selected.
- 4 Move to the desired option controlling the JOG button UP/DOWN and press the JOG button.
- 5 The selected option will be applied.

## 3.7 Color

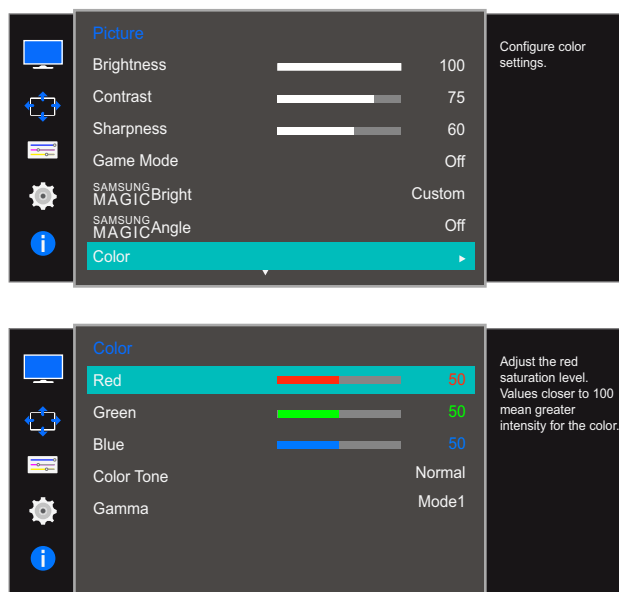
A detailed description of each function is provided. Refer to your product for details.



- Adjust the tint of the screen. This menu is not available when **SAMSUNG MAGICBright** is set to **Cinema** or **Dynamic Contrast** mode.
- This menu is not available when **Game Mode** is enabled.
- Not available when **PIP/PBP Mode** is set to **On**.

### 3.7.1 Configuring Color

- When the Function Key Guide appears, select [ ] by moving the JOG button UP. Next, press the JOG button.
  - Move to **Picture** controlling the JOG button UP/DOWN and press the JOG button.
  - Move to **Color** controlling the JOG button UP/DOWN and press the JOG button.
- The following screen will appear.



- Red:** Adjust the red saturation level. Values closer to 100 mean greater intensity for the color.
- Green:** Adjust the green saturation level. Values closer to 100 mean greater intensity for the color.
- Blue:** Adjust the blue saturation level. Values closer to 100 mean greater intensity for the color.
- Color Tone:** Select a color tone that best suits your viewing needs.
  - Cool 2:** Set the color temperature to be cooler than **Cool 1**.
  - Cool 1:** Set the color temperature to be cooler than **Normal** mode.
  - Normal:** Display the standard color tone.
  - Warm 1:** Set the color temperature to be warmer than **Normal** mode.

- **Warm 2:** Set the color temperature to be warmer than **Warm 1**.
- **Custom:** Customize the color tone.



When the external input is connected through HDMI and **PC/AV Mode** is set to **AV**, **Color Tone** has four color temperature settings (**Cool**, **Normal**, **Warm** and **Custom**).

- **Gamma:** Adjust the middle level of luminance.
    - **Mode1**
    - **Mode2**
    - **Mode3**
- 4 Move to the desired option by controlling the JOG button and then press the JOG button.
- 5 The selected option will be applied.


## 3.8 HDMI Black Level

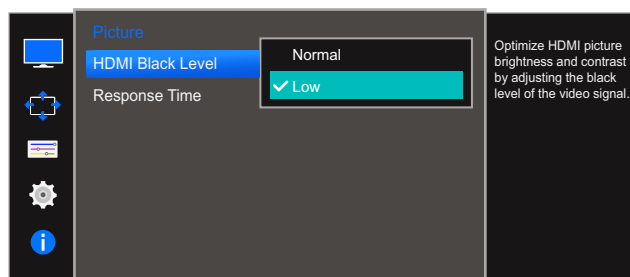
If a DVD player or set-top box is connected to the product via HDMI, image quality degradation (contrast/color degradation, black level, etc.) may occur, depending on the connected source device. In such case, **HDMI Black Level** can be used to adjust the image quality. If this is the case, correct the degraded picture quality using **HDMI Black Level**.



- This function is only available in **HDMI 1** or **HDMI 2** mode.
- Not available when **PIP/PBP Mode** is set to **On**.

### 3.8.1 Configuring the HDMI Black Level Settings

- 1 When the Function Key Guide appears, select [  ] by moving the JOG button UP. Next, press the JOG button.
- 2 Move to **Picture** controlling the JOG button UP/DOWN and press the JOG button.
- 3 Move to **HDMI Black Level** controlling the JOG button UP/DOWN and press the JOG button. The following screen will appear.



- **Normal**: Select this mode when there is no contrast ratio degradation.
  - **Low**: Select this mode to reduce the black level and increase the white level when there is a contrast ratio degradation.
- 4 Move to the desired option controlling the JOG button UP/DOWN and press the JOG button.
  - 5 The selected option will be applied.



- **HDMI Black Level** may not be compatible with some source devices.


## 3.9 Response Time

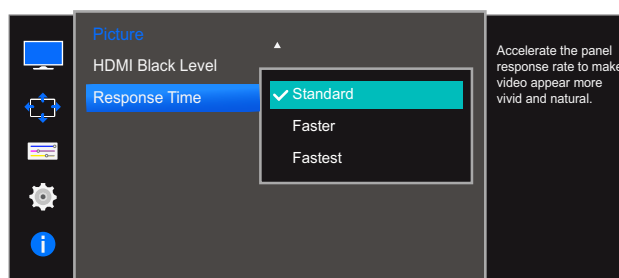
Accelerate the panel response rate to make video appear more vivid and natural.



- It is best to set **Response Time** to **Standard** or **Faster** when you are not viewing a movie.
- Not available when **PIP/PBP Mode** is set to **On**.

### 3.9.1 Configuring the Response Time

- 1 When the Function Key Guide appears, select [  ] by moving the JOG button UP. Next, press the JOG button.
- 2 Move to **Picture** controlling the JOG button UP/DOWN and press the JOG button.
- 3 Move to **Response Time** controlling the JOG button UP/DOWN and press the JOG button. The following screen will appear.



- 4 Move to the desired option controlling the JOG button UP/DOWN and press the JOG button.
- 5 The selected option will be applied.


## 4.1 Image Size

Change the picture size.

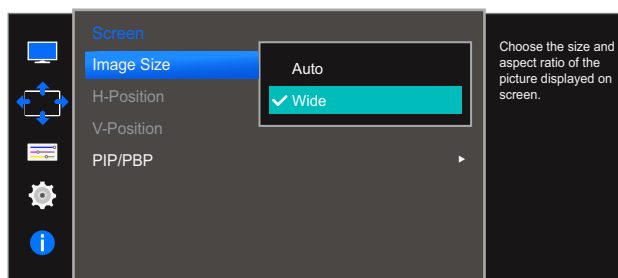


This menu is not available when **PIP/PBP Mode** is set to **On** and the **Size** is set to  (PBP Mode).

### 4.1.1 Changing the Image Size

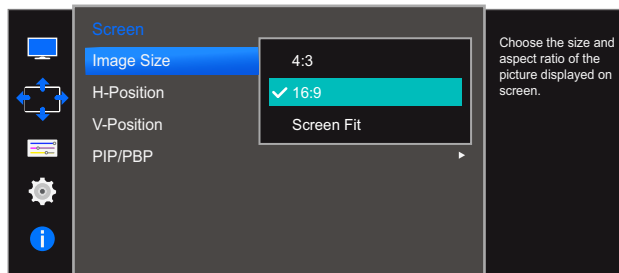
- 1 When the Function Key Guide appears, select  by moving the JOG button UP. Next, press the JOG button.
- 2 Move to **Screen** controlling the JOG button UP/DOWN and press the JOG button.
- 3 Move to **Image Size** controlling the JOG button UP/DOWN and press the JOG button. The following screen will appear.

In **PC** mode



- **Auto**: Display the picture according to the aspect ratio of the input source.
- **Wide**: Display the picture in full screen regardless of the aspect ratio of the input source.

In **AV** mode



- **4:3**: Display the picture with an aspect ratio of 4:3. Suitable for videos and standard broadcasts.
- **16:9**: Display the picture with an aspect ratio of 16:9.
- **Screen Fit**: Display the picture of the sub-screen with the original aspect ratio without cutting off.



- The function may not be supported depending on the ports provided with the product.
- Changing the screen size is available when the following conditions are satisfied.
  - A digital output device is connected using the HDMI/DP cable.
  - The input signal is 480p, 576p, 720p, or 1080p and monitor can display normally (Not every model can support all of these signals.).
  - This can only be set when the external input is connected through HDMI/DP and **PC/AV Mode** is set to **AV**.

- 4 Move to the desired option controlling the JOG button UP/DOWN and press the JOG button.
- 5 The selected option will be applied.



## 4.2 H-Position & V-Position

**H-Position:** Move the screen to the left or right.

**V-Position:** Move the screen up or down.

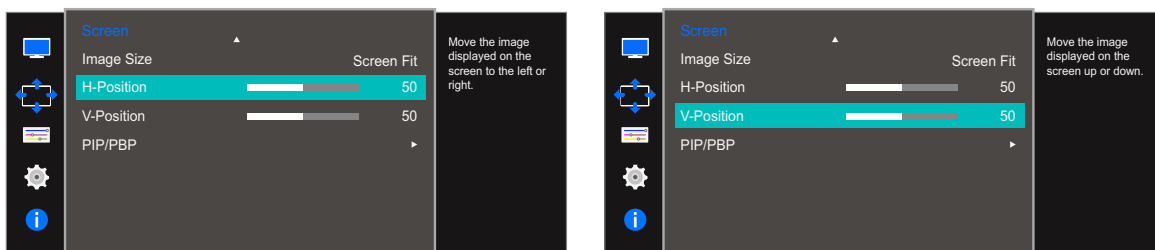


This menu is only available when **Image Size** is set to **Screen Fit** in **AV** Mode. When a 480P or 576P or 720P or 1080P signal is input in **AV** mode and the monitor can display normally, select **Screen Fit** to adjust horizontal position in 0-6 levels.

### 4.2.1 Configuring H-Position & V-Position

- 1 When the Function Key Guide appears, select [ ] by moving the JOG button UP. Next, press the JOG button.
- 2 Move to **Screen** controlling the JOG button UP/DOWN and press the JOG button.
- 3 Move to the **H-Position** or **V-Position** controlling the JOG button UP/DOWN and press the JOG button.

The following screen will appear.



- 4 Adjust the **H-Position** or **V-Position** controlling the JOG button LEFT/RIGHT and press the JOG button.
- 5 The selected option will be applied.

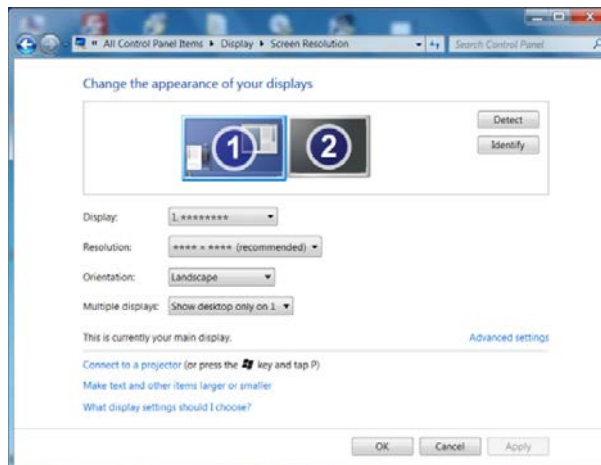
### 4.3 PIP/PBP

The PIP (Picture in Picture) function separates the screen into two parts. One source device is displayed on the main screen at the same time the another source device is displayed in inset windows.

The PBP (Picture by Picture) function separates the screen in half displaying output from two different source devices simultaneously on the left and right sides of the screen.



- Compatible with Windows7 and Windows8.
- The **PIP/PBP** function may not be available depending on the specifications of the graphics card used. If the screen is blank in **PIP/PBP** mode when the optimum resolution is selected, go to **Control Panel** → **Display** → **Screen Resolution** and click **Detect** on the PC. (Instructions are based on Windows 7.) If the screen is blank when the resolution is set to the optimum resolution, change the resolution to 1280 x 1024.

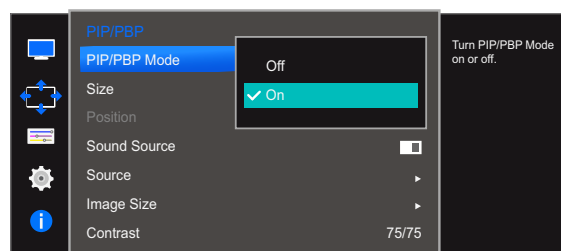
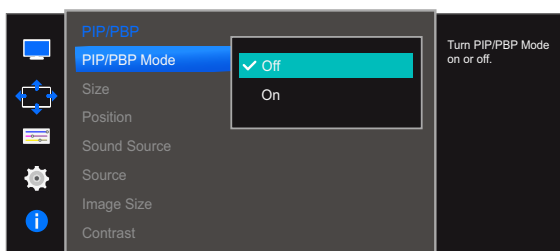
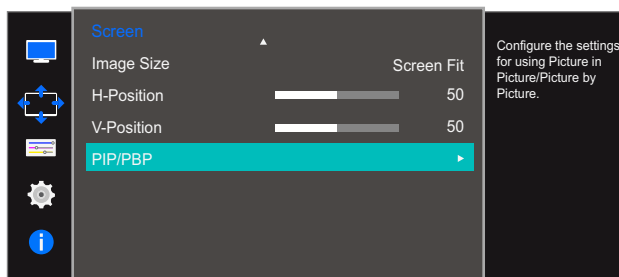


- To maximize the picture quality, it is recommended to use a graphics card that supports 4K (3840 x 2160) resolution.
- Due to system suitability problem for graphics card and Windows when **PIP/PBP** function is used, optimal resolution cannot be changed automatically. Set **PIP/PBP Mode** to **Off** or manually change the resolution to the optimum resolution using the Windows interface.

### 4.3.1 Configuring PIP/PBP Mode

Enable or disable the **PIP/PBP** function.

- 1 When the Function Key Guide appears, select [PIP/PBP] by moving the JOG button UP. Next, press the JOG button.
- 2 Move to **Screen** controlling the JOG button UP/DOWN and press the JOG button.
- 3 Move to the **PIP/PBP** controlling the JOG button UP/DOWN and press the JOG button. The following screen will appear.
- 4 Move to the **PIP/PBP Mode** controlling the JOG button UP/DOWN and press the JOG button. The following screen will appear.



- **Off / On**

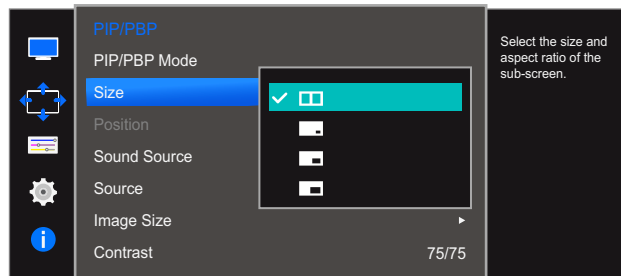
- 5 Move to the desired option controlling the JOG button UP/DOWN and press the JOG button.
- 6 The selected option will be applied.

### 4.3.2 Configuring Size

Select the size and aspect ratio of the sub-screen.

- 1 When the Function Key Guide appears, select [PIP] by moving the JOG button UP. Next, press the JOG button.
- 2 Move to **Screen** controlling the JOG button UP/DOWN and press the JOG button.
- 3 Move to the **PIP/PBP** controlling the JOG button UP/DOWN and press the JOG button.
- 4 Move to the **Size** controlling the JOG button UP/DOWN and press the JOG button.

The following screen will appear.



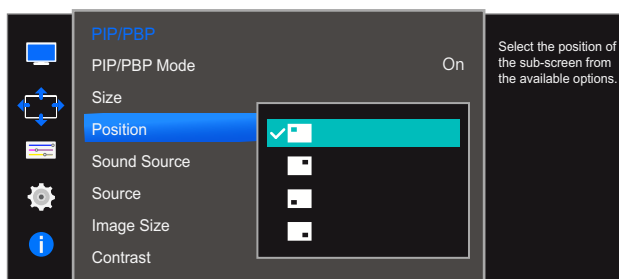
- : Select the icon image if you want to use PBP mode where the optimum resolution for the left and right sides of the screen is 1920 x 2160 (width x height).
  - : Select the icon image if you want to use PIP mode where the optimum resolution for the sub-screen is 720x480 (width x height).
  - : Select the icon image if you want to use PIP mode where the optimum resolution of the sub-screen is 1280x720 (width x height).
  - : Select the icon image if you want to use PIP mode where the optimum resolution of the sub-screen is 1920x1080 (width x height).
- 5 Move to the desired option controlling the JOG button UP/DOWN and press the JOG button.
  - 6 The selected option will be applied.

### 4.3.3 Configuring Position

Select the position of the sub-screen from the available options.

- 1 When the Function Key Guide appears, select [PIP] by moving the JOG button UP. Next, press the JOG button.
- 2 Move to **Screen** controlling the JOG button UP/DOWN and press the JOG button.
- 3 Move to the **PIP/PBP** controlling the JOG button UP/DOWN and press the JOG button.
- 4 Move to the **Position** controlling the JOG button UP/DOWN and press the JOG button.

The following screen will appear.



- / / /

- 5 Move to the desired option controlling the JOG button UP/DOWN and press the JOG button.
- 6 The selected option will be applied.



- Not available when PBP is selected.
- The screen may flicker if the input signal is unstable.

#### 4.3.4 Configuring Sound Source

Set which screen you want to hear the sound for.

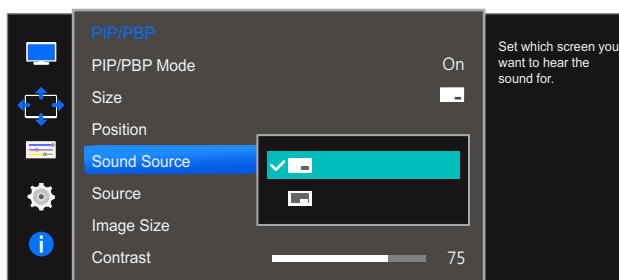
- 1 When the Function Key Guide appears, select [PIP] by moving the JOG button UP.  
Next, press the JOG button.
- 2 Move to **Screen** controlling the JOG button UP/DOWN and press the JOG button.
- 3 Move to the **PIP/PBP** controlling the JOG button UP/DOWN and press the JOG button.
- 4 Move to the **Sound Source** controlling the JOG button UP/DOWN and press the JOG button.

The following screen will appear.

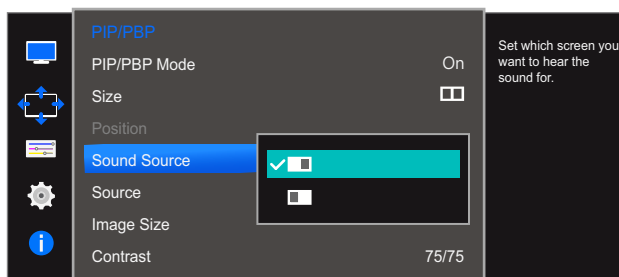


The white area of the icon means that the **Sound Source** comes from the main screen/sub-screen or the left/right screen.

##### PIP



##### PBP



- 5 Move to the desired option controlling the JOG button UP/DOWN and press the JOG button.
- 6 The selected option will be applied.

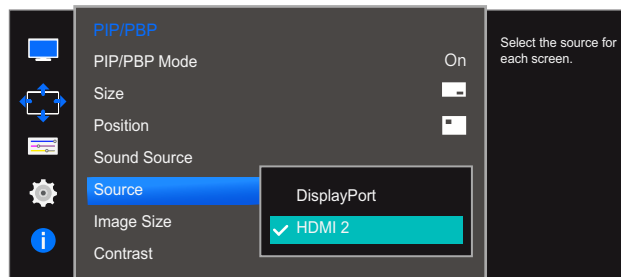
### 4.3.5 Configuring Source


Select the source for each screen.

#### PIP

- 1 When the Function Key Guide appears, select [PIP] by moving the JOG button UP. Next, press the JOG button.
- 2 Move to **Screen** controlling the JOG button UP/DOWN and press the JOG button.
- 3 Move to the **PIP/PBP** controlling the JOG button UP/DOWN and press the JOG button.
- 4 In PIP mode (**Size** [ ]/[ ]/[ ]), move the JOG button UP/DOWN to select **Source** and then press the JOG button.

The following screen will appear.

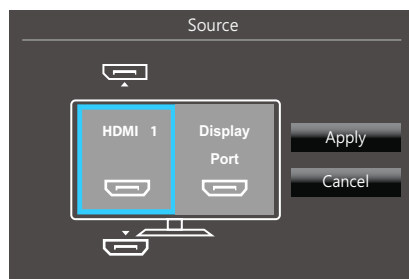
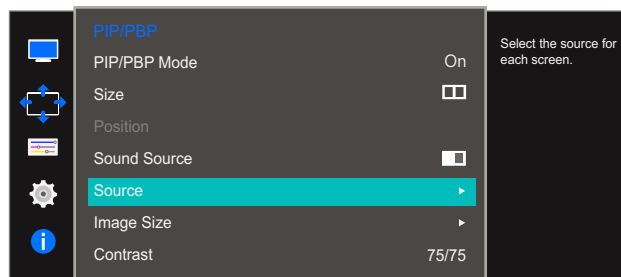



- **HDMI 1**
  - **HDMI 2**
  - **DisplayPort**
- 5 Move to the desired option controlling the JOG button UP/DOWN and press the JOG button.
  - 6 The selected option will be applied.
-  • The input source for the main screen changes.
- With the exception of the current input source, the other two input sources can be selected.
  - The screen may flicker if the input signal is unstable.
  - When the Function Key Guide appears, move the JOG button LEFT to select the [ ] icon and then press the JOG button. The main screen will switch in the order **DisplayPort** → **HDMI 1** → **HDMI 2**.

## PBP

- 1 When the Function Key Guide appears, select [ ] by moving the JOG button UP. Next, press the JOG button.
- 2 Move to **Screen** controlling the JOG button UP/DOWN and press the JOG button.
- 3 Move to the **PIP/PBP** controlling the JOG button UP/DOWN and press the JOG button.
- 4 In PBP mode (**Size** [ ]), move the JOG button UP/DOWN to select **Source** and then press the JOG button.

The following screen will appear.



- **HDMI 1**
  - **HDMI 2**
  - **DisplayPort**
- 5 Control the JOG button UP/DOWN and choose the left/right external input source.
  - 6 Move the JOG button LEFT/RIGHT to select **Apply** and then press the JOG button. Pressing the JOG button after selecting **Cancel** will cancel **Source** configuration and revert back to the **PIP/PBP** control menu.
-  The input source for the main screen changes.
- The screen may flicker if the input signal is unstable.
  - When the input signal of the left and right screens are the same, the operation cannot be performed.
  - When the Function Key Guide appears, move the JOG button LEFT to select the [ ] icon and then press the JOG button. The same PBP source setting menu appears.



### 4.3.6 Configuring Image Size

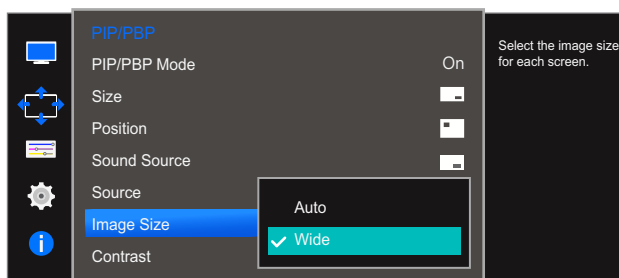
Select the image size for sub-screen.

#### PIP

- 1 When the Function Key Guide appears, select [PIP] by moving the JOG button UP. Next, press the JOG button.
- 2 Move to **Screen** controlling the JOG button UP/DOWN and press the JOG button.
- 3 Move to the **PIP/PBP** controlling the JOG button UP/DOWN and press the JOG button.
- 4 In PIP mode (**Size** [□]/[□]/[□]), move the JOG button UP/DOWN to select **Image Size** and then press the JOG button.

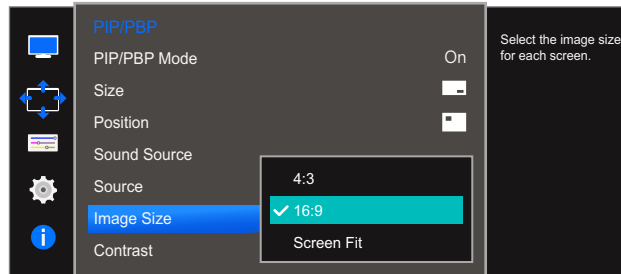
The following screen will appear.

In **PC** mode



- **Auto**: Display the picture according to the aspect ratio of the each screen input source.
- **Wide**: Display the picture in full screen regardless of the aspect ratio of the each screen input source.

In **AV** mode



- **4:3**: Display the picture of the sub-screen with an aspect ratio of 4:3. Suitable for videos and standard broadcasts.
- **16:9**: Display the picture of the sub-screen with an aspect ratio of 16:9.
- **Screen Fit**: Display the picture of the sub-screen with the original aspect ratio without cutting anything off.



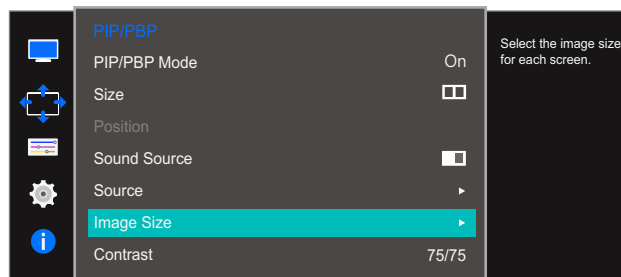
- The function may not be supported depending on the ports provided with the product.
- Changing the screen size is available when the following conditions are satisfied.
  - A digital output device is connected using the HDMI/DP cable.
  - The input signal is 480p, 576p, 720p, or 1080p and monitor can display normally (Not every model can support all of these signals.).
  - This can only be set when the external input is connected through HDMI/DP and **PC/AV Mode** is set to **AV**.

- 5 Move to the desired option controlling the JOG button UP/DOWN and press the JOG button.
- 6 The selected option will be applied.

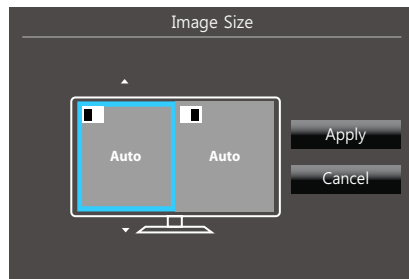
## PBP

- 1 When the Function Key Guide appears, select [PIP] by moving the JOG button UP. Next, press the JOG button.
- 2 Move to **Screen** controlling the JOG button UP/DOWN and press the JOG button.
- 3 Move to the **PIP/PBP** controlling the JOG button UP/DOWN and press the JOG button.
- 4 In PBP mode (**Size** [■]), move the JOG button UP/DOWN to select **Image Size** and then press the JOG button.

The following screen will appear.

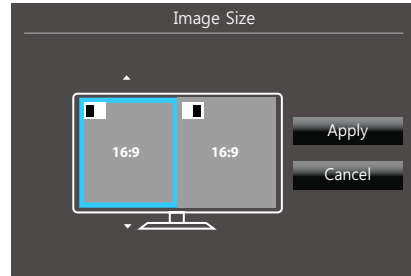


In **PC** mode



- **Auto**: Display the picture according to the aspect ratio of the each screen input source.
- **Wide**: Display the picture in full screen regardless of the aspect ratio of the each screen input source.

In **AV** mode



- **4:3**: Display the picture of the sub-screen with an aspect ratio of 4:3. Suitable for videos and standard broadcasts.
- **16:9**: Display the picture of the sub-screen with an aspect ratio of 16:9.
- **Screen Fit**: Display the picture of the sub-screen with the original aspect ratio without cutting anything off.



- The function may not be supported depending on the ports provided with the product.
- Changing the screen size is available when the following conditions are satisfied.
  - A digital output device is connected using the HDMI/DP cable.
  - The input signal is 480p, 576p, 720p, or 1080p and monitor can display normally (Not every model can support all of these signals.).
  - This can only be set when the external input is connected through HDMI/DP and **PC/AV Mode** is set to **AV**.

**5** Move to the desired option controlling the JOG button and press the JOG button.

**6** The selected option will be applied.

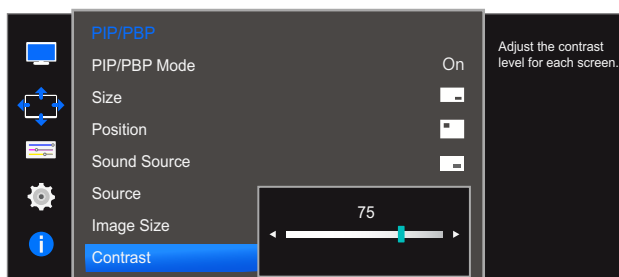
### 4.3.7 Configuring Contrast

#### PIP

Adjust the contrast level for sub-screen.

- 1 When the Function Key Guide appears, select [PIP] by moving the JOG button UP. Next, press the JOG button.
- 2 Move to **Screen** controlling the JOG button UP/DOWN and press the JOG button.
- 3 Move to the **PIP/PBP** controlling the JOG button UP/DOWN and press the JOG button.
- 4 In PIP mode (**Size** [□]/[□]/[□]), move the JOG button UP/DOWN to select **Contrast** and then press the JOG button.

The following screen will appear.



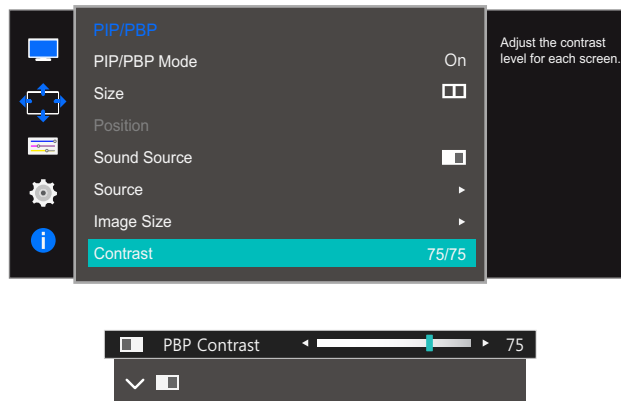
- 5 Adjust the **Contrast** controlling the JOG button LEFT/RIGHT.
- 6 The selected option will be applied.

**PBP**

Adjust the contrast level for each screen.

- 1 When the Function Key Guide appears, select [PIP] by moving the JOG button UP. Next, press the JOG button.
- 2 Move to **Screen** controlling the JOG button UP/DOWN and press the JOG button.
- 3 Move to the **PIP/PBP** controlling the JOG button UP/DOWN and press the JOG button.
- 4 In PBP mode (**Size** [■]), move the JOG button UP/DOWN to select **Contrast** and then press the JOG button.

The following screen will appear.



- 5 Adjust the **Contrast** controlling the JOG button LEFT/RIGHT.
- 6 The selected option will be applied.

A detailed description of each function is provided. Refer to your product for details.


## 5.1 Language

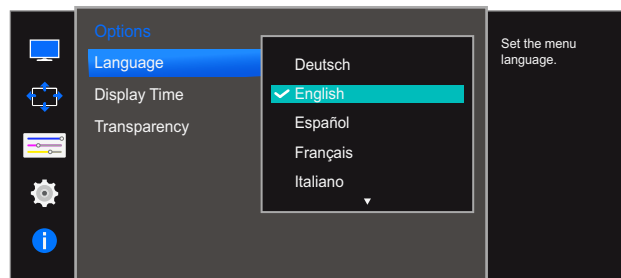
Set the menu language.



- A change to the language setting will only be applied to the onscreen menu display.
- It will not be applied to other functions on your PC.

### 5.1.1 Configuring Language

- 1 When the Function Key Guide appears, select [  ] by moving the JOG button UP. Next, press the JOG button.
- 2 Move to **Options** controlling the JOG button UP/DOWN and press the JOG button.
- 3 Move to **Language** controlling the JOG button UP/DOWN and press the JOG button. The following screen will appear.




- 4 Move to the desired option controlling the JOG button UP/DOWN and press the JOG button.
- 5 The selected option will be applied.

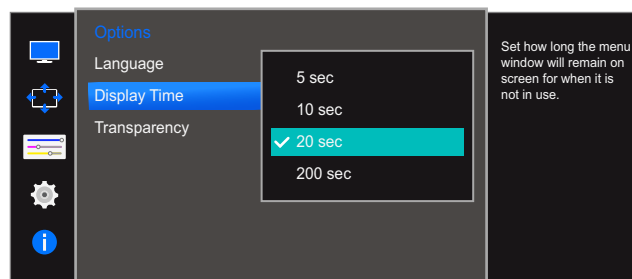
## 5.2 Display Time

Set the on-screen display (OSD) menu to automatically disappear if the menu is not used for a specified period of time.

**Display Time** can be used to specify the time after which you want the OSD menu to disappear.

### 5.2.1 Configuring Display Time

- 1 When the Function Key Guide appears, select [  ] by moving the JOG button UP. Next, press the JOG button.
- 2 Move to **Options** controlling the JOG button UP/DOWN and press the JOG button.
- 3 Move to **Display Time** controlling the JOG button UP/DOWN and press the JOG button.  
The following screen will appear.



- 4 Move to the desired option controlling the JOG button UP/DOWN and press the JOG button.
- 5 The selected option will be applied.

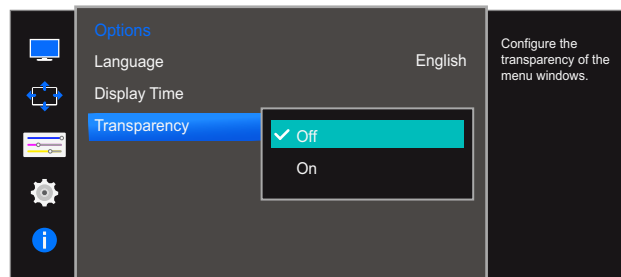


## 5.3 Transparency

Set the transparency for the menu windows.

### 5.3.1 Changing Transparency

- 1 When the Function Key Guide appears, select [F10] by moving the JOG button UP. Next, press the JOG button.
- 2 Move to **Options** controlling the JOG button UP/DOWN and press the JOG button.
- 3 Move to **Transparency** controlling the JOG button UP/DOWN and press the JOG button. The following screen will appear.



- 4 Move to the desired option controlling the JOG button UP/DOWN and press the JOG button.
- 5 The selected option will be applied.

## Setup and Reset

A detailed description of each function is provided. Refer to your product for details.

### 6.1 Eco Saving

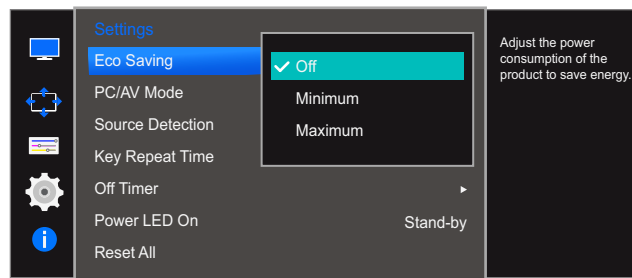
The **Eco Saving** function reduces power consumption by controlling the electric current used by the monitor panel.



- This menu is not available when **SAMSUNG MAGICBright** is in **Dynamic Contrast** mode.
- This menu is not available when **Game Mode** is enabled.

#### 6.1.1 Configuring Eco Saving

- 1 When the Function Key Guide appears, select [ ] by moving the JOG button UP. Next, press the JOG button.
- 2 Move to **Settings** controlling the JOG button UP/DOWN and press the JOG button.
- 3 Move to **Eco Saving** controlling the JOG button UP/DOWN and press the JOG button. The following screen will appear.



- **Off**: Deactivate the **Eco Saving** function.
  - **Minimum**: Change the monitor power consumption to 50% of the default level.
  - **Maximum**: Change the monitor power consumption to 75% of the default level.
- 4 Move to the desired option controlling the JOG button UP/DOWN and press the JOG button.
  - 5 The selected option will be applied.

## 6.2 PC/AV Mode

Set **PC/AV Mode** to **AV**. The picture size will be enlarged. This option is useful when you view a movie.

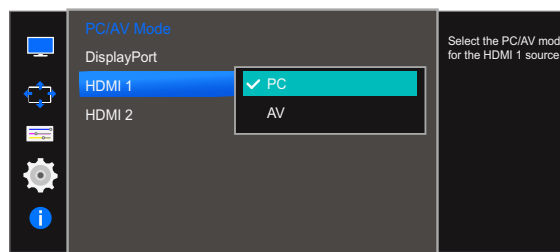
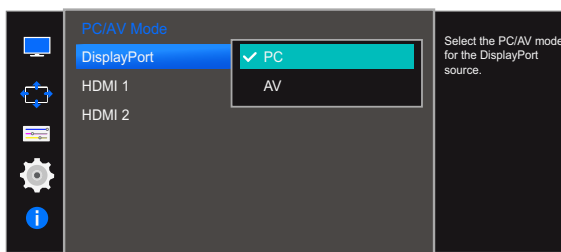
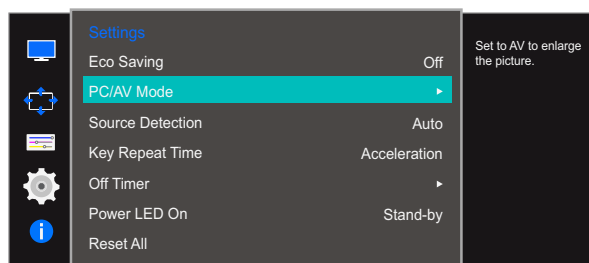


- This function does not support **Analog** mode.
- Supplied for the wide models only such as 16:9 or 16:10.
- If the monitor (when set to **HDMI 1**, **HDMI 2** or **DisplayPort**) is in power saving mode or is displaying the message **Check Signal Cable**, press the **MENU** button to display the On Screen Display(OSD). You can select **PC** or **AV**.

### 6.2.1 Configuring PC/AV Mode

- 1 When the Function Key Guide appears, select [ ] by moving the JOG button UP.  
Next, press the JOG button.
- 2 Move to **Settings** controlling the JOG button UP/DOWN and press the JOG button.
- 3 Move to **PC/AV Mode** controlling the JOG button UP/DOWN and press the JOG button.
- 4 Move to the **HDMI 1**, **HDMI 2** or **DisplayPort** controlling the JOG button UP/DOWN and press the JOG button.

The following screen will appear.



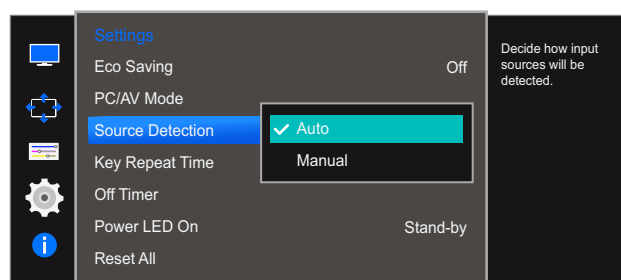
- 5 Move to the desired option controlling the JOG button UP/DOWN and press the JOG button.
- 6 The selected option will be applied.

## 6.3 Source Detection

You can activate **Source Detection**.

### 6.3.1 Configuring Source Detection

- 1 When the Function Key Guide appears, select [ ] by moving the JOG button UP. Next, press the JOG button.
- 2 Move to **Settings** controlling the JOG button UP/DOWN and press the JOG button.
- 3 Move to **Source Detection** controlling the JOG button UP/DOWN and press the JOG button. The following screen will appear.



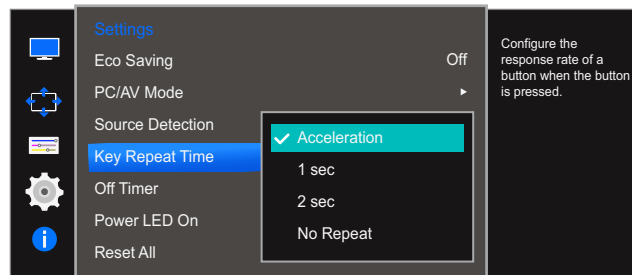
- **Auto**: The input source is automatically recognized.
  - **Manual**: Manually select an input source.
- 4 Move to the desired option controlling the JOG button UP/DOWN and press the JOG button.
  - 5 The selected option will be applied.

## 6.4 Key Repeat Time

Control the response rate of a button when the button is pressed.

### 6.4.1 Configuring Key Repeat Time

- 1 When the Function Key Guide appears, select [ ] by moving the JOG button UP. Next, press the JOG button.
- 2 Move to **Settings** controlling the JOG button UP/DOWN and press the JOG button.
- 3 Move to **Key Repeat Time** controlling the JOG button UP/DOWN and press the JOG button. The following screen will appear.




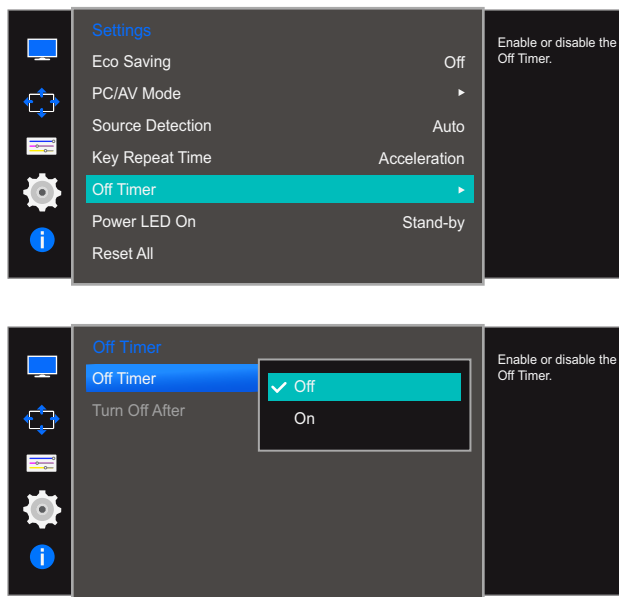
- **Acceleration**, **1 sec**, or **2 sec** can be selected. If **No Repeat** is selected, a command responds only once when a button is pressed.
- 4 Move to the desired option controlling the JOG button UP/DOWN and press the JOG button.
  - 5 The selected option will be applied.

## 6.5 Off Timer

You can set the product to automatically turn off.

### 6.5.1 Configuring Off Timer

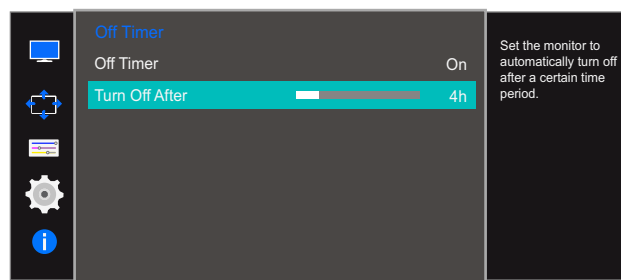
- 1 When the Function Key Guide appears, select [  ] by moving the JOG button UP. Next, press the JOG button.
- 2 Move to **Settings** controlling the JOG button UP/DOWN and press the JOG button.
- 3 Move to **Off Timer** controlling the JOG button UP/DOWN and press the JOG button.
- 4 Move to **Off Timer** controlling the JOG button UP/DOWN and press the JOG button. The following screen will appear.



- **Off:** Deactivate the off timer so that the product does not power off automatically.
  - **On:** Activate the off timer so that the product powers off automatically.
- 5 Move to the desired option controlling the JOG button UP/DOWN and press the JOG button.
  - 6 The selected option will be applied.

### 6.5.2 Configuring Turn Off After

- 1 When the Function Key Guide appears, select [F10] by moving the JOG button UP. Next, press the JOG button.
- 2 Move to **Settings** controlling the JOG button UP/DOWN and press the JOG button.
- 3 Move to **Off Timer** controlling the JOG button UP/DOWN and press the JOG button.
- 4 Move to **Turn Off After** controlling the JOG button UP/DOWN and press the JOG button. The following screen will appear.



- 5 Adjust the **Turn Off After** controlling the JOG button LEFT/RIGHT.
- 6 The selected option will be applied.




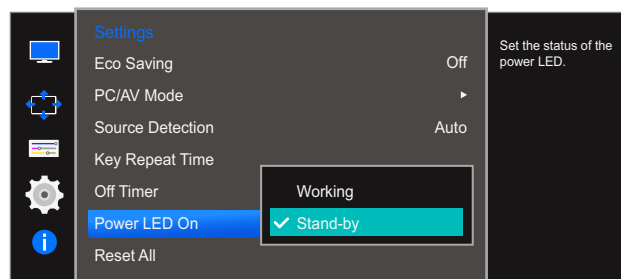
- The off timer can be set within a range of 1 to 23 hours. The product will automatically power off after the specified number of hours.
- This option is only available when **Off Timer** is set to **On**.

## 6.6 Power LED On

Configure the settings to enable or disable the power LED located at the lower part of the product.

### 6.6.1 Configuring Power LED On

- 1 When the Function Key Guide appears, select [  ] by moving the JOG button UP. Next, press the JOG button.
- 2 Move to **Settings** controlling the JOG button UP/DOWN and press the JOG button.
- 3 Move to **Power LED On** controlling the JOG button UP/DOWN and press the JOG button. The following screen will appear.



- **Working:** The power LED is on when the product is turned on.
  - **Stand-by:** The power LED is on when the product is turned off.
- 4 Move to the desired option controlling the JOG button UP/DOWN and press the JOG button.
  - 5 The selected option will be applied.

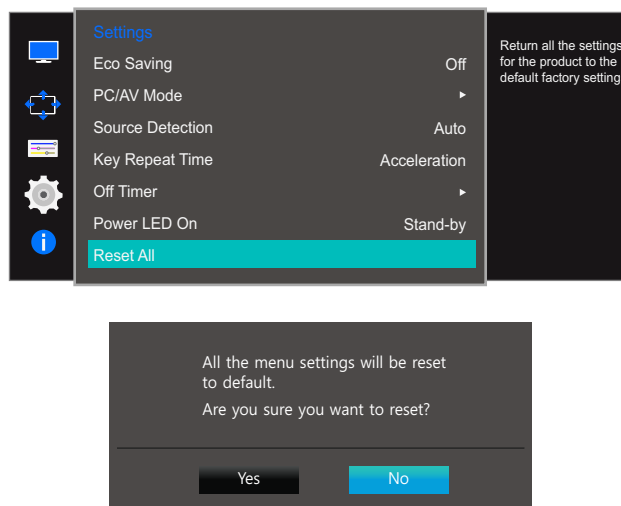


## 6.7 Reset All

Return all the settings for the product to the default factory settings.

### 6.7.1 Initializing Settings (Reset All)

- 1 When the Function Key Guide appears, select [F10] by moving the JOG button UP. Next, press the JOG button.
- 2 Move to **Settings** controlling the JOG button UP/DOWN and press the JOG button.
- 3 Move to **Reset All** controlling the JOG button UP/DOWN and press the JOG button. The following screen will appear.



- 4 Move to the desired option controlling the JOG button LEFT/RIGHT and press the JOG button.
- 5 The selected option will be applied.


# Information Menu and Others

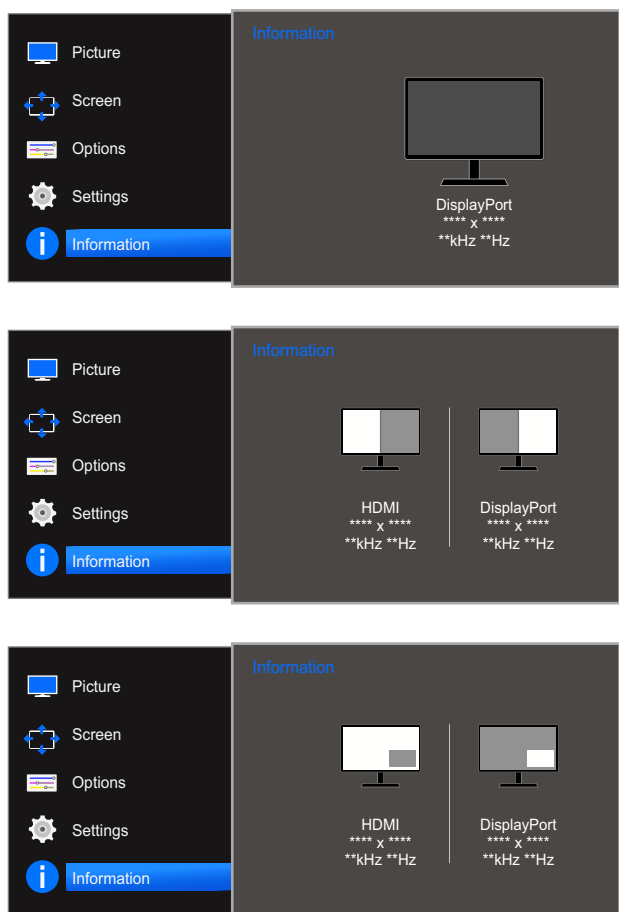
A detailed description of each function is provided. Refer to your product for details.

## 7.1 Information

View the current input source, frequency and resolution.

### 7.1.1 Displaying Information

- 1 When the Function Key Guide appears, select [  ] by moving the JOG button UP. Next, press the JOG button.
- 2 Move to **Information** controlling the JOG button UP/DOWN and press the JOG button. The following screen will appear.



## 7.2 Configuring Brightness, Contrast and Sharpness from the Initial Screen

When the shortcut button page is displayed, adjust the **Brightness**, **Contrast** and **Sharpness** settings from the initial screen using the JOG button.




### Brightness

- This menu is not available when **SAMSUNG MAGICBright** is set to **Dynamic Contrast** mode.
- This menu is not available when **Eco Saving** is enabled.



### Contrast

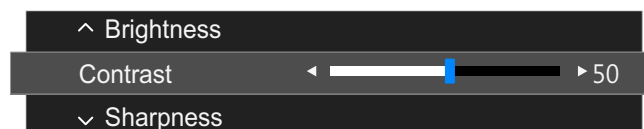
- This menu is not available when **SAMSUNG MAGICBright** is set to **Dynamic Contrast** mode.
- This menu is not available when **Game Mode** is enabled.
- This menu is not available when **PIP/PBP Mode** is set to **On** and the **Size** is set to  (PBP Mode).



### Sharpness

- This menu is not available when **SAMSUNG MAGICBright** is set to **Dynamic Contrast** mode.
- This menu is not available when **Game Mode** is enabled.
- Not available when **PIP/PBP Mode** is set to **On**.

- 1 When you control the JOG button LEFT/RIGHT, the following screen will appear.  
The following screen will appear.



- 2 Move the JOG button UP/DOWN to select **Brightness**, **Contrast** or **Sharpness**.
- 3 Move the JOG button LEFT/RIGHT to adjust the **Brightness**, **Contrast** or **Sharpness** setting.

## 7.3 Configuring Volume in the Initial Screen

### 7.3.1 Volume

Adjust the **Volume** by moving the JOG button when the Direct Key Guide is displayed on the screen.

- 1 When you control the JOG button LEFT/RIGHT, the following screen will appear.



- 2 Adjust the **Volume** controlling the JOG button LEFT/RIGHT.



If the audio quality of a connected input device is poor, the Auto Mute function on the product may mute the sound or cause choppy audio when applying the headphones or speakers.

Set the input volume for the input device to at least 20% and control the volume using the volume control (JOG button LEFT/RIGHT) on the product.

- What is Auto Mute?

The function mutes the audio to improve sound effect when there is sound noise or when the input signal is weak, usually due to a problem with the volume of an input device.

## 8.1 Easy Setting Box



### Easy Setting Box

"Easy Setting Box" enables users to use the monitor by partitioning multiple sections.

#### 8.1.1 Installing the Software

1 Insert the installation CD into the CD-ROM drive.

2 Select the "Easy Setting Box" setup program.



If the pop-up screen for the software installation does not appear on the main screen, find and double-click the "Easy Setting Box" setup file on the CD-ROM.

3 When the Installation Wizard appears, click **Next**.

4 Follow the instructions given on the screen to proceed with installation.



- The software may not work properly if you do not restart the computer after the installation.
- The "Easy Setting Box" icon may not appear depending on the computer system and the product specifications.
- If the shortcut icon does not appear, press the F5 key.

#### Restrictions and Problems with the Installation ("Easy Setting Box")

The "Easy Setting Box" installation may be affected by the Graphics Card, Motherboard and the Networking Environment.

#### System Requirements

##### OS

- Windows XP 32Bit/64Bit
- Windows Vista 32Bit/64Bit
- Windows 7 32Bit/64Bit
- Windows 8 32Bit/64Bit

##### Hardware

- At least 32MB of memory
- At least 60MB of free space on the hard disk drive

## 8.1.2 Removing the Software

Click **Start**, select **Settings/Control Panel**, and then double-click **Add or Remove Programs**.

Select "Easy Setting Box" from the program list and click the **Add/Delete** button.

## 9.1 Requirements Before Contacting Samsung Customer Service Center

### 9.1.1 Testing the Product



Before calling Samsung Customer Service Center, test your product as follows. If the problem persists, contact Samsung Customer Service Center.

Check if your product is operating normally by using the product test function.

If the screen is turned off and the power indicator blinks even though the product is properly connected to a PC, perform a self-diagnosis test.

- 1 Power off both the PC and product.
- 2 Disconnect the cables from the product.
- 3 Power on the product.
- 4 If the message **Check Signal Cable** appears, the product is working normally.



If the screen remains blank, check the PC system, video controller and cable.

### 9.1.2 Checking the Resolution and Frequency

For a mode that exceeds the supported resolution (refer to "10.3 Standard Signal Mode Table"), the message **Not Optimum Mode** will appear for a short time.

### 9.1.3 Check the following.

#### Installation issue (PC mode)

Issues	Solutions
The screen keeps switching on and off.	Check the cable connection between the product and PC, and ensure the connectors are locked. (Refer to "2.2 Connecting and Using a PC")

## Screen issue

Issues	Solutions
The power LED is off. The screen will not switch on.	Check that the power cable is connected properly. (Refer to "2.2 Connecting and Using a PC")
The message <b>Check Signal Cable</b> appears.	Check that the cable is properly connected to the product. (Refer to "2.2 Connecting and Using a PC")
	Check that the device connected to the product is powered on.
<b>Not Optimum Mode</b> is displayed.	This message appears when the signal from the graphics card exceeds the maximum resolution or frequency for the product.
	Change the maximum resolution and frequency to suit the product performance, referring to Standard Signal Mode Table (page 86).
The images on the screen look distorted.	Check the cable connection to the product. (Refer to "2.2 Connecting and Using a PC")
The screen appears unstable and shaky.	Check that the resolution and frequency for the PC are within the range of resolution and frequency compatible with the product. Next, if required, change the settings, referring to Standard Signal Mode Table (page 86) in this manual and the <b>Information</b> menu on the product.
There are shadows or ghost images left on the screen.	
The screen is too bright. The screen is too dark.	Adjust <b>Brightness</b> (page 35) and <b>Contrast</b> (page 36).
Screen color is inconsistent.	Change the <b>Color</b> settings. (Refer to "3.7 Color")
The colors on the screen have a shadow and are distorted.	Change the <b>Color</b> settings. (Refer to "3.7 Color")
White does not really look white.	Change the <b>Color</b> settings. (Refer to "3.7 Color")
There is no image on the screen and the power LED blinks every 0.5 to 1 second.	The product is operating in power-saving mode.
	Press any key on the keyboard or move the mouse to return to normal operating mode.



## Sound issue

Issues	Solutions
There is no sound.	Check the connection of the audio cable or adjust the volume.
	Check the volume.
The volume is too low.	Adjust the volume.
	If the volume is still low after turning it up to the maximum level, adjust the volume on your PC sound card or software program.

## Source device issue

Issues	Solutions
A beeping sound is heard when my PC is booting.	If a beeping sound is heard when your PC is booting, have your PC serviced.



The LED lights on the frame of the product may be seen depending on the user's viewing angle. The light is harmless to people and has no bearing on product features and performance. The product is safe to use.

## 9.2 Q &amp; A

Question	Answer
How can I change the frequency?	<p>Set the frequency on your graphics card.</p> <ul style="list-style-type: none"> <li>• Windows XP: Go to <b>Control Panel</b> → <b>Appearance and Themes</b> → <b>Display</b> → <b>Settings</b> → <b>Advanced</b> → <b>Monitor</b>, and adjust <b>Refresh rate</b> under <b>Monitor settings</b>.</li> <li>• Windows ME/2000: Go to <b>Control Panel</b> → <b>Display</b> → <b>Settings</b> → <b>Advanced</b> → <b>Monitor</b>, and adjust <b>Refresh rate</b> under <b>Monitor settings</b>.</li> <li>• Windows Vista: Go to <b>Control Panel</b> → <b>Appearance and Personalization</b> → <b>Personalization</b> → <b>Display Settings</b> → <b>Advanced Settings</b> → <b>Monitor</b>, and adjust <b>Refresh rate</b> under <b>Monitor settings</b>.</li> <li>• Windows 7: Go to <b>Control Panel</b> → <b>Appearance and Personalization</b> → <b>Display</b> → <b>Screen Resolution</b> → <b>Advanced settings</b> → <b>Monitor</b>, and adjust <b>Refresh rate</b> under <b>Monitor settings</b>.</li> <li>• Windows 8: Go to <b>Settings</b> → <b>Control Panel</b> → <b>Appearance and Personalization</b> → <b>Display</b> → <b>Screen Resolution</b> → <b>Advanced settings</b> → <b>Monitor</b>, and adjust <b>Refresh rate</b> under <b>Monitor settings</b>.</li> </ul>

Question	Answer
How can I change the resolution?	<ul style="list-style-type: none"> <li>• Windows XP: Go to <b>Control Panel</b> → <b>Appearance and Themes</b> → <b>Display</b> → <b>Settings</b>, and adjust the resolution.</li> <li>• Windows ME/2000: Go to <b>Control Panel</b> → <b>Display</b> → <b>Settings</b>, and adjust the resolution.</li> <li>• Windows Vista: Go to <b>Control Panel</b> → <b>Appearance and Personalization</b> → <b>Personalize</b> → <b>Display Settings</b>, and adjust the resolution.</li> <li>• Windows 7: Go to <b>Control Panel</b> → <b>Appearance and Personalization</b> → <b>Display</b> → <b>Adjust Resolution</b>, and adjust the resolution.</li> <li>• Windows 8: Go to <b>Settings</b> → <b>Control Panel</b> → <b>Appearance and Personalization</b> → <b>Display</b> → <b>Adjust Resolution</b>, and adjust the resolution.</li> </ul>
How do I set power-saving mode?	<ul style="list-style-type: none"> <li>• Windows XP: Set power-saving mode in <b>Control Panel</b> → <b>Appearance and Themes</b> → <b>Display</b> → <b>Screen Saver Settings</b> or BIOS SETUP on the PC.</li> <li>• Windows ME/2000: Set power-saving mode in <b>Control Panel</b> → <b>Display</b> → <b>Screen Saver Settings</b> or BIOS SETUP on the PC.</li> <li>• Windows Vista: Set power-saving mode in <b>Control Panel</b> → <b>Appearance and Personalization</b> → <b>Personalize</b> → <b>Screen Saver Settings</b> or BIOS SETUP on the PC.</li> <li>• Windows 7: Set power-saving mode in <b>Control Panel</b> → <b>Appearance and Personalization</b> → <b>Personalize</b> → <b>Screen Saver Settings</b> or BIOS SETUP on the PC.</li> <li>• Windows 8: Set power-saving mode in <b>Settings</b> → <b>Control Panel</b> → <b>Appearance and Personalization</b> → <b>Personalize</b> → <b>Screen Saver Settings</b> or BIOS SETUP on the PC.</li> </ul>



Refer to the user manual for your PC or graphics card for further instructions on adjustment.



# Specifications

## 10.1 General

Model Name		U28D590D
Panel	Size	70.8 cm
	Display area	620.93 mm (H) x 341.28 mm (V)
	Pixel Pitch	0.16 mm (H) x 0.16 mm (V)
Power Supply		AC 100 - 240 V ~ (+/- 10 %), 50/60 Hz ± 3 Hz
Dimensions (W x H x D) / Weight	Without Stand	660.9 x 410.0 x 64.7 mm
	With Stand	660.9 x 486.3 x 169.4 mm / 5.65 kg
Environmental considerations	Operating	Temperature: 10°C ~ 40°C (50°F ~ 104°F) Humidity: 10 % – 80 %, non-condensing
	Storage	Temperature: -20°C ~ 45°C (-4°F ~ 113°F) Humidity: 5 % – 95 %, non-condensing



### Panel Dots (Pixels)

Due to the nature of the manufacturing of this product, approximately 1 pixel per million (1ppm) may be brighter or darker on the LCD panel. This does not affect product performance.



### Plug-and-Play

This monitor can be installed and used with any Plug-and-Play compatible systems. Two-way data exchange between the monitor and PC system optimizes the monitor settings. Monitor installation takes place automatically. However, you can customize the installation settings if desired.



The above specifications are subject to change without notice to improve quality.



This device is a Class B digital apparatus.

## 10.2 PowerSaver

The power-saving function of this product reduces power consumption by switching off the screen and changing the color of the power LED if the product is not used for a specified period of time. The power is not turned off in power-saving mode. To switch the screen back on, press any key on the keyboard or move the mouse. Power-saving mode functions only when the product is connected to a PC that has a power-saving function.

PowerSaver	Energy Star Power Consumption	Power saving mode	Power off (Power button)
Power Indicator	Off	Blinking	On
Power Consumption	32 watts	Typical 0.3 watts Max 0.45 watts	Less than 0.3 watts



- The power consumption level can vary in different operating conditions or when settings are changed.
- ENERGY STAR® is a US registered mark of the United States Environmental Protection Agency. Energy Star power is measured with the test method in the current Energy Star® Standard.
- To reduce the power consumption to 0 watts, turn off the power switch on the back of the product or disconnect the power cable. Be sure to disconnect the power cable when you will not be using the product for an extended period of time. To reduce the power consumption to 0 watts when the power switch is not available, disconnect the power cable.

## 10.3 Standard Signal Mode Table



- This product can be set to only one resolution for each screen size to obtain the optimum picture quality due to the nature of the panel. Therefore, a resolution other than the specified resolution may degrade the picture quality. To avoid this, it is recommended that you select the optimum resolution specified for the screen size of your product.
- Check the frequency when you exchange a CDT monitor (connected to a PC) for an LCD monitor. If the LCD monitor does not support 85Hz, change the vertical frequency to 60Hz using the CDT monitor before you exchange it with the LCD monitor.

Model Name		U28D590D
Synchronization	Horizontal Frequency	30 ~ 134 kHz (DisplayPort) 30 ~ 90 kHz (HDMI)
	Vertical Frequency	56 ~ 75 Hz (DisplayPort) 24 ~ 75 Hz (HDMI)
Resolution	Optimum Resolution	3840 x 2160 @ 60Hz (DisplayPort) 3840 x 2160 @ 30Hz (HDMI)
	Maximum Resolution	3840 x 2160 @ 60Hz (DisplayPort) 3840 x 2160 @ 30Hz (HDMI)

If a signal that belongs to the following standard signal modes is transmitted from your PC, the screen will automatically be adjusted. If the signal transmitted from the PC does not belong to the standard signal modes, the screen may be blank even though the power LED turns on. In such a case, change the settings according to the following table by referring to the graphics card user manual.



# Specifications

## Displayport

Resolution	Horizontal Frequency (kHz)	Vertical Frequency (Hz)	Pixel Clock (MHz)	Sync Polarity (H/V)
IBM, 720 x 400	31.469	70.087	28.322	-/+
VESA, 640 x 480	31.469	59.940	25.175	-/-
MAC, 640 x 480	35.000	66.667	30.240	-/-
VESA, 640 x 480	37.861	72.809	31.500	-/-
VESA, 640 x 480	37.500	75.000	31.500	-/-
VESA, 800 x 600	35.156	56.250	36.000	+/+
VESA, 800 x 600	37.879	60.317	40.000	+/+
VESA, 800 x 600	48.077	72.188	50.000	+/+
VESA, 800 x 600	46.875	75.000	49.500	+/+
MAC, 832 x 624	49.726	74.551	57.284	-/-
VESA, 1024 x 768	48.363	60.004	65.000	-/-
VESA, 1024 x 768	56.476	70.069	75.000	-/-
VESA, 1024 x 768	60.023	75.029	78.750	+/+
VESA, 1152 x 864	67.500	75.000	108.000	+/+
MAC, 1152 x 870	68.681	75.062	100.000	-/-
VESA, 1280 x 720	45.000	60.000	74.250	+/+
VESA, 1280 x 800	49.702	59.810	83.500	-/+
VESA, 1280 x 1024	63.981	60.020	108.000	+/+
VESA, 1280 x 1024	79.976	75.025	135.000	+/+
VESA, 1440 x 900	55.935	59.887	106.500	-/+
VESA, 1600 x 900RB	60.000	60.000	108.000	+/+
VESA, 1680 x 1050	65.290	59.954	146.250	-/+
VESA, 1920 x 1080	67.500	60.000	148.500	+/+
VESA, 1920 x 1200	74.556	59.885	193.250	-/+
VESA, 2560 x 1440RB	88.787	59.951	241.500	+/-
VESA, 3840 x 2160RB	133.313	59.997	533.250	+/-

## HDMI

Resolution	Horizontal Frequency (kHz)	Vertical Frequency (Hz)	Pixel Clock (MHz)	Sync Polarity (H/V)
IBM, 720 x 400	31.469	70.087	28.322	-/+
VESA, 640 x 480	31.469	59.940	25.175	-/-
MAC, 640 x 480	35.000	66.667	30.240	-/-
VESA, 640 x 480	37.861	72.809	31.500	-/-
VESA, 640 x 480	37.500	75.000	31.500	-/-
VESA, 800 x 600	35.156	56.250	36.000	+/+
VESA, 800 x 600	37.879	60.317	40.000	+/+
VESA, 800 x 600	48.077	72.188	50.000	+/+
VESA, 800 x 600	46.875	75.000	49.500	+/+
MAC, 832 x 624	49.726	74.551	57.284	-/-
VESA, 1024 x 768	48.363	60.004	65.000	-/-
VESA, 1024 x 768	56.476	70.069	75.000	-/-
VESA, 1024 x 768	60.023	75.029	78.750	+/+
VESA, 1152 x 864	67.500	75.000	108.000	+/+
MAC, 1152 x 870	68.681	75.062	100.000	-/-
VESA, 1280 x 720	45.000	60.000	74.250	+/+
VESA, 1280 x 800	49.702	59.810	83.500	-/+
VESA, 1280 x 1024	63.981	60.020	108.000	+/+
VESA, 1280 x 1024	79.976	75.025	135.000	+/+
VESA, 1440 x 900	55.935	59.887	106.500	-/+
VESA, 1600 x 900RB	60.000	60.000	108.000	+/+
VESA, 1680 x 1050	65.290	59.954	146.250	-/+
VESA, 1920 x 1080	67.500	60.000	148.500	+/+
VESA, 1920 x 1200	74.556	59.885	193.250	-/+
VESA, 2560 x 1440RB	88.787	59.951	241.500	+/-
CEA, 3840 x 2160	67.500	30.000	297.000	+/+



- Horizontal Frequency

The time required to scan a single line from the left to the right side of the screen is called a horizontal cycle. The reciprocal number of a horizontal cycle is called horizontal frequency. Horizontal frequency is measured in kHz.



- Vertical Frequency  
Repeating the same picture dozens of times per second allows you to view natural pictures. The repeat frequency is called "vertical frequency" or "refresh rate" and is indicated in Hz.
- Some resolutions listed in the table above may not be available depending on graphics card specifications.

## Contact SAMSUNG WORLD WIDE



If you have any questions or comments relating to Samsung products, please contact the SAMSUNG customer care center.

NORTH AMERICA		
U.S.A	1-800-SAMSUNG (726-7864)	<a href="http://www.samsung.com/us">http://www.samsung.com/us</a>
CANADA	1-800-SAMSUNG (726-7864)	<a href="http://www.samsung.com/ca">http://www.samsung.com/ca</a> (English) <a href="http://www.samsung.com/ca_fr">http://www.samsung.com/ca_fr</a> (French)
LATIN AMERICA		
ARGENTINE	0800 333 3733	<a href="http://www.samsung.com.ar">http://www.samsung.com.ar</a>
BOLIVIA	800-10-7260	<a href="http://www.samsung.com">http://www.samsung.com</a>
BRAZIL	0800-124-421 (Demais cidades e regiões) 4004-0000 (Capitais e grandes centros)	<a href="http://www.samsung.com.br">http://www.samsung.com.br</a>
CHILE	800-SAMSUNG (726-7864)	<a href="http://www.samsung.com/cl">http://www.samsung.com/cl</a>
COLOMBIA	01 8000 112 112 Bogotá 600 12 72	<a href="http://www.samsung.com/co">http://www.samsung.com/co</a>
COSTA RICA	0-800-507-7267	<a href="http://www.samsung.com/latin">http://www.samsung.com/latin</a> (Spanish) <a href="http://www.samsung.com/latin_en">http://www.samsung.com/latin_en</a> (English)
DOMINICA	1-800-751-2676	<a href="http://www.samsung.com/latin">http://www.samsung.com/latin</a> (Spanish) <a href="http://www.samsung.com/latin_en">http://www.samsung.com/latin_en</a> (English)
ECUADOR	1-800-10-7267	<a href="http://www.samsung.com/latin">http://www.samsung.com/latin</a> (Spanish) <a href="http://www.samsung.com/latin_en">http://www.samsung.com/latin_en</a> (English)
EL SALVADOR	800-6225	<a href="http://www.samsung.com/latin">http://www.samsung.com/latin</a> (Spanish) <a href="http://www.samsung.com/latin_en">http://www.samsung.com/latin_en</a> (English)

LATIN AMERICA		
GUATEMALA	1-800-299-0013	<a href="http://www.samsung.com/latin">http://www.samsung.com/latin</a> (Spanish) <a href="http://www.samsung.com/latin_en">http://www.samsung.com/latin_en</a> (English)
HONDURAS	800-27919267	<a href="http://www.samsung.com/latin">http://www.samsung.com/latin</a> (Spanish) <a href="http://www.samsung.com/latin_en">http://www.samsung.com/latin_en</a> (English)
JAMAICA	1-800-234-7267	<a href="http://www.samsung.com">http://www.samsung.com</a>
NICARAGUA	001-800-5077267	<a href="http://www.samsung.com/latin">http://www.samsung.com/latin</a> (Spanish) <a href="http://www.samsung.com/latin_en">http://www.samsung.com/latin_en</a> (English)
MEXICO	01-800-SAMSUNG (726-7864)	<a href="http://www.samsung.com">http://www.samsung.com</a>
PANAMA	800-7267	<a href="http://www.samsung.com/latin">http://www.samsung.com/latin</a> (Spanish) <a href="http://www.samsung.com/latin_en">http://www.samsung.com/latin_en</a> (English)
PARAGUAY	009 800 542 0001	<a href="http://www.samsung.com.py">http://www.samsung.com.py</a>
PERU	0-800-777-08	<a href="http://www.samsung.com/pe">http://www.samsung.com/pe</a>
PUERTO RICO	1-800-682-3180	<a href="http://www.samsung.com">http://www.samsung.com</a>
TRINIDAD & TOBAGO	1-800-SAMSUNG (726-7864)	<a href="http://www.samsung.com">http://www.samsung.com</a>
URUGUAY	000 405 437 33	<a href="http://www.samsung.com">http://www.samsung.com</a>
VENEZUELA	0-800-100-5303	<a href="http://www.samsung.com/ve">http://www.samsung.com/ve</a>

EUROPE		
AUSTRIA	0810 - SAMSUNG (7267864, € 0.07/min)	<a href="http://www.samsung.com">http://www.samsung.com</a>
BELGIUM	02-201-24-18	<a href="http://www.samsung.com/be">http://www.samsung.com/be</a> (Dutch) <a href="http://www.samsung.com/be_fr">http://www.samsung.com/be_fr</a> (French)
BOSNIA	051 331 999	<a href="http://www.samsung.com">http://www.samsung.com</a>
BULGARIA	07001 33 11, share cost tariff	<a href="http://www.samsung.com/bg">http://www.samsung.com/bg</a>
CROATIA	062 SAMSUNG (062 726 786)	<a href="http://www.samsung.com/hr">http://www.samsung.com/hr</a>
CYPRUS	8009 4000 only from landline	<a href="http://www.samsung.com/gr">http://www.samsung.com/gr</a>

EUROPE		
CZECH	800 - SAMSUNG (800-726786)	<a href="http://www.samsung.com">http://www.samsung.com</a>
	Samsung Electronics Czech and Slovak, s.r.o. V Parku 2343/24, 148 00 - Praha 4	
DENMARK	70 70 19 70	<a href="http://www.samsung.com">http://www.samsung.com</a>
EIRE	0818 717100	<a href="http://www.samsung.com">http://www.samsung.com</a>
ESTONIA	800-7267	<a href="http://www.samsung.com/ee">http://www.samsung.com/ee</a>
FINLAND	030-6227 515	<a href="http://www.samsung.com">http://www.samsung.com</a>
FRANCE	01 48 63 00 00	<a href="http://www.samsung.com/fr">http://www.samsung.com/fr</a>
GERMANY	0180 6 SAMSUNG bzw.	<a href="http://www.samsung.com">http://www.samsung.com</a>
	0180 6 7267864* (*0,20 €/Anruf aus dem dt. Festnetz, aus dem Mobilfunk max. 0,60 €/Anruf)	
GREECE	80111-SAMSUNG (80111 726 7864) only from land line (+30) 210 6897691 from mobile and land line	<a href="http://www.samsung.com/gr">http://www.samsung.com/gr</a>
HUNGARY	06-80-SAMSUNG (726-7864)	<a href="http://www.samsung.com/hu">http://www.samsung.com/hu</a>
ITALIA	800-SAMSUNG (726-7864)	<a href="http://www.samsung.com">http://www.samsung.com</a>
LATVIA	8000-7267	<a href="http://www.samsung.com/lv">http://www.samsung.com/lv</a>
LITHUANIA	8-800-77777	<a href="http://www.samsung.com/lt">http://www.samsung.com/lt</a>
LUXEMBURG	261 03 710	<a href="http://www.samsung.com">http://www.samsung.com</a>
MONTENEGRO	020 405 888	<a href="http://www.samsung.com">http://www.samsung.com</a>
NETHERLANDS	0900 - SAMSUNG (0900-7267864) (€ 0,10/Min)	<a href="http://www.samsung.com">http://www.samsung.com</a>
NORWAY	815 56480	<a href="http://www.samsung.com">http://www.samsung.com</a>
POLAND	0 801-172-678* lub +48 22 607-93-33 ** *(całkowity koszt połączenia jak za 1 impuls według taryfy operatora) ** (koszt połączenia według taryfy operatora)	<a href="http://www.samsung.com/pl">http://www.samsung.com/pl</a>
PORTUGAL	808 20 - SAMSUNG (808 20 7267)	<a href="http://www.samsung.com">http://www.samsung.com</a>
ROMANIA	08008 SAMSUNG (08008 726 7864) TOLL FREE No.	<a href="http://www.samsung.com/ro">http://www.samsung.com/ro</a>
SERBIA	011 321 6899	<a href="http://www.samsung.com/rs">http://www.samsung.com/rs</a>

# Appendix

EUROPE		
SLOVAKIA	0800 - SAMSUNG (0800-726 786)	<a href="http://www.samsung.com">http://www.samsung.com</a>
SPAIN	902172678	<a href="http://www.samsung.com">http://www.samsung.com</a>
SWEDEN	0771 726 7864 (SAMSUNG)	<a href="http://www.samsung.com">http://www.samsung.com</a>
SWITZERLAND	0848-SAMSUNG (7267864, CHF 0.08/min)	<a href="http://www.samsung.com/ch">http://www.samsung.com/ch</a> (German)  <a href="http://www.samsung.com/ch_fr">http://www.samsung.com/ch_fr</a> (French)
U.K	0330 SAMSUNG (7267864)	<a href="http://www.samsung.com">http://www.samsung.com</a>

CIS		
ARMENIA	0-800-05-555	<a href="http://www.samsung.com">http://www.samsung.com</a>
AZERBAIJAN	088-55-55-555	<a href="http://www.samsung.com">http://www.samsung.com</a>
BELARUS	810-800-500-55-500	<a href="http://www.samsung.com">http://www.samsung.com</a>
GEORGIA	0-800-555-555	<a href="http://www.samsung.com">http://www.samsung.com</a>
KAZAKHSTAN	8-10-800-500-55-500 (GSM: 7799)	<a href="http://www.samsung.com">http://www.samsung.com</a>
KYRGYZSTAN	00-800-500-55-500	<a href="http://www.samsung.com">http://www.samsung.com</a>
MOLDOVA	0-800-614-40	<a href="http://www.samsung.com">http://www.samsung.com</a>
MONGOLIA	+7-800-555-55-55	<a href="http://www.samsung.com">http://www.samsung.com</a>
RUSSIA	8-800-555-55-55	<a href="http://www.samsung.com">http://www.samsung.com</a>
TADJIKISTAN	8-10-800-500-55-500	<a href="http://www.samsung.com">http://www.samsung.com</a>
UKRAINE	0-800-502-000	<a href="http://www.samsung.com/ua">http://www.samsung.com/ua</a> (Ukrainian)  <a href="http://www.samsung.com/ua_ru">http://www.samsung.com/ua_ru</a> (Russian)
UZBEKISTAN	8-10-800-500-55-500	<a href="http://www.samsung.com">http://www.samsung.com</a>

ASIA PACIFIC		
AUSTRALIA	1300 362 603	<a href="http://www.samsung.com/au">http://www.samsung.com/au</a>
CHINA	400-810-5858	<a href="http://www.samsung.com">http://www.samsung.com</a>
HONG KONG	(852) 3698 4698	<a href="http://www.samsung.com/hk">http://www.samsung.com/hk</a> (Chinese)  <a href="http://www.samsung.com/hk_en">http://www.samsung.com/hk_en</a> (English)

## Appendix

ASIA PACIFIC		
INDIA	1800 3000 8282 1800 266 8282	<a href="http://www.samsung.com/in">http://www.samsung.com/in</a>
INDONESIA	0800-112-8888 (Toll Free) (021) 56997777	<a href="http://www.samsung.com/id">http://www.samsung.com/id</a>
JAPAN	0120-327-527	<a href="http://www.samsung.com">http://www.samsung.com</a>
MALAYSIA	1800-88-9999	<a href="http://www.samsung.com/my">http://www.samsung.com/my</a>
NEW ZEALAND	0800 SAMSUNG (0800 726 786)	<a href="http://www.samsung.com/nz">http://www.samsung.com/nz</a>
PHILIPPINES	1-800-10-7267864 [PLDT] 1-800-8-7267864 [Globe landline and Mobile] 02-4222111 [Other landline]	<a href="http://www.samsung.com/ph">http://www.samsung.com/ph</a>
SINGAPORE	1800-SAMSUNG (726-7864)	<a href="http://www.samsung.com/sg">http://www.samsung.com/sg</a>
TAIWAN	0800-32-9999	<a href="http://www.samsung.com/tw">http://www.samsung.com/tw</a>
THAILAND	0-2689-3232, 1800-29-3232	<a href="http://www.samsung.com/th">http://www.samsung.com/th</a>
VIETNAM	1800 588 889	<a href="http://www.samsung.com">http://www.samsung.com</a>

MENA		
ALGERIA	0800 100 100	<a href="http://www.samsung.com/n_africa">http://www.samsung.com/n_africa</a>
BAHRAIN	8000-4726	<a href="http://www.samsung.com/ae">http://www.samsung.com/ae</a> (English) <a href="http://www.samsung.com/ae_ar">http://www.samsung.com/ae_ar</a> (Arabic)
EGYPT	08000-726786	<a href="http://www.samsung.com">http://www.samsung.com</a>
IRAN	021-8255	<a href="http://www.samsung.com">http://www.samsung.com</a>
JORDAN	0800-22273 06 5777444	<a href="http://www.samsung.com/Levant">http://www.samsung.com/Levant</a> (English)
KUWAIT	183-2255 (183-CALL)	<a href="http://www.samsung.com/ae">http://www.samsung.com/ae</a> (English) <a href="http://www.samsung.com/ae_ar">http://www.samsung.com/ae_ar</a> (Arabic)
MOROCCO	080 100 2255	<a href="http://www.samsung.com">http://www.samsung.com</a>
OMAN	800-SAMSUNG (726-7864)	<a href="http://www.samsung.com/ae">http://www.samsung.com/ae</a> (English) <a href="http://www.samsung.com/ae_ar">http://www.samsung.com/ae_ar</a> (Arabic)

MENA		
PAKISTAN	0800-Samsung (72678)	<a href="http://www.samsung.com/pk/">http://www.samsung.com/pk/</a>
QATAR	800-2255 (800-CALL)	<a href="http://www.samsung.com/ae">http://www.samsung.com/ae</a> (English) <a href="http://www.samsung.com/ae_ar">http://www.samsung.com/ae_ar</a> (Arabic)
SAUDI ARABIA	920021230	<a href="http://www.samsung.com/sa">http://www.samsung.com/sa</a>
SYRIA	18252273	<a href="http://www.samsung.com/Levant">http://www.samsung.com/Levant</a> (English)
TUNISIA	80-1000-12	<a href="http://www.samsung.com/n_africa">http://www.samsung.com/n_africa</a>
TURKEY	444 77 11	<a href="http://www.samsung.com">http://www.samsung.com</a>
U.A.E	800-SAMSUNG (726-7864)	<a href="http://www.samsung.com">http://www.samsung.com</a>

AFRICA		
BOTSWANA	8007260000	<a href="http://www.samsung.com">http://www.samsung.com</a>
BURUNDI	200	<a href="http://www.samsung.com">http://www.samsung.com</a>
CAMEROON	7095-0077	<a href="http://www.samsung.com/africa_fr">http://www.samsung.com/africa_fr</a>
COTE D'IVOIRE	8000 0077	<a href="http://www.samsung.com/africa_fr">http://www.samsung.com/africa_fr</a>
DRC	499999	<a href="http://www.samsung.com">http://www.samsung.com</a>
GHANA	0800-10077 0302-200077	<a href="http://www.samsung.com/africa_en">http://www.samsung.com/africa_en</a>
KENYA	0800 545 545	<a href="http://www.samsung.com">http://www.samsung.com</a>
NAMIBIA	08 197 267 864	<a href="http://www.samsung.com">http://www.samsung.com</a>
NIGERIA	0800-726-7864	<a href="http://www.samsung.com/africa_en">http://www.samsung.com/africa_en</a>
MOZAMBIQUE	847267864 / 827267864	<a href="http://www.samsung.com">http://www.samsung.com</a>
RWANDA	9999	<a href="http://www.samsung.com">http://www.samsung.com</a>
SENEGAL	800-00-0077	<a href="http://www.samsung.com/africa_fr">http://www.samsung.com/africa_fr</a>
SOUTH AFRICA	0860 SAMSUNG (726 7864)	<a href="http://www.samsung.com">http://www.samsung.com</a>
SUDAN	1969	<a href="http://www.samsung.com">http://www.samsung.com</a>
TANZANIA	0685 88 99 00	<a href="http://www.samsung.com">http://www.samsung.com</a>
UGANDA	0800 300 300	<a href="http://www.samsung.com">http://www.samsung.com</a>
ZAMBIA	0211 350370	<a href="http://www.samsung.com">http://www.samsung.com</a>

## Responsibility for the Pay Service (Cost to Customers)



When the service is requested, in spite of in warranty, we may charge you for a visit from a service technician in the following cases.

### Not a product defect

Cleaning of the product, Adjustment, Explanation, Re-installation and etc.

- If a service technician gives instructions on how to use product or simply adjusts options without disassembling product.
- If a defect is caused by external environmental factors. (Internet, Antenna, Wired Signal, etc.)
- If a product is reinstalled or devices are connected additionally after installing the purchased product for the first time.
- If a product is reinstalled to move to a different spot or to move to a different house.
- If customer requests instructions on how to use because of another company's product.
- If customer requests instructions on how to use the network or another company's program.
- If customer requests software installation and setup for the product.
- If a service technician removes/cleans dusts or foreign materials inside of the product.
- If customer requests an installation additionally after purchasing a product through home-shopping or online.

### A Product damage caused by customer's fault

Product damage caused by customer's mishandling or wrong repair

If a product damage is caused by;

- external impact or drop.
- use of supplies or separately sold product unspecified by Samsung.
- repair from a person besides an engineer of outsourcing service company or partner of Samsung Electronics Co., Ltd.
- remodeling or repairing the product by customer.
- using it with incorrect voltage or non-authorised electrical connections.
- not following the "cautions" in User Manual.

### Others

- If product fails by natural disaster. (lightning, fire, earthquake, flood damage, etc)
- If consumable components are all used up. (Battery, Toner, Fluorescent lights, Head, Vibrator, Lamp, Filter, Ribbon, etc.)



If customer requests a service in case the product has no defect, service fee may be charged. So please read User Manual first.



## Correct Disposal

### Correct Disposal of This Product (Waste Electrical & Electronic Equipment)



(Applicable in countries with separate collection systems)

This marking on the product, accessories or literature indicates that the product and its electronic accessories (e.g. charger, headset, USB cable) should not be disposed of with other household waste at the end of their working life. To prevent possible harm to the environment or human health from uncontrolled waste disposal, please separate these items from other types of waste and recycle them responsibly to promote the sustainable reuse of material resources.

Household users should contact either the retailer where they purchased this product, or their local government office, for details of where and how they can take these items for environmentally safe recycling.

Business users should contact their supplier and check the terms and conditions of the purchase contract. This product and its electronic accessories should not be mixed with other commercial wastes for disposal.

(India Only)

For more information on safe disposal and recycling visit our website [www.samsung.com/in](http://www.samsung.com/in) or contact our Helpline numbers - 18002668282, 180030008282.9

## Terminology

### OSD (On Screen Display)

On screen display (OSD) allows you to customize on-screen settings to optimize the picture quality as required. You can change the screen brightness, tint, size and many other settings using menus displayed on the screen.

### Gamma

The Gamma menu adjusts the grey scale that represents middle tones on the screen. Adjusting the brightness brightens the whole screen, but adjusting Gamma only brightens the medium brightness.

### Grey scale

Scale refers to levels of color intensity that show variations of color change from darker areas to brighter areas on the screen. Changes to the screen brightness are expressed with black and white variation, and grey scale refers to the medium area between black and white. Changing the grey scale through Gamma adjustment will change the medium brightness on the screen.

### Scanning rate

Scanning rate, or refresh rate, refers to the frequency of screen refreshes. Screen data is transmitted as it refreshes to display an image, although the refreshing is invisible to the naked eye. The number of screen refreshes is called scanning rate and is measured in Hz. A scanning rate of 60Hz means that the screen refreshes 60 times per second. The screen scanning rate depends on the performance of the graphics cards in your PC and monitor.

### Horizontal Frequency

Characters or images displayed on the monitor screen consist of numerous dots (pixels). Pixels are transmitted in horizontal lines, which are then arranged vertically to create an image. The horizontal frequency is measured in kHz and represents how many times horizontal lines per second are transmitted and displayed on the monitor screen. A horizontal frequency of 85 means that the horizontal lines that make up an image are transmitted 85000 times per second. The horizontal frequency is indicated in 85kHz.

### Vertical Frequency

One image is made of numerous horizontal lines. The vertical frequency is measured in Hz and represents how many images can be created per second by those horizontal lines. A vertical frequency of 60 means that an image is transmitted 60 times per second. The vertical frequency is also called "refresh rate" and affects screen flicker.

## Resolution

Resolution is the number of horizontal pixels and vertical pixels that form a screen. It represents the level of display detail.

A higher resolution displays a greater amount of information on the screen and is suitable for performing multiple tasks at the same time.

E.g. A resolution of 1920 x 1080 consists of 1920 horizontal pixels (horizontal resolution) and 1080 vertical lines (vertical resolution).

E.g. A resolution of 1920 x 1200 consists of 1920 horizontal pixels (horizontal resolution) and 1200 vertical lines (vertical resolution).

## Plug & Play

The Plug & Play feature allows the automatic exchange of information between a monitor and PC to produce an optimum display environment.

The monitor uses VESA DDC (international standard) to execute Plug & Play.

# Index

---

## B

Before Connecting 28

Brightness 35

## C

Checking the Contents 19

Cleaning 8

Connecting and Using a PC 28

Contact SAMSUNG WORLD WIDE 90

Contrast 36

Copyright 7

Correct Disposal 97

Correct posture to use the product 18

## D

Display Time 64

## E

Easy Setting Box 77

Eco Saving 66

## G

Game Mode 38

General 84

## H

HDMI Black Level 45

## I

Image Size 47

INFORMATION 74

Installation 25

## K

Key Repeat Time 69

## L

Language 63

## O

Off Timer 70

## P

Parts 20

PC/AV Mode 67

Power LED On 72

PowerSaver 85

## Q

Q & A 82

## R

Requirements Before Contacting Samsung  
Customer Service Center 79

Reset All 73

Response Time 46

Responsibility for the Pay Service (Cost to  
Customers) 96

## S

Safety Precautions 10

SAMSUNG MAGIC Angle 41

SAMSUNG MAGIC Bright 39

Sharpness 37

Source Detection 68

Standard Signal Mode Table 86

# Index

---

## T

Terminology 98

Transparency 65