

Mobile Phone
user manual

- Some of the contents in this manual may differ from your phone depending on the software of the phone or your service provider.
- Visit the Samsung website to view the Samsung Mobile function guide in Adobe Acrobat (.pdf) format. The function guide contains common topics about applications and features that appear in many different models of Samsung mobile phones.
- This product includes certain free/open source software. The exact terms of the licenses, disclaimers, acknowledgements and notices are available on the Samsung's website <http://opensource.samsung.com>.

www.samsungmobile.com



Printed in Korea
GH68-31912A Rev.1.1
English (EU). 01/2014

- Do not engage in stressful or emotional conversations that may be distracting. Make people you are talking with aware you are driving and suspend conversations that have the potential to divert your attention from the road.
- Use your device to call for help. Dial a local emergency number in the case of fire, traffic accident, or medical emergencies.
- Use your device to help others in emergencies. If you see an auto accident, a crime in progress, or a serious emergency where lives are in danger, call a local emergency number.
- Call roadside assistance or a special, non-emergency assistance number when necessary. If you see a broken-down vehicle posing no serious hazard, a broken traffic signal, a minor traffic accident where no one appears injured, or a vehicle you know to be stolen, call roadside assistance or another special, non-emergency number.

Proper care and use of your mobile device

Keep your device dry

- Humidity and all types of liquids may damage device parts or electronic circuits.
- When wet, remove the battery without turning on your device. Dry your device with a towel and take it to a service centre.
- Liquids will change the colour of the label that indicates water damage inside the device. Water damage to your device can void your manufacturer's warranty.

Do not use or store your device in dusty, dirty areas

Dust can cause your device to malfunction.

Do not store your device on slopes

If your device falls, it can be damaged.

Do not store your device in hot or cold areas. Use your device at -20 °C to 50 °C

- Your device can explode if left inside a closed vehicle, as the inside temperature can reach up to 80 °C.

Warning: Prevent electric shock, fire, and explosion

Do not use damaged power cords or plugs, or loose electrical sockets

Do not touch the power cord with wet hands, or disconnect the charger by pulling on the cord

Do not bend or damage the power cord

Do not use your device while charging or touch your device with wet hands

Do not short-circuit the charger or the battery

Do not drop or cause an impact to the charger or the battery

Do not charge the battery with chargers that are not approved by the manufacturer

Do not use your device during a thunderstorm

Your device may malfunction and your risk of electric shock is increased.

Do not handle a damaged or leaking Lithium Ion (Li-Ion) battery

For safe disposal of your Li-Ion batteries, contact your nearest authorised service centre.

Handle and dispose of batteries and chargers with care

- Use only Samsung-approved batteries and chargers specifically designed for your device. Incompatible batteries and chargers can cause serious injuries or damage to your device.
- Never dispose of batteries or devices in a fire. Follow all local regulations when disposing of used batteries or devices.

- Never place batteries or devices on or in heating devices, such as microwave ovens, stoves, or radiators. Batteries may explode when overheated.
- Never crush or puncture the battery. Avoid exposing the battery to high external pressure, which can lead to an internal short circuit and overheating.

Protect the device, batteries, and chargers from damage

- Avoid exposing your device and batteries to very cold or very hot temperatures.
- Extreme temperatures can cause the deformation of the device and reduce the charging capacity and life of your device and batteries.
- Prevent batteries from contacting metal objects, as this can create a connection between the + and – terminals of your batteries and lead to temporary or permanent battery damage.
- Never use a damaged charger or battery.

Caution: Follow all safety warnings and regulations when using your device in restricted areas

Turn off your device where prohibited

Comply with all regulations that restrict the use of a mobile device in a particular area.

Do not use your device near other electronic devices

Most electronic devices use radio frequency signals. Your device may interfere with other electronic devices.

Do not use your device near a pacemaker

- Avoid using your device within a 15 cm range of a pacemaker if possible, as your device can interfere with the pacemaker.

- If you must use your device, keep at least 15 cm away from the pacemaker.
- To minimise the possible interference with a pacemaker, use your device on the opposite side of your body from the pacemaker.

Do not use your device in a hospital or near medical equipment that can be interfered with by radio frequency

If you personally use any medical equipment, contact the manufacturer of the equipment to ensure the safety of your equipment from radio frequency.

If you are using a hearing aid, contact the manufacturer for information about radio interference

Some hearing aids may be interfered with by the radio frequency of your device. Contact the manufacturer to ensure the safety of your hearing aid.

Turn off the device in potentially explosive environments

- Turn off your device in potentially explosive environments instead of removing the battery.
- Always comply with regulations, instructions and signs in potentially explosive environments.
- Do not use your device at refuelling points (service stations), near fuels or chemicals, and at blasting areas.
- Do not store or carry flammable liquids, gases, or explosive materials in the same compartment as the device, its parts, or accessories.

Turn off your device when in an aircraft

Using your device in an aircraft is illegal. Your device may interfere with the electronic navigation instruments of the aircraft.

CE0168

Protect your hearing and ears when using a headset



- Excessive exposure to loud sounds can cause hearing damage.
- Exposure to loud sounds while walking may distract your attention and cause an accident.
- Always turn the volume down before plugging the earphones into an audio source and use only the minimum volume setting necessary to hear your conversation or music.
- In dry environments, static electricity can build up in the headset. Avoid using headsets in dry environments or touch a metal object to discharge static electricity before connecting a headset to the device.
- Do not use a headset while driving or riding. Doing so may distract your attention and cause an accident, or may be illegal depending on your region.

Use caution when using the device while walking or moving

Always be aware of your surroundings to avoid injury to yourself or others.

Do not carry your device in your back pockets or around your waist

You can be injured or damage the device if you fall.

Do not disassemble, modify, or repair your device

- Any changes or modifications to your device can void your manufacturer's warranty. For service, take your device to a Samsung Service Centre.
- Do not disassemble or puncture the battery, as this can cause explosion or fire.

Do not paint your device

Paint can clog moving parts and prevent proper operation. If you are allergic to the paint or metal parts of the device, stop using the device and consult your physician.

Electronic devices in a motor vehicle may malfunction due to the radio frequency of your device

Electronic devices in your car may malfunction due to radio frequency of your device. Contact the manufacturer for more information.

Comply with all safety warnings and regulations regarding mobile device usage while operating a vehicle

While driving, safely operating the vehicle is your first responsibility. Never use your mobile device while driving, if it is prohibited by law. For your safety and the safety of others, practice good common sense and remember the following tips:

- Use a hands-free device.
- Get to know your device and its convenience features, such as speed dial and redial. These features help you reduce the time needed to place or receive calls on your mobile device.
- Position your device within easy reach. Be able to access your wireless device without removing your eyes from the road. If you receive an incoming call at an inconvenient time, let your voice mail answer it for you.
- Let the person you are speaking with know you are driving. Suspend calls in heavy traffic or hazardous weather conditions. Rain, sleet, snow, ice, and heavy traffic can be hazardous.
- Do not take notes or look up phone numbers. Jotting down a "to do" list or flipping through your address book takes attention away from your primary responsibility of driving safely.
- Dial sensibly and assess the traffic. Place calls when you are not moving or before pulling into traffic. Try to plan calls when your car will be stationary. If you need to make a call, dial only a few numbers, check the road and your mirrors, then continue.

When cleaning your device:

- Wipe your device or charger with a towel or a rubber.
- Clean the terminals of the battery with a cotton ball or a towel.
- Do not use chemicals or detergents.

Do not use the device if the screen is cracked or broken

Broken glass or acrylic could cause injury to your hands and face. Take the device to a Samsung Service Centre to have it repaired.

Do not use the device for anything other than its intended use

Avoid disturbing others when using the device in public

Do not allow children to use your device

Your device is not a toy. Do not allow children to play with it as they could hurt themselves and others, damage the device, or make calls that increase your charges.

Install mobile devices and equipment with caution

- Ensure that any mobile devices or related equipment installed in your vehicle are securely mounted.
- Avoid placing your device and accessories near or in an air bag deployment area. Improperly installed wireless equipment can cause serious injury when air bags inflate rapidly.

Allow only qualified personnel to service your device

Allowing unqualified personnel to service your device may result in damage to your device and will void your manufacturer's warranty.

Handle SIM cards or memory cards with care

- Do not remove a card while the device is transferring or accessing information, as this could result in loss of data and/or damage to the card or device.
- Protect cards from strong shocks, static electricity, and electrical noise from other devices.
- Do not touch gold-coloured contacts or terminals with your fingers or metal objects. If dirty, wipe the card with a soft cloth.

Ensure access to emergency services

Emergency calls from your device may not be possible in some areas or circumstances. Before travelling in remote or undeveloped areas, plan an alternate method of contacting emergency services personnel.

Specific Absorption Rate (SAR) certification information

Your device conforms to European Union (EU) standards that limit human exposure to radio frequency (RF) energy emitted by radio and telecommunications equipment. These standards prevent the sale of mobile devices that exceed a maximum exposure level (known as the Specific Absorption Rate, or SAR) of 2.0 W/kg.

During testing, the maximum SAR recorded for this model was 0.732 W/kg. In normal use, the actual SAR is likely to be much lower, as the device has been designed to emit only the RF energy necessary to transmit a signal to the nearest base station. By automatically emitting lower levels when possible, your device reduces your overall exposure to RF energy.

The Declaration of Conformity statement at the back of this manual demonstrates your device's compliance with the European Radio & Terminal Telecommunications Equipment (R&TTE) directive. For more information about the SAR and related EU standards, visit the Samsung website.

Correct disposal of this product

(Waste Electrical & Electronic Equipment)

- (Applicable in the European Union and other European countries with separate collection systems)
- This marking on the product, accessories or literature indicates that the product and its electronic accessories (e.g. charger, headset, USB cable) should not be disposed of with other household waste at the end of their working life.

To prevent possible harm to the environment or human health from uncontrolled waste disposal, please separate these items from other types of waste and recycle them responsibly to promote the sustainable reuse of material resources.

Household users should contact either the retailer where they purchased this product, or their local government office, for details of where and how they can take these items for environmentally safe recycling. Business users should contact their supplier and check the terms and conditions of the purchase contract. This product and its electronic accessories should not be mixed with other commercial wastes for disposal.

This EEE is compliant with RoHS.

Correct disposal of batteries in this product



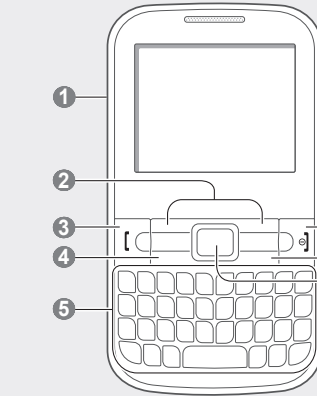
(Applicable in the European Union and other European countries with separate battery return systems)

This marking on the battery, manual or packaging indicates that the batteries in this product should not be disposed of with other household waste at the end of their working life.

Where marked, the chemical symbols Hg, Cd or Pb indicate that the battery contains mercury, cadmium or lead above the reference levels in EC Directive 2006/66. If batteries are not properly disposed of, these substances can cause harm to human health or the environment.

To protect natural resources and to promote material reuse, please separate batteries from other types of waste and recycle them through your local, free battery return system.

Phone layout



1

Volume key

In Idle mode, adjust the key tone volume; Make a fake call (down); Send an SOS message
▶ "Activate and send an SOS message"
▶ "Make a fake call"

2

Softkeys

Perform actions indicated at the bottom of the display

3

Dial key

Make or answer a call; In Idle mode, retrieve recently dialled, missed, or received numbers

4

Message key

Open a message composer screen

5

QWERTY keyboard

6

SIM selection key

In Idle mode, switch between SIM cards; Access the SIM cards management menu (press and hold)

7

Power/End key

Turn the phone on and off (press and hold); End a call; In Menu mode, cancel input and return to Idle mode

8

SNS key

Access the Comms. menu

9

Optical track pad

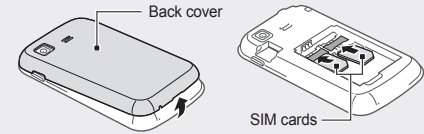
Scroll through menu options (drag); In Idle mode, access Menu mode (press); In Menu mode, select the highlighted menu option or confirm an input (press)

Your phone displays the following status indicators on the top of the screen:

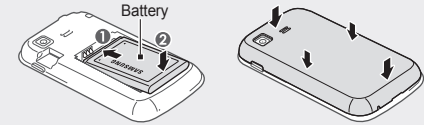
Icon	Description	Icon	Description
	No signal		FM radio on
	Signal strength		FM radio suspended
	Network searching		Music playback in progress
	GPRS network connected		Music playback paused
	Call in progress		New text message (SMS)
	SOS message feature activated		New multimedia message (MMS)
	Browsing the web		New email message
	Connecting to secured web page		New Exchange Activesync message
	Roaming (outside of normal service area)		New voice mail message
	Call diverting activated		Normal profile activated
	No SIM card		Silent profile activated
	Synchronised with a web server		Battery power level
	Bluetooth activated		Current time
	Alarm activated		
	Memory card inserted		

Install the SIM card and battery

1. Remove the back cover and insert the SIM card.

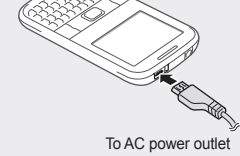


2. Insert the battery and replace the back cover.



Charge the battery

1. Plug the supplied travel adapter.
2. When charging is finished, unplug the travel adapter.



Do not remove the battery from the phone before unplugging the travel adapter first. Otherwise, the phone may be damaged.

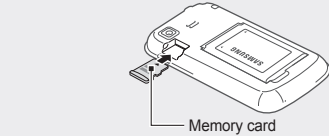
Insert a memory card (optional)

Your phone accepts microSD™ or microSDHC™ memory cards up to 8 GB (depending on memory card manufacturer and type).



Formatting the memory card on a PC may cause incompatibility with your phone. Format the memory card only on the phone.

1. Remove the back cover.
2. Insert a memory card with the gold-coloured contacts facing down.



3. Push the memory card in the memory card slot until it locks in place.
4. Replace the back cover.

Instructional icons

	Note: notes, usage tips, or additional information
	Followed by: the order of options or menus you must select to perform a step; for example: In Menu mode, select Messages → Create message (represents Messages , followed by Create message)
	Square brackets: phone keys; for example: [e] (represents the Power/End key)
	Angled brackets: softkeys that control different functions at each screen; for example: <OK> (represents the OK softkey)

Turn your phone on or off

To turn your phone on,

1. Press and hold **[e]**.
2. Enter your PIN and press **<OK>** (if necessary).

To turn your phone off, repeat step 1 above.

Manage your SIM cards

Your phone supports Dual SIM mode that enables you to use two SIM cards at the same time without changing them. Learn to activate SIM cards and change the card settings.

To switch networks

In Idle mode, press **[☒]** to switch between networks.

To activate SIM cards

1. In Menu mode, select **Settings** → **SIM cards management**.
You can also press and hold **[☒]** in Idle mode.
2. Select **Network** and scroll left or right to a SIM card.
3. Press **<Change>** to activate the card.

To switch SIM cards automatically

1. In Menu mode, select **Settings** → **SIM cards management**.
2. Select **SIM auto switch**.
3. Press **<Change>** to activate the auto switch feature.
4. Select a SIM card and set the starting and ending time to switch to the SIM card.
5. Press **<Save>**.
6. Repeat steps 4-5 for another SIM card.

Make a call

1. In Idle mode, enter an area code and a phone number.
2. Press **[☒]** to dial the number.
3. To end the call, press **[e]**.

Answer a call

1. When a call comes in, press **[☒]**.
2. To end the call, press **[e]**.

Adjust the volume

To adjust the volume of the ringtone

1. In Menu mode, select **Settings** → **Sound profiles**.
2. Scroll to the profile you are using.

If you are using the silent or offline profile, you are not allowed to adjust the volume of the ringtone.

3. Press **<Edit>** → **Volume**.
4. Scroll to **Call alert**.
5. Scroll left or right to adjust the volume level and press **<Save>**.

To adjust the volume of voice during a call

While a call is in progress, press the Volume key to adjust the volume.



In noisy environments, you may have difficulty hearing the calls while using the speakerphone feature. For better audio performance, use the normal phone mode.

Change your ringtone

1. In Menu mode, select **Settings** → **Sound profiles**.
2. Scroll to the profile you are using.



If you are using the silent or offline profile, you are not allowed to change the ringtone.

3. Press **<Edit>** → **Voice call ringtone**.
4. Select a memory location (if necessary).
5. Select a ringtone.

To switch to another profile, select it from the list.

Call a recently dialled number

1. In Idle mode, press **[☒]** to display a list of recent numbers.
2. Scroll left or right to a call type.
3. Scroll up or down to a number or name.
4. Press the optical track pad to view details of the call or **[☒]** to dial the number.

Use the smart home screen

The smart home screen allows you to access your favourite applications and contacts and view upcoming events or tasks. You can customise the smart home screen to fit your preferences and needs.



When you are using the smart home screen, the Navigation key does not work as shortcuts.

To customise the smart home screen

1. In Menu mode, select **Settings** → **Display** → **Smart home**.
2. Press **<Edit>**.
3. Select the items to display on the smart home screen.
4. Press **<Options>** → **Save**.
5. Press the optical track pad.



You can change the idle screen to another style. In Menu mode, select **Settings** → **Display** → **Smart home** and scroll left or right to a style you want.

To access the smart home items

Drag on the optical track pad to scroll through the items on the smart home screen and press the optical track pad to select an item.

To customise the shortcuts toolbar

1. In Menu mode, select **Settings** → **Display** → **Smart home**.
2. Press **<Edit>**.
3. Scroll to **Shortcuts toolbar** and press **<Options>** → **Edit shortcuts**.
4. Select a menu to change or an empty location and press the optical track pad.
5. Select the menus you want.
Drag on the optical track pad right to select submenus (if necessary).
6. Press **<Save>**.

Enter text

To change the text input mode

- Press **<Options>** → **Writing options** → **Writing language** to change the input language.
- Press **<Options>** → **Predictive text on** to switch to T9 mode.
- Press **[☺]** to open the symbol panel.



The keys required to open the symbol panel may differ depending on your region or service provider.

- Press **[⇧]** to change case.

To register SIM cards

1. In Menu mode, select **Settings** → **SIM cards management**.
2. Select **Register card**.
3. Scroll left or right to a SIM card.
4. Press **<Select>** and change the name and the icon of the card.

Access menus

To access your phone's menus,

1. In Idle mode, press **<Menu>** or the optical track pad to access Menu mode.
2. Use the optical track pad to scroll to a menu or option.
3. Press **<Select>**, **<OK>**, or the optical track pad to confirm the highlighted option.
4. Press **<Back>** to move up one level; Press **[e]** to close the menu or application and return to Idle mode.



- When you access a menu requiring the PIN2, you must enter the PIN2 supplied with the SIM card. For details, contact your service provider.
- Samsung is not responsible for any loss of passwords or private information or other damages caused by illegal software.

T9 mode

1. Press the appropriate alphanumeric keys to enter an entire word.
2. When the word displays correctly, press **[—]** to insert a space. If the correct word does not display, drag on the optical track pad up or down to select an alternate word.

ABC mode

Press an appropriate alphanumeric key to enter a character.

Number mode

Press an appropriate alphanumeric key to enter a number.

Symbol mode

Press an appropriate alphanumeric key to enter a symbol.



- To move the cursor, drag on the optical track pad.
- To delete characters one by one, press **[]**. To delete characters quickly, press and hold **[]**.
- To insert a space between characters, press **[—]**.
- To change line, press **[⇧]**.

Add a new contact



The memory location to save new contacts may be preset depending on your service provider. To change the memory location, in Menu mode, select **Contacts** → **<Options>** → **Settings** → **Save new contacts to** → a memory location.

1. In Idle mode, enter a phone number and press the optical track pad.
2. Select a memory location (if necessary).
3. Select **Create contact**.
4. Select a number type (if necessary).
5. Enter contact information.
6. Press the optical track pad, or press **<Options>** → **Save**.

Send and view messages



When you set the PC connection settings to mass storage and connect your phone to a PC, the PC will recognise your phone as a removable disk. If you format the removable disk, all multimedia messages and emails (including emails downloaded from Exchange server) saved in your phone will be deleted. Back up important data before formatting your phone on a PC.

To send a text or multimedia message

1. In Menu mode, select **Messages** → **Create message**.
2. Enter a recipient number and scroll down.

3. Enter your message text. See "*Enter text.*"
For sending as a text message, skip to step 5.
For attaching multimedia, continue with step 4.
4. Press **<Options>** → **Add multimedia** and add an item.
5. Press the optical track pad to send the message.

To view text or multimedia messages

1. In Menu mode, select **Messages** → **Inbox**.
2. Select a text or multimedia message.

Make fake calls

You can simulate an incoming call when you want to get out of meetings or unwanted conversations.

To activate the fake call feature

In Menu mode, select **Settings** → **Call** → **Fake call** → **Fake call hot key**.

To make a fake call

In Idle mode, press and hold the Volume key down.

Activate and send an SOS message

In an emergency, you can send SOS messages to your family or friends for help.

To activate the SOS message

1. In Menu mode, select **Messages** → **Settings** → **SOS messages** → **Sending options**.
2. Press **<Change>** to turn on the SOS message.
3. Scroll down and press the optical track pad to open the recipient list.
4. Press **<Search>** to open your contact list.
5. Select a contact.
6. Select a number (if necessary).
7. When you are finished selecting contacts, press the optical track pad to save the recipients.
8. Scroll down and set the number of times to repeat the SOS message.
9. Press **<Back>** → **<Yes>**.

To send an SOS message

1. With the phone locked, press either end of the Volume key four times to send an SOS message to preset numbers.
The phone switches to SOS mode and sends the preset SOS message.
2. To exit SOS mode, press **[e]**.

Use the camera

To capture photos

1. In Idle mode, press and hold **[☒]** to turn on the camera.
2. Aim the lens at the subject and make any adjustments.
3. Press the optical track pad or **[☒]** to take a photo.
The photo is saved automatically.

To view photos

In Menu mode, select **My files** → **Images** → a photo file.

To capture videos

1. In Idle mode, press and hold **[☒]** to turn on the camera.
2. Press **[1]** to switch to the Camcorder.
3. Aim the lens at the subject and make any adjustments.
4. Press the optical track pad or **[☒]** to start recording.
5. Press the optical track pad, **<Stop>**, or **[☒]** to stop recording.
The video is saved automatically.

To view videos

In Menu mode, select **My files** → **Videos** → a video file.

SAMSUNG
ELECTRONICS

SAMSUNG

Declaration of Conformity

Product details

For the following
Product : GSM BT Mobile Phone
Model(s) : GT-C3222

C

€

0168

Declaration & Applicable standards

We hereby declare, that the product above is in compliance with the essential requirements of the R&TTE Directive (1999/5/EC) by application of:

SAFETY	EN 60950-1 : 2006 + A12 : 2011
SAR	EN 50360 : 2001 / AC 2006 EN 62209-1 : 2006
EMC	EN 301 489-01 V1.9.2 (09-2011) EN 301 489-07 V1.3.1 (11-2005) EN 301 489-17 V2.1.1 (05-2009)
RADIO	EN 301 511 V9.0.2 (03-2003) EN 300 328 V1.7.1 (10-2006)

and the Directive (2011/65/EU) on the restriction of the use of certain hazardous substances in electrical and electronic equipment.

The conformity assessment procedure referred to in Article 10 and detailed in Annex[IV] of Directive 1999/5/EC has been followed with the involvement of the following Notified Body(ies):
TÜV SÜD BABT, Octagon House, Concorde Way, Fareham,
Hampshire, PO15 5RL, UK*
Identification mark: 0168

Representative in the EU

Samsung Electronics Euro QA Lab,
Blackbushe Business Park, Saxony Way,
Yateley, Hampshire, GU46 6GG, UK
2013.01.16
(Place and date of issue)

Joong-Hoon Choi / Lab. Manager
(Name and signature of authorised person)

* This is not the address of Samsung Service Centre. For the address or the phone number of Samsung Service Centre, see the warranty card or contact the retailer where you purchased your product.