

Mobile Phone  
user manual

- Some of the contents in this manual may differ from your phone depending on the software of the phone or your service provider.
- Third party services may be terminated or interrupted at any time, and Samsung makes no representation or warranty that any content or service will remain available for any period of time.
- This product includes certain free/open source software. The exact terms of the licenses, disclaimers, acknowledgements and notices are available on the Samsung's website [opensource.samsung.com](http://opensource.samsung.com).

[www.samsung.com](http://www.samsung.com)

Printed in Korea  
GH68-34440K  
English (MEA). 04/2011. Rev. 1.0



- Do not engage in stressful or emotional conversations that may be distracting. Make people you are talking with aware you are driving and suspend conversations that have the potential to divert your attention from the road.
- Use your device to call for help. Dial a local emergency number in the case of fire, traffic accident, or medical emergencies.
- Use your device to help others in emergencies. If you see an auto accident, a crime in progress, or a serious emergency where lives are in danger, call a local emergency number.
- Call roadside assistance or a special, non-emergency assistance number when necessary. If you see a broken-down vehicle posing no serious hazard, a broken traffic signal, a minor traffic accident where no one appears injured, or a vehicle you know to be stolen, call roadside assistance or another special, non-emergency number.

Proper care and use of your mobile device

Keep your device dry

- Humidity and all types of liquids may damage device parts or electronic circuits.
- When wet, remove the battery without turning on your device. Dry your device with a towel and take it to a service centre.
- Liquids will change the colour of the label that indicates water damage inside the device. Water damage to your device can void your manufacturer's warranty.

Do not use or store your device in dusty, dirty areas

Dust can cause your device to malfunction.

Do not store your device on slopes

If your device falls, it can be damaged.

Do not store your device in hot or cold areas. Use your device at -20 °C to 50 °C

- Your device can explode if left inside a closed vehicle, as the inside temperature can reach up to 80 °C.

Warning: Prevent electric shock, fire, and explosion

Do not use damaged power cords or plugs, or loose electrical sockets

Do not touch the power cord with wet hands, or disconnect the charger by pulling on the cord

Do not bend or damage the power cord

Do not use your device while charging or touch your device with wet hands

Do not short-circuit the charger or the battery

Do not drop or cause an impact to the charger or the battery

Do not charge the battery with chargers that are not approved by the manufacturer

Do not use your device during a thunderstorm

Your device may malfunction and your risk of electric shock is increased.

Do not handle a damaged or leaking Lithium Ion (Li-Ion) battery

For safe disposal of your Li-Ion batteries, contact your nearest authorised service centre.

Handle and dispose of batteries and chargers with care

- Use only Samsung-approved batteries and chargers specifically designed for your device. Incompatible batteries and chargers can cause serious injuries or damage to your device.
- Never dispose of batteries or devices in a fire. Follow all local regulations when disposing of used batteries or devices.

- Do not expose your device to direct sunlight for extended periods of time (such as on the dashboard of a car).
- Store the battery at 0 °C to 40 °C.

Do not store your device with such metal objects as coins, keys and necklaces

- Your device may become deformed or malfunction.
- If the battery terminals are in contact with metal objects, it may cause a fire.

Do not store your device near magnetic fields

- Your device may malfunction or the battery may discharge from exposure to magnetic fields.
- Magnetic stripe cards, including credit cards, phone cards, passbooks, and boarding passes, may be damaged by magnetic fields.
- Do not use carrying cases or accessories with magnetic closures or allow your device to come in contact with magnetic fields for extended periods of time.

Do not store your device near or in heaters, microwaves, hot cooking equipment, or high pressure containers

- The battery may leak.
- Your device may overheat and cause a fire.

Do not drop your device or cause impacts to your device

- The screen of your device may be damaged.
- If bent or deformed, your device may be damaged or parts may malfunction.

Do not use a flash close to the eyes of people or animals

Using a flash close to the eyes may cause temporary loss of vision or damage to the eyes.

Ensure maximum battery and charger life

- Avoid charging batteries for more than a week, as overcharging may shorten battery life.

- Never place batteries or devices on or in heating devices, such as microwave ovens, stoves, or radiators. Batteries may explode when overheated.
- Never crush or puncture the battery. Avoid exposing the battery to high external pressure, which can lead to an internal short circuit and overheating.

Protect the device, batteries, and chargers from damage

- Avoid exposing your device and batteries to very cold or very hot temperatures.
- Extreme temperatures can cause the deformation of the device and reduce the charging capacity and life of your device and batteries.
- Prevent batteries from contacting metal objects, as this can create a connection between the + and – terminals of your batteries and lead to temporary or permanent battery damage.
- Never use a damaged charger or battery.

Caution: Follow all safety warnings and regulations when using your device in restricted areas

Turn off your device where prohibited

Comply with all regulations that restrict the use of a mobile device in a particular area.

Do not use your device near other electronic devices

Most electronic devices use radio frequency signals. Your device may interfere with other electronic devices.

Do not use your device near a pacemaker

- Avoid using your device within a 15 cm range of a pacemaker if possible, as your device can interfere with the pacemaker.

- Over time, unused batteries will discharge and must be recharged before use.
- Disconnect chargers from power sources when not in use.
- Use batteries only for their intended purposes.

Use manufacturer-approved batteries, chargers, accessories and supplies

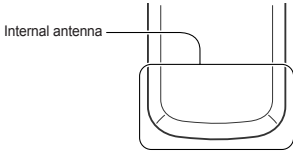
- Using generic batteries or chargers may shorten the life of your device or cause the device to malfunction.
- Samsung cannot be responsible for the user's safety when using accessories or supplies that are not approved by Samsung.

Do not bite or suck on the device or the battery

- Doing so may damage the device or cause explosion.
- If children use the device, make sure that they use the device properly.

When speaking on the device:

- Hold the device upright, as you would with a traditional phone.
- Speak directly into the mouthpiece.
- Avoid contact with your device's internal antenna. Touching the antenna may reduce the call quality or cause the device to transmit more radio frequency than necessary.



- Hold the device with a relaxed grip, press the keys lightly, use special features that reduce the number of keys you have to press (such as templates and predictive text), and take frequent breaks.

- If you must use your device, keep at least 15 cm away from the pacemaker.
- To minimise the possible interference with a pacemaker, use your device on the opposite side of your body from the pacemaker.

Do not use your device in a hospital or near medical equipment that can be interfered with by radio frequency

If you personally use any medical equipment, contact the manufacturer of the equipment to ensure the safety of your equipment from radio frequency.

If you are using a hearing aid, contact the manufacturer for information about radio interference

Some hearing aids may be interfered with by the radio frequency of your device. Contact the manufacturer to ensure the safety of your hearing aid.

Turn off the device in potentially explosive environments

- Turn off your device in potentially explosive environments instead of removing the battery.
- Always comply with regulations, instructions and signs in potentially explosive environments.
- Do not use your device at refuelling points (service stations), near fuels or chemicals, and at blasting areas.
- Do not store or carry flammable liquids, gases, or explosive materials in the same compartment as the device, its parts, or accessories.

Turn off your device when in an aircraft

Using your device in an aircraft is illegal. Your device may interfere with the electronic navigation instruments of the aircraft.

Protect your hearing



- Excessive exposure to loud sounds can cause hearing damage.
- Exposure to loud sounds while driving may distract your attention and cause an accident.
- Always turn the volume down before plugging the earphones into an audio source and use only the minimum volume setting necessary to hear your conversation or music.

Use caution when using the device while walking or moving

Always be aware of your surroundings to avoid injury to yourself or others.

Do not carry your device in your back pockets or around your waist

You can be injured or damage the device if you fall.

Do not disassemble, modify, or repair your device

- Any changes or modifications to your device can void your manufacturer's warranty. For service, take your device to a Samsung Service Centre.
- Do not disassemble or puncture the battery, as this can cause explosion or fire.

Do not paint or put stickers on your device

Paint and stickers can clog moving parts and prevent proper operation. If you are allergic to paint or metal parts of the product, you may experience itching, eczema, or swelling of the skin. When this happens, stop using the product and consult your physician.

When cleaning your device:

- Wipe your device or charger with a towel or a rubber.
- Clean the terminals of the battery with a cotton ball or a towel.
- Do not use chemicals or detergents.

Electronic devices in a motor vehicle may malfunction due to the radio frequency of your device

Electronic devices in your car may malfunction due to radio frequency of your device. Contact the manufacturer for more information.

Comply with all safety warnings and regulations regarding mobile device usage while operating a vehicle

While driving, safely operating the vehicle is your first responsibility. Never use your mobile device while driving, if it is prohibited by law. For your safety and the safety of others, practice good common sense and remember the following tips:

- Use a hands-free device.
- Get to know your device and its convenience features, such as speed dial and redial. These features help you reduce the time needed to place or receive calls on your mobile device.
- Position your device within easy reach. Be able to access your wireless device without removing your eyes from the road. If you receive an incoming call at an inconvenient time, let your voice mail answer it for you.
- Let the person you are speaking with know you are driving. Suspend calls in heavy traffic or hazardous weather conditions. Rain, sleet, snow, ice, and heavy traffic can be hazardous.
- Do not take notes or look up phone numbers. Jotting down a "to do" list or flipping through your address book takes attention away from your primary responsibility of driving safely.
- Dial sensibly and assess the traffic. Place calls when you are not moving or before pulling into traffic. Try to plan calls when your car will be stationary. If you need to make a call, dial only a few numbers, check the road and your mirrors, then continue.

Do not use the device if the screen is cracked or broken

Broken glass or acrylic could cause injury to your hands and face. Take the device to a Samsung Service Centre to have it repaired.

Do not use the device for anything other than its intended use

Avoid disturbing others when using the device in public

Do not allow children to use your device

Your device is not a toy. Do not allow children to play with it as they could hurt themselves and others, damage the device, or make calls that increase your charges.

Install mobile devices and equipment with caution

- Ensure that any mobile devices or related equipment installed in your vehicle are securely mounted.
- Avoid placing your device and accessories near or in an air bag deployment area. Improperly installed wireless equipment can cause serious injury when air bags inflate rapidly.

Allow only qualified personnel to service your device

Allowing unqualified personnel to service your device may result in damage to your device and will void your manufacturer's warranty.

Handle SIM cards or memory cards with care

- Do not remove a card while the device is transferring or accessing information, as this could result in loss of data and/or damage to the card or device.
- Protect cards from strong shocks, static electricity, and electrical noise from other devices.
- Do not touch gold-coloured contacts or terminals with your fingers or metal objects. If dirty, wipe the card with a soft cloth.

Ensure access to emergency services

Emergency calls from your device may not be possible in some areas or circumstances. Before travelling in remote or undeveloped areas, plan an alternate method of contacting emergency services personnel.

Be sure to back up important data

Samsung is not responsible for data loss.

Do not distribute copyright-protected material

Do not distribute copyright-protected material that you have recorded to others without the permission of the content owners. Doing this may violate copyright laws. The manufacturer is not liable for any legal issues caused by the user's illegal use of copyrighted material.

Specific Absorption Rate (SAR) certification information

Your device conforms to European Union (EU) standards that limit human exposure to radio frequency (RF) energy emitted by radio and telecommunications equipment. These standards prevent the sale of mobile devices that exceed a maximum exposure level (known as the Specific Absorption Rate, or SAR) of 2.0 W/kg.

During testing, the maximum SAR recorded for this model was 0.611 W/kg. In normal use, the actual SAR is likely to be much lower, as the device has been designed to emit only the RF energy necessary to transmit a signal to the nearest base station. By automatically emitting lower levels when possible, your device reduces your overall exposure to RF energy.

The Declaration of Conformity statement at the back of this manual demonstrates your device's compliance with the European Radio & Terminal Telecommunications Equipment (R&TTE) directive. For more information about the SAR and related EU standards, visit the Samsung website.

Correct disposal of this product

(Waste Electrical & Electronic Equipment)



(Applicable in the European Union and other European countries with separate collection systems)

This marking on the product, accessories or literature indicates that the product and its electronic accessories

(e.g. charger, headset, USB cable) should not be disposed of with other household waste at the end of their working life.

To prevent possible harm to the environment or human health from uncontrolled waste disposal, please separate these items from other types of waste and recycle them responsibly to promote the sustainable reuse of material resources.

Household users should contact either the retailer where they purchased this product, or their local government office, for details of where and how they can take these items for environmentally safe recycling. Business users should contact their supplier and check the terms and conditions of the purchase contract. This product and its electronic accessories should not be mixed with other commercial wastes for disposal.

This EEE is compliant with RoHS.

Correct disposal of batteries in this product



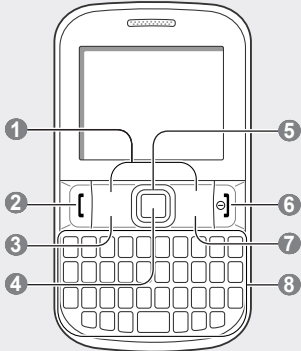
(Applicable in the European Union and other European countries with separate battery return systems)

This marking on the battery, manual or packaging indicates that the batteries in this product should not be disposed of with other household waste at the end of their working life.

Where marked, the chemical symbols Hg, Cd or Pb indicate that the battery contains mercury, cadmium or lead above the reference levels in EC Directive 2006/66. If batteries are not properly disposed of, these substances can cause harm to human health or the environment.

To protect natural resources and to promote material reuse, please separate batteries from other types of waste and recycle them through your local, free battery return system.

Phone layout



1	Softkeys	5	4-way navigation key
2	Dial key	6	Power/End key
3	SIM selection key	7	Message key
4	Confirm key	8	QWERTY keyboard

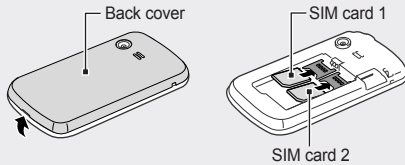
Indicator icons

Icon	Description	Icon	Description
	Signal strength <sup>1</sup>		FM radio on
	GPRS network connected		FM radio suspended
	EDGE network connected		Music playback in progress
	Call in progress		New text message (SMS)
	SOS message feature activated		New multimedia message (MMS)
	Browsing the web		New email message
	Connecting to secured web page		New voice mail message
	Roaming (outside of normal service area)		Normal profile activated
	Call diverting activated		Silent profile activated
	Bluetooth activated		Battery power level
	Alarm activated		Current time
	Memory card inserted		

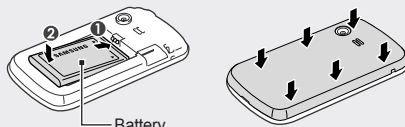
1. This icon may vary depending on your SIM card setting.

Install the SIM card and battery

1. Remove the back cover and insert the SIM card.



2. Insert the battery and replace the back cover.



Charge the battery

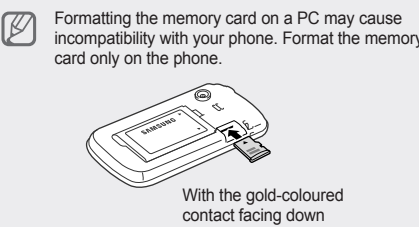
1. Plug a travel adapter.
2. When charging is finished, unplug the travel adapter.



- Do not remove the battery before removing the travel adapter. Doing this may cause damage to the phone.
- To save energy, unplug the travel adapter when not in use. The travel adapter does not have a power switch, so you must unplug the travel adapter from the outlet to interrupt the power supply. The travel adapter should remain close to the socket when in use.

Insert a memory card (optional)

Your phone accepts microSD™ or microSDHC™ memory cards up to 8 GB (depending on memory card manufacturer and type).

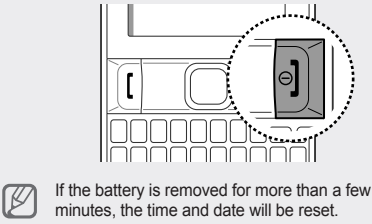


Instructional icons

	<b>Note:</b> notes, usage tips, or additional information
	<b>Followed by:</b> the order of options or menus you must select to perform a step
	<b>Square brackets:</b> phone keys
	<b>Angled brackets:</b> softkeys that control different functions at each screen

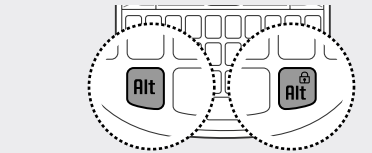
Turn your phone on or off

To turn your phone on or off, press and hold [ ].



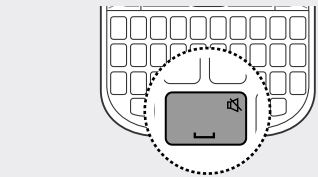
Lock or unlock the keys

In Idle mode, press and hold [ ] or [ ] to lock or unlock the keys.



Switch to Silent mode

In Idle mode, press and hold [ ] to mute or unmute your phone.



Access menus

1. In Idle mode, press **<Menu>** to access Menu mode.
- You may need to press the Confirm key to access Menu mode depending on your region or service provider.
2. Use the Navigation key to scroll to a menu or option.
3. Press **<Select>**, **<Save>**, or the Confirm key to confirm the highlighted option.
4. Press **<Back>** to move up one level; Press [ ] to close the menu or application and return to Idle mode.

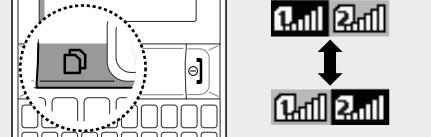
- When you access a menu requiring the PIN2, you must enter the PIN2 supplied with the SIM card. For details, contact your service provider.
- Samsung is not responsible for any loss of passwords or private information or other damages caused by illegal software.

Manage your SIM cards

Your phone supports Dual SIM mode that enables you to use two SIM cards at the same time without changing them. Learn to activate SIM cards and change the card settings.

To switch networks

Press [ ] to switch between networks.



To activate SIM cards

1. In Idle mode, press and hold [ ].
2. Select **Network** and scroll left or right to a SIM card.
3. Press **<Change>** to activate the card.

Make a call

1. In Idle mode, enter an area code and a phone number.
2. Press [ ] to dial the number.  
To adjust the volume during a call, press the Navigation key up or down.
3. To end the call, press [ ].

Answer a call

1. When a call comes in, press [ ].
2. To end the call, press [ ].

Enter text

Press appropriate alphanumeric keys to enter characters, numbers, and symbols. To enter characters on the upper half of the keys, press [ ] or [ ].

To change the text input mode

- Press **<Options>** → **Writing options** → **Writing language** to change the input language.
- Press **<Options>** → **Writing options** → **Predictive text on** to turn on T9 mode.
- Press [ ] to open the symbol panel.
- Press [ ] and [ ] to open the emoticon panel.

To use other features for text input

- To move the cursor, press the Navigation key.
- To change case, press [ ].
- To delete characters one by one, press [ ]. To delete characters quickly, press and hold [ ].
- To insert a space between characters, press [ ].
- To start a new line, press [ ].

Add a new contact

- The memory location to save new contacts may be preset depending on your service provider. To change the memory location, in Menu mode, select **Contacts** → **<Options>** → **Settings** → **Save new contacts to** → a memory location.

1. In Idle mode, enter a phone number and press the Confirm key.
2. Select a memory location (if necessary).
3. Select **Create contact**.
4. Select a number type (if necessary).
5. Enter contact information.
6. Press the Confirm key.

Send and view messages

To send a text or multimedia message

1. In Menu mode, select **Messages** → **Create message**.
2. Enter a recipient number and scroll down.
3. Enter your message text. *See "Enter text"*  
For sending as a text message, skip to step 5. For attaching multimedia, continue with step 4.
4. Press **<Options>** → **Add multimedia** and add an item.
5. Press the Confirm key to send the message.

To view text or multimedia messages

1. In Menu mode, select **Messages** → **Inbox**.
2. Select a text or multimedia message.

To use the Bluetooth messenger

1. In Menu mode, select **BT msgr**.
2. Press the Confirm key.
3. Press **<Yes>** to turn on the Bluetooth wireless feature (if necessary).
4. Select a device.
5. Enter your message and press the Confirm key.
6. Enter a PIN for the Bluetooth wireless feature or the other device's Bluetooth PIN, and press **<OK>**.  
Alternatively, press **<Yes>** to match the PIN between your phone and the device.
7. Chat with friends and family instantly.

Make fake calls

You can simulate an incoming call when you want to get out of meetings or unwanted conversations.

To activate the fake call feature

In Menu mode, select **Settings** → **Call** → **Fake call** → **Fake call hot key**.

To make a fake call

- In Idle mode, press and hold the Navigation key down.
- With the keys locked, press the Navigation key down four times.

Activate and send an SOS message

To activate the SOS message

1. In Menu mode, select **Messages** → **Settings** → **SOS messages** → **Sending options**.
2. Press **<Change>** to turn on the SOS message.
3. Scroll down and press the Confirm key to open the recipient list.
4. Press **<Search>** to open your contact list.  
You can also enter phone numbers including a country code (with +) in the recipient list. Skip to step 7.
5. Select a contact.
6. Select a number (if necessary).
7. When you are finished selecting contacts, press the Confirm key to save the recipients.
8. Scroll down and set the number of times to repeat the SOS message.
9. Press **<Back>** → **<Yes>**.

To send an SOS message

1. With the phone locked, press [ ] 4 times.
2. To exit SOS mode, press [ ].

Use the camera

To capture photos

1. In Idle mode, press and hold [ ] to turn on the camera.
2. Aim the lens at the subject and make any adjustments.
3. Press the Confirm key or [ ] to take a photo.

To view photos

In Menu mode, select **My files** → **Images** → a photo file.

To record videos

1. In Idle mode, press and hold [ ] to turn on the camera.
2. Press [ **1** ] to switch to the camcorder.
3. Aim the lens at the subject and make any adjustments.

4. Press the Confirm key or [ ] to start recording.
5. Press the Confirm key, **<Stop>**, or [ ] to stop recording.

To view videos

In Menu mode, select **My files** → **Videos** → a video file.

Listen to music

1. In Menu mode, select **Music**.
2. Select a music category → a music file.
3. Control playback with the following keys:

Key	Function
Confirm	Pause or resume playback
Navigation	• Left: Restart playback; Skip backward (press within 3 seconds); Scan backward in a file (press and hold) • Right: Skip forward; Scan forward in a file (press and hold) • Up/Down: Adjust the volume

Listen to the FM radio

1. Plug a headset into the phone.
2. In Menu mode, select **Apps** → **FM radio**.
3. Press the Confirm key to turn on the FM radio.
4. Press **<Yes>** to start automatic tuning.  
The radio scans and saves available stations automatically.

- The first time you turn on the FM radio, you will be prompted to start automatic tuning.

5. Control the FM radio with the following keys:

Key	Function
Confirm	Turn the FM radio on or off
Navigation	• Left/Right: Fine-tune the frequency; Search for an available radio station (press and hold) • Up/Down: Adjust the volume

Browse the web

1. In Menu mode, select **Internet**.
2. Navigate web pages.  
To bookmark your favourite web pages, press **<Options>** → **Add to Bookmarks**.

Access community websites

1. In Menu mode, select **Communities** → a website.
2. Press **<Yes>**.
3. Share photos, videos, or messages with friends and family.

Use an instant messenger

1. In Menu mode, select **IM** → an instant messenger.
2. Enter your user name and password, and then press **<Sign in>**.
3. Send and receive instant messages to friends and family.

SAMSUNG ELECTRONICS

**Declaration of Conformity (R&TTE)**

*We,* **Samsung Electronics**

declare under our sole responsibility that the product

**GSM Mobile Phone : GT-E2222**

to which this declaration relates, is in conformity with the following standards and/or other normative documents.

SAFETY	EN 60950-1 : 2006+A11:2009
SAR	EN 50380 : 2001/AC 2006 EN 62209-1 : 2006
EMC	EN 301 489-01 V1.8.1 (04-2008) EN 301 489-07 V1.3.1 (11-2005) EN 301 489-17 V2.1.1 (05-2009)
RADIO	EN 301 511 V9.0.2 (03-2003) EN 300 328 V1.7.1 (10-2006)

We hereby declare that [all essential radio test suites have been carried out and that] the above named product is in conformity to all the essential requirements of Directive 1999/5/EC.

The conformity assessment procedure referred to in Article 10 and detailed in Annex[IV] of Directive 1999/5/EC has been followed with the involvement of the following Notified Body(ies):

BABT, Forsyth House,  
Churchfield Road,  
Walton-on-Thames,  
Surrey, KT12 2TD, UK\*  
Identification mark: 0168

**C E 0168**

The technical documentation kept at :  
Samsung Electronics QA Lab.

which will be made available upon request.  
(Representative in the EU)

Samsung Electronics Euro QA Lab.  
Blackbushe Business Park, Saxony Way,  
Yateley, Hampshire, GU46 6GG, UK\*

2011.04.05

Joong-Hoon Choi / Lab Manager  
(name and signature of authorised person)

\* It is not the address of Samsung Service Centre. For the address or the phone number of Samsung Service Centre, see the warranty card or contact the retailer where you purchased your product.