

safety and usage information

Comply with the following precautions to prevent danger or legal actions and ensure peak performance from your mobile phone.

Safety warnings

Keep your phone away from small children and pets
Keep your phone and all accessories out of reach from small children and pets. Small parts may cause choking or serious injury if swallowed.

Protect your hearing
Listening to a headset at high volumes can damage your hearing. Use only the minimum volume setting necessary to hear your conversation or music.

Install mobile phones and equipment with caution
Ensure that any mobile phones or related equipment installed in your vehicle are securely mounted. Avoid placing your phone and accessories near or in an air bag deployment area. Improperly installed wireless equipment can cause serious injury when air bags inflate rapidly.

Handle and dispose of batteries and chargers with care
• Use only Samsung-approved batteries and chargers specifically designed for your phone. Incompatible batteries and chargers can cause serious injuries or damage to your phone.
• Never dispose of batteries or phones in a fire. Follow all local regulations when disposing used batteries or phones.
• Never place batteries or phones on or in heating devices, such as microwave ovens, stoves, or radiators. Batteries may explode when overheated.
• Never crush or puncture the battery. Avoid exposing the battery to high external pressure, which can lead to an internal short circuit and overheating.

Avoid interference with pacemakers
Maintain a minimum of 15 cm (6 inches) between mobile phones and pacemakers to avoid potential interference, as recommended by manufacturers and the independent research group, Wireless Technology Research. If you have any reason to suspect that your phone is interfering with a pacemaker or other medical device, turn off the phone immediately and contact the manufacturer of the pacemaker or medical device for guidance.

Turn off the phone in potentially explosive environments
Do not use your phone at refueling points (service stations) or near fuels or chemicals. Turn off your phone whenever directed by warning signs or instructions. Your phone could cause explosions or fire in and around fuel or chemical storage, transfer areas and blasting areas. Do not store or carry flammable liquids, gases, or explosive materials in the same compartment as the phone, its parts, or accessories.

Reduce the risk of repetitive motion injuries
When sending text messages or playing games on your phone, hold the phone with a relaxed grip, press the keys lightly, use special features that reduce the number of keys you have to press (such as templates and predictive text), and take frequent breaks.

Do not use the phone if the screen is cracked or broken
Broken glass or acrylic could cause injury to your hand and face. Bring the phone to a Samsung service centre to replace the screen. Damage caused by careless handling will void your manufacturer's warranty.

Safety precautions

Drive safely at all times
Avoid using your phone while driving and obey all regulations that restrict the use of mobile phones while driving. Use hands-free accessories to increase your safety when possible.

Follow all safety warnings and regulations
Comply with any regulations that restrict the use of a mobile phone in a certain area.

Use only Samsung-approved accessories
Using incompatible accessories may damage your phone or cause injury.

Turn off the phone near medical equipment
Your phone can interfere with medical equipment in hospitals or health care facilities. Follow all regulations, posted warnings, and directions from medical personnel.

Turn off the phone or disable the wireless functions when in an aircraft
Your phone can cause interference with aircraft equipment. Follow all airline regulations and turn off your phone or switch to a mode that disables the wireless functions when directed by airline personnel.

Protect batteries and chargers from damage
• Avoid exposing batteries to very cold or very hot temperatures (below 0° C/32° F or above 45° C/ 113° F). Extreme temperatures can reduce the charging capacity and life of your batteries.
• Prevent batteries from contacting metal objects, as this can create a connection between the + and – terminals of your batteries and lead to temporary or permanent battery damage.
• Never use a damaged charger or battery.

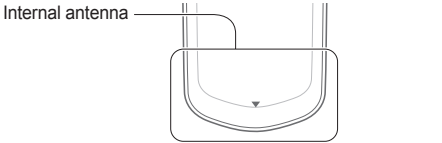
Handle your phone carefully and sensibly
• Do not disassemble your phone due to a risk of electric shock.
• Do not allow your phone to get wet—liquids can cause serious damage and will change the colour of the label that indicates water damage inside the phone. Do not handle your phone with wet hands. Water damage to your phone can void your manufacturer's warranty.
• Avoid using or storing your phone in dusty, dirty areas to prevent damage to moving parts.

• Your phone is a complex electronic device—protect it from impacts and rough handling to avoid serious damage.
• Do not paint your phone, as paint can clog moving parts and prevent proper operation.
• If your phone has a camera flash or light, avoid using it close to the eyes of children or animals.
• Your phone may be damaged by exposure to magnetic fields. Do not use carrying cases or accessories with magnetic closures or allow your phone to come in contact with magnetic fields for extended periods of time.

Avoid interference with other electronic devices
Your phone emits radio frequency (RF) signals that may interfere with unshielded or improperly shielded electronic equipment, such as pacemakers, hearing aids, medical devices, and other electronic devices in homes or vehicles. Consult the manufacturers of your electronic devices to solve any interference problems you experience.

Important usage information

Use your phone in the normal position
Avoid contact with your phone's internal antenna.



Allow only qualified personnel to service your phone
Allowing non-qualified personnel to service your phone may result in damage to your phone and will void your warranty.

Ensure maximum battery and charger life
• Avoid charging batteries for more than a week, as overcharging may shorten battery life.
• Over time, unused batteries will discharge and must be recharged before use.
• Disconnect chargers from power sources when not in use.
• Use batteries only for their intended purpose.

Handle SIM cards and memory cards with care
• Do not remove a card while the phone is transferring or accessing information, as this could result in loss of data and/or damage to the card or phone.
• Protect cards from strong shocks, static electricity, and electrical noise from other devices.
• Frequent writing and erasing will shorten the life span of memory cards.
• Do not touch gold-colored contacts or terminals with your fingers or metal objects. If dirty, wipe the card with a soft cloth.

Ensure access to emergency services
Emergency calls from your phone may not be possible in some areas or circumstances. Before traveling in remote or areas without signal coverage, plan an alternate method of contacting emergency services personnel.

Specific Absorption Rate (SAR) certification information
Your phone conforms to European Union (EU) standards that limit human exposure to radio frequency (RF) energy emitted by radio and telecommunications equipment. These standards prevent the sale of mobile phones that exceed a maximum exposure level (known as the Specific Absorption Rate, or SAR) of 2.0 watts per kilogram.
During testing, the maximum SAR recorded for this model was 0.723 watts per kilogram. In normal use, the actual SAR is likely to be much lower, as the phone has been designed to emit only the RF energy necessary to transmit a signal to the nearest base station. By automatically emitting lower levels when possible, your phone reduces your overall exposure to RF energy. For more information about the SAR and related EU standards, visit the Samsung mobile phone website.

Correct disposal of this product
(Waste Electrical & Electronic Equipment)
(Applicable in the European Union and other European countries with separate collection systems)
This marking on the product, accessories or literature indicates that the product and its electronic accessories (e.g. charger, headset, USB cable) should not be disposed of with other household waste at the end of their working life. To prevent possible harm to the environment or human health from uncontrolled waste disposal, please separate these items from other types of waste and recycle them responsibly to promote the sustainable reuse of material resources.
Household users should contact either the retailer where they purchased this product, or their local government office, for details of where and how they can take these items for environmentally safe recycling.
Business users should contact their supplier and check the terms and conditions of the purchase contract. This product and its electronic accessories should not be mixed with other commercial wastes for disposal.

Correct disposal of batteries in this product
(Applicable in the European Union and other European countries with separate battery return systems.)
This marking on the battery, manual or packaging indicates that the batteries in this product should not be disposed of with other household waste at the end of their working life. Where marked, the chemical symbols Hg, Cd or Pb indicate that the battery contains mercury, cadmium or lead above the reference levels in EC Directive 2006/66. If batteries are not properly disposed of, these substances can cause harm to human health or the environment.
To protect natural resources and to promote material reuse, please separate batteries from other types of waste and recycle them through your local, free battery return system.

Open source Announcement
Some software components of this product incorporate source code covered under the BSD License.
And this software is based in part on the work of the Independent JPEG Group.
This product includes software developed by the University of California, Berkeley.

Component	License
Independent JPEG Group's software	JPEG License
Newlib	BSD

Copyright (c) 1990 The Regents of the University of California.
All rights reserved.

Redistribution and use in source and binary forms are permitted provided that the above copyright notice and this paragraph are duplicated in all such forms and that any documentation, advertising materials, and other materials related to such distribution and use acknowledge that the software was developed by the University of California, Berkeley. The name of the University may not be used to endorse or promote products derived from this software without specific prior written permission.

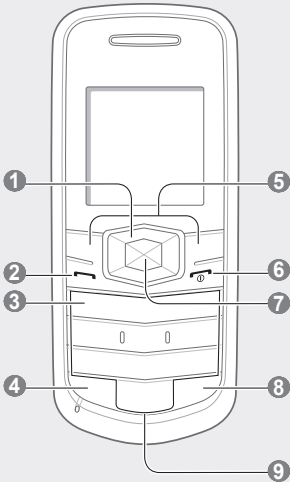
THIS SOFTWARE IS PROVIDED ``AS IS'' AND WITHOUT ANY EXPRESS OR IMPLIED WARRANTIES, INCLUDING, WITHOUT LIMITATION, THE IMPLIED WARRANTIES OF MERCHANTABILITY AND FITNESS FOR A PARTICULAR PURPOSE.

Copyright (c) 1990, 2006 The Regents of the University of California.
All rights reserved.

This code is derived from software contributed to Berkeley by Chris Torek.
Redistribution and use in source and binary forms, with or without modification, are permitted provided that the following conditions are met:
1. Redistributions of source code must retain the above copyright notice, this list of conditions and the following disclaimer.
2. Redistributions in binary form must reproduce the above copyright notice, this list of conditions and the following disclaimer in the documentation and/or other materials provided with the distribution.
3. Neither the name of the University nor the names of its contributors may be used to endorse or promote products derived from this software without specific prior written permission.

THIS SOFTWARE IS PROVIDED BY THE REGENTS AND CONTRIBUTORS ``AS IS'' AND ANY EXPRESS OR IMPLIED WARRANTIES, INCLUDING, BUT NOT LIMITED TO, THE IMPLIED WARRANTIES OF MERCHANTABILITY AND FITNESS FOR A PARTICULAR PURPOSE ARE DISCLAIMED. IN NO EVENT SHALL THE REGENTS OR CONTRIBUTORS BE LIABLE FOR ANY DIRECT, INDIRECT, INCIDENTAL, SPECIAL, EXEMPLARY, OR CONSEQUENTIAL DAMAGES (INCLUDING, BUT NOT LIMITED TO, PROCUREMENT OF SUBSTITUTE GOODS OR SERVICES; LOSS OF USE, DATA, OR PROFITS; OR BUSINESS INTERRUPTION) HOWEVER

CAUSED AND ON ANY THEORY OF LIABILITY, WHETHER IN CONTRACT, STRICT LIABILITY, OR TORT (INCLUDING NEGLIGENCE OR OTHERWISE) ARISING IN ANY WAY OUT OF THE USE OF THIS SOFTWARE, EVEN IF ADVISED OF THE POSSIBILITY OF SUCH DAMAGE.



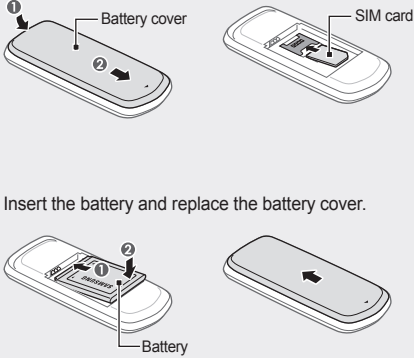
- 1 4-way navigation key**
In Idle mode, access user-defined menus (depending on your service provider, pre-defined menus may differ), activate the torch light (up), and make a fake call (down); In Menu mode, scroll through menu options
► *Activate the torch light*
► *Make fake calls*
- 2 Dial key**
Make or answer a call; In Idle mode, retrieve recently dialed, missed, or received numbers; Send an SOS message
► *Activate and send an SOS message*
- 3 Voice mail service key**
In Idle mode, access voice mails (press and hold)
- 4 Lock key**
In Idle mode, lock or unlock the keypad (press and hold)
- 5 Softkeys**
Perform actions indicated at the bottom of the display
- 6 Power/Menu exit key**
Turn the phone on and off (press and hold); End a call; In Menu mode, cancel input and return to Idle mode
- 7 Confirm key**
In Idle mode, access Menu mode or launch the web browser; In Menu mode, select the highlighted menu option or confirm an input
- 8 Silent profile key**
In Idle mode, activate or deactivate the silent profile (press and hold)
- 9 Alphanumeric keys**

Your phone displays the following status indicators on the top of the screen:

Icon	Description
	Signal strength
	Call in progress
	Call diverting active
	SOS message feature activated
	Roaming (outside of normal service area)
	Alarm activated
	New text message
	New voice mail message
	Normal profile activated
	Silent profile activated
	Battery power level

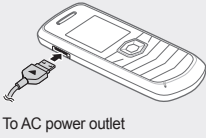
Install the SIM card and battery

1. Remove the battery cover and insert the SIM card.
2. Insert the battery and replace the battery cover.



Charge the battery

1. Plug the supplied travel adapter.



2. When charging is finished, unplug the travel adapter.

Do not remove the battery from the phone before unplugging the travel adapter first. Otherwise, the phone may be damaged.

Instructional icons

	Note: notes, usage tips, or additional information
	Followed by: the order of options or menus you must select to perform a step; for example: In Menu mode, select Messages → Create new message (represents Messages , followed by Create new message)
	Square brackets: phone keys; for example: [] (represents the Power/Menu exit key)
	Angled brackets: softkeys that control different functions at each screen; for example: <OK> (represents the OK softkey)

Turn your phone on or off

- To turn your phone on,
- Press and hold [].
 - Enter your PIN and press **<OK>** (if necessary).
 - When the setup wizard opens, customise your phone as desired following the screen.
- To turn your phone off, repeat step 1 above.

Access menus

- To access your phone's menus,
- In Idle mode, press **<Menu>** to access Menu mode.

You may need to press the Confirm key to access Menu mode depending on your region or service provider.

- Use the Navigation key to scroll to a menu or option.
- Press **<Select>**, **<OK>**, or the Confirm key to confirm the highlighted option.
- Press **<Back>** to move up one level; Press [] to return to Idle mode.

When you access a menu requiring the PIN2, you must enter the PIN2 supplied by the SIM card. For details, contact your service provider.

Samsung is not responsible for any loss of passwords or private information or other damages caused by illegal software.

Make a call

- In Idle mode, enter an area code and a phone number.
- Press [] to dial the number.
- To end the call, press [].

The volume through mono earphones is very low or virtually inaudible. Use stereo earphones only.

Answer a call

- When a call comes in, press [].
- To end the call, press [].

Adjust the volume

- In Menu mode, select **Settings** → **Profiles**.
- Scroll to the phone profile you are using.

If you are using the silent profile, you are not allowed to adjust the volume of the ringtone.

- Press **<Options>** → **Edit**.
- Select **Volume** and scroll to **Call alert**.
- Scroll left or right to adjust the volume level.
- Press **<Save>** → **<Back>**.

To adjust the volume of voice during a call

While a call is in progress, press the Navigation key up or down to adjust the volume.

In noisy environments, you may have difficulty hearing the calls while using the speakerphone feature. For better audio performance, use the normal phone mode.

Change your ringtone

- In Menu mode, select **Settings** → **Profiles**.
 - Scroll to the profile you are using.
 - Press **<Options>** → **Edit**.
 - Select **Call ringtone**.
 - Select a ringtone.
- To switch to another profile, select it from the list.

Call a recently dialled number

- In Idle mode, press [].
- Scroll left or right to a call type.
- Scroll up or down to a number or name.
- Press the Confirm key to view details of the call or [] to dial the number.

Enter text

To change the text input mode

- Press and hold [] to select an input mode. Depending on your region, you may be able to access an input mode for your specific language.
- Press [] to change case.
- Press [] to switch to Symbol mode.

T9 mode

- Press the appropriate alphanumeric keys to enter an entire word.
- When the word displays correctly, press [] to insert a space. If the correct word does not display, press [] to select an alternative word.

ABC mode

Press the appropriate alphanumeric key until the character you want appears on the display.

Number mode

Press the appropriate alphanumeric key to enter a number.

Symbol mode

Press the appropriate alphanumeric key to select a symbol.

- To move the cursor, press the navigation key.
- To delete characters one by one, press **<Clear>**. To delete all of the characters, press and hold **<Clear>**.
- To insert a space between characters, press [].
- To enter punctuation marks, press [].

Add a new contact

Your phone is preset to save contact to the phone memory. To change the memory location, in Menu mode, select **Settings** → **Application** → **Phonebook** → **Save new contacts to** → a memory location.

- In Idle mode, enter a phone number and press **<Options>**.
- Select **Create contact**.
- Select a number type (if necessary).
- Enter contact information.
- Press the Confirm key to add the contact to memory.

Send and view messages

To send a text message

- In Menu mode, select **Messages** → **Create new message**.
- Enter a destination number and scroll down.
- Enter the message text. ► *Enter text*
- Press the Confirm key to send the message.

To view text messages

- In Menu mode, select **Messages** → **Inbox**.
- Select a text message.

Make fake calls

- You can simulate an incoming call when you want to get out of meetings or unwanted conversations.
- To make a fake call,
- Press and hold the Navigation key down in Idle mode.
 - Press the Navigation key down four times when the keys are locked.

Use the mobile tracker 2.0

To activate the mobile tracker

This feature helps track your phone when it is stolen or when someone tries to use your phone using other SIM card, the phone will automatically send the preset tracking message to family or friends. This feature may be unavailable due to certain features supported by your service provider.

- In Menu mode, select **Settings** → **Security** → **Mobile Tracker 2.0**.
- Press the Confirm key to set a phone lock password.
- Enter a new 4-to 8-digit password and press **<OK>**.
- Enter the new password again and press **<OK>**.
- Select **Settings**.
- Enter a new 8-digit password for the mobile tracker and press **<OK>**.
- Enter the new password again and press **<OK>**.
- Scroll left or right to **On**.
- Scroll down and press the Confirm key to open the recipient list.
- Press the Confirm key to open your contact list.
- Scroll to a contact and press the Confirm key.
- Select a number (if necessary).
- Press **<Options>** → **Save** to save the recipients.
- Scroll down and enter the sender's name.

- Press **<Options>** → **Save** → **<Accept>**.

To change the password for the mobile tracker, select **Change Mobile tracker 2.0 Password**.

Activate and send an SOS message

In an emergency, you can send SOS messages to your family or friends for help.

To activate the SOS message

- In Menu mode, select **Messages** → **Settings** → **SOS messages** → **Sending options**.
- Scroll left or right to **On**.
- Scroll down and press the Confirm key to open the recipient list.
- Press the Confirm key to open your contact list.
- Select a contact.
- Select a number (if necessary).
- When you are finished selecting contacts, press **<Options>** → **Save** to save the recipients.
- Scroll down and set the number of times to repeat the SOS message.
- Press **<Save>** → **<Yes>**.

To send an SOS message

- With the keys locked, press [] four times to send an SOS message to preset numbers. The phone switches to SOS mode and sends the preset SOS message.
- To exit SOS mode, press [].

Set and use alarms

To set a new alarm

- In Menu mode, select **Alarms**.
- Select an empty alarm location.
- Set alarm details.
- Press **<Save>**, or press **<Options>** → **Save**.

To stop an alarm

When the alarm sounds,

- Press **<OK>** or the Confirm key to stop the alarm without snooze.
- Press **<OK>** or the Confirm key to stop the alarm with snooze, or press **<Snooze>** to silence the alarm for the snooze period.

To deactivate an alarm

- In Menu mode, select **Alarms**.
- Select the alarm you want to deactivate.