

# Washing Machine

## user manual

imagine the possibilities

Thank you for purchasing this Samsung product.  
To receive more complete service, please register  
your product at

[www.samsung.com/register](http://www.samsung.com/register)



# features of your new samsung washing machine

---

Your new washing machine will change the way you feel about doing laundry. From its super-size capacity to its energy efficiency, the Samsung washing machine has all the features to turn a mundane chore into a pleasure.

- **Baby Care System**

Your Samsung washing machine includes wash programs that adds protection to the clothing of children with sensitive skin.

These programs reduce skin irritation in children by minimizing detergent residue. In addition, these programs classify laundry into various types and the wash is performed according to the laundry characteristics so that children feel refreshingly clean whenever they put on their clothes.

- **Child Lock**

The Child Lock function ensures that curious little hands are kept out of your washing machine.

This safety feature stops your children from playing with the operation of the washing machine, and alerts you when it is activated.

- **Delay End**

Delay a cycle for up to 19 hours in one-hour increments and increase the convenience of using your washing machine especially when you have to go out.

- **Quick Wash**

No time to lose! Less than 30 minutes wash will give you time to run out before it's too late.

Our 29 minute Quick Wash program can be the solution to your busy life. Now you can wash your favourite clothes in only 29 minutes!

- **Hand Wash Program**

Special care can be determined by the appropriate temperature, the gentle wash action and the appropriate amount of water.

- **Ceramic Heater for Durability & Energy Saving (selected models)**

Our truly innovative Ceramic Heater is twice as durable as regular heaters.



That saves you money on repairs. Plus, it eliminates the scale of hard water and save energy.

- **Wide door**

Extra wide door aperture for convenient viewing! Easily add and remove laundry, especially for large sized laundry items such as bedding, towels etc.












This manual contains important information on the installation, use, and care of your new Samsung washing machine. Refer to it for descriptions of the control panel, instructions on how to use the washing machine, and tips for making the most of its state-of-the-art features and functions. The “**Troubleshooting and information codes**” section on page 29 tells you what to do if something goes wrong with your new washing machine.

# safety information

Throughout this manual, you'll see Warning  and Caution  notes. These warnings, cautions, and the important safety instructions that follow do not cover all possible conditions and situations that may occur. It's your responsibility to use common sense, caution, and care when installing, maintaining, and operating your washing machine. Samsung is not liable for damages resulting from improper use.

## IMPORTANT SAFETY SYMBOLS AND PRECAUTIONS

### What the icons and signs in this user manual mean:

 <b>WARNING</b>	Hazards or unsafe practices that may result in <b>severe personal injury or death</b> .
 <b>CAUTION</b>	Hazards or unsafe practices that may result in <b>minor personal injury or property damage</b> .
 <b>CAUTION</b>	To reduce the risk of fire, explosion, electric shock, or personal injury when using your washing machine, follow these basic safety precautions:
	Do NOT attempt.
	Do NOT disassemble.
	Do NOT touch.
	Follow directions explicitly.
	Unplug the power plug from the wall socket.
	Make sure the machine is grounded to prevent electric shock.
	Call the service center for help.
	Notice

**These warning signs are here to prevent injury to you and others.**

**Please follow them explicitly.**

**After reading this section, keep it in a safe place for future reference.**

 Read all instructions before using the appliance.

As with any equipment using electricity and moving parts, potential hazards exist. To safely operate this appliance, become familiar with its operation and exercise care when using it.

Install and store your washing machine inside, away from exposure to weather.

Install and level your washing machine on a floor that can support its weight.

 Your washing machine must be properly grounded. Never plug it into an ungrounded outlet.



To reduce the risk of fire or explosion:

- Do not wash items that have been washed, soaked, or treated with gasoline, dry cleaning solvents, or other flammable or explosive substances. They give off vapors that could ignite or explode. Rinse by hand any material that has been exposed to cleaning solvent or other flammable liquids or solids before putting in your washing machine. Be sure that all traces of such liquids, solids, and fumes have been removed. Dangerous substances include acetone, denatured alcohol, gasoline, kerosene, certain liquid household cleaners and spot removers, turpentine, waxes, and wax removers.
- Do not put gasoline, dry cleaning solvents, or other flammable or explosive substances into the washing machine.
- Under certain conditions, hydrogen gas may be produced in a hot water system—such as your hot water heater -- that has not been used for two weeks or more. **HYDROGEN GAS IS EXPLOSIVE.** If your hot water system has not been used for two weeks or more, turn on all hot water taps in your home, and let the water flow for several minutes before using your washing machine. This will release any hydrogen gas build-up. Since hydrogen gas is flammable, do not smoke or light an open flame during this time.

Ventilate immediately without touching the power plug if there is a gas leak.



Unplug the power cord before servicing your washing machine.

Before each wash, empty the pockets of your laundry. Small, irregularly shaped hard objects, such as coins, knives, pins, and paperclips could damage your washing machine. Do not wash clothing with large buckles, buttons, or other heavy metal metal.

Do not open the door of the washing machine if you can still see water. Check that the water has drained before opening the door.



Do not repair, replace, or service any part of your washing machine yourself unless you fully understand the recommended user-repair instructions and have the skills to carry them out. Work done by an unauthorized person may void your warranty.

Connect the washing machine to the water mains using the new set of hoses. Do not reuse the old set of hoses.

Water inlet hoses deteriorate over time. Check the hoses periodically for bulges, kinks, cuts, wear, and leaks, and replace them as needed and at least every five years.

All packaging and shipping bolts must be removed before the appliance is used. Serious damage may occur if they are not removed. See page 12 “Removing the shipping bolts”.



Before washing clothes for the first time, you must run a complete cycle without clothes. See “Washing for the first time”.

# safety information

The appliance is designed for home use only.



Make sure that water and electrical connections are made by qualified technicians, observing the user manual (see “Installing the washing machine”) and local safety regulations.



Before cleaning or carrying out maintenance, unplug the appliance from the electrical outlet.

Always unplug the appliance and turn off the water after use.

Make sure that the pockets of all clothing to be washed are empty.

Hard, sharp objects, such as coins, safety pins, nails, screws, or stones can cause extensive damage to the appliance.

Never allow pets and children to play on or in the appliance. It may cause injury or suffocate them.

The glass door becomes very hot during the washing cycle. Never touch on the glass door while it is in use.



Do not attempt to repair the appliance yourself. Repairs made by inexperienced or unqualified persons may cause injury and/or make more serious repairs to the appliance necessary.

If the plug (power supply cord) is damaged, it must be replaced by the manufacturer or its service agent or a similarly qualified person in order to avoid a hazard.

This appliance should only be serviced by our authorized service center, and only rated spare parts should be used.



Do not let children (or pets) play on or in your washing machine. The washing machine door does not open easily from the inside, and children may be seriously injured if trapped inside.



This appliance is not intended for use by persons (including children) with reduced physical, sensory or mental capabilities, or lack of experience and knowledge, unless they have been given supervision or instruction concerning use of the appliance by a person responsible for their safety.

Children should be supervised to ensure that they do not play with the appliance.

To use this appliance safely, the user should become familiar with the instructions for operation of the appliance and always take extra care when using it.

This appliance should be positioned to be accessible to the power plug, the water supply tabs and the drain pipes.



Packing materials can be dangerous to children; keep all packing material (plastic bags, polystyrene, etc.) well out of the reach of children.

Do not use processed water containing oil, cream or lotion, which is usually found in skincare shops or massage clinics.

- Otherwise this will cause the packing to be deformed, which causes a malfunction or water leak.

A stainless washing tub does not usually rust. However if some metal such as a hair pin is left in the tub for an extended time, the tub could rust.

- Do not leave water or bleach containing chlorine in the tub for an extended period of time.
- Do not regularly use or leave water containing iron in the tub for an extended period of time. If rust starts appearing on the surface of the tub, apply a cleansing agent (neutral) to the surface and use a sponge or soft cloth to clean it. (Under no circumstances use a metal brush)

For washing machines with ventilation openings in the base, ensure that the opening is not obstructed by carpet or any other obstacles.

Use the new hose-sets and old hose-sets should not be reused.

# contents

## SETTING UP YOUR WASHING MACHINE

9

- 9 Checking the parts
- 10 Meeting installation requirements
  - 10 Electrical supply and grounding
  - 10 Water Supply
  - 11 Drain
  - 11 Flooring
  - 11 Surrounding temperature
  - 11 Alcove or closet installation
- 11 Installing your washing machine

## WASHING A LOAD OF LAUNDRY

17

- 17 Washing for the first time
- 17 Basic instructions
- 18 Using the control panel
  - 20 Child lock
  - 20 Delay end
  - 21 Washing clothes using the cycle selector
  - 22 Washing clothes manually
- 22 Laundry guidelines
- 24 Detergent and additives information
  - 24 Which detergent to use
  - 24 Detergent drawer

## CLEANING AND MAINTAINING YOUR WASHING MACHINE

25

- 25 Draining the washing machine in an emergency
- 25 Cleaning the exterior
- 26 Cleaning the detergent drawer and drawer recess
- 27 Cleaning the debris filter
- 27 Cleaning the water hose mesh filter
- 28 Repairing a frozen washing machine
- 28 Storing your washing machine

## TROUBLESHOOTING AND INFORMATION CODES

29

- 29 Check these points if your washing machine...
- 30 Information codes

## CYCLE CHART

31

- 31 Cycle chart

## APPENDIX

32

- 32 Fabric care chart
- 32 Protecting the environment
- 32 Declaration of conformity
- 33 Specifications

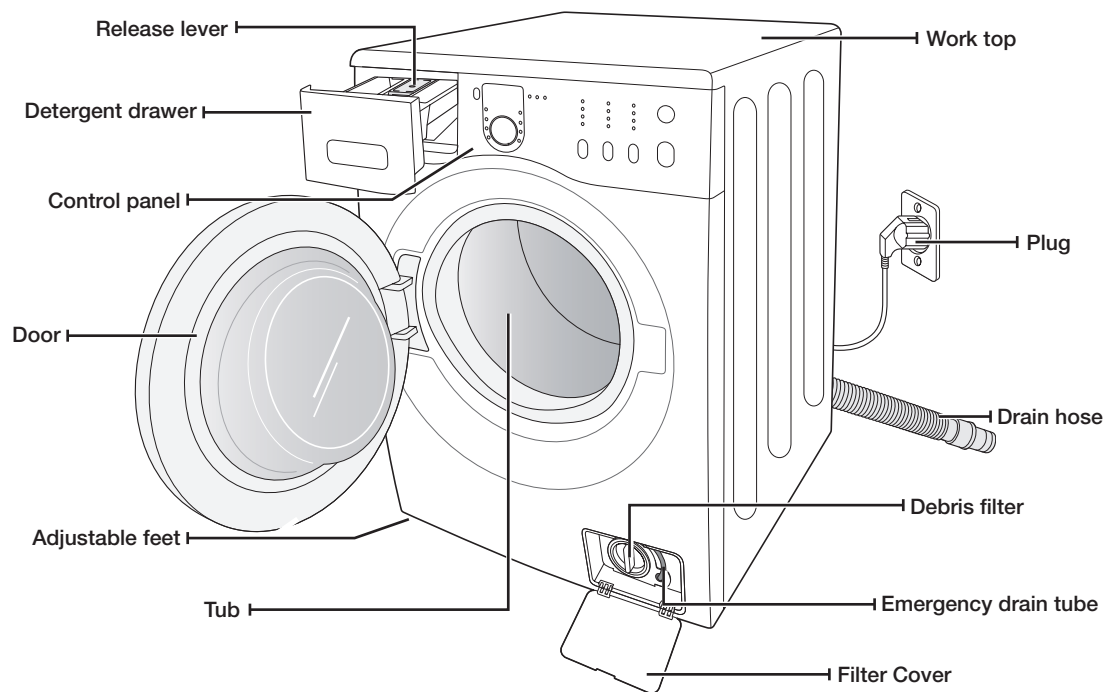


# setting up your washing machine

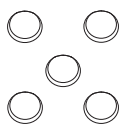
Be sure to have your installer follow these instructions closely so that your new washing machine works properly and so that you're not at risk of injury when doing laundry.

## CHECKING THE PARTS

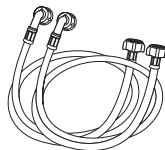
Carefully unpack your washing machine, and make sure you've received all of the parts shown below. If your washing machine was damaged during shipping, or if you do not have all of the parts, contact Samsung Customer Service or your Samsung dealer.



Spanner



Bolt hole covers



Water supply hose



Hose guide



Cap fixer

# setting up your washing machine

## MEETING INSTALLATION REQUIREMENTS

### Electrical supply and grounding

To prevent unnecessary risk of fire, electrical shock, or personal injury, all wiring and grounding must be done in accordance with the National Electrical Code ANSI/FNPA, No. 70 Latest Revision and local codes and ordinances. It is the personal responsibility of the appliance owner to provide adequate electrical service for this appliance.



Never use an extension cord.

**WARNING** Use only the power cord that comes with your washing machine.

When preparing for installation, ensure that your power supply offers:

- 220V~240V 50Hz 15 AMP fuse or circuit breaker
- Individual branch circuit serving only your washing machine

Your washing machine must be grounded. If your washing machine malfunctions or breaks down, grounding will reduce the risk of electric shock by providing a path of least resistance for the electric current.

Your washing machine comes with a power cord having a three-prong grounding plug for use in a properly installed and grounded outlet.



Never connect the ground wire to plastic plumbing lines, gas lines, or hot water pipes.

Improperly connecting the equipment-grounding conductor can result electrical shock.

Check with a qualified electrician or serviceman if you are unsure if the washing machine is properly grounded. Do not modify the plug provided with the washing machine. If it does not fit the outlet, have a proper outlet installed by a qualified electrician.

### Water Supply

Your washing machine will fill properly when your water pressure is 50 kPa ~ 800 kPa. Water pressure less than 50 kPa may cause water valve failure, not allowing the water valve to shut off completely. Or, it may take the washing machine longer to fill than what the controls allow, resulting in your washing machine turning off. (A fill-time limit, designed to prevent overflows/flooding if an internal hose becomes loose, is built into the controls.)

The water taps must be within 4 feet (122cm) of the back of your washing machine for the provided inlet hoses provided to reach your washing machine.



Most plumbing supply stores sell inlet hoses of various lengths up to 10 feet (305cm) long.

You can reduce the risk of leaks and water damage by:

- Making water taps easily accessible.
- Turning off taps when the washing machine is not in use.
- Periodically checking for leaks at water inlet hose fittings.



**WARNING** Before using your washing machine for the first time, check all connections at the water valve and taps for leaks.

## Drain

Samsung recommends a standpipe height of 18 in (46 cm). The drain hose must be routed through the drain hose clip to the standpipe. The standpipe must be large enough to accept the outside diameter of the drain hose. The drain hose is attached at the factory.

## Flooring

For best performance, your washing machine must be installed on a solidly constructed floor. Wood floors may need to be reinforced to minimize vibration and/or unbalanced loads. Carpeting and soft tile surfaces are contributing factors to vibrations and the tendency for your washing machine to move slightly during the spin cycle.

Never install your washing machine on a platform or poorly supported structure.

## Surrounding temperature

Do not install your washing machine in areas where water may freeze, since your washing machine always retains some water in its water valve, pump, and hose areas. Frozen water in the lines can cause damage to belts, the pump, and other components.

## Alcove or closet installation

To operate safely and properly, your new washing machine requires minimum clearances of:

Sides – 25 mm

Rear – 51 mm

Top – 25 mm

Front – 465 mm

If both the washing machine and a dryer are installed together, the front of the alcove or closet must have at least 465 mm unobstructed air opening. Your washing machine alone does not require a specific air opening.

# INSTALLING YOUR WASHING MACHINE

## STEP 1

### Selecting a location



Before you install the washing machine, make sure the location:

- Has a hard, level surface without carpeting or flooring that may obstruct ventilation
- Is away from direct sunlight
- Has adequate ventilation
- Will not be freezing (below 32 °F or 0 °C)
- Is away from heat sources such as oil or gas
- Has enough space so that the washing machine doesn't stand on its power cord

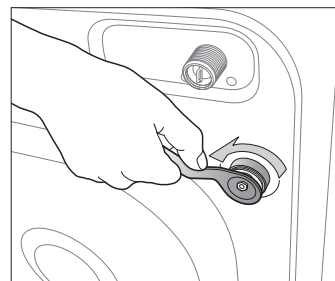
# setting up your washing machine

## STEP 2

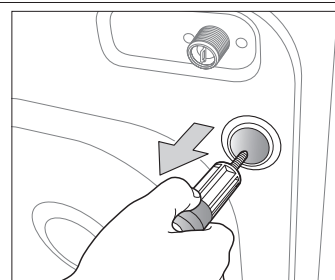
### Removing the shipping bolts

Before installing the washing machine, you must remove the five shipping bolts from the back of the unit.

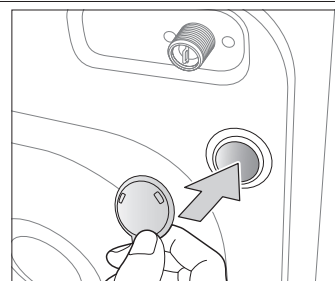
1. Loosen all the bolts with the supplied wrench.



2. Hold the bolt with the spanner and pull it through the wide section of the hole. Repeat for each bolt.



3. Fill the holes with the supplied plastic covers.



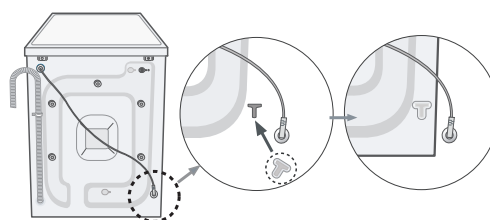
4. Store the shipping bolts away safely in case you have to move the washing machine in the future.



**WARNING** Packaging materials can be dangerous to children; keep all packaging material (plastic bags, polystyrene, etc.) well out of the reach of children.




Insert the cap fixer, (one of the accessories in the vinyl pack), into the hole from which you removed the power cord at the back of the product.



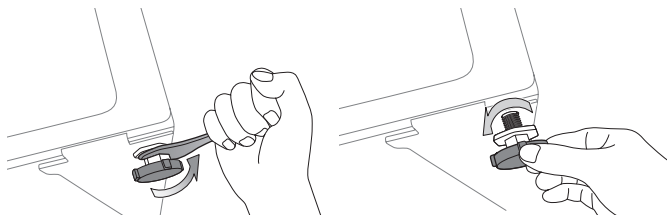
## STEP 3

### Adjusting the levelling feet

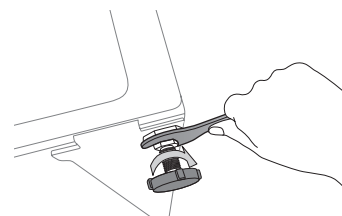
 When installing your washing machine, ensure that the power plug, the water supply and the drain are easily accessible.

1. Slide the washing machine into position.

2. Level your washing machine by turning the levelling feet in and out as necessary by hand.



3. When your washing machine is level, tighten the nuts using the wrench supplied with your washing machine.




## STEP 4

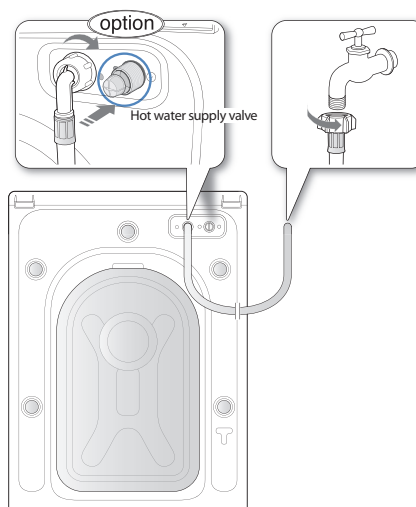
### Connecting the water and drain

#### Connecting the water supply hose

1. Take the L-shaped arm fitting for the cold water supply hose and connect it to the cold water supply intake on the back of the machine. Tighten by hand.

 The water supply hose must be connected to the washing machine at one end and to the water tap at the other. Do not stretch the water supply hose. If the hose is too short, replace the hose with a longer, high pressure hose.

2. Connect the other end of the cold water supply hose to your sink's cold water tap and tighten it by hand. If necessary, you can reposition the water supply hose at the washing machine end by loosening the fitting, rotating the hose, and retightening the fitting.



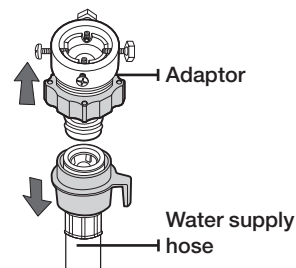
#### For selected models with an additional hot water intake:

1. Take the red L-shaped arm fitting for the hot water supply hose and connect it to the hot water supply intake on the back of the machine. Tighten by hand.
2. Connect the other end of the hot water supply hose to your sink's hot water tap and tighten it by hand.
3. Use a Y-piece if you only want to use cold water.

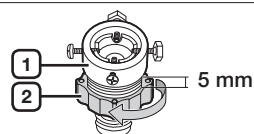
# setting up your washing machine

## Connecting the water supply hose (selected models)

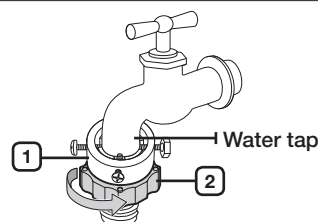
1. Remove the adaptor from the water supply hose.




2. First, using a '+' type screwdriver, loosen the four screws on the adaptor. Next, take the adaptor and turn part (2) following the arrow until there is a 5 mm gap.

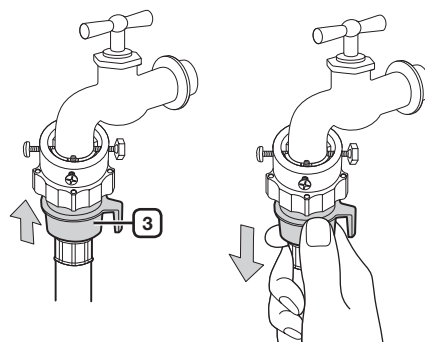


3. Connect the adaptor to the water tap by tightening the screws firmly while lifting the adaptor upwards. Turn part (2) following the arrow and connect (1) and (2).

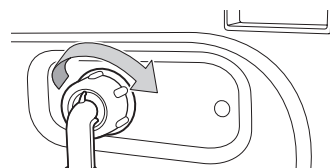


4. Connect the water supply hose to the adaptor. When you release part (3), the hose automatically connects to the adaptor making a 'click' sound.

 After you have connected the water supply hose to the adaptor, ensure that it is connected correctly by pulling the water supply hose downwards.



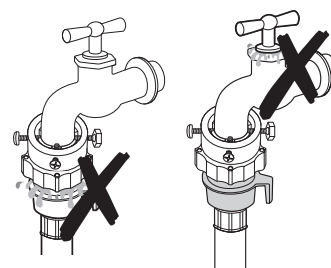
5. Connect the other end of the water supply hose to the inlet water valve at the rear of the washing machine. Screw the hose clockwise all the way in.



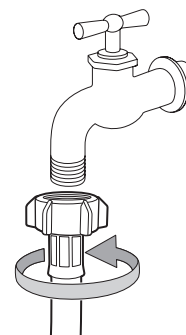
6. Turn on the water supply and ensure that no water leaks from the water valve, tap or adaptor. If there is a water leaks, repeat the previous steps.



Do not use your washing machine if there is a water leak.  
**WARNING** This may cause electric shock or injury.



- If the water tap has a screw type tap, connect the water supply hose to the tap as shown.



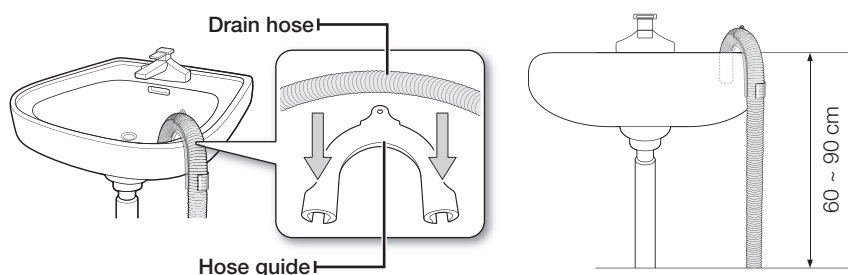
Use the most conventional type of tap for the water supply. In case the tap is square or too big, remove the spacing ring before inserting the tap into the adaptor.

# setting up your washing machine

## Connecting the drain hose

The end of the drain hose can be positioned in three ways:

1. **Over the edge of a wash basin:** The drain hose must be placed at a height of between 60 and 90 cm. To keep the drain hose spout bent, use the supplied plastic hose guide. Secure the guide to the wall with a hook or to the tap with a piece of string to prevent the drain hose from moving.



2. **In a sink drain pipe branch:** The drain pipe branch must be above the sink siphon so that the end of the hose is at least 60 cm above the ground.
3. **In a drain pipe:** We recommend using a 65 cm high vertical pipe; it must be no shorter than 60 cm and no longer than 90 cm.

## STEP 5

### Powering your washing machine


Plug the power cord into a wall sockets, a 230 volt 50 Hz approved electrical outlet protected by a 15-amp fuse or comparable circuit breaker. (For more information on electrical and grounding requirements, see page 10.)




# washing a load of laundry

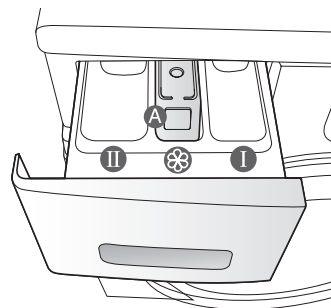
With your new Samsung washing machine, the hardest part of doing laundry will be deciding which load to wash first.

## WASHING FOR THE FIRST TIME

 Before washing laundry for the first time, you must run a complete empty cycle (i.e. no laundry).

1. Press the **Power** button.
2. Add a little detergent to the detergent compartment ② in the detergent drawer.
3. Turn on the water supply to the washing machine.
4. Press the **Start/Pause** button.

 This will remove any water that might be left over in the machine from the manufacturer's test run.




**Compartment ①:** Detergent for prewash, or starch.


**Compartment ②:** Detergent for the main wash, water softener, pre-soaking agent, bleach and stain removal product.

**Compartment ③:** Additives, e.g. fabric softener or former (fill no higher than lower edge (MAX) of "A")

## BASIC INSTRUCTIONS

1. Load your laundry into the washing machine.

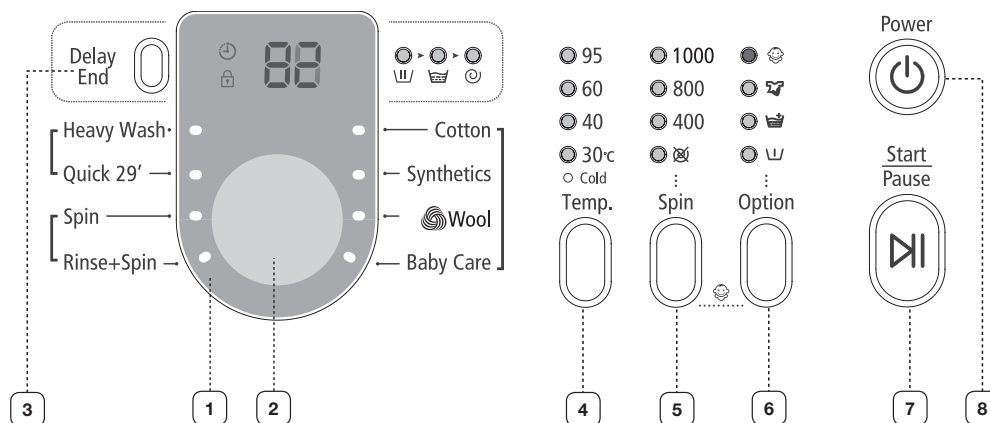
 **WARNING** Do not overload the washing machine. To determine the load capacity for each type of laundry, refer to the chart on page 23.

-  • Make sure that laundry is not caught in the door, as this may cause a water leak.
- Washing detergent may remain in the front rubber part of the washer after a wash cycle. Remove any remaining detergent, as they may cause a water leak.
- Do not wash water-proofed items.

2. Close the door until it latches.
3. Turn the power on.
4. Add detergent and additives to the dispenser drawer.
5. Select the appropriate cycle and options for the load.  
The Wash Indicator light will illuminate and the estimated cycle time will appear in the display.
6. Press the **Start/Pause** button.

# washing a load of laundry

## USING THE CONTROL PANEL




### 1 DIGITAL GRAPHIC DISPLAY

Displays the remaining wash cycle time, all cycle information, and error messages.

### 2 CYCLE SELECTOR

Select the tumble pattern and spin speed for the cycle.

 For detailed information, refer to “Washing clothes using the cycle selector” (see page 21) .

**Cotton** - For averagely or lightly soiled cotton, bed linen, table linen, underwear, towels, shirts, etc.

**Synthetics** - For averagely or lightly soiled blouses, shirts, etc., made of polyester (diolen, trevira), polyamide (perlon, nylon) or other similar blends.

**Wool** - Only for machine-washable wool. A load should be less than 2.0 kg.

- The wool course washes the laundry using gentle cradling actions. During the wash, the gentle cradling and soaking actions are continued to protect the wool fibers from shrinkage / distortion and for a super gentle clean. This stop operation is not a problem.
- Neutral detergent is recommended for wool course, for improved washing results and for improved care of the wool fibers.

**Baby Care** - High temperature wash and extra rinses ensure that no washing powder remains to mark your thin clothes.

**Heavy Wash** - Stained or heavy soiled cottons, bed linen, table linen, underwear, towels, shirts, jeans, etc.

**Quick 29'** - For lightly soiled garments that you require quickly.








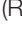


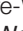


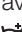

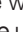

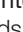
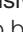
**Spin** - Performs an additional spin cycle to remove more water.

**Rinse + Spin** - Use for a load that needs rinsing only or to add rinse-added fabric softener to a load.

### 3 DELAY END SELECTION BUTTON

Press this button repeatedly to cycle through the available Delay End options (from 3 hours to 19 hours in one hour increments).

The hour displayed indicates the time when the wash cycle will be finished.

<b>4</b> <b>TEMPERATURE SELECTION BUTTON</b>	Press this button repeatedly to cycle through the available water temperature options: (Cold, 30 °C, 40 °C , 60 °C and 95 °C).		
<b>5</b> <b>SPIN SELECTION BUTTON</b>	Press the button repeatedly to cycle through the available speeds for the spin cycle.  <table border="1" data-bbox="543 523 1297 568"> <tr> <td>B1076</td><td>All Lamps Turn Off, , 400, 800, 1000 rpm</td></tr> </table> <p>“No spin ” - The laundry remains in the drum and no spin cycle is performed after the final drain.          “Rinse Hold (All Lamps Turn Off)” -The laundry remains soaking in the final rinse water. Before the laundry can be unloaded, either a Drain or Spin cycle must be performed.</p>	B1076	All Lamps Turn Off,  , 400, 800, 1000 rpm
B1076	All Lamps Turn Off,  , 400, 800, 1000 rpm		
<b>6</b> <b>OPTION SELECTION BUTTON</b>	Press this button repeatedly to cycle through the wash options:  (Pre-Wash) →  (Rinse+) →  (Intensive) →  (Pre-Wash) +  (Rinse+) →  (Pre-Wash) +  (Intensive) →  (Rinse+) +  (Intensive) →  (Pre-Wash) +  (Rinse+) +  (Intensive) → (off)  (Pre-Wash): Press this button to select Pre-Wash. Pre-wash is only available with: Cotton, Synthetics, Baby Care, Heavy Wash.  (Rinse+): Press this button to add additional rinse cycles.  (Intensive): Press this button when the laundry is heavily soiled and needs to be washed intensively. The cycle time is increased for each cycle.		
<b>7</b> <b>START/PAUSE SELECTION BUTTON</b>	Press to pause and restart a cycle.		
<b>8</b> <b>POWER BUTTON</b>	Press it once to turn your washing machine on, press it again to turn your washing machine off. If the washing machine is left on for more than 10 minutes without any buttons being touched, the power automatically turns off.		

# washing a load of laundry

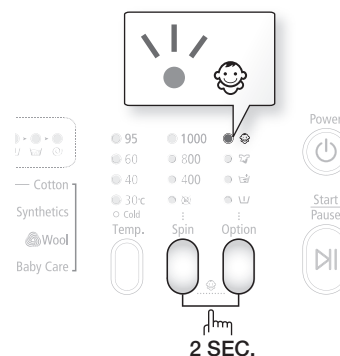
## Child lock

The Child Lock function allows you to lock the buttons so that the wash cycle you've chosen can't be changed.

### Activating/Deactivating

If you want to activate or deactivate the Child Lock function, press the **Spin** and **Option** buttons at the same time for 2 seconds. The "Child Lock" icon will be lit when this feature is activated.

When the Child Lock function is activated, only the **Power** button works. The Child Lock function remains on even after the power is turned on and off or after the disconnecting and reconnecting the power cord.



## Delay end


You can set the washing machine to finish your wash automatically at a later time, choosing a delay of between 3 to 19 hours (in 1 hour increments). The hour displayed indicates the time at which the wash will be finished.

1. Manually or automatically set your washing machine according to the type of laundry you are washing.
2. Press the **Delay End** button repeatedly until the delay time is set.
3. Press the **Start/Pause** button. The "Delay End" icon will be lit, and the clock will begin counting down until it reaches the set time.
4. To cancel a Delay End function, press the **Power** button and then turn the washing machine on again.

## Washing clothes using the cycle selector

Your new washing machine makes washing clothes easy, using Samsung's "Fuzzy Control" automatic control system. When you select a wash program, the machine will set the correct temperature, washing time, and washing speed.

1. Turn on your sink's water tap.
2. Press the **Power** button.
3. Open the door.
4. Load the articles one at a time loosely into the drum, without overfilling it.
5. Close the door.
6. Add detergent, softener, and pre-wash detergent (if necessary) into the appropriate compartments.


 Pre-wash is only available when selecting the Cotton, Synthetics, Baby Care, and Heavy Wash cycles. It is only necessary if your clothing is heavily soiled.

7. Use the **Cycle Selector** to select the appropriate cycle according to the type of material: Cotton, Synthetics, Wool, Baby Care, Heavy Wash, Quick 29'. The relevant indicators will illuminate on the control panel.
8. At this time, you can control the wash temperature, the amount of rinses, the spinning speed, and the delay time by pressing the appropriate option button.
9. Press the **Start/Pause** button and the wash will begin. The process indicator will light up and the remaining time for the cycle will appear in the display.

### Pause Option

Within 5 minutes of starting a wash, it is possible to add/remove laundry items.

1. Press the **Start/Pause** button to unlock the door.

 The door cannot be opened when the water is too HOT or the water level is too HIGH.

2. After closing the door, press the **Start/Pause** button to restart the wash.

### When the cycle is finished:


After the total cycle has finished, the power will turn off automatically.

1. Open the door.
2. Remove laundry.

# washing a load of laundry

## Washing clothes manually

You can wash clothes manually without using the Cycle Selector.

1. Turn the water supply on.
2. Press the **Power** button on the washing machine.
3. Open the door.
4. Load the articles loosely into the drum one at a time, without overfilling it.
5. Close the door.
6. Add detergent and, if necessary, softener or prewash detergent, into the appropriate compartments.
7. Press the **Temp.** button to select the temperature. (Cold, 30 °C, 40 °C, 60 °C, 95 °C)
8. Press the **Option** button to select the Rinse+ to add a rinse time.  
The wash duration is increased accordingly.
9. Press the **Spin** button to select the spin speed.  
The rinse hold function allows you to remove items that are still wet from the washing machine. (  : No Spin (All Lamps Turn Off): Rinse Hold)
10. Press the **Delay End** button repeatedly to cycle through the available Delay End options (from 3 hour to 19 hours in one hour increments). The hour displayed indicates the time at which the wash will be finished.
11. Press the **Start/Pause** button and the machine will begin the cycle.

## LAUNDRY GUIDELINES

Follow these simple guidelines for the cleanest laundry and the most efficient wash.

 Always check the Care label on clothing before washing.

### Sort and wash your laundry according to the following criteria:

- Care Label: Sort laundry into cottons, mixed fibres, synthetics, silks, wools and rayons.
- Colour: Divide whites and colours. Wash new colour items separately.
- Size: Placing items of different sizes in the same load will improve the wash action.
- Sensitivity: Wash delicate items separately, using the Delicate wash cycle for pure, new woollen items, curtains and silk articles. Check the labels on the items you are washing or refer to the fabric care chart in the appendix.

### Emptying pockets

Before each wash, empty all the pockets of your laundry. Small, irregularly shaped hard objects, such as coins, knives, pins, and paperclips could damage your washing machine. Do not wash clothing with large buckles, buttons, or other heavy metal objects.

Metal on clothing may damage your clothing as well as the tub. Turn clothing with buttons and embroidered clothes inside out before washing them. If zips of pants and jackets are open while washing, the spin basket may be damaged. Zips should be closed and fixed with a string before washing.

Clothing with long strings may become entangled with other clothes damaging them. Be sure to fix the strings before starting the wash.

### Prewashing cotton

Your new washing machine, combined with modern detergents, will give perfect washing results, thus saving energy, time, water and detergent. However, if your cotton is particularly dirty, prewash with a protein-based detergent.

### Determining the load capacity

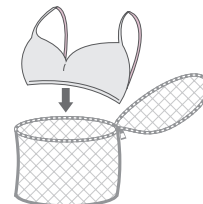
Do not overload the washing machine or your laundry may not wash properly. Use the chart below to determine the load capacity for the type of laundry you are washing.


Fabric Type	Load Capacity
Model	B1076
Cotton - average/lightly soiled - heavily soiled	6.0 kg
Synthetics	2.5 kg
Wool	2.0 kg

- When the laundry is unbalanced ("UE" lights up on the display), redistribute the load. If the laundry is unbalanced, the spin efficiency may be degraded.
- When washing Bedding or Duvets, the wash time may be lengthened or the spin efficiency may be degraded.
- For Bedding or Duvets, the recommended load capacity is 1.8(kg) or less.

### **Make sure to insert brassieres (water washable) into a laundry net (to be purchased additionally).**

- The metal parts of the brassieres may break through the material and damage the laundry. Therefore make sure to place them inside a fine laundry net.
- Small, light clothing such as socks, gloves, stockings and handkerchiefs may become caught around the door. Place them inside a fine laundry net.



 **CAUTION** Do not wash the laundry net by itself without other laundry. This may cause abnormal vibrations that could move the washing machine and cause an accident resulting in injury.


# washing a load of laundry

## DETERGENT AND ADDITIVES INFORMATION

### Which detergent to use

The type of detergent you should use is based on the type of fabric (cotton, synthetics, items, Hand Wash For Wool), colour, wash temperature, and degree of soiling. Always use “low suds” laundry detergent, which is designed for automatic washing machines.

Follow the detergent manufacturer's recommendations based on the weight of the laundry, the degree of soiling, and the hardness of the water in your area. If you do not know how hard your water is, enquire at your local water authority.

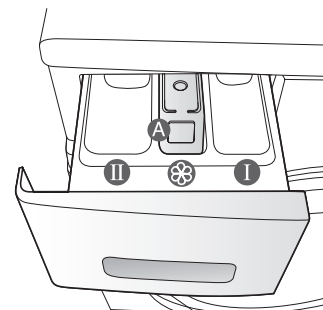
-  Do not use detergent that has hardened or solidified as the detergent may remain in the rinse cycle. It may cause your washing machine to not rinse properly or result in the overflow becoming blocked.


### Detergent drawer

Your washing machine has separate compartments for dispensing detergent and fabric softener. Add all laundry additives to the correct compartment before starting your washing machine.


-  Do NOT open the detergent drawer when your washing machine is running.

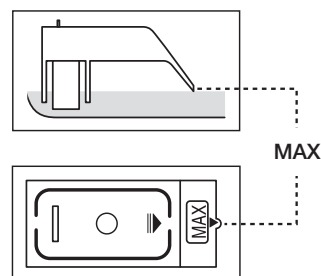
1. Pull out the detergent drawer on the left side of the control panel.
2. Add the recommended amount of laundry detergent directly into the detergent compartment ② before starting your washing machine.
3. Add the recommended amount of fabric softener into the softener compartment ③ if required.
4. When using the Prewash option, add the recommended amount of laundry detergent into the prewash compartment ①.



-  When washing large items do NOT use the following detergent types.

- Tablet and capsule type detergents
- Detergents using a ball and net

-  Concentrated or thick fabric softener and conditioner must be diluted with a little water before being poured into the dispenser (prevents the overflow from becoming blocked.)



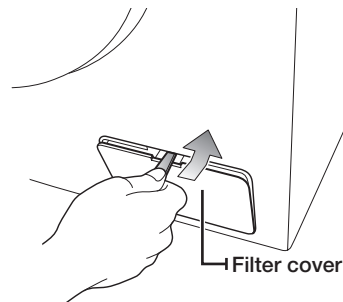


# cleaning and maintaining your washing machine

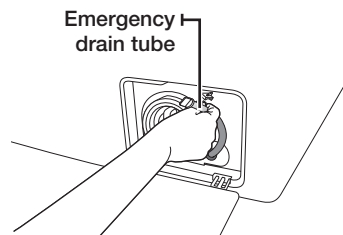
Keeping your washing machine clean improves its performance, wards off unnecessary repairs, and lengthens its life.

## DRAINING THE WASHING MACHINE IN AN EMERGENCY

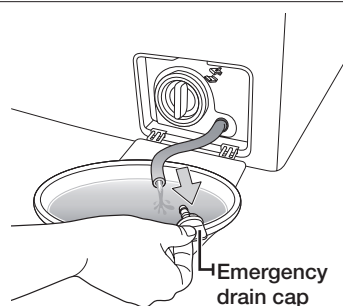
1. Unplug the washing machine from the power supply.
2. Open the filter cover using a coin or a key.



3. Pull forward the emergency drain tube to separate it from the guide hook.



4. Take off the emergency drain cap closing the emergency drain tube.
5. Allow all the water to flow into a bowl.
6. Re-attach the cap to the emergency drain tube and then fix the emergency drain tube to the guide hook.
7. Replace the filter-cover.



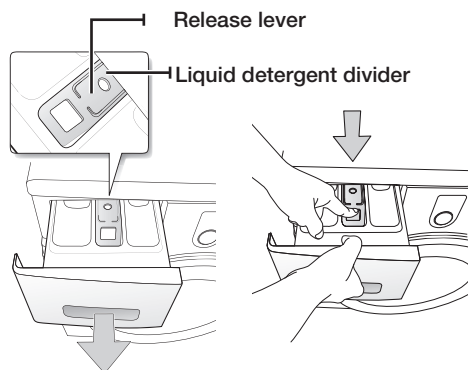
## CLEANING THE EXTERIOR

1. Wipe the washing machine surfaces, including the control panel, with a soft cloth using a nonabrasive household detergent.
2. Use a soft cloth to dry the surfaces.
3. Do not pour water onto the washing machine.

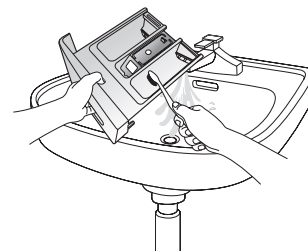
# cleaning and maintaining your washing machine

## CLEANING THE DETERGENT DRAWER AND DRAWER RECESS

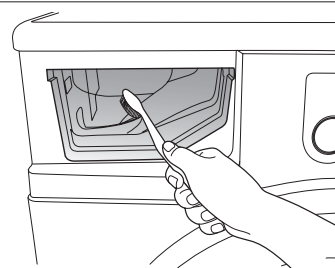
1. Press the release lever on the inside of the detergent drawer and pull the drawer out.
2. Remove the liquid detergent divider from the detergent drawer



3. Wash all parts under running water.



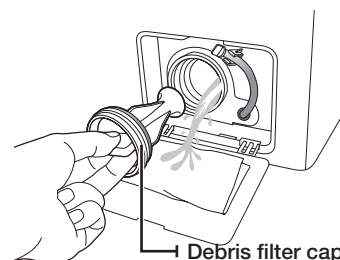
4. Clean the drawer recess with an old toothbrush.
5. Replace the liquid detergent divider by pushing it firmly into the drawer.
6. Push the drawer back into place.
7. To remove any remaining detergent, perform a rinse cycle without any laundry in the drum.



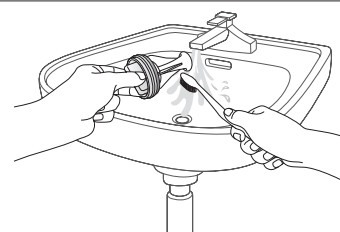
## CLEANING THE DEBRIS FILTER

We recommend cleaning the debris filter 5 or 6 times a year, or when the error message of “5E” is displayed. (Refer to “Draining the washing machine in an emergency” in the previous page.)

1. Open the filter cover by using a key or coin.
2. Unscrew the emergency drain cap by turning it to the left and drain off all the water.
3. Unscrew the debris filter cap.



4. Wash any dirt or other material from the debris filter. Make sure the drain pump propeller behind the debris filter is not blocked.
5. Replace the debris filter cap.
6. Replace the filter cover.



## CLEANING THE WATER HOSE MESH FILTER

You should clean the water hose mesh filter at least once a year, or when the error message of “4E” is displayed:

1. Turn off the water supply to the washing machine.
2. Unscrew the hose from the back of the washing machine. To prevent water from gushing out due to the air pressure in the hose, cover the hose with a cloth.
3. Gently pull out the mesh filter from the end of the hose using a pair of pliers and rinse it under water until clean. Also clean inside and outside the threaded connector.
4. Push the filter back into place.
5. Screw the hose back onto the washing machine.
6. Make sure the connections are watertight and turn on the tap.

# cleaning and maintaining your washing machine

## REPAIRING A FROZEN WASHING MACHINE

If the temperature drops below freezing and your washing machine is frozen:

1. Unplug the washing machine.
2. Pour warm water over the tap to loosen the water supply hose.
3. Remove the water supply hose and soak it in warm water.
4. Pour warm water into the washing machine drum and let it sit for 10 minutes.
5. Reconnect the water supply hose to the water tap and check if the water supply and drain are operating normal.

## STORING YOUR WASHING MACHINE

If you need to store your washing machine for an extended time, it's better to drain and disconnect it. Washing machines can be damaged if water is left in the hoses and internal components before storage.

1. Select the Quick 29' cycle and add bleach to the bleach compartment. Run your washing machine through the cycle without a load.
2. Turn the water taps off and disconnect the inlet hoses.
3. Unplug your washing machine from the electrical outlet, and leave your washing machine door open to allow air to circulate inside the tumbler.



If your washing machine has been stored in below-freezing temperatures, allow time for any leftover water in your washing machine to thaw out before using it.

# troubleshooting and information codes

## CHECK THESE POINTS IF YOUR WASHING MACHINE...

PROBLEM	SOLUTION
Will not start	<ul style="list-style-type: none"><li>• Make sure your washing machine is plugged in.</li><li>• Make sure the door is firmly closed.</li><li>• Make sure the water source tap(s) are turned on.</li><li>• Make sure to press the Start/Pause button.</li></ul>
Has no water or not enough water	<ul style="list-style-type: none"><li>• Turn the water tap on fully.</li><li>• Make sure the water source hose is not frozen.</li><li>• Straighten the water intake hoses.</li><li>• Clean the filter on the water intake hose.</li></ul>
Has detergent remains in the detergent drawer after the wash cycle is complete	<ul style="list-style-type: none"><li>• Make sure your washing machine is running with sufficient water pressure.</li><li>• Make sure the detergent is added to the center of the detergent drawer.</li></ul>
Vibrates or is too noisy	<ul style="list-style-type: none"><li>• Make sure your washing machine is on a level surface. If the surface is not level, adjust the washing machine feet to level the appliance.</li><li>• Make sure that the shipping bolts are removed.</li><li>• Make sure your washing machine is not touching any other object.</li><li>• Make sure the laundry load is balanced.</li></ul>
The washing machine does not drain and/or spin	<ul style="list-style-type: none"><li>• Straighten the drain hose. Eliminate kinked hoses.</li><li>• Make sure the debris filter is not clogged.</li></ul>
Door is locked shut or will not open.	<ul style="list-style-type: none"><li>• Make sure all the water in your drum is drained out.</li><li>• Make sure the door lock light is off. Door lock light will off after drained.</li></ul>

If the problem persists, contact your local Samsung Customer Service.

# troubleshooting and information codes

## INFORMATION CODES

When your washing machine malfunctions, you may see an information code on the display. If that happens, check this table and try the suggested solution before calling Customer Service.

CODE SYMBOL	SOLUTION
dE	<ul style="list-style-type: none"><li>• Close the door.</li></ul>
4E	<ul style="list-style-type: none"><li>• Make sure the source water tap is turned on.</li><li>• Check the water pressure.</li></ul>
5E	<ul style="list-style-type: none"><li>• Clean the debris filter.</li><li>• Make sure the drainage hose is installed correctly.</li></ul>
UE	<ul style="list-style-type: none"><li>• The laundry load is unbalanced. Redistribute the load. If only one item of clothing needs washing, such as a bathrobe or pair of jeans, the final spin result might be unsatisfactory and an "UE" error message will be shown in the display window.</li></ul>
cE/3E	<ul style="list-style-type: none"><li>• Call the after-sales service.</li></ul>

For any codes not listed above, or if the suggested solution doesn't fix the problem, call your Samsung Service Centre or local Samsung dealer.

# cycle chart

## CYCLE CHART

(● user option)

PROGRAM	Max load(kg)	DETERGENT			Max Temp (°C)	Spin Speed(MAX) rpm	Delay end	Cycle time (min)
	B1076	Pre-wash	wash	Softener		B1076		
Cotton	6.0	●	yes	●	95	1000	●	130
Synthetics	2.5	●	yes	●	60	1000	●	91
Wool	2.0	-	yes	●	40	800	●	39
Baby Care	3.0	●	yes	●	95	1000	●	133
Heavy Wash	3.0	●	yes	●	60	1000	●	141
Quick 29'	2.0	-	yes	●	60	1000	●	29

























1. A cycle with a prewash takes approx. 15 minutes longer.
2. The cycle duration data has been measured under the conditions specified in Standard IEC 60456 / EN 60456.
3. Course time in individual homes may differ from the values given in the table due to variations in the pressure and temperature of the water supply, the load and the type of laundry.
4. When the Intensive Wash function is selected, the cycle time is increased for each cycle.

# appendix

## FABRIC CARE CHART

The following symbols provide garment care directions. The care labels include four symbols in this order: washing, bleaching, drying and ironing, and dry cleaning when necessary.

The use of symbols ensures consistency among garment manufacturers of domestic and imported items. Follow the care label directions to maximize garment life and reduce laundering problems.

	Resistant material		Can be ironed at 100 °C max
	Delicate fabric		Do not iron
	Item may be washed at 95 °C		Can be dry cleaned using any solvent
	Item may be washed at 60 °C		Dry clean with perchloride, lighter fuel, pure alcohol or R113 only
	Item may be washed at 40 °C		Dry clean with aviation fuel, pure alcohol or R113 only
	Item may be washed at 30 °C		Do not dry clean
	Item may be hand washed		Dry flat
	Dry clean only		Can be hung to dry
	Can be bleached in cold water		Dry on clothes hanger
	Do not bleach		Tumble dry, normal heat
	Can be ironed at 200 °C max		Tumble dry, reduced heat
	Can be ironed at 150 °C max		Do not tumble dry

## PROTECTING THE ENVIRONMENT

- This appliance is manufactured from recyclable materials. If you decide to dispose of this appliance, please observe local waste disposal regulations. Cut off the power cord so that the appliance cannot be connected to a power source. Remove the door so that animals and small children cannot get trapped inside the appliance.
- Do not exceed the detergent quantities recommended in the detergent manufacturers' instructions.
- Use stain removal products and bleaches before the wash cycle only when strictly necessary.
- Save water and electricity by only washing full loads (the exact amount depends upon the program used).

## DECLARATION OF CONFORMITY

This appliance complies with European safety standards, EC directive 93/68 and EN Standard 60335.



## SPECIFICATIONS

TYPE			FRONT LOADING WASHER	
DIMENSION			B1076	
			W600mm X D550mm X H850mm	
WATER PRESSURE			50 kPa ~ 800 kPa	
WATER VCLUME			48 ℓ	
NET WEIGHT			59 kg	
WASH AND SPIN CAPACITY			6.0 kg	
POWER CONSUMPTION	MODEL		B1076	
	WASHING		220 V	150 W
			240 V	150 W
	WASH AND HEATING		220 V	2000 W
			240 V	2400 W
	SPIN	MODEL	B1076	
		230V	500 W	
	PUMPING		34 W	
PACKAGE WEIGHT	MODEL		B1076	
	PAPER		2.5 kg	
	PLASTIC		1.0 kg	
SPIN REVOLUTIONS	MODEL		B1076	
	rpm		1000	

The appearance and specifications of the product are subject to change without prior notice for purposes of product enhancement.

memo

---

memo

---



Contact SAMSUNG WORLD WIDE

If you have any questions or comments relating to Samsung products, please contact the SAMSUNG customer care center.

Code No. DC68-02583T\_EN