

S4UD-Maker

User Manual

TABLE OF CONTENTS

1. INTRODUCTION	3
1.1. Software Overview	3
1.2. Recommend Specification	3
2. OPERATION	4
2.1. Main Window.....	4
2.1.1. Add file	4
2.1.2. Transfer file	5
2.1.3. Delete file	5
2.1.4. Convert file	6
2.1.5. Output folder	6
2.1.6. Encoding information	7
2.1.7. Encoding complete	8
3. FIGURES / TABLES.....	10

INTRODUCTION

1.1. Software Overview

S4UD-Maker is a PC transcoder program that converts MP4 contents produced using UHD video function on Samsung Galaxy Note3, into a S4UD format that can be played on Samsung UHD TV.

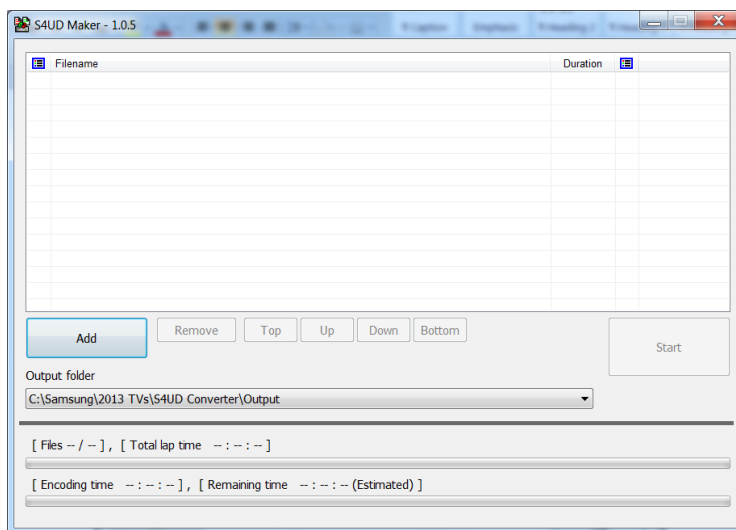
1.2. Recommend Specification

Title	Description
OS	Windows 7
CPU	Intel I7
RAM	More than 4G
Resolution	More than 1024 x 768
Installation Space	100MB
Input	UHD video shot using Galaxy Note 3 UHD (MP4)
Info	If it is not the specified input stream, there could be an error message or it may not be converted.

[Table 0-1. Specification]

2. Operation

2.1. Main window

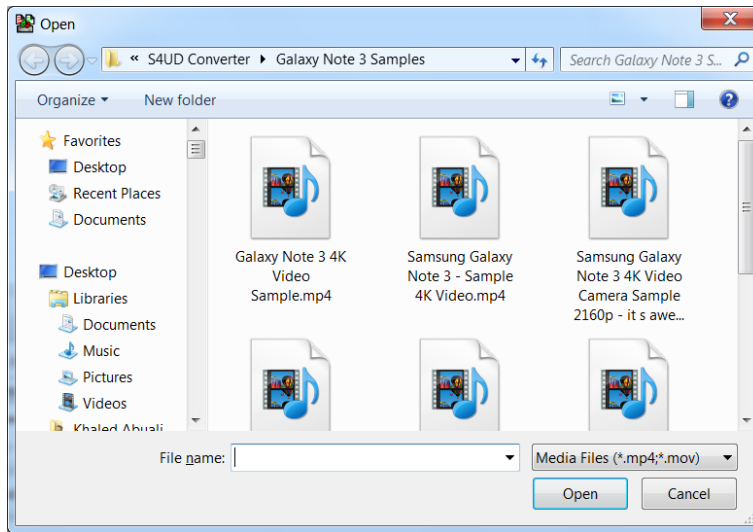


[Figure 2-1. Main Window]

When you execute S4UD Maker, the above Main Window is displayed.

2.1.1. Add file

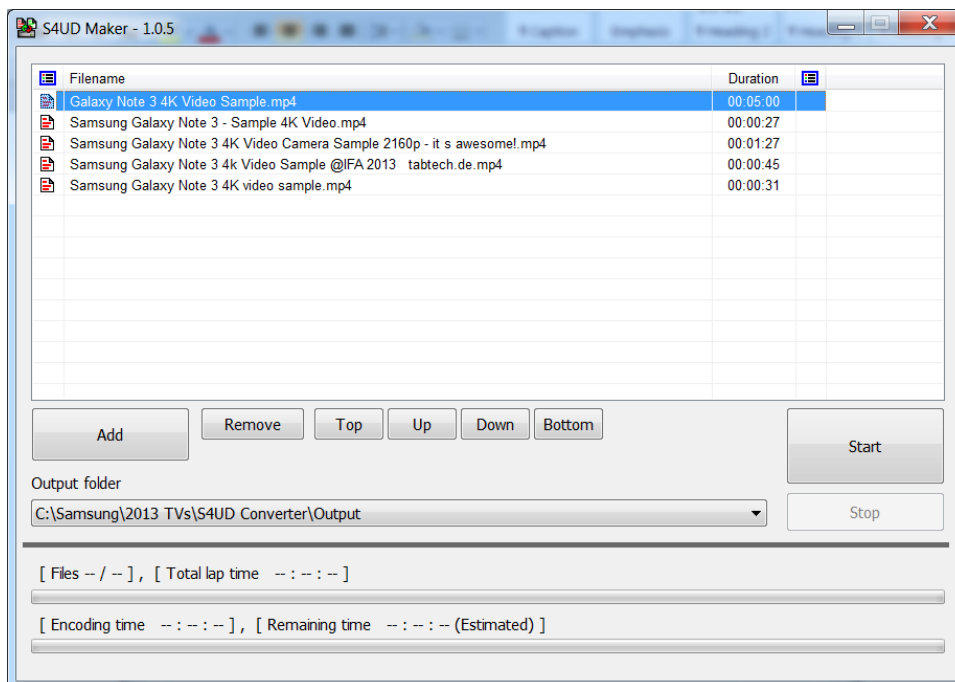
You can bring the file for encoding using an [Add] button. When you press the [Add] button, File Explorer Window is displayed as shown below where you can bring the desired file.



[Figure 2-2. File Explorer Window]

2.1.2. Transfer file

If you add more than one file for encoding, the following buttons (Top button, upper button, lower button and bottom button) are activated. Select a file and then press the button to move it.



[Figure 2-3. File Control]

2.1.3. Delete file

You can delete file using [Delete] button. Select a file you wish to delete and press [Delete]

button to delete it.

Refer to Figure 2-3 File Control

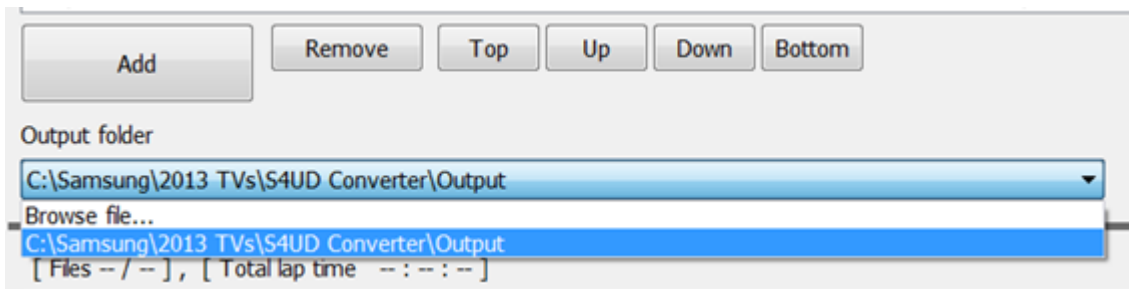
2.1.4. Convert file

Take a file for encoding, press [Start] button and the file will be converted subsequently from the top

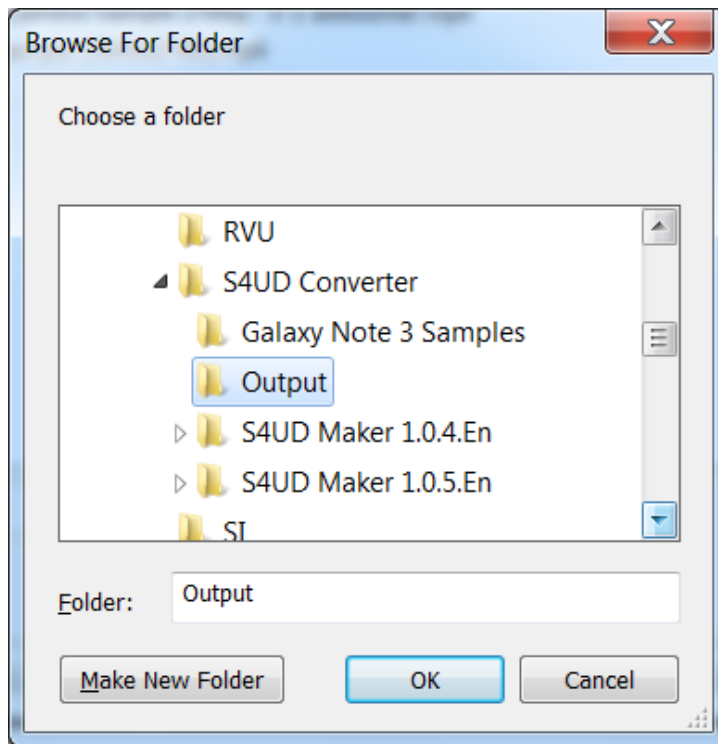
Refer to Figure 2-3. File Control

2.1.5. Output folder

This section shows the current settings of the path in which the converted files are saved. If you want to change the path settings, then select folder search section as shown in the diagram below and you will see a Pull-Down menu. Click on 'Search' and Folder Explorer Window will be displayed.



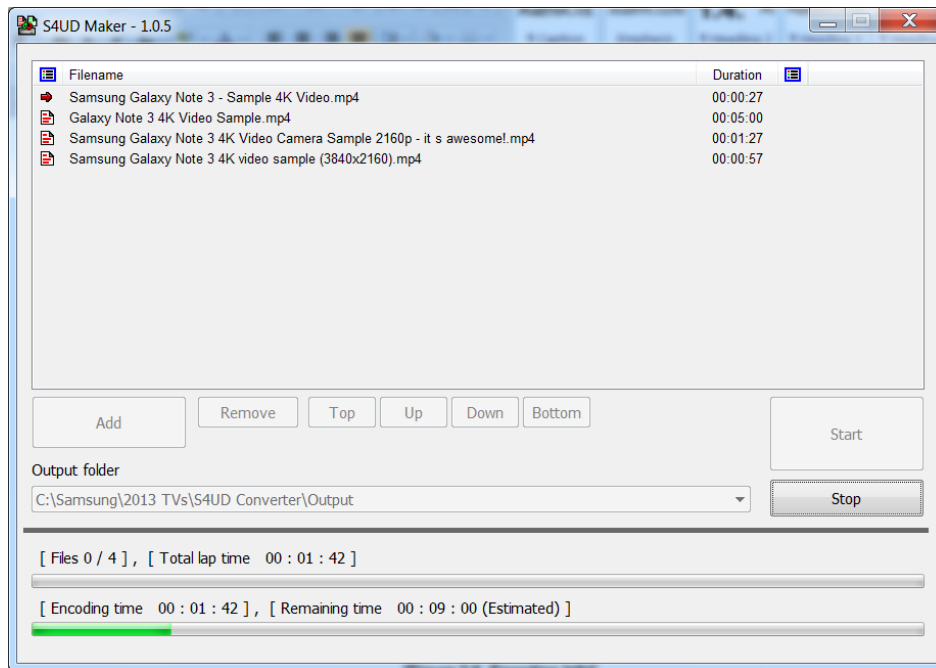
[Figure 2-4. Output Folder]



[Figure 2-5. Folder Explorer Window]

2.1.6. Encoding information

When you convert a file, information as shown in the following diagram is displayed.

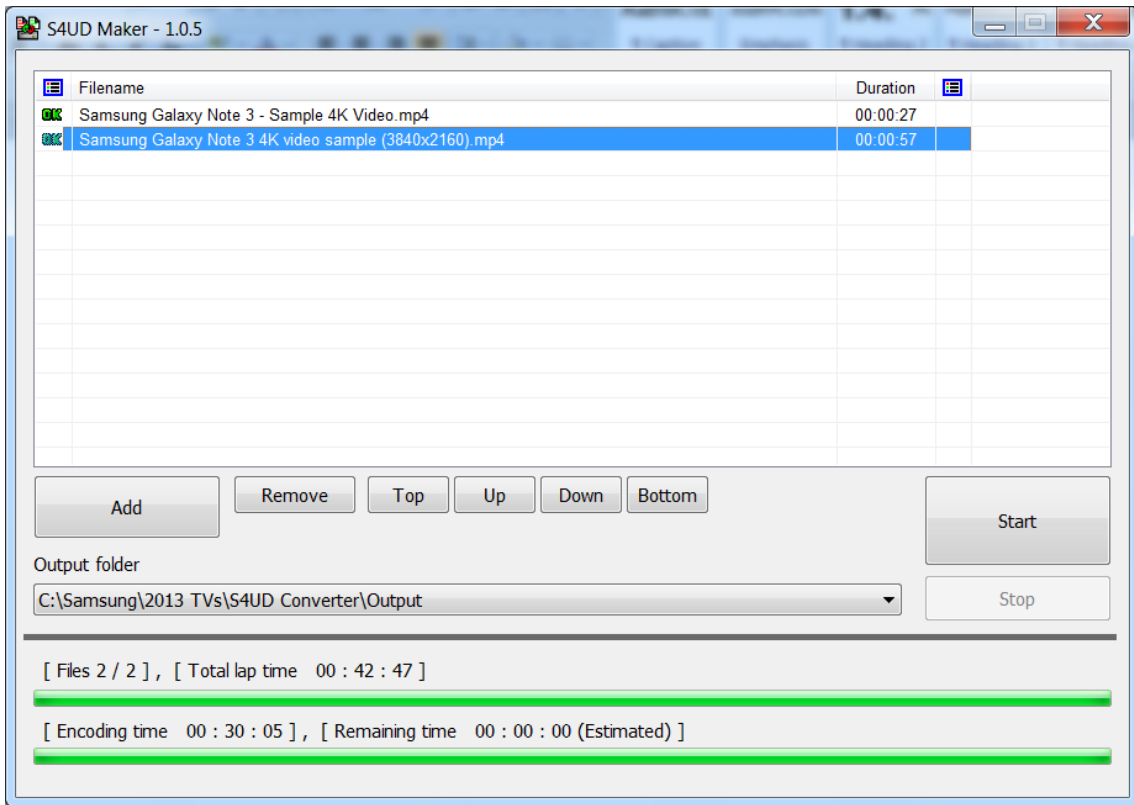


[Figure 2-6. Encoding Info]

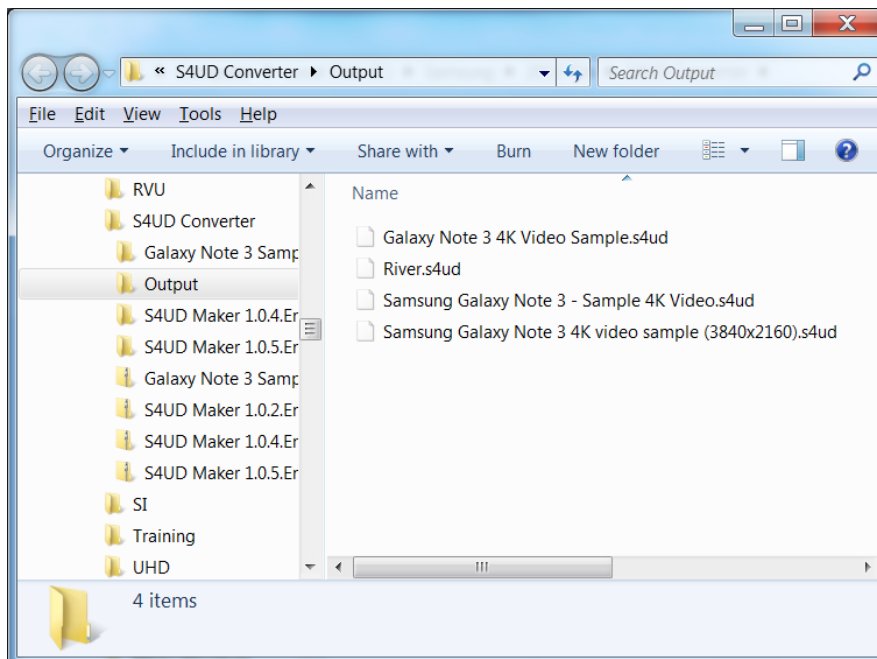
- a) File a/b: a refers to number of files converted, b refers to total number of files. Once the encoding is complete, it is indicated with an 'OK' sign whereas a file under progress is indicated with a '->' sign
- b) Total time: Total time consumed on encoding (variable)
- c) Encoding time: Encoding time of the file under progress
- d) Remaining time: Encoding time remaining of the file under progress (predicted time)

2.1.7. Encoding complete

When the encoding is complete as shown in the diagram below, all the icons of the file is marked with an 'OK' sign and [Start] button is activated.



[Figure 2-7. Encoding complete]



[Figure 2-8. Output Files]

3. Figures / Tables

Figures

[Figure 2-1. Main Window].....	4
[Figure 2-2. File Explorer Window].....	5
[Figure 2-3. File Control].....	5
[Figure 2-4. Output Folder]	6
[Figure 2-5. Folder Explorer Window]	7
[Figure 2-6. Encoding Info]	8
[Figure 2-7. Encoding complete].....	9
[Figure 2-8. Output Files].....	9

Tables

[Table 1-1. Specification].....	3
---------------------------------	---