

Product name	i100, i85, i8, i7, L74 Wide
Title	World Tour Guide (i100/85/8/7, L74Wide)

1. What is the World Tour Guide?

World Tour Guide download :

http://www.samsungcamera.com/customer/download/cus_utility_list.asp

"World Tour Guide"

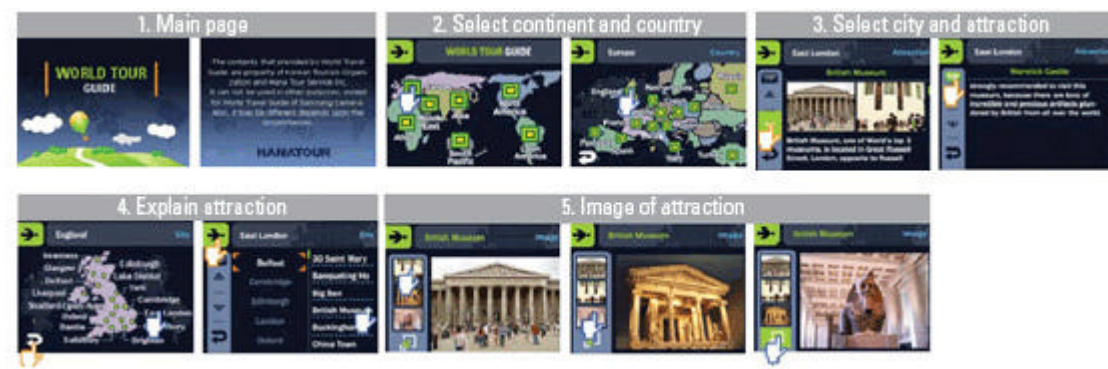
Samsung Camera is pleased to bring you the exclusive World Tour Guide, available on the Samsung i100, i80 i7,i85 ,L74W.This unique feature, added to digital camera for the first time, provides even greater usability allowing you access to information on famous attractions in over 30 countries around the world.

*Easy Operation through a Flash Animated GUI

With both Flash Animated GUI, the World Tour Guide is easily operated.

* i7 and L74W : Touch Screen

* i100, i80, i85 : 5-Way Key



*High-capacity internal memory provided for storage

You can store both pictures and various World Tour Guides with high-capacity memory.

* i7 and L74W : 450MB

* i100,i80 and i85 : 190MB

Should you wish to download a new guide from one of the 29 countries available, simply visit samsungcamera website.

http://www.samsungcamera.com/customer/download/cus_utility_list.asp

2.How to Download

To use the World Tour Guide, the information must be saved on a memory, as same below.

* i7 and L74W : internal memory

* i100, i80 and i85 : both of memory types (internal or external memory)

1.Connect your camera to a computer and turn on

(before you connect the camera to your computer, please refer to the below information)

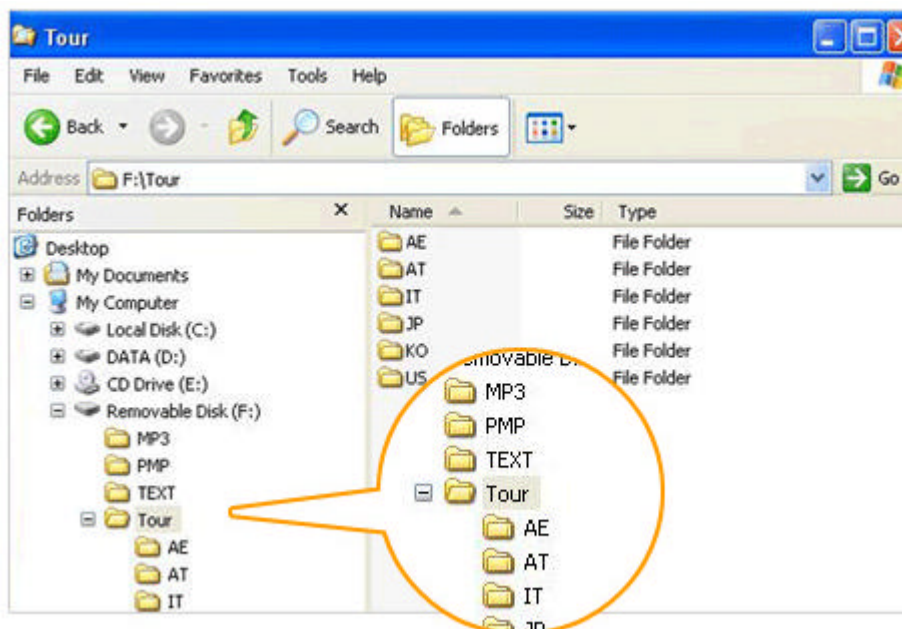
To save the data onto a memory card, make sure to insert the memory card before making a connection; or to save the data to the internal memory, make sure to remove the memory card before making a connection.

2. Select the World Tour Guide information you require.

3. Download the Zip file to your computer and extract the World Tour Guide file.

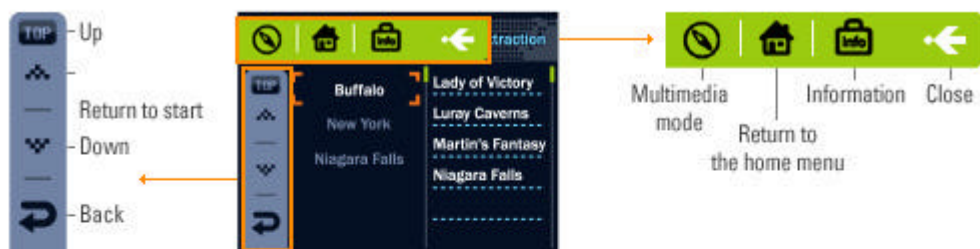
4. Run Windows explorer and find the removable disk.

5. Create a [tour] folder on the removable disk.



6. Select the file or files you want and copy them to the [tour] folder on the removable disk.

Understanding the World Tour Guide icons



INFORMATION

- Saving the Tour Guides may take longer for different countries. Please ensure you save country information in order.
- If the downloaded files are changed by any non-official methods, the files will not play back on the camera.
- Formatting the camera deletes all data on the memory (including protected images, Movies, Multi media files and Tour Information). Copy the files to a computer before formatting the memory.
- If there is no related country file on the memory, the country will be displayed but cannot be selected.
- The contents of the World Tour Guide are property of Hana Tour Service inc.
It cannot be used for any other purpose except for Samsung Cameras World Tour Guide.
The information may change without notice dependent on circumstances.



World Tour Guide download :

http://www.samsungcamera.com/customer/download/cus_utility_list.asp