

# **2014 Samsung TV F/W Upgrade Guide**



**Samsung Electronics**

# Step1. How to prepare the USB Memory Drive

1. Download the firmware file from Samsung.com into your computer.

File Name : T-GFP8\*\*\*\*.exe / T-GFP9\*\*\*\*.exe / T-GFP\*\*\*\*.exe / T-MXL0MASC.exe

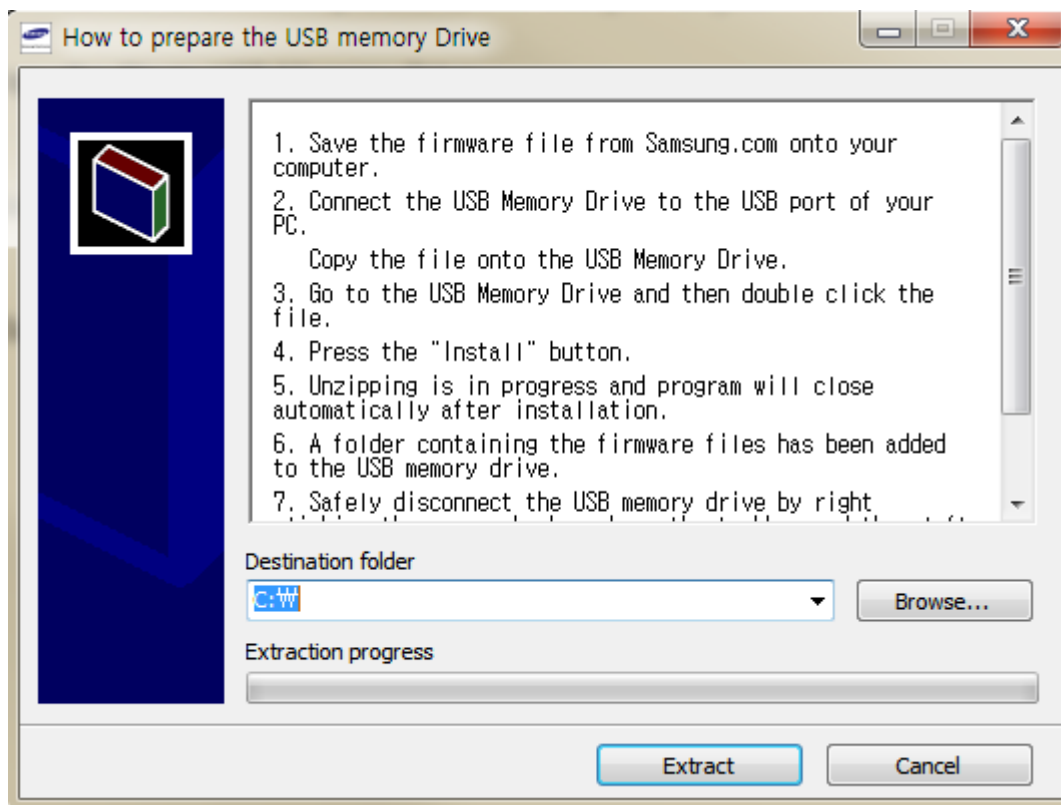
T-MST14\*\*\*\*.exe / T-NT14U\*\*\*\*.exe / T-NT14L\*\*\*\*.exe

2. Connect the USB Memory Drive to the USB port of your PC.

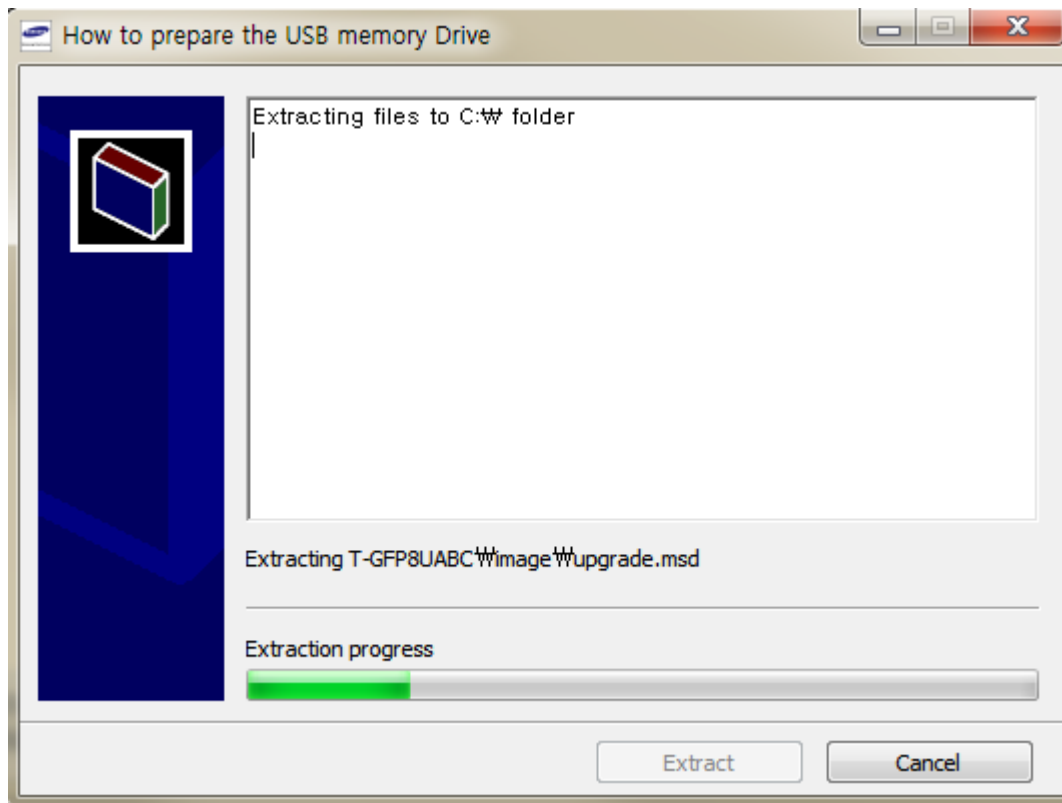
Copy the file to USB Memory Drive.

3. Go to the USB Memory Drive, and then double click the file.

4. Click the "install" button.



5. The file will be installed.



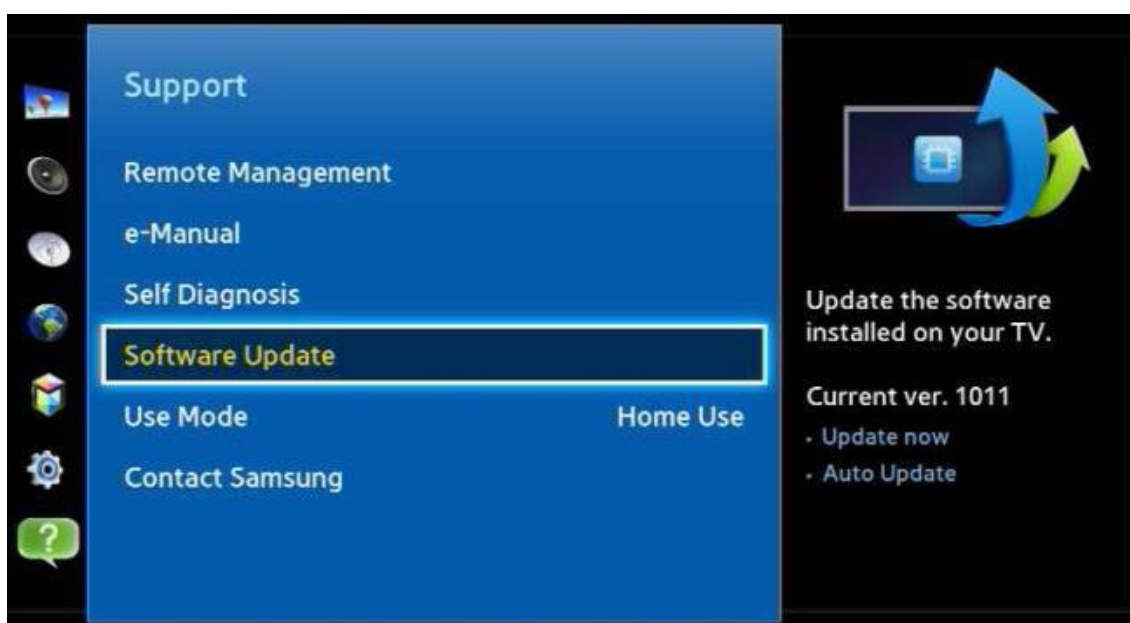
6. Confirm that a folder containing the firmware files has been added to the USB memory drive.

Confirm that USB Driver has a folder named same with File Name in the root directory.

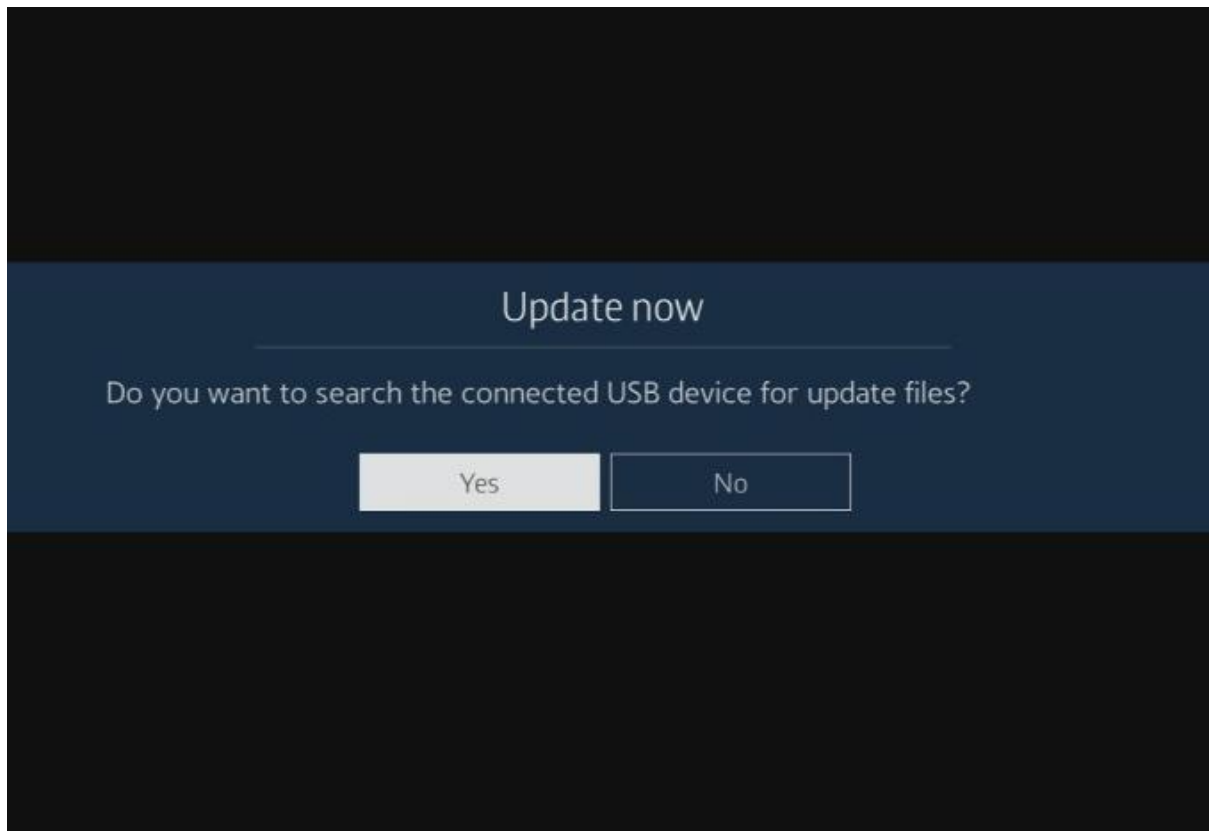
7. Safely disconnect the USB memory drive by clicking in 'Safely Remove' in Task Bar.

## Step2. How to upgrade the Firmware by USB

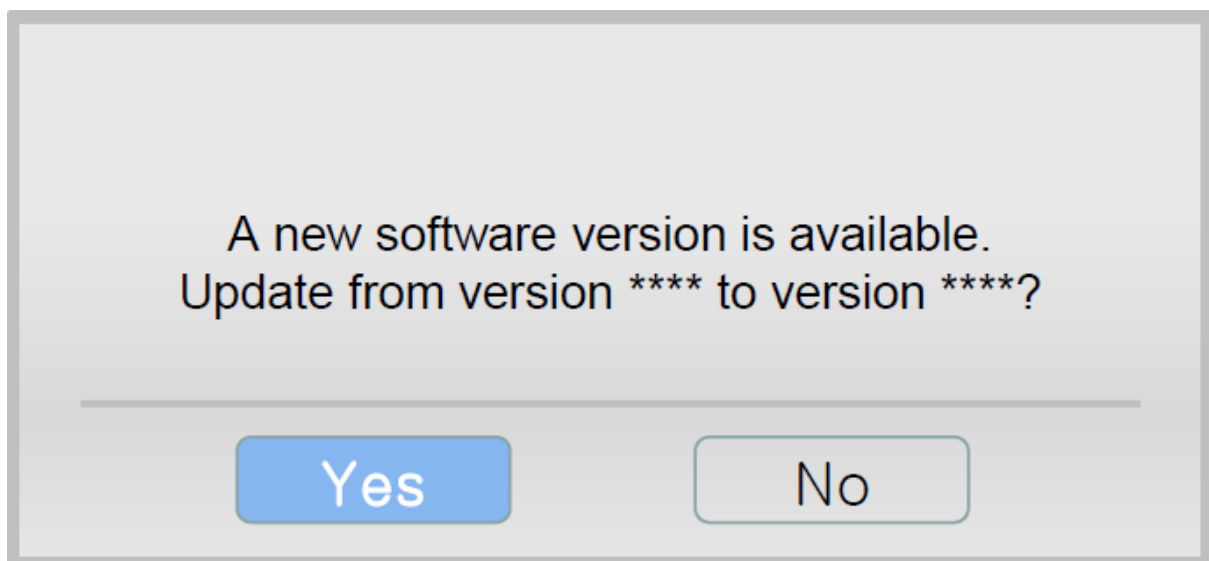
1. Insert the USB Memory Drive containing the firmware into the USB port of TV.
2. Turn on the TV and wait around 1 or 2 minutes.
3. Press the MENU button, select 'Support', 'Software Update', and then 'By USB'.



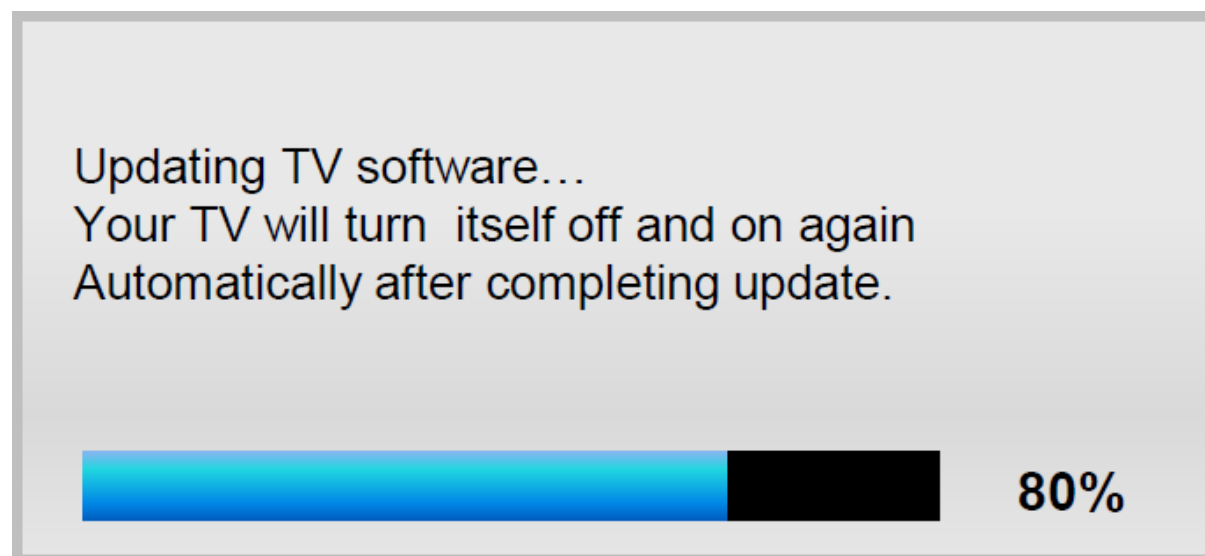
4. The message for searching for update files is displayed. Press Yes.



5. If the TV finds a valid firmware version, it displays the message below. Press Yes, then TV starts updating.



6. Press Yes, then TV starts updating. When the firmware upgrade is complete, the TV turns off and then back on by itself.



## ❖ Cautions

While upgrading,

- ✓ Do not pull the USB Memory drive out.
- ✓ Do not unplug the power cable.
- ✓ Do not turn off the TV.

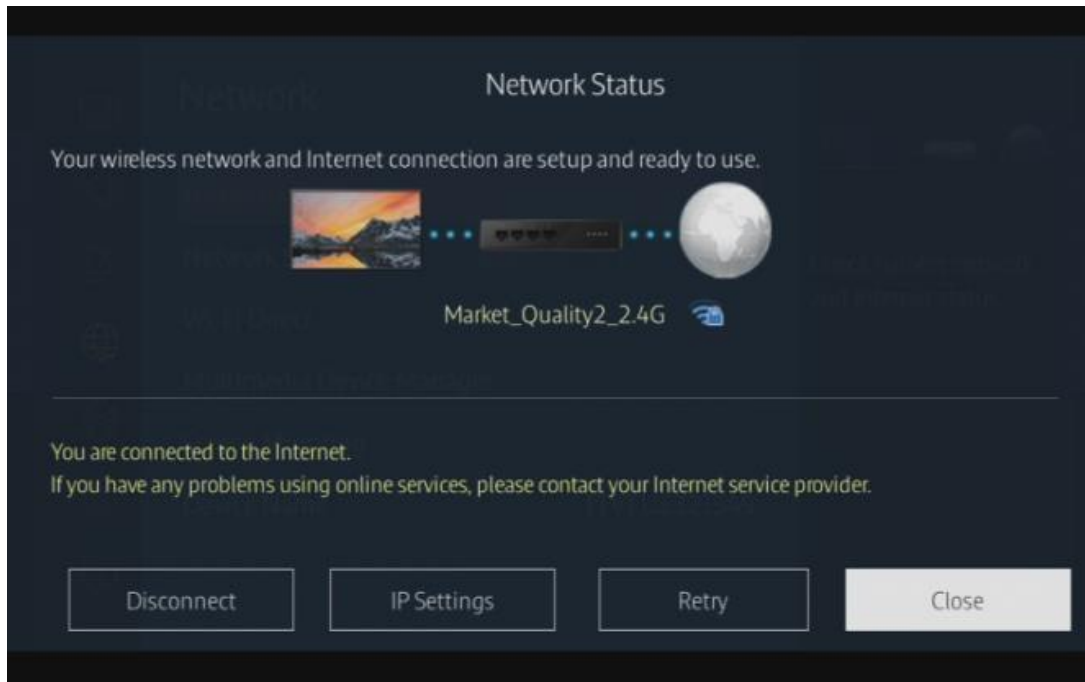


### ※ Warning

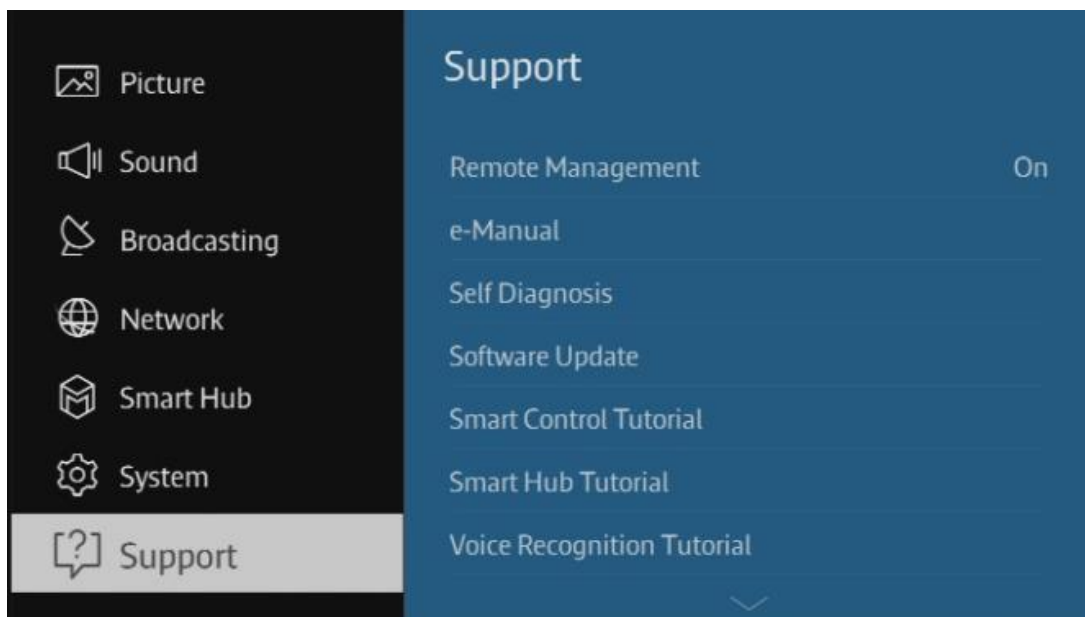
Pulling the USB Memory drive out or unplugging the power cable will cause a firmware error or main board failure. Firmware errors and main board failures are not covered by Samsung warranty policy.

## ❖ How to Upgrade the Firmware by Online

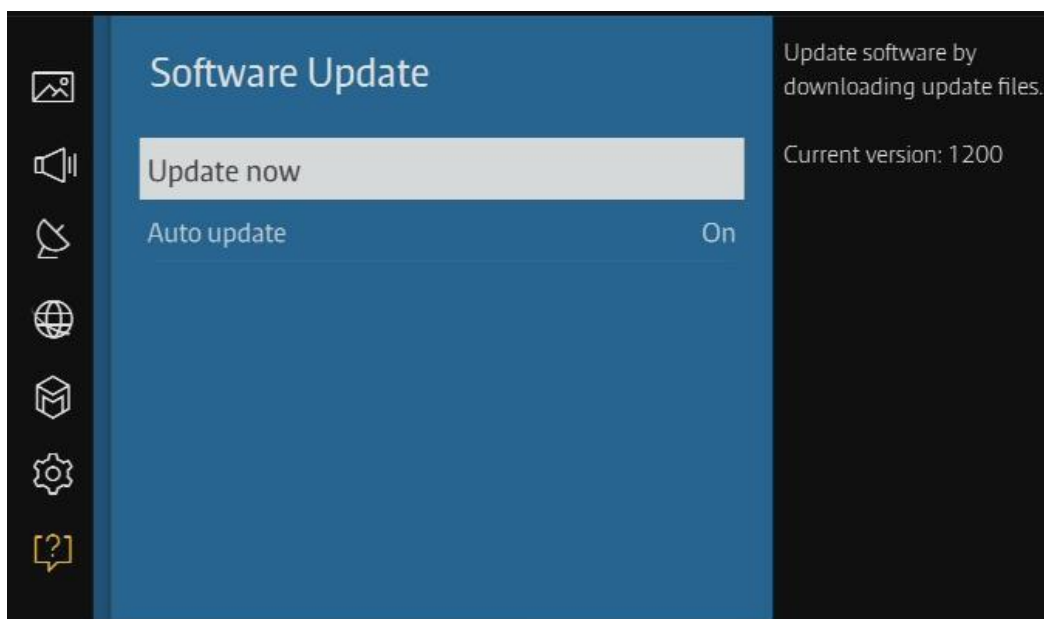
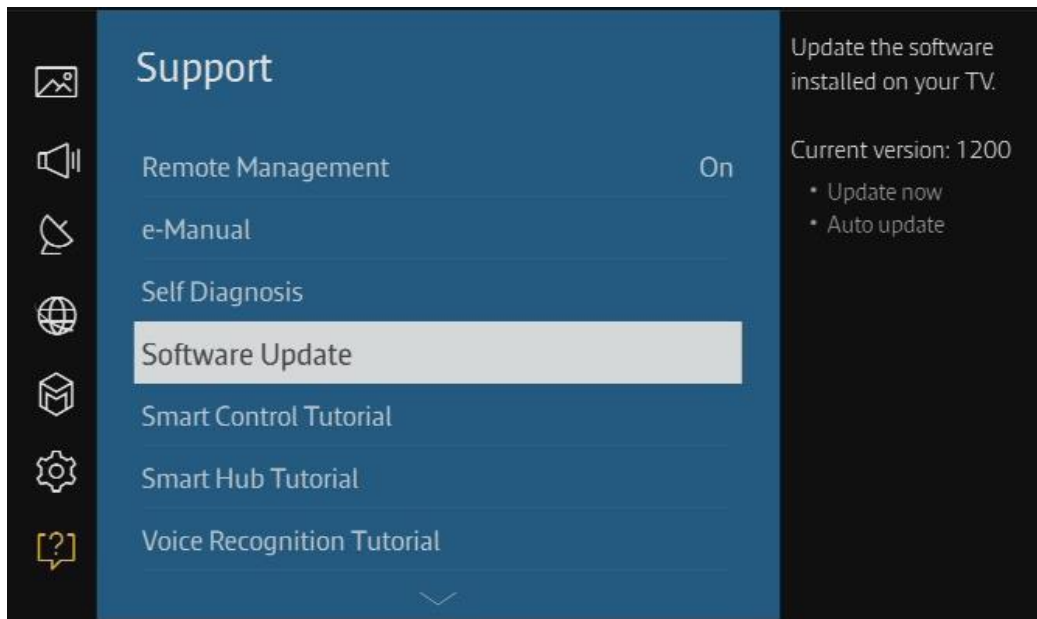
1. Turn on the TV.
2. Confirm that your TV is connected to the Network by using the Network Status test.



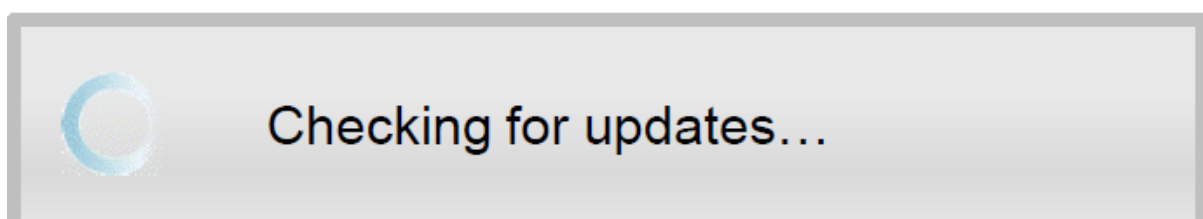
3. Press the MENU button, select 'Support', 'Software Update', and then 'Update now'.



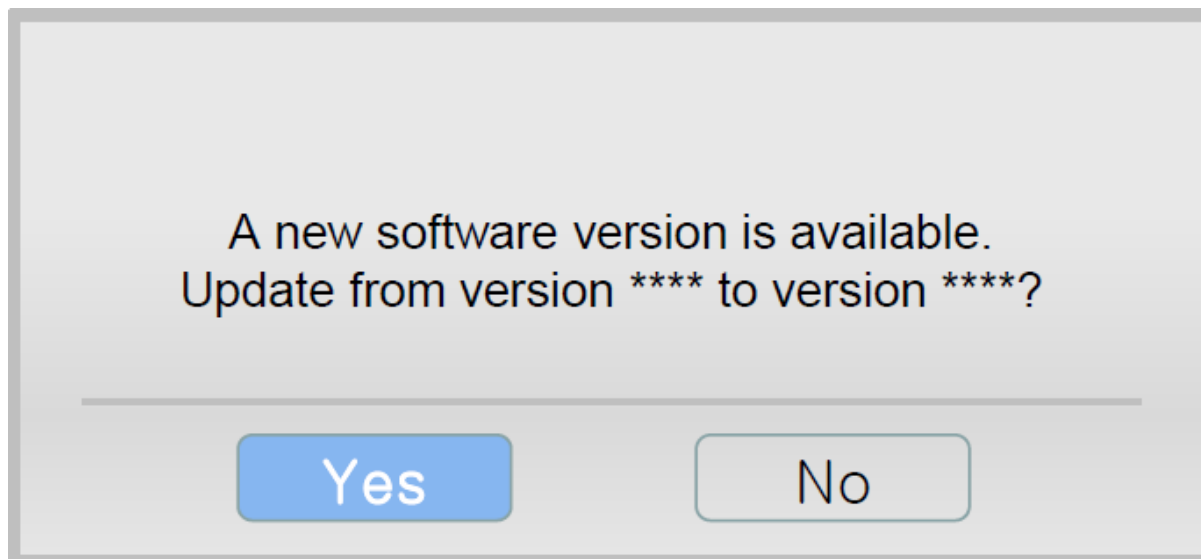




4. The message "Connecting to the network server..." is displayed.



5. If the TV finds a higher firmware version from the server, TV asks you to update new version. Press Yes.



6. It starts downloading. When the firmware upgrade is completed, the TV turns off and then back on by itself.

