

# **NX Lens Firmware Upgrade guide (including i-Launcher)**



**Samsung Electronics.**

## NX Lens Firmware upgrade guide

- **Related Model: NX2000, NX300, NX300M, NX30, NX mini**

Please use i-Launcher program for easy firmware upgrade

(You can install “i-Launcher” program using installation CD)

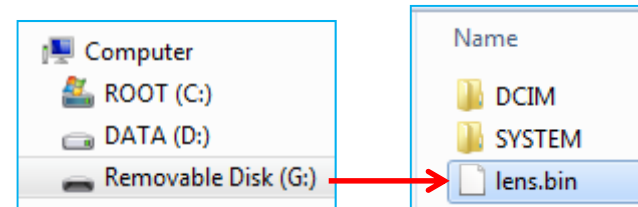
- **Related Model: NX5, NX10, NX11, NX100, NX1000, NX20, NX200, NX210**

Please download firmware file from Samsung.com homepage.

→ Unzip firmware file and copy to SD card

→ Input SD card to your NX camera

→ Refer to No.7(page 4)



### ※ Information

1) Use the full charged battery.

2) Suggested memory card format before upgrade start.

3) During the updating process:

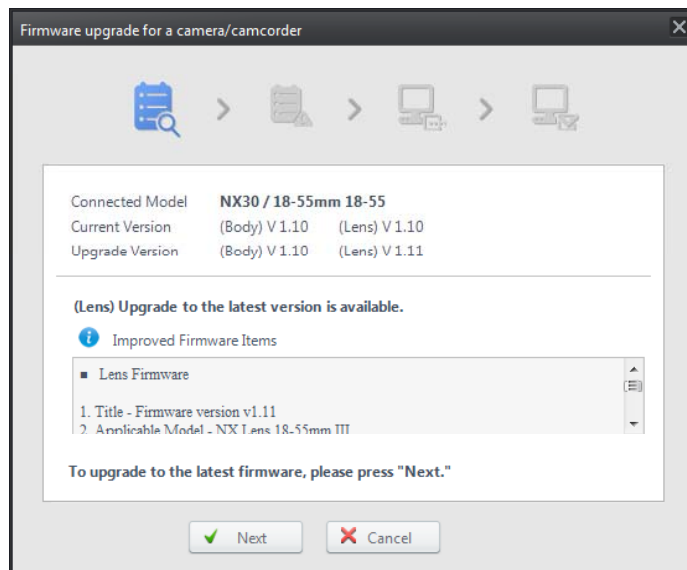
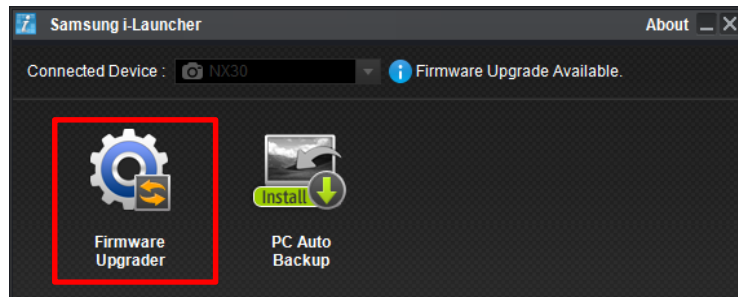
Do not cut off the power / Do not remove the battery

→ It causes the cannot power-on or the severe damage

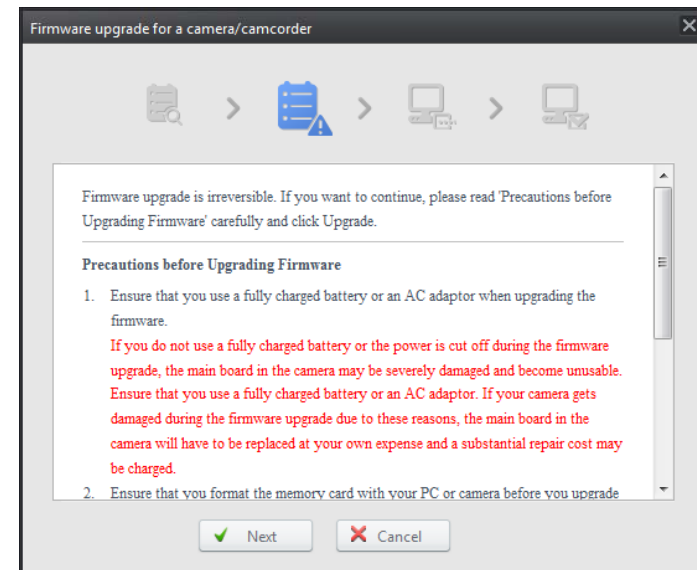
4) Firmware file name is “lens.bin”

## Firmware Upgrade method

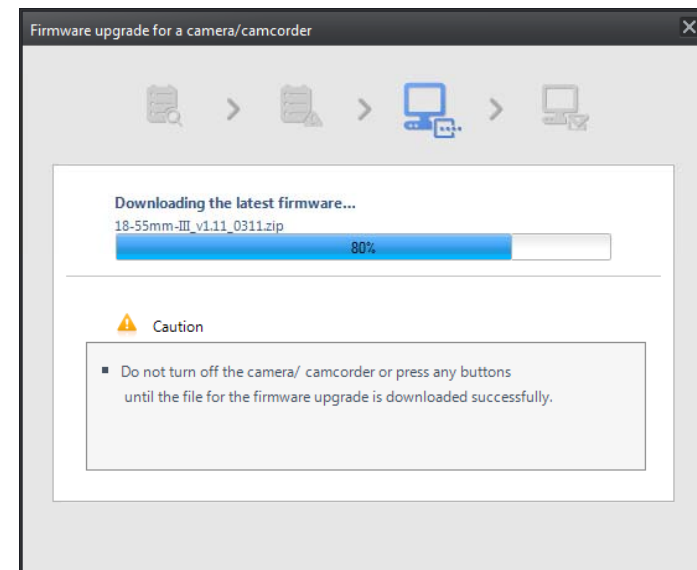
1. You can connect the camera to your computer
2. Opening “Samsung i-Launcher”
  - select “Firmware Upgrade” menu
  - \* Automatically “Upgrade window” open if new firmware registered.



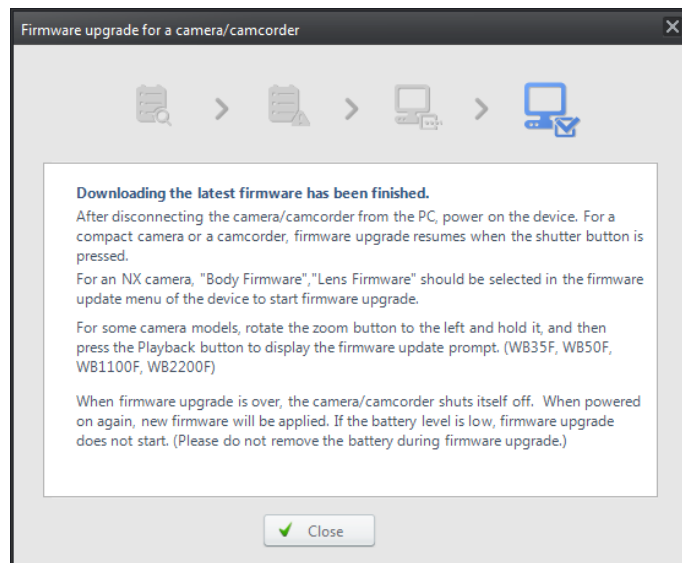
## 3. You can check precautions



## 4. Firmware download start



5. Once the transfer is complete,  
click the Close button

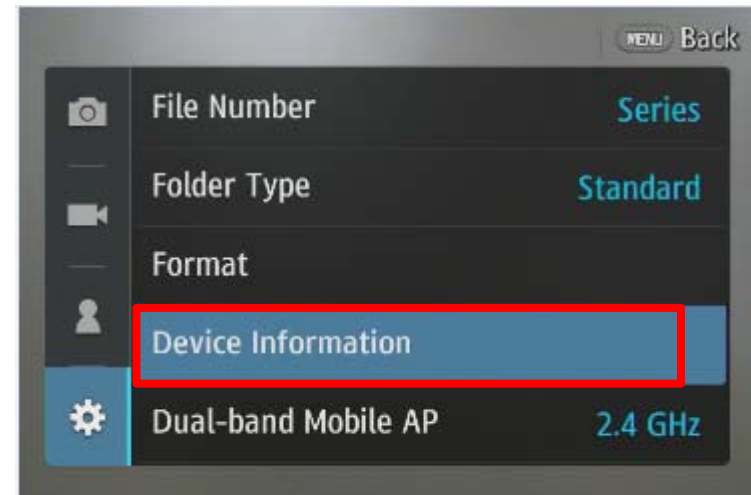


6. Terminate the USB cable connection

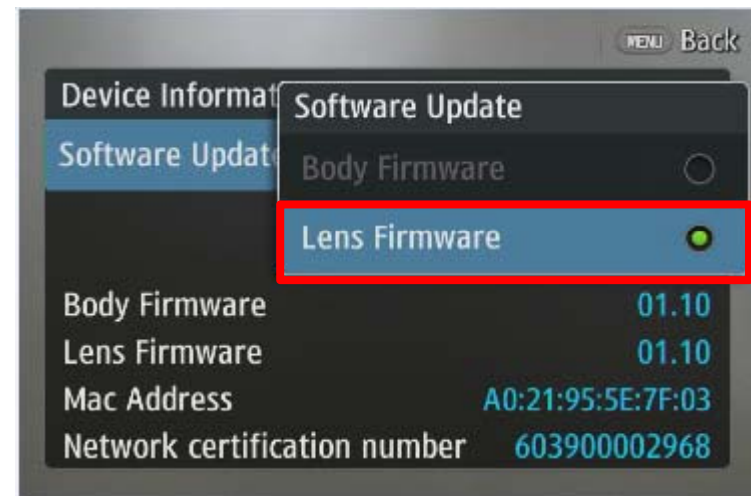
7. Turn the camera on

※ If you don't use i-Launcher but download  
Firmware from Samsung.com homepage directly  
→ unzip "zip" file & copy firmware file to SD card

8. Select the MENU → Setting  
→ Device Information



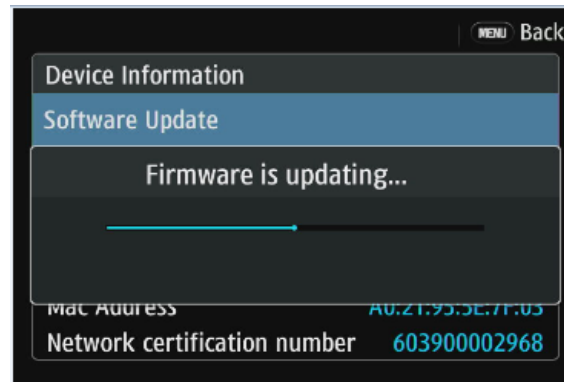
9. Select Software Update  
→ Lens Firmware



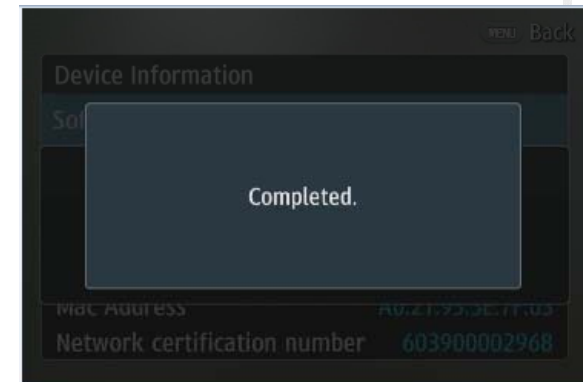
## 10. Update will start follow below sequence



- ① Firmware version checking  
Press "Yes" → Upgrade start



- ② Firmware is updating...  
→ You can see the updating status



- ③ Finish upgrade  
→ You can see "Firmware update completed" message  
※ If your camera stop or power-off during upgrading  
→ Please retry upgrade