

# **i-Launcher Firmware Upgrade guide For Samsung Camera**




**Samsung Electronics.**

# Installing i-Launcher

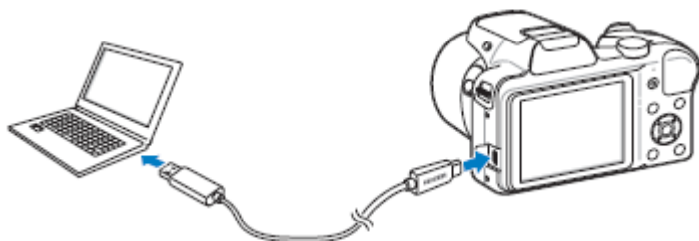
Refer to User Manual for details.

i-Launcher allows you to upgrade the firmware of your camera.

- 1 Rotate the mode dial to .
- 2 Select **Connectivity** → **i-Launcher** → **On**.
- 3 Turn off the camera.
- 4 Connect the camera to your computer with the USB cable.



You must plug the small end of the USB cable into your camera. If the cable is reversed, it may damage your files. The manufacturer is not responsible for any loss of data.



- 5 Turn on the camera.

## 6 Install i-Launcher on the PC.

OS	How to Install
Windows	<p>When the pop-up window prompting you to install i-Launcher appears, select <b>Yes</b>.</p> <ul style="list-style-type: none"><li>• If a pop-up window prompting you to run iLinker.exe appears, run it first.</li><li>• If the pop-up window prompting does not appear, click <b>My Computer</b> → <b>i-Launcher</b> → <b>iLinker.exe</b>.</li><li>• When you connect the camera to a computer with i-Launcher installed, the program will launch automatically.</li></ul>
Mac	Click <b>Devices</b> → <b>i-Launcher</b> → <b>Mac</b> → <b>iLinker</b> .

## Opening i-Launcher

Windows: select Start → All Programs → Samsung → i-Launcher → Samsung i-Launcher.

Mac: click Applications → Samsung → i-Launcher

## Updating the firmware

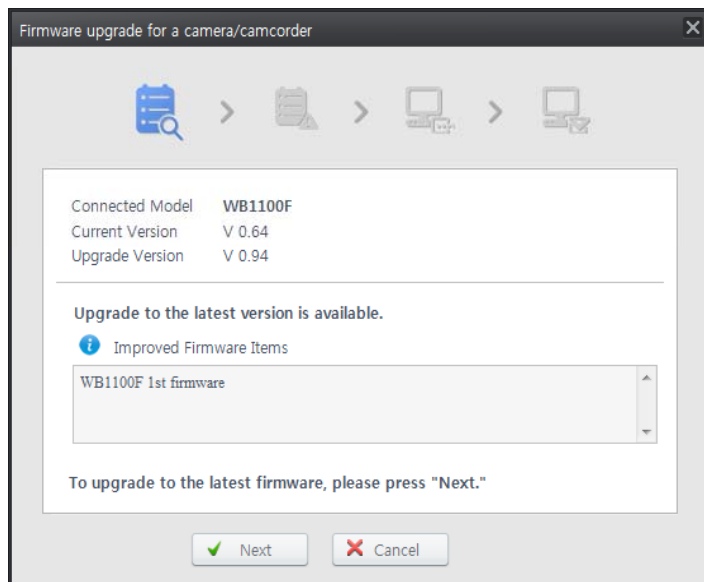
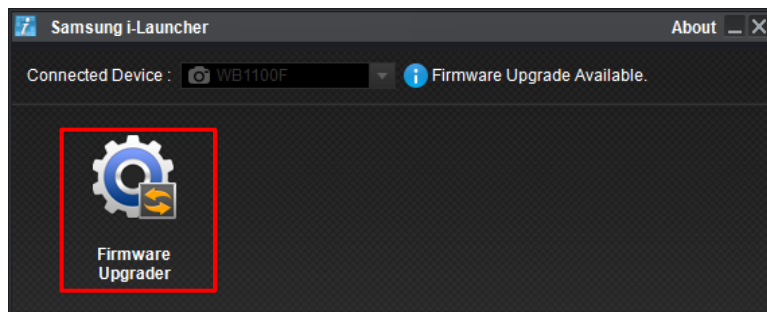
### Before upgrading the firmware

1. Make sure you use fully charged batteries. If fully charged batteries are not used, or the power is cut during a firmware upgrade, the main board may be seriously damaged, resulting in camera malfunction.  
If camera malfunction is caused during a firmware upgrade for the reasons given above, the main board may have to be serviced by a Samsung service center, which may result in major repair charges.
  2. Before upgrading the firmware, make sure that you format the memory card on your PC or camera and then download the necessary firmware file.
  3. To upgrade firmware there should be sufficient free space on the memory card for the size of the firmware file.  
If the firmware upgrade is not completed because of insufficient memory space, delete some of the files saved on the memory to secure more free space and then try again. (over 100MB recommended)
  4. Do not operate the camera, remove the batteries, or cut the power while upgrading firmware.  
Operate the camera only after the firmware upgrade is complete.
  5. Once the firmware is upgraded, it is not possible to restore the earlier version of the firmware.  
When the firmware is upgraded, all the camera settings are set to their default values.  
Since all the files stored in the internal memory(not Memory card) will be deleted, ensure that files are copied to other storage devices before upgrading firmware.
  6. Before upgrading the firmware, ensure that the PC is connected to a network.
- ※ Should you need further detailed information, or if you experience difficulty in upgrading firmware, do not proceed with the process on your own. Visit a Samsung service center near you.

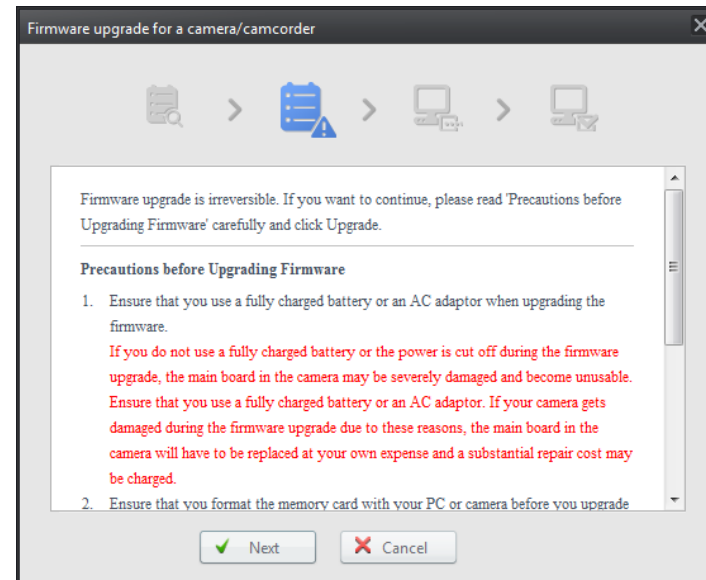
# Updating the firmware

## Firmware Upgrade method

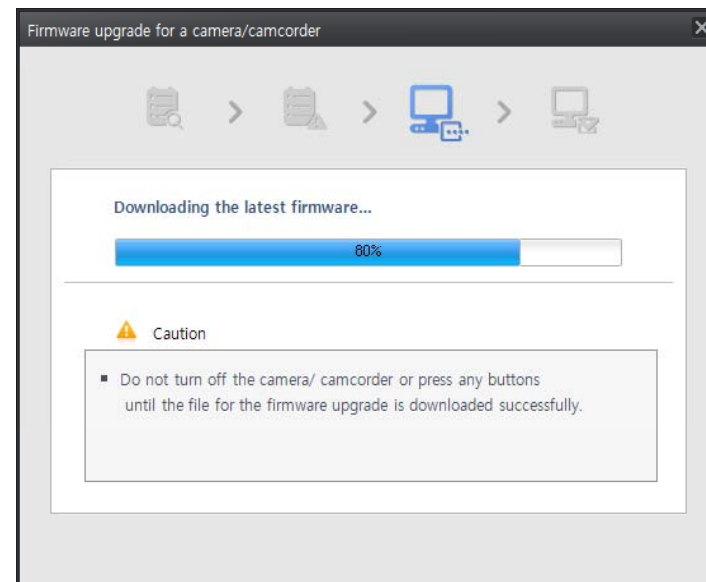
1. You can connect the camera to your computer
2. Opening “Samsung i-Launcher”
  - select “Firmware Upgrade” menu
  - \* Automatically “Upgrade window” open if new firmware registered.



## 3. You can check precautions

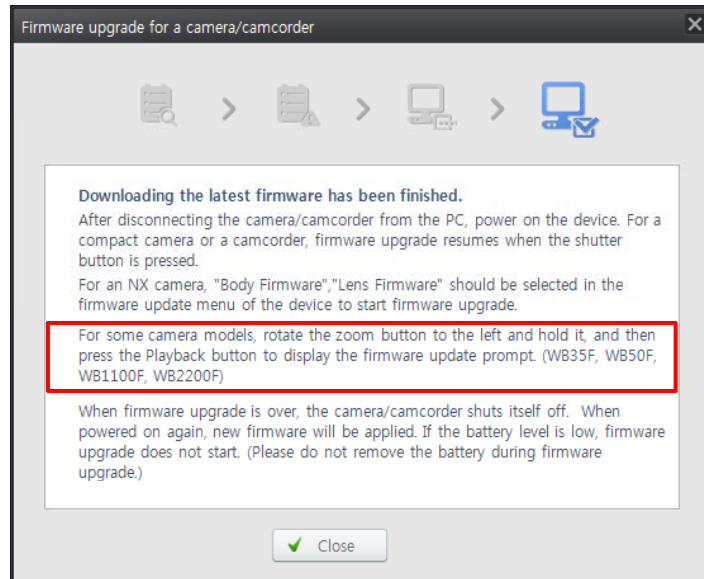


## 4. Firmware download start



## Updating the firmware

5. Once the transfer is complete, click the Close button



6. Terminate the USB cable connection

7. Power-off the camera

→ Press the **PLAYBACK** button for 1 second while hold the Zoom out position.(rotate the zoom button to the left and hold it)



8. The version of the firmware to update will be displayed on the LCD screen. When you press the SHUTTER button, update will start.



9. The progress of the firmware update will be displayed on the LCD



10. When update is completed, power is off automatically.