

[Firmware Upgrade - intelli-studio]

1. Before upgrading the firmware

- Make sure you use fully charged batteries. It is recommended that you use an AC adaptor for cameras that have an AC adaptor. If fully charged batteries are not used, or the power is cut during a firmware upgrade, the main board may be seriously damaged, resulting in camera malfunction.
If camera malfunction is caused during a firmware upgrade for the reasons given above, the main board may have to be serviced by a Samsung service center, which may result in major repair charges.
 - Before upgrading the firmware, make sure that you format the memory card on your PC or camera and then download the necessary firmware file. Since the MMC(MultiMediaCard) may not be suitable for firmware upgrade, depending on the model, check before you proceed with upgrading the firmware.
 - To upgrade firmware there should be sufficient free space on the memory card for the size of the firmware file. If the firmware upgrade is not completed because of insufficient memory space, delete some of the files saved on the memory to secure more free space and then try again.
 - Do not operate the camera, remove the batteries, or cut the power while upgrading firmware. Operate the camera only after the firmware upgrade is complete.
 - Once the firmware is upgraded, it is not possible to restore the earlier version of the firmware. When the firmware is upgraded, all the camera settings are set to their default values. Since all the files stored in the internal memory will be deleted, ensure that files are copied to other storage devices before upgrading firmware.
 - Before downloading firmware, make sure you read the Software Use Terms Conditions. The act of downloading the firmware is taken to mean that you have agreed to the Software Use Terms and Conditions.
- ※ Should you need further detailed information, or if you experience difficulty in upgrading firmware, do not proceed with the process on your own. Visit a Samsung service center near you.

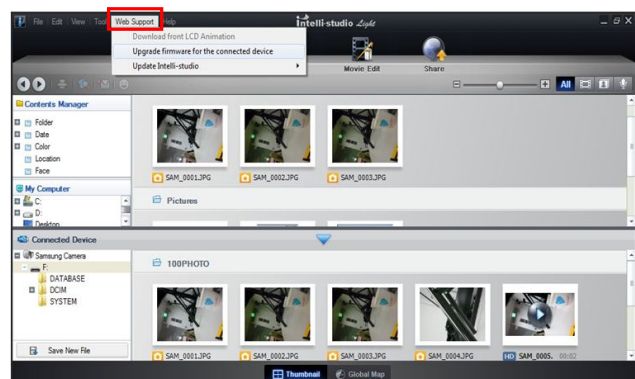
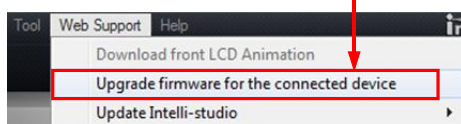
2. How to Upgrade the Firmware

[Caution]

If the batteries are completely discharged during the firmware upgrade, camera malfunction may occur. Make sure to use fully charged batteries for safety.

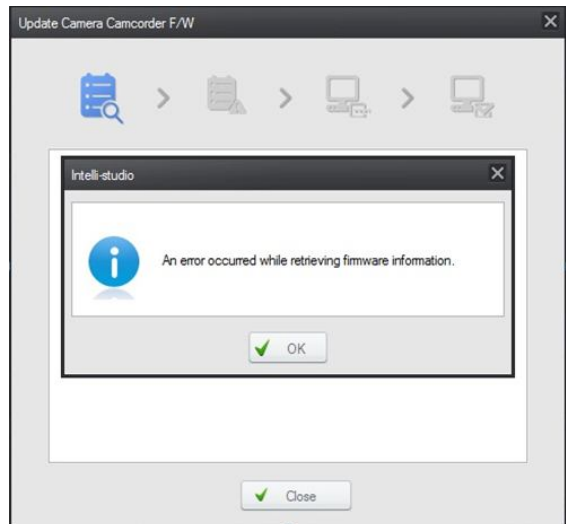
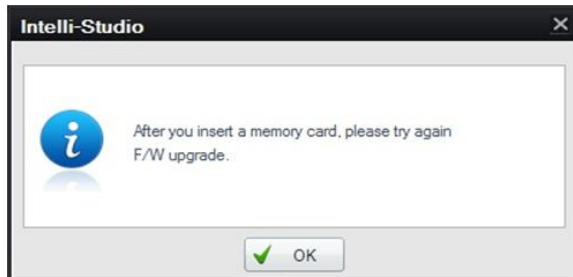
- 1) Execute the intelli-studio, then click following Menu.

- ① "Web Support" Click
- ② "Upgrade firmware for the connected device"
Click



☞ If there is no SD card inside or connection status of products has poor, “Web Support” Menu will not be activated.

In case of abnormal connection with Server, Error message will pop-up.

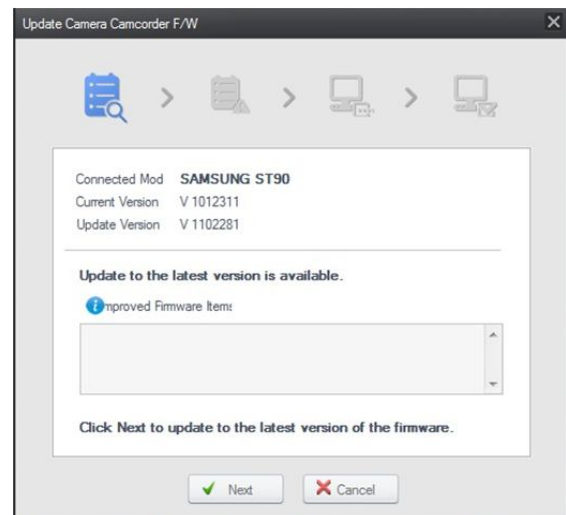


2) After connected with Server, available F/W ver. Will be shown up.

(Latest ver. For Customer products)

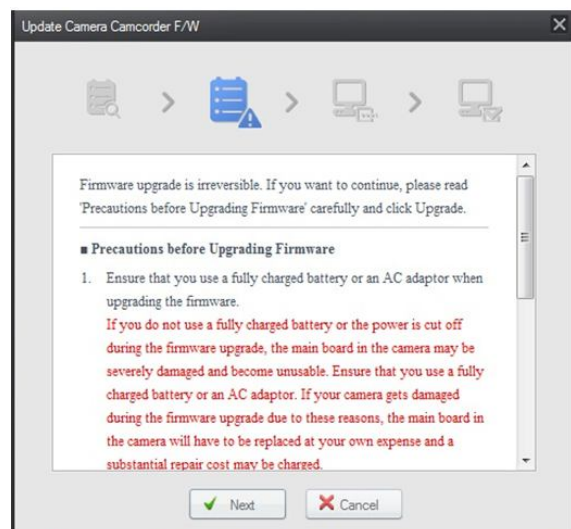
In case, lower ver. has product inside, can see the pop-up same with right side.

(Comment for F/W' Improvements has included)



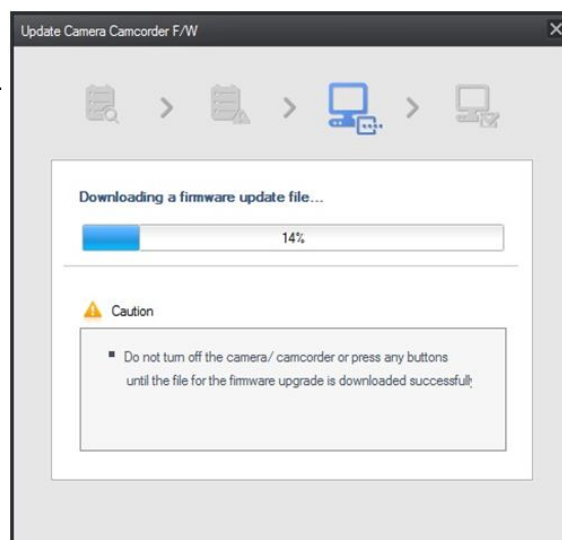
3) Click “Next”, then can see the Caution box.

☞ In case, same ver. With latest one has product inside, You will have the message, “No need to Upgrade”



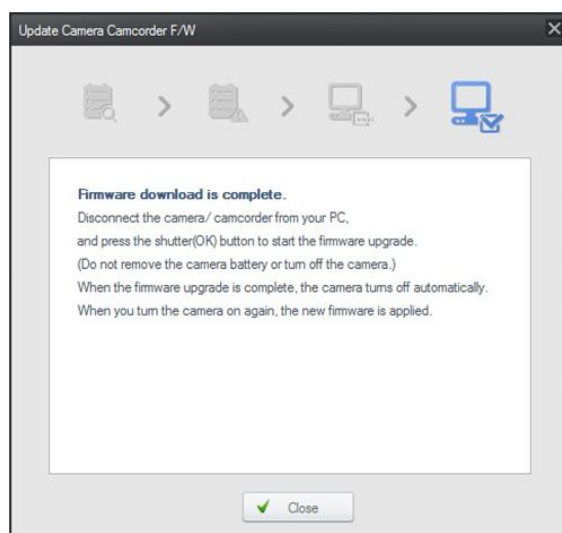
- 4) Progress Status Bar will run, automatically.
That is just file transferring between PC and product.

※ If USB cable has unplugged or Off the power while being upgraded, F/W file transfer will stop.



- 5) Complete F/W file transfer, then unplugged cable.
Next, F/W Upgrade should be required on Camera itself.

※ "Next step" process is only for Camera product.
Camcorder does not need further process for upgrading



----- This page is for Camera, only -----

- 6) Turn on the camera, transferred F/W file,
then F/W upgrading message will be shown,
automatically.

※ If F/W upgrading does not run,
whenever the camera is on,
same message will pop-up.



7) Press the Shutter, then process is going on.

※ Fully charged battery is required in order to upgrade.

Otherwise, upgrade will not work, and have a “Low level of Power source” warning on LCD.



8) After finishing upgrade firmware, camera turned off automatically.

※ F/W file will be deleted in External memory card, after F/W upgrading has done.