

Smart Control Guide

Usage of Smart Control

Samsung Smart Home

Smart Control by Samsung Smart Home app

1. Samsung Smart Home - Register Device

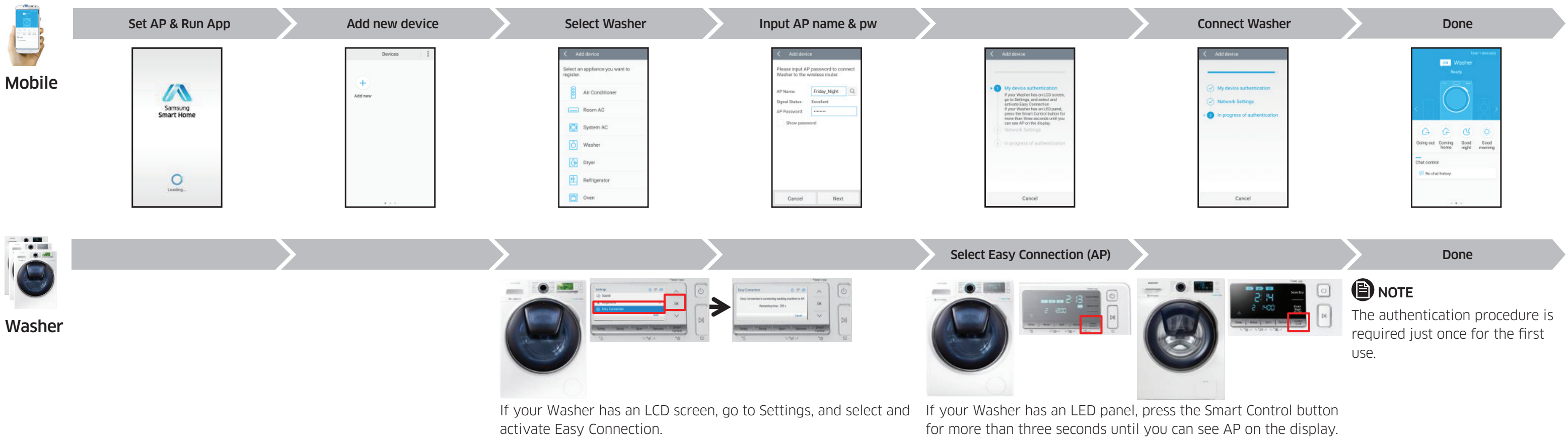
NOTE

Before run the app, Samsung Account is required.

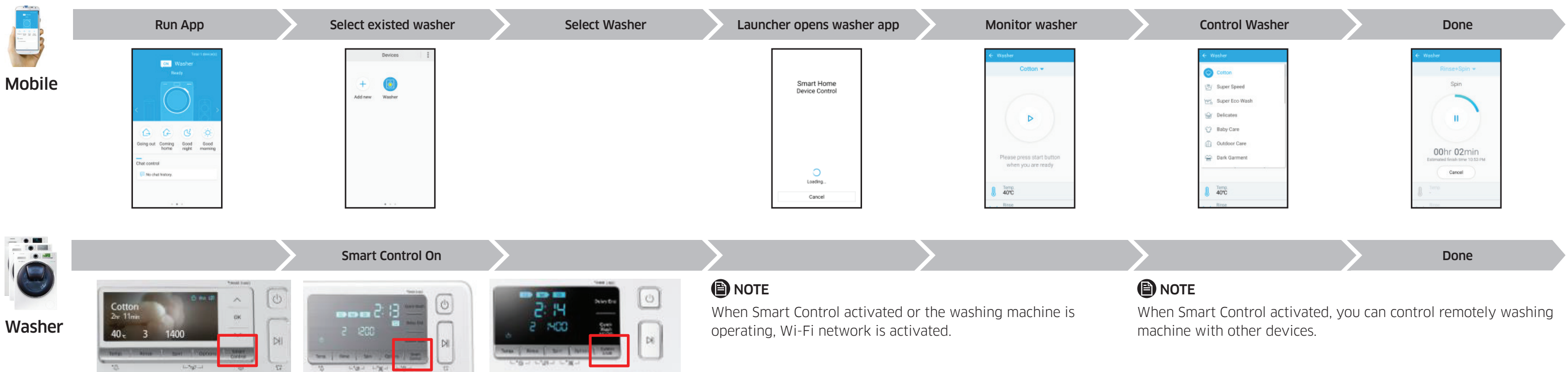


NOTE

AP must be connected to the external Internet. (check firewall or Internet connection of AP)



2. Samsung Smart Home - Control Washer



Smart Control-vejledning

Brug af Smart Control

Samsung Smart Home

Appen Smart Control fra Samsung Smart Home

1. Samsung Smart Home - Registrer enhed

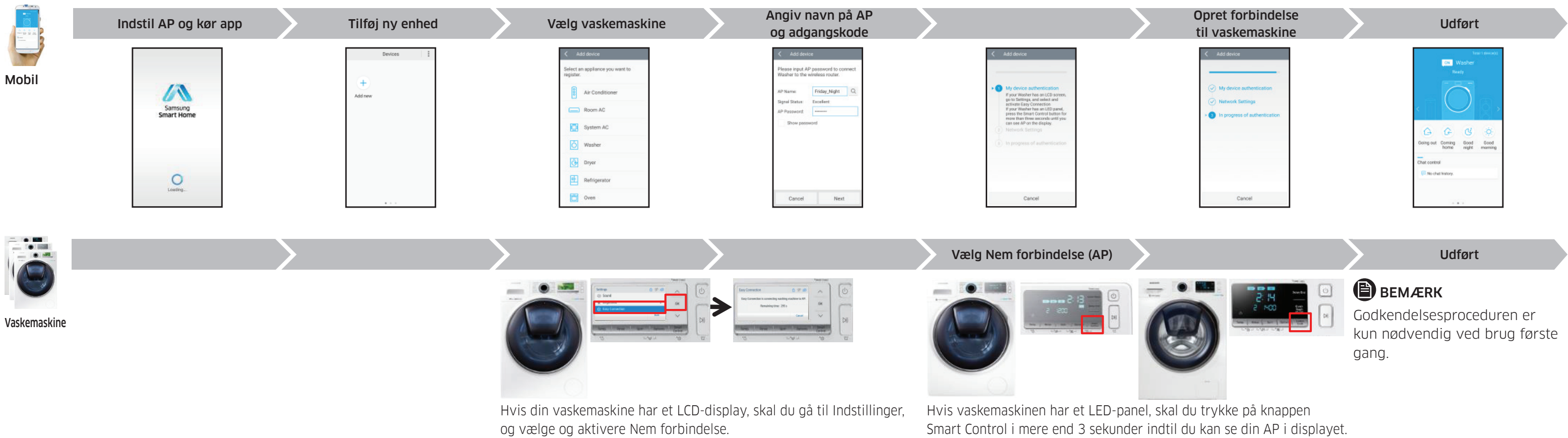
BEMÆRK

Før du kører appen, skal du have en Samsung-konto.

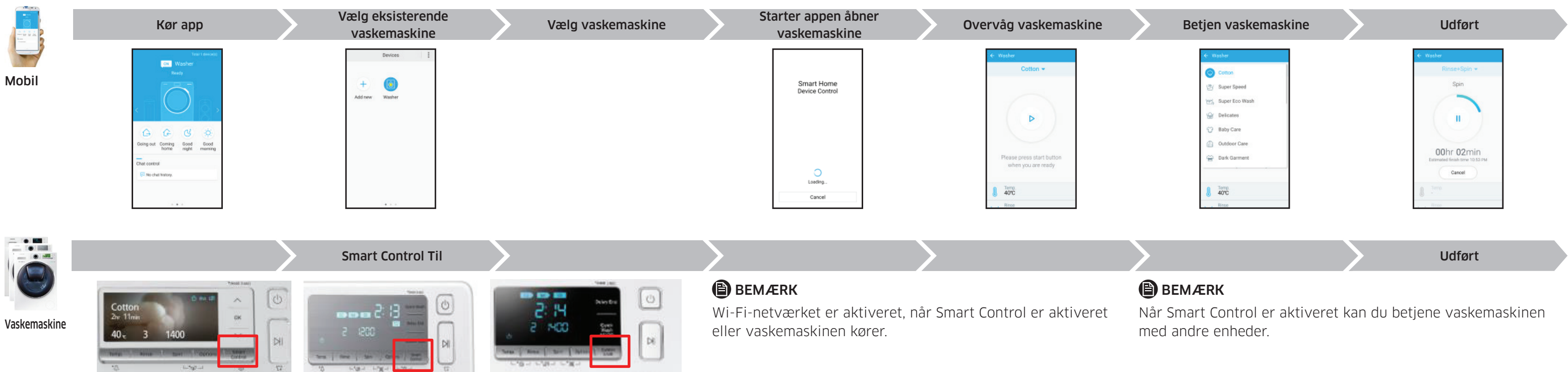


BEMÆRK

AP skal være forbundet til det eksterne internet. (kontrollér firewall eller internetforbindelse for AP)



2. Samsung Smart Home - Styr vaskemaskine



Smart Control -opas

Smart Controlin käyttäminen

Samsung Smart Home

Smart Control by Samsung Smart Home -sovellus

1. Samsung Smart Home - Rekisteröi laite

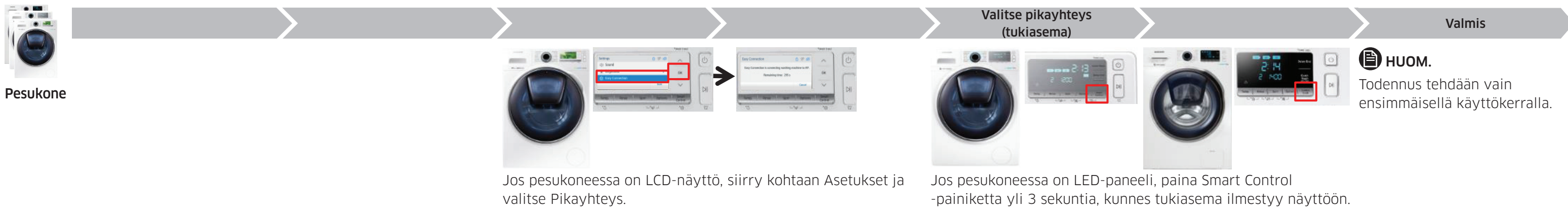
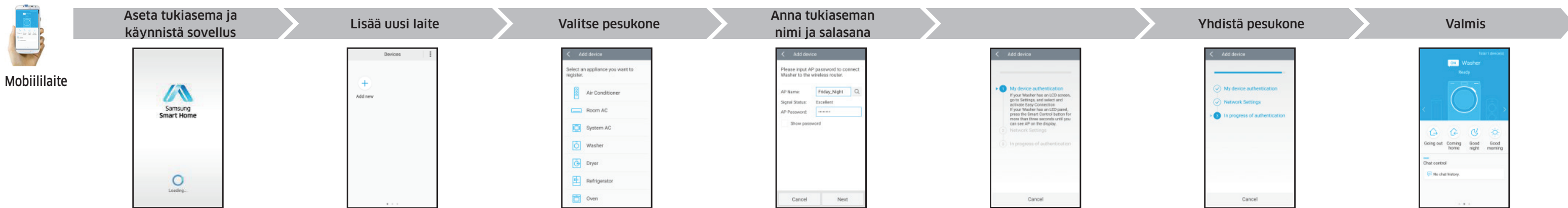


Sovelluksen käyttäminen edellyttää Samsung-tiliä.

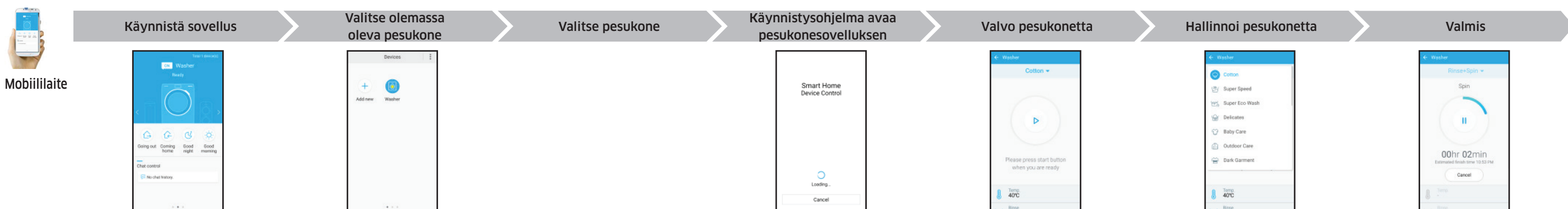


HUOM.

Tukiaseman tulee olla yhdistettynä Internetiin. (Tarkista palomuurin tai tukiaseman Internet-yhteyden tila.)



2. Samsung Smart Home - Hallinnoi pesukonetta



Veiledning for Smart Control

Bruk av Smart Control

Samsung Smart Home

Smart Control fra Samsung Smart Home-appen

1. Samsung Smart Home - Registrer enhet

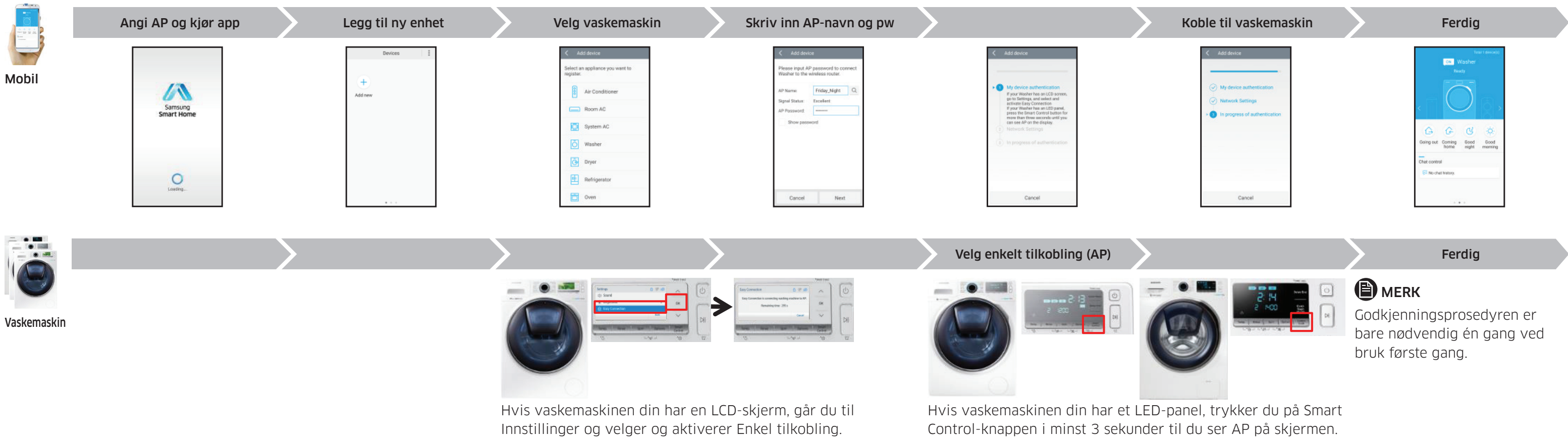


En Samsung-konto kreves for å kjøre appen.

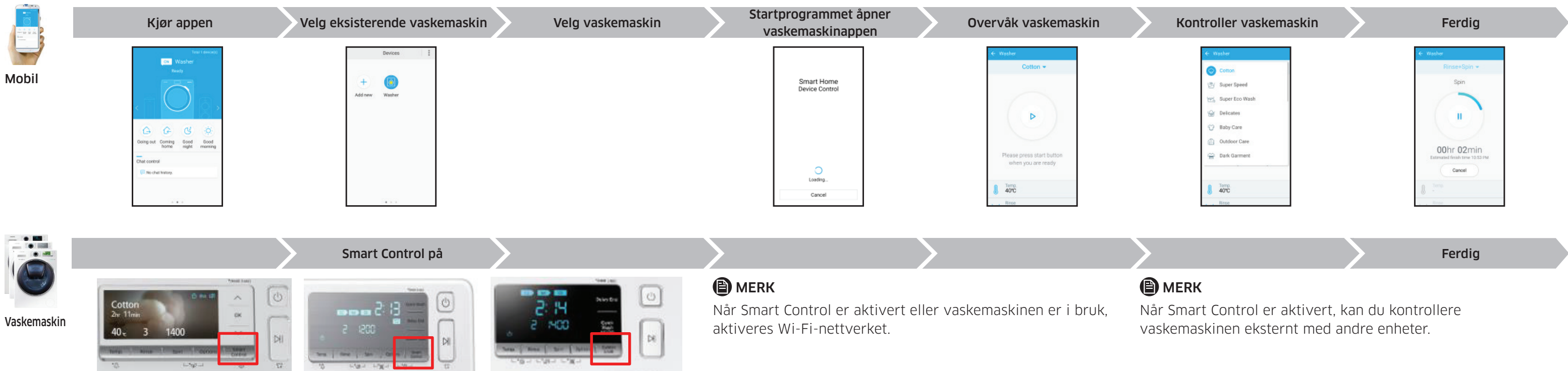


MERK

AP må være koblet til eksternt Internett. (sjekk brannmur eller Internettforbindelse i AP).



2. Samsung Smart Home - Kontroller vaskemaskin



Guide för Smart Control

Användning av Smart Control

Samsung Smart Home

Smart Control från programmet Samsung Smart Home

1. Samsung Smart Home - Registrera enhet

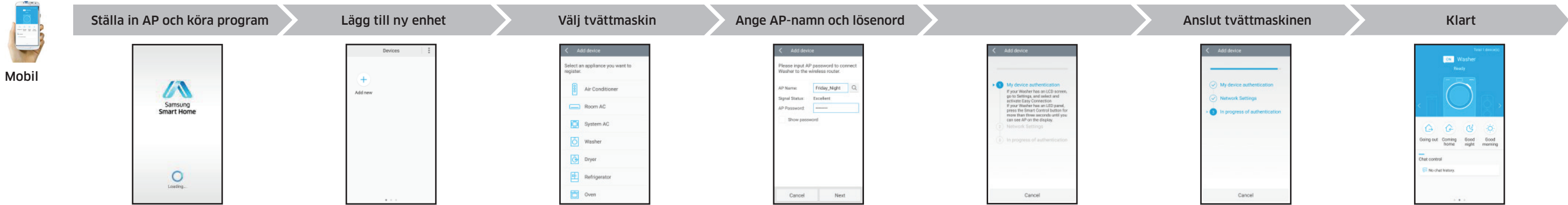


Samsung Account krävs innan du kan köra programmet.



OBS!

AP måste vara ansluten till externt internet. (kontrollera brandväggen eller AP:ns internetanslutning)



2. Samsung Smart Home - Styra tvättmaskinen

