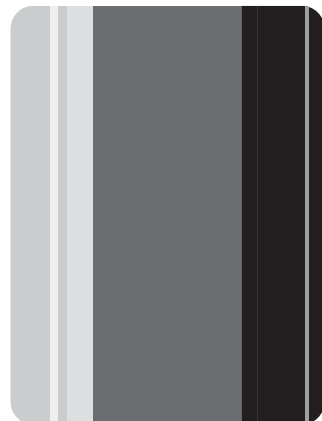


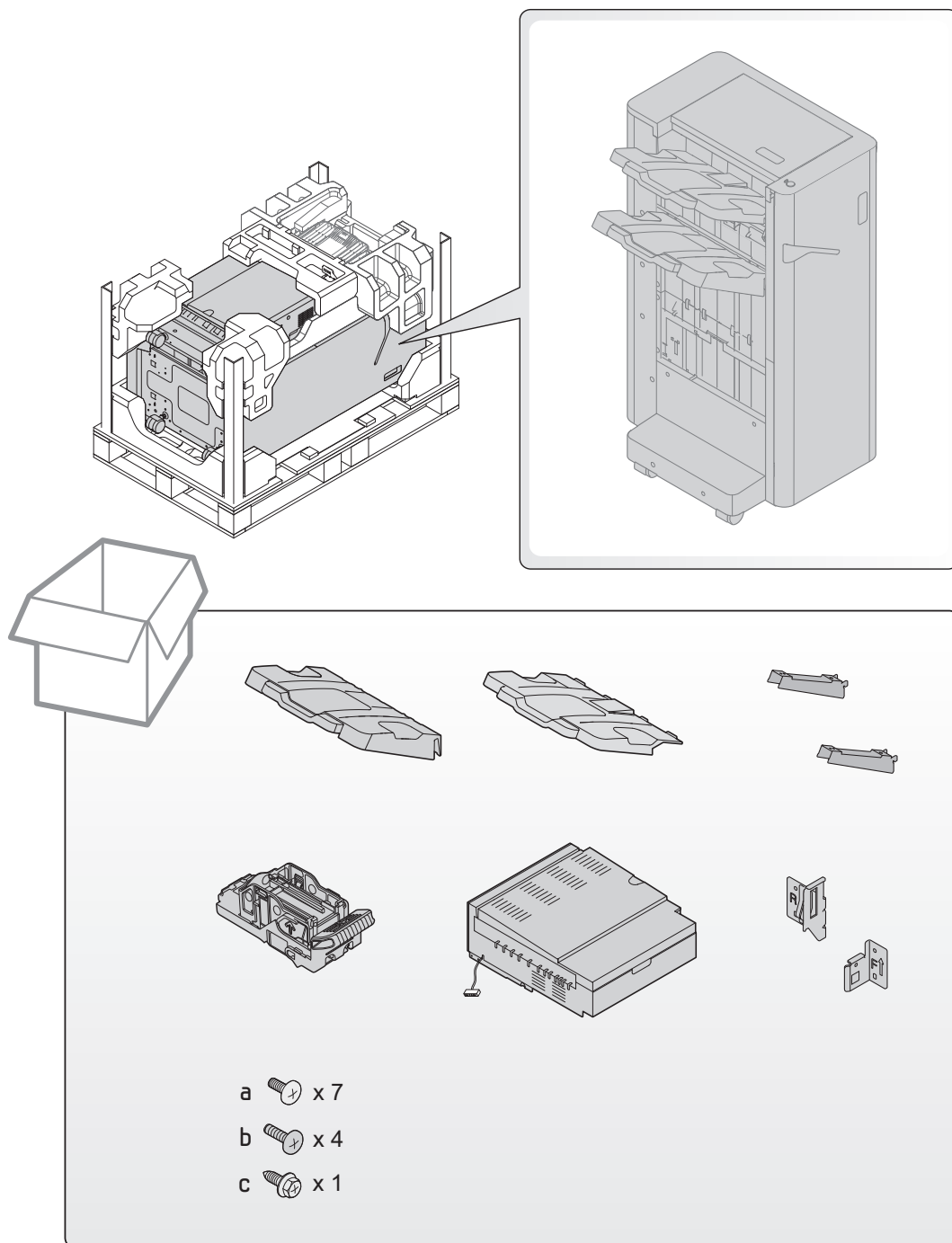


**SAMSUNG**

# High-volume Finisher Installation Guide

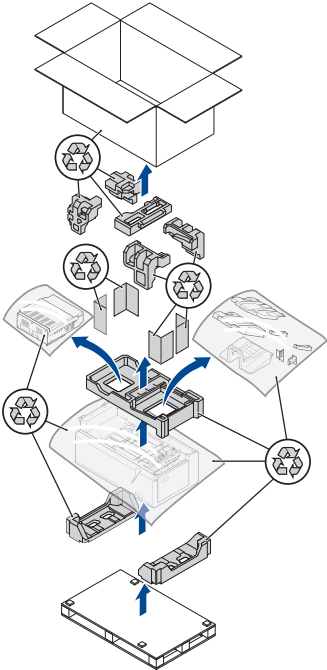
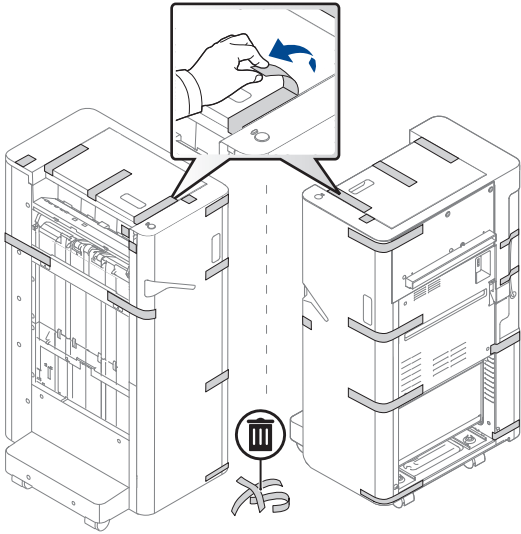
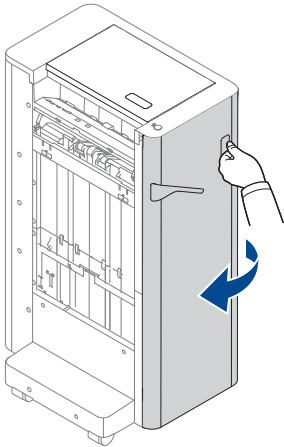
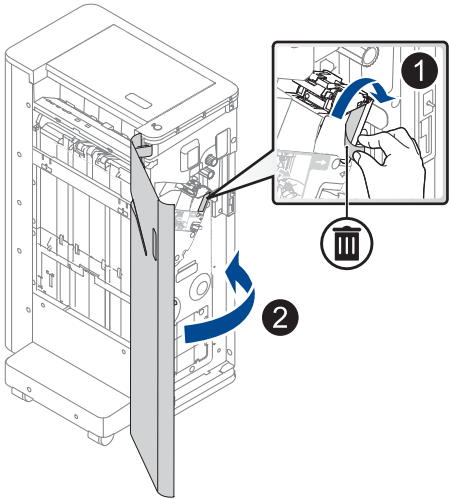


**SL-FIN701H**

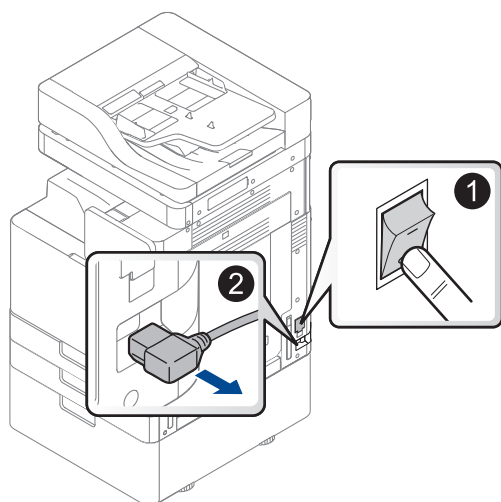


- X740x / X750x / X760x / K740x / K750x / K760x / K765x series 2
- X422x / X425x / X430x / K425x / K430x / K435x series 11

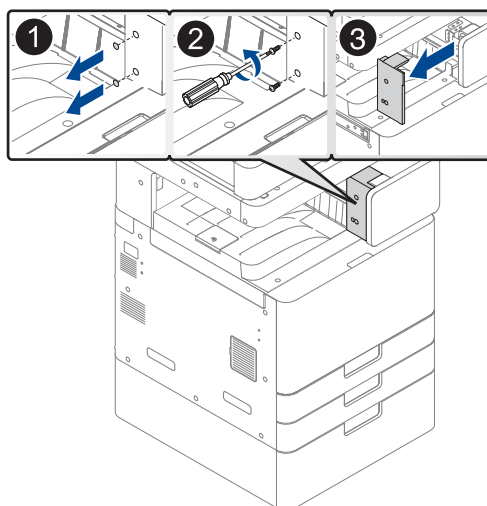
X740x / X750x / X760x / K740x / K750x / K760x / K765x series

1	2
 <p>This diagram shows the exploded view of the front panel assembly. It includes the main front panel, a top bezel, and several mounting brackets. Blue arrows indicate the assembly sequence: first, the mounting brackets are attached to the main panel, then the top bezel is added. Recycled material symbols (a triangle with arrows) are placed around the components to indicate they are made of recycled plastic.</p>	 <p>This diagram illustrates the front panel being attached to the main unit. A hand is shown sliding the top of the panel into a slot. An inset shows a close-up of the top edge being inserted. A dashed line indicates the alignment. A trash can icon with a diagonal line through it is shown below the panel, indicating that the old panel should be discarded.</p>
3	4
 <p>This diagram shows the front panel being closed. A hand is shown pressing the panel into the main unit. A blue arrow indicates the direction of movement.</p>	 <p>This diagram shows the front panel being opened. A hand is shown pulling the panel away from the main unit. A blue arrow indicates the direction of movement. An inset shows a close-up of the latch mechanism being released. The inset is numbered 1 and 2, indicating the sequence of actions. A trash can icon with a diagonal line through it is shown below the panel, indicating that the old panel should be discarded.</p>

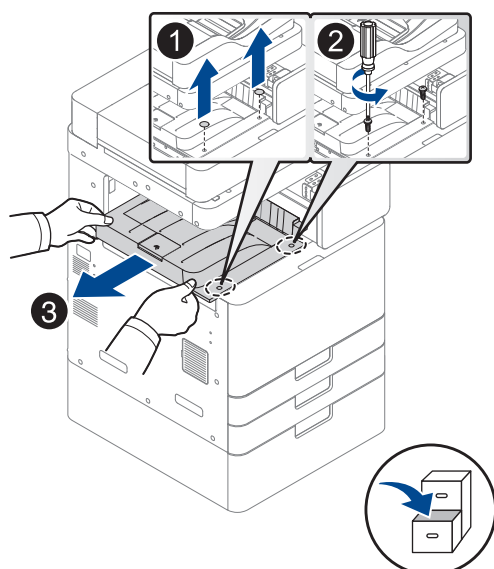
5



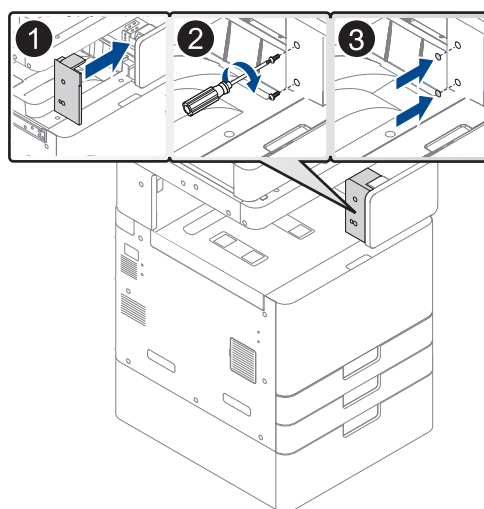
6



7

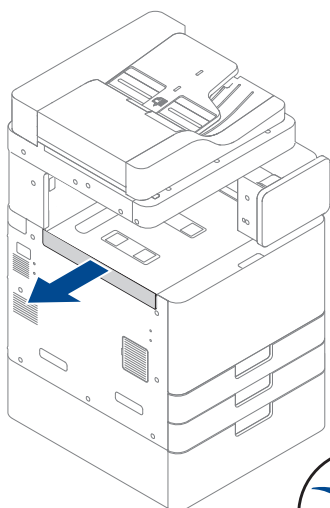


8

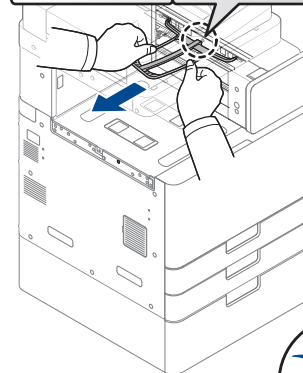
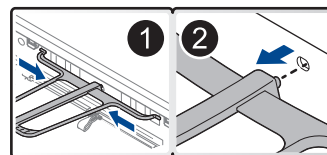




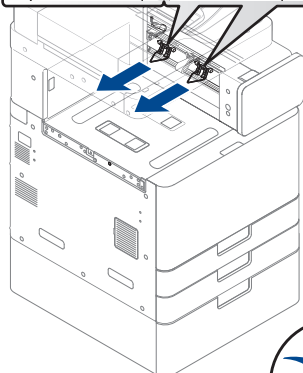
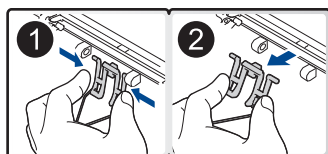
9



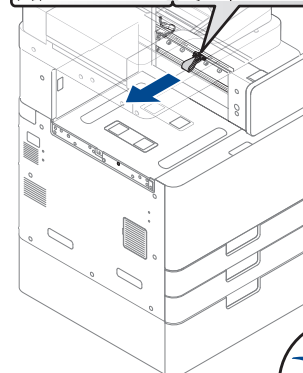
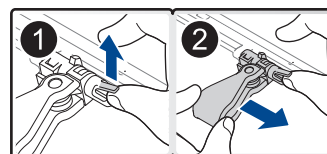
10



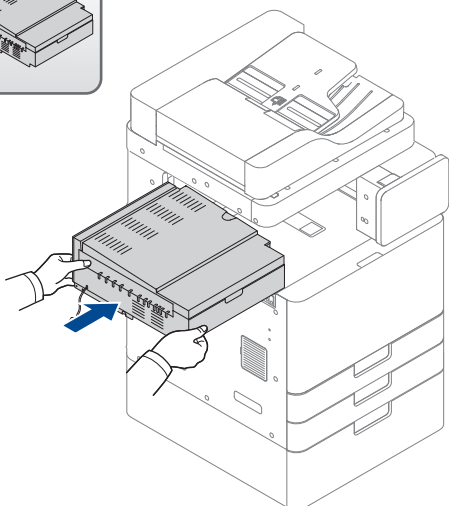
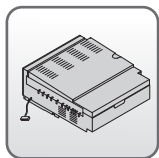
11



12

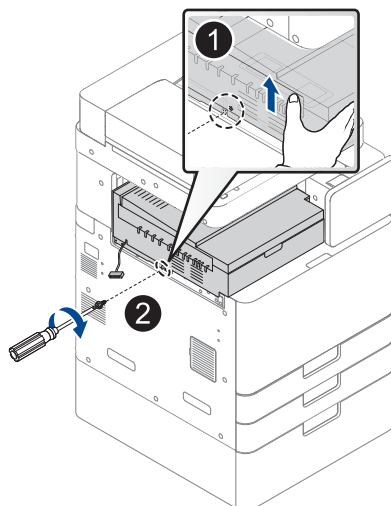


13

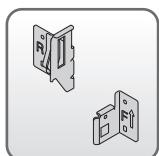


14

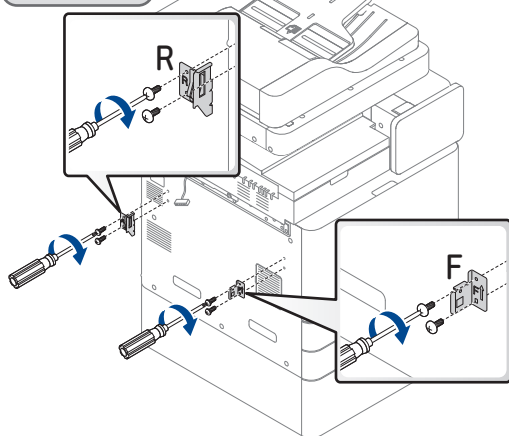
C x 1



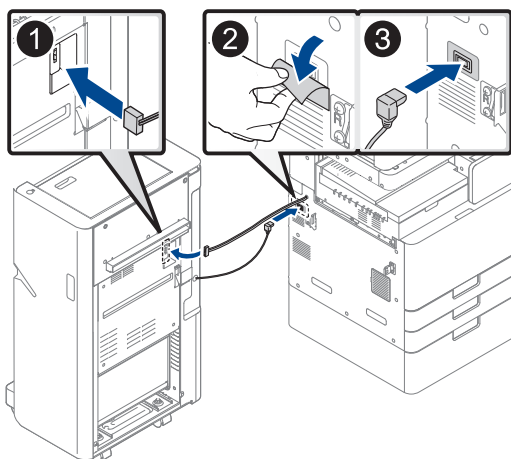
15



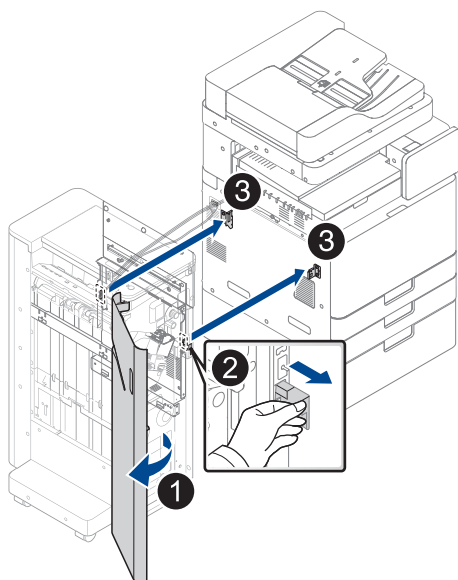
a x 4



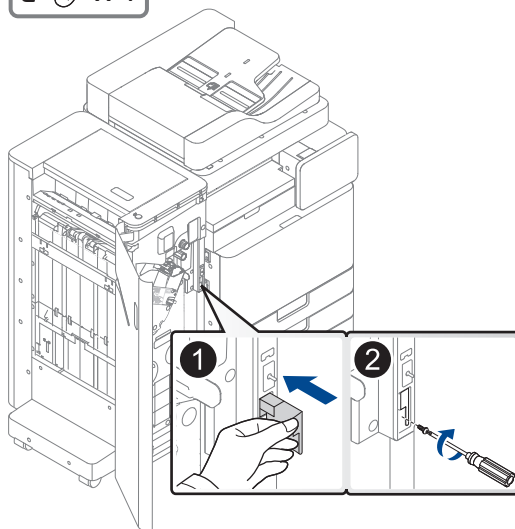
16



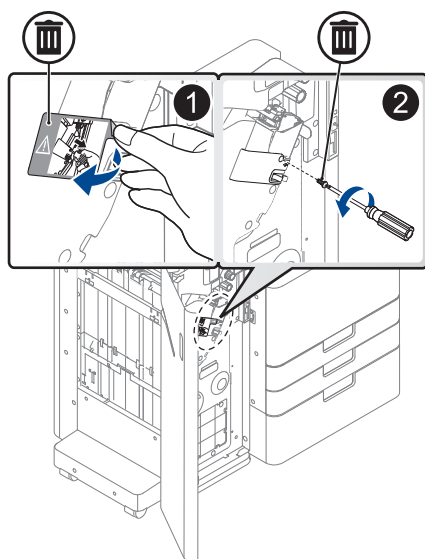
17



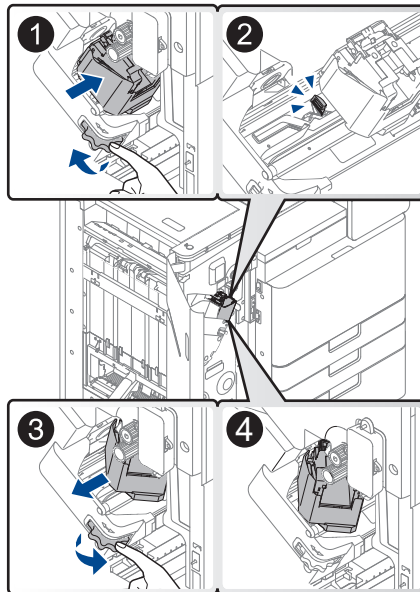
18

a  x 1

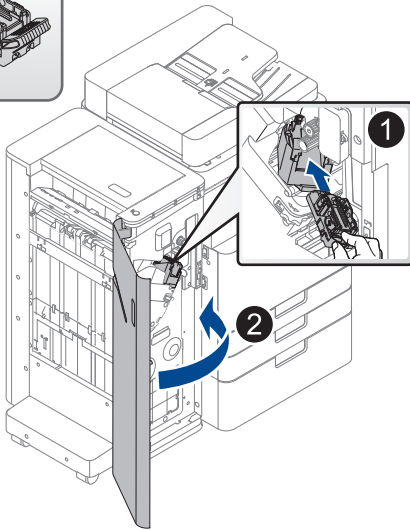
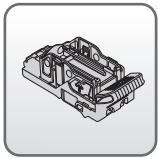
19



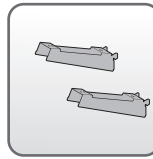
20



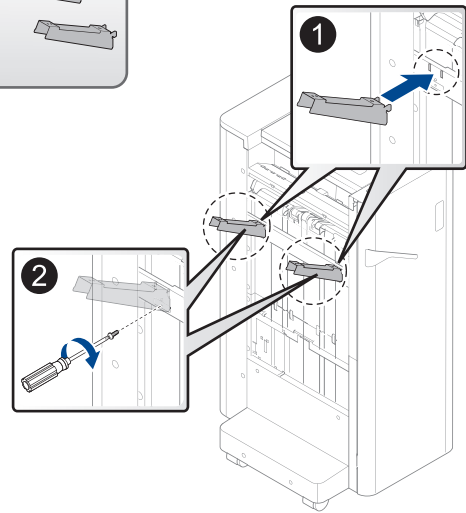
21



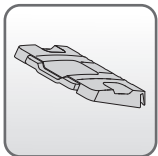
22



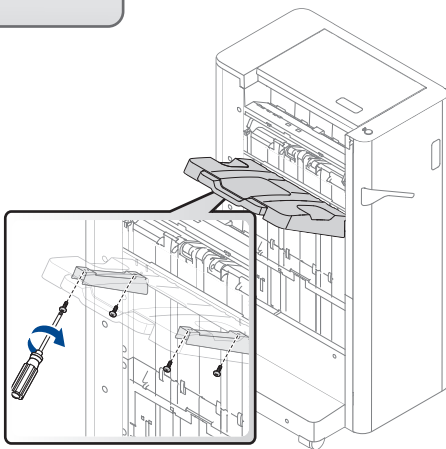
a x 2



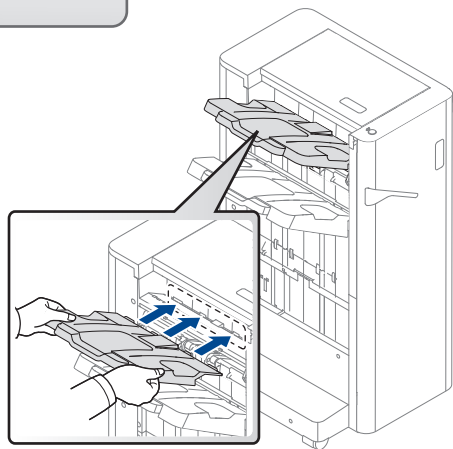
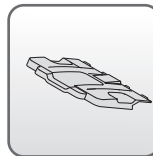
23

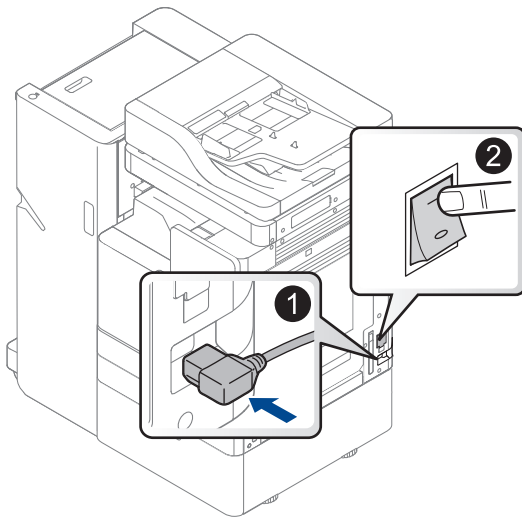


b x 4



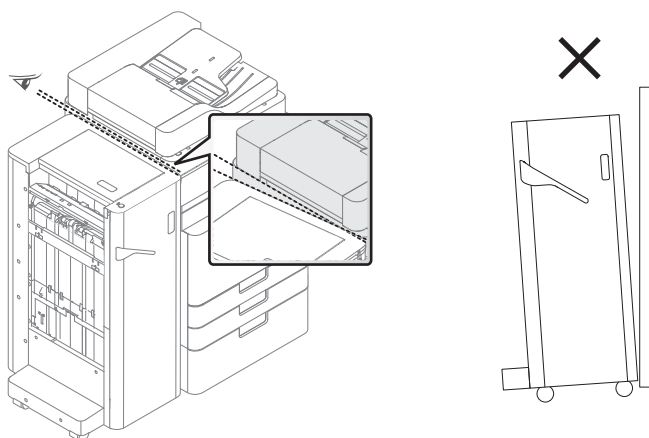
24



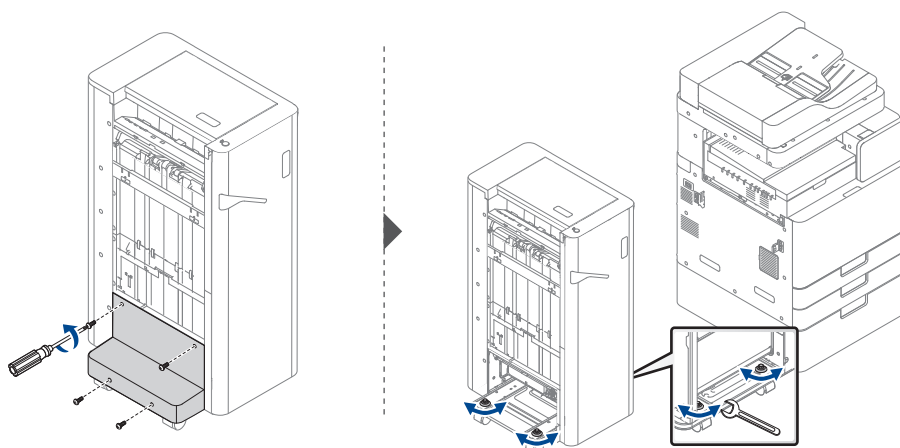


## Adjust1

- EN** If the machine and the finisher do not lineup correctly, adjust the height of the finisher by turning the casters underneath the finisher.
- DE** Falls Gerät und Finisher nicht ordnungsgemäß ausgerichtet sind, passen Sie die Höhe des Finishers an, indem Sie die Rollfüße unter dem Finisher drehen.
- FR** Si la machine et le finisseur ne sont pas correctement alignés, régler la hauteur du finisseur en tournant les molettes de roulettes sous le finisseur.
- IT** Se la macchina e il finisher non sono allineati correttamente, regolare l' altezza del finisher girando le ruote sotto il finisher.
- ES** Si la máquina y el finalizador no se alinean correctamente, ajuste la altura del finalizador girando las ruedas situadas debajo del finalizador.
- RU** При неправильном выравнивании машины и финишера отрегулируйте высоту финишера с помощью вращения нижних роликов финишера.
- KR** 제품과 피니셔가 정확히 정렬되지 않으면, 피니셔 아래쪽에 있는 바퀴를 돌려 피니셔의 높이를 조정하세요.
- CN** 如果机器和整理器未正确对齐，可转动整理器下方的轮脚，调整整理器的高度。



## Adjust2



## Adjust3

**EN** Case 1 (Turn the casters counterclockwise)

**DE** Fall 1 (Rollfüße nach links drehen)

**FR** Cas 1 (Tourner les molettes de roulettes dans le sens antihoraire)

**IT** Caso 1 (Rotazione delle ruote in senso antiorario)

**ES** Caso 1 (Gire las ruedas hacia la izquierda)

**RU** Случай 1 (Вращайте ролики против часовой стрелки)

**KR** 경우 1 (바퀴를 시계 반대 방향으로 돌림)

**CN** 情况 1 (逆时针转动轮脚)

**EN** Case 2 (Turn the casters clockwise)

**DE** Fall 2 (Rollfüße nach rechts drehen)

**FR** Cas 2 (Tourner les molettes de roulettes dans le sens horaire)

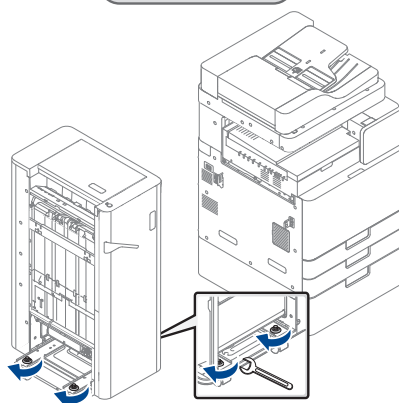
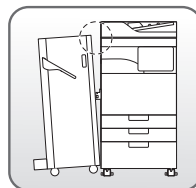
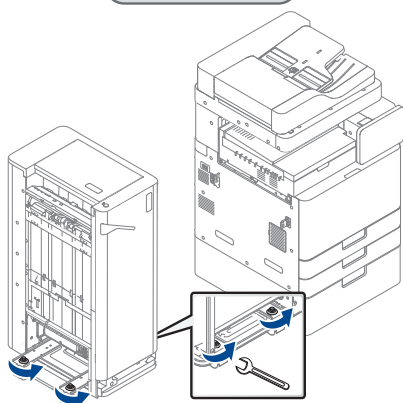
**IT** Caso 2 (Rotazione delle ruote in senso orario)

**ES** Caso 2 (Gire las ruedas hacia la derecha)

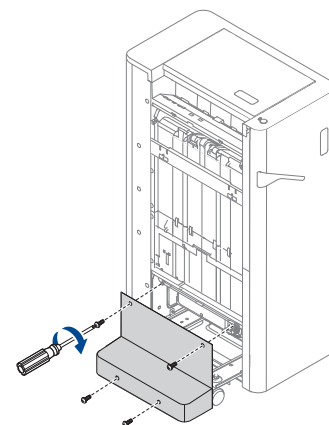
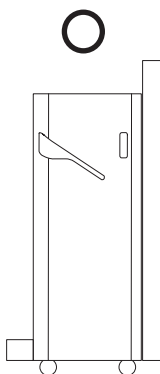
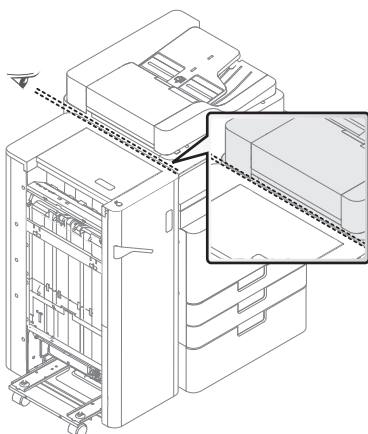
**RU** Случай 2 (Вращайте ролики по часовой стрелке)

**KR** 경우 2 (바퀴를 시계 방향으로 돌림)

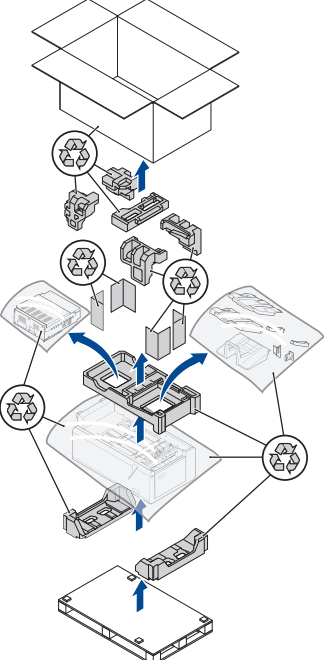
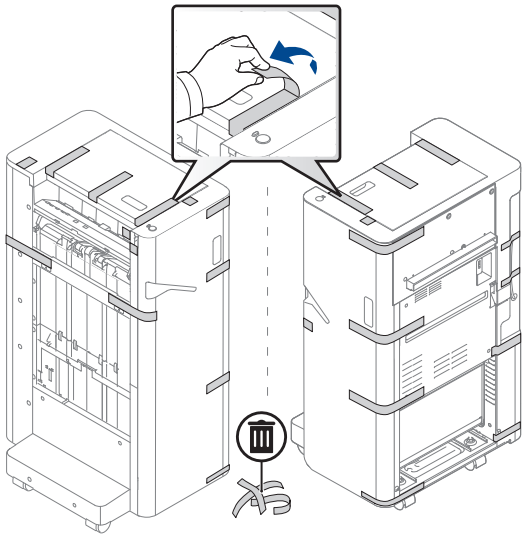
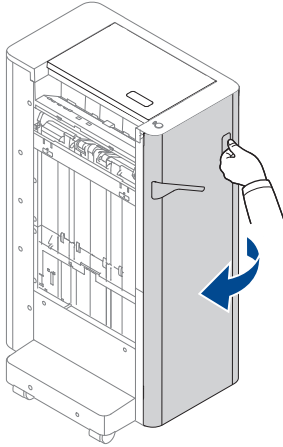
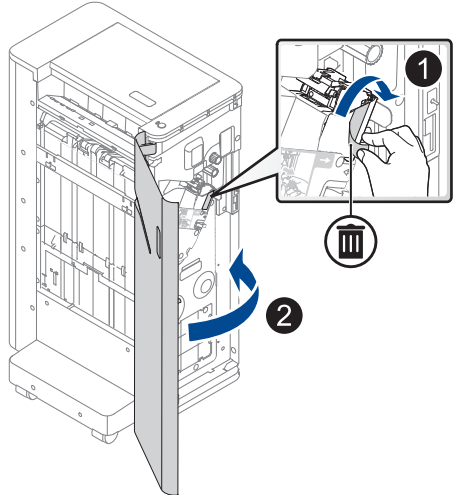
**CN** 情况 2 (顺时针转动轮脚)



## Adjust4

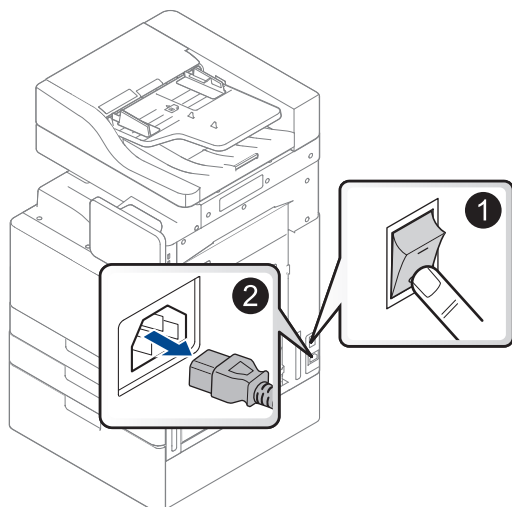


X422x / X425x / X430x / K425x / K430x / K435x series

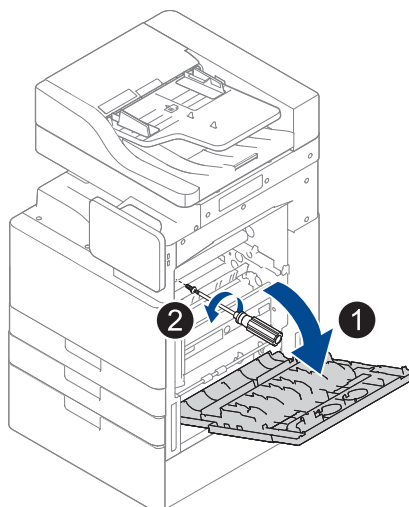
1	2
 <p>This diagram shows the exploded view of the front panel assembly. It includes the main front panel, a top cover, and various mounting brackets and screws. Blue arrows indicate the assembly sequence, starting from the base and moving upwards. Recycling symbols are placed around the components to indicate they are recyclable.</p>	 <p>This diagram illustrates the front panel being attached to the main unit. A hand is shown inserting the panel into the top of the unit. A callout shows a close-up of the panel being pushed into the top cover. A recycling symbol is shown below the unit.</p>
3	4
 <p>This diagram shows the front panel being closed. A hand is shown pulling the panel towards the unit. A blue arrow indicates the direction of movement.</p>	 <p>This diagram illustrates the front panel being opened. A hand is shown pulling the panel away from the unit. A blue arrow indicates the direction of movement. A callout shows a close-up of the panel being pulled away from the unit, with a recycling symbol shown below the unit.</p>



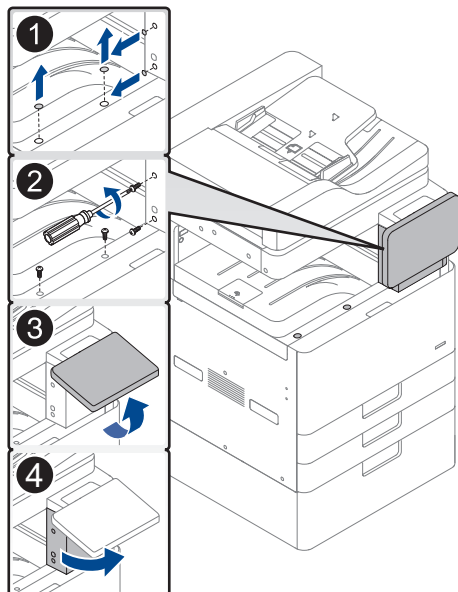
5



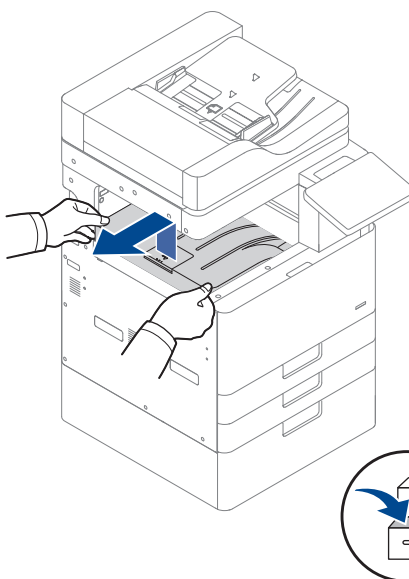
6



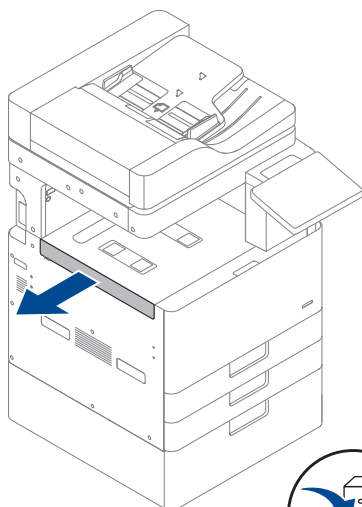
7



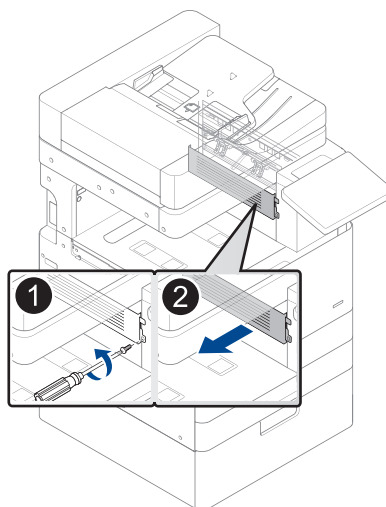
8



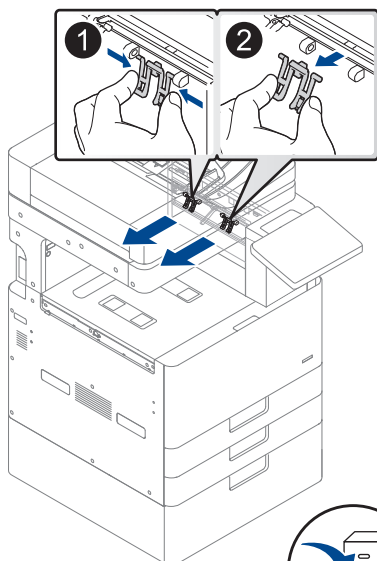
9



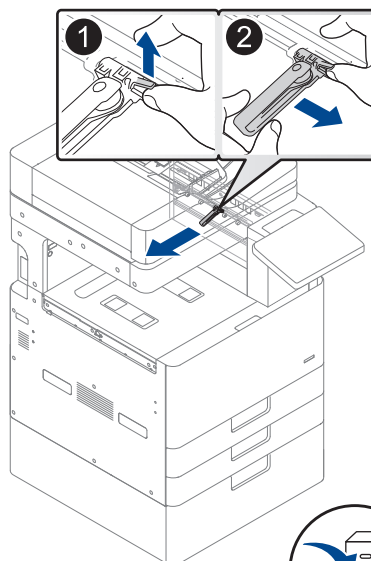
10



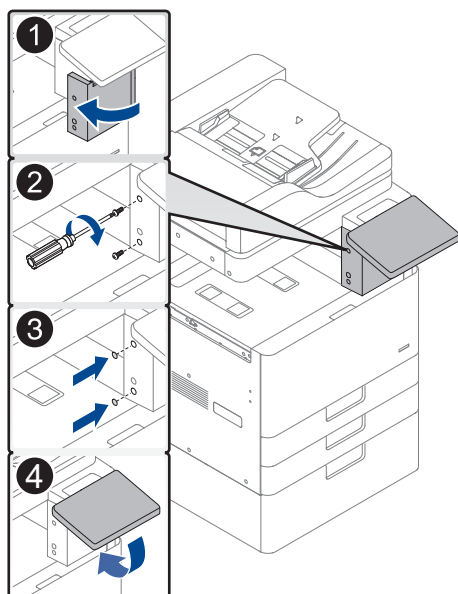
11



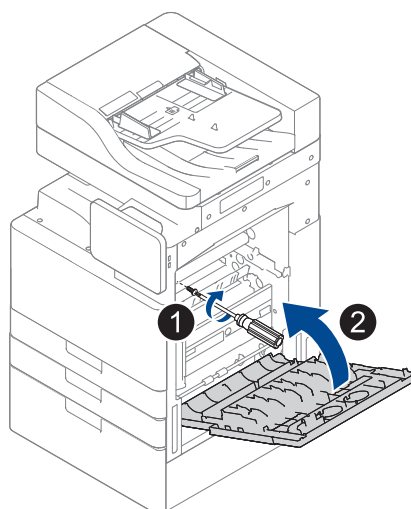
12



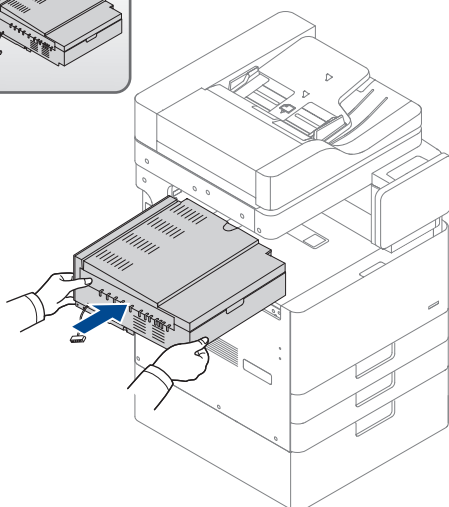
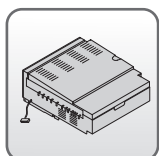
13



14

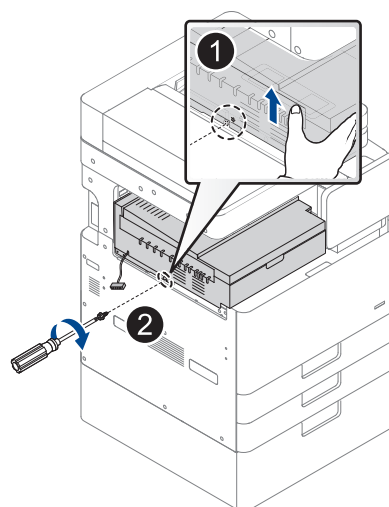


15

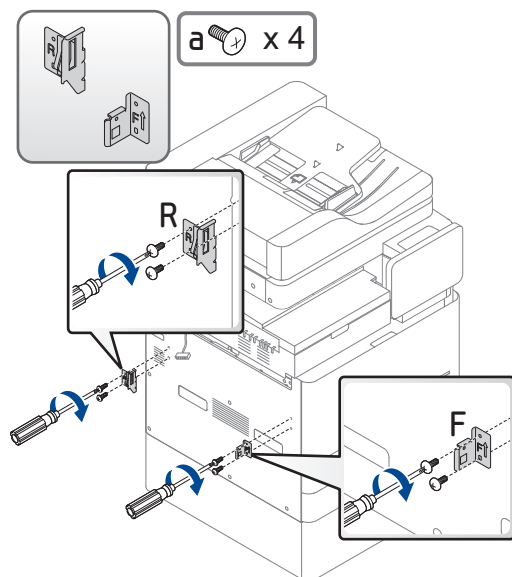


16

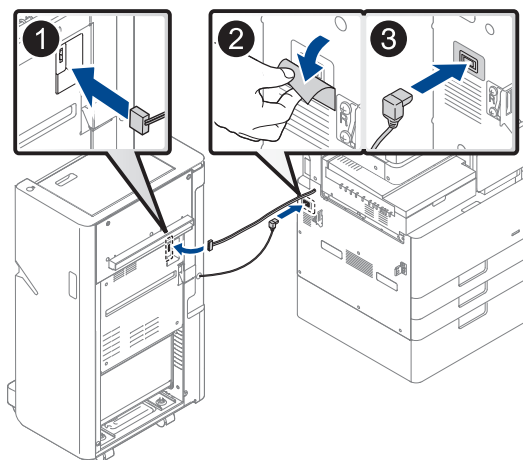
C x 1



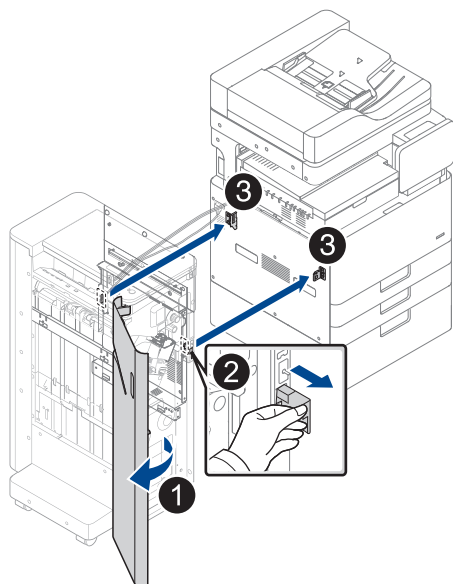
17



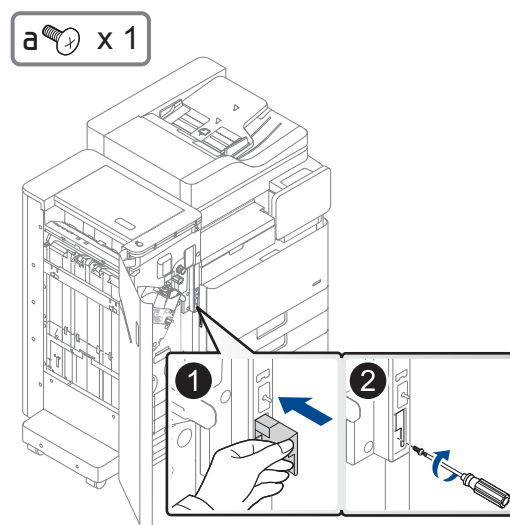
18



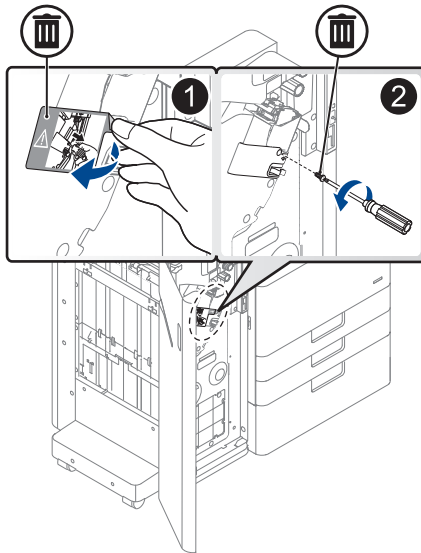
19



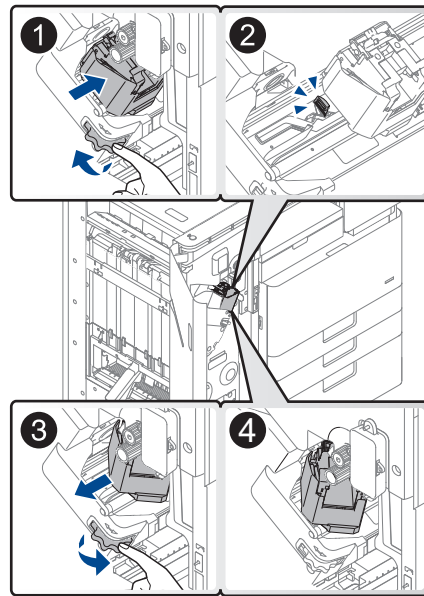
20



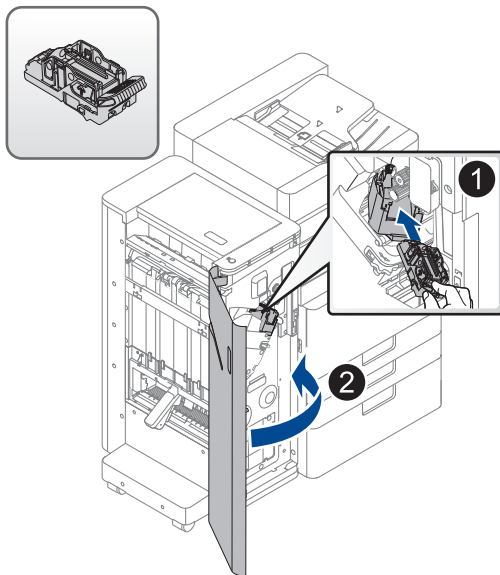
21



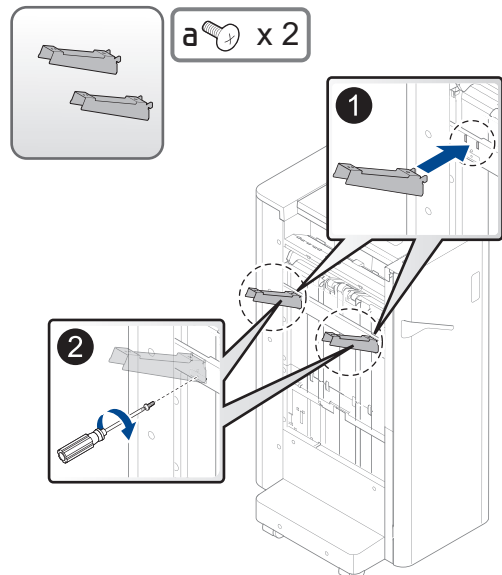
22



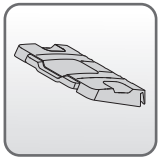
23



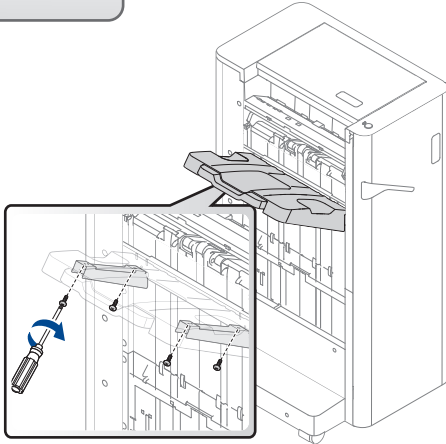
24



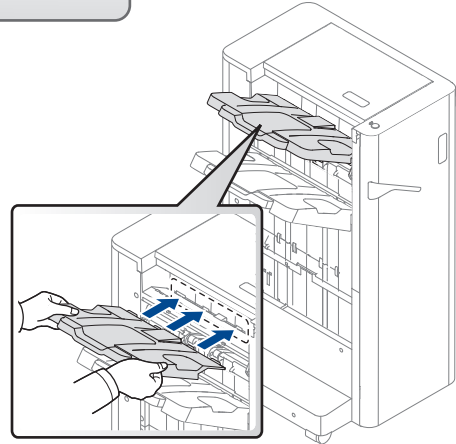
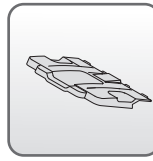
25



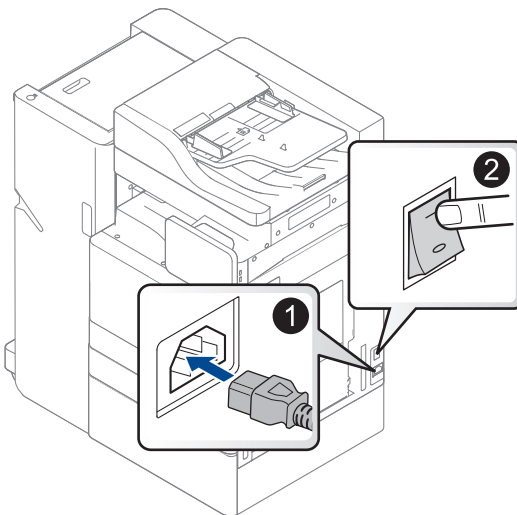
b x 4



26

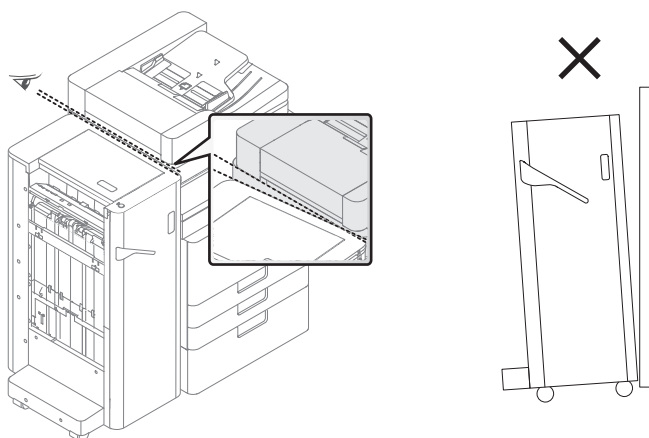


27

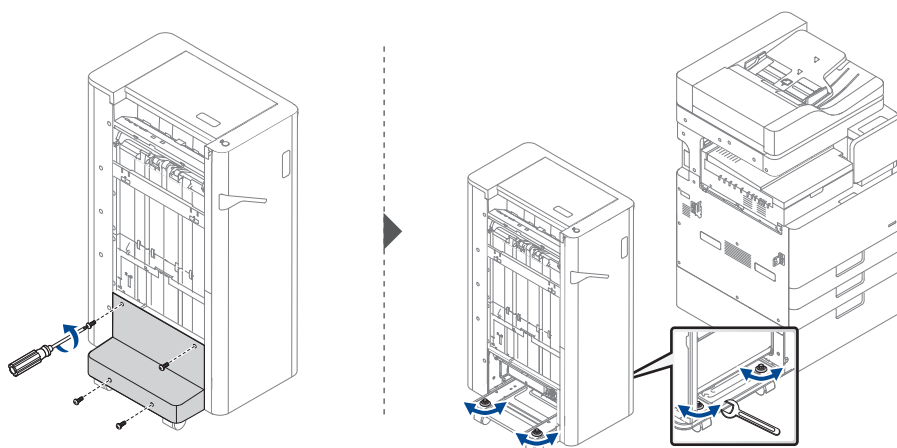


## Adjust1

- EN** If the machine and the finisher do not lineup correctly, adjust the height of the finisher by turning the casters underneath the finisher.
- DE** Falls Gerät und Finisher nicht ordnungsgemäß ausgerichtet sind, passen Sie die Höhe des Finishers an, indem Sie die Rollfüße unter dem Finisher drehen.
- FR** Si la machine et le finisseur ne sont pas correctement alignés, régler la hauteur du finisseur en tournant les molettes de roulettes sous le finisseur.
- IT** Se la macchina e il finisher non sono allineati correttamente, regolare l' altezza del finisher girando le ruote sotto il finisher.
- ES** Si la máquina y el finalizador no se alinean correctamente, ajuste la altura del finalizador girando las ruedas situadas debajo del finalizador.
- RU** При неправильном выравнивании машины и финишера отрегулируйте высоту финишера с помощью вращения нижних роликов финишера.
- KR** 제품과 피니셔가 정확히 정렬되지 않으면, 피니셔 아래쪽에 있는 바퀴를 돌려 피니셔의 높이를 조정하세요.
- CN** 如果机器和整理器未正确对齐，可转动整理器下方的轮脚，调整整理器的高度。



## Adjust2



## Adjust3

**EN** Case 1 (Turn the casters counterclockwise)

**DE** Fall 1 (Rollfüße nach links drehen)

**FR** Cas 1 (Tourner les molettes de roulettes dans le sens antihoraire)

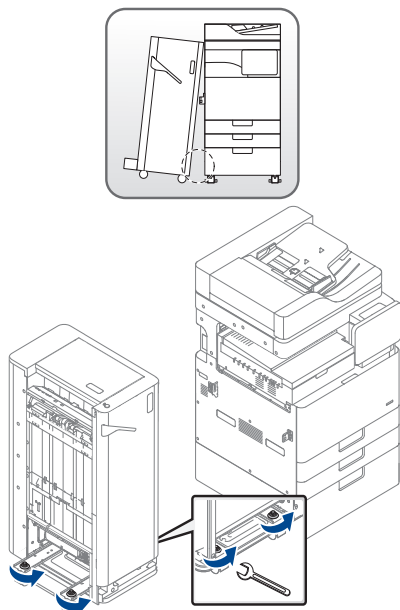
**IT** Caso 1 (Rotazione delle ruote in senso antiorario)

**ES** Caso 1 (Gire las ruedas hacia la izquierda)

**RU** Случай 1 (Вращайте ролики против часовой стрелки)

**KR** 경우 1 (바퀴를 시계 반대 방향으로 돌림)

**CN** 情况 1 (逆时针转动轮脚)



**EN** Case 2 (Turn the casters clockwise)

**DE** Fall 2 (Rollfüße nach rechts drehen)

**FR** Cas 2 (Tourner les molettes de roulettes dans le sens horaire)

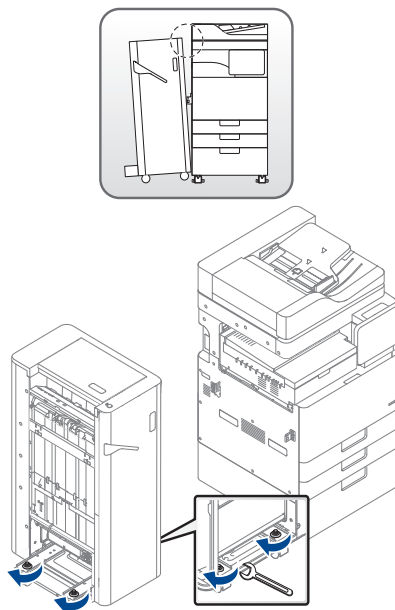
**IT** Caso 2 (Rotazione delle ruote in senso orario)

**ES** Caso 2 (Gire las ruedas hacia la derecha)

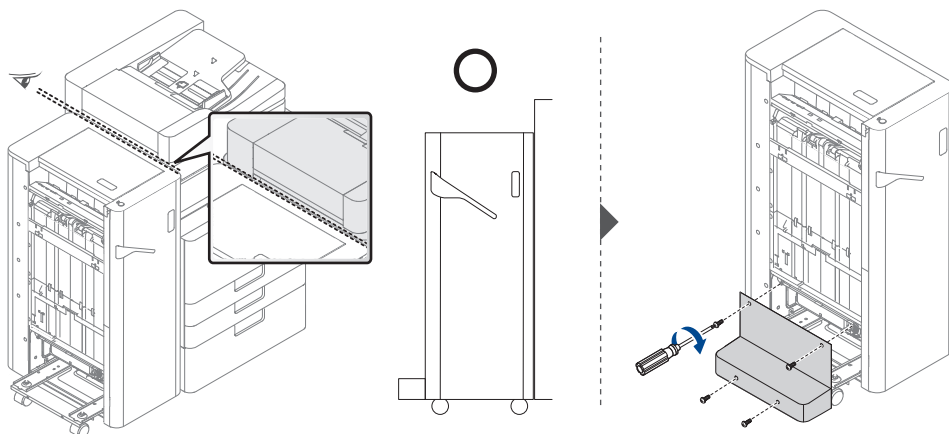
**RU** Случай 2 (Вращайте ролики по часовой стрелке)

**KR** 경우 2 (바퀴를 시계 방향으로 돌림)

**CN** 情况 2 (顺时针转动轮脚)



## Adjust4





The Samsung logo, consisting of the word "SAMSUNG" in a bold, sans-serif font, is centered within a white oval. This oval is positioned on the left side of a dark gray rectangular background that occupies the top left portion of the page.

**SAMSUNG**

SAMSUNG ELECTRONICS CO., LTD.

Copyright © 2015 by Samsung Electronics Co., Ltd. All Rights Reserved.

[www.samsung.com](http://www.samsung.com)



JC68-03368A02