



SAMSUNG

Installation Guide

3,250-Sheet Booklet Finisher (CLX-FIN40L)



CLX-9250 9350 Series

Copyright

Copyright © 2010 Samsung Electronics Co., Ltd. All rights reserved.

This guide is provided for information purposes only. All information included herein is subject to change without notice.

Samsung Electronics is not responsible for any direct or indirect damages, arising from or related to use of this guide.

- Samsung and Samsung logo are trademarks of Samsung Electronics Co., Ltd.
- All other brand or product names are trademarks of their respective companies or organizations.

REV. 1.00

Contents

ABOUT THIS GUIDE

3,250-SHEET BOOKLET FINISHER (CLX-FIN40L)

Installing the booklet finisher	5
Screws for assembling the booklet finisher	6
Removing the exit tray, duplex tray and flappers	7
Installing the bridge unit (CLX-BRG200)	11
Assembling the spacer	15
Installing the finisher	24
Separating the finisher	31

Regulatory information

This machine is designed for your sound environment and certified with several regulatory statements.

Correct Disposal of This Product (Waste Electrical & Electronic Equipment)

(Applicable in the European Union and other European countries with separate collection systems)



This marking on the product, accessories or literature indicates that the product and its electronic accessories (e.g. charger, headset, USB cable) should not be disposed of with other household waste at the end of their working life. To prevent possible harm to the environment or human health from uncontrolled waste disposal, please separate these items from other types of waste and recycle them responsibly to promote the sustainable reuse of material resources.

Household users should contact either the retailer where they purchased this product, or their local government office, for details of where and how they can take these items for environmentally safe recycling.

Business users should contact their supplier and check the terms and conditions of the purchase contract. This product and its electronic accessories should not be mixed with other commercial wastes for disposal.

About this guide

Thank you for purchasing Samsung's finisher. This installation guide will guide you in how to prepare and setup the finisher.

To prevent machine failure, follow the setup procedure and installation order precisely.

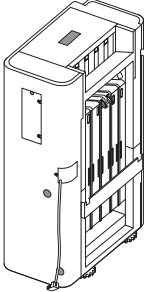
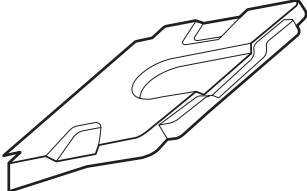
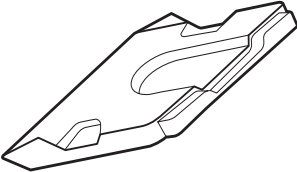
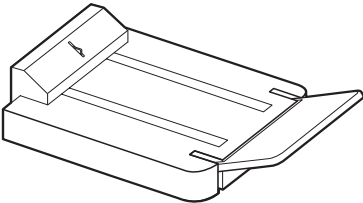
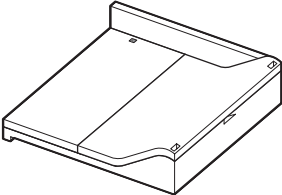
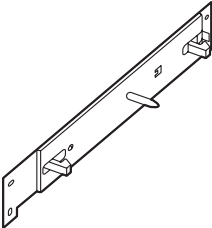


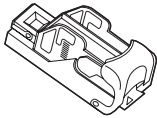
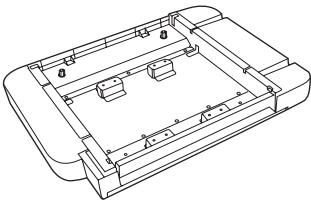
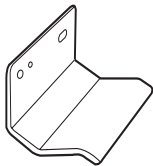

The illustrations in this installation guide may differ from your machine. However, the setup is the same for all models. Follow the steps in this guide.

3,250-Sheet Booklet Finisher (CLX-FIN40L)

Installing the booklet finisher




Make sure you have all of the following items.

BOOKLET FINISHER 	FINISHER TRAY 
TOP TRAY 	BOOKLET TRAY 
BRIDGE UNIT (CLX-BRG200) 	MOUNTING BRACKET 

<p>STAPLER CARTRIDGE</p> 	<p>SPACER</p> 
<p>STEEL GUIDE</p> 	<p>FINISHER LEG</p> 

Screws for assembling the booklet finisher

This table shows the screws to be used for assembling the booklet finisher.

NO	SCREW NAME	QUANTITY	WHERE TO USE	FIGURE
1	Screw-Machine [M4x12]	2	Finisher tray	
		4	Mounting bracket	
		4	Spacer	
		2	Steel guide	
2	Screw-Tapping [M4x10]	2	Booklet tray	
3	Screw-Taptite [M3x8]	2	Bridge unit	

Removing the exit tray, duplex tray and flappers

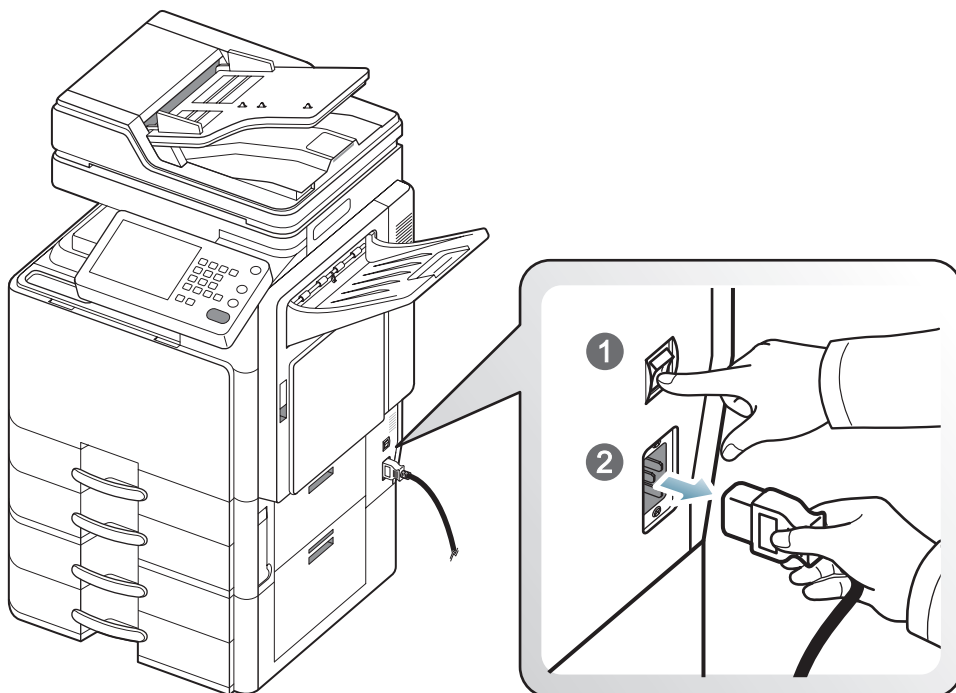
You need to remove the exit tray and duplex tray before installing the booklet finisher.

1. If the machine is turned on, press the **Power** button for more than two seconds on the right side of the control panel. When the confirmation window appears, press **Yes** from the display screen, then wait until power is turned off automatically.

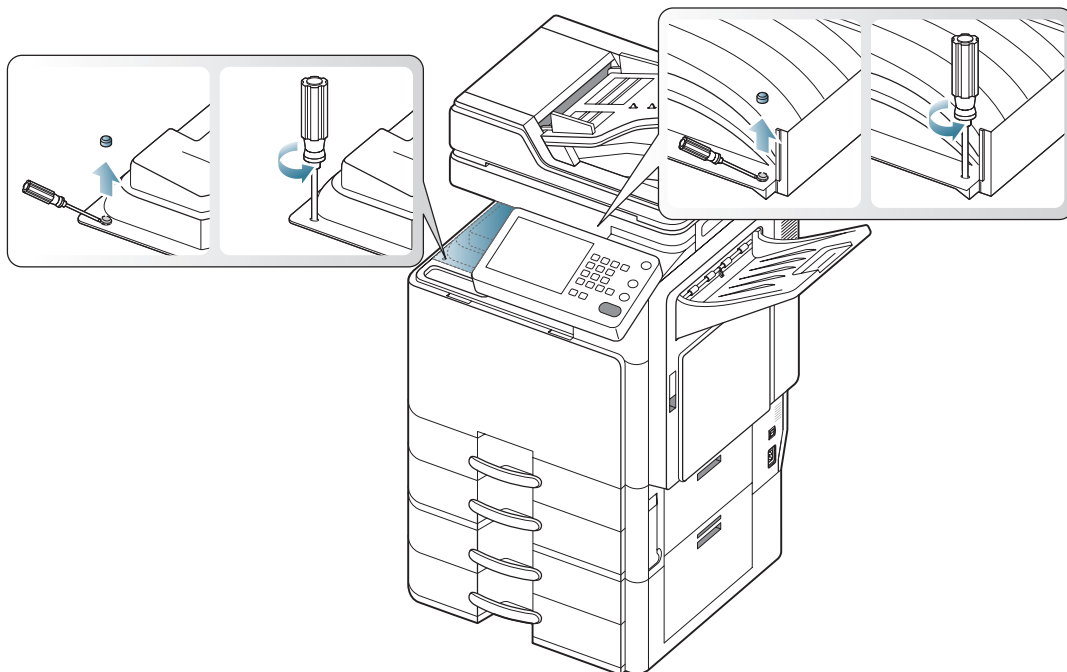


If you skip this step, it could cause the hard disk problem in the machine.

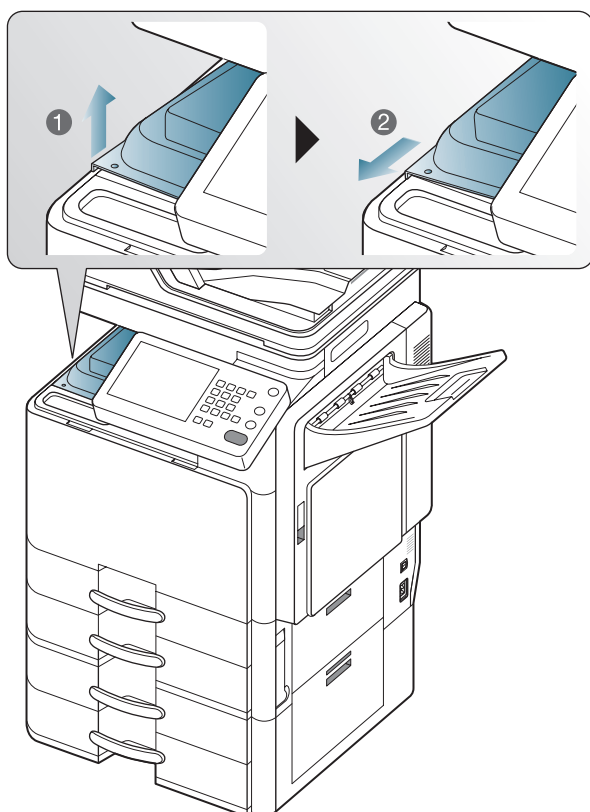
2. Turn the machine off and unplug all the cables from the machine.



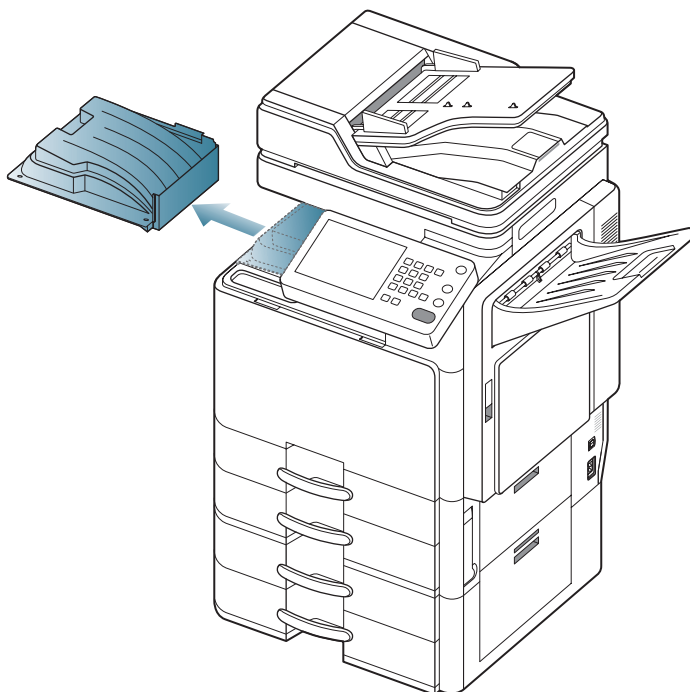
3. Loosen the two screws from the exit tray. If the rubber packings are blocking the screw holes, remove them first.



4. Lift up the exit tray and pull it slightly to the direction of the arrow as shown below.



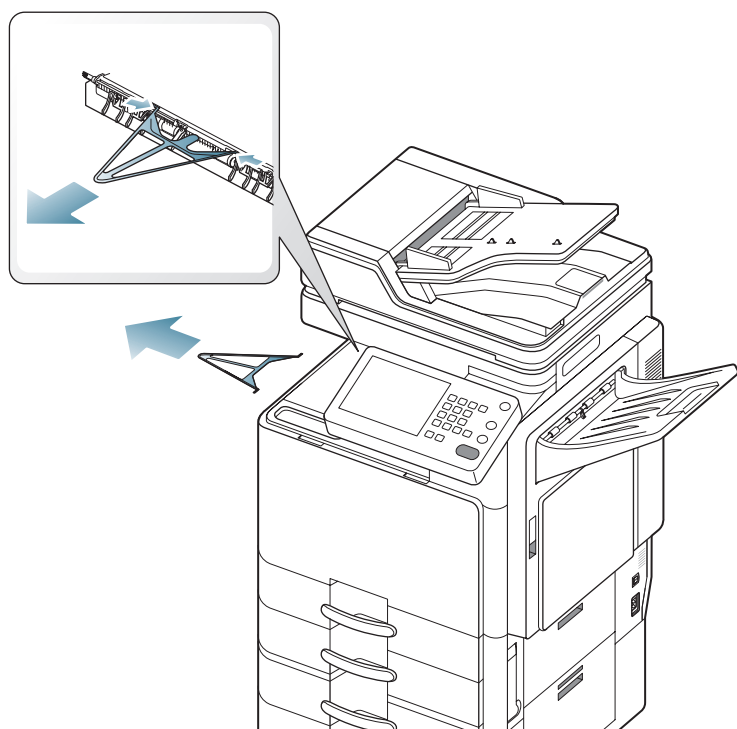
5. Hold the exit tray and pull it out to the direction of the arrow as shown below.



6. Remove the duplex tray in the exit area, pushing both sides of it as the small arrows shown below.



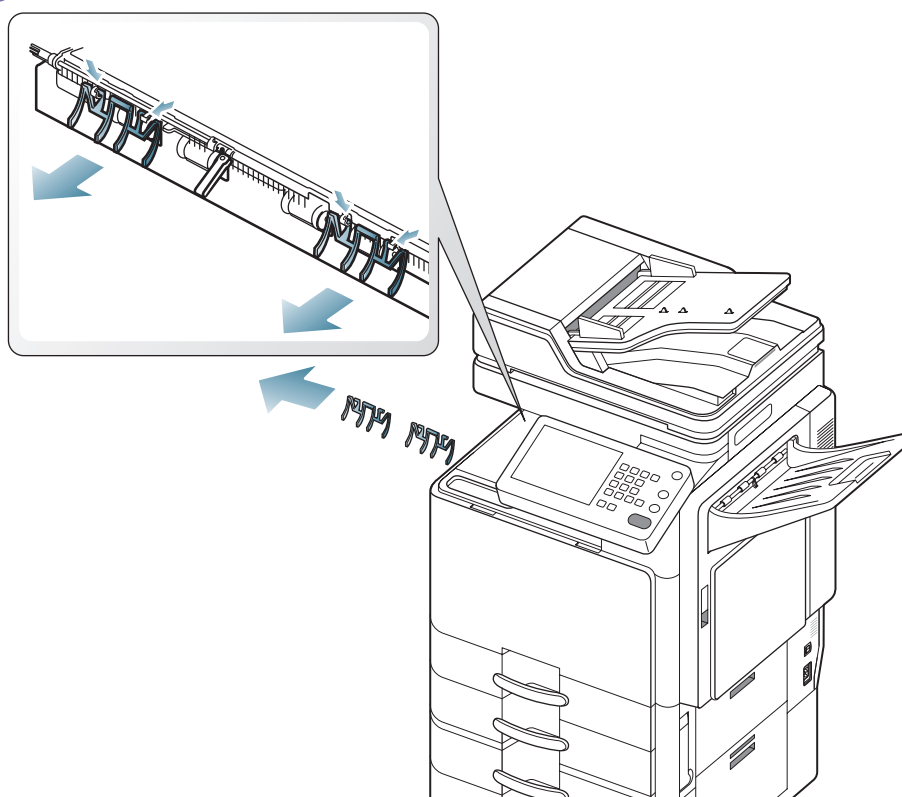
For SCX-8040_8030 Series, skip this step and go to step 8.



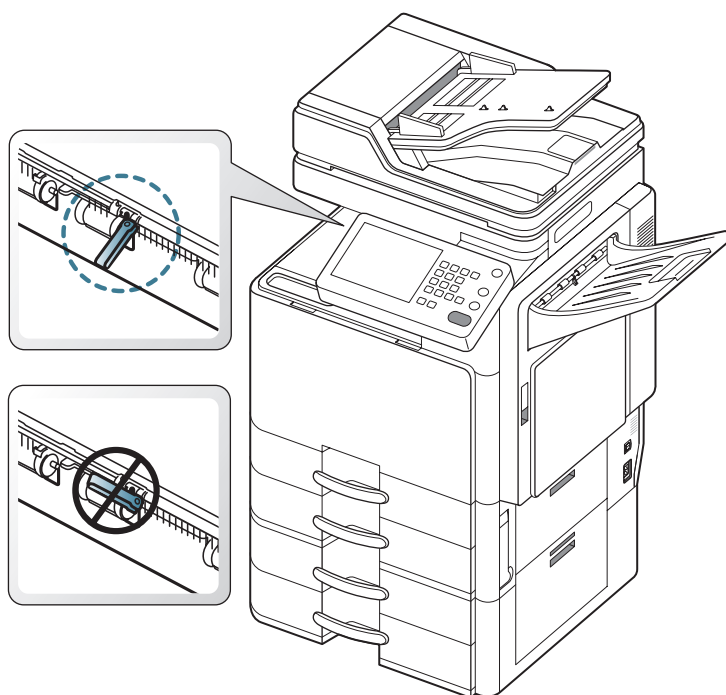
7. Remove the two flappers in the exit area, pushing both sides of each flapper as the small arrows shown below.



For CLX-9250 Series, skip this step and go to step 8.

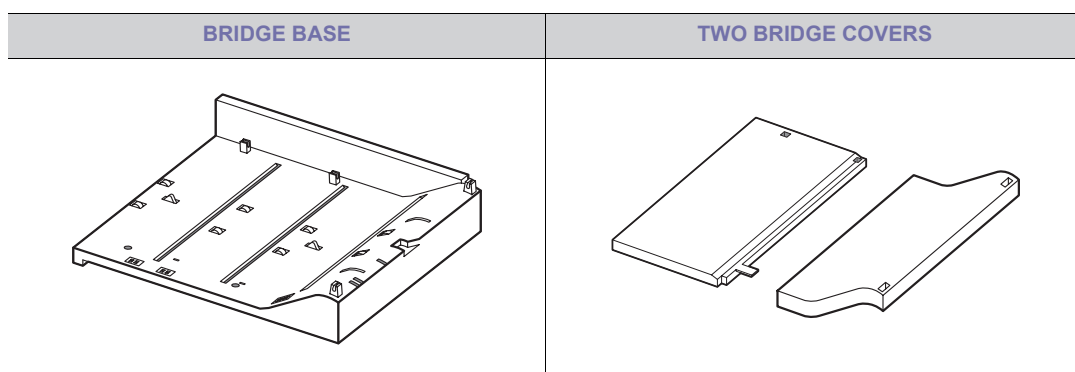


8. Make sure the bin full sensor is unfolded. Otherwise, it may cause paper jams.

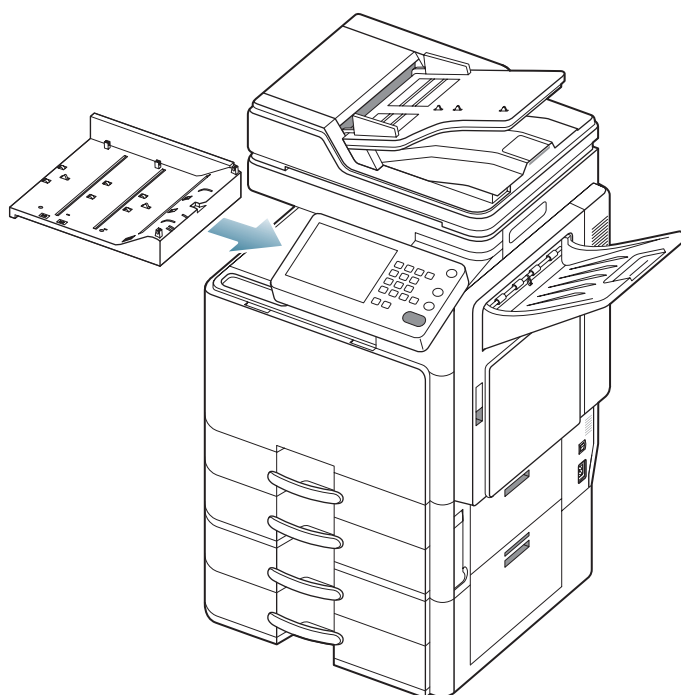


Installing the bridge unit (CLX-BRG200)

1. Unpack the bridge unit.
Make sure you have all of the following items.

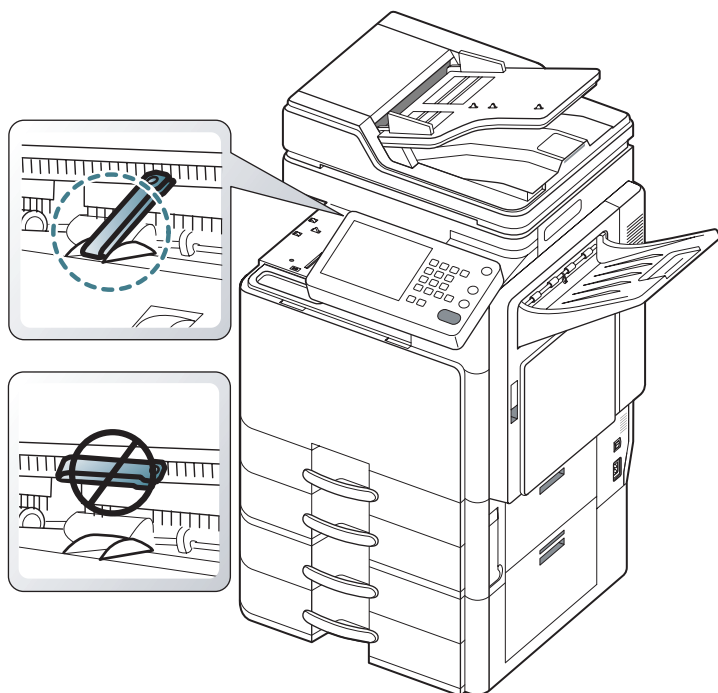


2. Insert the bridge base into the corresponding position where exit tray was placed.

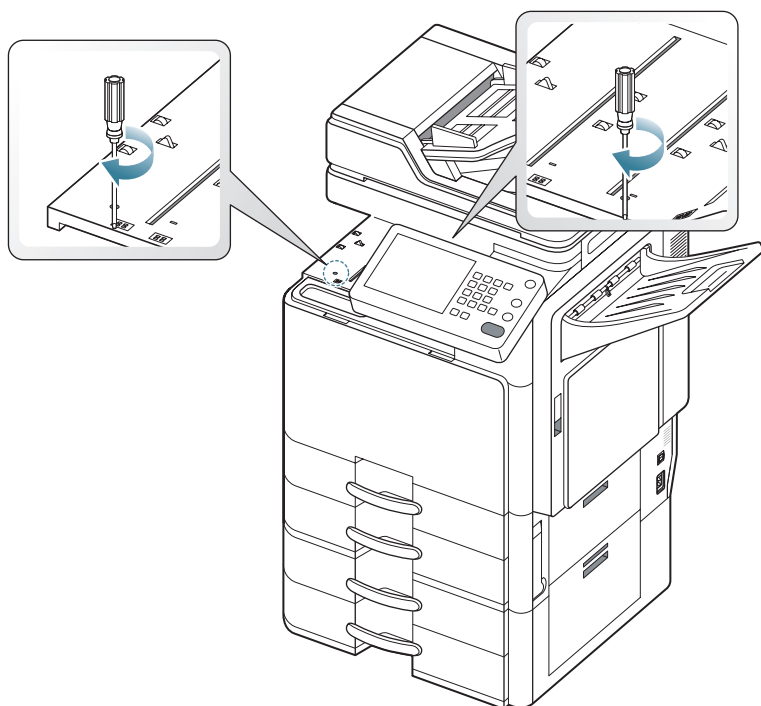




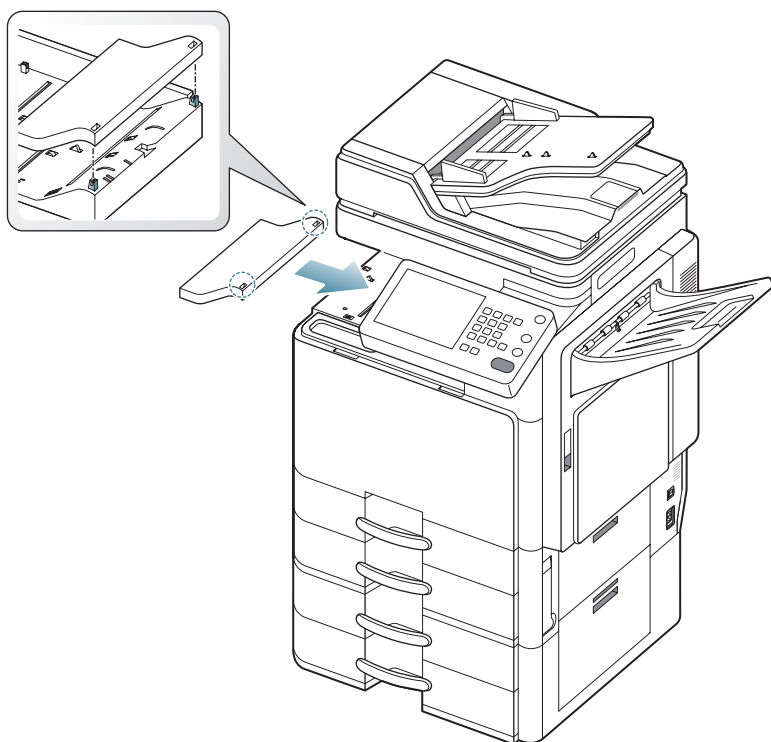
After inserting the bridge base, make sure the location of bin full sensor is in the right position as shown below.



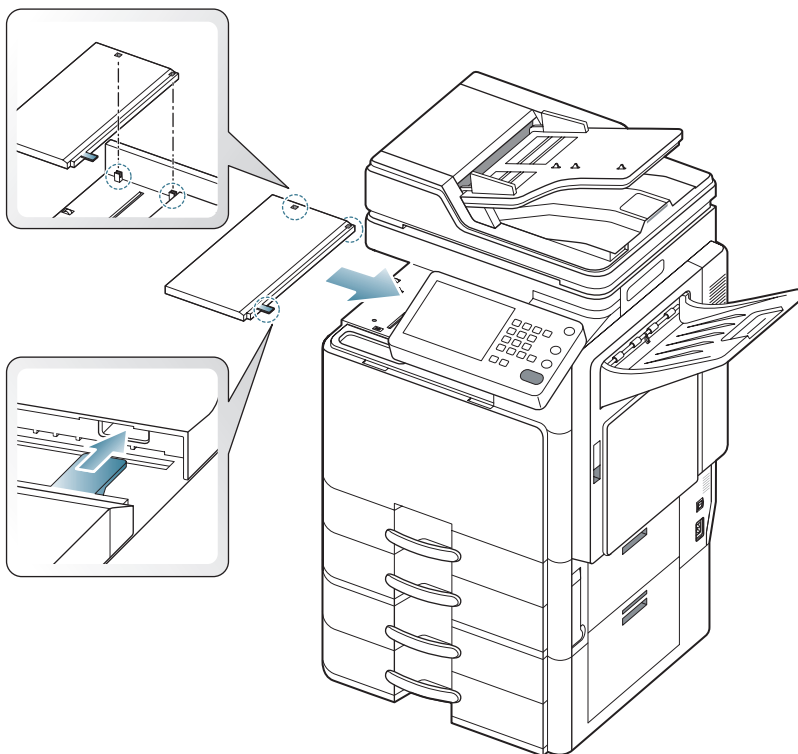
3. Tighten the two screws (Screw-Taprite [M3x8]).



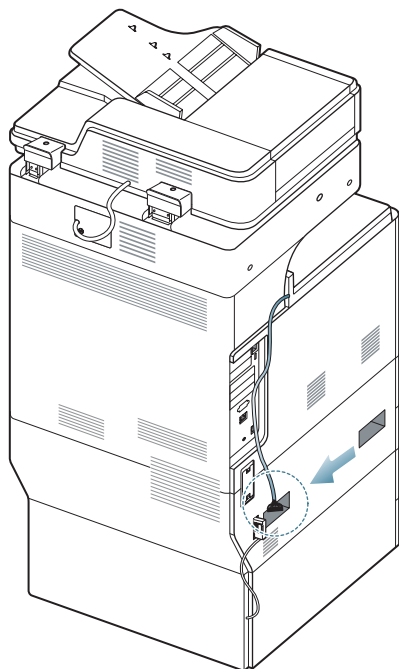
4. Insert the curved bridge cover until it clicks into the place.



5. Insert the location pin of the flat bridge cover to the hole of curved bridge cover until it clicks into place.



6. The bridge cable should be connected to the finisher after installing the finisher (See "Connect the bridge cable to the upper connector." on page26).



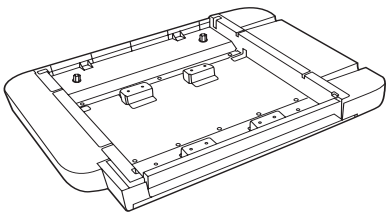

Assembling the spacer

1. Unpack the spacer.

Ensure the following items are included in the box:

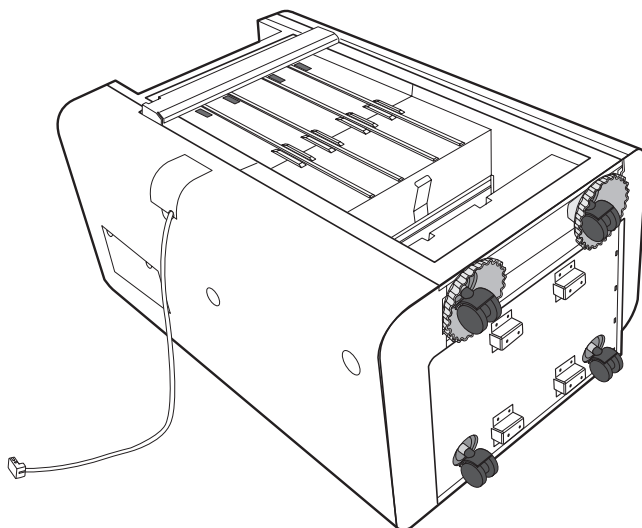


For SCX-8040_8030 Series, skip this step and go to step 8.

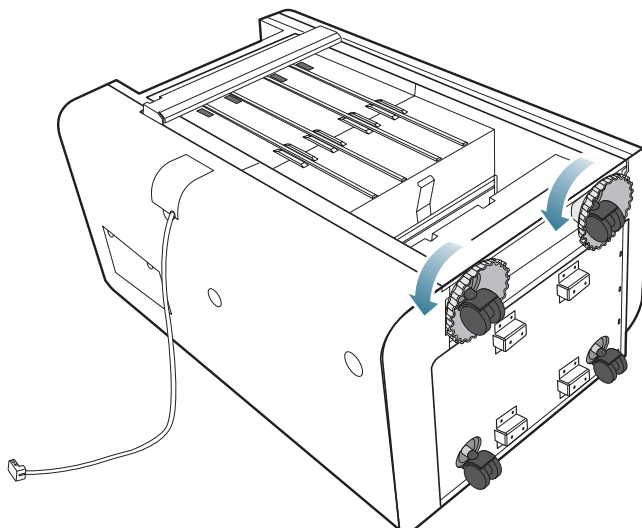
SPACER	FINISHER LEG ^a
	

a. The finisher leg prevents the finisher from leaning when the booklet maker is opened (See page 20).

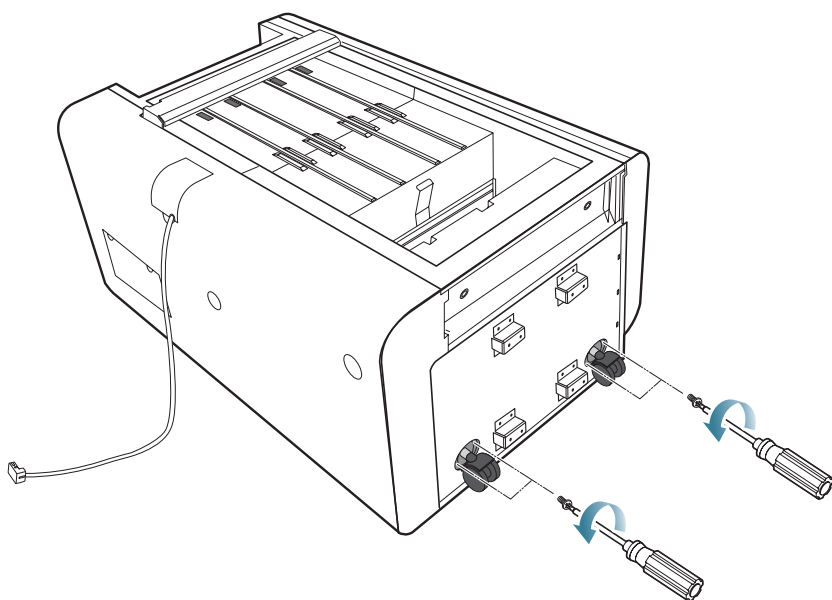
2. Lay the booklet finisher down carefully on the flat floor.



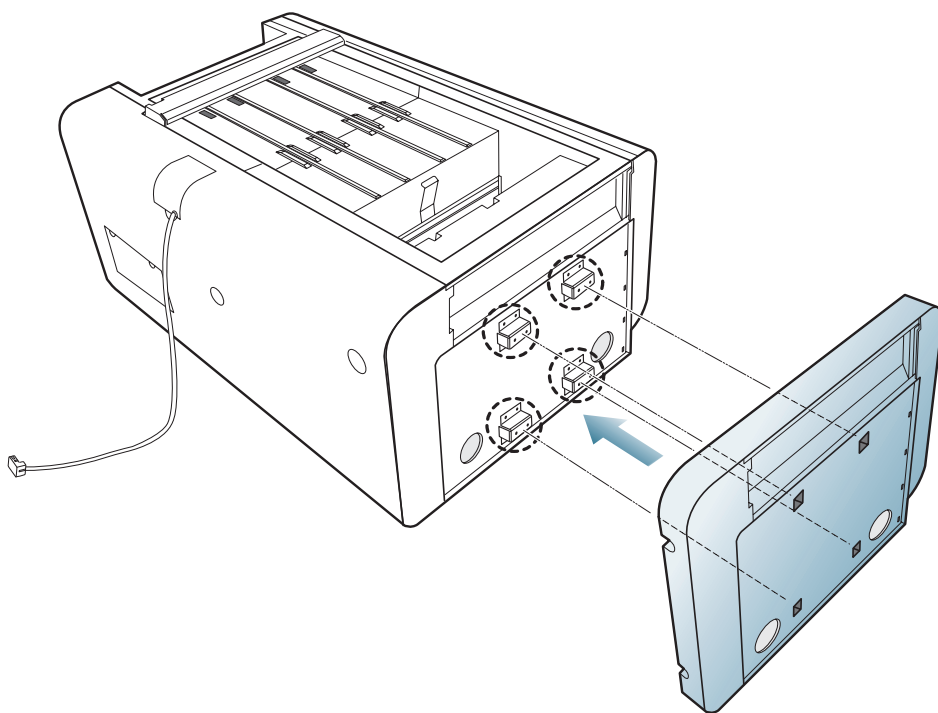
3. Loosen the knobs counterclockwise to remove them.



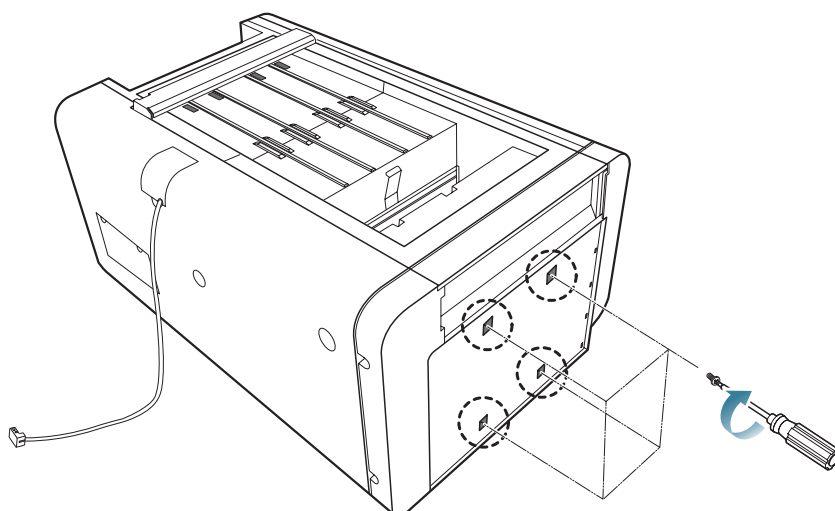
4. Remove the wheels.



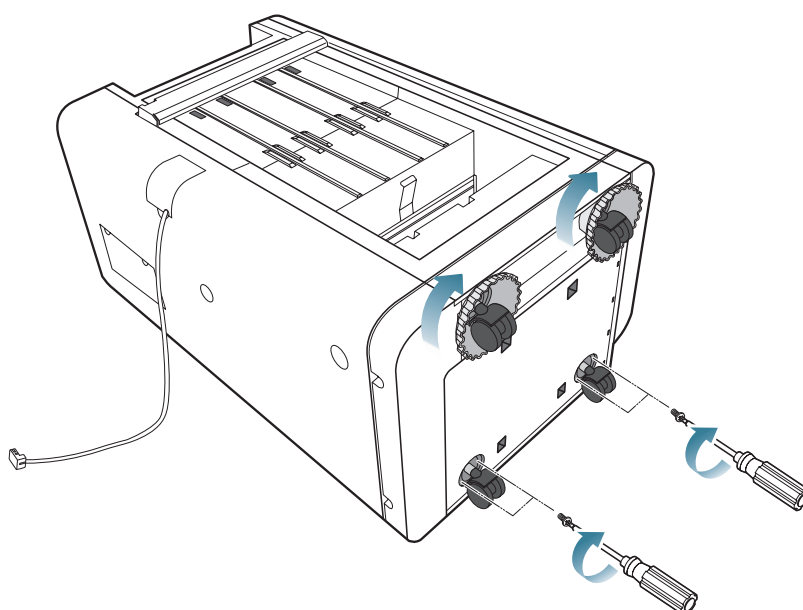
5. Assemble the spacer to the booklet finisher as shown below.



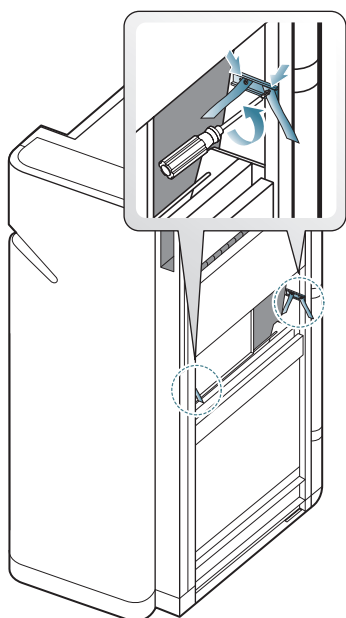
6. Tighten the four screws (Screw-Machine [M4x12]).



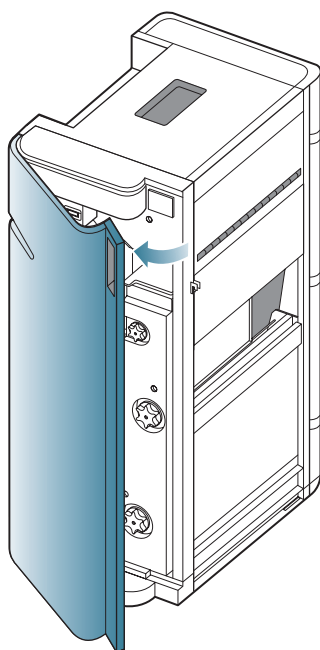
7. Replace the wheels and knobs.



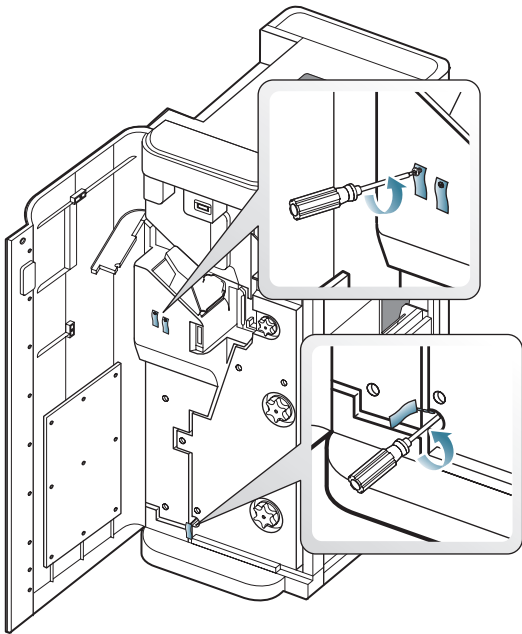
8. Stand the booklet finisher up, and remove the two steel brackets with ribbons.



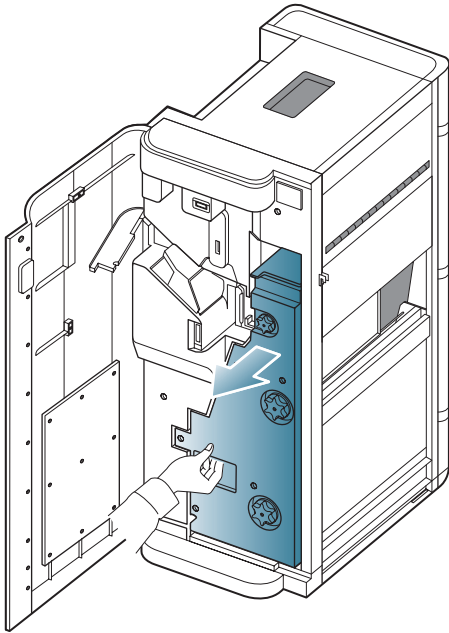
9. Open the front door.



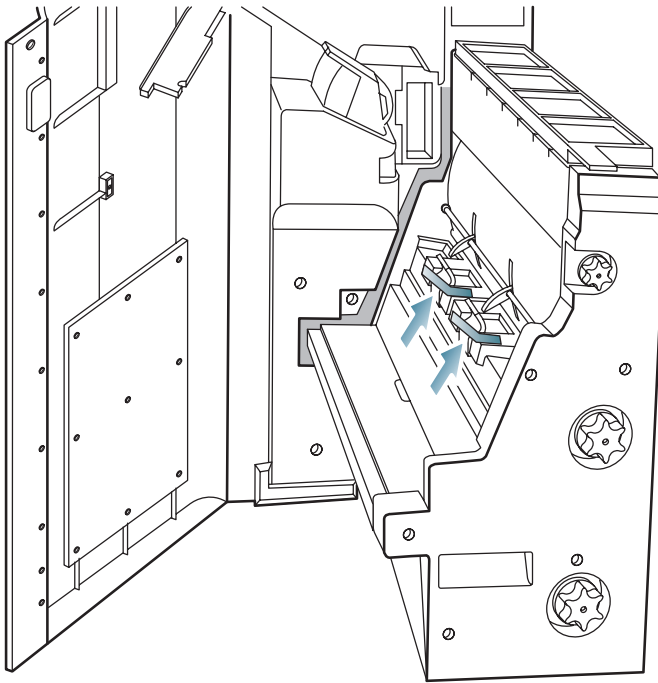
10. Remove the three screws with ribbons.



11. Then pull out the booklet maker.



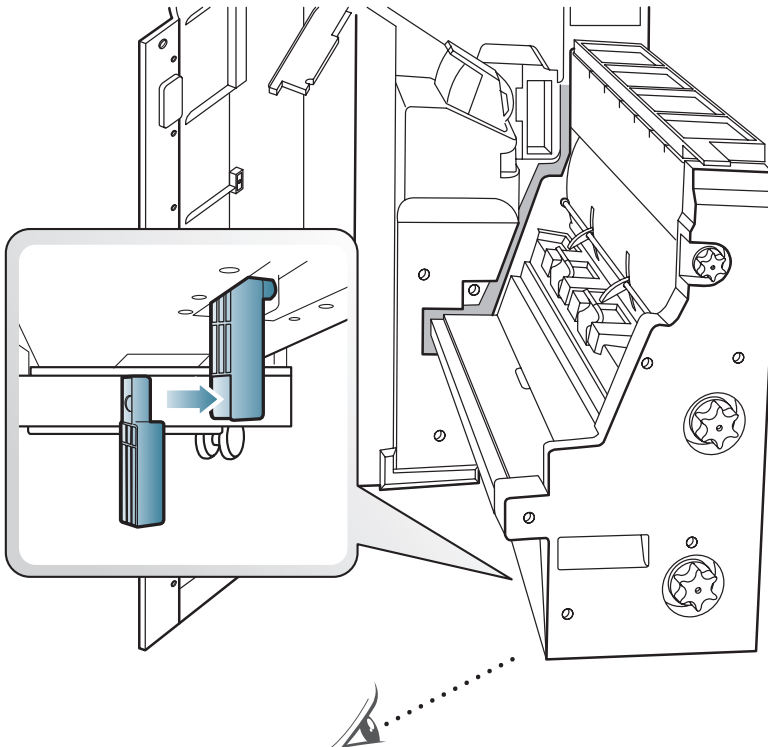
12. Remove the tapes on the booklet stapler.



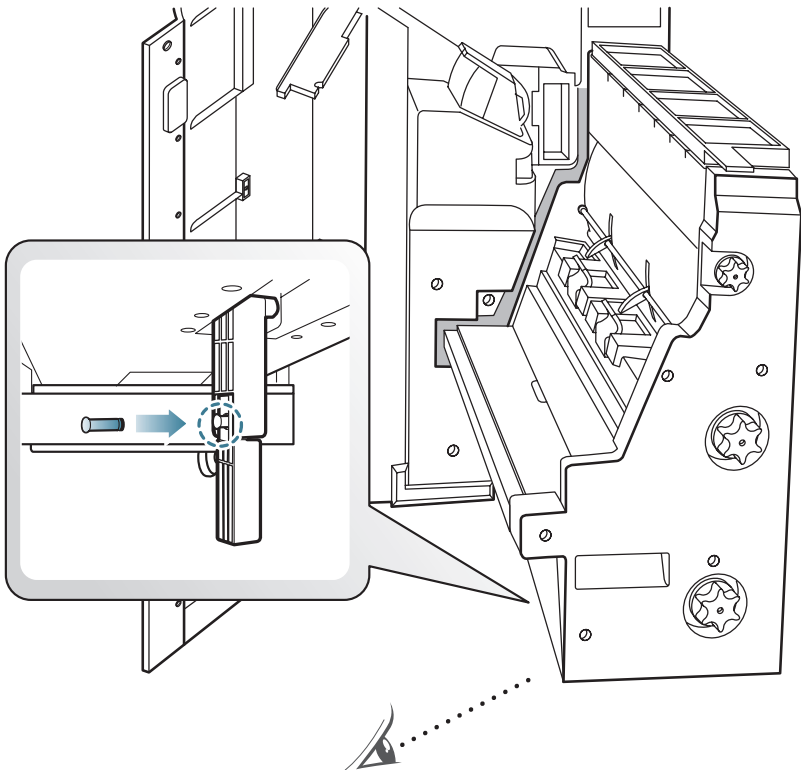
13. See the bottom of the booklet maker. Then put in the finisher leg as shown below.



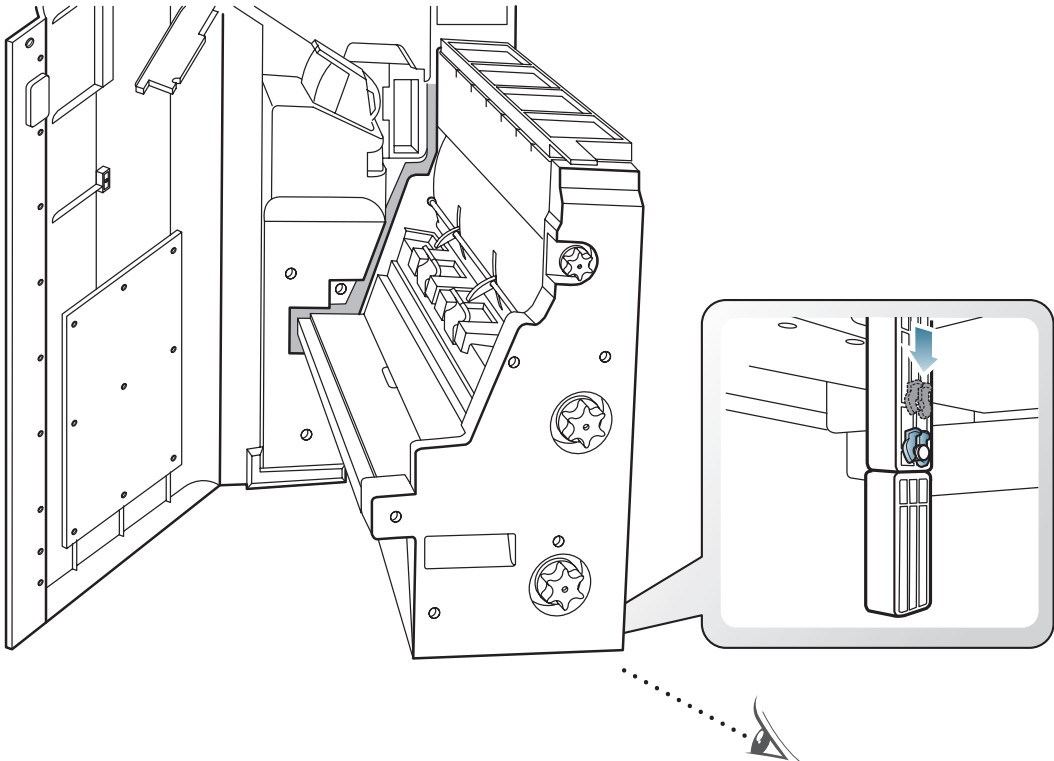
For SCX-8040_8030 Series, skip this step and go to step 16.



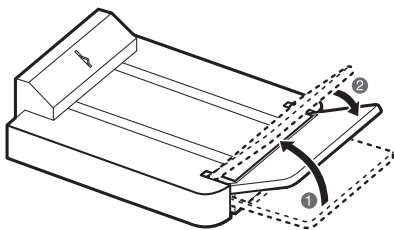
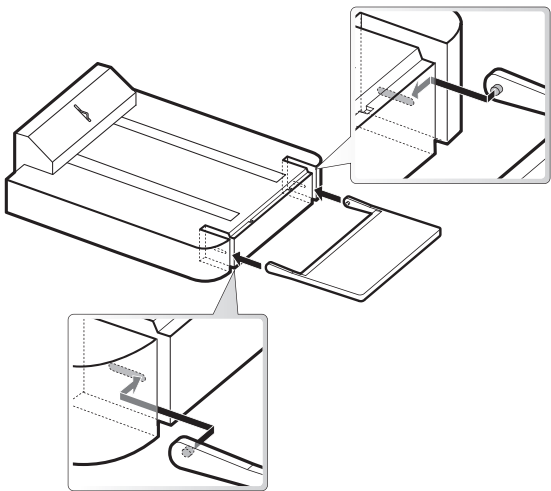
14. Insert the pin into the hole of the guide as shown below.



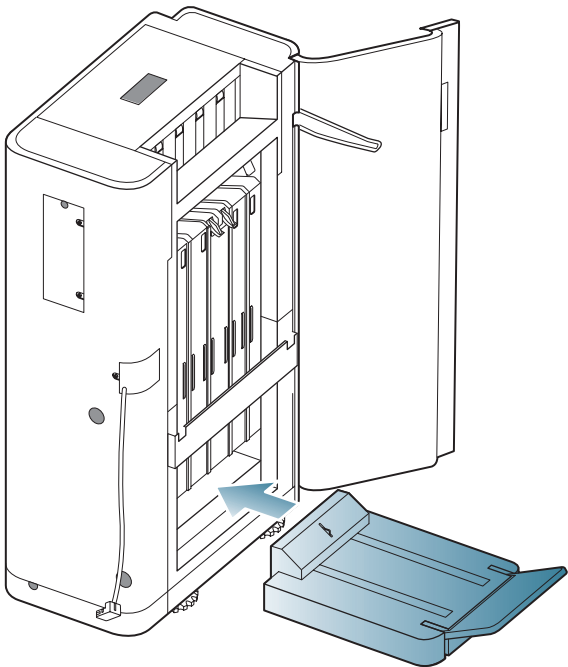
15. Put the ring into the pin as shown below.



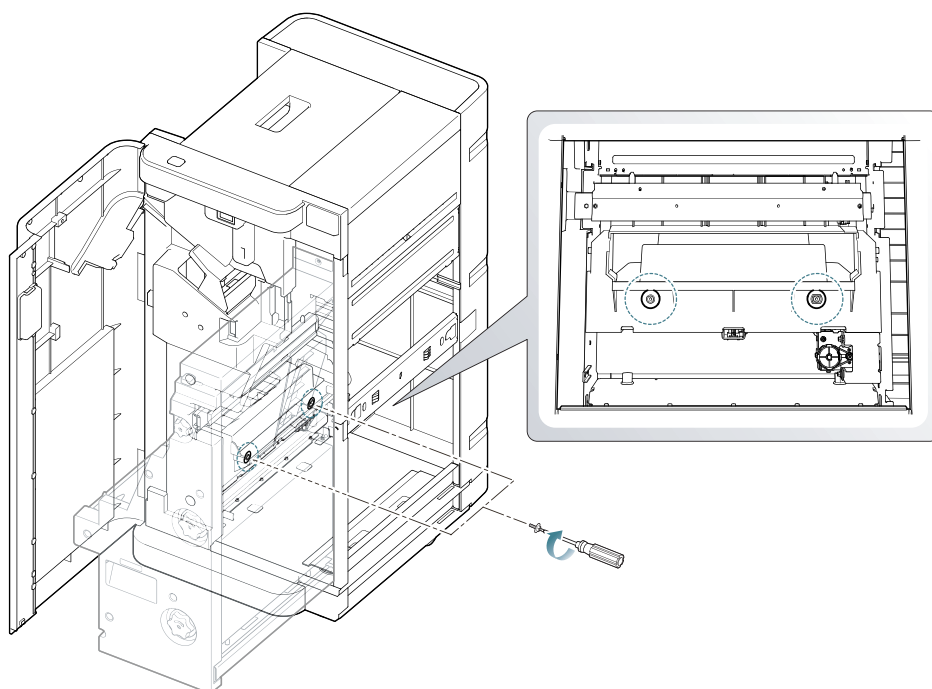
16. Insert the two tabs on the booklet tray's output support into the slots on both sides of the booklet tray as shown below.



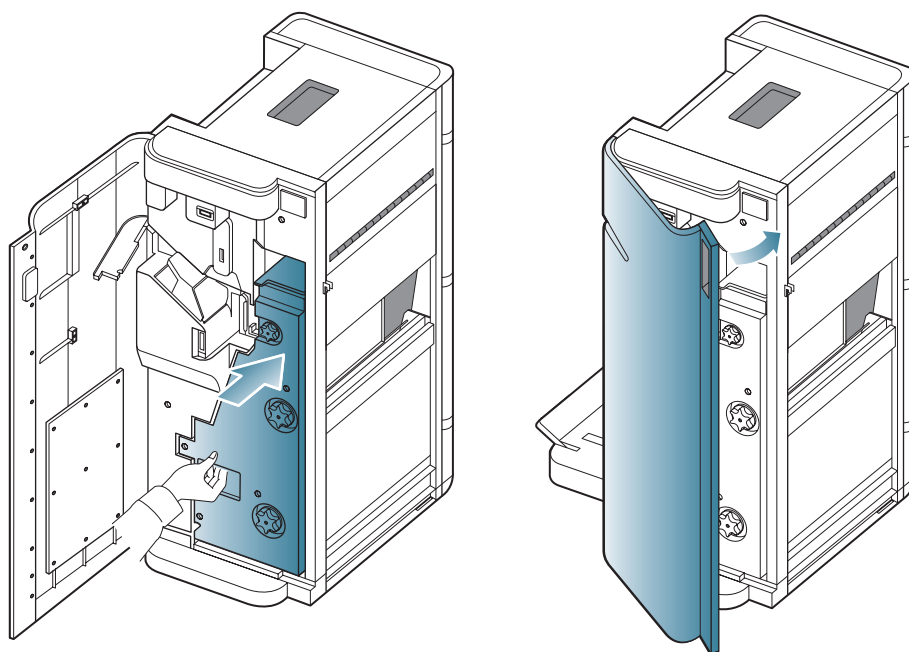
17. Insert the booklet tray, making sure the locating pins are correctly inserted in the locating holes.




18. To securely fasten the booklet tray to the finisher, use the two screws (Screw-Tapping [M4x10]) to fix the booklet tray securely to the finisher.

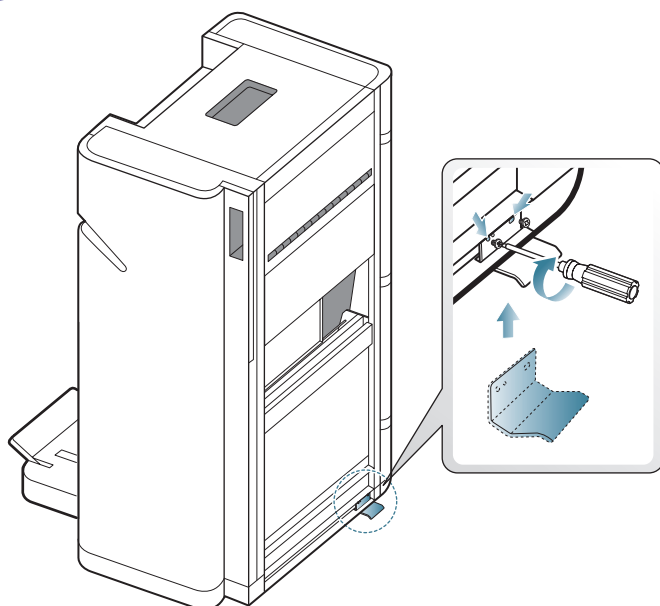


19. Insert the booklet maker and then close the front door.



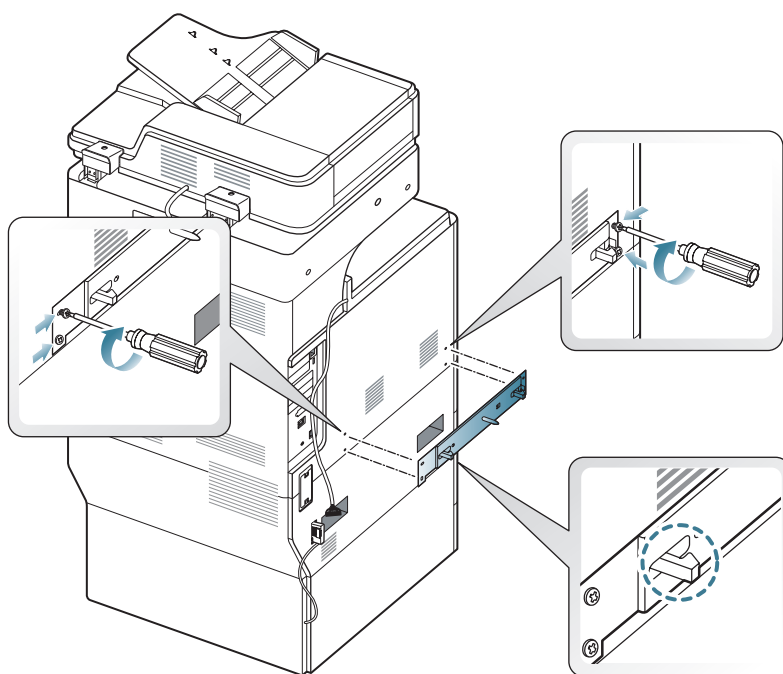
20. Insert the steel guide and tighten the two screws (Screw-Machine [M4x12]).

 For SCX-8040_8030 Series, skip this step.

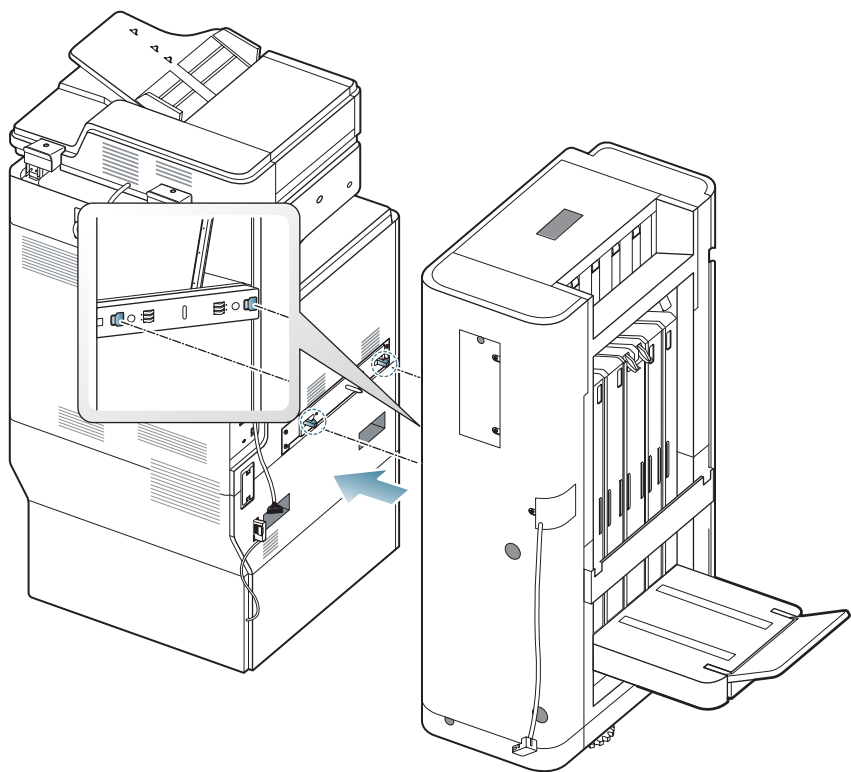


Installing the finisher

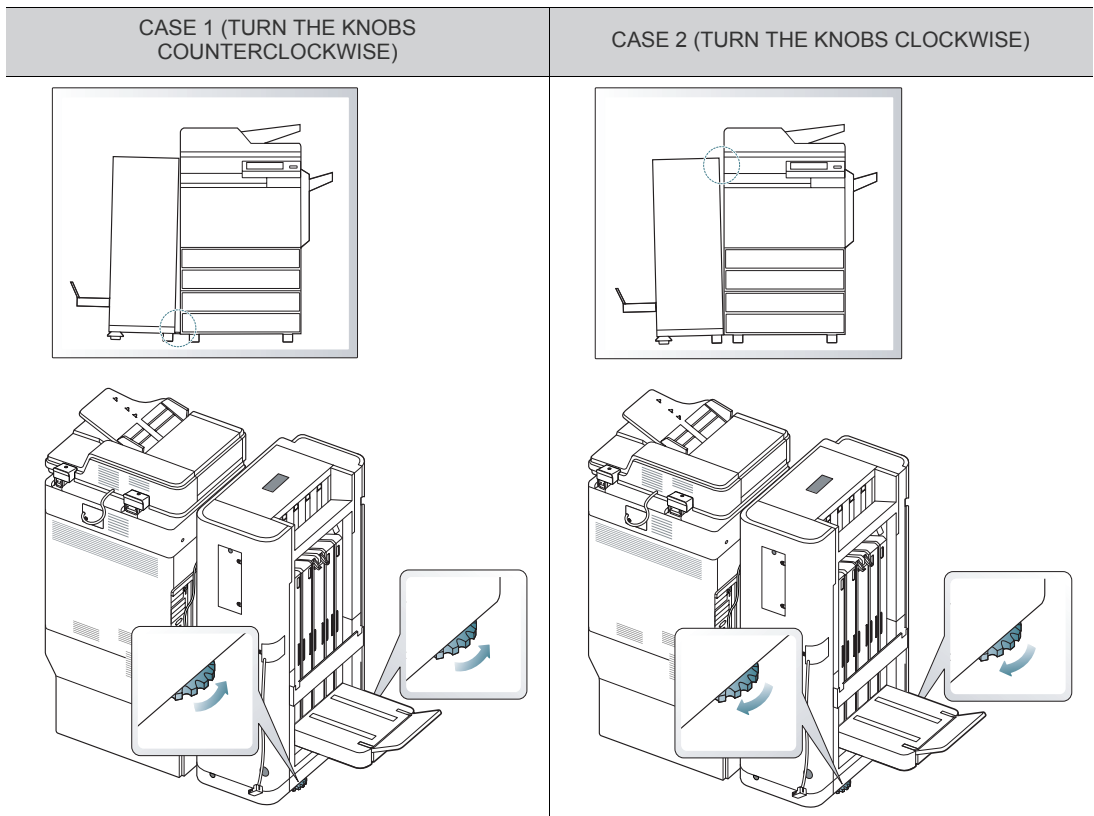
1. Attach the mounting bracket using the four screws (Screw-Machine [M4x12]).



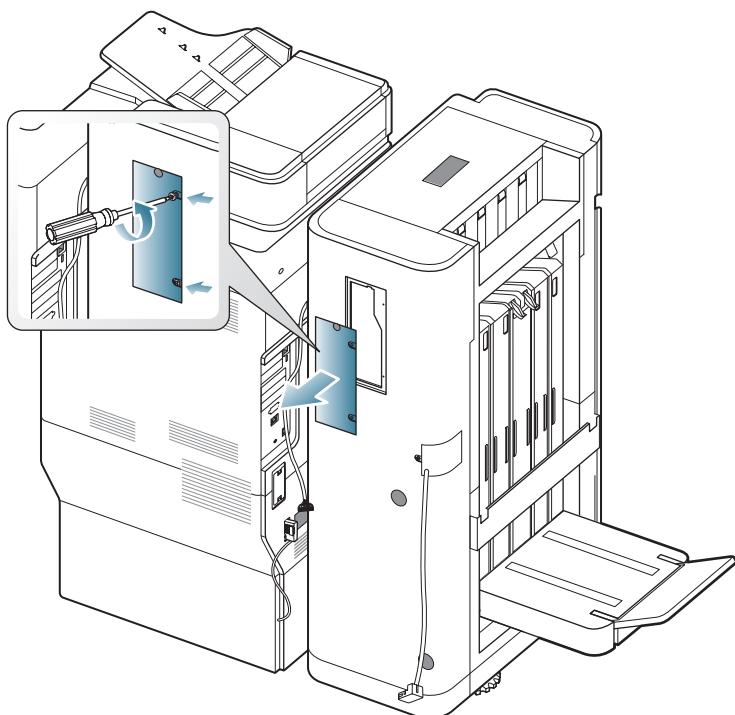
2. Adjust the location of mounting bracket's docking pin and the finisher hole, and push the finisher to the machine.



If the machine and the finisher do not lineup correctly, adjust the height of the finisher by turning the knobs underneath the finisher.



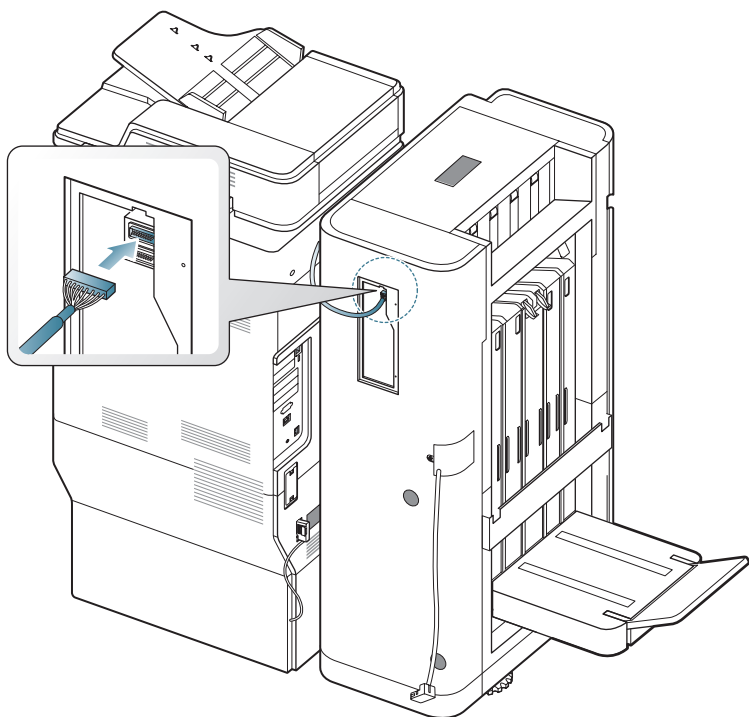
3. Loosen the two screws from the finisher cover, and open the finisher cover.



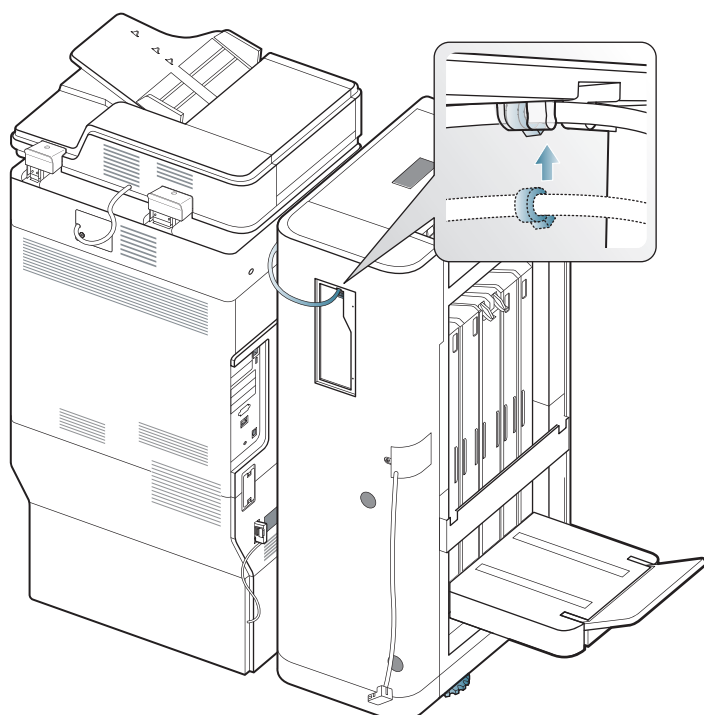
4. Connect the bridge cable to the upper connector.



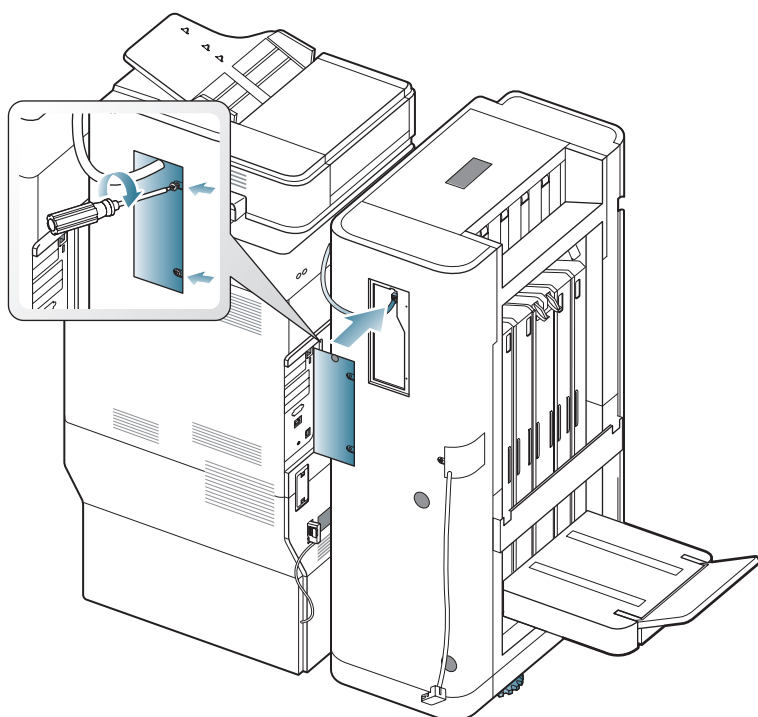
Do not force the bridge cable to the lower connector. It can cause damage to the machine. The lower connector is used for connecting the punch kit and the finisher.



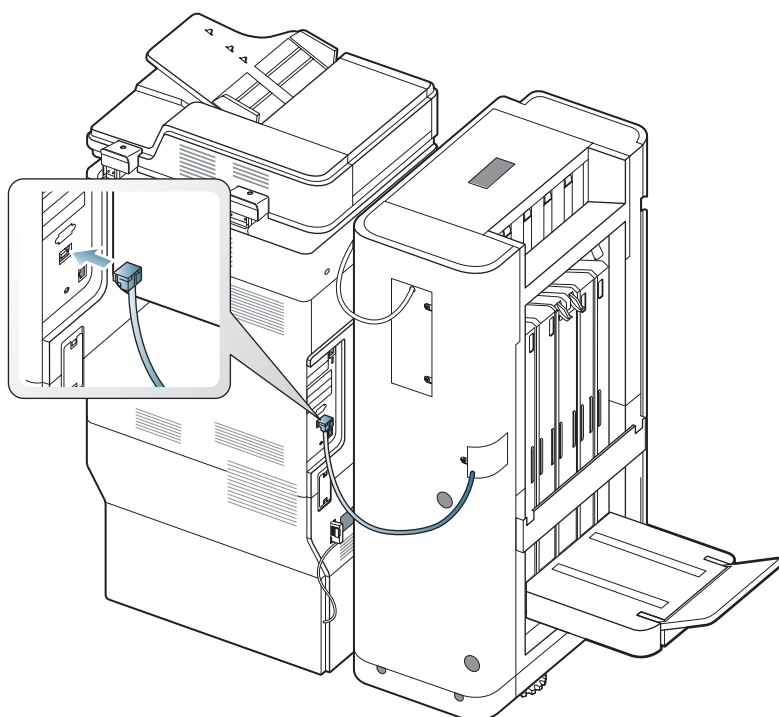
5. Check the cable tie on the bridge cable, and put in the bridge cable to the hook as shown below.



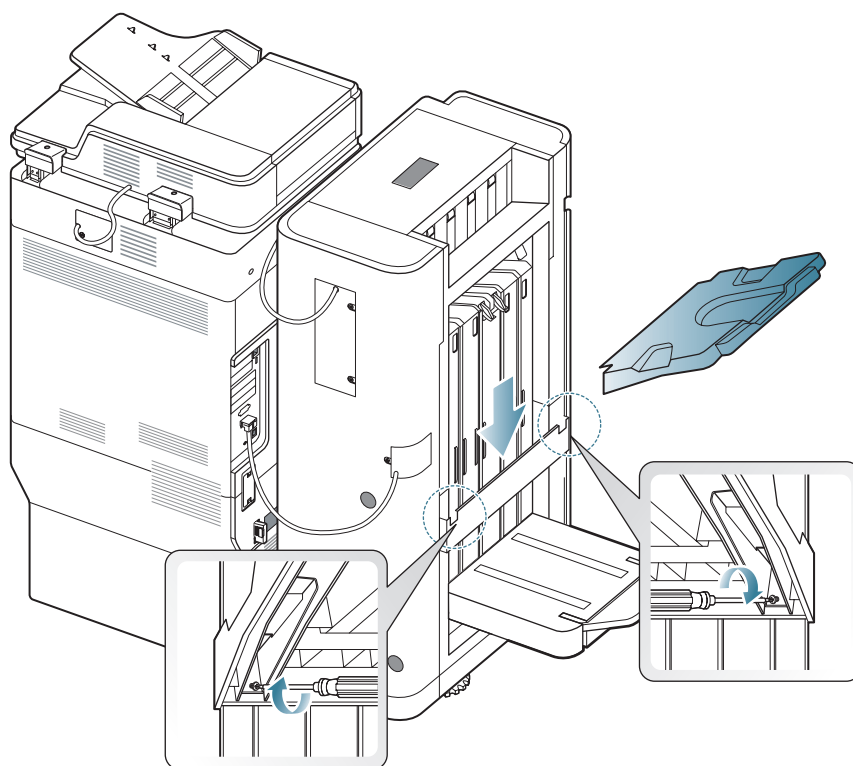
6. Then close the finisher cover and tighten the two screws.



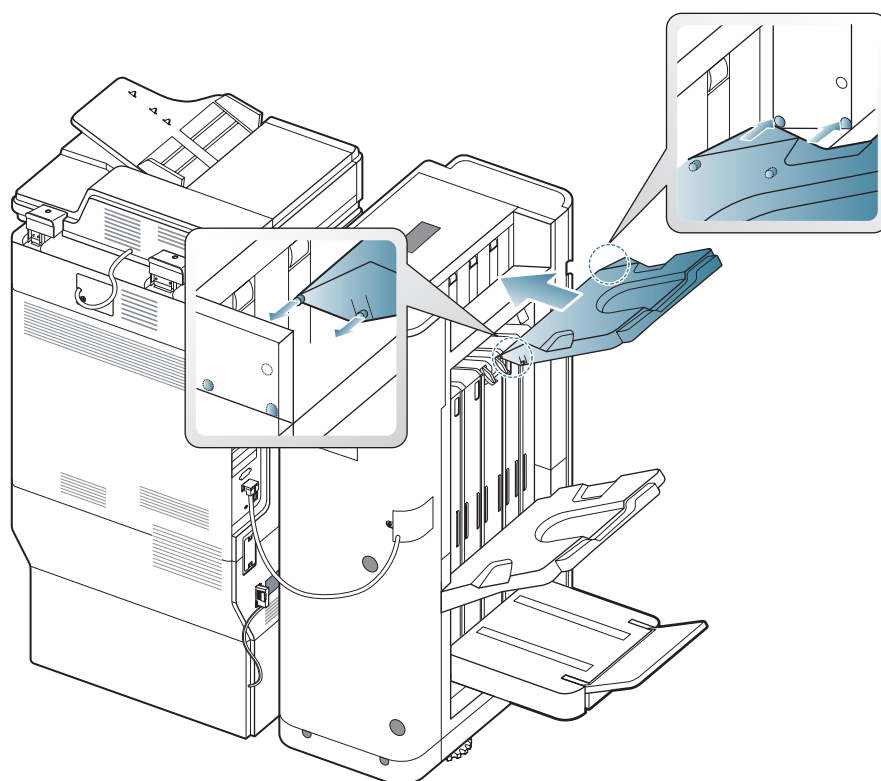
7. Connect the finisher cable to the connector on the machine.



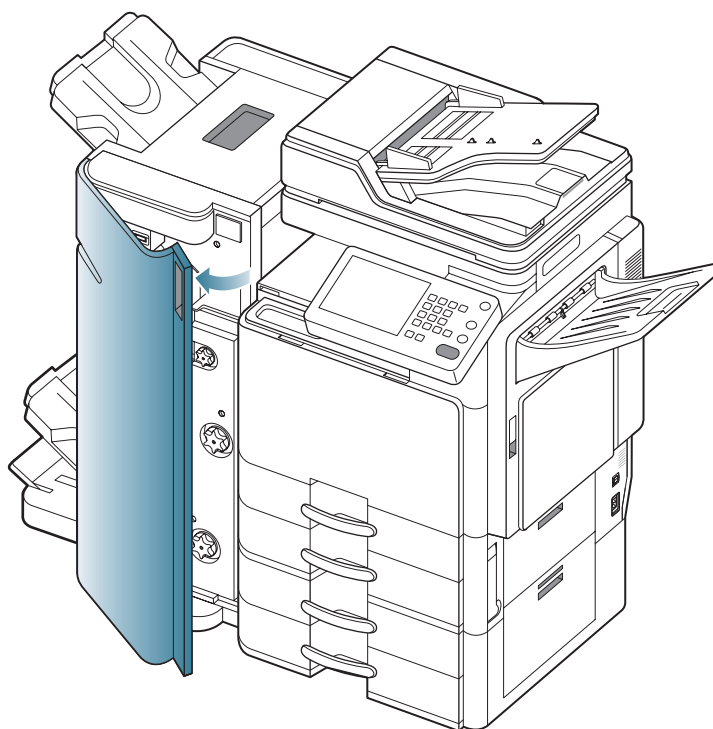
8. Insert the finisher tray and the tighten two screws (Screw-Machine [M4x12]) under the finisher tray.



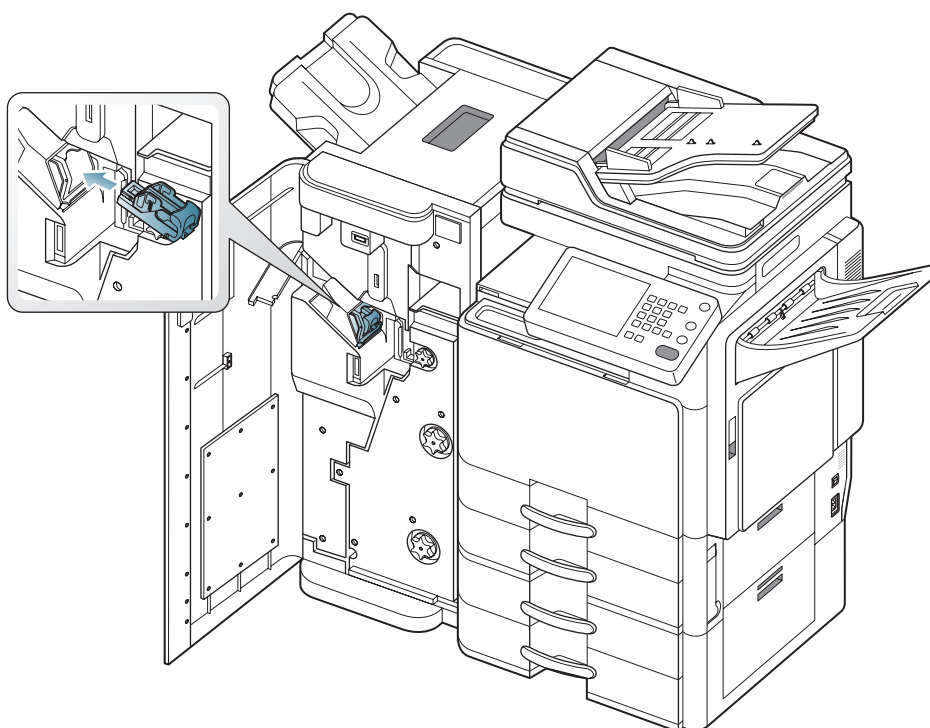
9. Insert the two tabs on the top tray into the slots on both sides of the finisher.



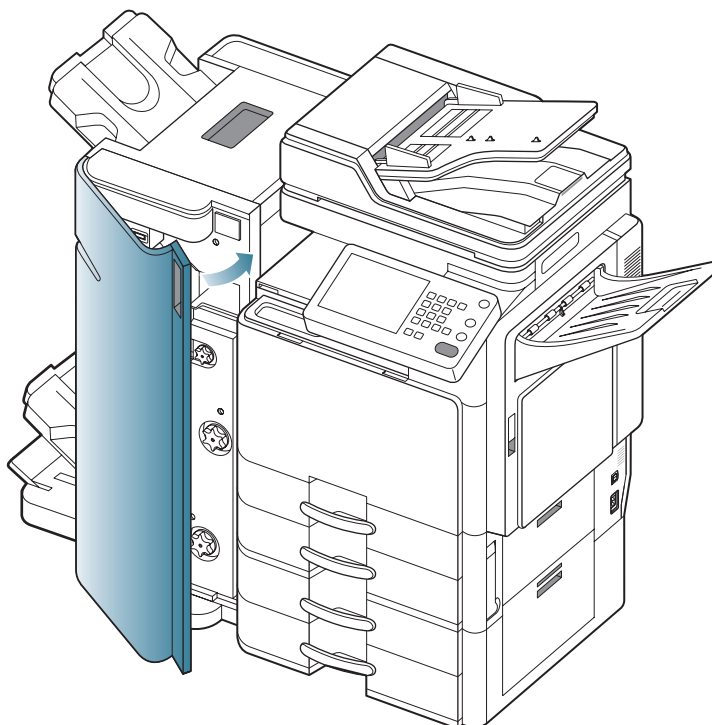
10. Open the front door of the booklet finisher.



11. Insert the staple cartridge.



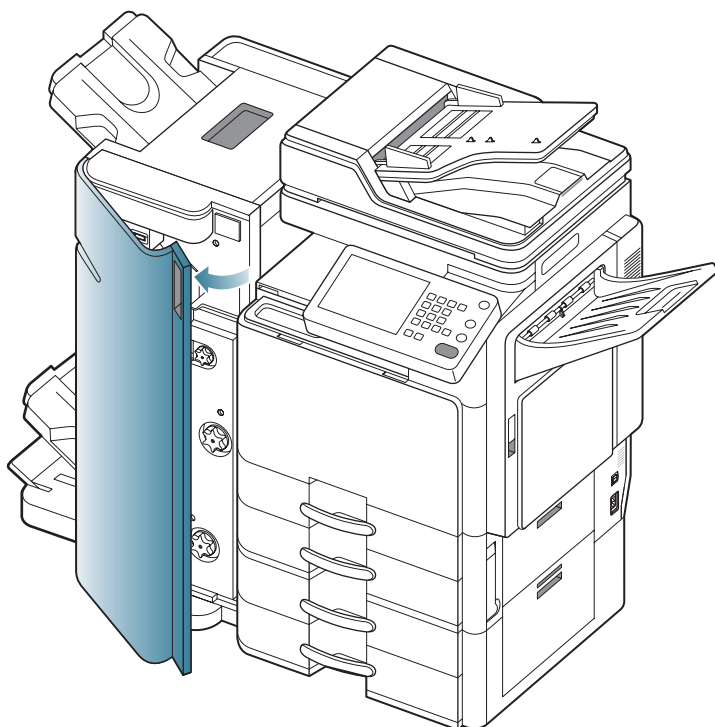
12. Close the front door.



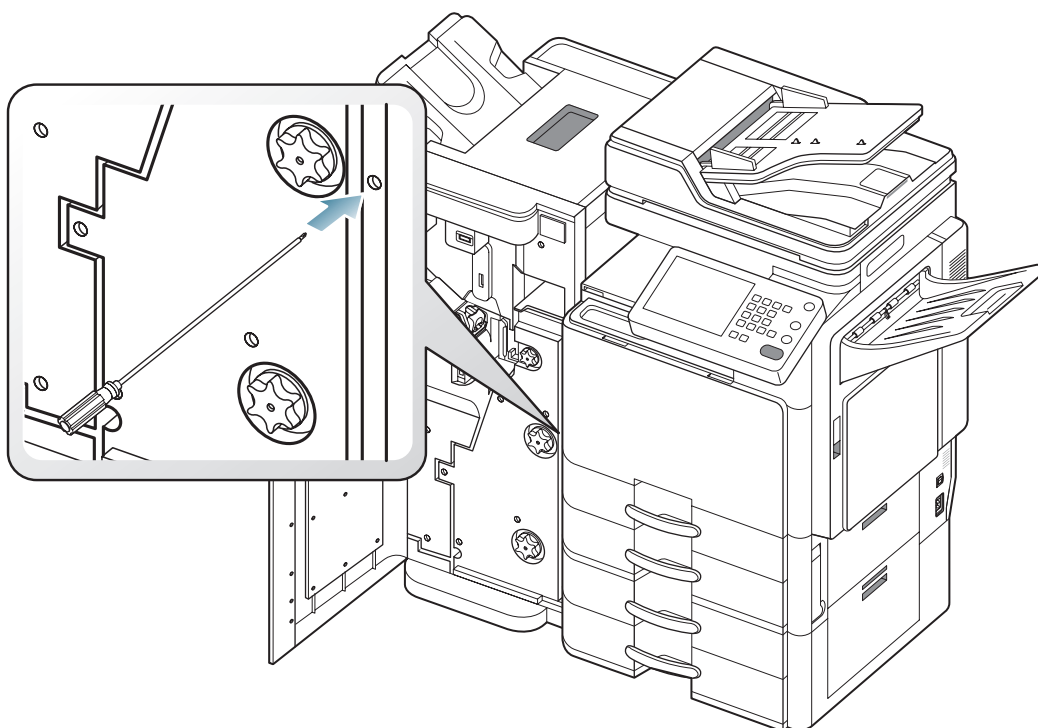
- For details on how to use the finisher, refer to the printing or copying chapter in the User's Guide included on the user's guide CD.
- If you have problems using the finisher, refer to the troubleshooting chapter in the User's Guide.

Separating the finisher

1. Open the front door of the booklet finisher.



2. Insert a screw driver in the hole and push it.
The finisher is separated from the machine.



The Samsung logo, consisting of the word "SAMSUNG" in a bold, blue, sans-serif font, is centered within a white, horizontally-oriented oval. This oval is positioned in the upper-left corner of a larger blue rectangular field.

SAMSUNG