

SAMSUNG

Thank you for purchasing a Samsung product.

Quick Installation Guide

Samsung Multifunction **ProXpress**
C268xFX series

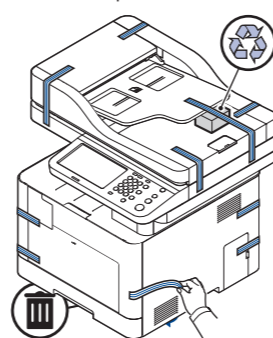
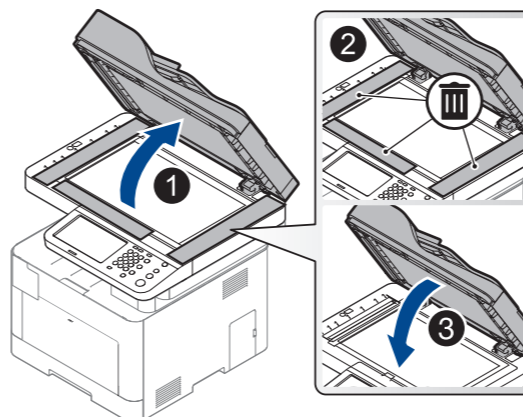
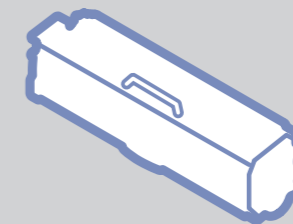
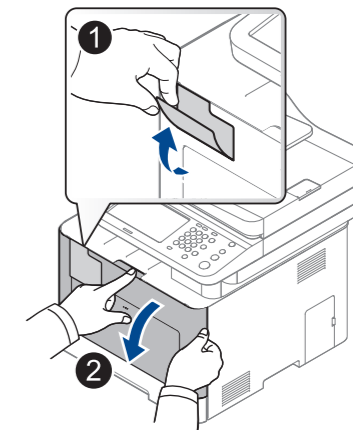
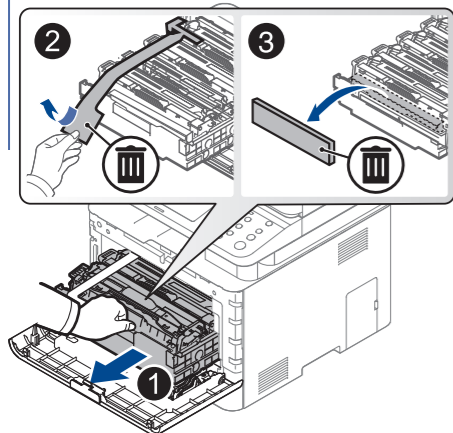
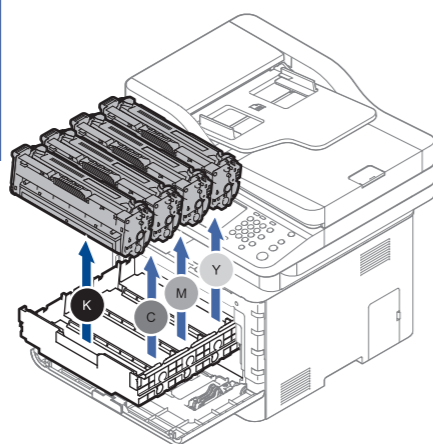
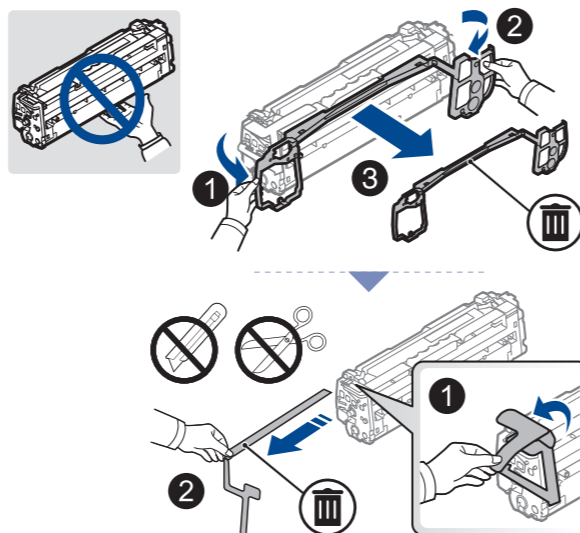
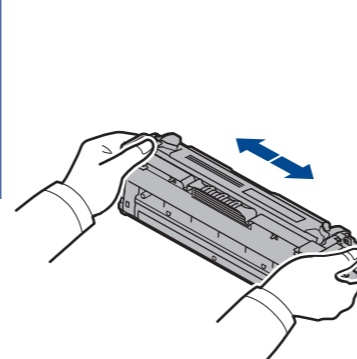
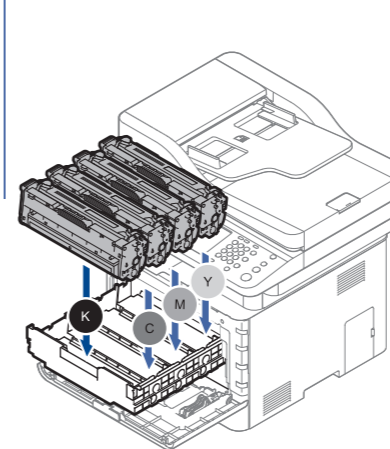
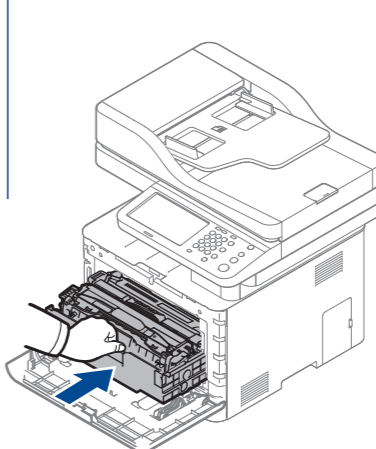
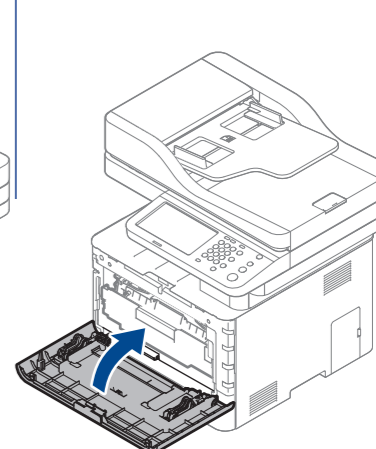
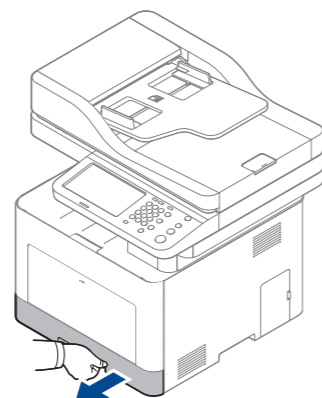
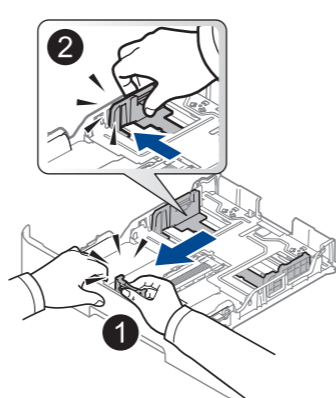
JC68-03422A01

FR Guide d'installation rapide**ES** Guía rápida de instalación

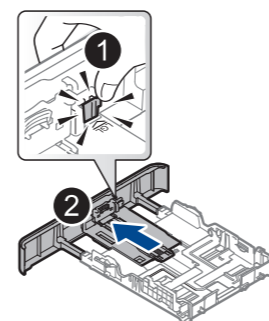
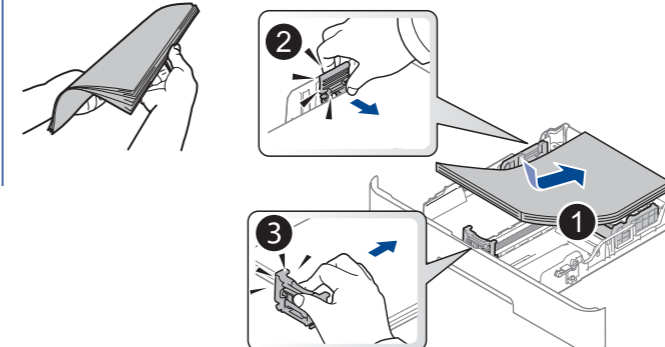
* The illustration may differ from your machine depending on your model.

FR Selon le modèle, cette illustration peut différer de votre appareil.**ES** Esta ilustración puede ser diferente a su dispositivo en función del modelo.**1** Detach / Détachez / Retirar

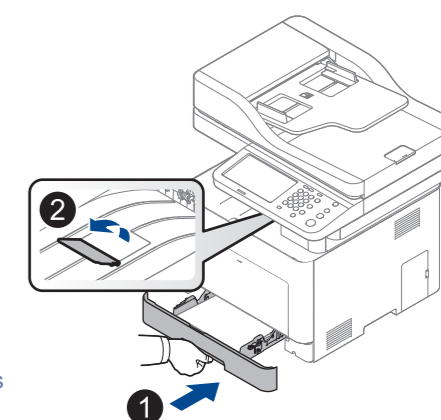
* Remove all blue tapes attached to the machine.
FR Retirer tout le ruban adhésif bleu fixé à la machine.
ES Retire toda la cinta adhesiva de color azul que presente la máquina.

**2** Remove / Retirez / Quitar**1** Installing the Toner Cartridges**1** Open / Ouvrez / Abrir**2** Pull / Tirez / Tirar**3** Take out / Sortez / Extraer**4** Remove / Retirez / Quitar**5** Shake / Secouez / Agitar**6** Insert / Insérez / Insertar**7** Push / Poussez / Empujar**8** Close / Fermez / Cerrar**2** Loading Paper**1** Open / Ouvrez / Abrir**2** Extend / Agrandir / Desplegar

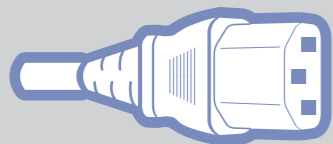
Legal (LGL)

**3** Insert / Insérez / Insertar

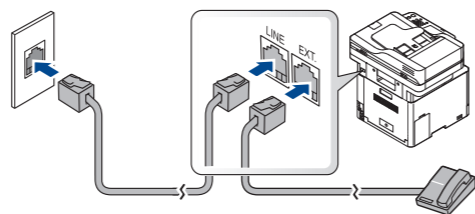
Letter: Xerox Business MultiPurpose 4200 or 20lb, 92 brightness
 A4: Xerox Premier or 80g/m², 92 brightness
 Photo: Glossy Laser Paper 150g

4 Close / Fermez / Cerrar

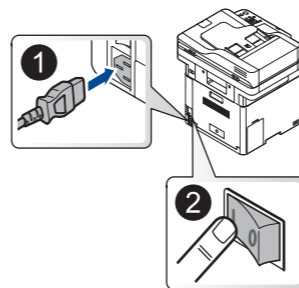
3 Connecting Cable



Connecting Fax Line



Power On / Marche / Encendido



Wait a few seconds for the machine to warm up.

FR Attendre quelques secondes que la machine se réchauffe.

ES Espere hasta que la impresora se caliente.

4 Initial Settings



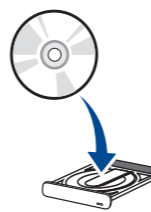
5 Installing Software



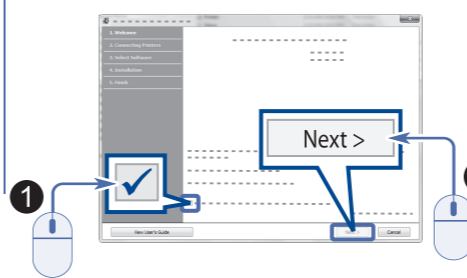
Windows



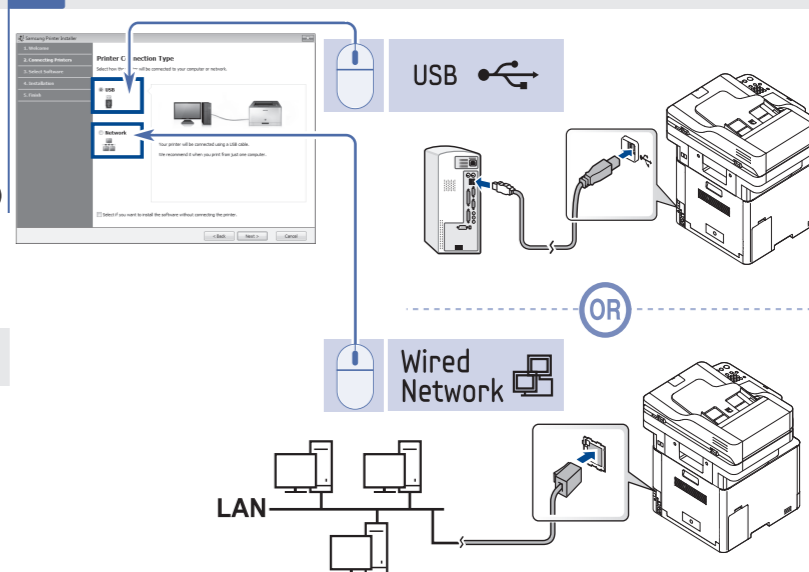
1 Insert / Insérez / Insertar



2 Click/Cliquez/Clic



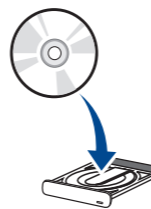
3 Connect / Branchez / Conectar



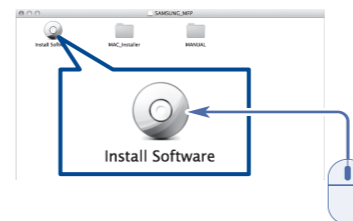
Mac



1 Insert / Insérez / Insertar



2 Click/Cliquez/Clic

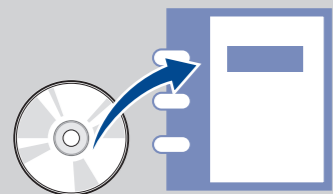


UNIX®
/ Linux
/ No CD-ROM
Drive

Download / Télécharger / Descargar

<http://www.samsung.com/printersetup>

6 Viewing the User's Guide in the CD-ROM



Be sure to read the safety guidelines in the User's Guide.

FR Veillez à bien lire les directives de sécurité du guide de l'utilisateur

ES Asegúrese de leer las instrucciones de seguridad del manual de usuario.