

How can I dispense detergent automatically?

No.	Step	Image	Etc.
1	Error message		The following messages appear if the Auto Dispense unit runs out of detergent.
2	Remove the Auto Dispense unit		Open the door and remove the Auto Dispense unit as shown, and place it on a flat floor with the knob upwards .
3	Open the Auto Dispense unit		Turn the knob counter clockwise to open.
4	Apply detergent/fabric softener to the unit		With the unit placed on a flat floor and the knob upwards, Gently input the liquid detergent to the left compartment, and fabric softener to the right compartment. Do not exceed the max line that is marked inside the unit.
5	Close the Auto Dispense unit		Fully turn the knob clockwise and reinsert the unit in the original position.



※ When moving the Auto Dispense unit with the content remaining, make sure the handle and knob side are upward(①) Other positions may cause the content to leak.

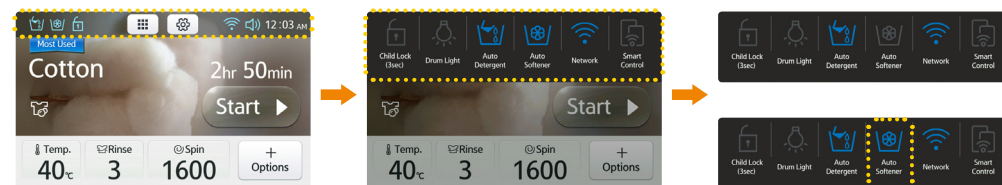
- ②, ③ : the handle and knob side are downward
- ④ : taking the outlet by hand

How can I dispense detergent automatically?

How can I set the detergent load?

No.	Step	Image	Etc.
1	Entering Setting Menu		<ol style="list-style-type: none"> 1 Tap the gear-shaped Settings icon at the top bar. 2 Tap [Auto Dispense] in the list.
2	Setting	<p>※ For setting on Amount/Concentration and Hardness, refer to the recommendations by the manufacture of detergent and softener.</p>	<ol style="list-style-type: none"> 3 Slide the [Auto detergent] or [Auto softener] bar to On as shown. 4 Set the amount and water hardness for liquid detergent. Set the amount and concentration for fabric softener. 5 When done, tap [Save] in the bottom area. 6 Tap to return to the previous menu

Isn't there a quick way to access Auto Dispense?



Once you set the input amount, you can quickly activate or deactivate Auto Dispense.

- 1 Swipe down the top bar to display the Quick Settings panel.
- 2 Tap to turn on or off [Auto detergent] and [Auto softener]

※ If you prefer to apply detergent manually, turn off [Auto Detergent] and apply detergent to the Aqua Pebble.

Refer to the gradations on the Aqua Pebble to apply detergent as appropriate(refer to the amount recommendation of detergent manufacture), and put the Aqua Pebble in the drum on top of laundry.

