

# Quick Installation Guide



JC68-02960A04

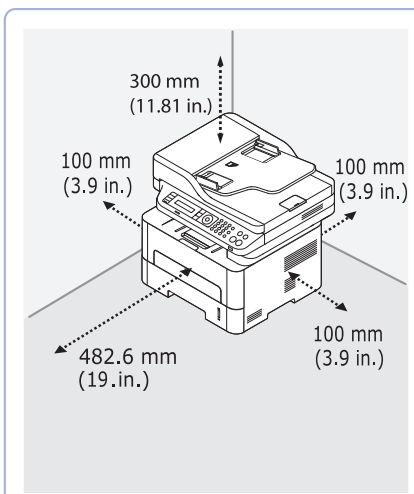
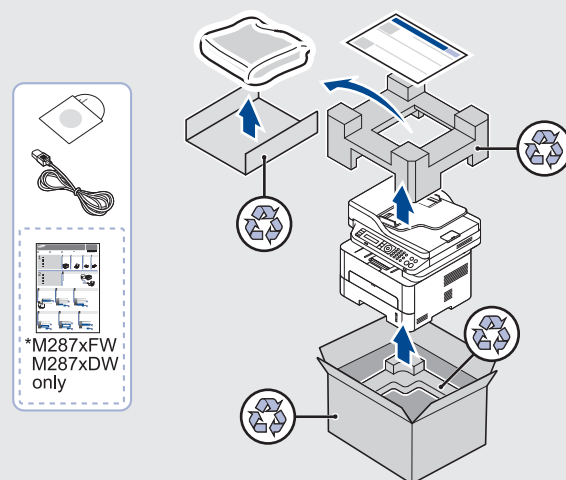
**FR** Guide d'installation rapide

**ES** Guía rápida de instalación

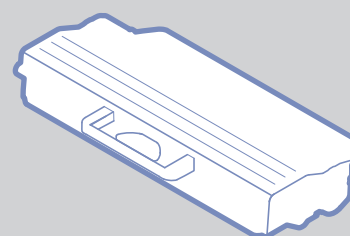
\* The illustration may differ from your machine depending on your model.

**FR** Selon le modèle, cette illustration peut différer de votre appareil.

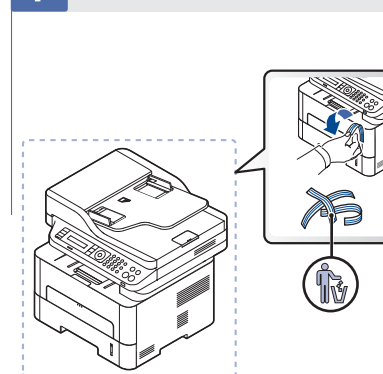
**ES** Esta ilustración puede ser diferente a su dispositivo en función del modelo.



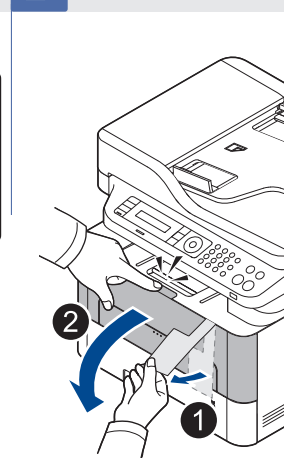
## 1 Installing the Toner Cartridge



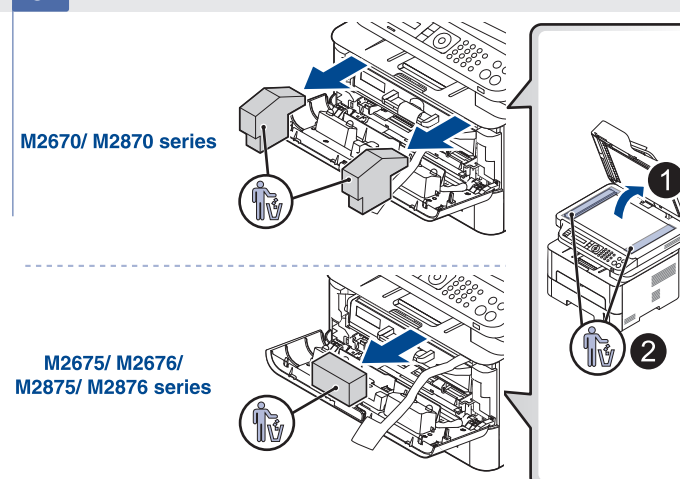
**1** Detach / Détachez / Retirar



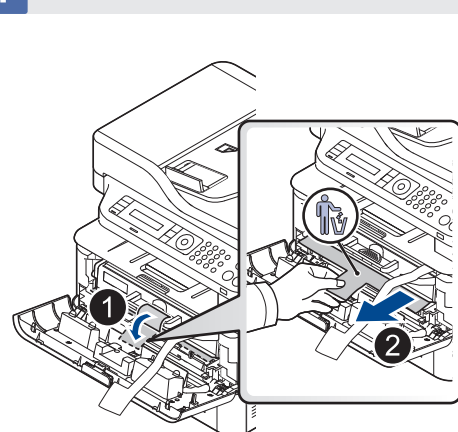
**2** Open / Ouvrez / Abrir



**3** Remove / Retirez / Quitar



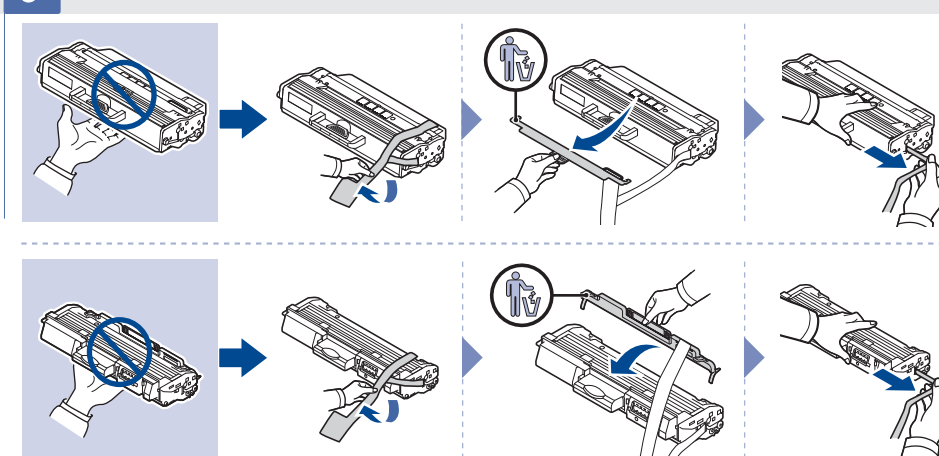
**4** Take out / Sortez / Extraer



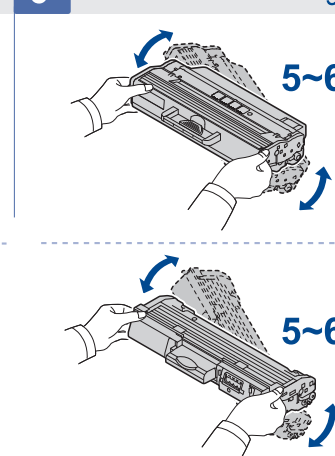
M2670/M2870 series

M2675/ M2676/  
M2875/ M2876 series

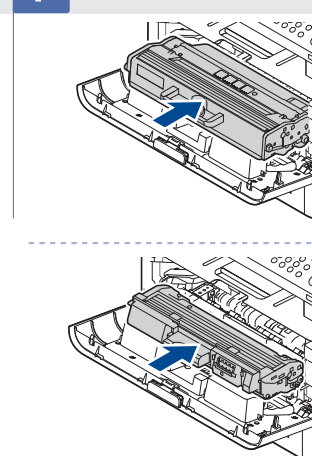
**5** Remove / Retirez / Quitar



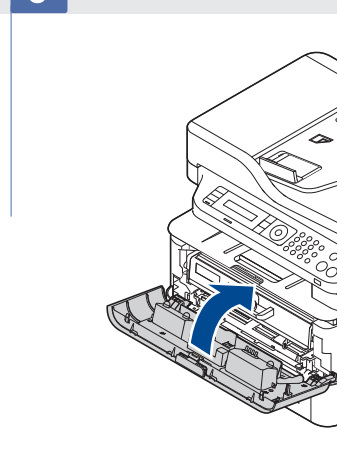
**6** Shake / Secouez / Agitar



**7** Insert / Insérez / Insertar



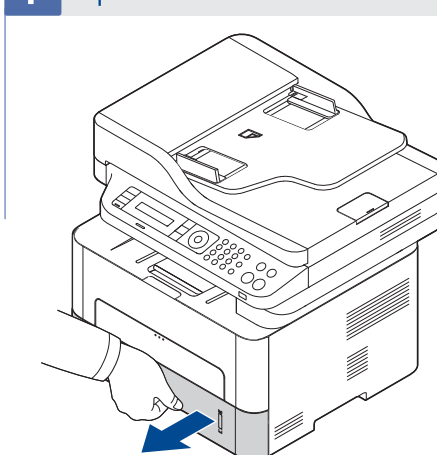
**8** Close / Fermez / Cerrar



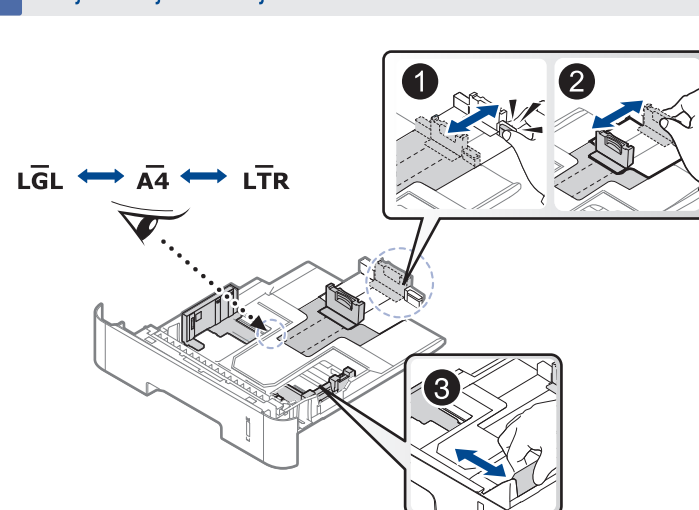
## 2 Loading Paper



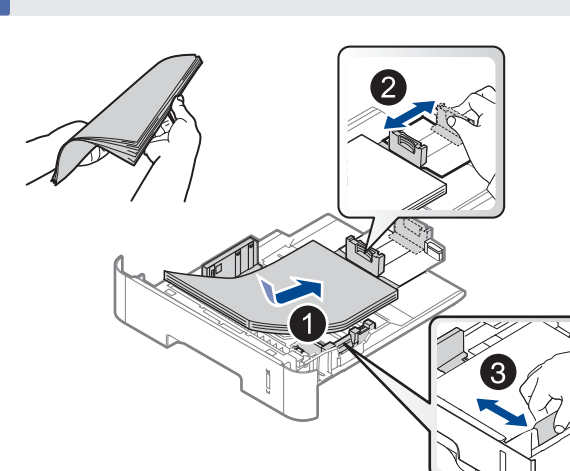
**1** Open / Ouvrez / Abrir



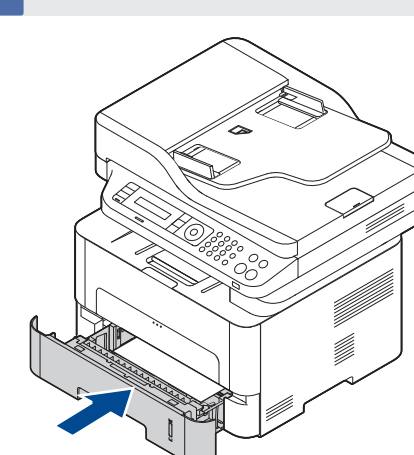
**2** Adjust / Ajuster / Ajustar



**3** Insert / Insérez / Insertar



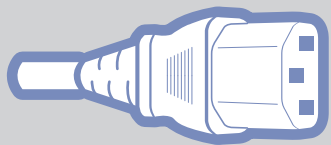
**4** Close / Fermez / Cerrar



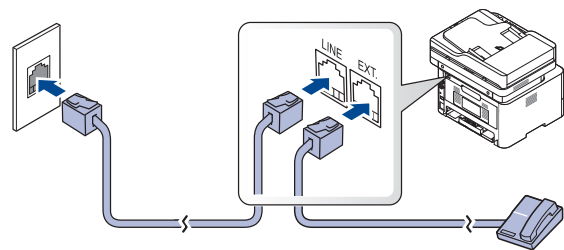
Letter Xerox Business Multipurpose 4200 or 20lb, 92 brightness

A4 Xerox Premier or 80g/m<sup>2</sup>, 92 brightness

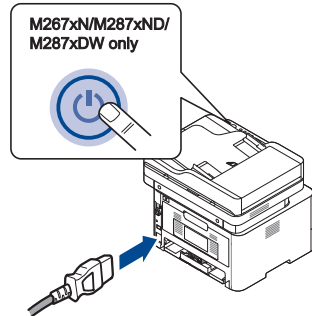
### 3 Connecting Cable



#### Connecting Fax Line (fax user only) M267xF/ M267xFH/ M267xFN/ M267xHN/ M287xFD/ M287xHN/ M287xFW only



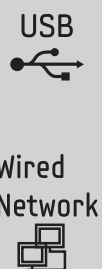
### 1 Power On / Marche / Encendido



Wait few seconds for the machine to warm up.

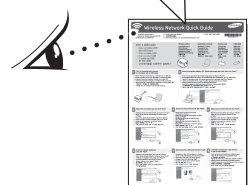
**FR** Attendre quelques secondes que la machine se réchauffe.  
**ES** Espere hasta que la impresora se caliente.

### 4 Installing Software



M287xFW/M287xDW only

Wireless Network Quick Guide



For details about how to install software, refer to the User's Guide.

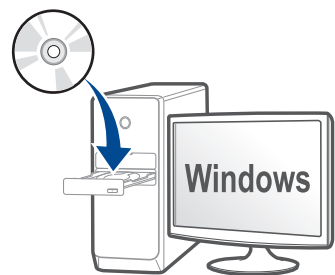
**FR** Pour savoir comment installer le logiciel, consultez le mode d'emploi.

**ES** Si desea obtener más información sobre cómo instalar el software, consulte la Guía del usuario.

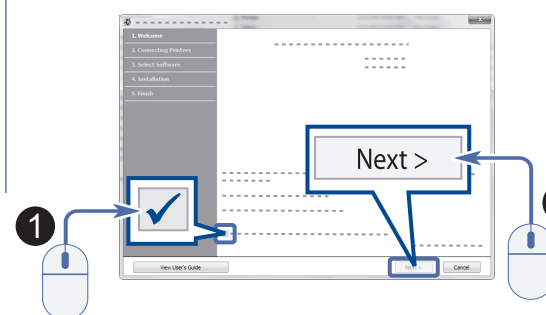
Windows



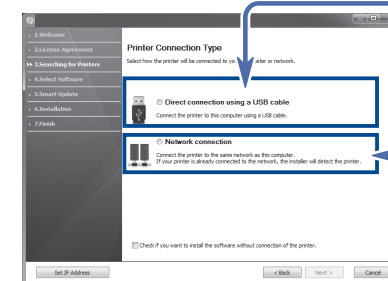
#### 1 Insert / Insérez / Insertar



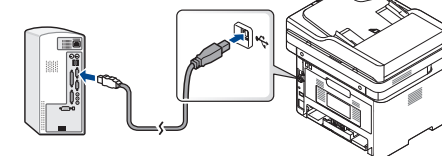
#### 2 Click/Cliquez/Clic



#### 3 Connect / Branchez / Conectar

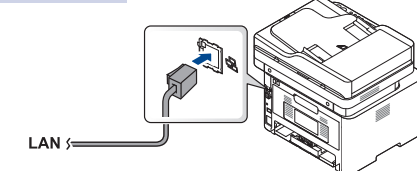


USB

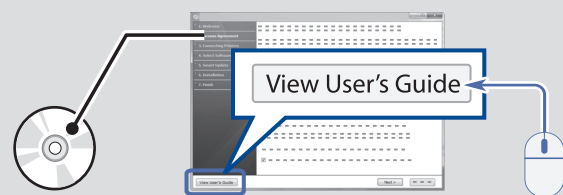


OR

Wired Network



Windows 8



Mac



UNIX®



Linux

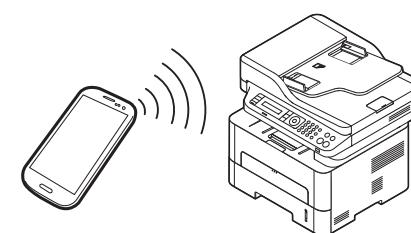
Download



<http://www.samsung.com>

M287xFW/M287xDW only

Samsung Mobile Print



### 5 Viewing the User's Guide



Be sure to read the safety guidelines in the User's Guide on the supplied CD-ROM before using this product.

**FR** Avant d'utiliser ce produit, lisez attentivement les normes de sécurité indiquées dans le Guide de l'utilisateur disponible sur le CD-ROM inclus.

**ES** Antes de utilizar este producto, asegúrese de que ha leído las directrices sobre seguridad de la Guía del usuario que se encuentra en el CD-ROM suministrado.