


The Samsung logo, consisting of the word "SAMSUNG" in white, bold, sans-serif capital letters, is centered within a white, horizontally-oriented oval. This oval is set against a solid blue background that fills the top-left portion of the page.

SAMSUNG

Installation Guide

A short, solid blue vertical line positioned to the left of the product series list.

SCX-8230 Series
SCX-8240 Series
CLX-9252 Series
CLX-9352 Series

Copyright

© 2012 Samsung Electronics Co., Ltd. All rights reserved.

This user's guide is provided for information purposes only. All information included herein is subject to change without notice.

Samsung Electronics is not responsible for any direct or indirect damages, arising from or related to use of this user's guide.

- Samsung and Samsung logo are trademarks of Samsung Electronics Co., Ltd.
- PCL and PCL 6 are trademarks of Hewlett-Packard Company.
- Microsoft, Internet Explore, Windows, Windows Vista, Windows 7 and Windows 2008 Server R2 either registered trademarks or trademarks of Microsoft Corporation.
- PostScript 3 is a trademark of Adobe System, Inc.
- UFST® and MicroType™ are registered trademarks of Monotype Imaging Inc.
- TrueType, Mac and Mac OS are trademarks of Apple Inc., registered in the U.S and other countries.
- LaserWriter is a trademark of Apple Inc.
- All other brand or product names are trademarks of their respective companies or organizations.

Contentds

ABOUT THIS INSTALLATION GUIDE

SETTING UP THE HARDWARE

Installation environment	7
Machine configuration	8
Optional goods by models	9
Installation flow of the hardware	10
Unpacking and placing the hardware	11
Installing the cabinet stand, optional dual cassette feeder or optional high capacity feeder	12
Removing the scanner locking screw	13
Putting the rubber packings	13
Installing the toner cartridges	14
Installing the imaging units	16
CLX-9252/9352 Series	16
SCX-8230/8240 Series	21
Installing other options	26
Loading paper	27
Standard tray	27
Connecting a printer cable	32
Using a network cable	32
Turning the machine on	33

INITIAL SETTINGS AND TESTING OF THE MACHINE

Initial setting	35
Print adjustment (Dual cassette feeder or High capacity feeder)	41
DADF skew test and adjustment	44
Skew test	44
DADF adjustment	47

INSTALLING THE SUPPLIED SOFTWARE

Supplied software	51
System requirements	52
Windows	52
Macintosh	52
Linux	52
UNIX	53
Installing a network connected machine's driver	53
Windows	53

About this installation guide

This installation guide provides information about the installation of the machine as well as detailed explanation on how to install with step-by-step instructions. This installation guide is valuable for both novice and professional users. You can refer to this as a guide for installing and setting up the machine.



- Read the safety information before using the machine.
- If you have a problem using the machine, refer to the troubleshooting chapter. Refer to User's Guide on the User's Guide CD.
- Use Index to find information.
- All the illustrations in this installation guide may differ from your machine depending on its options or models.
- The procedures in this user's guide are mainly based on Windows XP.
- Procedures in this user's guide are mainly based on CLX-9252/9352 Series. For available options, refer to the optional goods by models (see "Optional goods by models" on page9).
- The options related to color are only available for CLX-9252/9352 Series.

Setting up the hardware

We recommend you leave to setting up the hardware to the installation engineer from Samsung or the dealership where you bought the machine.

This chapter gives you step-by-step instructions for setting up the hardware. We recommend you set up the hardware following the order in this chapter.

This chapter includes:

- Installation environment
- Machine configuration
- Optional goods by models
- Installation flow of the hardware
- Unpacking and placing the hardware
- Installing the cabinet stand, optional dual cassette feeder or optional high capacity feeder
- Removing the scanner locking screw
- Putting the rubber packings
- Installing the toner cartridges
- Installing the imaging units
- Installing other options
- Loading paper
- Connecting a printer cable
- Turning the machine on

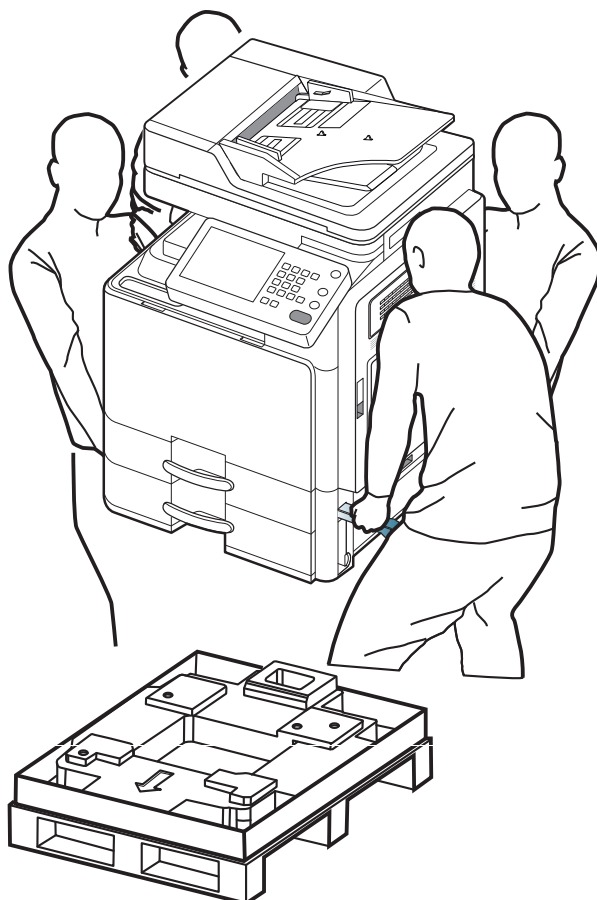
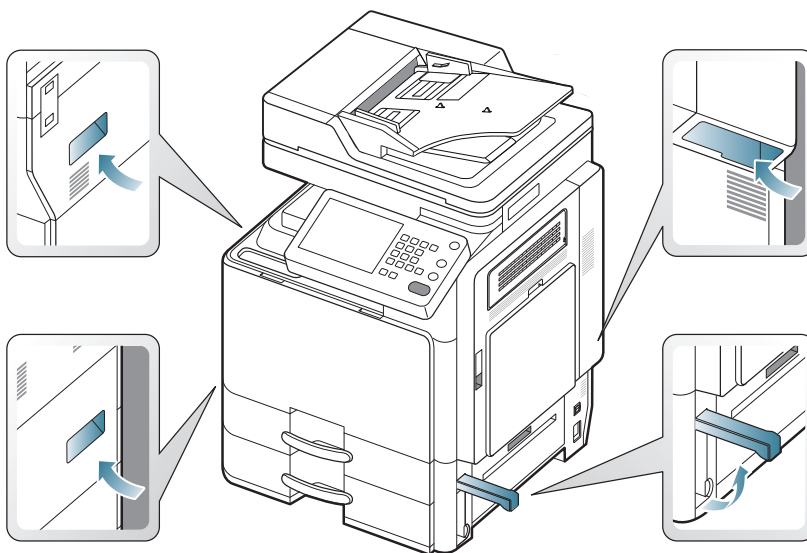


Be sure to go through the following before setting up the hardware:

- If you are installing the machine after moving it from a cold to warm location, leave the machine unpacked for at least two hours so that the machine is fully adapted to the site temperature, avoiding image faults caused by condensation (The term “condensation” refers to the formation of droplets of water on the surface of a metal object brought from cold to warm place, i.e., as the result of the rapid cooling of the moisture (vapor) around the object).
- Installation engineer must prepare the screw drivers and diagonal-cutting pliers.



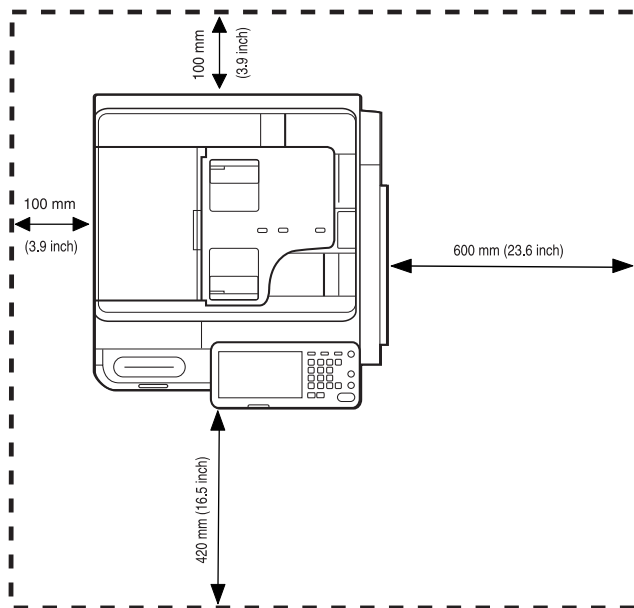
The body of this machine weighs about 113.4 Kg (250.00 lbs) to the maximum including the trays. Use safe lifting and handling techniques. If you need to move this machine, you need at least four people. Use the lifting handles, as shown. If less than four people attempt to lift the machine, you can sustain back injury.



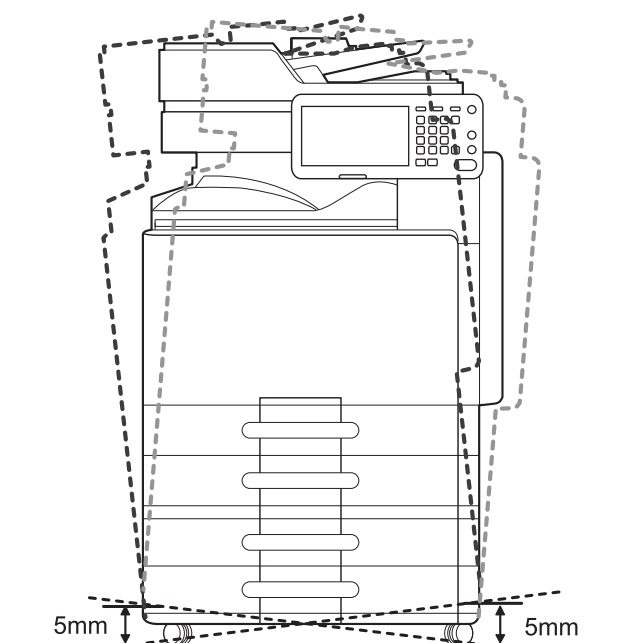
Installation environment

Make sure to have the below recommended environment before you install the machine.

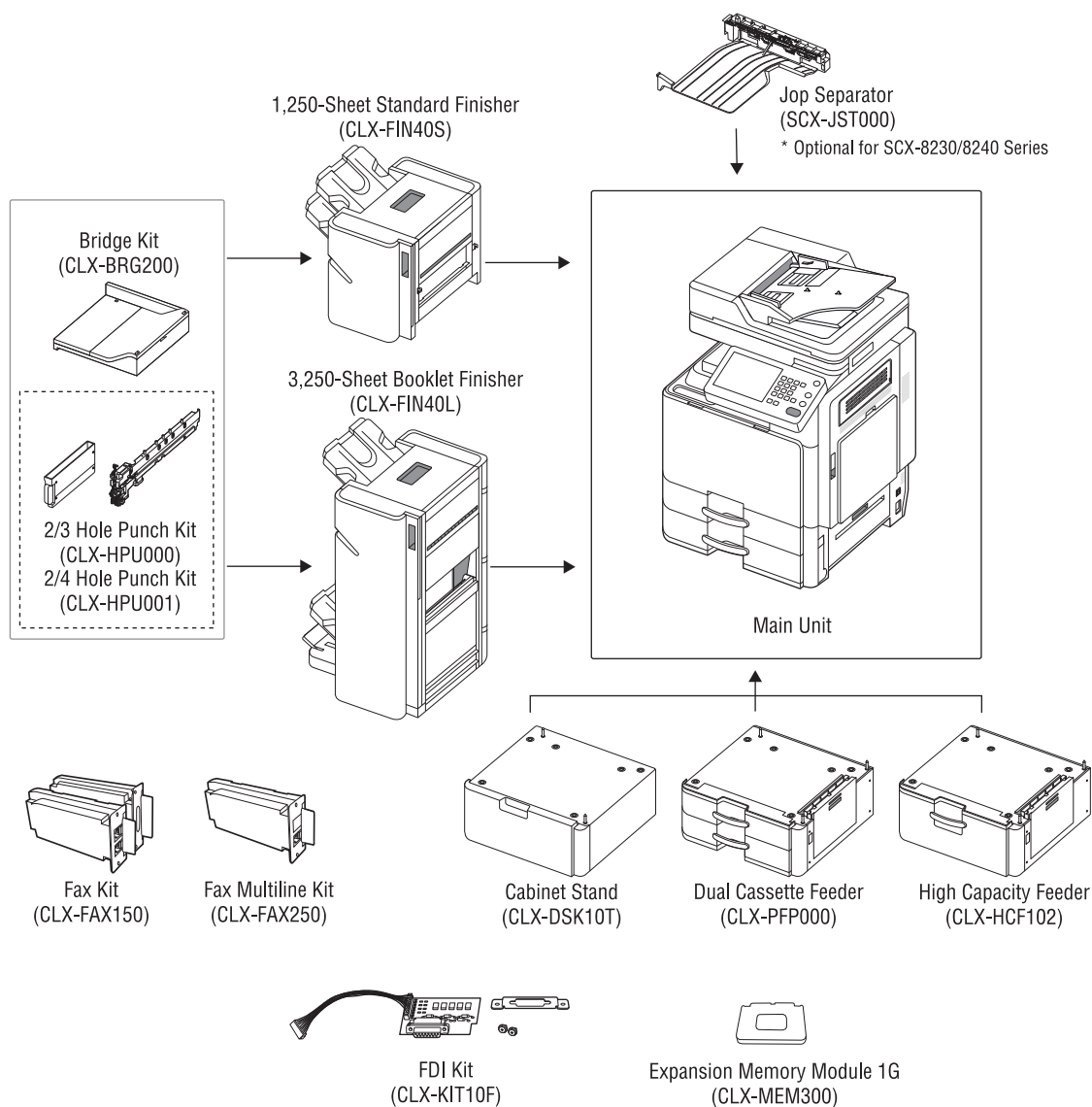
- Range of temperature
 - **Operation:** 10 and 32 °C (50 and 90 °F)
 - **Storage:** -20 and 40°C (-4 and 104 °F)
- Range of humidity
 - **Operation:** 20 and 80% RH
 - **Storage:** 10 and 90% RH
- Select a level, stable, vibration-free surface on which to install the machine.
- Select an area with adequate air circulation.
- Avoid areas near windows, with exposure to direct sunlight, or sources of heat and air conditioning.
- Avoid areas of high humidity and with possible exposure to dust or moisture (e.g. rain).
- Allow extra space to open doors and trays.



- Place the machine on a flat, stable surface in order to avoid tilting the machine more than 5 mm (0.20 inch). Printing quality may be affected if the machine is tilted too much.



Machine configuration



Optional goods by models

The machine is designed to support all of your document needs from printing and copying to more advanced networking solutions for your business. Some optional goods may not be available depending on models or countries.

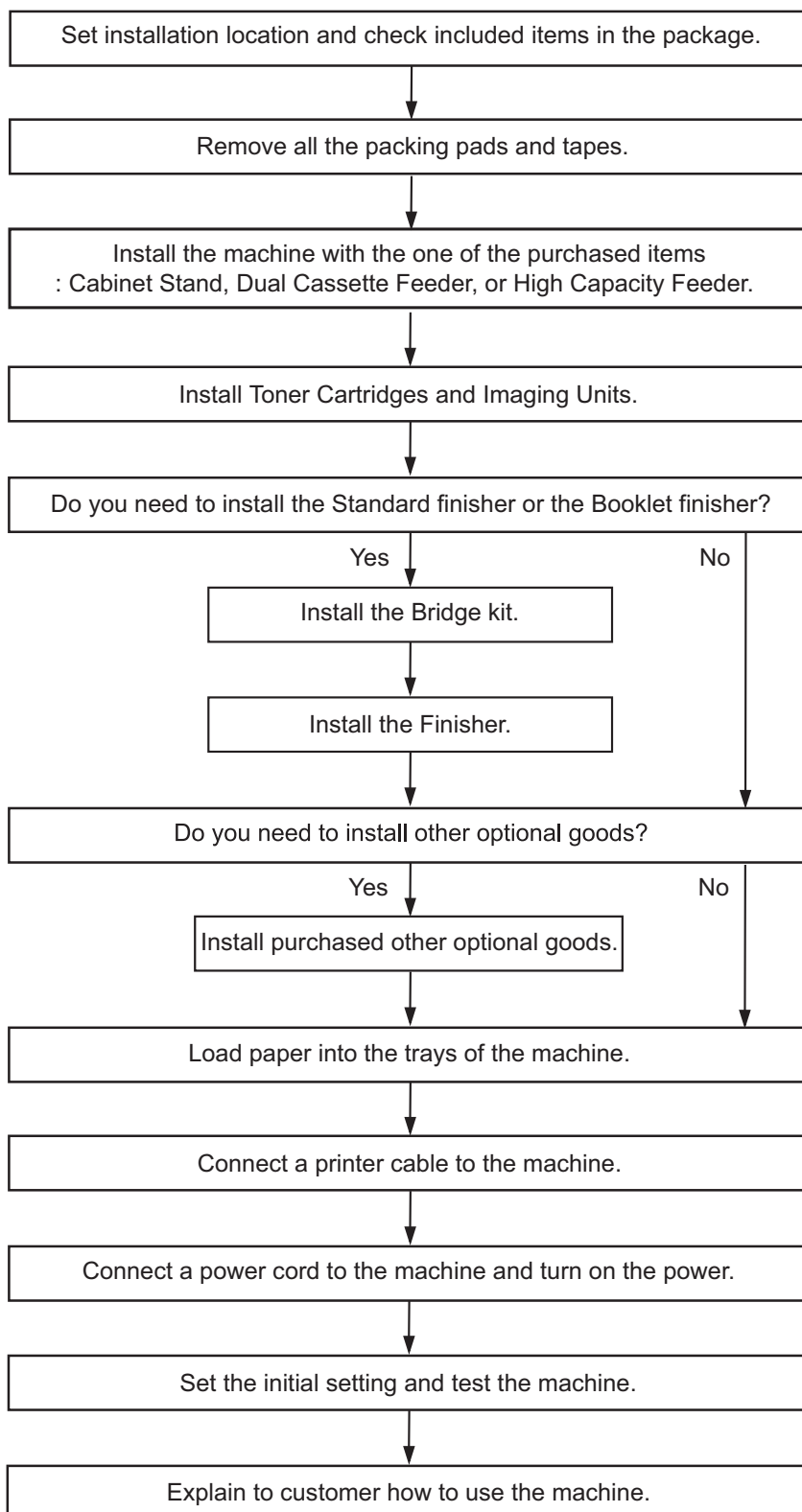
Optional goods by models include:

OPTIONAL GOODS	CLX-9252 SERIES CLX-9352 SERIES	SCX-8230 SERIES SCX-8240 SERIES
Job Separator		o
1,250-Sheet Standard Finisher	o	o
3,250-Sheet Booklet Finisher	o	o
Bridge Kit	o	o
2/3 Hole Punch Kit	o	o
2/4 Hole Punch Kit	o	o
Cabinet Stand	o	o
Dual Cassette Feeder	o	o
High Capacity Feeder	o	o
Working Table	o	o
Fax Kit	o	o
Fax Multiline Kit	o	o
FDI Kit	o	o
SmarThru Workflow X	o	o
CounThru 2	o	o
Scanner Dehumidifying Heater Kit	o	o
Cassette Dehumidifying Heater Kit	o	o
Color PM Kit - Cleaning & Transfer Set	o	o
Color PM Kit - Tray Roller Set	o	o
Color PM Kit - DADF Roller Set	o	o
Color PM Kit - Bypass Tray Roller Set	o	o

(●: Included, o: Optional, blank: not available)

Installation flow of the hardware

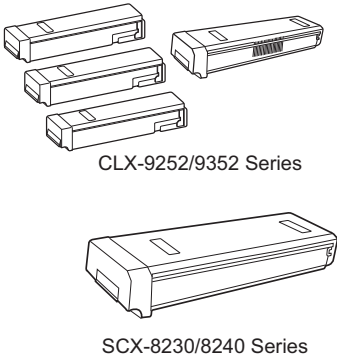
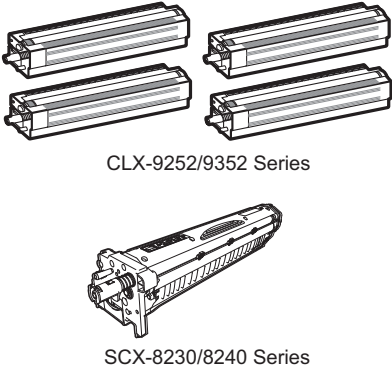
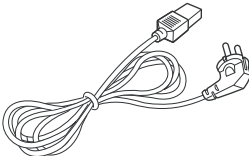
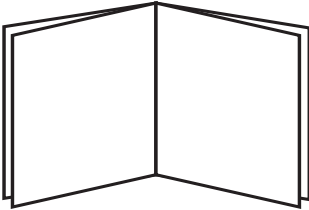
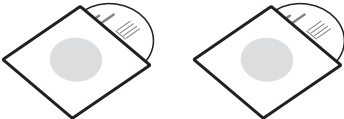

We recommend you refer to the below installation flow to install the hardware.



Unpacking and placing the hardware

Follow the steps below:

1. Select a stable location.
2. Unpack the machine and check all the enclosed items. Included items may differ depending on the country

<p>TONER CARTRIDGE</p>  <p>CLX-9252/9352 Series</p> <p>SCX-8230/8240 Series</p>	<p>IMAGING UNIT</p>  <p>CLX-9252/9352 Series</p> <p>SCX-8230/8240 Series</p>
<p>POWER CORD & USB CABLE</p> 	<p>INSTALLATION GUIDE & WARRANTY CARD</p> 
<p>SOFTWARE CD & USER'S GUIDE CD</p> 	<p>RUBBER PACKING(2)</p> 

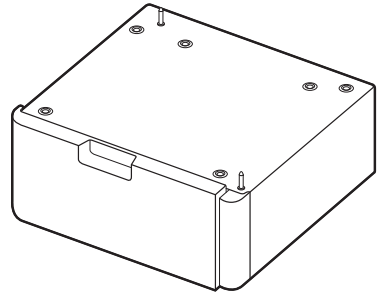
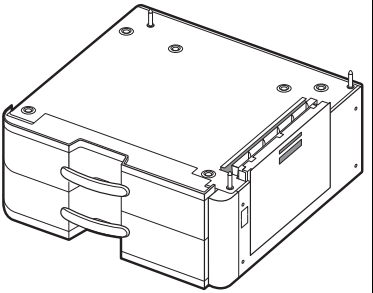
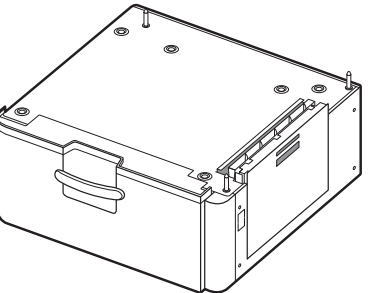
3. Remove all the tapes.



- Make sure that yellow, magenta, cyan and black toner cartridges are enclosed.
- Make sure that yellow, magenta, cyan and black imaging units are enclosed.
- If any items are missing or damaged, notify your dealer immediately.
- The appearance of the power cord may differ depending on your country's specifications. The power cord must be plugged into a grounded power socket.

Installing the cabinet stand, optional dual cassette feeder or optional high capacity feeder

When you purchased this machine, you would have chosen one of the below items. To install the item, refer to its installation guide.

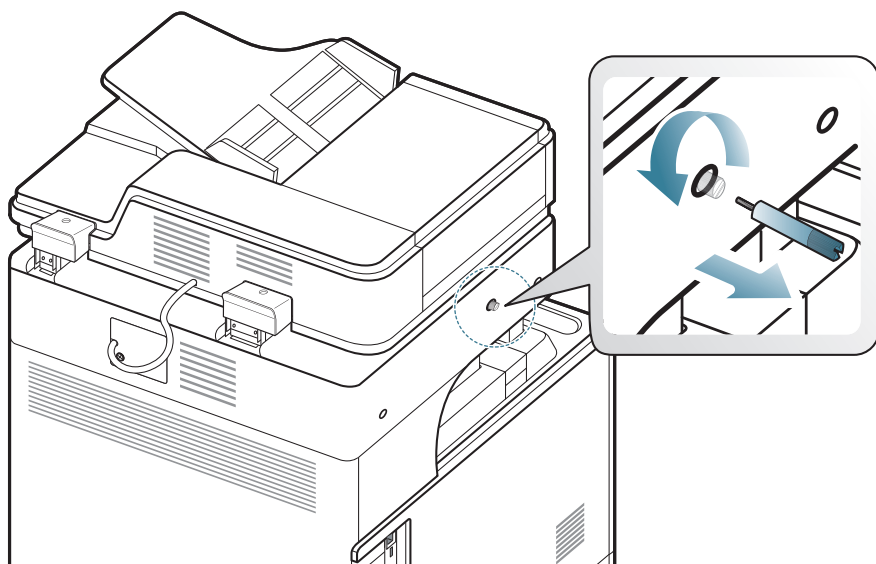
CABINET STAND	DUAL CASSETTE FEEDER	HIGH CAPACITY FEEDER
		

Removing the scanner locking screw

You need to remove the screw locking the scanner. If you do not remove it, you cannot use the copy and scan functions.



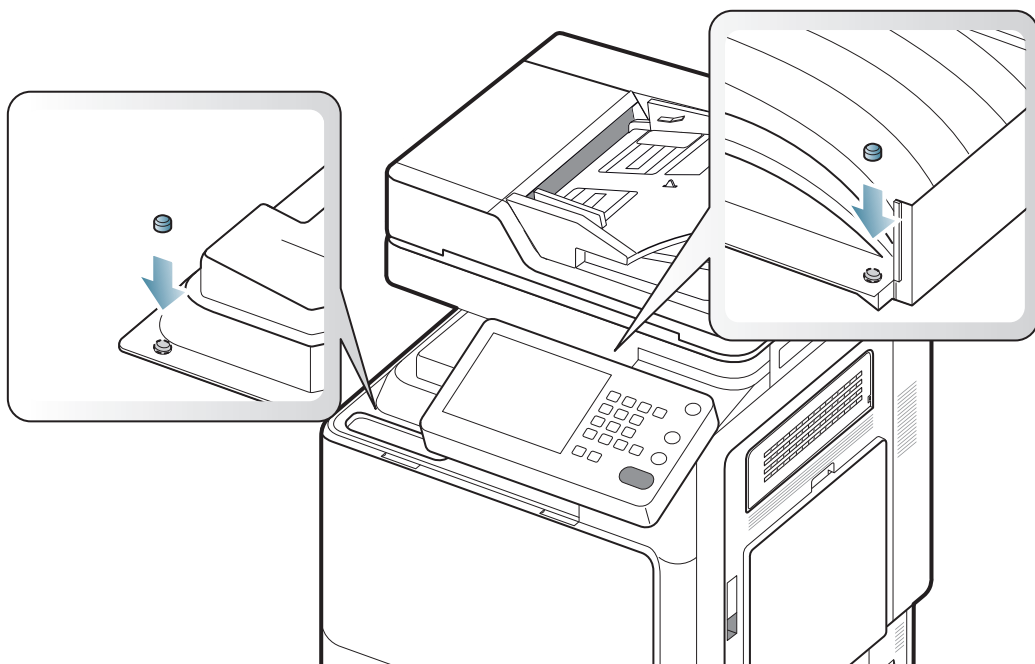
We recommend you keep the screw in the accessory box. You need to lock the scanner when moving the machine or when the machine is not in use for a long time.



Putting the rubber packings



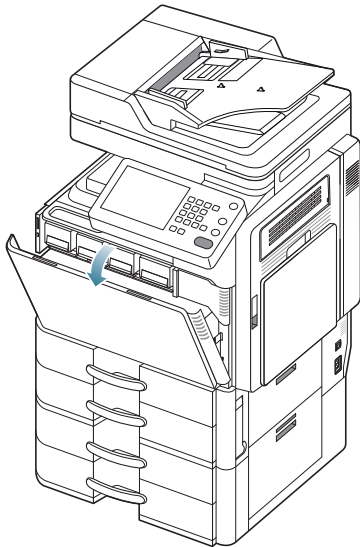
If you need to install the optional standard finisher or booklet finisher, do not put the rubber packings in the holes.



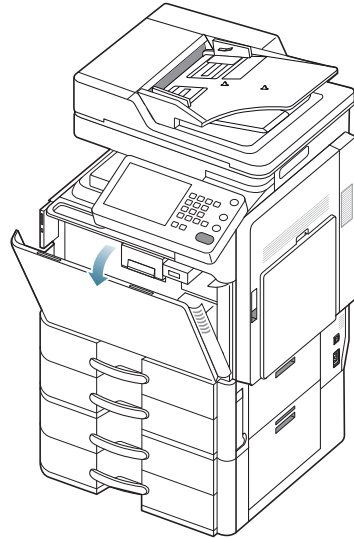
Installing the toner cartridges

Follow the steps below:

1. Open the front cover.

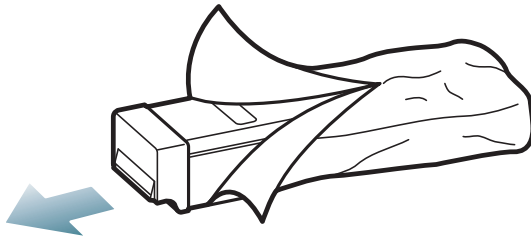


CLX-9252/9258NA/9352/9358NA Series

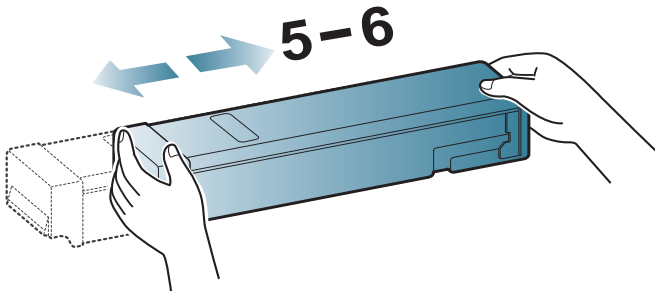


SCX-8230/8238NA/8240/8248NA Series

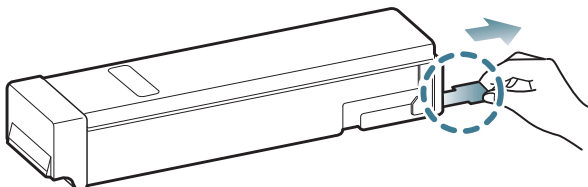
2. Take the new toner cartridges out from their packages.



3. Thoroughly shake the new toner cartridge side to side five or six times to distribute the toner evenly inside the toner cartridge.



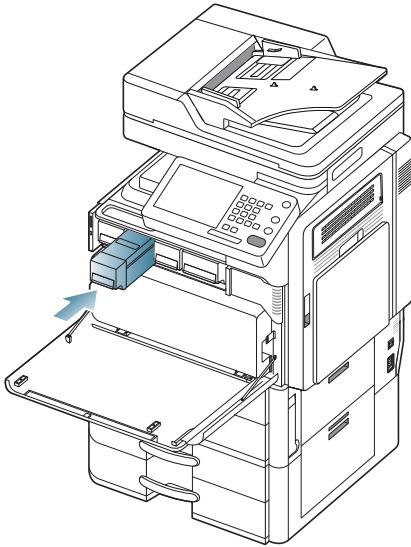
4. Pull the sealed tape out of the toner cartridge carefully.



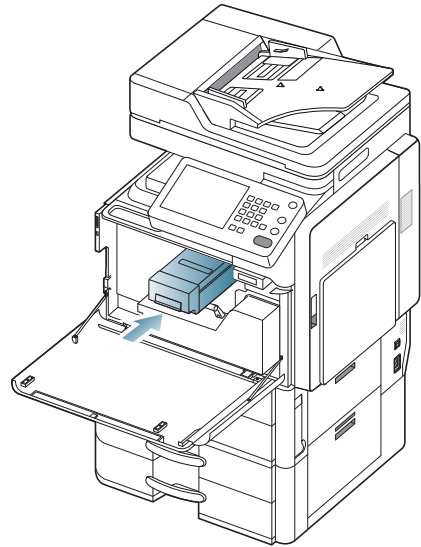


If toner gets on your clothing, wipe it off with a dry cloth and wash clothing in cold water. Hot water sets toner into fabric.

5. Hold the new toner cartridge by the handle and slide it into its corresponding positions until it locks into place. Leave the front cover opened.



CLX-9252/9258NA/9352/9358NA Series



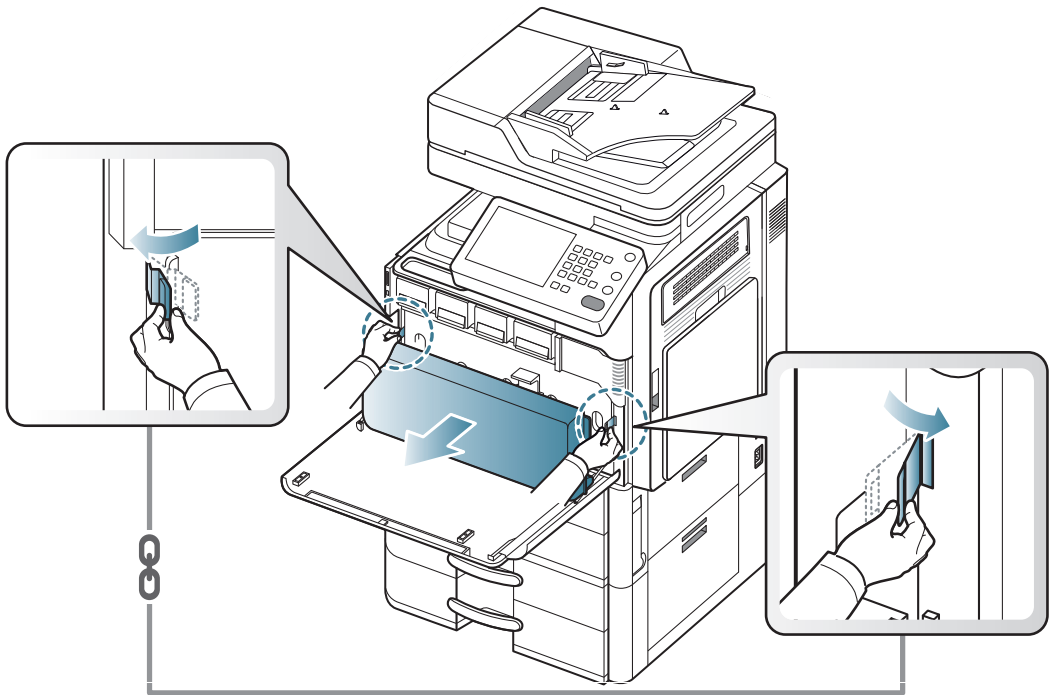
SCX-8230/8238NA/8240/8248NA Series

Installing the imaging units

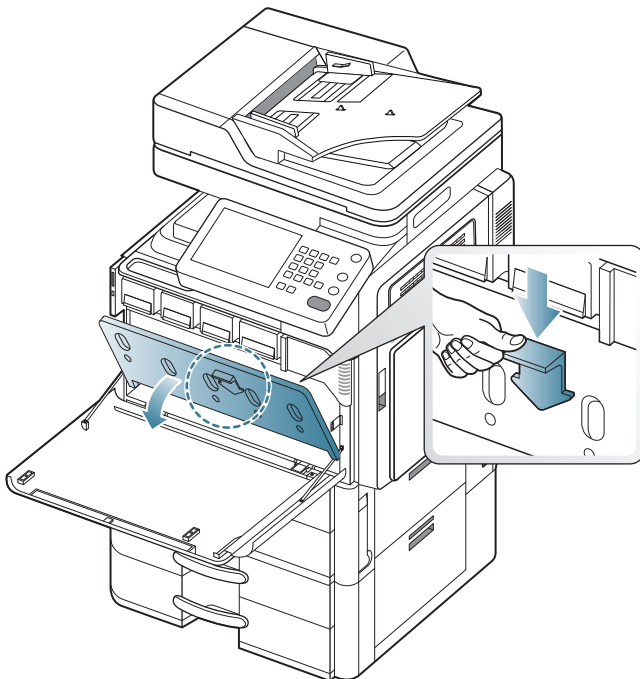
Follow the steps below:

CLX-9252/9352 Series

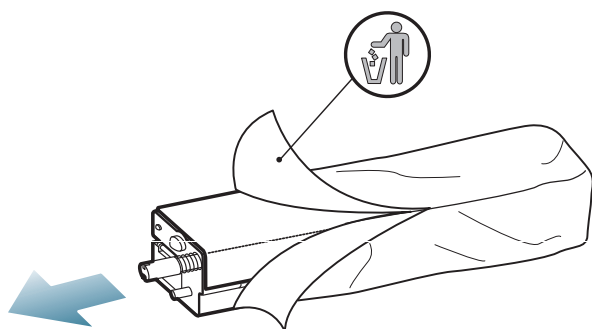
1. Squeeze the left/right locking levers and push outward at the same time. Then remove the waste toner container.



2. Squeeze and push down the lever, and open the inner cover.

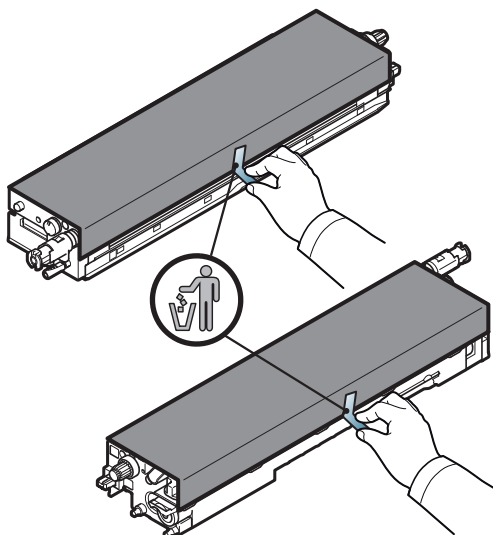


3. Take the new imaging units out from their packages.

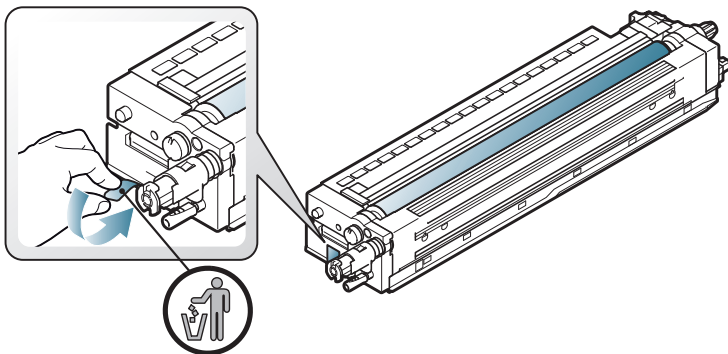


Do not use sharp objects, such as a knife or scissors, to open the imaging unit package. You could damage the surface of the imaging unit.

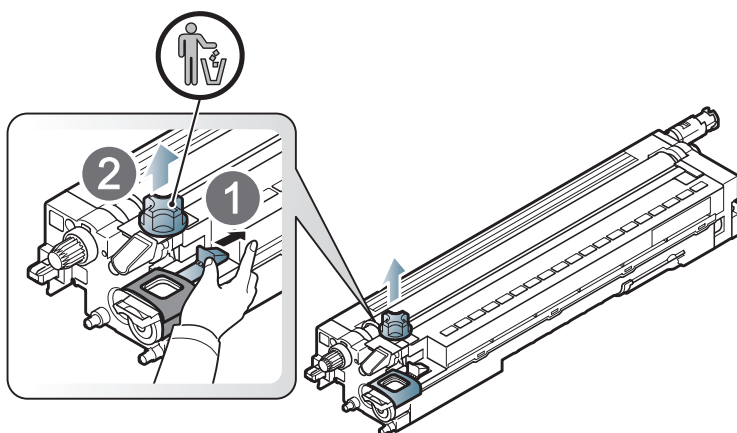
4. Remove the paper protecting the surface of the imaging unit.



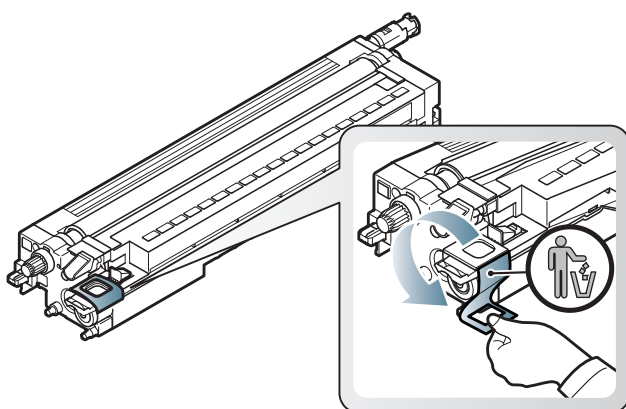
5. Remove the tape on the handle.



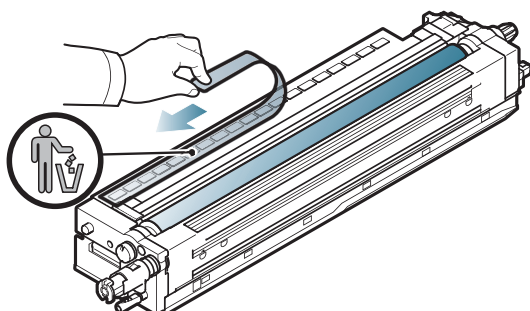
6. Hold the shutter, and pull the rubber stopper out of the developer.



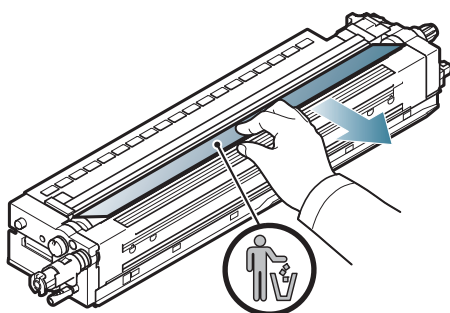
7. Remove the tape wrapped around the developer.



8. Remove the tape on the imaging unit.



9. Pull out the OPC protecting pad.

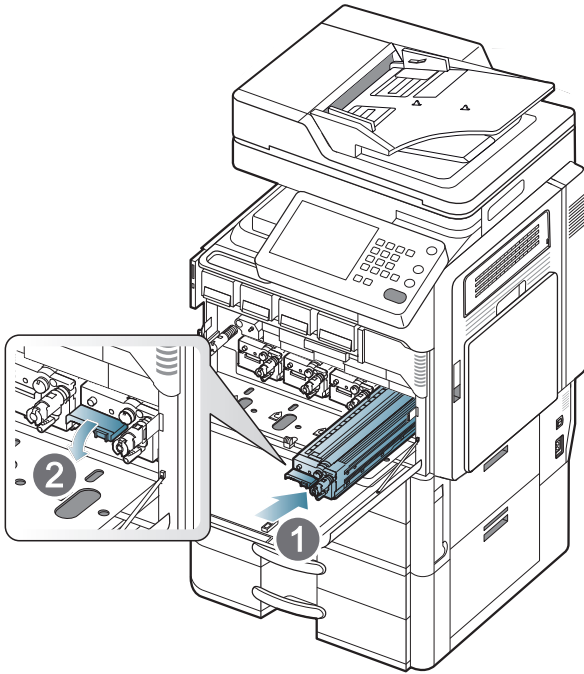


If toner gets on your clothing, wipe it off with a dry cloth and wash clothing in cold water. Hot water sets toner into fabric.

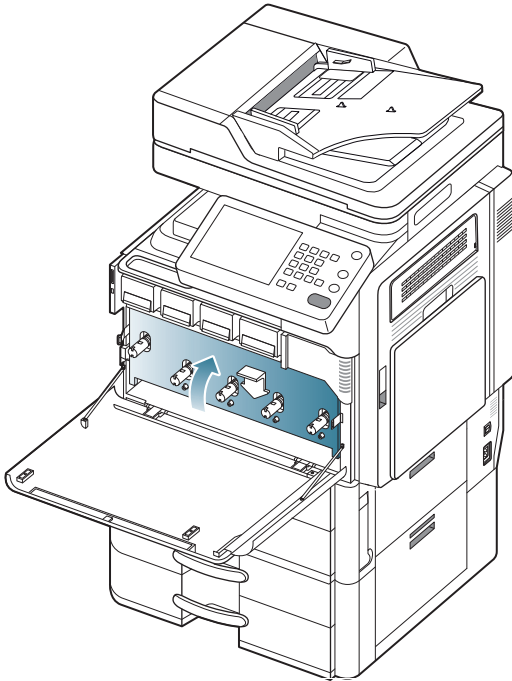


- Be careful not to scratch the surface of the imaging unit.
- To prevent damage, do not expose the imaging unit to light for more than a few minutes. Cover it with a piece of paper to protect it if necessary.

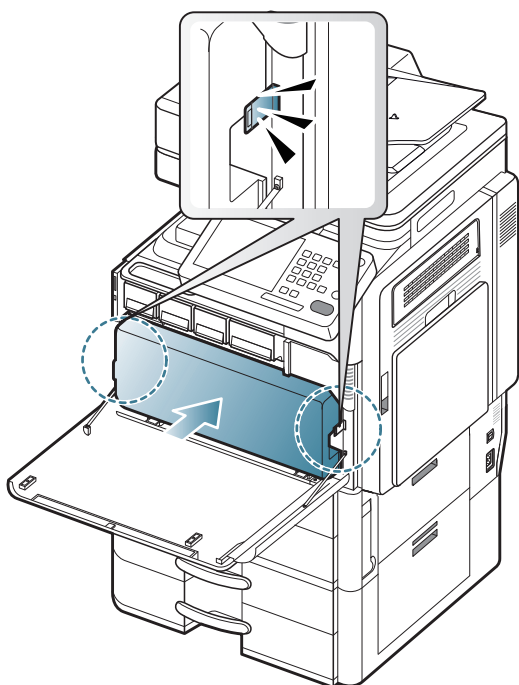
10. Labels inside the machine identify each imaging unit's position. Hold the handles on the new imaging unit, and push the imaging unit until it locks into place.



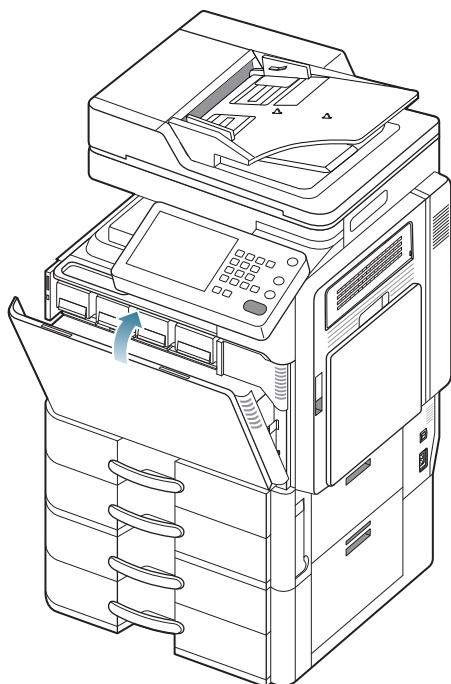
11. Close the inner cover.



12. Insert the waste toner container until it locks in place.



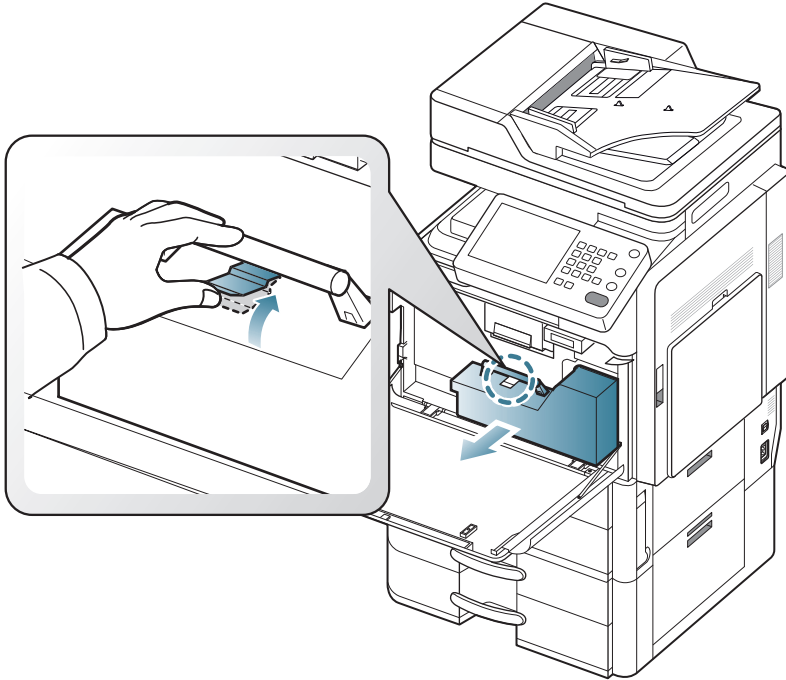
13. Close the front cover.



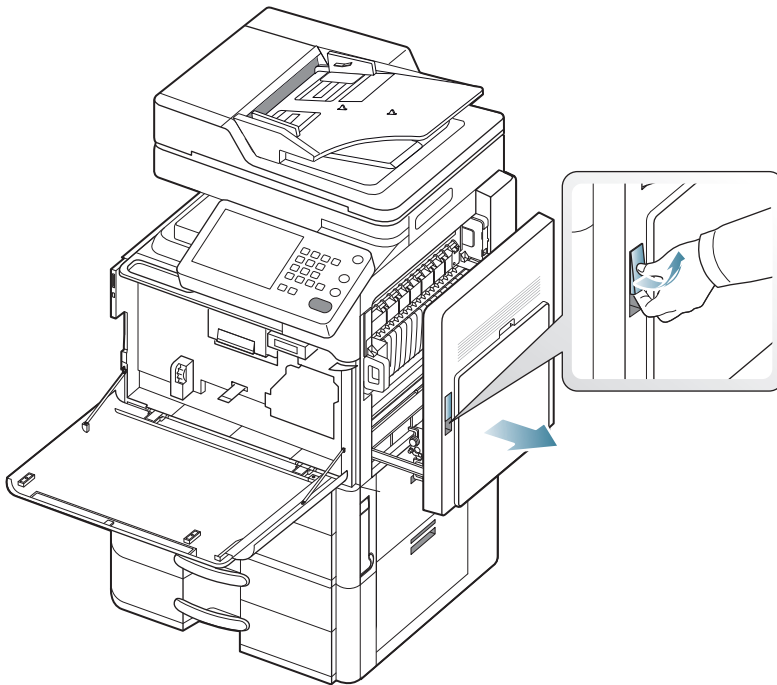
If the front cover is not completely closed, the machine will not operate.

SCX-8230/8240 Series

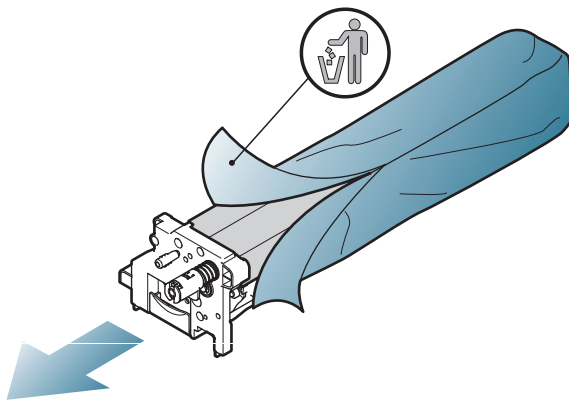
1. Lift the locking lever upward. Then remove the waste toner container.



2. Open the right door.

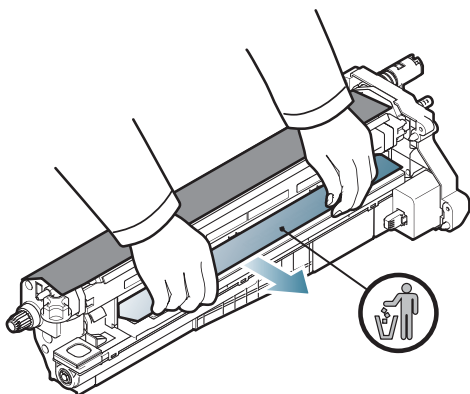


3. Remove the new imaging units from its package.



Do not use sharp objects, such as a knife or scissors, to open the imaging unit package. You could damage the surface of the imaging unit.

4. Pull out the OPC protecting pad.

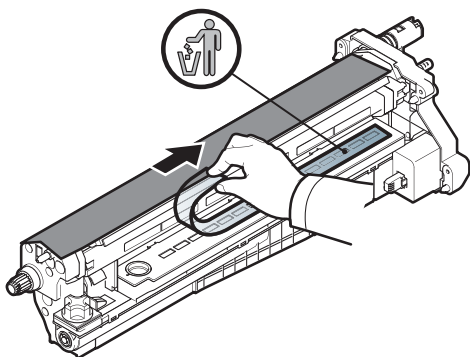


If toner gets on your clothing, wipe it off with a dry cloth and wash clothing in cold water. Hot water sets toner into fabric.

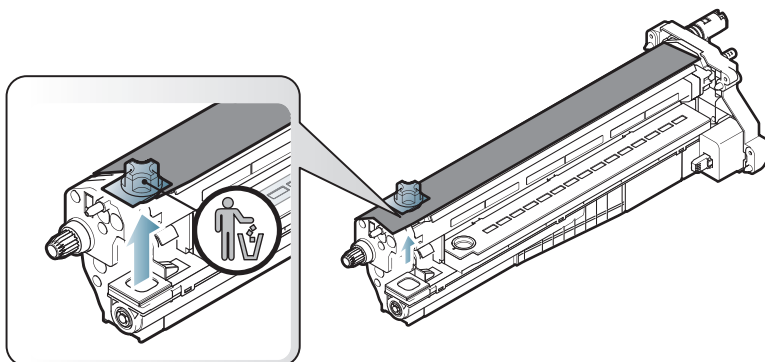


- Be careful not to scratch the surface of the imaging unit.
- To prevent damage, do not expose the imaging unit to light for more than a few minutes. Cover it with a piece of paper to protect it if necessary.

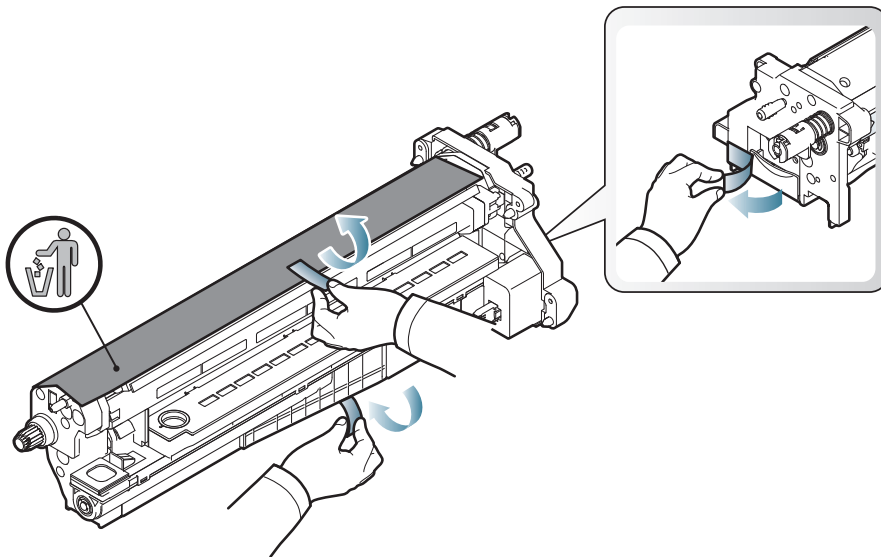
5. Remove the tape.



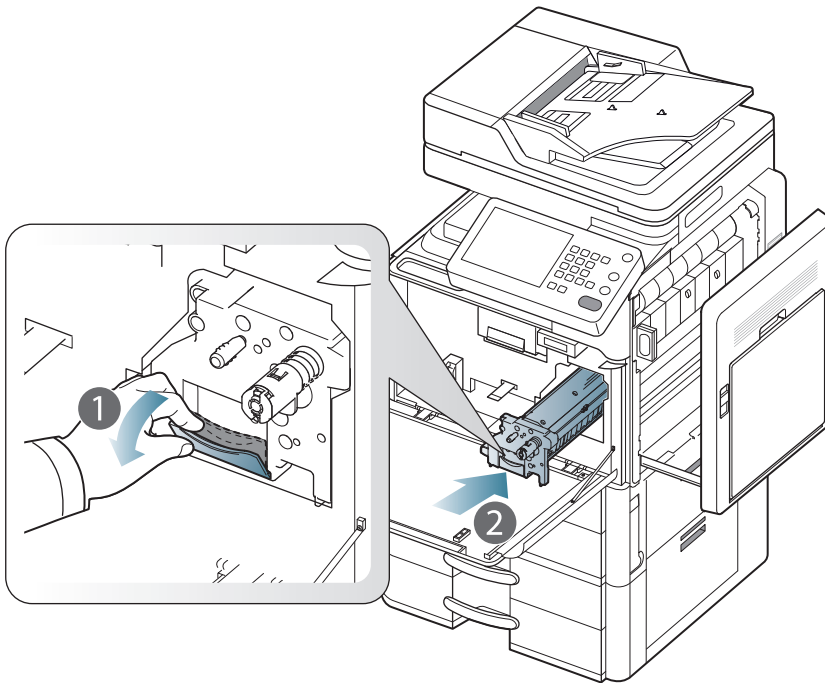
6. Pull out the rubber stopper



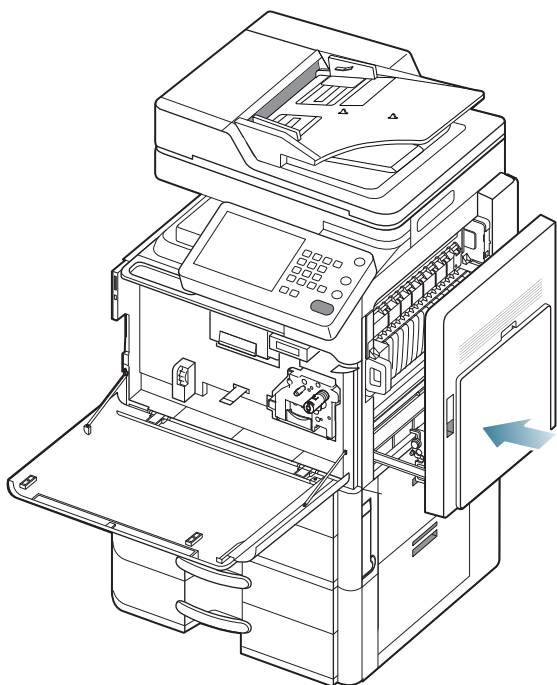
7. Remove the paper protecting the surface of the imaging unit.



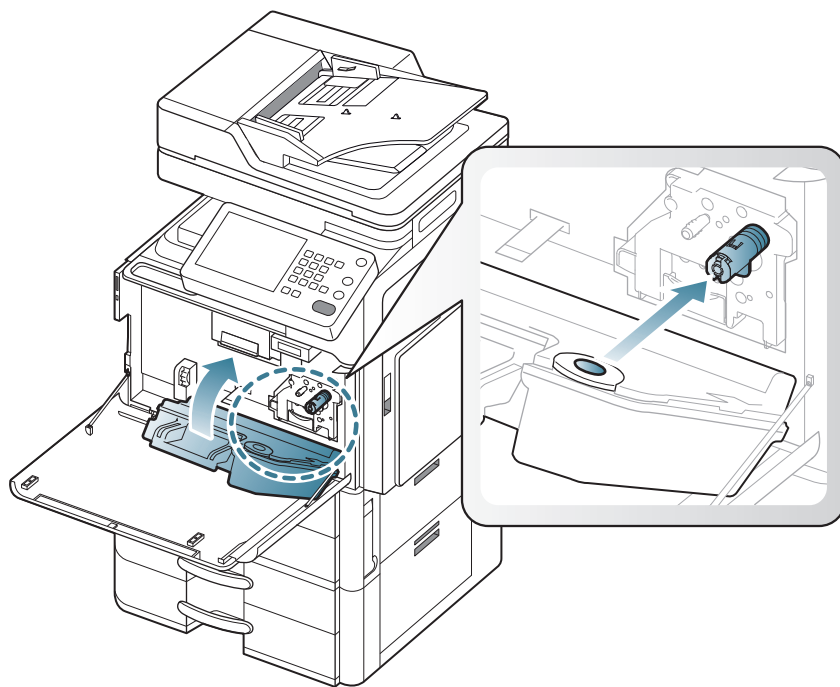
8. Hold the handles on the new imaging unit, and push the imaging unit until it locks into place



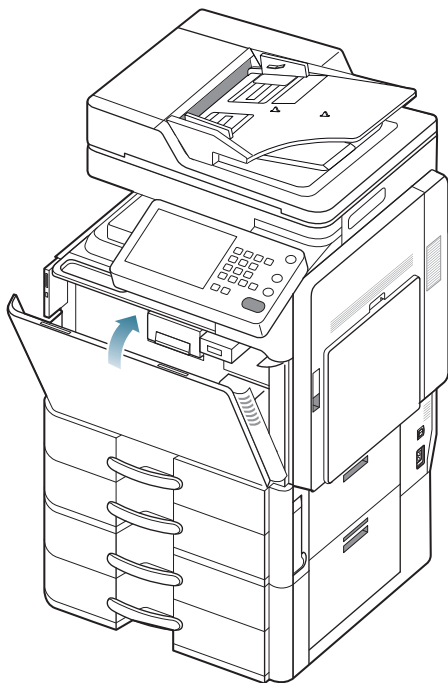
9. Close the right door.



10. Insert the waste toner container until it locks in place.



11. Close the front cover.



If the front cover is not completely closed, the machine will not operate.

Installing other options

This machine is a full-featured multi function printer that has been optimized to meet most of the users needs. Recognizing that each user may have different requirements, **Samsung** makes many options available to enhance the machine's capabilities. Refer to Supplies and Accessories guide on the User's Guide CD.

For details about how to install the options, refer to the each option's installation guide.

Loading paper

Standard tray

Load the print media you use for the majority of your print jobs into standard tray. You can also purchase an optional dual cassette feeder or optional high capacity feeder, and attach it below the standard tray. Refer to Supplies and Accessories guide on the User's Guide CD.

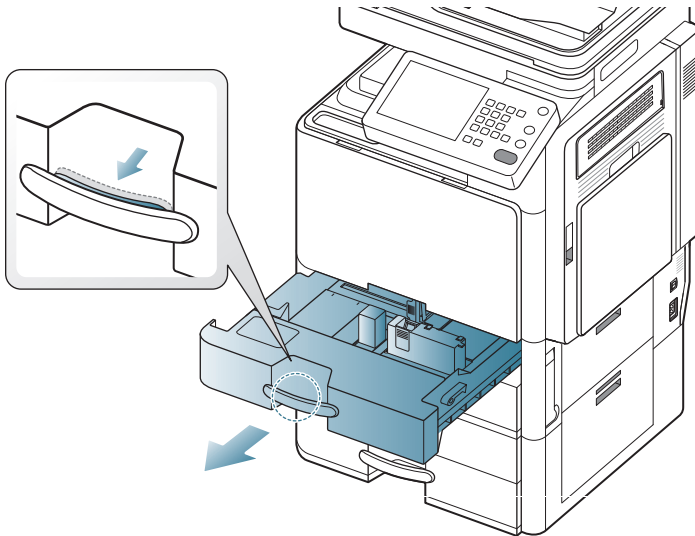


- This standard tray contains two trays (Tray 1, Tray 2).
- This standard tray holds up to 1,040 sheets of paper.
- The process to load paper in tray 1, and tray 2 is the same.
- If you have installed the optional dual cassette feeder (tray 3, tray 4) or the optional high capacity feeder, refer to the installation guide provided with them.

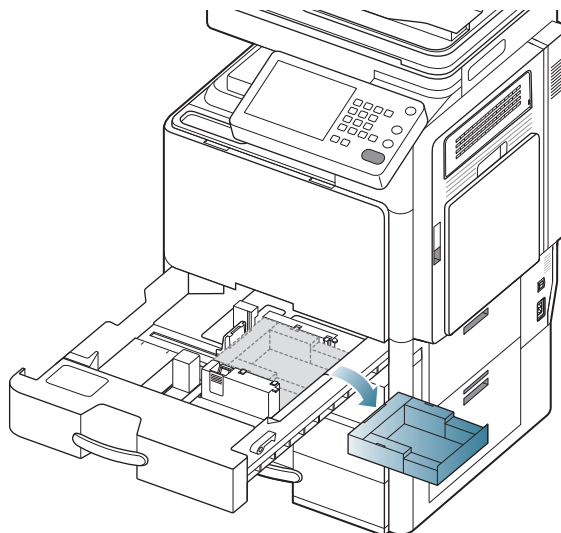


Using photographic paper or coated paper may cause problems requiring repairs. Such repairs are not covered by the warranty or service agreements.

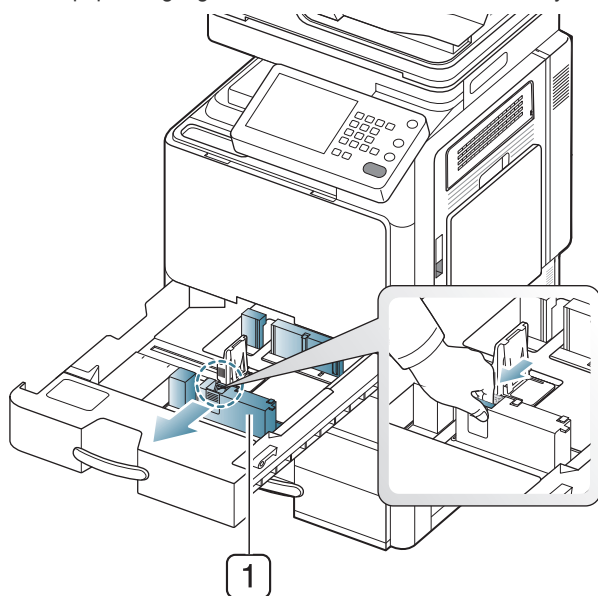
1. Squeeze the lock lever and pull out the tray.



2. Remove the packing pads and tapes.

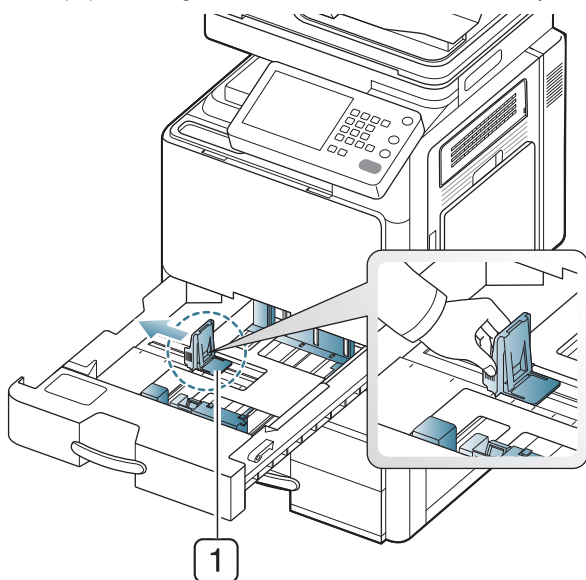


3. Squeeze the paper length guide, and slide it to the end of the tray.



1 Paper length guide

4. Squeeze the paper width guide, and slide it to the end of the tray.

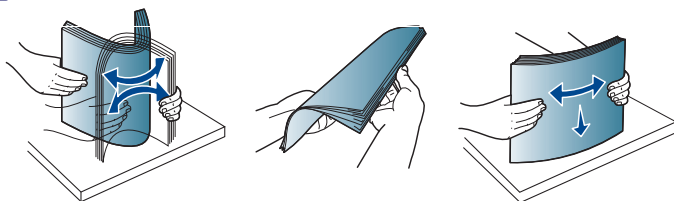


1 Paper width guide

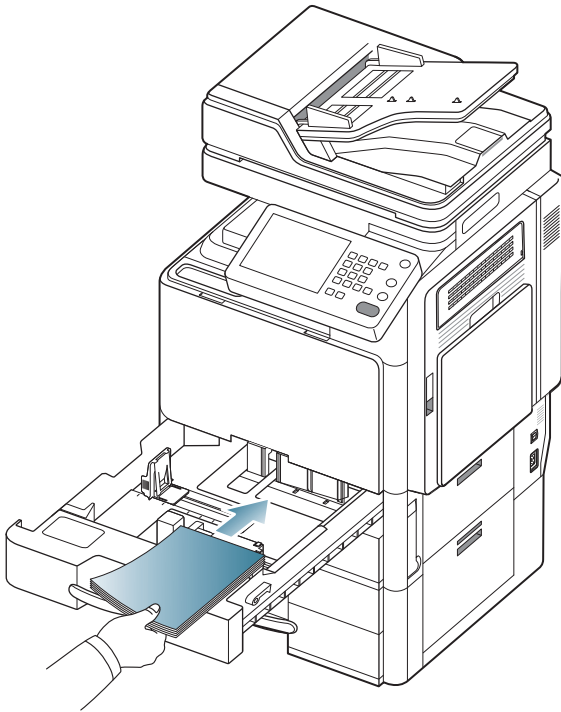
5. Flex or fan the edge of the paper stack to separate the pages before loading papers.



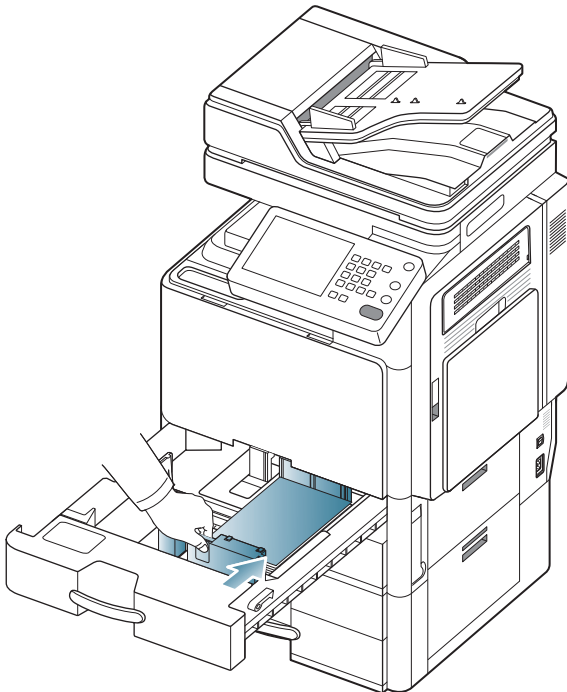
When handling the paper, be careful not to get a paper cut.



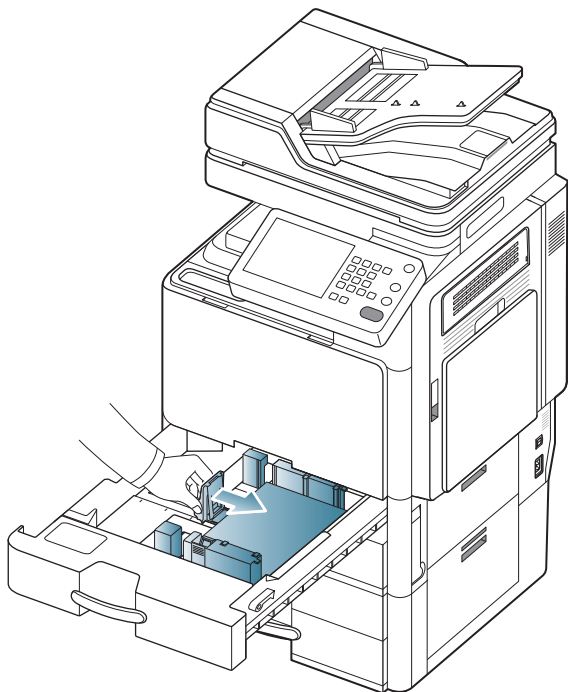
6. Load paper with the print side facing up.



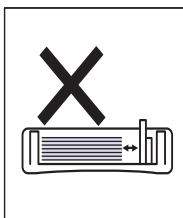
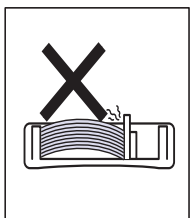
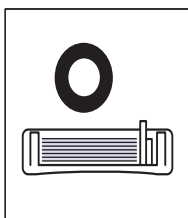
7. Adjust the paper length guide to the desired paper length.



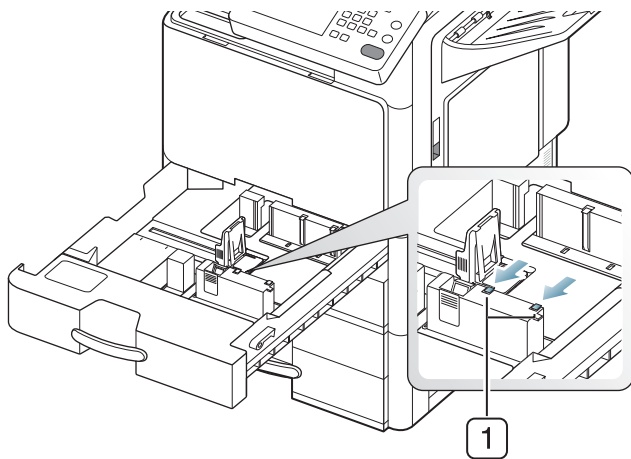
8. After loading paper into the tray, pinch the paper width guide and move it toward the stack of paper until it lightly touches the side of the stack. Do not press the guide too tightly to the edge of the paper; the guide may bend the paper.



- Do not push the paper width guide too far causing the media to warp.
- If you do not adjust the paper width guide, it may cause paper jams.

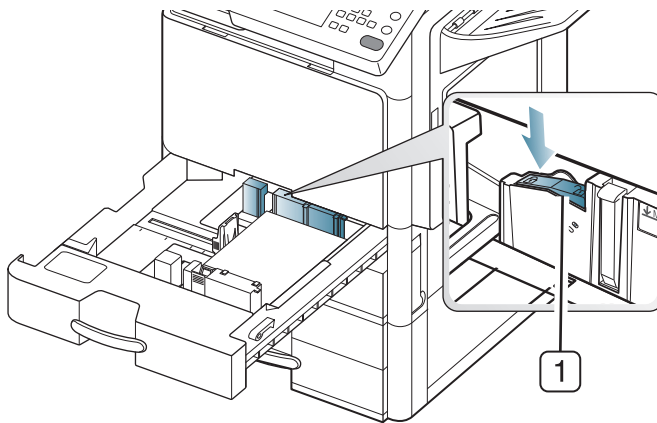


- Do not overload the tray with paper. Otherwise, it may cause paper jams. Make sure that the paper is below the maximum paper capacity guide inside the tray.



1 Paper capacity guide

9. Fix the paper length guide using the locking switch. Release the locking switch to load a different sized paper



1 Locking switch

10. Insert the tray back into the machine.

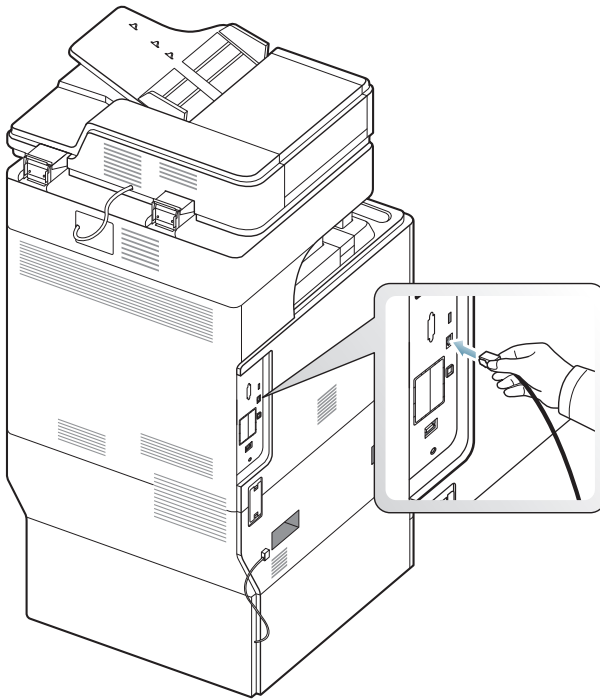


- When you load special type of paper such as thick paper, transparency, etc, you need to set the paper type to improve the quality of your printed documents. Refer to User's Guide on the User's Guide CD.
- If you have problems with paper feeding, check the media specification. Then, try placing one sheet at a time in the multi-purpose tray. Refer to User's Guide on the User's Guide CD.
- The settings made from the machine driver override the settings on the control panel. Refer to User's Guide on the User's Guide CD.
- For details about how to use other trays or various papers, refer to User's Guide on the User's Guide CD.

Connecting a printer cable

Using a network cable

This machine has a built-in network interface card. You can connect your machine to a network using a network cable. Connect your machine to the network with a network cable:

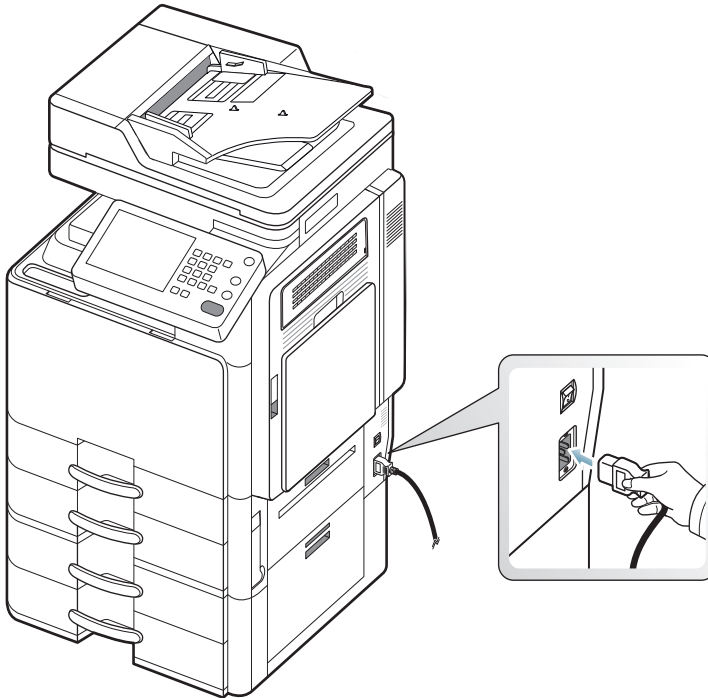


Turning the machine on

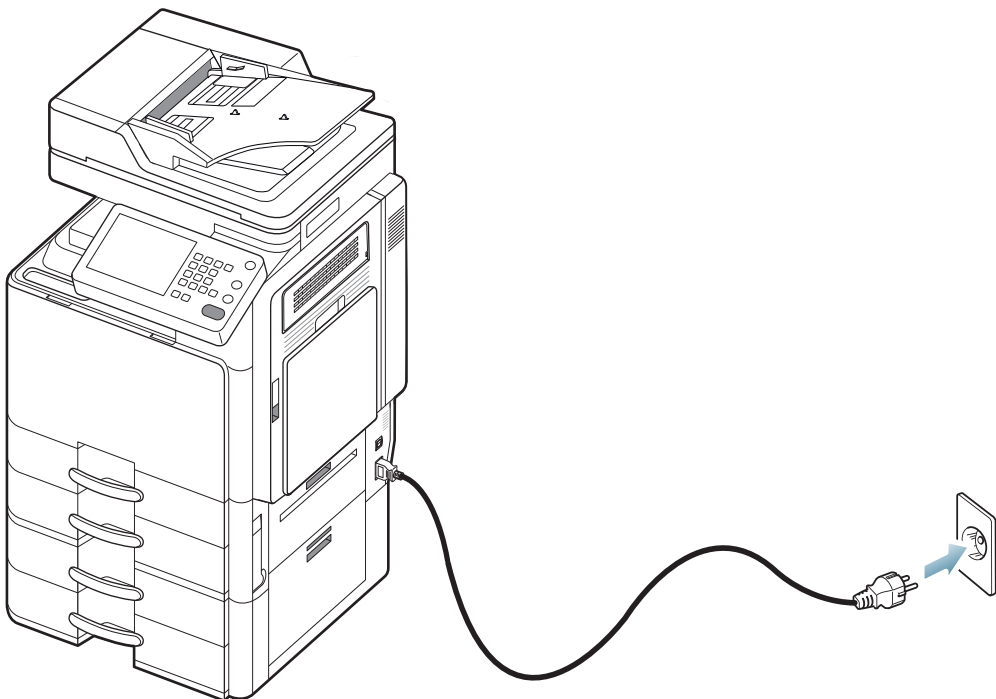


Keep in mind that you should use the power cord supplied with the machine. Otherwise, it can cause damage or fire to the machine.

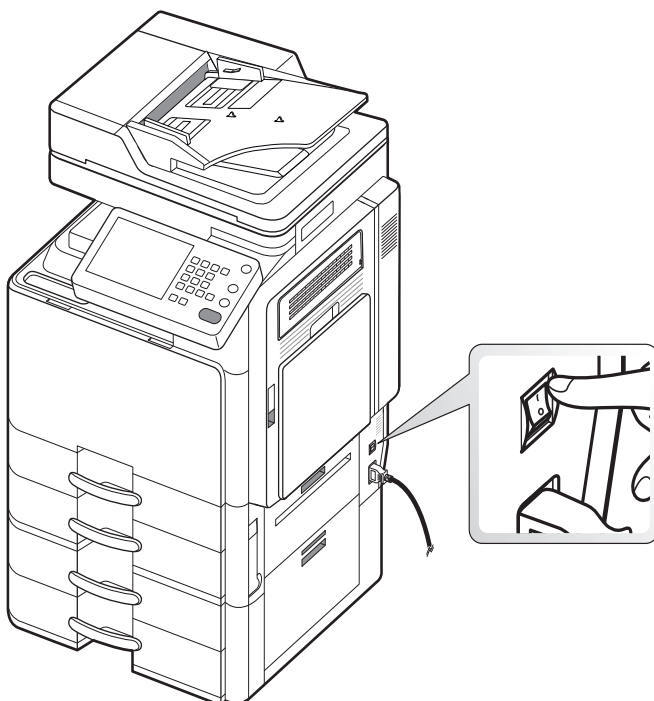
1. Plug the power cord into the power receptacle.



2. Plug another side into a properly grounded AC outlet.



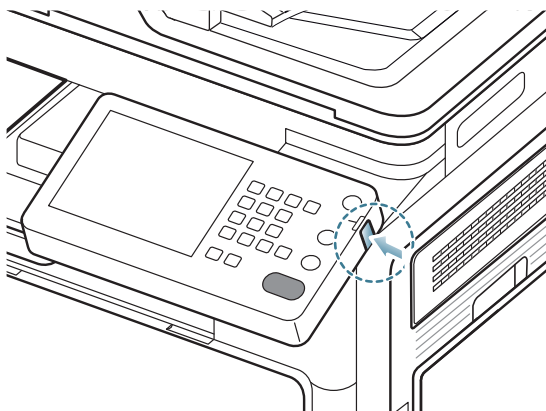
3. Turn on the power switch.



- Some parts inside of the machine may be hot when power is on, or after printing. Be careful not to burn yourself when working inside the machine.
- Do not disassemble the machine when it is turned on or plugged in. Doing so may give you an electric shock.



If you need to turn the machine off, press the **Power** button for more than two seconds on the right side of the control panel. When the confirmation window appears, press **Yes** from the display screen, then wait until power is turned off automatically.



If you turn the machine off directly using the power switch, it could cause the hard disk problem in the machine.

Initial settings and testing of the machine

After hardware installation is completed, initial settings and some tests are necessary before using the machine. This chapter gives you step-by-step instructions for initial settings and tests. For detailed information about setting up the machine, refer to the User's Guide or Administrator's Guide on the User's Guide CD.

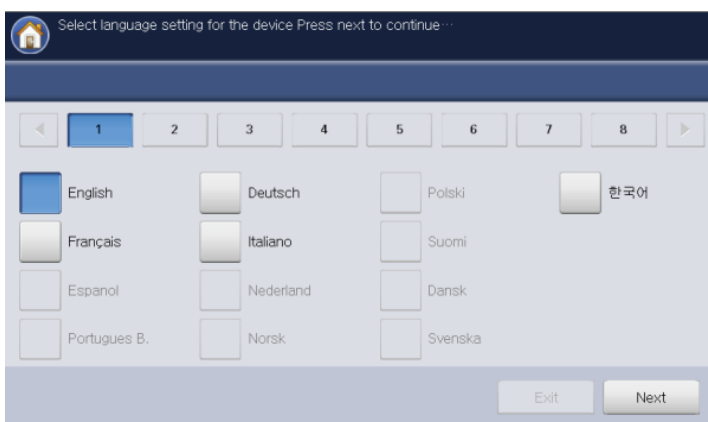
This chapter includes:

- Initial setting
- Print adjustment (Dual cassette feeder or High capacity feeder)
- DADF skew test and adjustment

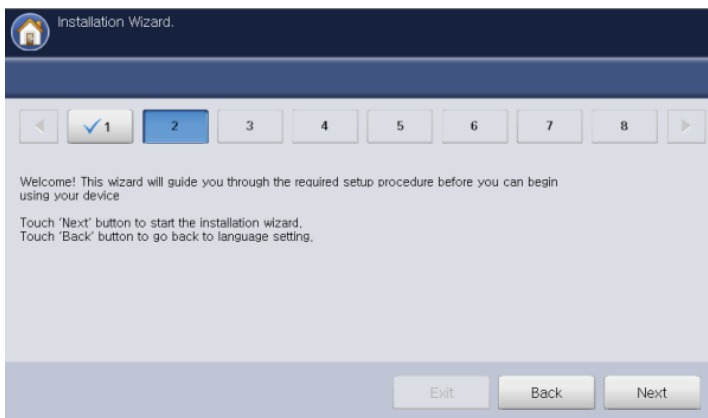
Initial setting

When you turn the machine on after hardware installation, you can see the initial setting menu on the display screen. You need to follow the steps below. You can also change the setting values on the control panel and SyncThru™ Web Service. For the detailed information about setting up the machine, refer to the User's Guide or Administrator's Guide on the User's Guide CD.

1. Press a language for using on the display screen and then press **Next**.

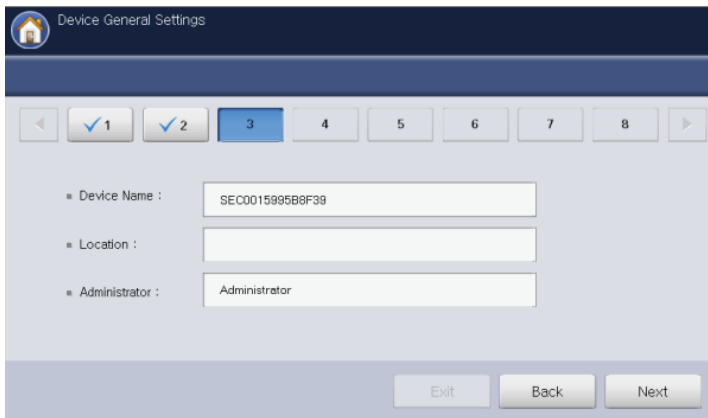


2. Read the note and then press **Next**.



If you want to reset the language, press **Back** and select the language you want.

3. Press the **Device name** input area.



The pop-up keyboard appears.

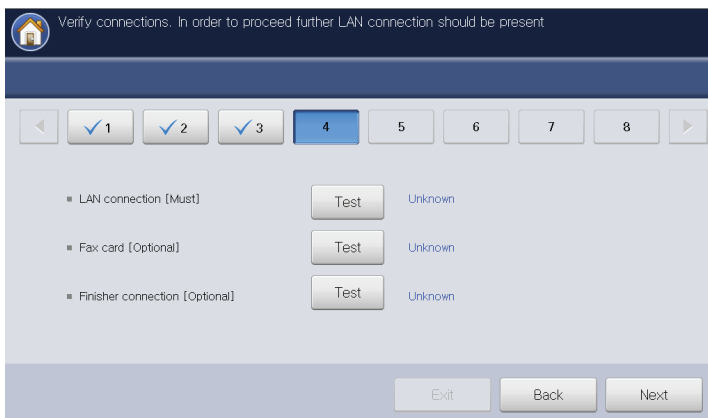


Remove the existing device name and enter the device name you want to use and then press **OK**. Then press **Next**. Keep in mind to enter the device name to be used on the network.



- If necessary, enter the location of the machine in the **Location** input area.
- If necessary, enter the information in the **Administrator** input area for the person to contact when any problem occurs on the machine.

4. Press the **Test** button to verify the LAN connection. When **Connected** appears after pressing **Test**, press **Next**.

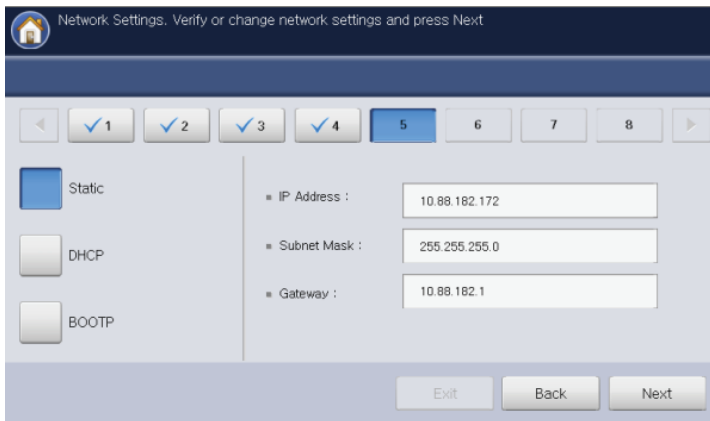


If **Not connected** appears, make sure that the machine is connected to the network then verify the LAN connection again.



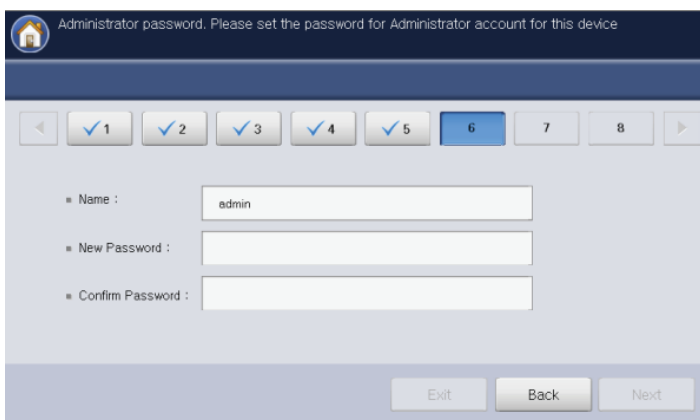
- If a network connection problem persists, contact your network administrator.
- If you installed an optional fax kit or finisher, press each **Test** button for verify connection of them.

5. Press **Static** and enter the IP address, subnet mask, and gateway in each input area using the pop-up keyboard or the numeric keypad on the control panel. Then press **Next**.



- If a new IP address is assigned automatically by a DHCP or BOOTP, press **DHCP** or **BOOTP**.
- If you are not sure about your network environment, contact your network administrator.

6. Press the **Name** input area.



- The pop-up keyboard appears.
- The **admin** is entered as a default. If you want to replace with another name, remove **admin** and enter a new administrator name and then press **OK**.
- Press the **New Password** input area. The pop-up keyboard appears.
- Enter the password to use and then press **OK**. This password is to be used for accessing the administrator account.
- Press the **Confirm Password** input area. The pop-up keyboard appears.
- Re-enter the password to confirm it, then press **OK** and **Next**.

7. Set the time on the machine. You can set the time manually or use **SNTP (Simple Network Time Protocol)** to set time automatically using the time server.

When you press **Manual**:

- a. Set the date, time and time offset using the left/right and up/down arrows.



Example for selecting the time offset: If your local time is 4 hours faster than **UTC (Universal Time Coordinated)**, press the right arrow until **+4** shows.

- b. Press **Result** to check the **Manual** setting and then press **Close**. If necessary, try to set it again.

- c. Press **Next**.

When you press **SNTP (Simple Network Time Protocol)**:

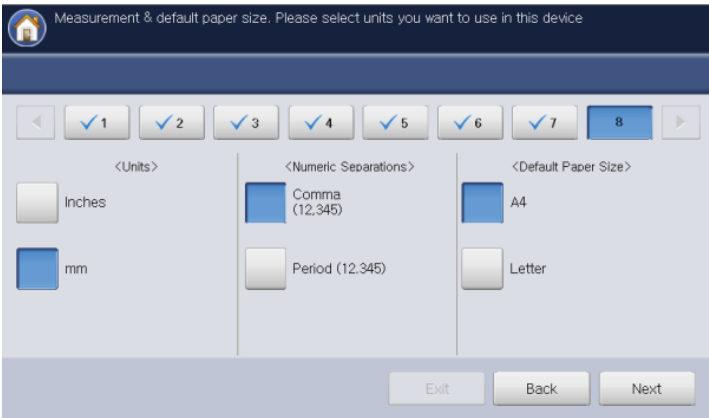
- a. Set the date, time and time offset using the left/right arrows.



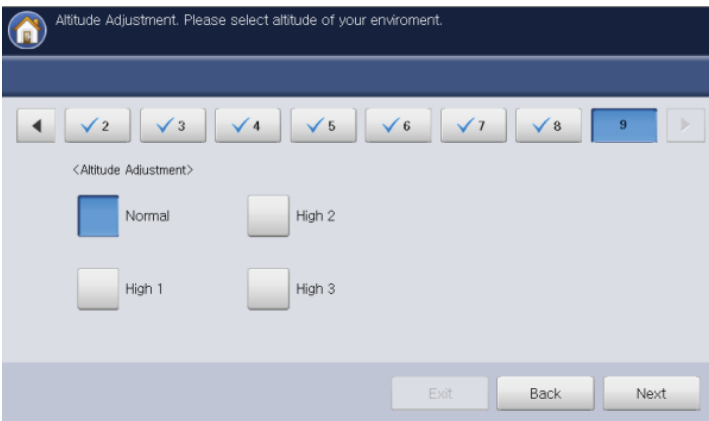
Example for selecting the time offset: If your local time is 4 hours faster than **UTC (Universal Time Coordinated)**, press the right arrow until **+4** shows.


- b. If you press **IP**, go to step c. If you press **Host**, step e.
- c. Press the **IP** input area. The pop-up keyboard appears. Enter a IP address which provides the time information, and then press **OK**.
- d. Press the **Port No** input area. The pop-up keyboard appears. Enter a port number and then press **OK**. Go to step h.
- e. Press the **Host** input area. The pop-up keyboard appears. Enter a host name manually. You can also press **Host List** and then select a host name in **Time Server List** and press **Close**.
- f. Press the **Port No** input area. The pop-up keyboard appears. Enter a port number and then press **OK**.
- g. Press **Result** for checking the **SNTP** setting and then press **Close**. If necessary, try to set it again.
- h. Press **Next**.

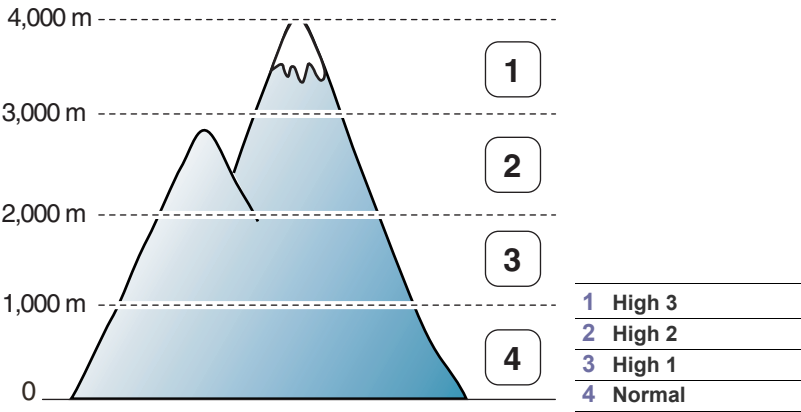
8. Select a unit, numeric separation, and standard paper size to be used on the display screen. Then press **Next**.



9. Select an altitude level where the machine is installed. The print quality is affected by atmospheric pressure, which is determined by the height of the machine above sea level. Then press **Next**.



 Before you set the altitude value, determine the altitude where you are.



10. Press **Community Name** input area. The pop-up keyboard appears, and then enter a **SNMP Community** name and press **OK**. Then set access permission using **Read Access** or **Write Access**. If you do not know **SNMP Community**, contact your network administrator. Then press **Finish**.



If you want to skip this step, just press **Finish**.

11. The **Completed** window appears. Press the **Close** button. The machine restarts.

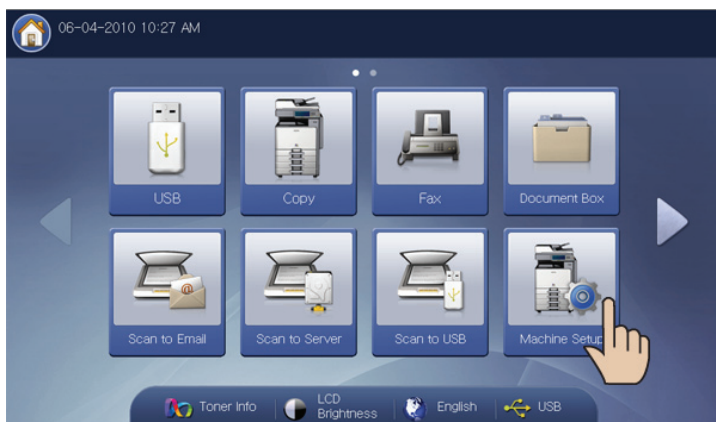
Print adjustment (Dual cassette feeder or High capacity feeder)

If you have installed the dual cassette feeder or high capacity feeder on the machine, you have to print adjustment before using the machine. The procedure of print adjustment for both cassette feeders is same. The explanation in this user's guide is based on the dual cassette feeder.

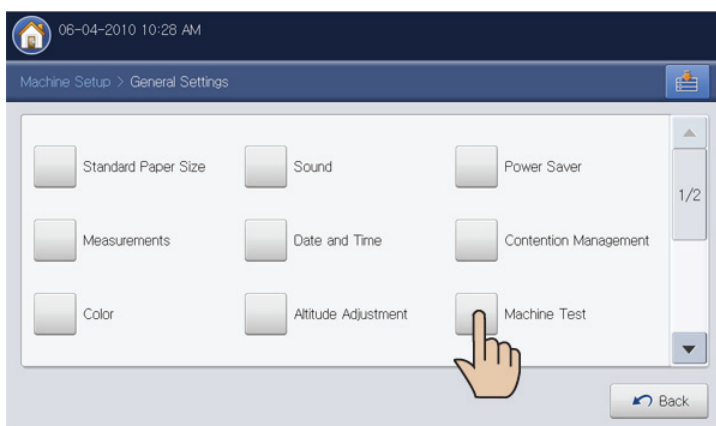


- If you have installed the dual cassette feeder, select **Tray 3** and **Tray 4** for print adjustment.
- If you have installed the high capacity feeder, select **Tray 3** for print adjustment.

1. Press **Machine Setup** from the display screen.

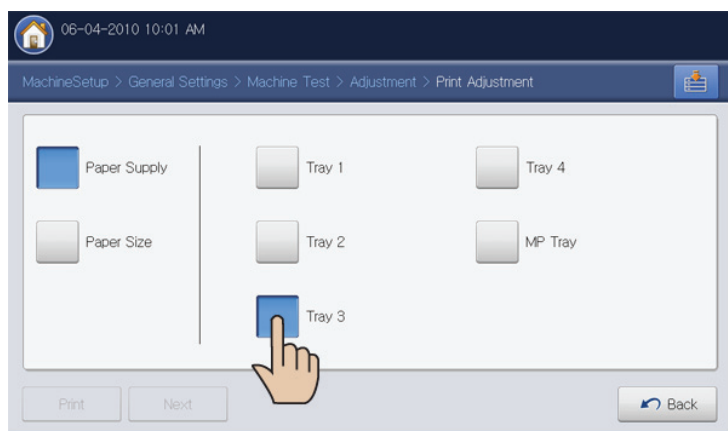


2. Press **Machine Setup > General Settings > Machine Test**.

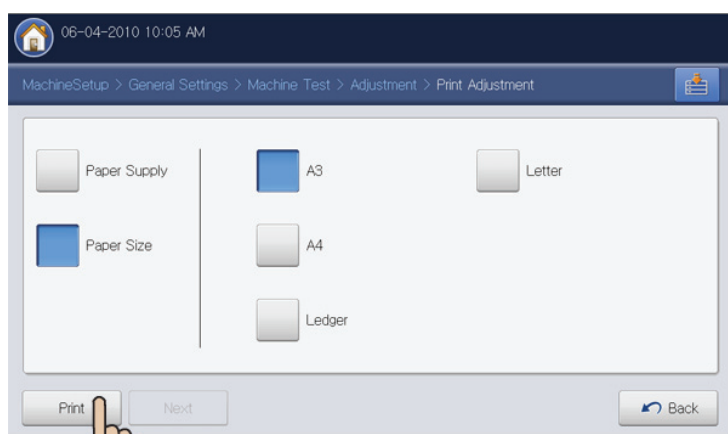


3. Press **ID's** input area. The pop-up keyboard appears.
Enter the name which is entered in the initial setting step 6 (See "Press the Name input area." on page37).
Then press **OK** on the pop-up keyboard.
You can also select the ID pressing **Recent users**.
 4. Press **Password's** input area. The pop-up keyboard appears.
Enter the password which is entered in the initial setting step 6 (See "Press the Name input area." on page37).
Then press **OK** on the pop-up keyboard.
 5. Press **Domain's** input area. The pop-up keyboard appears.
Press L, O, C, A, L and press **OK** on the pop-up keyboard.
You can also select the domain name by pressing **Domain List**.
-
- The domain name may differ for your machine depending on its options or models.
6. Press **OK**.

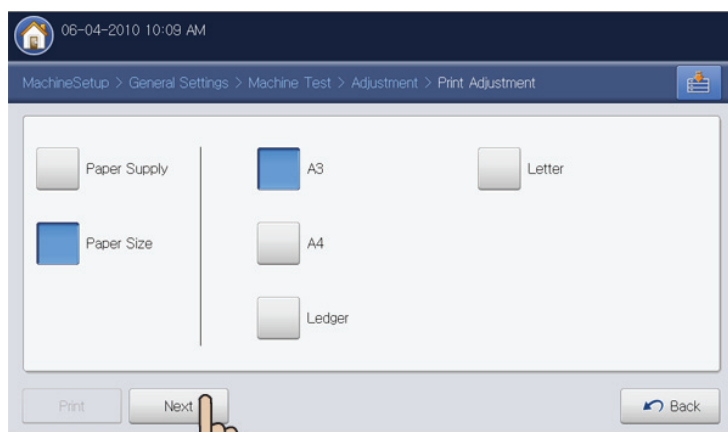
7. Press **Adjustment** > **Print Adjustment** > **Paper Supply** > **Tray**.



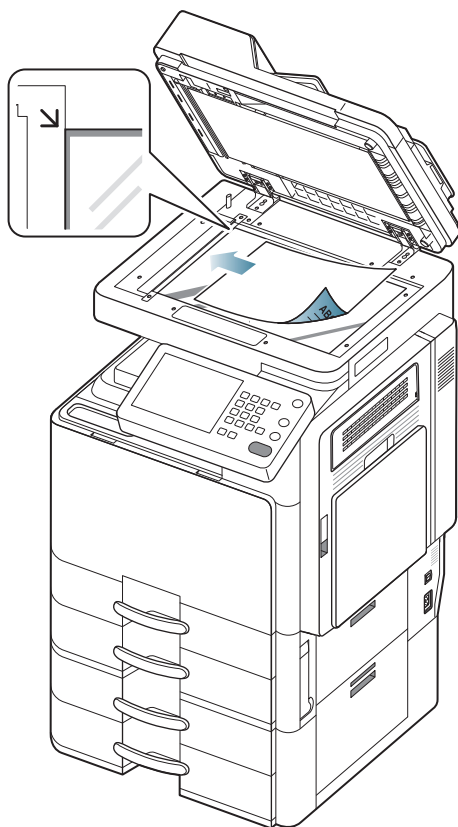
8. Press **Paper Size** > **A3** > **Print**.



9. The machine prints the print test chart. Press **Next**.



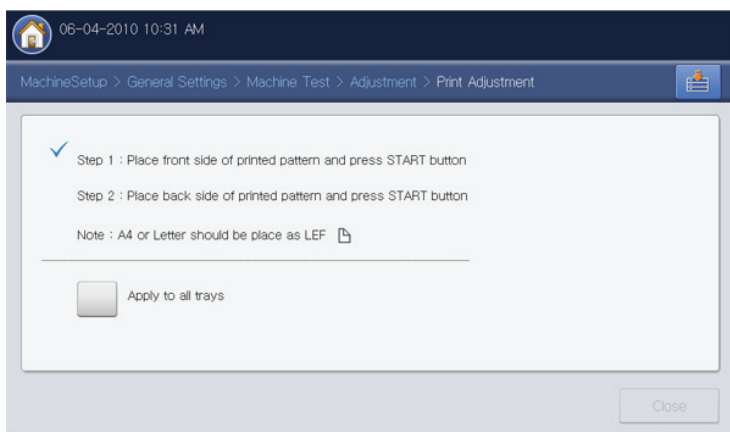
10. Place the front of the print test chart face down on the scanner glass. The print test chart has **A (Front Side)** on the front page.



11. Press **Start** from the control panel.



If you select **Apply to all trays**, the trays that are not selected also have the print adjustment results applied. We recommend performing print adjustment for each tray individually to optimize each tray's settings. Print adjustment results performed in this way will be better than using **Apply to all trays**.



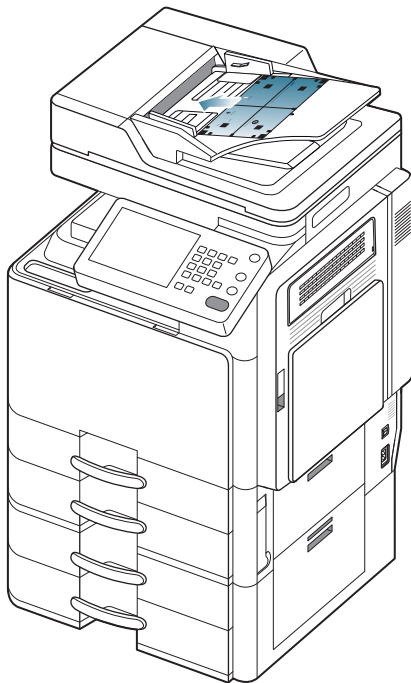
12. Follow the steps on the display screen. When print adjustment is finished, remove the print test chart on the scanner glass.

DADF skew test and adjustment

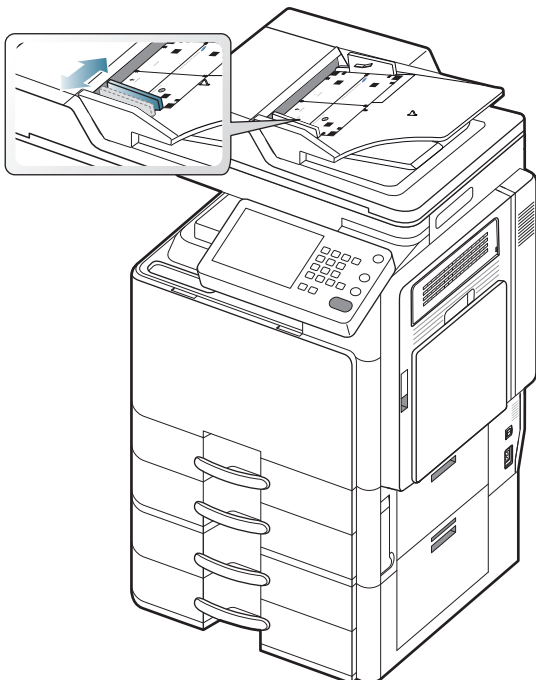
After initial setting is completed, you need to conduct the DADF skew test and adjustment using the DADF test chart which supplied with DADF.

Skew test

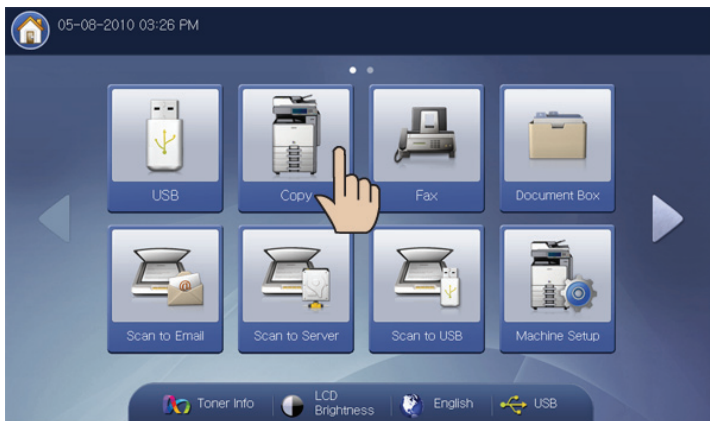
1. Load the A4 (or LTR) DADF test chart face up into the DADF.



2. Adjust the document width guides to the paper size.



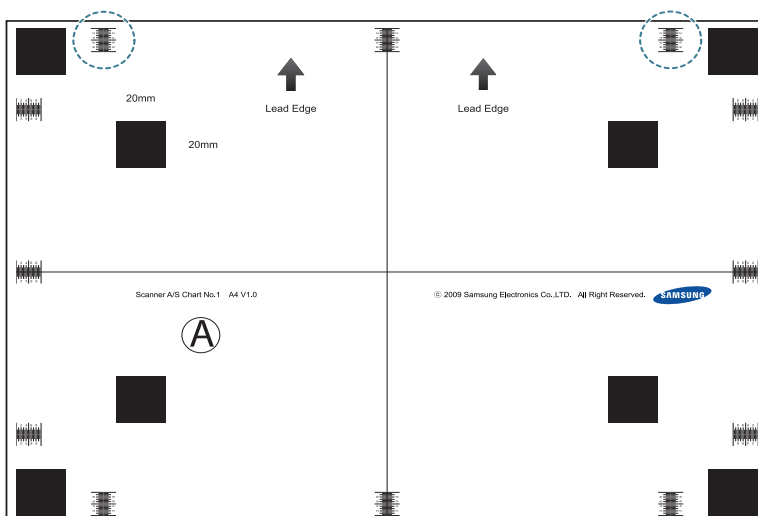
3. Press **Copy** from the display screen.



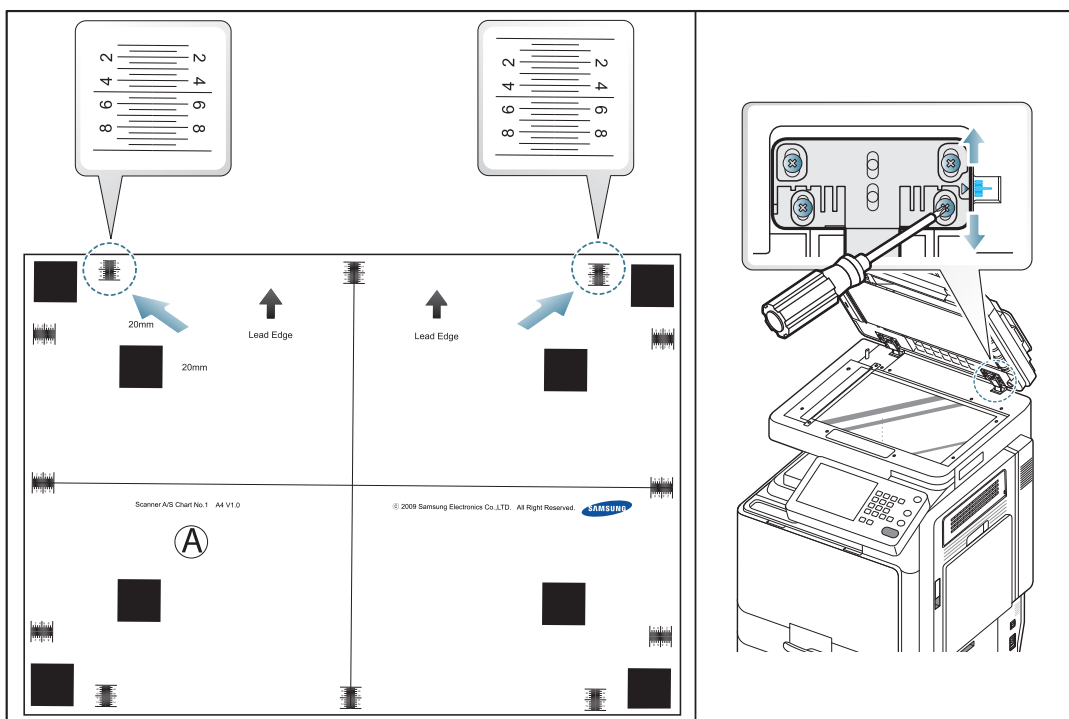
4. Press **Start** from the control panel to begin copying.



5. Compare the condition of the printout with the DADF test chart.
For example, the length of scale marks in the circles is equivalent (acceptable range by less or more than 0.5 mm), it means the DADF was installed well.

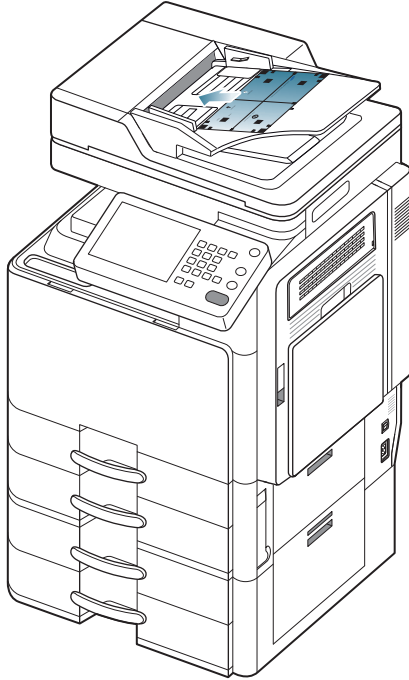


Otherwise, adjust the DADF using the screw at the backside and handle hinge as shown by the examples below.

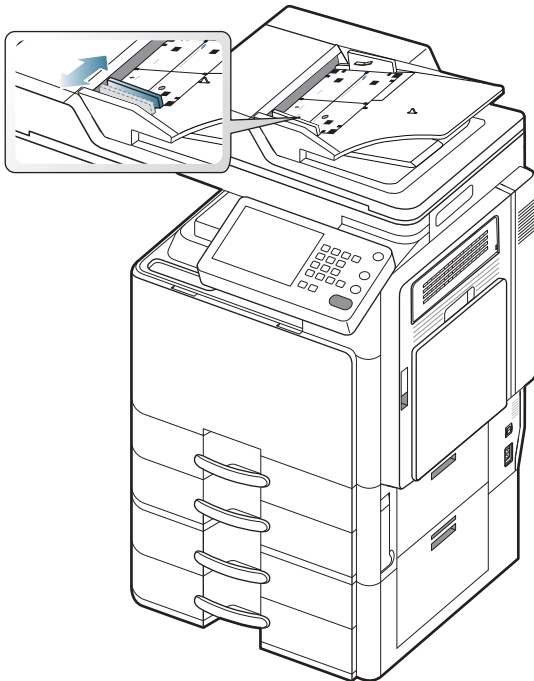


DADF adjustment

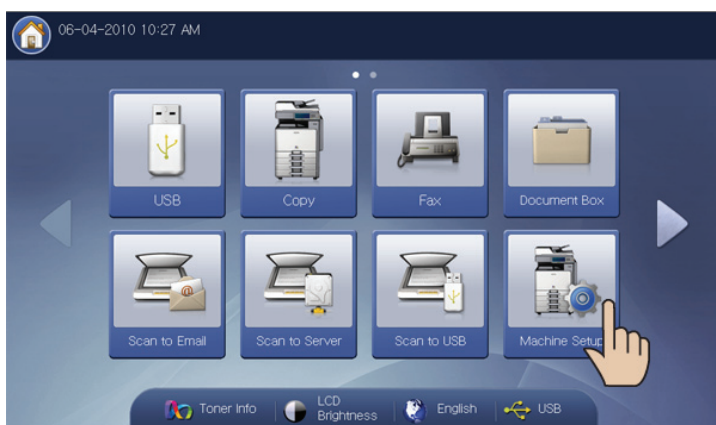
1. Load the A4 (or LTR) DADF test chart face up into the DADF.



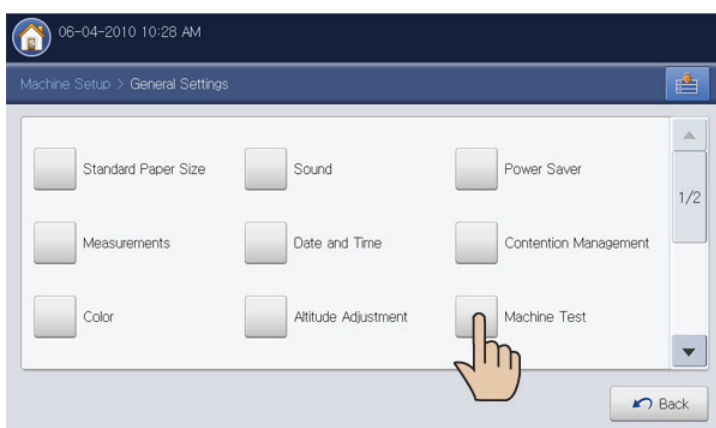
2. Adjust the document width guides to the paper size.




3. Press **Machine Setup** from the display screen.

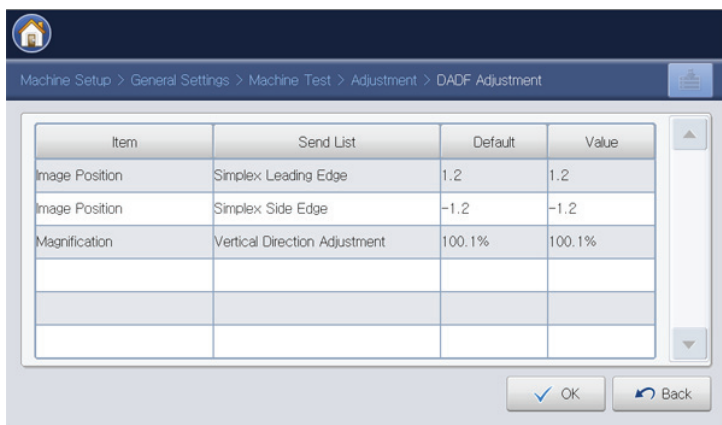


4. Press **Machine Setup > General Settings > Machine Test**.



5. Press **ID's** input area. The pop-up keyboard appears.
Enter the name which is entered in the initial setting step 6 (See "Press the Name input area." on page37).
Then press **OK** on the pop-up keyboard.
You can also select the ID pressing **Recent users**.
6. Press **Password's** input area. The pop-up keyboard appears.
Enter the password which is entered in the initial setting step 6 (See "Press the Name input area." on page37).
Then press **OK** on the pop-up keyboard.
7. Press **Domain's** input area. The pop-up keyboard appears.
Press L, O, C, A, L and press **OK** on the pop-up keyboard.
You can also select the domain name pressing **Domain List**.
 The domain name may differ for your machine depending on its options or models.
8. Press **OK**.

9. Press **Adjustment** > **DADF Adjustment** > **OK**.



Item	Send List	Default	Value
Image Position	Simplex Leading Edge	1.2	1.2
Image Position	Simplex Side Edge	-1.2	-1.2
Magnification	Vertical Direction Adjustment	100.1%	100.1%

OK Back

The machine adjusts the DADF automatically.

After the DADF skew test and adjustment, the pop-up window appears on the display screen.

Remove the the A4 (or LTR) DADF test chart from the DADF.

Installing the supplied software

This chapter gives you step-by-step instructions for installing the supplied software. For the detailed information about supplied software, refer to the User's Guide or Administrator's Guide on the User's Guide CD.

This chapter includes:

- Supplied software
- System requirements
- Installing a network connected machine's driver

Supplied software

After you have set up your machine and connected it to your computer, you must install the machine software. If you are a Windows or Macintosh OS user, install the software from the software CD and if you are a Linux OS user, download the software from the Samsung website (www.samsung.com/printer) and install.



Machine software are occasionally updated due to release of new operating system and etc. If needed, download the latest version from the Samsung website (www.samsung.com/printer).

OS	CONTENTS
Windows	<ul style="list-style-type: none">• Printer driver: Use this driver to take full advantage of your machine's features.• PostScript printer driver: Use the PostScript driver to print documents with complex fonts and graphics in the PS language.• Scanner driver: TWAIN and Windows Image Acquisition (WIA) drivers are available for scanning documents on your machine.• SetIP: Use this program to set your machine's TCP/IP addresses.• Network PC Fax: You can send a fax from your computer without going to the machine.• Samsung Easy Printer Manager: Samsung Easy Printer Manager is an application that combines Samsung machine settings into one location. Samsung Easy Printer Manager combines device settings as well as printing environments, settings/actions and launching.• Samsung Easy Document Creator: Samsung Easy Document Creator is an application to help users scan, compile, and save documents in multiple formats, including.• XPS printer driver: Use XML Paper Specification (XPS) printer driver to print documents for taking advantages in XPS print path. You can install this driver only on Windows Vista or higher. (www.samsung.com/printer)
Macintosh	<ul style="list-style-type: none">• PostScript printer driver: Use this driver to run your machine from a Macintosh computer and print documents (PostScript printer description file is included).• Scanner driver: TWAIN and ICA scanner drivers are available for scanning documents on your machine.• SetIP: Use this program to set your machine's TCP/IP addresses.• Samsung Easy Printer Manager: Samsung Easy Printer Manager is an application that combines Samsung machine settings into one location. Samsung Easy Printer Manager combines device settings as well as printing environments, settings/actions and launching.• Samsung Easy Document Creator: Samsung Easy Document Creator is an application to help users scan, compile, and save documents in multiple formats, including.• Fax Utilities: You can send a fax from your computer without going to the machine.
Linux	<ul style="list-style-type: none">• Unified Linux Driver: Use this driver to take full advantage of your machine's features.• Printer Description (PPD) file: Use this file to run your machine from a Linux computer and print documents.• SANE: Use this driver to scan documents.• SetIP: Use this program to set your machine's TCP/IP addresses.
Unix	<ul style="list-style-type: none">• Unified Unix Printer Driver: Use this driver to take full advantage of your machine's features.

System requirements

Before you begin, ensure that your system meets the following requirements:

Windows

Your machine supports the following Windows operating systems.

OPERATING SYSTEM	REQUIREMENT (RECOMMENDED)		
	CPU	RAM	FREE HDD SPACE
Windows 2000	Pentium II 400 MHz (Pentium III 933 MHz)	64 MB (128 MB)	600 MB
Windows XP	Pentium III 933 MHz (Pentium IV 1 GHz)	128 MB (256 MB)	1.5 GB
Windows Server 2003	Pentium III 933 MHz (Pentium IV 1 GHz)	128 MB (512 MB)	1.25 GB to 2 GB
Windows Server 2008	Pentium IV 1 GHz (Pentium IV 2 GHz)	512 MB (2048 MB)	10 GB
Windows Vista	Pentium IV 3 GHz	512 MB (1024 MB)	15 GB
Windows 7	Pentium IV 1 GHz 32-bit or 64-bit processor or higher	1 GB (2 GB)	16 GB
	<ul style="list-style-type: none">Support for DirectX 9 graphics with 128 MB memory (to enable the Aero theme).DVD-R/W Drive		
Windows Server 2008 R2	Pentium IV 1 GHz (x86) or 1.4 GHz (x64) processors (2GHz or faster)	512 MB (2048 MB)	10 GB



- Internet Explorer 6.0 or higher is the minimum requirement for all Windows operating systems.
- Users who have an administrator right can install the software.
- Windows Terminal Service** is compatible with this machine.

Macintosh

OPERATING SYSTEM	REQUIREMENTS (RECOMMENDED)		
	CPU	RAM	FREE HDD SPACE
Mac OS X 10.4	<ul style="list-style-type: none">Intel ProcessorsPower PC G4/ G5	<ul style="list-style-type: none">128 MB for a powerPC based Mac (512 MB)512 MB for an Intel-based Mac (1 GB)	1 GB
Mac OS X 10.5	<ul style="list-style-type: none">Intel Processors867 MHz or faster Power PC G4/ G5	512 MB (1 GB)	1 GB
Mac OS X 10.6	<ul style="list-style-type: none">Intel Processors	1 GB (2 GB)	1 GB
Mac OS X 10.7	<ul style="list-style-type: none">Intel Processors	2 GB	4 GB

Linux

ITEM	REQUIREMENTS
Operating system	RedHat Enterprise Linux WS 4, 5 ,6 (32/64bit) Fedora Core2~15 (32/64bit) SuSE Linux 9.1 (32bit) OpenSuSE 10.2, 10.3, 11.0, 11.1, 11.2, 11.3, 11.4 (32/64bit) Mandriva 2007, 2008, 2009, 2009.1, 2010 (32/64bit) Ubuntu 6.06, 6.10, 7.04, 7.10, 8.04, 8.10, 9.04, 9.10, 10.04, 10.10, 11.04 (32/64bit) SuSE Linux Enterprise Desktop 10, 11 (32/64bit) Debian 4.0, 5.0, 6.0 (32/64bit)
CPU	Pentium IV 2.4GHz (IntelCore2)
RAM	512 MB (1024 MB)
Free HDD space	1 GB (2GB)



It is necessary to claim swap partition of 300 MB or larger for working with large scanned images.

UNIX

ITEM	REQUIREMENTS
Operating system	Sun Solaris 9, 10 (x86, SPARC) IBM AIX 5.1, 5.2, 5.3, 5.4 (PowerPC) HP-UX 11.0, 11i v1, 11i v2, 11i v3 (PA-RISC, Itanium)
Free HDD space	Up to 100 MB

Installing a network connected machine's driver



If you are a Macintosh or Linux OS user, refer to the Administrator's Guide on the User's Guide CD for installing printer driver.

Windows


You can install the machine software using the typical or custom method.

The following steps below are for typical installation which is recommended for most users. All components necessary for machine operations will be installed.

1. Make sure that the machine is connected to the network or USB and powered on.



If the "**Found New Hardware Wizard**" window appears during the installation procedure, click **Cancel** to close the window.

2. Insert the software CD into your CD-ROM drive.
 - The software CD should automatically run and an installation window appear.
 - If the installation window does not appear, click **Start** and then **Run**. Type X:\Setup.exe, replacing "X" with the letter which represents your drive. Click **OK**.
 - If you use Windows Vista, click **Start > All programs > Accessories > Run**. Type X:\Setup.exe replacing "X" with the letter which represents your drive and click **OK**.
 - If the **AutoPlay** window appears in Windows Vista, click **Run Setup.exe** in **Install or run program** field, and click **Continue** in the **User Account Control** windows.
3. Select **Install now**.
 -  The **Custom Installation** allows IT administrator or system administrator to install printer driver and supplied software to multiple clients simultaneously. (See Administrator's Guide.)
4. Read **License Agreement**, and select **I accept the terms of the License Agreement**. Then, click **Next**.
5. Follow the instructions in the installation window to complete the installation process.

Contact SAMSUNG worldwide

If you have any comments or questions regarding Samsung products, contact the Samsung customer care center.

COUNTRY/REGION	CUSTOMER CARE CENTER	WEB SITE
ALBANIA	42 27 5755	www.samsung.com
ARGOLA	91-726-7864	www.samsung.com
ARGENTINE	0800-333-3733	www.samsung.com
ARMENIA	0-800-05-555	www.samsung.com
AUSTRALIA	1300 362 603	www.samsung.com
AUSTRIA	0810-SAMSUNG (7267864, € 0.07/min)	www.samsung.com
AZERBAIJAN	088-55-55-555	www.samsung.com
BAHRAIN	8000-4726	www.samsung.com/ae (English) www.samsung.com/ae_ar (Arabic)
BELARUS	810-800-500-55-500	www.samsung.com
BELGIUM	02-201-24-18	www.samsung.com/be (Dutch) www.samsung.com/be_fr (French)
BOLIVIA	800-10-7260	www.samsung.com
BOSNIA	05 133 1999	www.samsung.com
BOTSWANA	0800-726-000	www.samsung.com
BRAZIL	0800-124-421 4004-0000	www.samsung.com
BULGARIA	07001 33 11, normaltariff	www.samsung.com
CAMEROON	7095-0077	www.samsung.com
CANADA	1-800-SAMSUNG (726-7864)	www.samsung.com/ca (English) www.samsung.com/ca_fr (French)
CHILE	800-SAMSUNG (726-7864) From mobile 02-482 82 00	www.samsung.com
CHINA	400-810-5858	www.samsung.com
COLOMBIA	01-8000112112	www.samsung.com
COSTA RICA	0-800-507-7267	www.samsung.com/latin_en (English) www.samsung.com/latin (Spanish)
COTE D'L VOIRE	8000 0077	www.samsung.com
CROATIA	062 SAMSUNG (062 726 7864)	www.samsung.com
CYPRUS	8009 4000 only from landline	www.samsung.com
CZECH REPUBLIC	800-SAMSUNG (800-726786)	www.samsung.com
	Samsung Electronics Czech and Slovak, s.r.o., Oasis Florenc, Sokolovská 394/17, 180 00, Praha 8	
DENMARK	70 70 19 70	www.samsung.com
DOMINICA	1-800-751-2676	www.samsung.com/latin_en (English) www.samsung.com/latin (Spanish)

COUNTRY/REGION	CUSTOMER CARE CENTER	WEB SITE
ECUADOR	1-800-10-7267	www.samsung.com/latin_en (English) www.samsung.com/latin (Spanish)
EGYPT	0800-726786	www.samsung.com
EIRE	0818 717100	www.samsung.com
EL SALVADOR	800-6225	www.samsung.com/latin_en (English) www.samsung.com/latin (Spanish)
ESTONIA	800-7267	www.samsung.com
FINLAND	09 85635050	www.samsung.com
FRANCE	01 48 63 00 00	www.samsung.com
GERMANY	0180 5 SAMSUNG bzw. 0180 5 7267864* (*0,14 €/Min. aus dem dt. Festnetz, aus dem Mobilfunk max. 0,42 €/ Min.)	www.samsung.com
GEORGIA	8-800-555-555	www.samsung.com
GHANA	0800-10077 0302-200077	www.samsung.com
GREECE	80111-SAMSUNG (80111 7267864) only from landline (+30) 2106897691 only from mobile and land line	www.samsung.com
GUATEMALA	1-800-299-0013	www.samsung.com/latin_en (English) www.samsung.com/latin (Spanish)
HONDURAS	800-27919267	www.samsung.com/latin_en (English) www.samsung.com/latin (Spanish)
HONG KONG	(852) 3698-4698	www.samsung.com/hk (Chinese) www.samsung.com/hk_en/ (English)
HUNGARY	06-80-SAMSUNG (726-7864)	www.samsung.com
INDIA	1800 1100 11 3030 8282 1800 3000 8282 1800 266 8282	www.samsung.com
INDONESIA	0800-112-8888 021-5699-7777	www.samsung.com
IRAN	021-8255	www.samsung.com
ITALY	800-SAMSUNG (726-7864)	www.samsung.com
JAMAICA	1-800-234-7267	www.samsung.com
JAPAN	0120-327-527	www.samsung.com
JORDAN	800-22273 065777444	www.samsung.com
KAZAKHSTAN	8-10-800-500-55-500 (GSM:7799)	www.samsung.com
KENYA	0800 724 000	www.samsung.com
KOSOVO	+381 0113216899	www.samsung.com
KUWAIT	183-2255	www.samsung.com
KYRGYZSTAN	00-800-500-55-500	www.samsung.com
LATVIA	8000-7267	www.samsung.com

COUNTRY/REGION	CUSTOMER CARE CENTER	WEB SITE
LITHUANIA	8-800-77777	www.samsung.com
LUXEMBURG	261 03 710	www.samsung.com
MALAYSIA	1800-88-9999	www.samsung.com
MACEDONIA	023 207 777	www.samsung.com
MEXICO	01-800-SAMSUNG (726-7864)	www.samsung.com
MOLDOVA	0-800-614-40	www.samsung.com
MONGOLIA	+7-800-555-55-55	www.samsung.com
MONTENEGRO	020 405 888	www.samsung.com
MOROCCO	080 100 2255	www.samsung.com
NAMIBIA	8197267864	www.samsung.com
NETHERLANDS	0900-SAMSUNG (0900-7267864) (€ 0,10/min)	www.samsung.com
NEW ZEALAND	0800 SAMSUNG (0800 726 786)	www.samsung.com
NICARAGUA	00-1800-5077267	www.samsung.com/latin_en (English) www.samsung.com/latin (Spanish)
NIGERIA	0800-726-7864	www.samsung.com
NORWAY	815 56480	www.samsung.com
OMAN	800-SAMSUNG (726-7864)	www.samsung.com/ae (English) www.samsung.com/ae_ar (Arabic)
PANAMA	800-7267	www.samsung.com/latin_en (English) www.samsung.com/latin (Spanish)
PERU	0-800-777-08	www.samsung.com
PHILIPPINES	1-800-10-SAMSUNG (726-7864) for PLDT 1-800-3-SAMSUNG (726-7864) for Digitel 1-800-8-SAMSUNG (726-7864) for Globe 02-5805777	www.samsung.com
POLAND	0 801 1SAMSUNG (172-678) +48 22 607-93-33	www.samsung.com
PORTUGAL	808 20-SAMSUNG (808 20 7267)	www.samsung.com
PUERTO RICO	1-800-682-3180	www.samsung.com
RUMANIA	08010 SAMSUNG (08010 726 7864) TOLL FREE No.	www.samsung.com
RUSSIA	8-800-555-55-55	www.samsung.com
SAUDI ARABIA	9200-21230	www.samsung.com/ae (English) www.samsung.com/ae_ar (Arabic)
SENEGAL	800-00-0077	www.samsung.com
SERBIA	0700 SAMSUNG (0700 726 7864)	www.samsung.com
SINGAPORE	1800-SAMSUNG (726-7864)	www.samsung.com
SLOVAKIA	0800-SAMSUNG (0800-726-7864)	www.samsung.com
SOUTH AFRICA	0860 SAMSUNG (726-7864)	www.samsung.com
SPAIN	902-1-SAMSUNG(902 172 678)	www.samsung.com
SWEDEN	0771 726 7864 (SAMSUNG)	www.samsung.com
SWITZERLAND	0848-SAMSUNG (7267864, CHF 0.08/min)	www.samsung.com/ch (German) www.samsung.com/ch_fr (French)

COUNTRY/REGION	CUSTOMER CARE CENTER	WEB SITE
TADJIKISTAN	8-10-800-500-55-500	www.samsung.com
TAIWAN	0800-329-999 0266-026-066	www.samsung.com
TANZANIA	0685 88 99 00	www.samsung.com
THAILAND	1800-29-3232 02-689-3232	www.samsung.com
TRINIDAD & TOBAGO	1-800-SAMSUNG (726-7864)	www.samsung.com
TURKEY	444 77 11	www.samsung.com
U.A.E	800-SAMSUNG (726-7864)	www.samsung.com
UGANDA	0800-300 300	www.samsung.com
U.K	0330 SAMSUNG (726-7864)	www.samsung.com
U.S.A	1-800-SAMSUNG (726-7864)	www.samsung.com
UKRAINE	0-800-502-000	www.samsung.ua (Ukrainian) www.samsung.com/ua_ru (Russian)
UZBEKISTAN	8-10-800-500-55-500	www.samsung.com
VENEZUELA	0-800-100-5303	www.samsung.com
VIETNAM	1 800 588 889	www.samsung.com
ZAMBIA	211350370	www.samsung.com

Index

C

connect
network cable [32](#)

F

features
supplied software [51](#)

I

initial setting [35](#)

install
imaging unit [16](#), [21](#)
optional high capacity feeder
[12](#)
optional tray [12](#)
stand [12](#)
toner cartridge [14](#)

L

Linux
supplied softwares [51](#)
system requirements [52](#)

loading
paper in the standard tray [27](#)

M

machine configuration [8](#)

Macintosh
supplied softwares [51](#)
system requirements [52](#)

N

network
driver installation
Windows [53](#)

P

placing a machine [11](#)
spacing [11](#)

R

rubber packing [13](#)

S

scanner lock [13](#)
service contact numbers [54](#)

T

test
DADF skew [44](#)

turn on
machine [33](#)

U

Unix
system requirements [53](#)

W

Windows
driver installation for network
connected [53](#)
supplied software [51](#)
system requirements [52](#)

SAMSUNG



JC68-02908AV300