

# Quick Installation Guide

Samsung Color Laser Printer

CLP-41xN Series  
CLP-41xNW Series  
CLP-68xND Series  
CLP-68xDW Series

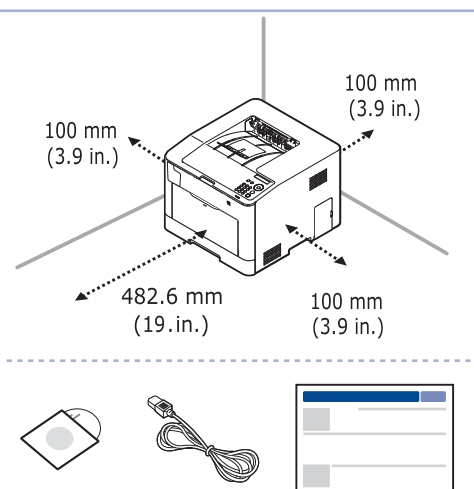
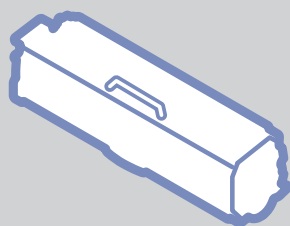


JC68-02878AV102

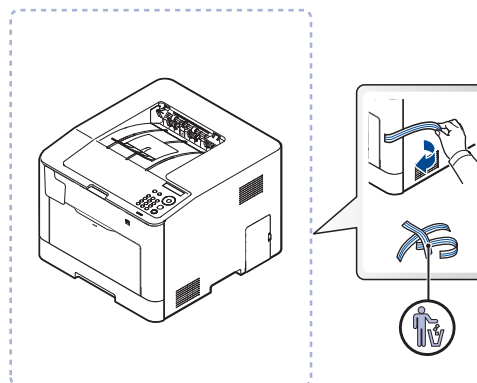
FR Guide d'installation rapide

ES Guía rápida de instalación

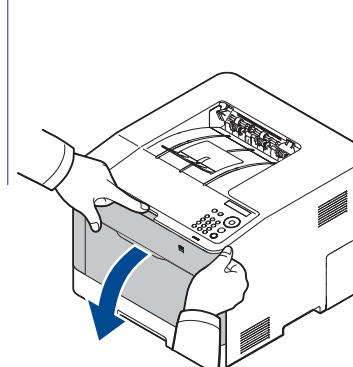
## 1 Installing the toner cartridge



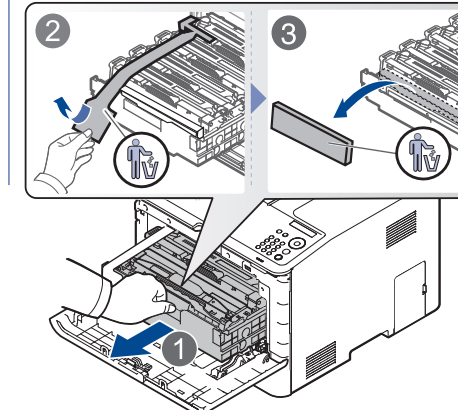
### 1 Detach / Détachez / Retirar



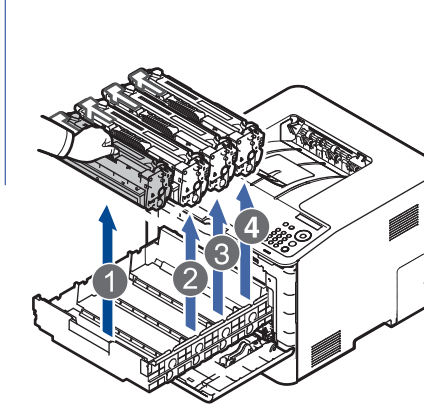
### 2 Open / Ouvrez / Abrir



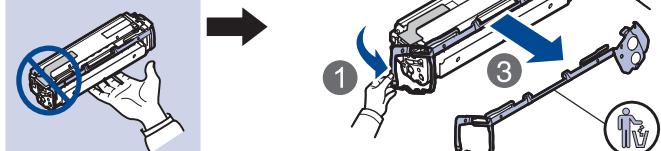
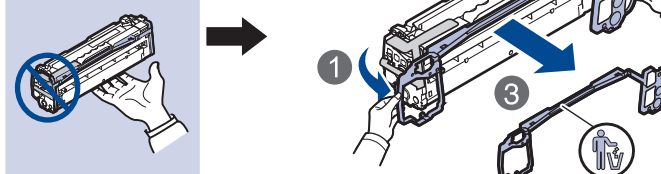
### 3 Pull / Tirez / Tirar



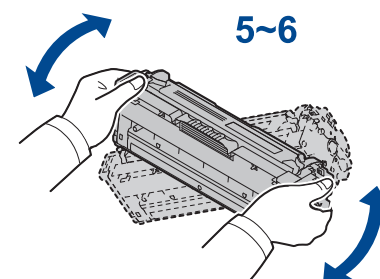
### 4 Take out / Sortez / Extraer



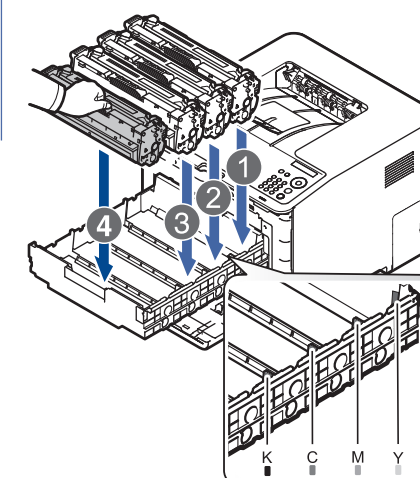
### 5 Remove / Retirez / Quitar

CLP-41xN /  
CLP-41xNW  
SeriesCLP-68xND /  
CLP-68xDW  
Series

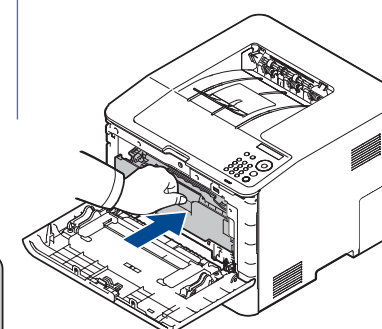
### 6 Shake / Secouez / Agitar



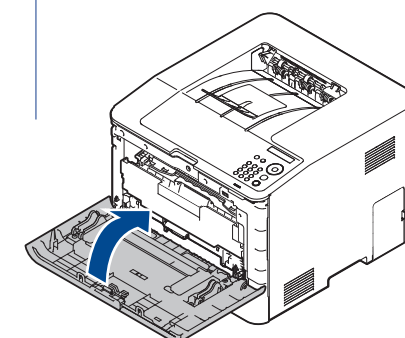
### 7 Insert / Insérez / Insertar



### 8 Push / Poussez / Empujar



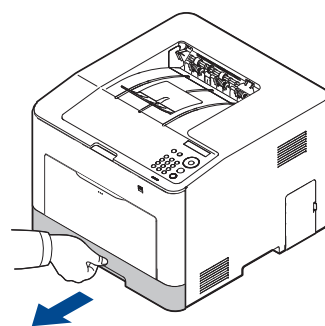
### 9 Close / Fermez / Cerrar



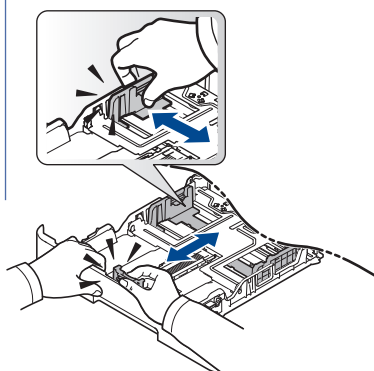
## 2 Loading Paper



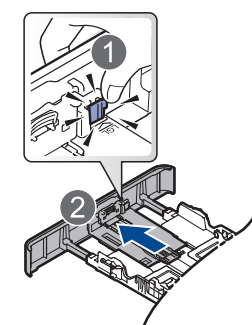
### 1 Open / Ouvrez / Abrir



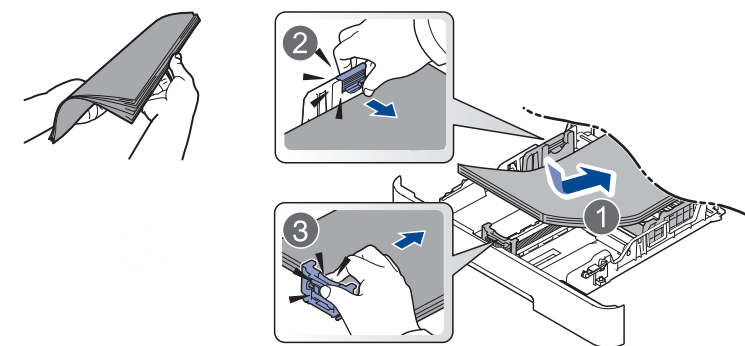
### 2 Adjust / Ajuster / Ajustar



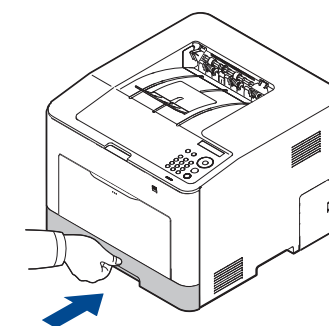
Legal (LGL)



### 3 Insert / Insérez / Insertar

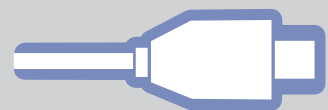


### 4 Close / Fermez / Cerrar

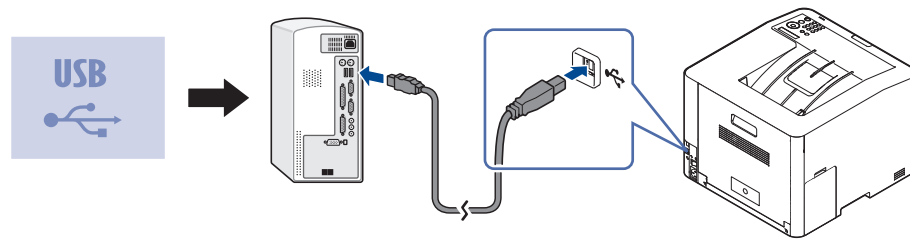


Letter Xerox Business Multipurpose 4200 or 20lb, 92 brightness  
A4 Xerox Premier or 80g/m<sup>2</sup>, 92 brightness

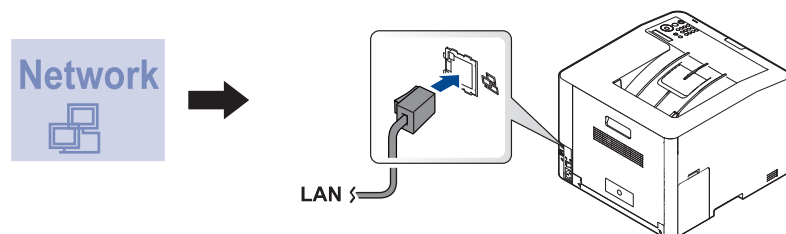
### 3 Connecting Cable



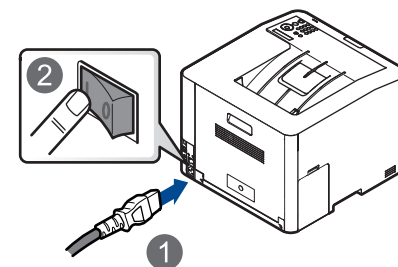
#### 1 Connect / Branchez / Conectar



OR



#### 2 Connect / Branchez / Conectar



#### 3 Cancel / Annulez / Cancelar

Microsoft®  
Windows® XP /  
Windows® Vista



Microsoft®  
Windows® 7

#### 4 Installing Software



### 4 Installing Software



Windows



a

Mac



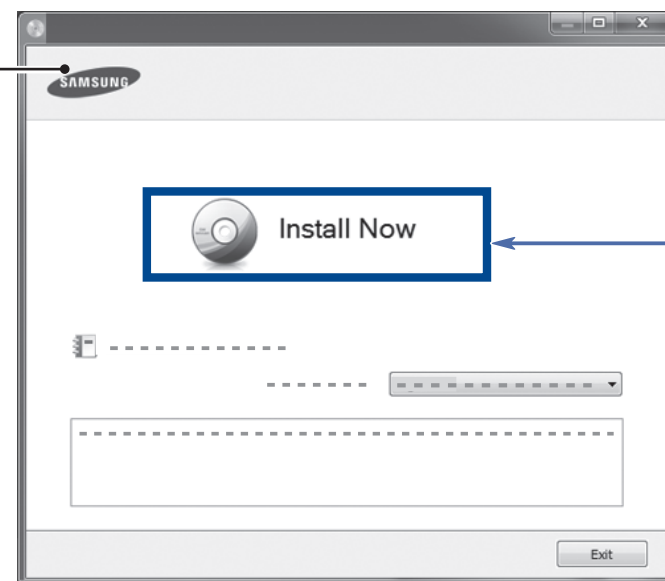
b

UNIX® / Linux

c

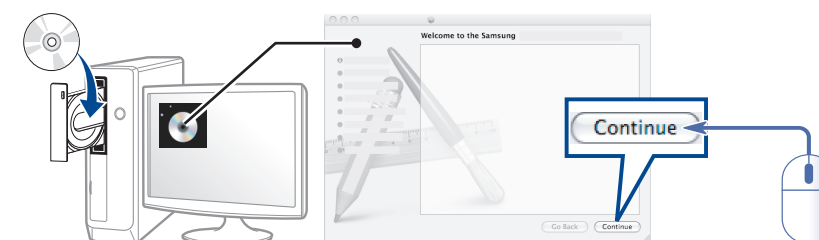
a

Windows



b

Mac



c

UNIX®  
/ Linux

Download

<http://www.samsung.com>



For details about how to install software, refer to the User's Guide.

**FR** Pour savoir comment installer le logiciel, consultez le mode d'emploi.

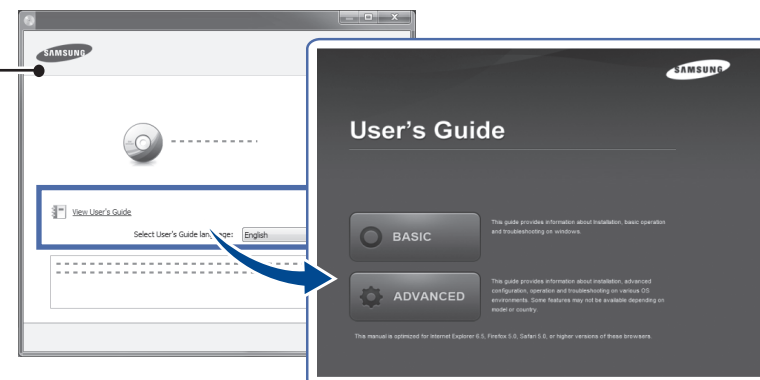
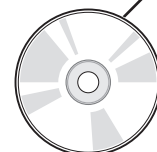
**ES** Si desea obtener más información sobre cómo instalar el software, consulte la Guía del usuario.

### 5 Viewing the User's Guide



**FR** Afficher le guide d'utilisateur

**ES** Ver el Manual de Usuario



Be sure to read the safety guidelines in the User's Guide on the supplied CD-ROM before using this product.

**FR** Avant d'utiliser ce produit, lisez attentivement les normes de sécurité indiquées dans le Guide de l'utilisateur disponible sur le CD-ROM inclus.

**ES** Antes de utilizar este producto, asegúrese de que ha leído las directrices sobre seguridad de la Guía del usuario que se encuentra en el CD-ROM suministrado.